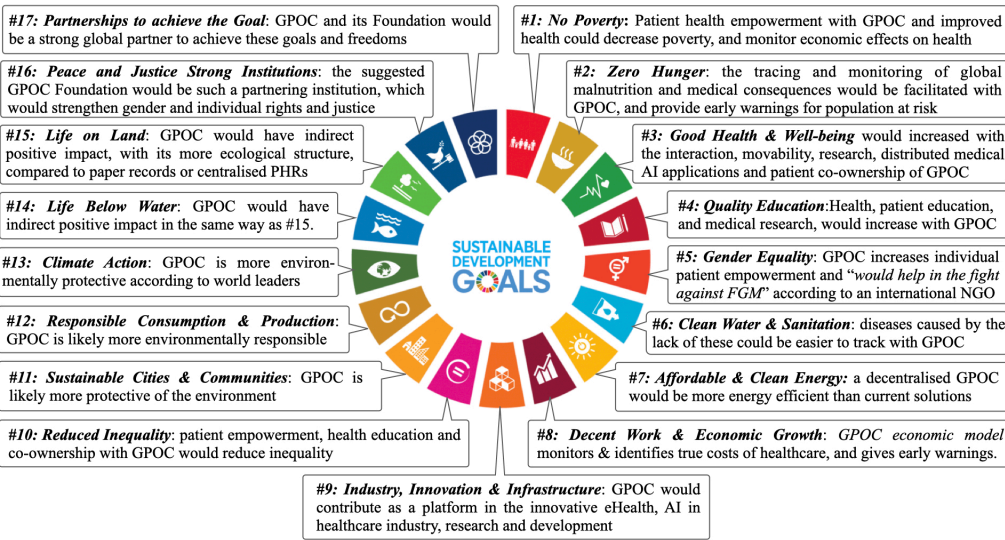




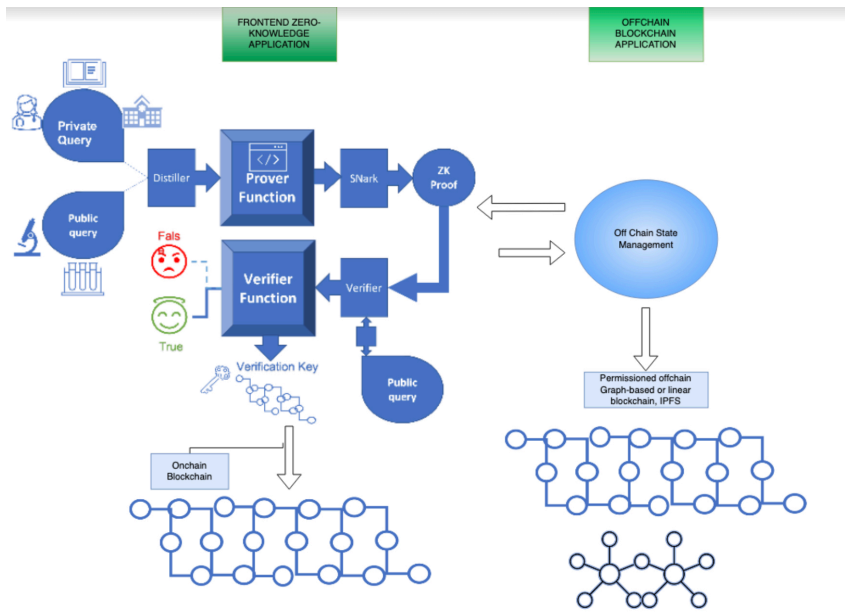
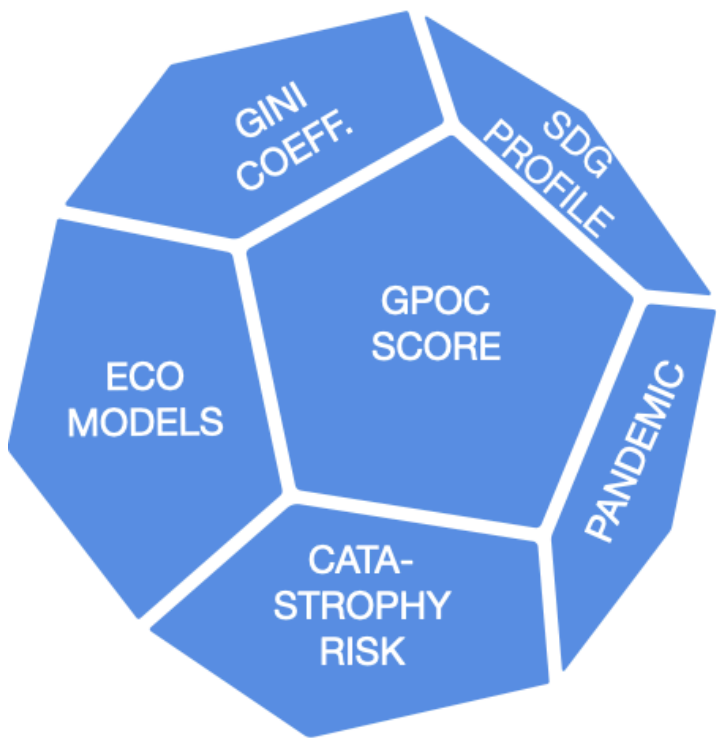
GPOC
SURVEY

GPOC
DELPHI SUMMIT



GPOC

Study	ES (95% CI)
1	3.97 (3.95, 3.98)
2	4.19 (4.17, 4.20)
3	4.41 (4.40, 4.42)
4	4.71 (4.70, 4.72)
5	4.94 (4.93, 4.94)
6	2.59 (2.57, 2.61)
7	2.81 (2.79, 2.82)
8	3.03 (3.02, 3.04)
9	3.33 (3.32, 3.34)
10	3.56 (3.55, 3.56)
11	2.08 (1.88, 2.28)
12	2.08 (1.88, 2.28)
13	2.08 (1.88, 2.28)
14	2.11 (1.92, 2.31)



The diagram illustrates a five-state process flow. At the center is a green circle labeled "Ready". Surrounding it are four other circles: a red circle labeled "Hesitant" on the left, an orange circle labeled "Weakly Approaching" at the top, a yellow circle labeled "Moderately Approaching" on the right, and a light green circle labeled "Welcoming" at the bottom. Blue arrows show a clockwise flow from Ready to Hesitant, Hesitant to Weakly Approaching, Weakly Approaching to Moderately Approaching, Moderately Approaching to Welcoming, and Welcoming back to Ready. Each circle also has a self-loop arrow.

