

# SEQC<sup>ML</sup>

Spanish Society of Laboratory Medicine



# SPANISH SOCIETY OF LABORATORY MEDICINE



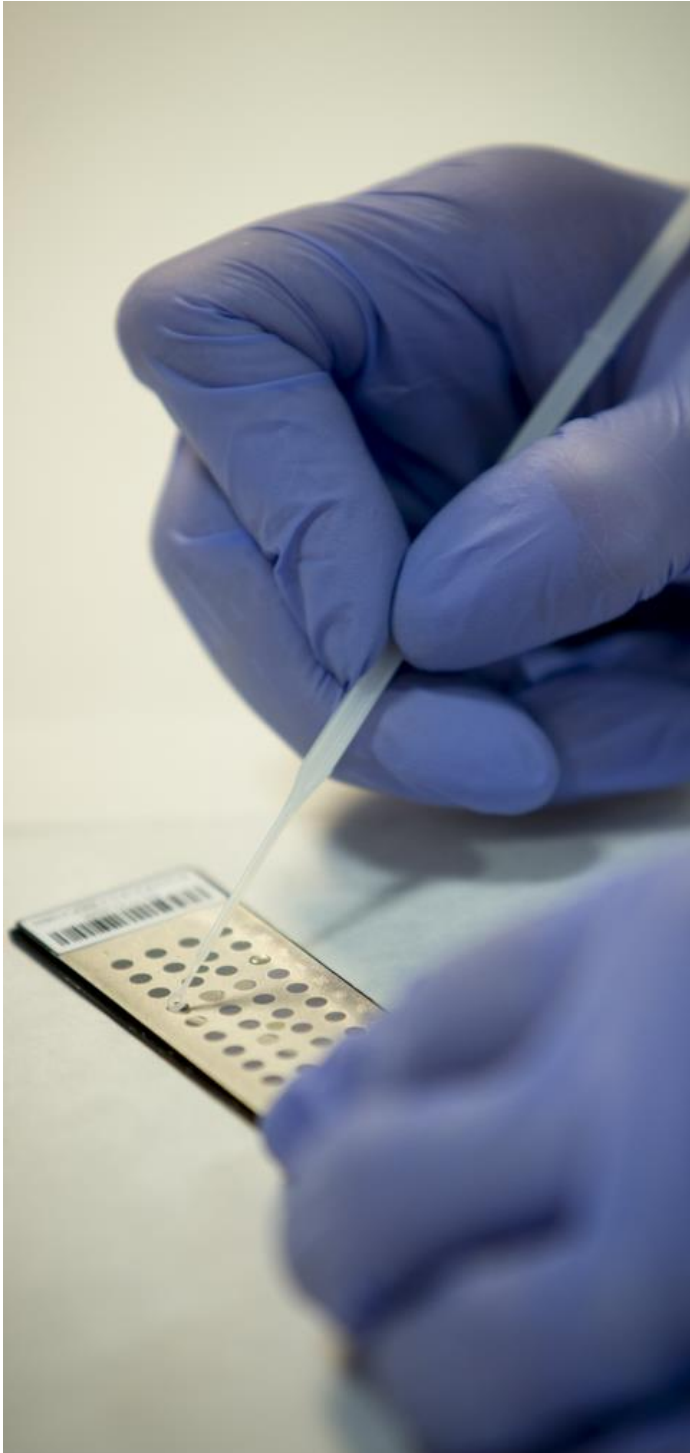


## TABLE OF CONTENTS

The value of the clinical laboratory	4
About the Spanish Society of Laboratory Medicine (SEQC <sup>ML</sup> )	5
A little bit of history	6
Mission	6
Organization	7
Advantages of being a member of the SEQC <sup>ML</sup>	8
Training activities	9
External Quality Assurance Programs	11
Communication activities	12
Scientific contents	13
Grants and Awards	13



## The value of the clinical laboratory



Laboratory Medicine is an essential part of Health Sciences and healthcare activity. Its universal character and contribution to patient care place it at the core of the healthcare system.

The information provided by the clinical laboratory influences 70% of medical decisions. Despite the relevance of laboratory data, it is estimated that laboratory analyses and *in vitro* tests account for less than 3% of the total healthcare expenditure.

Laboratory tests are requested by specialists for diagnostic, monitoring, screening, and research purposes. The information supplied by the laboratory contributes to establishing a diagnosis or treatment that will change the course of the disease, ultimately improving patient health and well-being.

In SEQC<sup>ML</sup>, we strongly believe that clinical laboratory professionals should not focus solely on the management of laboratory data, but also on the information generated and its value for the patient; all in a context where patients are increasingly involved in the healthcare process.

Healthcare systems are adopting a new approach based on personalized medicine, also commonly referred to as “5P medicine”. Thus, laboratories must assume the five fundamentals of personalized medicine: Personalized, Predictive, Preventive, Participative and Populational.



# About the Spanish Society of Laboratory Medicine (SEQC<sup>ML</sup>)

The Spanish Society of Laboratory Medicine (SEQC<sup>ML</sup>) was founded in 1976 to bring together Clinical Laboratory professionals and promote the sharing of scientific information in this area.

SEQC<sup>ML</sup> membership creates networking opportunities and helps build relationships with other clinical laboratory experts and national and international opinion leaders. SEQC<sup>ML</sup> is a meeting point that connects members and offers the opportunity to share research results.

The SEQC<sup>ML</sup> is an active member of the International Federation of Clinical Chemistry and Laboratory Medicine (IFCC) and the European Federation of Clinical Chemistry and Laboratory Medicine (EFLM). Around thirty members act as SEQC<sup>ML</sup> representatives in the two institutions, whereas other members represent us in other organizations such as the Federation of European Societies on Trace Elements and Minerals (FESTEM), the Clinical Laboratory Standards Institute (CLSI), the International Council for Standardization in Haematology (ICSH), and the European Organisation for External Quality Assurance Providers in Laboratory Medicine (EQALM).

As a Professional Society, the SEQC<sup>ML</sup> develops activities related to Quality Assurance in the clinical laboratory. To that end, a team of professionals and specialists put their more than 40-year experience at the service of SEQC<sup>ML</sup> members.

As a Scientific Society, the SEQC<sup>ML</sup> holds Courses, Conferences, Symposia, Web seminars, Lifelong Education Programs, Congresses, etc.

In our pursue to provide the best service to our members, the SEQC<sup>ML</sup> has designed a Strategic Plan that outlines a set of primary courses of action. Our goal is to lead the field of Laboratory Medicine in our country over the medium- and long-term.



**Dr. Antonio Buño Soto**  
Chair of the SEQC<sup>ML</sup>



## A little bit of history

The Spanish Society of Laboratory Medicine (SEQC<sup>ML</sup>) was founded in 1976 by Dr. Enric Concustell Bas, Director of the Clinical Biochemistry Service of Hospital de la Santa Creu i Sant Pau, under the name of Spanish Society of Clinical Chemistry. In 1994, our Society changed its name to Spanish Society of Clinical Biochemistry and Molecular Pathology.

Its current name dates from October 2016, even though its Articles of Association were last updated in November 2017.

SEQC<sup>ML</sup> headquarters were originally located at Calle Llansà in Barcelona. In 1997, it moved to Calle Padilla 323, office 68 in the same city. In 2017, an office was opened in Madrid at Calle Castelló 128, 7<sup>th</sup> floor.

The SEQC<sup>ML</sup> has always accepted clinical laboratory professionals from all qualification levels. Currently, with more than 2,800 members, it is the largest Society of Laboratory Medicine in Spain.

---

46 years of history

More than 2,800 members

In 2016, it adopted the name SEQC<sup>ML</sup>

---



## MISSION

SEQC<sup>ML</sup> mission is to bring together all professionals in the field of Laboratory Medicine, promote the dissemination of scientific and technical publications, organize events, courses, and conferences, and collaborate with other Scientific Societies.

This mission is structured with the following objectives in mind:

- Bring together all professionals interested in Laboratory Medicine in Spain, without any excluding criteria.
  - Facilitate the sharing of scientific knowledge.
  - Study and recommend standardized methods in the field of Laboratory Medicine.
- Establish education & training guidelines and recommendations.
- Regularly hold scientific sessions, courses, meetings, congresses, and other events aimed at meeting the objectives described.
- Defend and promote Laboratory Medicine specialties and the general interests of SEQC<sup>ML</sup> members

## VISION

Our vision is that SEQC<sup>ML</sup> becomes the scientific society of reference for clinical laboratory professionals and other public and private stakeholders contributing to the generation and dissemination of knowledge at national and international level.

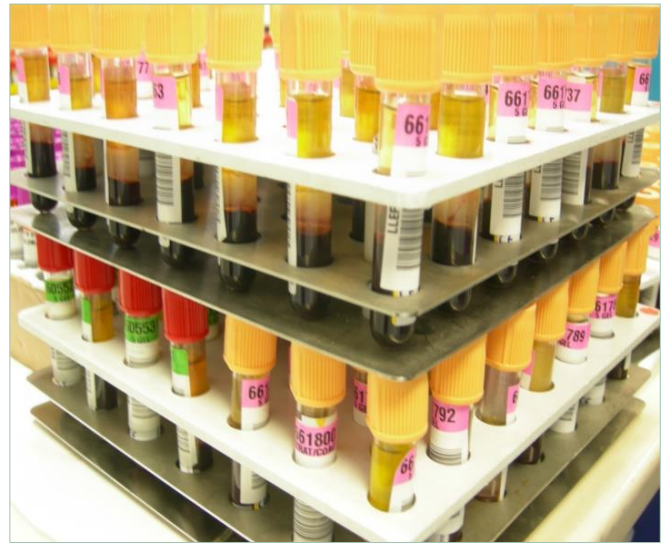
[Ethical framework of the SEQC<sup>ML</sup>](#)

# Organization

The SEQC<sup>ML</sup> is led by a Board of Directors supported by a Managing Board (with a structure similar to that of IFCC). The Managing Board is composed of the Chairs of five Committees, representatives of other areas of activity, and two board managers.

In addition to the members of the Board of Directors, the Managing Board, and the five Committees, more than 300 SEQC<sup>ML</sup> members are actively engaged in 27 groups (Commissions and Working Groups), and around 30 members act as SEQC<sup>ML</sup> representatives in various international organizations: the IFCC, the EFLM, the FESTEM, the CLSI, the ICSH and the EQALM. The Scientific Committee coordinates most of SEQC<sup>ML</sup> activity.

The SEQC<sup>ML</sup> has an updated website ([www.seqc.es](http://www.seqc.es)), where detailed information is available on the large number of activities that it organizes (Scientific Committee seminars, international symposia, the Continuing Education Program, online courses, web-based conferences and symposia, courses, etc.). The SEQC<sup>ML</sup> website provides access to research studies related to the field of laboratory medicine.



The website is also available in English ([www.seqcinternational.com](http://www.seqcinternational.com)).

The SEQC<sup>ML</sup> has a Foundation known as the **JOSE LUIS CASTAÑO - SEQC Foundation for the Development of Laboratory Medicine** ([www.fundacionjlc.es](http://www.fundacionjlc.es)), which founding mission is to develop, promote, sponsor, and disseminate activities related to professional education & training, research, and technological development in Laboratory Medicine.

To achieve its ambitious goals, the SEQC<sup>ML</sup> offers a variety of awards, grants, and funds to its members to support continuing education; cooperation with Universities and hospitals through joint projects; the organization of and participation in seminars, conferences, congresses, and exhibitions. SEQC<sup>ML</sup> also sponsors scientific projects.



# Advantages of being a SEQC<sup>ML</sup> member

SEQC<sup>ML</sup> membership helps laboratory professionals keep up to date with scientific knowledge and relevant regulations and standards, and build relationships with other professionals to share information in a more informal context.

## WEBSITE

The SEQC<sup>ML</sup> website, <http://www.seqc.es/> provides free access, although some contents are only available for members, including:

- Documents and scientific recommendations published by the SEQC<sup>ML</sup>.
- *The Clinical Laboratory journal* (Elsevier Publishing House)  
<https://www.elsevier.es/es-revista-laboratorio-clinico-282>
- **Monographs with discounts for members.** Members can acquire monographs published by the SEQC<sup>ML</sup> at a reduced price of €6.
- **Free monographs.** Free access is granted to monographs published more than one year ago.





# Training activities

The SEQC<sup>ML</sup> offers a variety of training activities, including the online Continuing Education Program, courses, seminars, etc.

## THE ONLINE CONTINUING EDUCATION PROGRAM

Since 1988, the SEQC<sup>ML</sup> has offered a Continuing Education course on various topics of the field of clinical laboratory. In 2005, the course was converted to an online course.

It is performed on the *Moodle* platform, which allows participants to share information on a topic, access the discussion forum, complete the self-evaluation test, and fill in a satisfaction questionnaire.

An average of 700 members enroll on the online Continuing Education course every year.

**ONLINE COURSES ARE AVAILABLE FOR REGISTERED PARTICIPANTS VIA THIS LINK:**

[seqc40.espintime.com/moodle](http://seqc40.espintime.com/moodle)

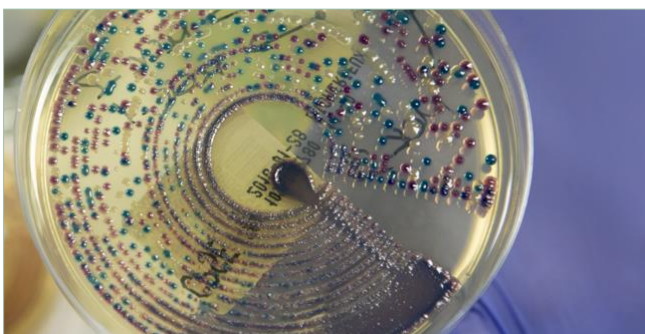


## WEB-BASED SEMINARS

A webinar is similar to a face-to-face meeting, as it enables interaction between participants. It is a way of sharing information (documents and applications), deliver a lecture, or present a course in real time with the same quality as in-person courses in a classroom.

The SEQC<sup>ML</sup> uses special Webinar software. The application makes it possible for participants to interact with the lecturer through a chat available on the conference site.

Participants only need a computer with a stable, high-speed internet connection.



## ONLINE COURSES

Along with the Continuing Education in Clinical Laboratory Program, the SEQC<sup>ML</sup> offers other online training courses.

As in the Continuing Education Program, courses are available on the **Moodle** platform, and an accreditation certificate is granted upon completion.

Participation is very high; around 1,000 members register annually in our different online courses.

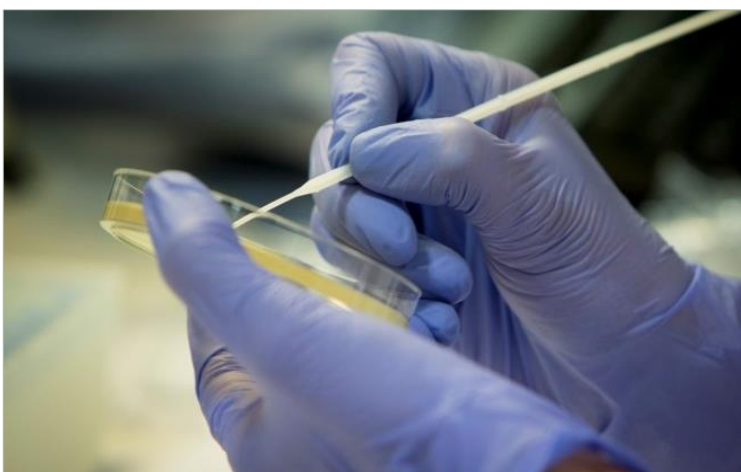
Registration in online courses is available via the link:

[seqc.es/es/cursos](http://seqc.es/es/cursos)

---

SEQC<sup>ML</sup> training activities include:

- Continuing Education Program
  - *Online* courses
  - Seminars
- 



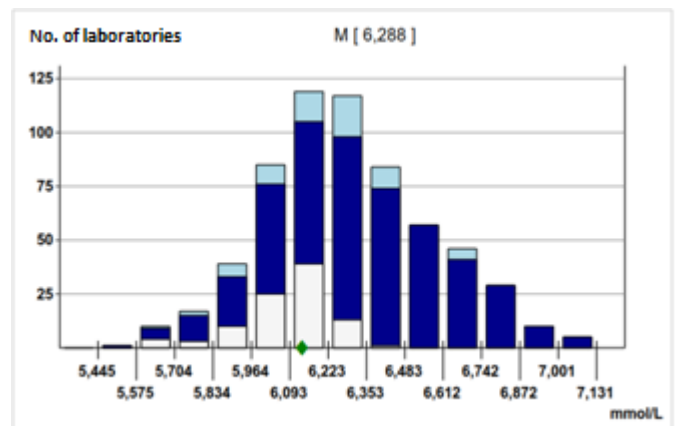
# External quality assurance programs

The SEQC<sup>ML</sup> offers an extensive portfolio of External Quality Assurance Programs for clinical laboratories, which are an essential tool for evaluating and improving the reliability of laboratory data.

## OBJECTIVES

Inter-laboratory comparison is performed to accomplish the following goals:

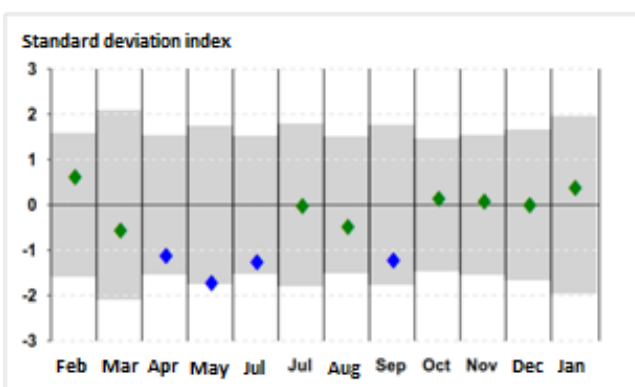
- Evaluate laboratory performance specifications of the laboratory to gather objective evidence on the reliability of laboratory results.
- Facilitate the comparability of the analytical, extra-analytical and quality management data of each laboratory, with the rest of the participating laboratories.
- Comply with international inter-laboratory comparison standards for laboratories planning to implement a quality management system to obtain an accreditation or certification.
- In short, to help clinical laboratories improve their performance and efficacy and support the implementation of quality and continuous improvement models.



## PORTFOLIO OF PROGRAMS

The SEQC<sup>ML</sup> launched its first program more than 40 years ago, and currently offers an extensive portfolio of 60 programs in the field of **biochemistry**, **extra-analytics**, **microbiology**, **serology**, **trace elements (OELM)**, and **immunology**, **immunochemistry**, and **allergy (UK NEQAS)**, which aggregately cover more than 350 analytes.

[contcal.org](http://contcal.org)



## CHARACTERISTICS

- The SEQC<sup>ML</sup> offers inter-laboratory comparison programs accredited by ENAC in accordance with the UNE-EN ISO/IEC 17043 standard for serum, proteins, hemoglobin A1c, blood gas - POCT, urine sediment, hormones I, drugs, and tumor markers
- Programs certified in accordance with ISO 9001 standard
- Monthly, quarterly, or annual periods
- Personalized consultations
- Clear and easily interpreted reports



# Communication Activities

One of the goals of the SEQC<sup>ML</sup> is to raise awareness on the role of the clinical laboratory among healthcare professionals and the general public. To this end, a Communication Committee manages the messages issued by the Society and acts as a liaison with the media.

## SOCIAL NETWORKS

The Society has profiles on [Twitter](#), [Facebook](#), [LinkedIn](#) and [Instagram](#), regularly providing updates and information to its members and the general public, in relation to the field of Laboratory Medicine.

## WEBSITES

The [website of the Society](#) offers services for members and information for the public. The website has a news section and provides information about all activities carried out by the SEQC<sup>ML</sup>. Of note, SEQC<sup>ML</sup> website is the first database of POCT tests (Point of Care Testing) and Biological Variation database.

[seqc.es/es/poctionline/](http://seqc.es/es/poctionline/)

[seqc.es/es/comisiones/comision-de-calidad-analitica/](http://seqc.es/es/comisiones/comision-de-calidad-analitica/)



## COMMUNICATION WITH THE MEDIA

The SEQC<sup>ML</sup> regularly sends press releases and notes to publicize its activities and raise awareness on essential aspects of Laboratory Medicine and its role in public health. These contents, which are received with great interest by the media, are written and disseminated by a team of spokespersons, who communicate with the media in relation to specific aspects of their area of specialization.



## Scientific contents

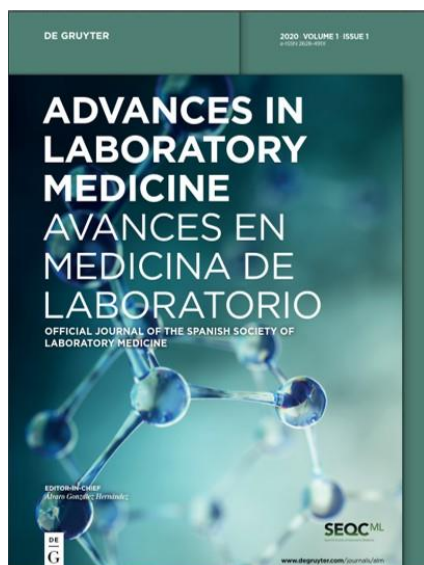
The SEQC<sup>ML</sup> publishes [monographs](#), [Society documents](#), and [consensus documents](#) with other scientific societies, in paper and digital format.

The scientific journal [Advances in Laboratory Medicine](#) is also edited by the SEQC-ML. This quarterly journal is available in electronic format and operates under open access model. All manuscripts are published in English and Spanish. This publication is available on the SEQC<sup>ML</sup> website, along with the journal *Revista del Laboratorio Clínico [Clinical Laboratory Journal]* (only available for members), which was published until 2019, and the journal *Química Clínica [Clinical Chemistry]*, which was published until 2008. Other publications include clinical practice guidelines of interest. The SEQC<sup>ML</sup> also participates actively in initiatives such as the podcast of [Radio El Microscopio](#).

---

### Scientific contents

- Monographs
  - Clinical practice guidelines
  - *Advances in Laboratory Medicine*
- 



## LAB TESTS ONLINE

**Un rincón de confianza**

Prioriza tu salud - interpreta tus análisis

[labtestsonline.es](http://labtestsonline.es)

The website [www.labtestsonline.es](http://www.labtestsonline.es), created by the SEQC<sup>ML</sup> and the AACC, in collaboration with FENIN, offers information about laboratory tests, physiological status tests, and diseases.

This website is intended to help patients and healthcare professionals to better understand the laboratory tests performed in routine practice. Information about the diagnosis and treatment of a wide range of health problems and diseases is also provided.

## Grants and awards

Every year, the SEQC<sup>ML</sup> awards post-residency grants. In addition, via the José Luis Castaño - SEQC Foundation, it awards another series of continuing education grants for clinical laboratory specialists. Finally, the Scientific Society also gives the Annual Scientific Committee award, which recognizes the scientific activity of one of its members.

[seqc.es/es/seqc/](http://seqc.es/es/seqc/)

[fundacionjlc.es/es/becas\\_convocadas](http://fundacionjlc.es/es/becas_convocadas)



# SEQC<sup>ML</sup>

Spanish Society of Laboratory Medicine

