

LAND SUITABILITY MAP

ARABICA COFFEE

**LAND RESOURCES EVALUATION AND SUITABILITY
ASSESSMENT OF STRATEGIC PRODUCTION AREAS**

PROVINCE OF QUIRINO



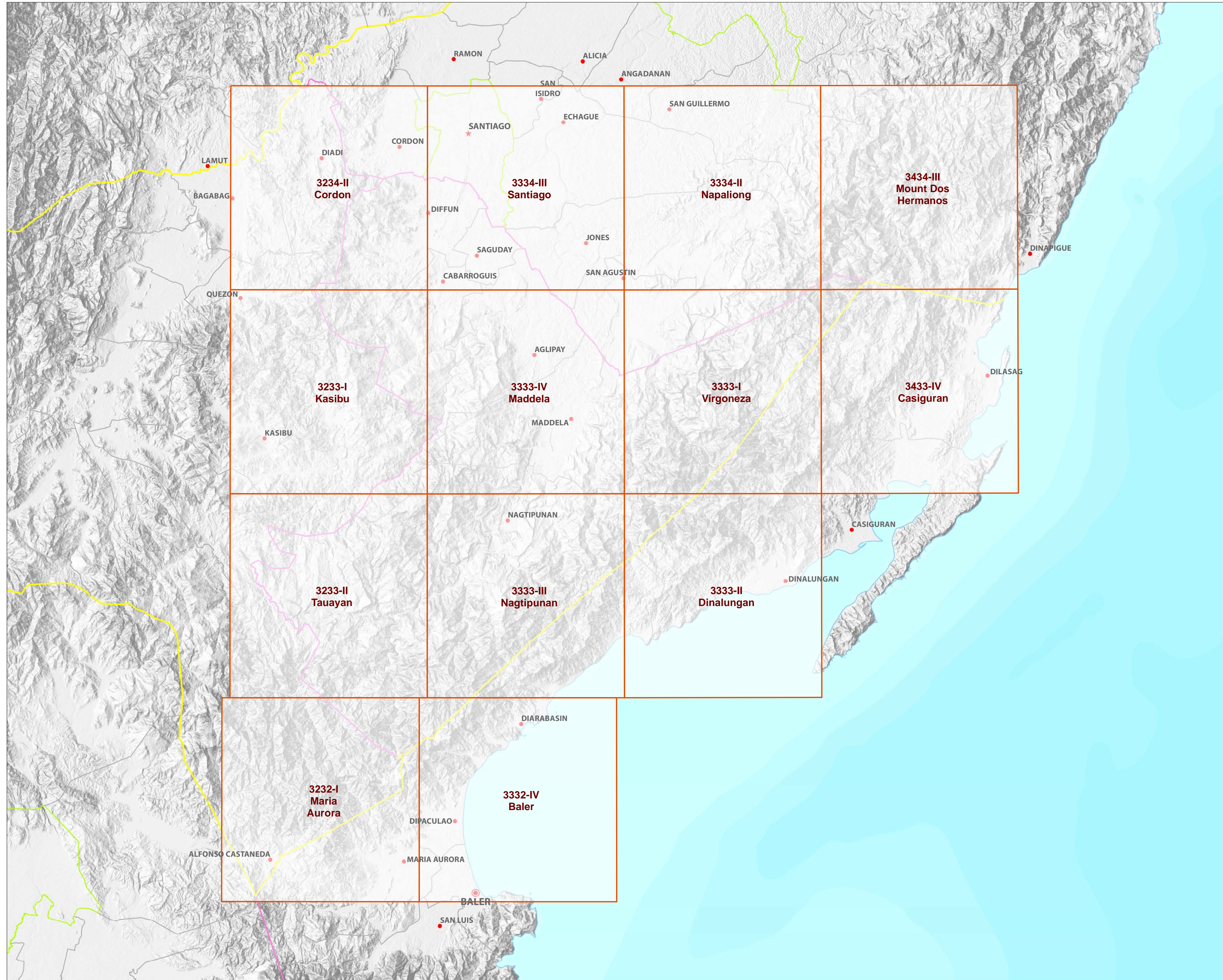
REPUBLIC OF THE PHILIPPINES
DEPARTMENT OF AGRICULTURE
BUREAU OF SOILS AND WATER MANAGEMENT

SRDC Bldg., Elliptical Road Cor. Visayas Avenue, Diliman, Quezon City 1101
Tel/Fax No.: (+632) 332-9534 E-mail: bswmclientcenter@yahoo.com

MAP INDEX

LAND RESOURCES EVALUATION AND SUITABILITY ASSESSMENT OF STRATEGIC PRODUCTION AREAS

PROVINCE OF QUIRINO



LEGEND

Places

- ★ Capital City
- ★ City
- Capital Town
- Town

Administrative Boundary

- Regional
- Provincial
- City
- Municipal

Map Index

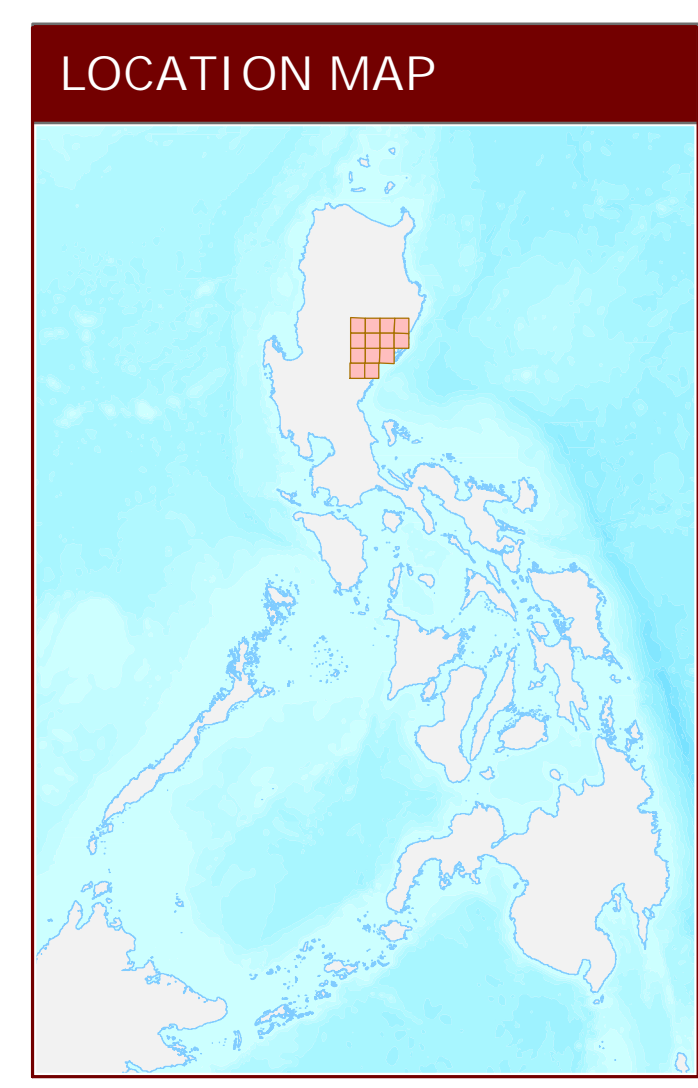
- Index grid

Topographic Relief

-

Bathymetry

-



LAND SUITABILITY MAP FOR ARABICA COFFEE

LAND RESOURCES EVALUATION AND SUITABILITY ASSESSMENT OF STRATEGIC PRODUCTION AREAS QUIRINO, REGION II

EXTENT OF SUITABILITY FOR ARABICA COFFEE PRODUCTION BY MUNICIPALITY

MUNICIPALITY	EXISTING COFFEE (Ha)			TOTAL EXISTING AREA (Ha)	EXPANSION AREA (Ha)						CONFLICT RESOLUTION (Ha)						TOTAL POTENTIAL EXPANSION AREA (Ha)	
	S1	S2	S3		Coconut		Shrubland, unmanaged*		Grassland, unmanaged*		Corn		Rice paddy, non-irrigated		Other crops			
					S1	S2	S1	S2	S1	S2	S1	S2	S1	S2	S1	S2		
AGLIPAY	-	3	-	3	-	869	-	3	-	59	-	48	-	-	-	-	-	979
CABARROGUIS	-	21	65	86	-	1,086	-	-	-	7	-	14	-	-	-	-	-	1,107
DIFFUN	-	22	75	97	-	782	-	-	-	4	-	31	-	3	-	-	-	819
MADDELA	-	10	117	127	72	5,612	-	8	-	24	-	22	-	-	-	-	-	5,738
NACTIPUNAN	-	-	1	1	6	860	-	73	-	545	-	106	-	-	-	-	-	1,590
SAGUDAY	-	-	-	-	-	12	-	-	-	-	-	-	-	-	-	-	-	12
TOTAL	-	56	258	314	-	9,221	-	84	-	638	-	222	-	3	-	-	-	10,167

*establishment of shade trees prior to planting of coffee.

SUITABILITY CLASSES:

Highly Suitable (S1)
Land having no significant limitation to sustained application of a given use, or only minor limitations that will not significantly reduce productivity or benefits and will not raise inputs above an acceptable level.

Moderately Suitable (S2)
Land having limitation which in aggregate are moderately severe for sustained application of a given use; the limitation will reduce productivity or benefits and increase required inputs to the extent that the overall advantage to be gained from the use, although still attractive, will be appreciably inferior to that expected on class S1 land.

Marginally Suitable (S3)
Land having limitations which in aggregate are severe for sustained application of a given use and will so reduce productivity or benefits, or increase required inputs, that this expenditure will be only marginally justified.

Not Suitable / Not Relevant
Land having limitations which may be surmountable in time but which cannot be corrected with existing knowledge at currently acceptable cost; the limitations are so severe as to preclude successful sustained use of the land in the given manner. Existing forest, shrubland greater than 18% slope, irrigated paddy rice and miscellaneous land types such as built up areas, roads, etc are considered as not relevant.

AGRONOMIC REQUIREMENT OF ARABICA COFFEE PRODUCTION

LAND UTILIZATION TYPE	SUITABILITY RATING	SLOPE (%)	SOIL DEPTH (cm)	SOIL TEXTURE	SOIL DRAINAGE	SOIL REACTION (pH)	INHERENT FERTILITY	FLOODING CLASS	EROSION CLASS	ROCK OUTCROPS	ELEVATION (masl)	ANNUAL RAINFALL (mm)	CLIMATIC TYPE
Coffee (Arabica)	S1	<8	>100	Cl, SiCl, SCL, SC, SIC, C, HC	WD,MWD	5.6 -7.2	high	none-slight	none-slight	none-few	1000-2000	2001-4500	I, III, IV
	S2	8 - 30	30 - 100	FSL, L, SIL	SPD,PD	5.1 - 5.5 7.3 - 7.8	medium	moderate	moderate	common	500-1000 2000-2500	1000-2000	I, II
	S3	>30	<30	S, LS, CSL, SL	VPD,ED	<5.0 - > 7.9	low	severe	severe	many	<500 >2500	<1000 >4500	

SLOPE (%)
0 - 3 - level to gently sloping
3 - 8 - gently sloping to undulating
8 - 18 - undulating to rolling
18 - 30 - rolling to moderately steep
30 - 50 - steep
> 50 - very steep

SOIL DRAINAGE
ED - excessively drained
WD - well drained
MWD - moderately well drained
SPD - somewhat poorly drained
PD - poorly drained
VPD - very poorly drained

SOIL REACTION (pH)
< 4.5 - extremely acid
4.5 - 5.0 - very strongly acid
5.1 - 5.5 - strongly acid
5.6 - 6.0 - medium acid
6.1 - 6.5 - slightly acid
6.6 - 7.2 - neutral
7.3 - 7.8 - mildly alkaline
7.9 - 8.4 - moderately alkaline
> 8.5 - strongly alkaline

SOIL TEXTURE
Coarse
S - sand
LS - loamy sand
CSL - coarse sandy loam
SL - sandy loam
Medium
FSL - fine sandy loam
L - loam
SIL - silt loam
CL - clay loam
SiCL - silty clay loam
SCL - sandy clay loam

Fine
SC - sandy clay
SiC - silty clay
C - clay
HC - heavy clay

SOIL DEPTH (cm)
0 - 30 - very shallow
30 - 50 - shallow
50 - 100 - moderately deep
> 100 - deep to very deep

SURFACE IMPEDIMENT
ROCK OUTCROPS
<10% - none - few
10 - 30% - common
>30% - many

LAND LIMITATIONS DESCRIPTION AND COMBINATIONS

ELEVATION
E12 - 500 - 1000m or 2000 - 2500m
E13 - < 500m or > 2500m

SOIL DRAINAGE
D2 - Somewhat poorly drained to poorly drained
D3 - Very poorly drained or excessively drained

SOIL DEPTH
Sh2 - Shallow to moderately deep (30 - 100cm)
Sh3 - Very shallow (< 30cm)

SOIL EROSION
E2 - Moderate erosion
E3 - Severe erosion

SLOPE/TOPOGRAPHY
T2 - Undulating to moderately steep
T3 - Steep to very steep

SOIL TEXTURE
Tc - Coarse texture

ROCK OUTCROPS
Rc2 - Common
Rc3 - Many

FLOODING
F2 - Moderate seasonal flooding
F3 - Severe seasonal flooding

CODE	LAND LIMITATION	CODE	LAND LIMITATION	CODE	LAND LIMITATION	CODE	LAND LIMITATION
1	E2-Sh2-Rc3	11	Rc2	21	T2-E12-E3-Rc3	31	T3-E12-E3-Rc2
2	E3-Sh2-Rc3	12	Sh2-Rc2	22	T2-E12-E3-Sh2-Rc2	32	T3-E12-E3-Rc3
3	E12	13	T2	23	T2-E12-E3-Sh2-Rc3	33	T3-E12-E3-Sh3-Rc2
4	E12-E2-Sh2-Rc2	14	T2-E3	24	T3	34	T3-E12-E3-Sh3-Rc3
5	E12-E2-Sh2-Rc3	15	T2-E3-Rc3	25	T3-E3		
6	E12-E3-Sh2-Rc3	16	T2-E3-Sh2-Rc2	26	T3-E3-Rc2		
7	E12-Rc2	17	T2-E3-Sh2-Rc3	27	T3-E3-Sh3-Rc2		
8	E12-Sh2	18	T2-E12	28	T3-E3-Sh3-Rc3		
9	E12-Sh2-Rc2	19	T2-E12-E3	29	T3-E12		
10	E12-Sh2-Rc3	20	T2-E12-E3-Rc2	30	T3-E12-E3		

CODE	LAND USE
2	Rice paddy, non-irrigated
4	Corn
81	Coffee
82	Cacao
116	Coconut
126	Grassland
134	Coconut

CLIMATE TYPE

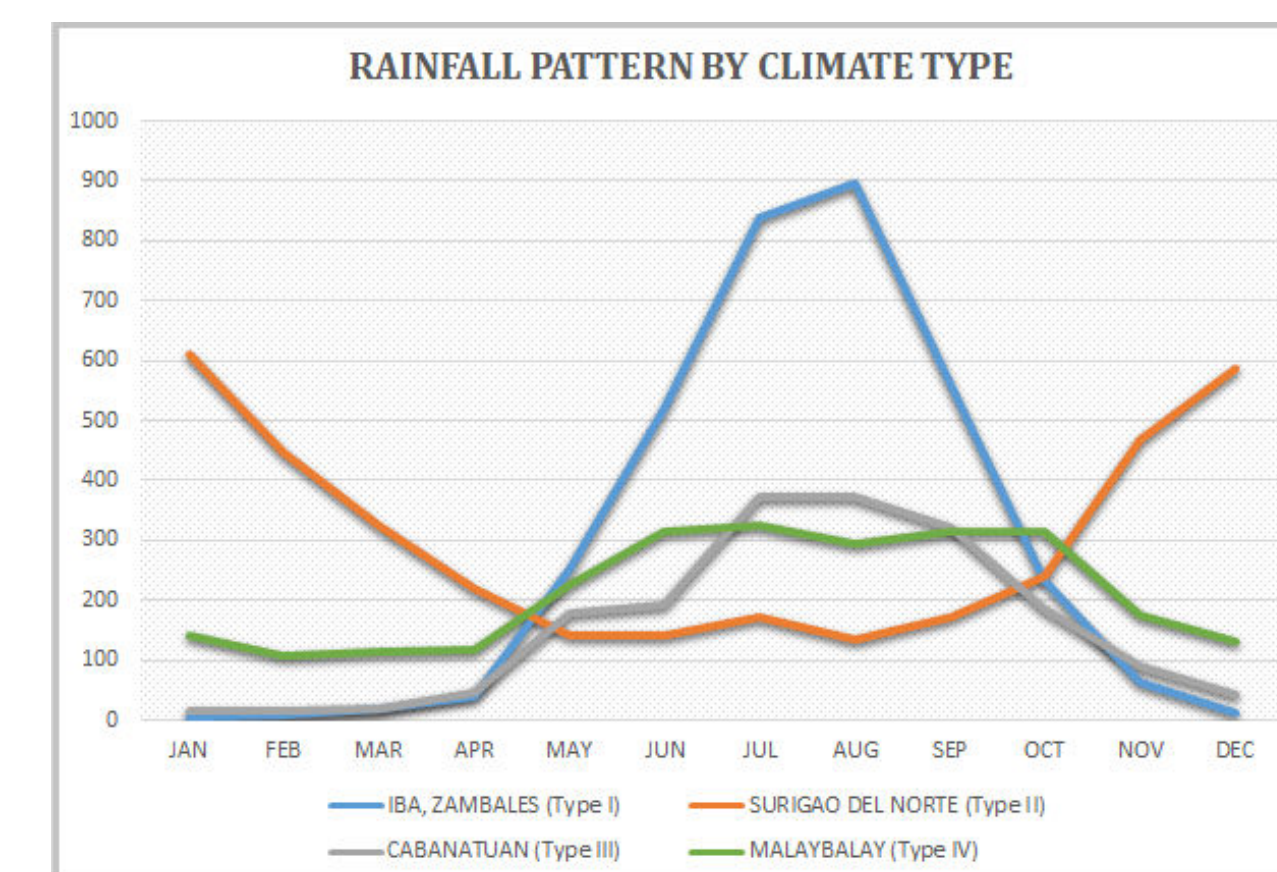
TYPE I : Two pronounced season, dry from November to April and wet during the rest of the year. Maximum rain period is from June to September

TYPE II : No dry season with a very pronounced maximum rain period from December to February. There is not a single dry month. Maximum monthly rainfall occurs during the period from March to May.

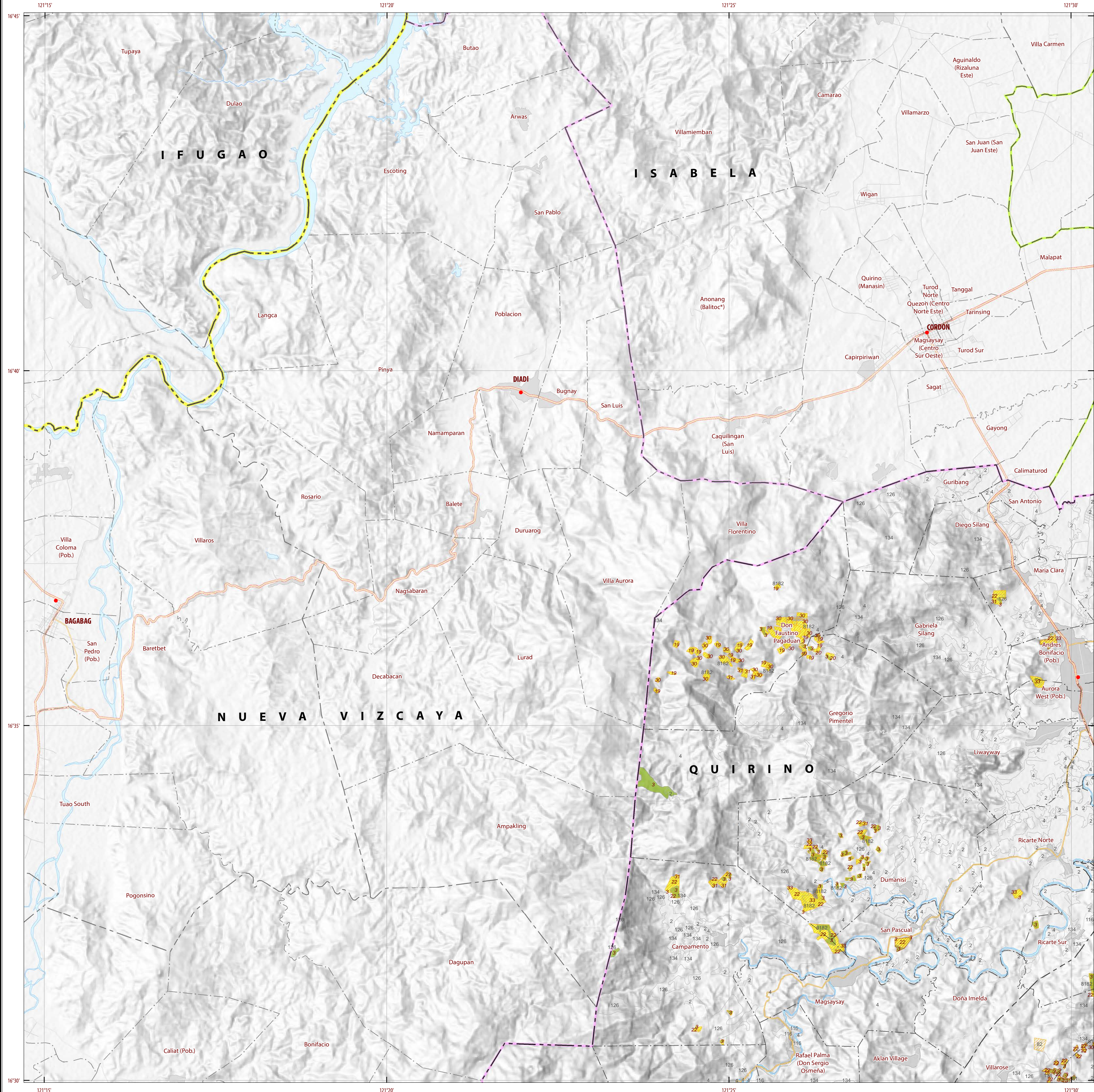
TYPE III : No very pronounced maximum rain period, with a dry season lasting only from one to three months, either during the period from December to February or from March to May. This type resembles Type I since it has a short dry season.

TYPE IV : Rainfall is more or less evenly distributed throughout the year. This type resembles Type II since it has no dry season.

The whole part of Quirino classified as climatic Type III.

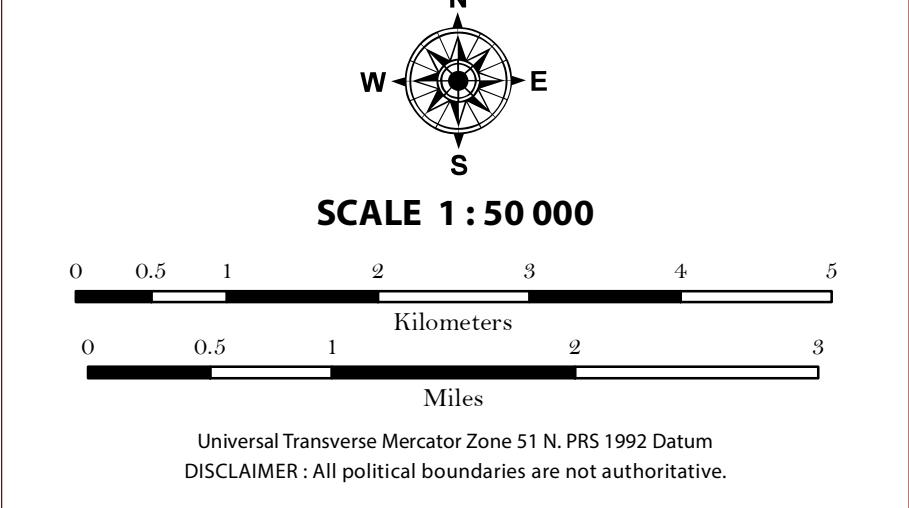


Source: PAGASA 2018, Climatological Normals (Rainfall), Philippine Atmospheric, Geophysical and Astronomical Services Administration (PAGASA), accessed 27 July 2018, <<https://www1.pagasa.dost.gov.ph/index.php/climate/climatological-normals>>.



LAND SUITABILITY MAP ARABICA COFFEE

LAND RESOURCES EVALUATION AND SUITABILITY ASSESSMENT OF STRATEGIC PRODUCTION AREAS



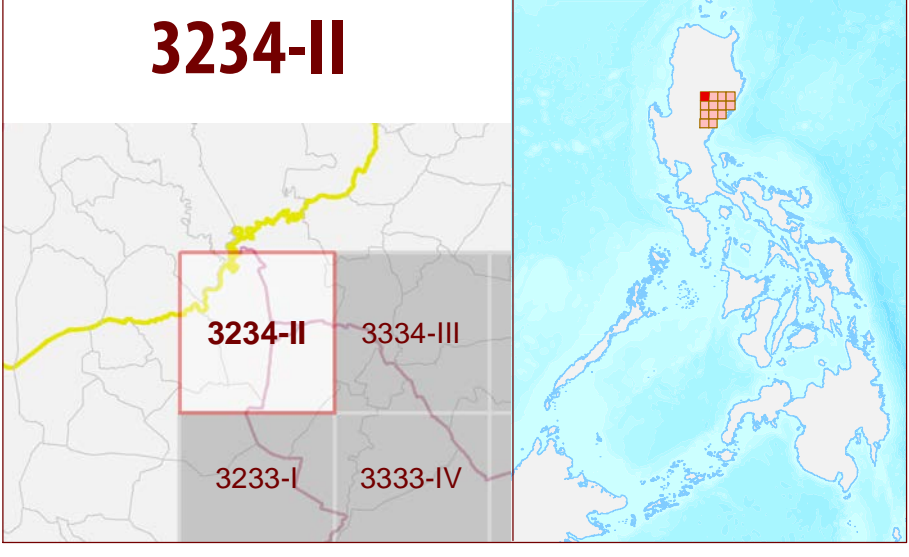
LEGEND

- SUITABILITY CLASSES**
- S1 Highly Suitable** - Land having no significant limitations to sustained application of a given use, or only minor limitations that will not significantly reduce productivity or benefits and will not raise inputs above an acceptable level.
 - S2 Moderately Suitable** - Land having limitations which in aggregate are moderately severe for sustained application of a given use; the limitations will reduce productivity or benefits and increase required inputs to the extent that the overall advantage to be gained from the use, although still attractive, will be appreciably inferior to that expected on class S1 land.
 - S3 Marginally Suitable** - Land having limitations which in aggregate are severe for sustained application of a given use and will so reduce productivity or benefits, or increase required inputs, that this expenditure will be only marginally justified.
 - Not Suitable/ Not Relevant**
- OTHER SIGNS**
- NGP Areas
 - Coffee
 - Land limitation
 - Land use

CONVENTIONAL SIGNS

- ROADS**
- Expressway
 - Trunk line
 - Primary
 - Secondary
 - Tertiary
- BOUNDARY**
- Region
 - Province
 - District
 - Municipality
 - Barangay
- HYDROLOGY**
- Sea / Shoreline
 - Lakes / Rivers
- PLACES**
- Capital City / City
 - Capital Town / Town
- LAND USE**
- Built-up
 - Fishpond
 - Mangrove

ADJOINING SHEETS



MISCELLANEOUS INFORMATION

SOURCES OF INFORMATION: Topographic information taken from NAMRIA Topographic Map at 1:50,000 scale. Land resources information from the Agricultural Land Management and Evaluation Division (ALMED), Soils Survey Division (SSD) and Laboratory Services Division (LSD) of BSWM. Rice areas obtained from the Land Use System (FAO, 2015) and Philippine Rice Information System (PRISM) (IRRI, 2015). Data analysis and compilation through the Land Resources Evaluation and Suitability Assessment of Strategic Production Areas for Coffee and Cocoa Project implemented by BSWM (2017).

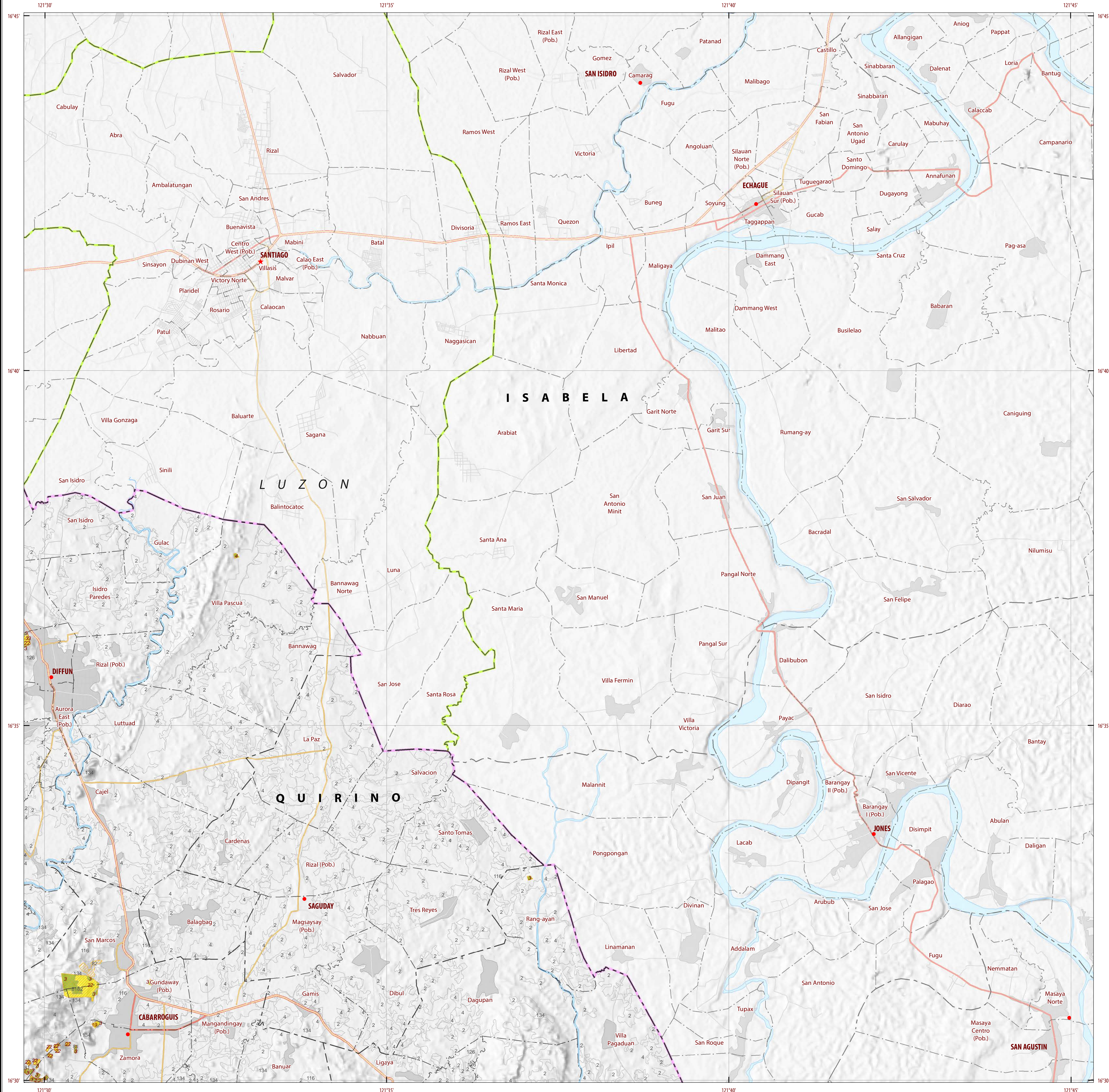
Project Leader : BERNARDO B. PASCUA
GIS and Cartography : IRWIN K. SAMALCA

Funding Agency : Department of Agriculture - Bureau of Agricultural Research (DA-BAR)
Collaborating Agencies : Philippine Council on Agriculture and Fisheries (PCAF)
Department of Agriculture Regional Field Office of CAR, Region II, IV-A, IV-B, VI, VII, VIII, IX, X, XI, XII and CARAGA(XIII)
Local Government Unit (LGU) of covered provinces and municipalities

Map produced by the Geomatics and Soil Information Technology Division, Bureau of Soils and Water Management (BSWM).
Users noting errors or omissions in this publication are requested to inform the Bureau of Soils and Water Management.

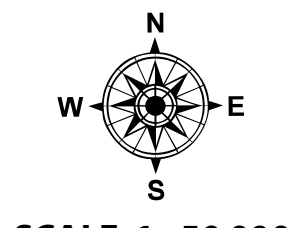
This publication is licensed under a Creative Commons Attribution 4.0 International License. Unless otherwise noted, copyright and any other intellectual property rights, in this publication is owned by the Philippine Government. This publication should be attributed as:
BSWM, 2018. Land Suitability Map Series for Arabica Coffee of the PROVINCE OF QUIRINO (50,000 Scale). CC BY NC SA 4.0.

REPUBLIC OF THE PHILIPPINES
DEPARTMENT OF AGRICULTURE
BUREAU OF SOILS AND WATER MANAGEMENT
SRDC Bldg., Elliptical Road Cor. Viayas Avenue, Diliman, Quezon City 1101
Tel/Fax No.: (+632) 332-9534 E-mail: bswmcenter@yahoo.com

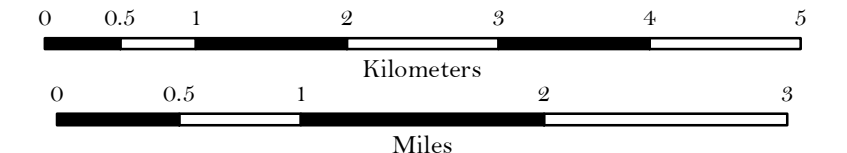


LAND SUITABILITY MAP ARABICA COFFEE

LAND RESOURCES EVALUATION AND SUITABILITY ASSESSMENT OF STRATEGIC PRODUCTION AREAS



SCALE 1 : 50 000



Universal Transverse Mercator Zone 51 N, PRS 1992 Datum
DISCLAIMER: All political boundaries are not authoritative.

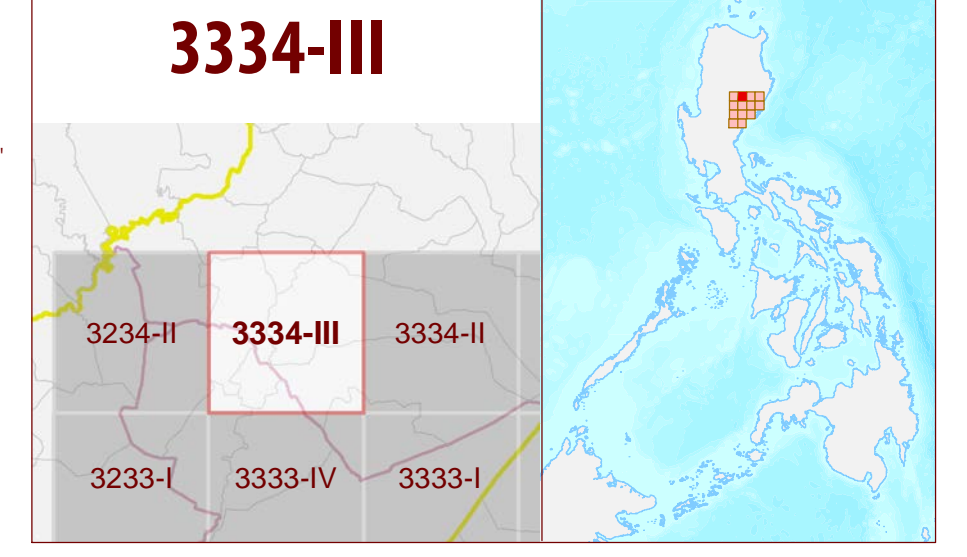
LEGEND

- SUITABILITY CLASSES**
- S1 Highly Suitable** - Land having no significant limitations to sustained application of a given use, or only minor limitations that will not significantly reduce productivity or benefits and will not raise inputs above an acceptable level.
 - S2 Moderately Suitable** - Land having limitations which in aggregate are moderately severe for sustained application of a given use; the limitations will reduce productivity or benefits and increase required inputs to the extent that the overall advantage to be gained from the use, although still attractive, will be appreciably inferior to that expected on class S1 land.
 - S3 Marginally Suitable** - Land having limitations which in aggregate are severe for sustained application of a given use and will so reduce productivity or benefits, or increase required inputs, that this expenditure will be only marginally justified.
- Not Suitable/ Not Relevant**
- OTHER SIGNS**
- NGP Areas
 - Coffee
 - Land limitation
 - Land use

CONVENTIONAL SIGNS

- ROADS**
- Expressway
 - Trunk line
 - Primary
 - Secondary
 - Tertiary
- BOUNDARY**
- Region
 - Province
 - District
 - Municipality
 - Barangay
- HYDROLOGY**
- Sea / Shoreline
 - Lakes / Rivers
- PLACES**
- Capital City / City
 - Capital Town / Town
- LAND USE**
- Built-up
 - Fishpond
 - Mangrove

ADJOINING SHEETS



MISCELLANEOUS INFORMATION

SOURCES OF INFORMATION: Topographic information taken from NAMRIA Topographic Map at 1:50,000 scale. Land resources information from the Agricultural Land Management and Evaluation Division (ALMED), Soils Survey Division (SSD) and Laboratory Services Division (LSD) of BSWM. Rice areas obtained from the Land Use System (FAO, 2015) and Philippine Rice Information System (PRISM) (IRRI, 2015). Data analysis and compilation through the Land Resources Evaluation and Suitability Assessment of Strategic Production Areas for Coffee and Cocoa Project implemented by BSWM (2017).

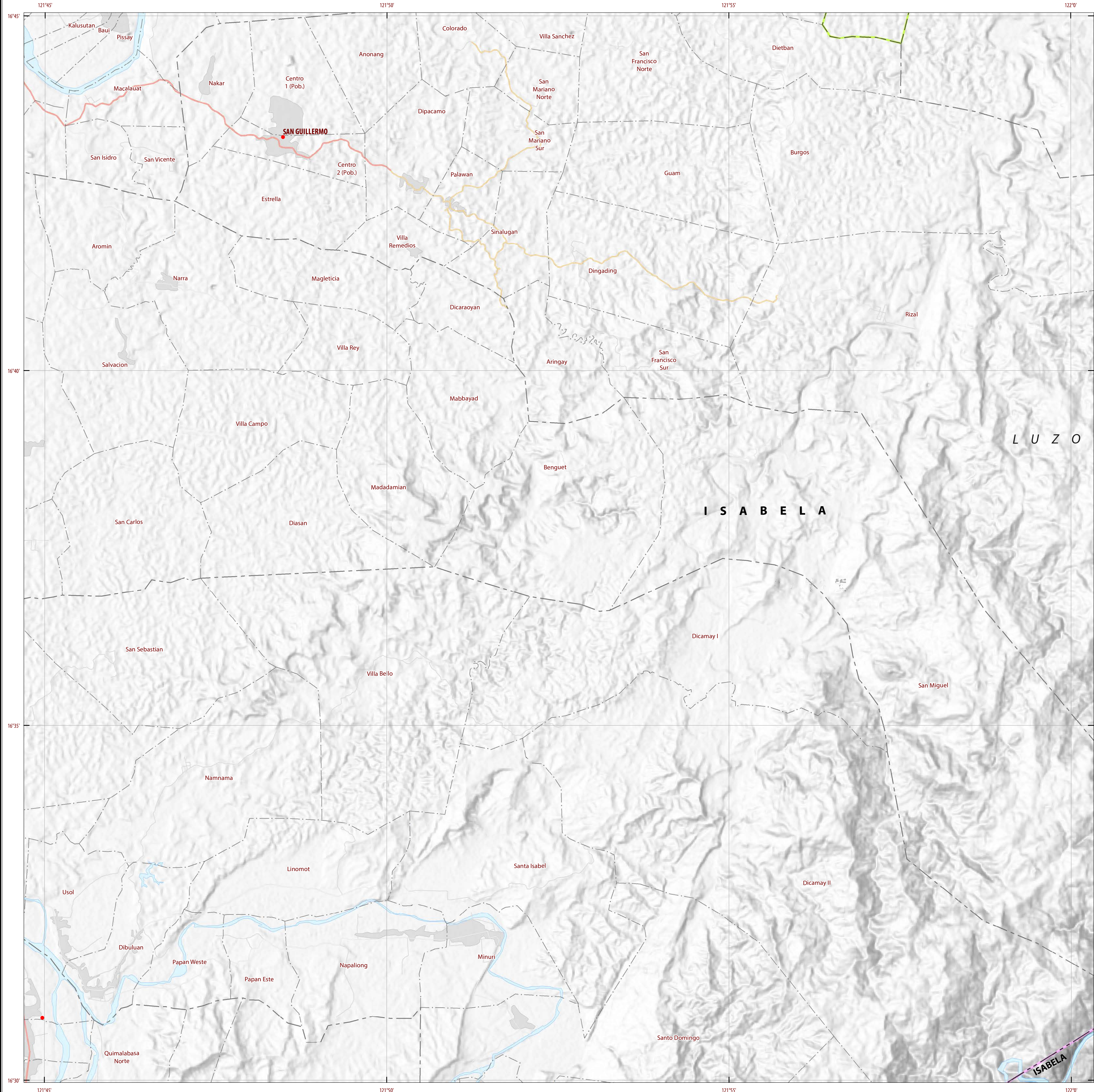
Project Leader : BERNARDO B. PASCUA
GIS and Cartography : IRWIN K. SAMALCA

Funding Agency : Department of Agriculture - Bureau of Agricultural Research (DA-BAR)
Collaborating Agencies : Philippine Council on Agriculture and Fisheries (PCAF)
Department of Agriculture Regional Field Office of CAR, Region II, IV-A, IV-B, VI, VII, VIII, IX, X, XI, XII and CARAGA(XII)
Local Government Unit (LGU) of covered provinces and municipalities

Map produced by the Geomatics and Soil Information Technology Division, Bureau of Soils and Water Management (BSWM). Users noting errors or omissions in this publication are requested to inform the Bureau of Soils and Water Management.

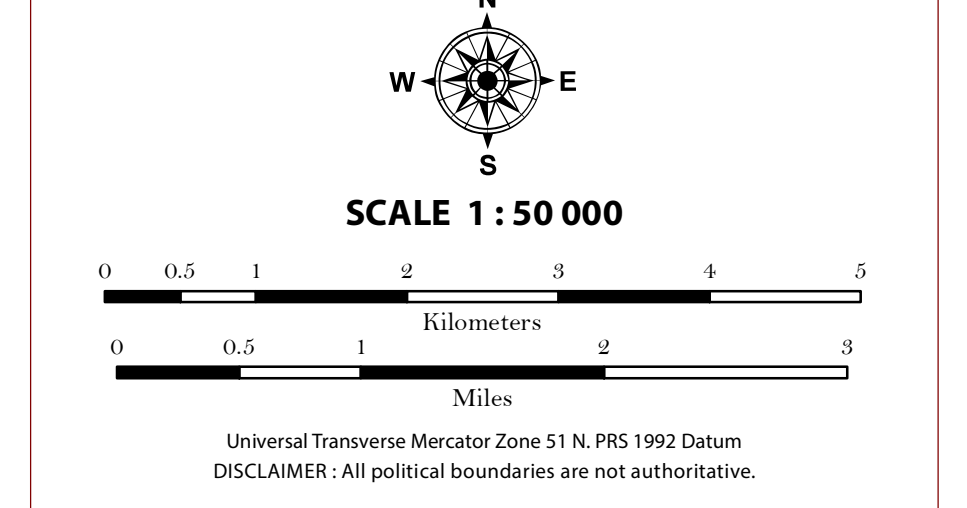
This publication is licensed under a Creative Commons Attribution 4.0 International License. Unless otherwise noted, copyright and any other intellectual property rights, in this publication is owned by the Philippine Government. This publication should be attributed as:
BSWM, 2018. Land Suitability Map Series for Arabica Coffee of the PROVINCE OF QUIRINO (50,000 Scale). CC BY NC SA 4.0.

REPUBLIC OF THE PHILIPPINES
DEPARTMENT OF AGRICULTURE
BUREAU OF SOILS AND WATER MANAGEMENT
SRDC Bldg, Elliptical Road Cor. Visayas Avenue, Diliman, Quezon City 1101
Tel/Fax No.: (+632) 332-9534 E-mail: bswmcenter@da.gov.ph



LAND SUITABILITY MAP ARABICA COFFEE

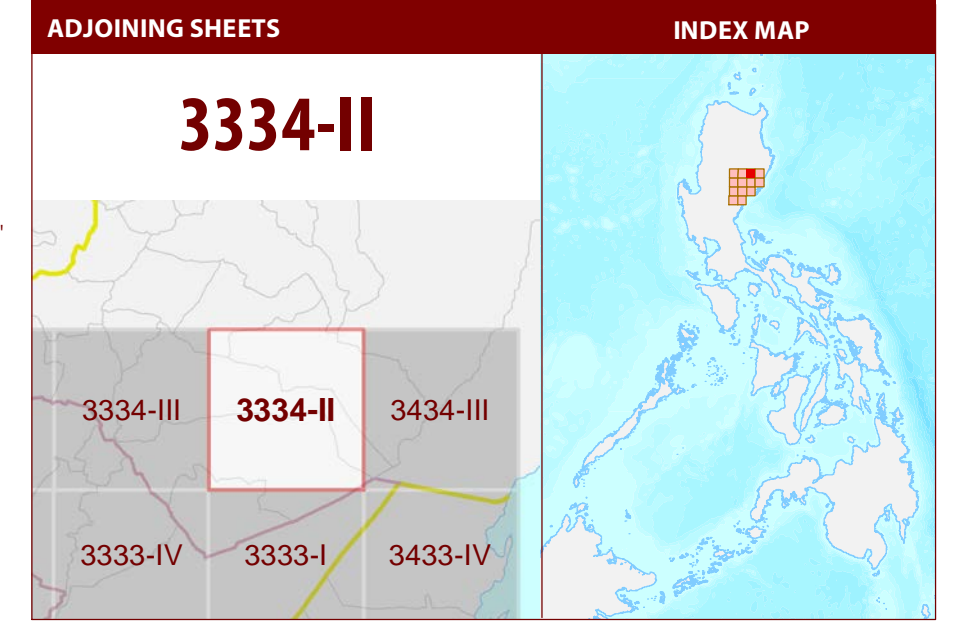
LAND RESOURCES EVALUATION AND SUITABILITY ASSESSMENT OF STRATEGIC PRODUCTION AREAS



LEGEND

- SUITABILITY CLASSES**
- S1 Highly Suitable** - Land having no significant limitations to sustained application of a given use, or only minor limitations that will not significantly reduce productivity or benefits and will not raise inputs above an acceptable level.
 - S2 Moderately Suitable** - Land having limitations which in aggregate are moderately severe for sustained application of a given use; the limitations will reduce productivity or benefits and increase required inputs to the extent that the overall advantage to be gained from the use, although still attractive, will be appreciably inferior to that expected on class S1 land.
 - S3 Marginally Suitable** - Land having limitations which in aggregate are severe for sustained application of a given use and will so reduce productivity or benefits, or increase required inputs, that this expenditure will be only marginally justified.
- Not Suitable/ Not Relevant**
- OTHER SIGNS**
- NGP Areas
 - Coffee
 - Land limitation
 - Land use

- CONVENTIONAL SIGNS**
- | | | |
|--------------|-----------------|---------------------|
| ROADS | BOUNDARY | HYDROLOGY |
| Expressway | Region | Sea / Shoreline |
| Trunk line | Province | Lakes / Rivers |
| Primary | District | PLACES |
| Secondary | Municipality | Capital City / City |
| Tertiary | Barangay | Capital Town / Town |
- LAND USE**
- Built-up
 - Fishpond
 - Mangrove



MISCELLANEOUS INFORMATION

SOURCES OF INFORMATION: Topographic information taken from NAMRIA Topographic Map at 1:50,000 scale. Land resources information from the Agricultural Land Management and Evaluation Division (ALMED), Soils Survey Division (SSD) and Laboratory Services Division (LSD) of BSWM. Rice areas obtained from the Land Use System (FAO, 2015) and Philippine Rice Information System (PRISM) (IRRI, 2015). Data analysis and compilation through the Land Resources Evaluation and Suitability Assessment of Strategic Production Areas for Coffee and Cocoa Project implemented by BSWM (2017).

Project Leader : BERNARDO B. PASCUA
GIS and Cartography : IRWIN K. SAMALCA

Funding Agency : Department of Agriculture - Bureau of Agricultural Research (DA-BAR)
Collaborating Agencies : Philippine Council on Agriculture and Fisheries (PCAF)
: Department of Agriculture Regional Field Office of CAR, Region II, IV-A, IV-B, VI, VII, VIII, IX, X, XI, XII and CARAGA(XIII)
: Local Government Unit (LGU) of covered provinces and municipalities

Map produced by the Geomatics and Soil Information Technology Division, Bureau of Soils and Water Management (BSWM).
Users noting errors or omissions in this publication are requested to inform the Bureau of Soils and Water Management.

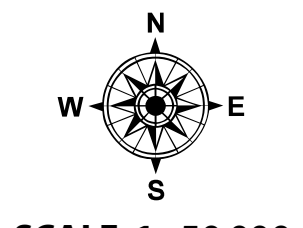
This publication is licensed under a Creative Commons Attribution 4.0 International License. Unless otherwise noted, copyright and any other intellectual property rights, in this publication is owned by the Philippine Government. This publication should be attributed as:
BSWM, 2018. Land Suitability Map Series for Arabica Coffee of the PROVINCE OF QUIRINO (50,000 Scale). CC BY-NC-SA 4.0.

REPUBLIC OF THE PHILIPPINES
DEPARTMENT OF AGRICULTURE
BUREAU OF SOILS AND WATER MANAGEMENT
SRDC Bldg, Elliptical Road Cor. Visayas Avenue, Diliman, Quezon City 1101
Tel/Fax No.: (+632) 332-9534 E-mail: bswmcenter@yahoo.com



LAND SUITABILITY MAP ARABICA COFFEE

LAND RESOURCES EVALUATION AND SUITABILITY ASSESSMENT OF STRATEGIC PRODUCTION AREAS



SCALE 1 : 50 000

0 0.5 1 2 3 4 5
Kilometers

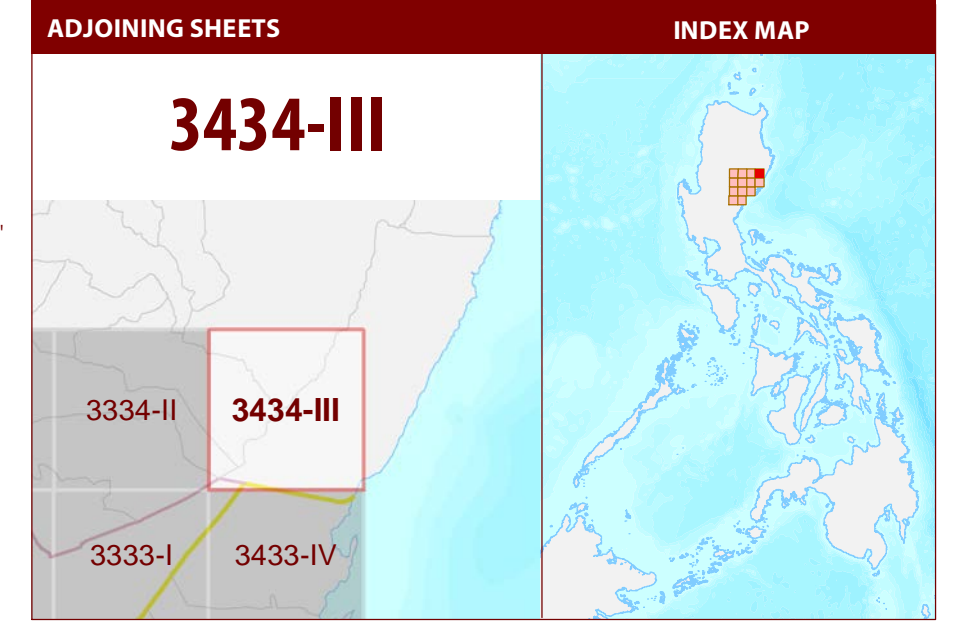
0 0.5 1 2 3
Miles

Universal Transverse Mercator Zone 51 N, PRS 1992 Datum
DISCLAIMER: All political boundaries are not authoritative.

LEGEND

- SUITABILITY CLASSES**
- S1 Highly Suitable** - Land having no significant limitations to sustained application of a given use, or only minor limitations that will not significantly reduce productivity or benefits and will not raise inputs above an acceptable level.
 - S2 Moderately Suitable** - Land having limitations which in aggregate are moderately severe for sustained application of a given use; the limitations will reduce productivity or benefits and increase required inputs to the extent that the overall advantage to be gained from the use, although still attractive, will be appreciably inferior to that expected on class S1 land.
 - S3 Marginally Suitable** - Land having limitations which in aggregate are severe for sustained application of a given use and will so reduce productivity or benefits, or increase required inputs, that this expenditure will be only marginally justified.
 - Not Suitable/ Not Relevant**
- OTHER SIGNS**
- NGP Areas
 - Coffee
 - Land limitation
 - Land use

- CONVENTIONAL SIGNS**
- | | | |
|--------------|-----------------|-----------------------|
| ROADS | BOUNDARY | HYDROLOGY |
| Expressway | Region | Sea / Shoreline |
| Trunk line | Province | Lakes / Rivers |
| Primary | District | PLACES |
| Secondary | Municipality | ★ Capital City / City |
| Tertiary | Barangay | ● Capital Town / Town |
- LAND USE**
- Built-up
 - Fishpond
 - Mangrove



MISCELLANEOUS INFORMATION

SOURCES OF INFORMATION: Topographic information taken from NAMRIA Topographic Map at 1:50,000 scale. Land resources information from the Agricultural Land Management and Evaluation Division (ALMED), Soils Survey Division (SSD) and Laboratory Services Division (LSD) of BSWM. Rice areas obtained from the Land Use System (FAO, 2015) and Philippine Rice Information System (PRISM) (IRRI, 2015). Data analysis and compilation through the Land Resources Evaluation and Suitability Assessment of Strategic Production Areas for Coffee and Cacao Project implemented by BSWM (2017).

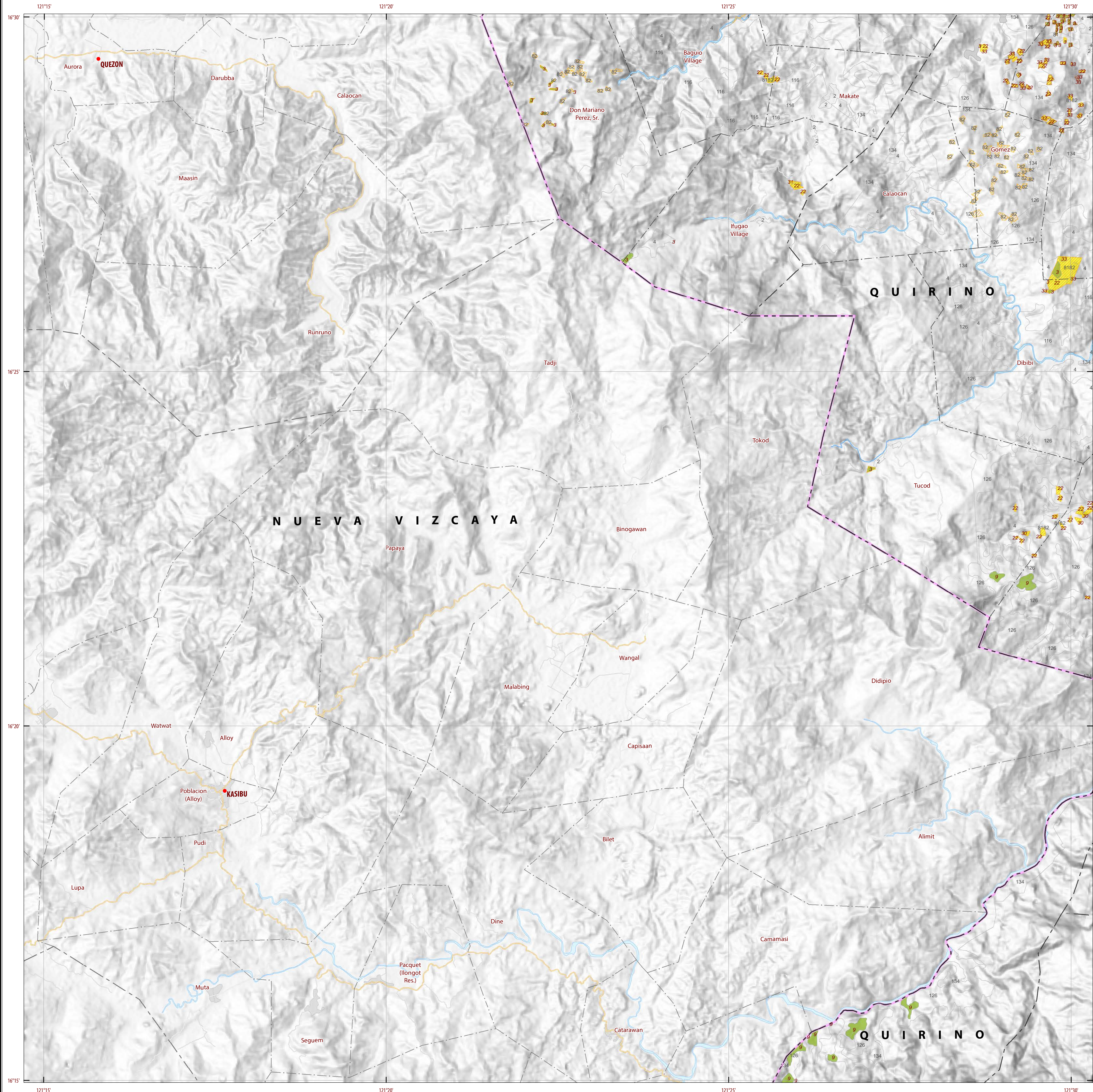
Project Leader : BERNARDO B. PASCUA
GIS and Cartography : IRWIN K. SAMALCA

Funding Agency : Department of Agriculture - Bureau of Agricultural Research (DA-BAR)
Collaborating Agencies : Philippine Council on Agriculture and Fisheries (PCAF)
: Department of Agriculture Regional Field Office of CAR, Region II, IV-A, IV-B, VI, VII, VIII, IX, X, XI, XII and CARAGA(XIII)
: Local Government Unit (LGU) of covered provinces and municipalities

Map produced by the Geomatics and Soil Information Technology Division, Bureau of Soils and Water Management (BSWM).
Users noting errors or omissions in this publication are requested to inform the Bureau of Soils and Water Management.

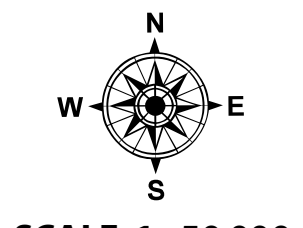
This publication is licensed under a Creative Commons Attribution 4.0 International License. Unless otherwise noted, copyright and any other intellectual property rights, in this publication is owned by the Philippine Government. This publication should be attributed as:
BSWM, 2018. Land Suitability Map Series for Arabica Coffee of the PROVINCE OF QUIRINO (50,000 Scale). CC BY NC SA 4.0.

REPUBLIC OF THE PHILIPPINES
DEPARTMENT OF AGRICULTURE
BUREAU OF SOILS AND WATER MANAGEMENT
SRDC Bldg, Elliptical Road Cor. Visayas Avenue, Diliman, Quezon City 1101
Tel/Fax No.: (+632) 332-9534 E-mail: bswmcenter@yahoo.com

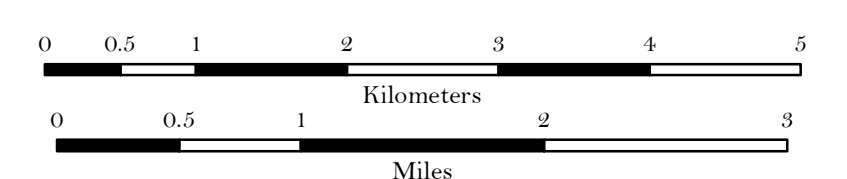


LAND SUITABILITY MAP ARABICA COFFEE

LAND RESOURCES EVALUATION AND SUITABILITY
ASSESSMENT OF STRATEGIC PRODUCTION AREAS



SCALE 1 : 50 000



Universal Transverse Mercator Zone 51 N, PRS 1992 Datum
DISCLAIMER: All political boundaries are not authoritative.

LEGEND

SUITABILITY CLASSES

- S1 Highly Suitable** - Land having no significant limitations to sustained application of a given use, or only minor limitations that will not significantly reduce productivity or benefits and will not raise inputs above an acceptable level.
- S2 Moderately Suitable** - Land having limitations which in aggregate are moderately severe for sustained application of a given use; the limitations will reduce productivity or benefits and increase required inputs to the extent that the overall advantage to be gained from the use, although still attractive, will be appreciably inferior to that expected on class S1 land.
- S3 Marginally Suitable** - Land having limitations which in aggregate are severe for sustained application of a given use and will so reduce productivity or benefits, or increase required inputs, that this expenditure will be only marginally justified.
- Not Suitable/ Not Relevant**

OTHER SIGNS

- NGP Areas
- Coffee
- Land limitation
- Land use

CONVENTIONAL SIGNS

ROADS	BOUNDARY	HYDROLOGY
Expressway	Region	Sea / Shoreline
Trunk line	Province	Lakes / Rivers
Primary	District	PLACES
Secondary	Municipality	★ Capital City / City
Tertiary	Barangay	● Capital Town / Town
LAND USE		
Built-up	Fishpond	Mangrove

ADJOINING SHEETS

3233-I

3234-II 3334-III

3233-II 3333-IV

3233-III 3333-III

INDEX MAP

MISCELLANEOUS INFORMATION

SOURCES OF INFORMATION: Topographic information taken from NAMRIA Topographic Map at 1:50,000 scale. Land resources information from the Agricultural Land Management and Evaluation Division (ALMED), Soils Survey Division (SSD) and Laboratory Services Division (LSD) of BSWM. Rice areas obtained from the Land Use System (FAO, 2015) and Philippine Rice Information System (PRISM) (IRRI, 2015). Data analysis and compilation through the Land Resources Evaluation and Suitability Assessment of Strategic Production Areas for Coffee and Cocoa Project implemented by BSWM (2017).

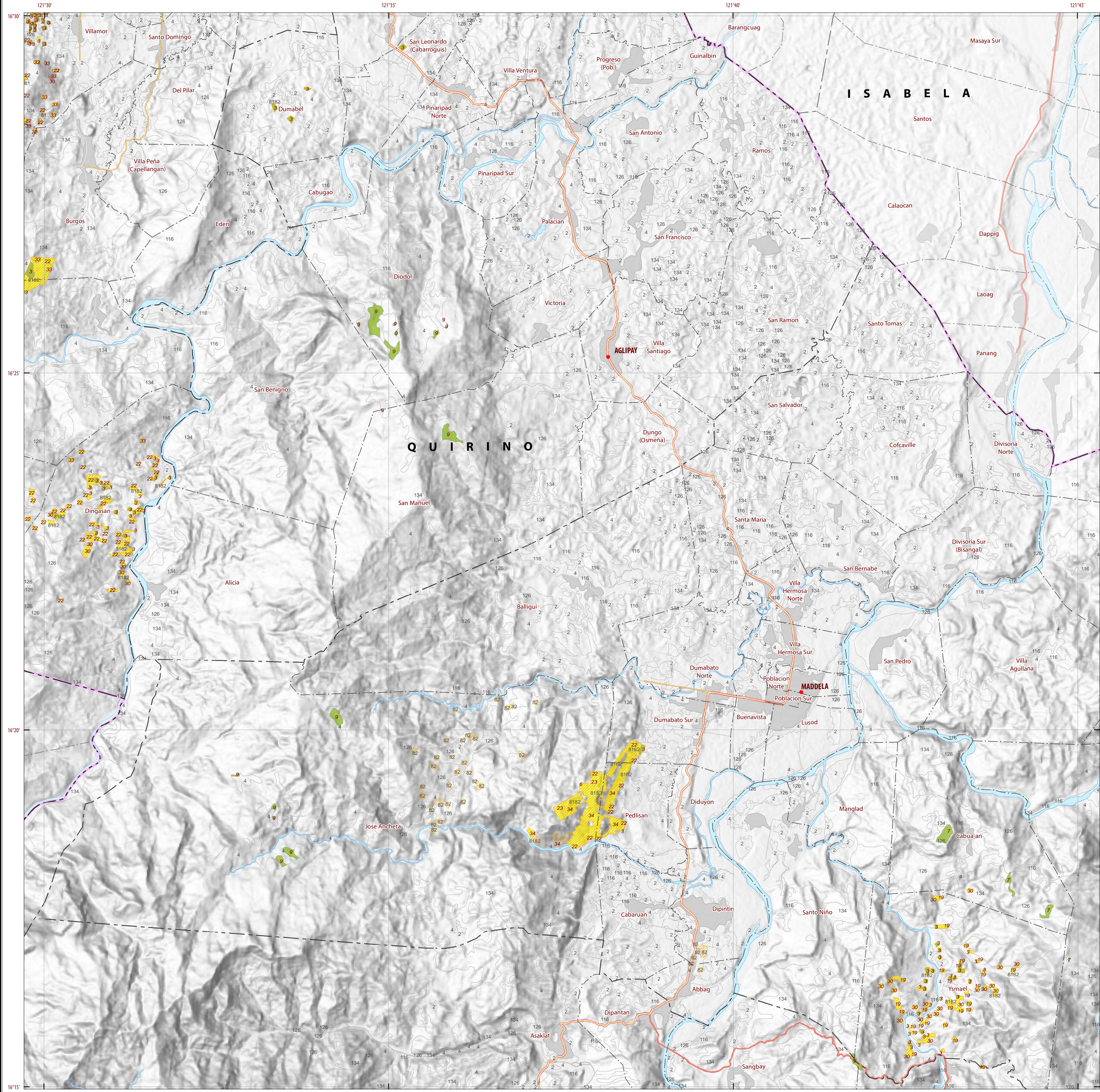
Project Leader : BERNARDO B. PASCUJA
GIS and Cartography : IRWIN K. SAMALCA

Funding Agency : Department of Agriculture - Bureau of Agricultural Research (DA-BAR)
Collaborating Agencies : Philippine Council on Agriculture and Fisheries (PCAF)
: Department of Agriculture Regional Field Office of CAR, Region II, IV-A, IV-B, VI, VII, VIII, IX, X, XI, XII and CARAGA(XIII)
: Local Government Unit (LGU) of covered provinces and municipalities

Map produced by the Geomatics and Soil Information Technology Division, Bureau of Soils and Water Management (BSWM).
Users noting errors or omissions in this publication are requested to inform the Bureau of Soils and Water Management.

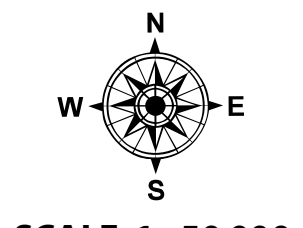
This publication is licensed under a Creative Commons Attribution 4.0 International License. Unless otherwise noted, copyright and any other intellectual property rights, in this publication is owned by the Philippine Government. This publication should be attributed as:
BSWM, 2018. Land Suitability Map Series for Arabica Coffee of the PROVINCE OF QUIRINO (50,000 Scale). CC BY NC SA 4.0.

REPUBLIC OF THE PHILIPPINES
DEPARTMENT OF AGRICULTURE
BUREAU OF SOILS AND WATER MANAGEMENT
SRDC Bldg, Elliptical Road Cor. Visayas Avenue, Diliman, Quezon City 1101
Tel/Fax No.: (+632) 332-9534 E-mail: bswmcenter@psa.gov.ph

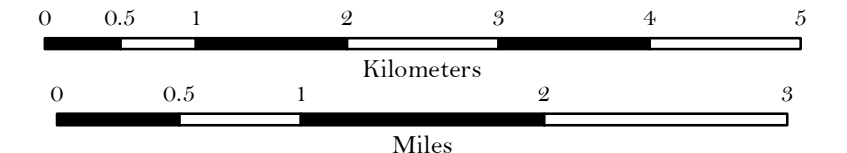


LAND SUITABILITY MAP ARABICA COFFEE

LAND RESOURCES EVALUATION AND SUITABILITY ASSESSMENT OF STRATEGIC PRODUCTION AREAS



SCALE 1 : 50 000



Universal Transverse Mercator Zone 51 N, PRS 1992 Datum
DISCLAIMER: All political boundaries are not authoritative.

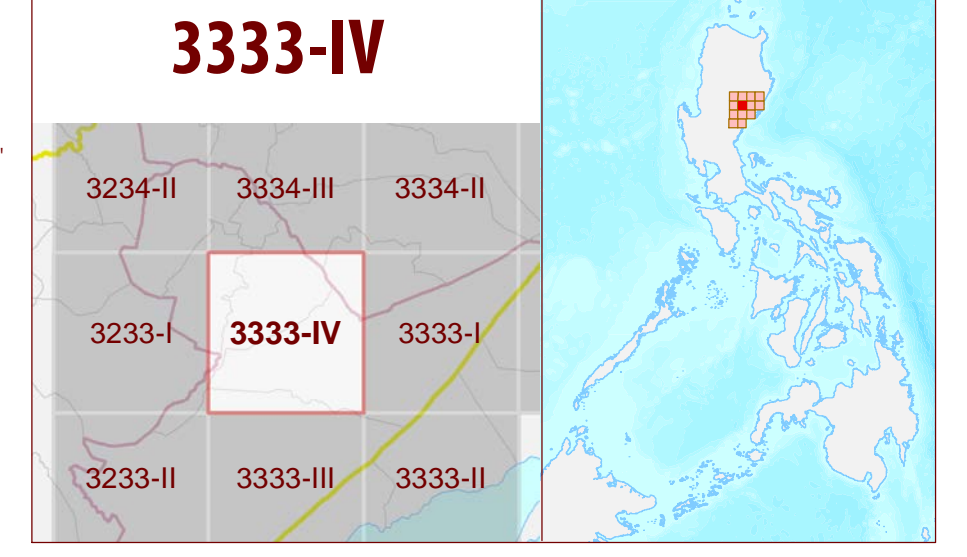
LEGEND

- SUITABILITY CLASSES**
- S1 Highly Suitable** - Land having no significant limitations to sustained application of a given use, or only minor limitations that will not significantly reduce productivity or benefits and will not raise inputs above an acceptable level.
 - S2 Moderately Suitable** - Land having limitations which in aggregate are moderately severe for sustained application of a given use; the limitations will reduce productivity or benefits and increase required inputs to the extent that the overall advantage to be gained from the use, although still attractive, will be appreciably inferior to that expected on class S1 land.
 - S3 Marginally Suitable** - Land having limitations which in aggregate are severe for sustained application of a given use and will so reduce productivity or benefits, or increase required inputs, that this expenditure will be only marginally justified.
- Not Suitable/ Not Relevant**
- OTHER SIGNS**
- NGP Areas
 - Coffee
 - Land limitation
 - Land use

CONVENTIONAL SIGNS

- ROADS**
- Expressway
 - Trunk line
 - Primary
 - Secondary
 - Tertiary
- BOUNDARY**
- Region
 - Province
 - District
 - Municipality
 - Barangay
- HYDROLOGY**
- Sea / Shoreline
 - Lakes / Rivers
- PLACES**
- Capital City / City
 - Capital Town / Town
- LAND USE**
- Built-up
 - Fishpond
 - Mangrove

ADJOINING SHEETS



MISCELLANEOUS INFORMATION

SOURCES OF INFORMATION: Topographic information taken from NAMRIA Topographic Map at 1:50,000 scale. Land resources information from the Agricultural Land Management and Evaluation Division (ALMED), Soils Survey Division (SSD) and Laboratory Services Division (LSD) of BSWM. Rice areas obtained from the Land Use System (FAO, 2015) and Philippine Rice Information System (PRISM) (IRRI, 2015). Data analysis and compilation through the Land Resources Evaluation and Suitability Assessment of Strategic Production Areas for Coffee and Cocoa Project implemented by BSWM (2017).

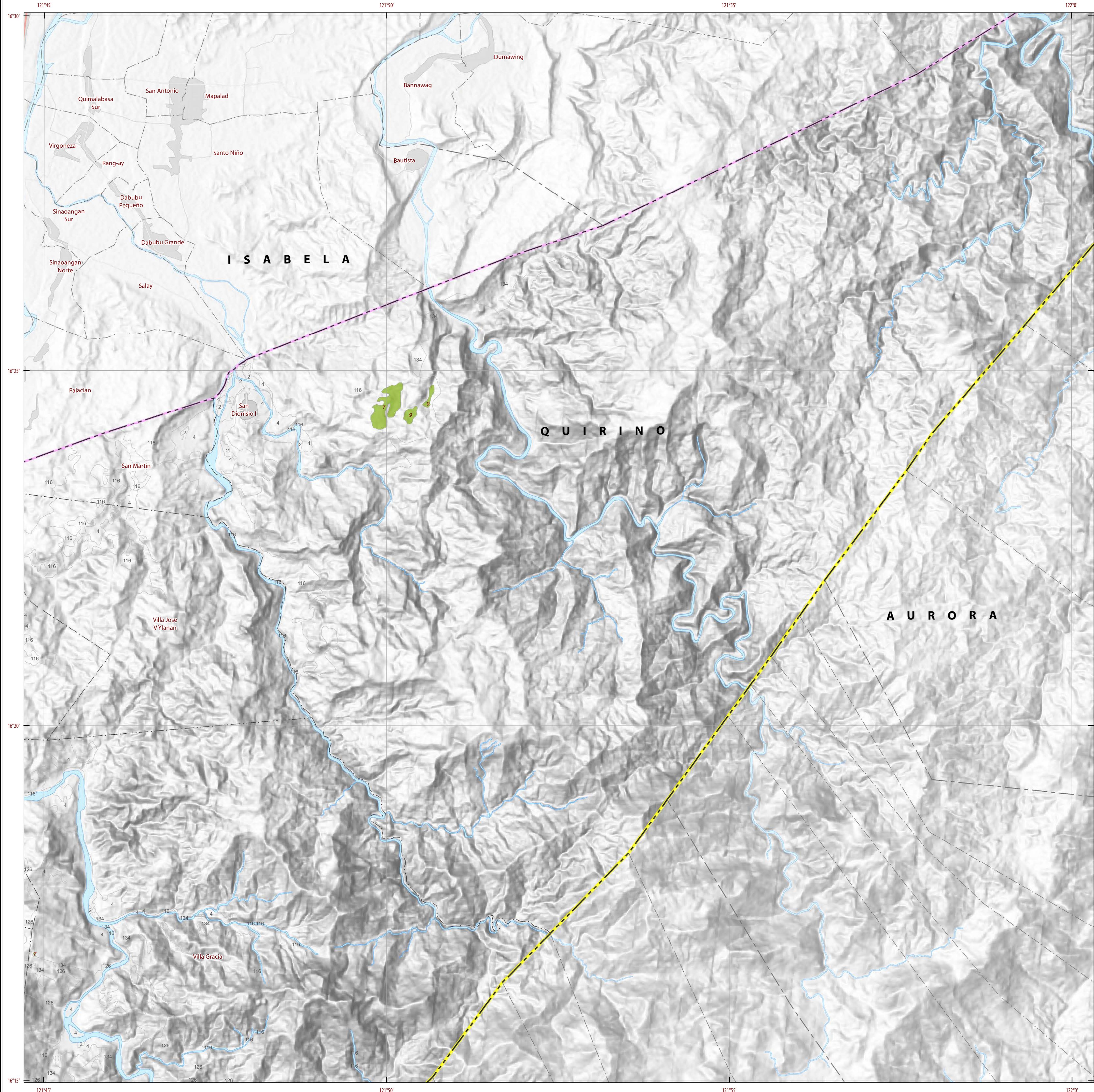
Project Leader : BERNARDO B. PASCUA
GIS and Cartography : IRWIN K. SAMALCA

Funding Agency : Department of Agriculture - Bureau of Agricultural Research (DA-BAR)
Collaborating Agencies : Philippine Council on Agriculture and Fisheries (PCAF)
Department of Agriculture Regional Field Office of CAR, Region II, IV-A, IV-B, VI, VII, VIII, IX, X, XI, XII and CARAGA(XIII)
Local Government Unit (LGU) of covered provinces and municipalities

Map produced by the Geomatics and Soil Information Technology Division, Bureau of Soils and Water Management (BSWM).
Users noting errors or omissions in this publication are requested to inform the Bureau of Soils and Water Management.

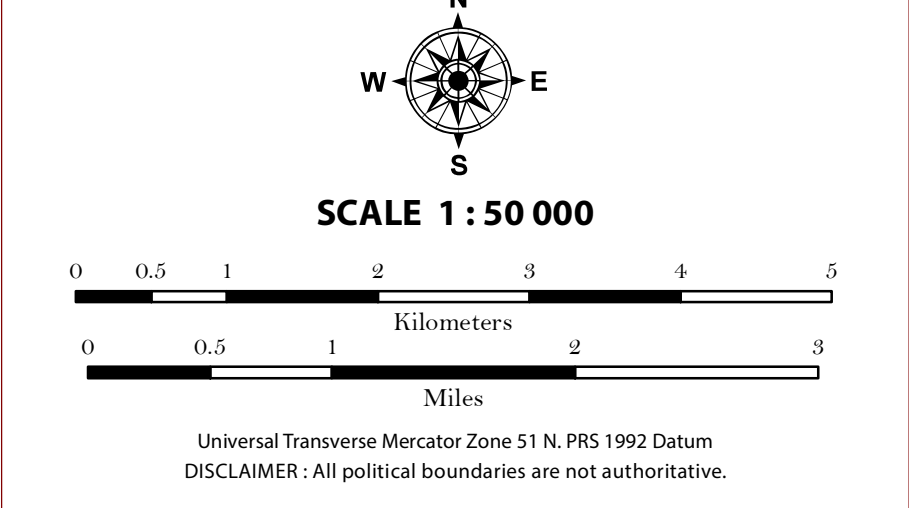
This publication is licensed under a Creative Commons Attribution 4.0 International License. Unless otherwise noted, copyright and any other intellectual property rights, in this publication is owned by the Philippine Government. This publication should be attributed as:
BSWM, 2018. Land Suitability Map Series for Arabica Coffee of the PROVINCE OF QUIRINO (50,000 Scale). CC BY-NC-SA 4.0.

REPUBLIC OF THE PHILIPPINES
DEPARTMENT OF AGRICULTURE
BUREAU OF SOILS AND WATER MANAGEMENT
SRDC Bldg, Elliptical Road Cor. Visayas Avenue, Diliman, Quezon City 1101
Tel/Fax No. : (+632) 332-9534 E-mail: bswmcenter@da.gov.ph



LAND SUITABILITY MAP ARABICA COFFEE

LAND RESOURCES EVALUATION AND SUITABILITY ASSESSMENT OF STRATEGIC PRODUCTION AREAS



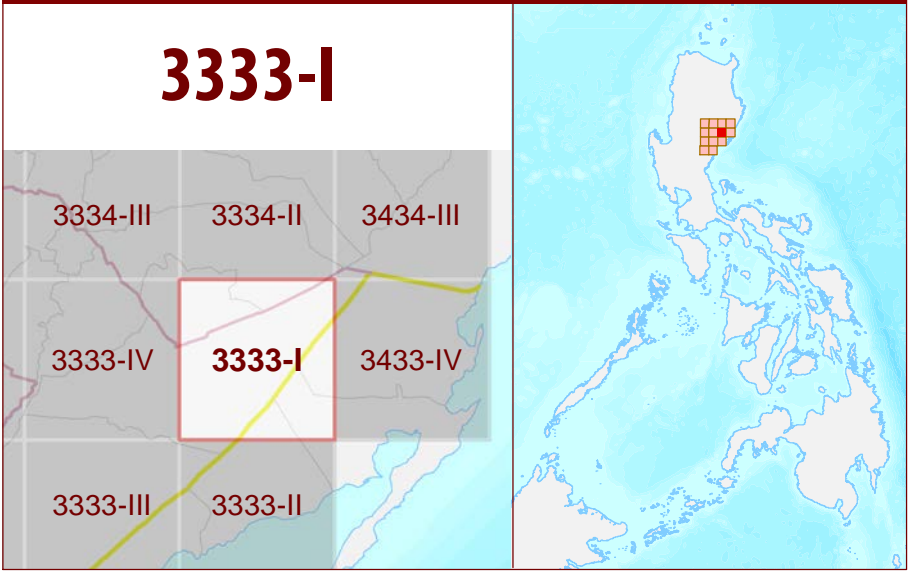
LEGEND

- SUITABILITY CLASSES**
- S1 Highly Suitable** - Land having no significant limitations to sustained application of a given use, or only minor limitations that will not significantly reduce productivity or benefits and will not raise inputs above an acceptable level.
 - S2 Moderately Suitable** - Land having limitations which in aggregate are moderately severe for sustained application of a given use; the limitations will reduce productivity or benefits and increase required inputs to the extent that the overall advantage to be gained from the use, although still attractive, will be appreciably inferior to that expected on class S1 land.
 - S3 Marginally Suitable** - Land having limitations which in aggregate are severe for sustained application of a given use and will so reduce productivity or benefits, or increase required inputs, that this expenditure will be only marginally justified.
- Not Suitable/ Not Relevant**
- OTHER SIGNS**
- NGP Areas
 - Coffee
 - Land limitation
 - Land use

CONVENTIONAL SIGNS

- | | | |
|-----------------|-----------------|-----------------------|
| ROADS | BOUNDARY | HYDROLOGY |
| Expressway | Region | Sea / Shoreline |
| Trunk line | Province | Lakes / Rivers |
| Primary | District | PLACES |
| Secondary | Municipality | ★ Capital City / City |
| Tertiary | Barangay | ● Capital Town / Town |
| LAND USE | | |
| Built-up | Fishpond | Mangrove |

ADJOINING SHEETS



MISCELLANEOUS INFORMATION

SOURCES OF INFORMATION: Topographic information taken from NAMRIA Topographic Map at 1:50,000 scale. Land resources information from the Agricultural Land Management and Evaluation Division (ALMED), Soils Survey Division (SSD) and Laboratory Services Division (LSD) of BSWM. Rice areas obtained from the Land Use System (FAO, 2015) and Philippine Rice Information System (PRISM) (IRRI, 2015). Data analysis and compilation through the Land Resources Evaluation and Suitability Assessment of Strategic Production Areas for Coffee and Cacao Project implemented by BSWM (2017).

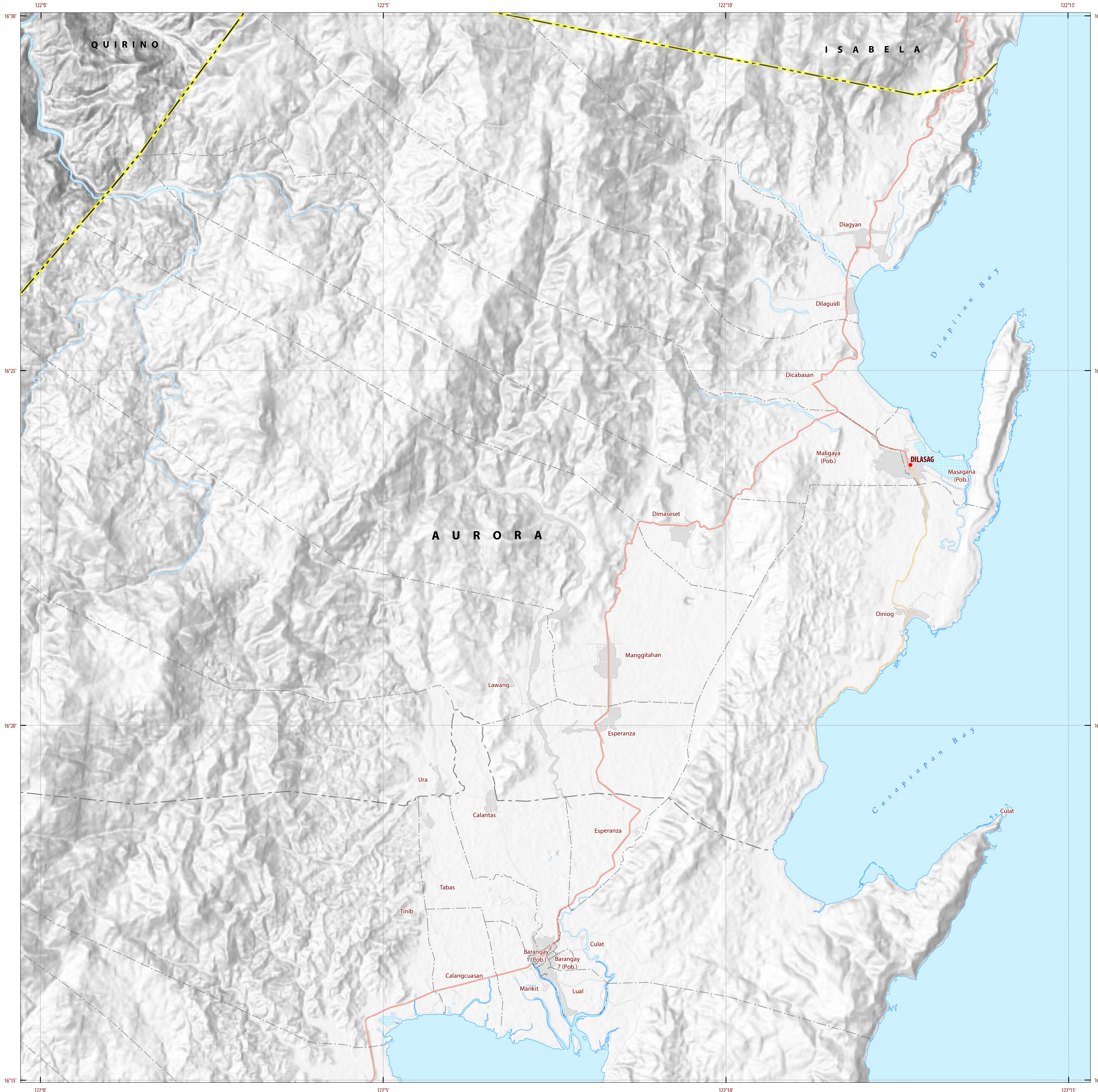
Project Leader : BERNARDO B. PASCUA
 GIS and Cartography : IRWIN K. SAMALCA

Funding Agency : Department of Agriculture - Bureau of Agricultural Research (DA-BAR)
 Collaborating Agencies : Philippine Council on Agriculture and Fisheries (PCAF)
 : Department of Agriculture Regional Field Office of CAR, Region II, IV-A, IV-B, VI, VII, VIII, IX, X, XI, XII and CARAGA(XIII)
 : Local Government Unit (LGU) of covered provinces and municipalities

Map produced by the Geomatics and Soil Information Technology Division, Bureau of Soils and Water Management (BSWM).
 Users noting errors or omissions in this publication are requested to inform the Bureau of Soils and Water Management.

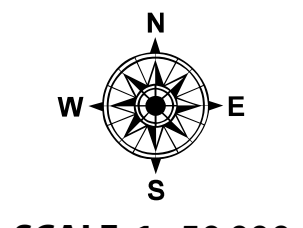
This publication is licensed under a Creative Commons Attribution 4.0 International License. Unless otherwise noted, copyright and any other intellectual property rights, in this publication is owned by the Philippine Government. This publication should be attributed as:
 BSWM, 2018. Land Suitability Map Series for Arabica Coffee of the PROVINCE OF QUIRINO (50,000 Scale). CC BY NC SA 4.0.

**REPUBLIC OF THE PHILIPPINES
 DEPARTMENT OF AGRICULTURE
 BUREAU OF SOILS AND WATER MANAGEMENT**
 SRDC Bldg, Elliptical Road Cor. Visayas Avenue, Diliman, Quezon City 1101
 Tel/Fax No. : (+632) 332-9534 E-mail : bswmcenter@yahoo.com

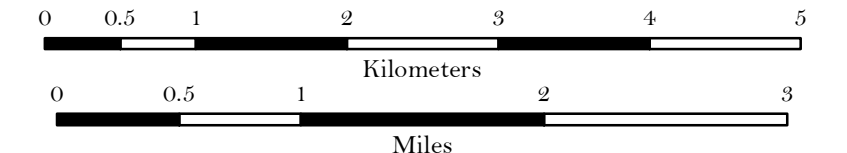


LAND SUITABILITY MAP ARABICA COFFEE

LAND RESOURCES EVALUATION AND SUITABILITY ASSESSMENT OF STRATEGIC PRODUCTION AREAS



SCALE 1 : 50 000



Universal Transverse Mercator Zone 51 N, PRS 1992 Datum
DISCLAIMER: All political boundaries are not authoritative.

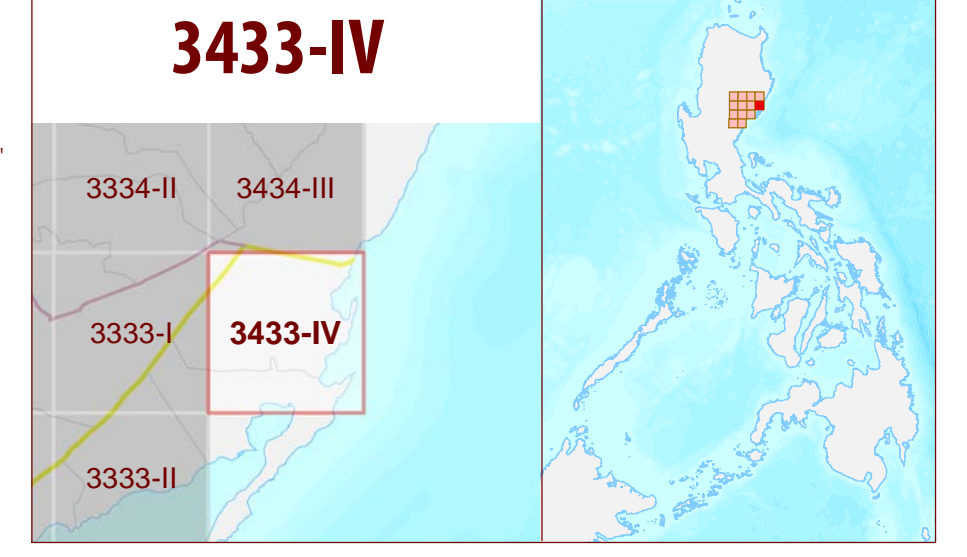
LEGEND

- SUITABILITY CLASSES**
- S1 Highly Suitable** - Land having no significant limitations to sustained application of a given use, or only minor limitations that will not significantly reduce productivity or benefits and will not raise inputs above an acceptable level.
 - S2 Moderately Suitable** - Land having limitations which in aggregate are moderately severe for sustained application of a given use; the limitations will reduce productivity or benefits and increase required inputs to the extent that the overall advantage to be gained from the use, although still attractive, will be appreciably inferior to that expected on class S1 land.
 - S3 Marginally Suitable** - Land having limitations which in aggregate are severe for sustained application of a given use and will so reduce productivity or benefits, or increase required inputs, that this expenditure will be only marginally justified.
- Not Suitable/ Not Relevant**
- OTHER SIGNS**
- NGP Areas
 - Coffee
 - Land limitation
 - Land use

CONVENTIONAL SIGNS

- ROADS**
- Expressway
 - Trunk line
 - Primary
 - Secondary
 - Tertiary
- BOUNDARY**
- Region
 - Province
 - District
 - Municipality
 - Barangay
- HYDROLOGY**
- Sea / Shoreline
 - Lakes / Rivers
- PLACES**
- Capital City / City
 - Capital Town / Town
- LAND USE**
- Built-up
 - Fishpond
 - Mangrove

ADJOINING SHEETS



MISCELLANEOUS INFORMATION

SOURCES OF INFORMATION : Topographic information taken from NAMRIA Topographic Map at 1:50,000 scale. Land resources information from the Agricultural Land Management and Evaluation Division (ALMED), Soils Survey Division (SSD) and Laboratory Services Division (LSD) of BSWM. Rice areas obtained from the Land Use System (FAO, 2015) and Philippine Rice Information System (PRISM) (IRRI, 2015). Data analysis and compilation through the Land Resources Evaluation and Suitability Assessment of Strategic Production Areas for Coffee and Cacao Project implemented by BSWM (2017).

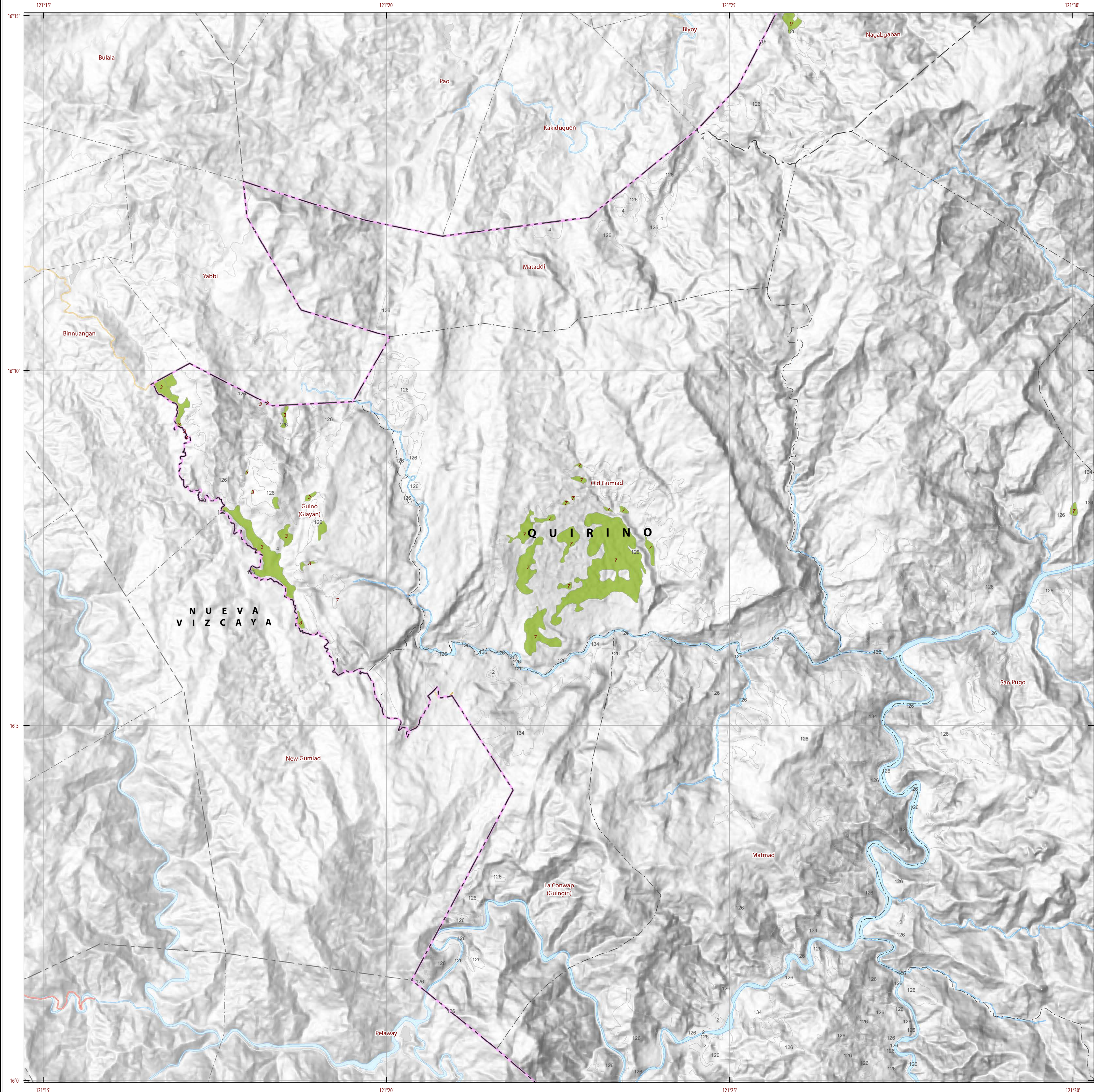
Project Leader : BERNARDO B. PASCUA
GIS and Cartography : IRWIN K. SAMALCA

Funding Agency : Department of Agriculture - Bureau of Agricultural Research (DA-BAR)
Collaborating Agencies : Philippine Council on Agriculture and Fisheries (PCAF)
Department of Agriculture Regional Field Office of CAR, Region II, IV-A, IV-B, VI, VII, VIII, IX, X, XI, XII and CARAGA(XIII)
Local Government Unit (LGU) of covered provinces and municipalities

Map produced by the Geomatics and Soil Information Technology Division, Bureau of Soils and Water Management (BSWM).
Users noting errors or omissions in this publication are requested to inform the Bureau of Soils and Water Management.

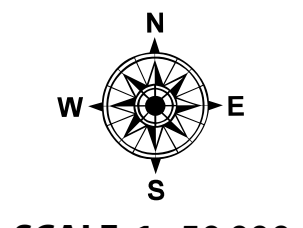
This publication is licensed under a Creative Commons Attribution 4.0 International License. Unless otherwise noted, copyright and any other intellectual property rights, in this publication is owned by the Philippine Government. This publication should be attributed as:
BSWM, 2018. Land Suitability Map Series for Arabica Coffee of the PROVINCE OF QUIRINO (50,000 Scale). CC BY NC SA 4.0.

REPUBLIC OF THE PHILIPPINES
DEPARTMENT OF AGRICULTURE
BUREAU OF SOILS AND WATER MANAGEMENT
SRDC Bldg, Elliptical Road Cor. Visayas Avenue, Diliman, Quezon City 1101
Tel/Fax No.: (+632) 332-9534 E-mail: bswmcenter@yahoo.com



LAND SUITABILITY MAP ARABICA COFFEE

LAND RESOURCES EVALUATION AND SUITABILITY ASSESSMENT OF STRATEGIC PRODUCTION AREAS



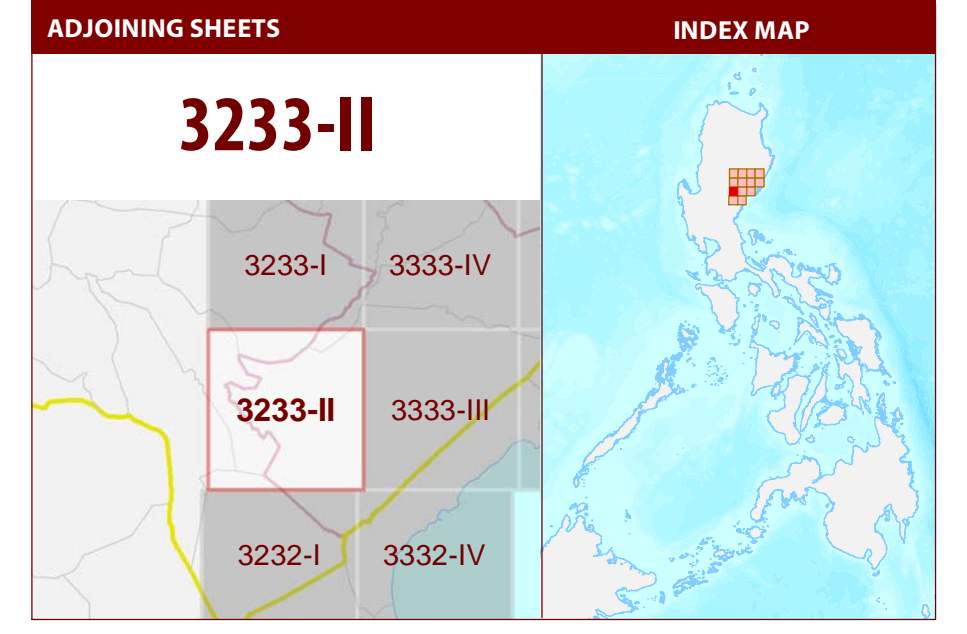
SCALE 1 : 50 000

Universal Transverse Mercator Zone 51 N, PRS 1992 Datum
DISCLAIMER: All political boundaries are not authoritative.

LEGEND

- SUITABILITY CLASSES**
- S1 Highly Suitable** - Land having no significant limitations to sustained application of a given use, or only minor limitations that will not significantly reduce productivity or benefits and will not raise inputs above an acceptable level.
 - S2 Moderately Suitable** - Land having limitations which in aggregate are moderately severe for sustained application of a given use; the limitations will reduce productivity or benefits and increase required inputs to the extent that the overall advantage to be gained from the use, although still attractive, will be appreciably inferior to that expected on class S1 land.
 - S3 Marginally Suitable** - Land having limitations which in aggregate are severe for sustained application of a given use and will so reduce productivity or benefits, or increase required inputs, that this expenditure will be only marginally justified.
- Not Suitable/ Not Relevant**
- OTHER SIGNS**
- NGP Areas
 - Coffee
 - Land limitation
 - Land use

- CONVENTIONAL SIGNS**
- | | | |
|--------------|-----------------|-----------------------|
| ROADS | BOUNDARY | HYDROLOGY |
| Expressway | Region | Sea / Shoreline |
| Trunk line | Province | Lakes / Rivers |
| Primary | District | PLACES |
| Secondary | Municipality | ★ Capital City / City |
| Tertiary | Barangay | ● Capital Town / Town |
- LAND USE**
- Built-up
 - Fishpond
 - Mangrove



MISCELLANEOUS INFORMATION

SOURCES OF INFORMATION: Topographic information taken from NAMRIA Topographic Map at 1:50,000 scale. Land resources information from the Agricultural Land Management and Evaluation Division (ALMED), Soils Survey Division (SSD) and Laboratory Services Division (LSD) of BSWM. Rice areas obtained from the Land Use System (FAO, 2015) and Philippine Rice Information System (PRISM) (IRRI, 2015). Data analysis and compilation through the Land Resources Evaluation and Suitability Assessment of Strategic Production Areas for Coffee and Cacao Project implemented by BSWM (2017).

Project Leader : BERNARDO B. PASALJA
GIS and Cartography : IRWIN K. SAMALCA

Funding Agency : Department of Agriculture - Bureau of Agricultural Research (DA-BAR)
Collaborating Agencies : Philippine Council on Agriculture and Fisheries (PCAF)
Department of Agriculture Regional Field Office of CAR, Region II, IV-A, IV-B, VI, VII, VIII, IX, X, XI, XII and CARAGA(XIII)
Local Government Unit (LGU) of covered provinces and municipalities

Map produced by the Geomatics and Soil Information Technology Division, Bureau of Soils and Water Management (BSWM).
Users noting errors or omissions in this publication are requested to inform the Bureau of Soils and Water Management.

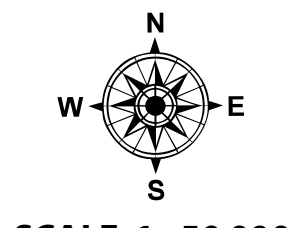
This publication is licensed under a Creative Commons Attribution 4.0 International License. Unless otherwise noted, copyright and any other intellectual property rights, in this publication is owned by the Philippine Government. This publication should be attributed as:
BSWM, 2018. Land Suitability Map Series for Arabica Coffee of the PROVINCE OF QUIRINO (50,000 Scale). CC BY-NC-SA 4.0.

REPUBLIC OF THE PHILIPPINES
DEPARTMENT OF AGRICULTURE
BUREAU OF SOILS AND WATER MANAGEMENT
SRDC Bldg, Elliptical Road Cor. Visayas Avenue, Diliman, Quezon City 1101
Tel/Fax No. : (+632) 332-9534 E-mail: bswmcenter@phdoo.com



LAND SUITABILITY MAP ARABICA COFFEE

LAND RESOURCES EVALUATION AND SUITABILITY ASSESSMENT OF STRATEGIC PRODUCTION AREAS



SCALE 1 : 50 000

0 0.5 1 2 3 4 5
Kilometers

0 0.5 1 2 3
Miles

Universal Transverse Mercator Zone 51 N, PRS 1992 Datum
DISCLAIMER: All political boundaries are not authoritative.

LEGEND

SUITABILITY CLASSES

- S1 Highly Suitable** - Land having no significant limitations to sustained application of a given use, or only minor limitations that will not significantly reduce productivity or benefits and will not raise inputs above an acceptable level.
- S2 Moderately Suitable** - Land having limitations which in aggregate are moderately severe for sustained application of a given use; the limitations will reduce productivity or benefits and increase required inputs to the extent that the overall advantage to be gained from the use, although still attractive, will be appreciably inferior to that expected on class S1 land.
- S3 Marginally Suitable** - Land having limitations which in aggregate are severe for sustained application of a given use and will so reduce productivity or benefits, or increase required inputs, that this expenditure will be only marginally justified.

Not Suitable/ Not Relevant

OTHER SIGNS

- NGP Areas
- Coffee
- Land limitation
- Land use

CONVENTIONAL SIGNS

ROADS	BOUNDARY	HYDROLOGY
Expressway	Region	Sea / Shoreline
Trunk line	Province	Lakes / Rivers
Primary	District	PLACES
Secondary	Municipality	★ Capital City / City
Tertiary	Barangay	● Capital Town / Town

LAND USE

- Built-up
- Fishpond
- Mangrove

ADJOINING SHEETS

INDEX MAP

3333-III

3233-I 3333-IV 3333-I

3233-II 3333-III 3333-II

3232-I 3332-IV

MISCELLANEOUS INFORMATION

SOURCES OF INFORMATION: Topographic information taken from NAMRIA Topographic Map at 1:50,000 scale. Land resources information from the Agricultural Land Management and Evaluation Division (ALMED), Soils Survey Division (SSD) and Laboratory Services Division (LSD) of BSWM. Rice areas obtained from the Land Use System (FAO, 2015) and Philippine Rice Information System (PRISM) (IRRI, 2015). Data analysis and compilation through the Land Resources Evaluation and Suitability Assessment of Strategic Production Areas for Coffee and Cacao Project implemented by BSWM (2017).

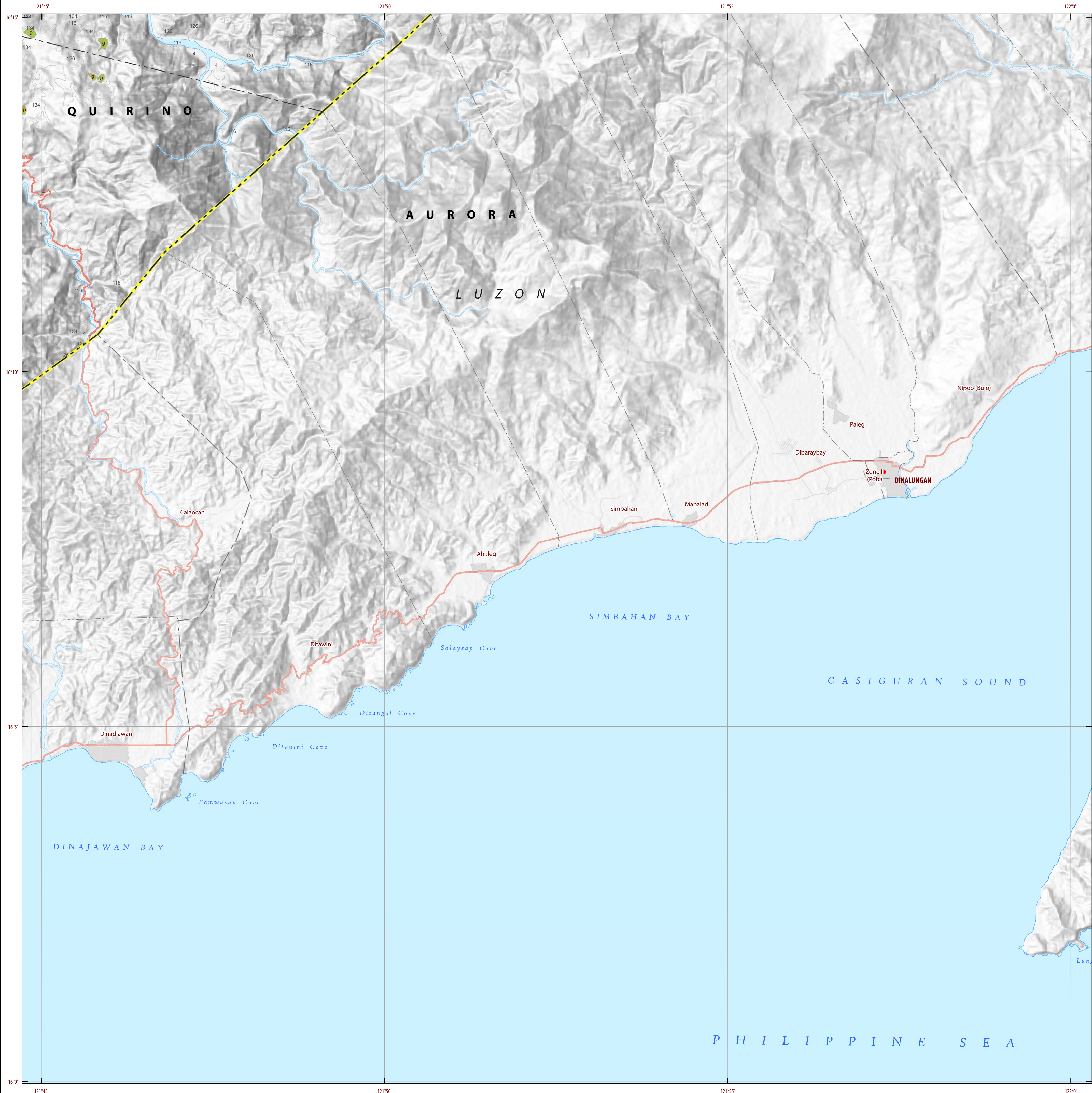
Project Leader : BERNARDO B. PASCUA
GIS and Cartography : IRWIN K. SAMALCA

Funding Agency : Department of Agriculture - Bureau of Agricultural Research (DA-BAR)
Collaborating Agencies : Philippine Council on Agriculture and Fisheries (PCAF)
: Department of Agriculture Regional Field Office of CAR, Region II, IV-A, IV-B, VI, VII, VIII, IX, X, XI, XII and CARAGA(XIII)
: Local Government Unit (LGU) of covered provinces and municipalities

Map produced by the Geomatics and Soil Information Technology Division, Bureau of Soils and Water Management (BSWM).
Users noting errors or omissions in this publication are requested to inform the Bureau of Soils and Water Management.

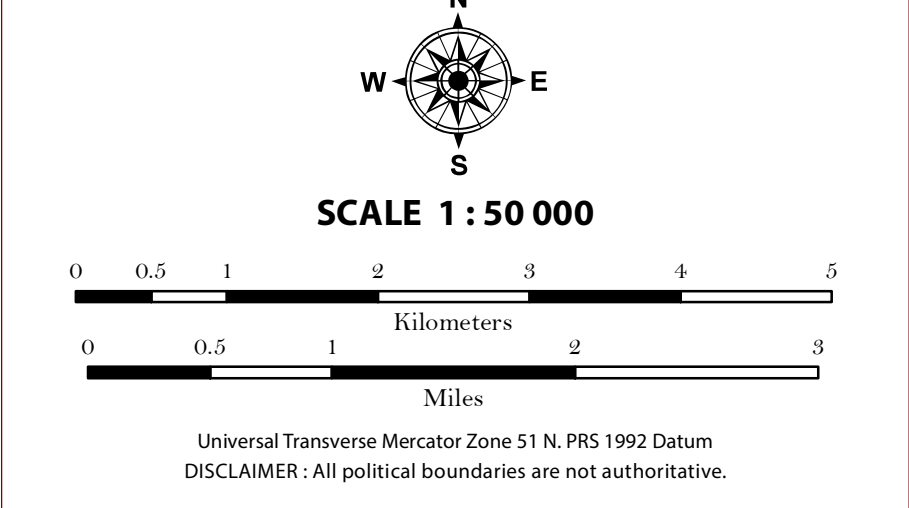
This publication is licensed under a Creative Commons Attribution 4.0 International License. Unless otherwise noted, copyright and any other intellectual property rights, in this publication is owned by the Philippine Government. This publication should be attributed as:
BSWM, 2018. Land Suitability Map Series for Arabica Coffee of the PROVINCE OF QUIRINO (50,000 Scale). CC BY NC SA 4.0.

REPUBLIC OF THE PHILIPPINES
DEPARTMENT OF AGRICULTURE
BUREAU OF SOILS AND WATER MANAGEMENT
SRDC Bldg, Elliptical Road Cor. Visayas Avenue, Diliman, Quezon City 1101
Tel/Fax No. : (+632) 332-9534 E-mail: bswmcenter@yahoo.com



LAND SUITABILITY MAP ARABICA COFFEE

LAND RESOURCES EVALUATION AND SUITABILITY ASSESSMENT OF STRATEGIC PRODUCTION AREAS



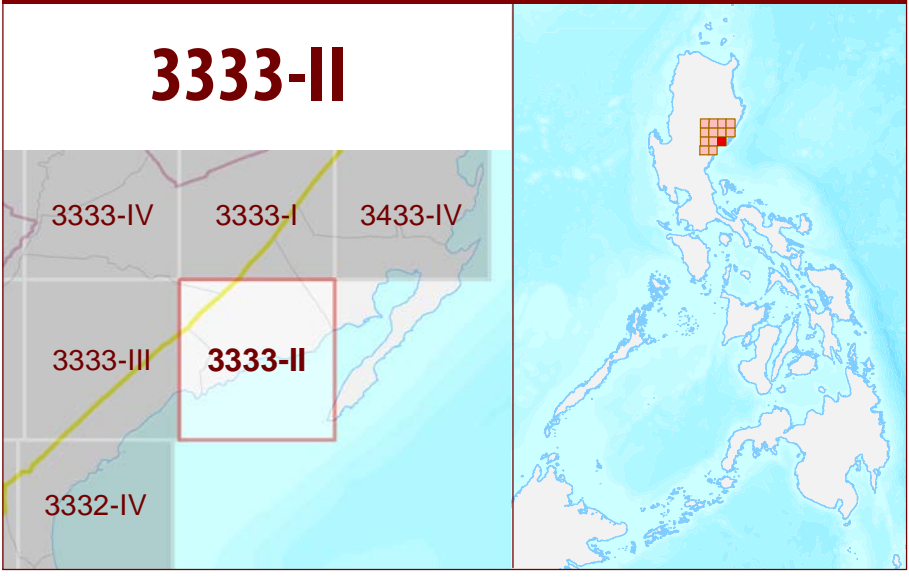
LEGEND

- SUITABILITY CLASSES**
- S1 Highly Suitable** - Land having no significant limitations to sustained application of a given use, or only minor limitations that will not significantly reduce productivity or benefits and will not raise inputs above an acceptable level.
 - S2 Moderately Suitable** - Land having limitations which in aggregate are moderately severe for sustained application of a given use; the limitations will reduce productivity or benefits and increase required inputs to the extent that the overall advantage to be gained from the use, although still attractive, will be appreciably inferior to that expected on class S1 land.
 - S3 Marginally Suitable** - Land having limitations which in aggregate are severe for sustained application of a given use and will so reduce productivity or benefits, or increase required inputs, that this expenditure will be only marginally justified.
- Not Suitable/ Not Relevant**
- OTHER SIGNS**
- NGP Areas
 - Coffee
 - Land limitation
 - Land use

CONVENTIONAL SIGNS

- | | | |
|-----------------|-----------------|---------------------|
| ROADS | BOUNDARY | HYDROLOGY |
| Expressway | Region | Sea / Shoreline |
| Trunk line | Province | Lakes / Rivers |
| Primary | District | PLACES |
| Secondary | Municipality | Capital City / City |
| Tertiary | Barangay | Capital Town / Town |
| LAND USE | | |
| Built-up | Fishpond | Mangrove |

ADJOINING SHEETS



MISCELLANEOUS INFORMATION

SOURCES OF INFORMATION: Topographic information taken from NAMRIA Topographic Map at 1:50,000 scale. Land resources information from the Agricultural Land Management and Evaluation Division (ALMED), Soils Survey Division (SSD) and Laboratory Services Division (LSD) of BSWM. Rice areas obtained from the Land Use System (FAO, 2015) and Philippine Rice Information System (PRISM) (IRRI, 2015). Data analysis and compilation through the Land Resources Evaluation and Suitability Assessment of Strategic Production Areas for Coffee and Cacao Project implemented by BSWM (2017).

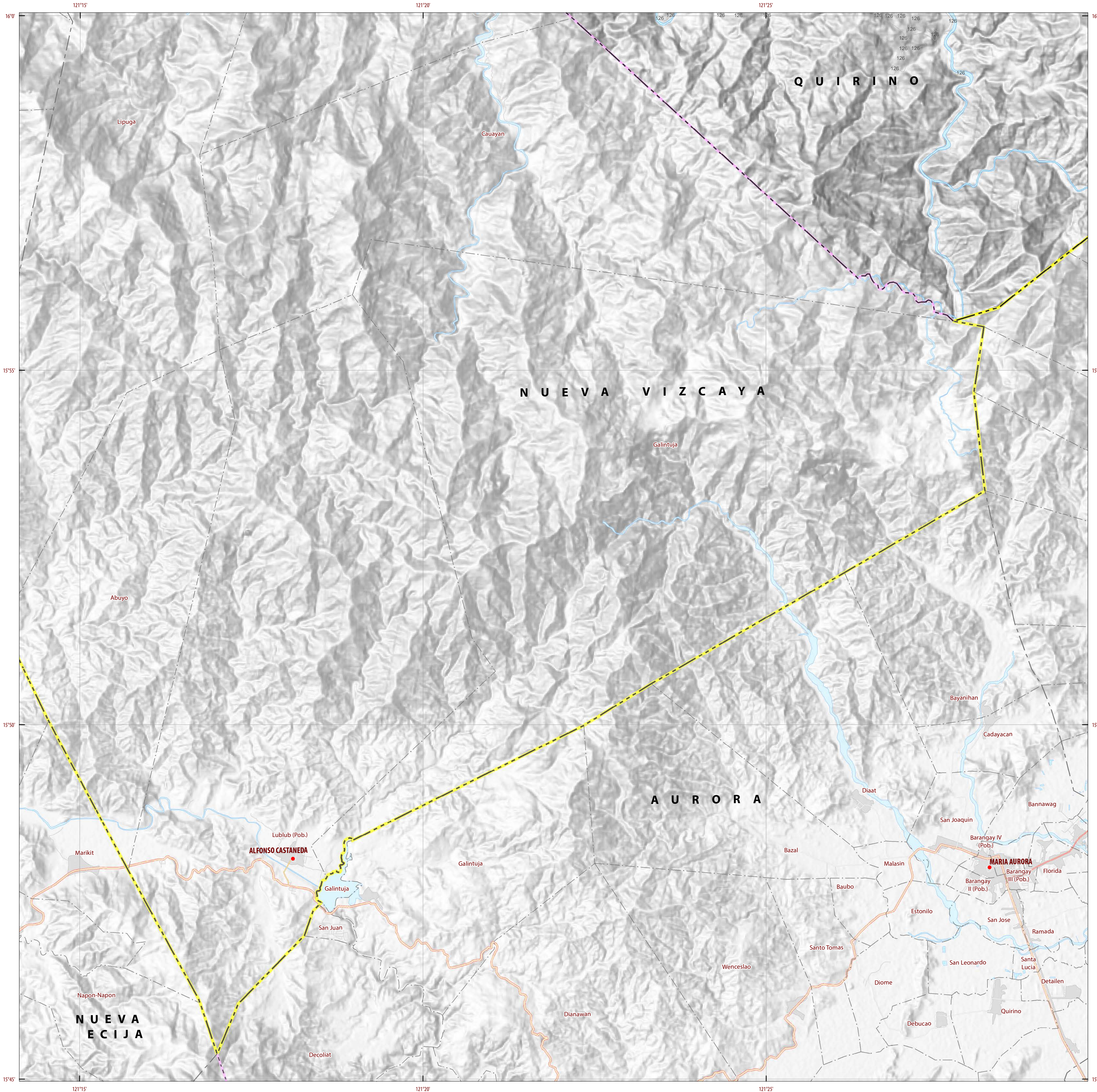
Project Leader : BERNARDO B. PASCUA
 GIS and Cartography : IRWIN K. SAMALCA

Funding Agency : Department of Agriculture - Bureau of Agricultural Research (DA-BAR)
 Collaborating Agencies : Philippine Council on Agriculture and Fisheries (PCAF)
 : Department of Agriculture Regional Field Office of CAR, Region II, IV-A, IV-B, VI, VII, VIII, IX, X, XI, XII and CARAGA(XIII)
 : Local Government Unit (LGU) of covered provinces and municipalities

Map produced by the Geomatics and Soil Information Technology Division, Bureau of Soils and Water Management (BSWM).
 Users noting errors or omissions in this publication are requested to inform the Bureau of Soils and Water Management.

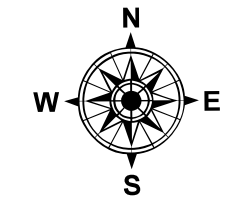
This publication is licensed under a Creative Commons Attribution 4.0 International License. Unless otherwise noted, copyright and any other intellectual property rights, in this publication is owned by the Philippine Government. This publication should be attributed as:
 BSWM, 2018. Land Suitability Map Series for Arabica Coffee of the PROVINCE OF QUIRINO (50,000 Scale). CC BY-NC-SA 4.0.

REPUBLIC OF THE PHILIPPINES
 DEPARTMENT OF AGRICULTURE
 BUREAU OF SOILS AND WATER MANAGEMENT
 SRDC Bldg, Elliptical Road Cor. Visayas Avenue, Diliman, Quezon City 1101
 Tel/Fax No.: (+632) 332-9534 E-mail: bswmcenter@yahoo.com

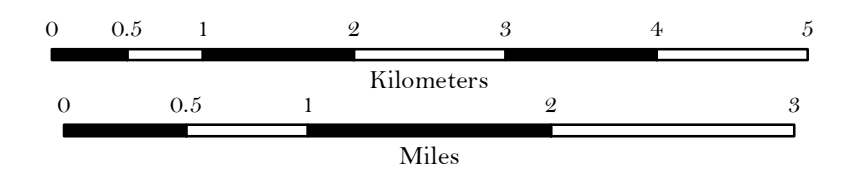


LAND SUITABILITY MAP ARABICA COFFEE

LAND RESOURCES EVALUATION AND SUITABILITY ASSESSMENT OF STRATEGIC PRODUCTION AREAS



SCALE 1 : 50 000



Universal Transverse Mercator Zone 51 N, PRS 1992 Datum
DISCLAIMER: All political boundaries are not authoritative.

LEGEND

SUITABILITY CLASSES

- S1 Highly Suitable** - Land having no significant limitations to sustained application of a given use, or only minor limitations that will not significantly reduce productivity or benefits and will not raise inputs above an acceptable level.
- S2 Moderately Suitable** - Land having limitations which in aggregate are moderately severe for sustained application of a given use; the limitations will reduce productivity or benefits and increase required inputs to the extent that the overall advantage to be gained from the use, although still attractive, will be appreciably inferior to that expected on class S1 land.
- S3 Marginally Suitable** - Land having limitations which in aggregate are severe for sustained application of a given use and will so reduce productivity or benefits, or increase required inputs, that this expenditure will be only marginally justified.

Not Suitable/ Not Relevant

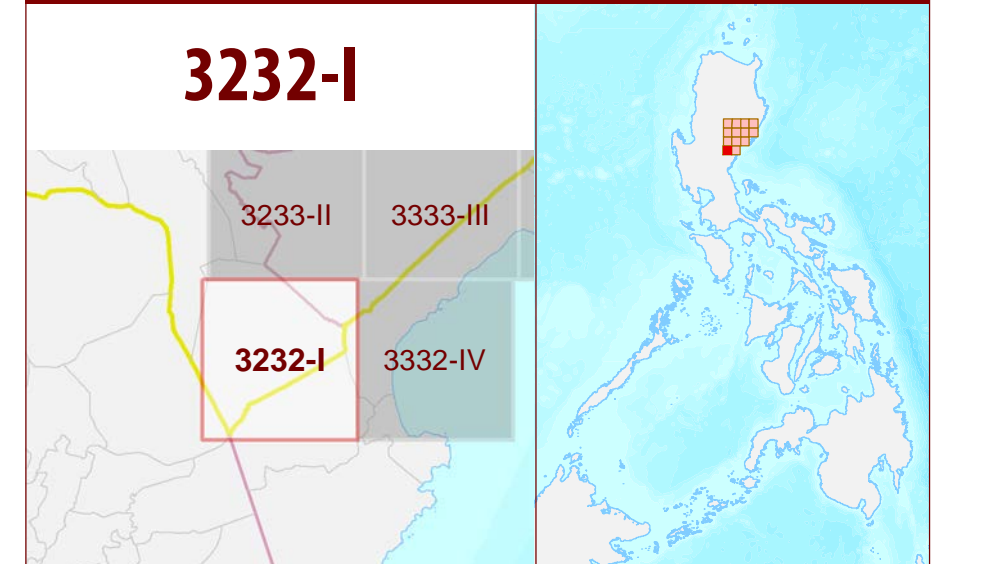
OTHER SIGNS

- NGP Areas
- Coffee
- Land limitation
- Land use

CONVENTIONAL SIGNS

- | | | |
|-----------------|-----------------|-----------------------|
| ROADS | BOUNDARY | HYDROLOGY |
| Expressway | Region | Sea / Shoreline |
| Trunk line | Province | Lakes / Rivers |
| Primary | District | PLACES |
| Secondary | Municipality | ★ Capital City / City |
| Tertiary | Barangay | ● Capital Town / Town |
| LAND USE | | |
| Built-up | Fishpond | Mangrove |

ADJOINING SHEETS



MISCELLANEOUS INFORMATION

SOURCES OF INFORMATION: Topographic information taken from NAMRIA Topographic Map at 1:50,000 scale. Land resources information from the Agricultural Land Management and Evaluation Division (ALMED), Soil Survey Division (SSD) and Laboratory Services Division (LSD) of BSWM. Rice areas obtained from the Land Use System (FAO, 2015) and Philippine Rice Information System (PRISM) (IRRI, 2015). Data analysis and compilation through the Land Resources Evaluation and Suitability Assessment of Strategic Production Areas for Coffee and Cocoa Project implemented by BSWM (2017).

Project Leader : BERNARDO B. PASCUA
GIS and Cartography : IRWIN K. SAMALCA

Funding Agency : Department of Agriculture - Bureau of Agricultural Research (DA-BAR)
Collaborating Agencies : Philippine Council on Agriculture and Fisheries (PCAF)
: Department of Agriculture Regional Field Office of CAR, Region II, IV-A, IV-B, VI, VII, VIII, IX, X, XI, XII and CARAGA(XIII)
: Local Government Unit (LGU) of covered provinces and municipalities

Map produced by the Geomatics and Soil Information Technology Division, Bureau of Soils and Water Management (BSWM). Users noting errors or omissions in this publication are requested to inform the Bureau of Soils and Water Management.

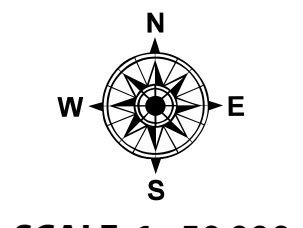
This publication is licensed under a Creative Commons Attribution 4.0 International License. Unless otherwise noted, copyright and any other intellectual property rights, in this publication is owned by the Philippine Government. This publication should be attributed as:
BSWM, 2018. Land Suitability Map Series for Arabica Coffee of the PROVINCE OF QUIRINO (50,000 Scale). CC BY-NC-SA 4.0.

REPUBLIC OF THE PHILIPPINES
DEPARTMENT OF AGRICULTURE
BUREAU OF SOILS AND WATER MANAGEMENT
SRDC Bldg, Elliptical Road Cor. Visayas Avenue, Diliman, Quezon City 1101
Tel/Fax No.: (+632) 332-9534 E-mail: bswmcenter@yahoo.com

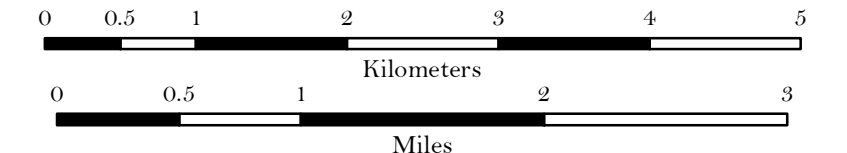


LAND SUITABILITY MAP ARABICA COFFEE

LAND RESOURCES EVALUATION AND SUITABILITY ASSESSMENT OF STRATEGIC PRODUCTION AREAS



SCALE 1 : 50 000



Universal Transverse Mercator Zone 51 N, PRS 1992 Datum
DISCLAIMER: All political boundaries are not authoritative.

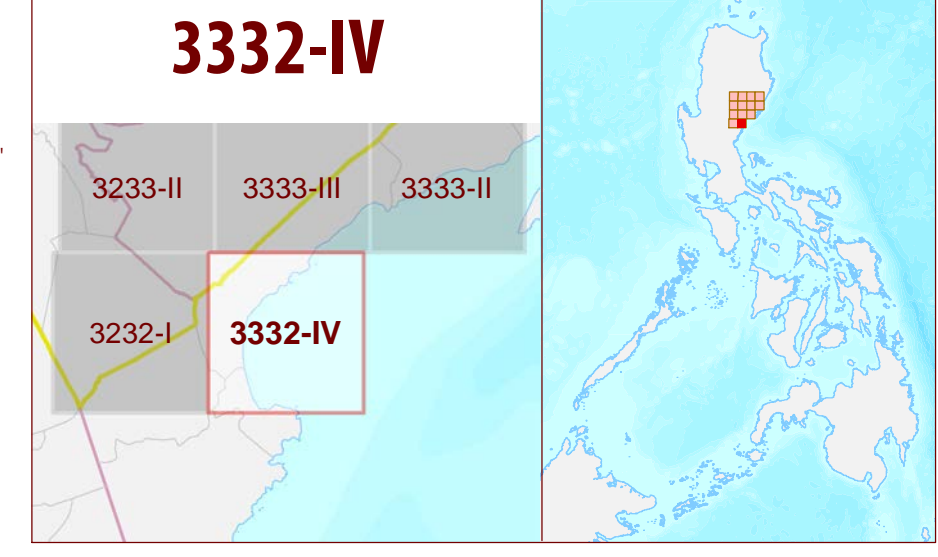
LEGEND

- SUITABILITY CLASSES**
- S1 Highly Suitable** - Land having no significant limitations to sustained application of a given use, or only minor limitations that will not significantly reduce productivity or benefits and will not raise inputs above an acceptable level.
 - S2 Moderately Suitable** - Land having limitations which in aggregate are moderately severe for sustained application of a given use; the limitations will reduce productivity or benefits and increase required inputs to the extent that the overall advantage to be gained from the use, although still attractive, will be appreciably inferior to that expected on class S1 land.
 - S3 Marginally Suitable** - Land having limitations which in aggregate are severe for sustained application of a given use and will so reduce productivity or benefits, or increase required inputs, that this expenditure will be only marginally justified.
- Not Suitable/ Not Relevant**
- OTHER SIGNS**
- NGP Areas
 - Coffee
 - Land limitation
 - Land use

CONVENTIONAL SIGNS

- ROADS**
- Expressway
 - Trunk line
 - Primary
 - Secondary
 - Tertiary
- BOUNDARY**
- Region
 - Province
 - District
 - Municipality
 - Barangay
- HYDROLOGY**
- Sea / Shoreline
 - Lakes / Rivers
- PLACES**
- Capital City / City
 - Capital Town / Town
- LAND USE**
- Built-up
 - Fishpond
 - Mangrove

ADJOINING SHEETS



MISCELLANEOUS INFORMATION

SOURCES OF INFORMATION : Topographic information taken from NAMRIA Topographic Map at 1:50,000 scale. Land resources information from the Agricultural Land Management and Evaluation Division (ALMED), Soils Survey Division (SSD) and Laboratory Services Division (LSD) of BSWM. Rice areas obtained from the Land Use System (FAO, 2015) and Philippine Rice Information System (PRISM) (IRRI, 2015). Data analysis and compilation through the Land Resources Evaluation and Suitability Assessment of Strategic Production Areas for Coffee and Cacao Project implemented by BSWM (2017).

Project Leader : BERNARDO B. PASCUA
GIS and Cartography : IRWIN K. SAMALCA

Funding Agency : Department of Agriculture - Bureau of Agricultural Research (DA-BAR)
Collaborating Agencies : Philippine Council on Agriculture and Fisheries (PCAF)
: Department of Agriculture Regional Field Office of CAR, Region II, IV-A, IV-B, VI, VII, VIII, IX, X, XI, XII and CARAGA(XIII)
: Local Government Unit (LGU) of covered provinces and municipalities

Map produced by the Geomatics and Soil Information Technology Division, Bureau of Soils and Water Management (BSWM).
Users noting errors or omissions in this publication are requested to inform the Bureau of Soils and Water Management.

This publication is licensed under a Creative Commons Attribution 4.0 International License. Unless otherwise noted, copyright and any other intellectual property rights, in this publication is owned by the Philippine Government. This publication should be attributed as:
BSWM, 2018. Land Suitability Map Series for Arabica Coffee of the PROVINCE OF QUIRINO (50,000 Scale). CC BY-NC-SA 4.0.

REPUBLIC OF THE PHILIPPINES
DEPARTMENT OF AGRICULTURE
BUREAU OF SOILS AND WATER MANAGEMENT
SRDC Bldg., Elliptical Road Cor. Visayas Avenue, Diliman, Quezon City 1101
Tel/Fax No.: (+632) 332-9534 E-mail: bswmcenter@phdoo.com