

LAND SUITABILITY MAP

NATURAL RUBBER

LAND RESOURCES EVALUATION AND SUITABILITY
ASSESSMENT OF STRATEGIC PRODUCTION AREAS

PROVINCE OF SULTAN KUDARAT



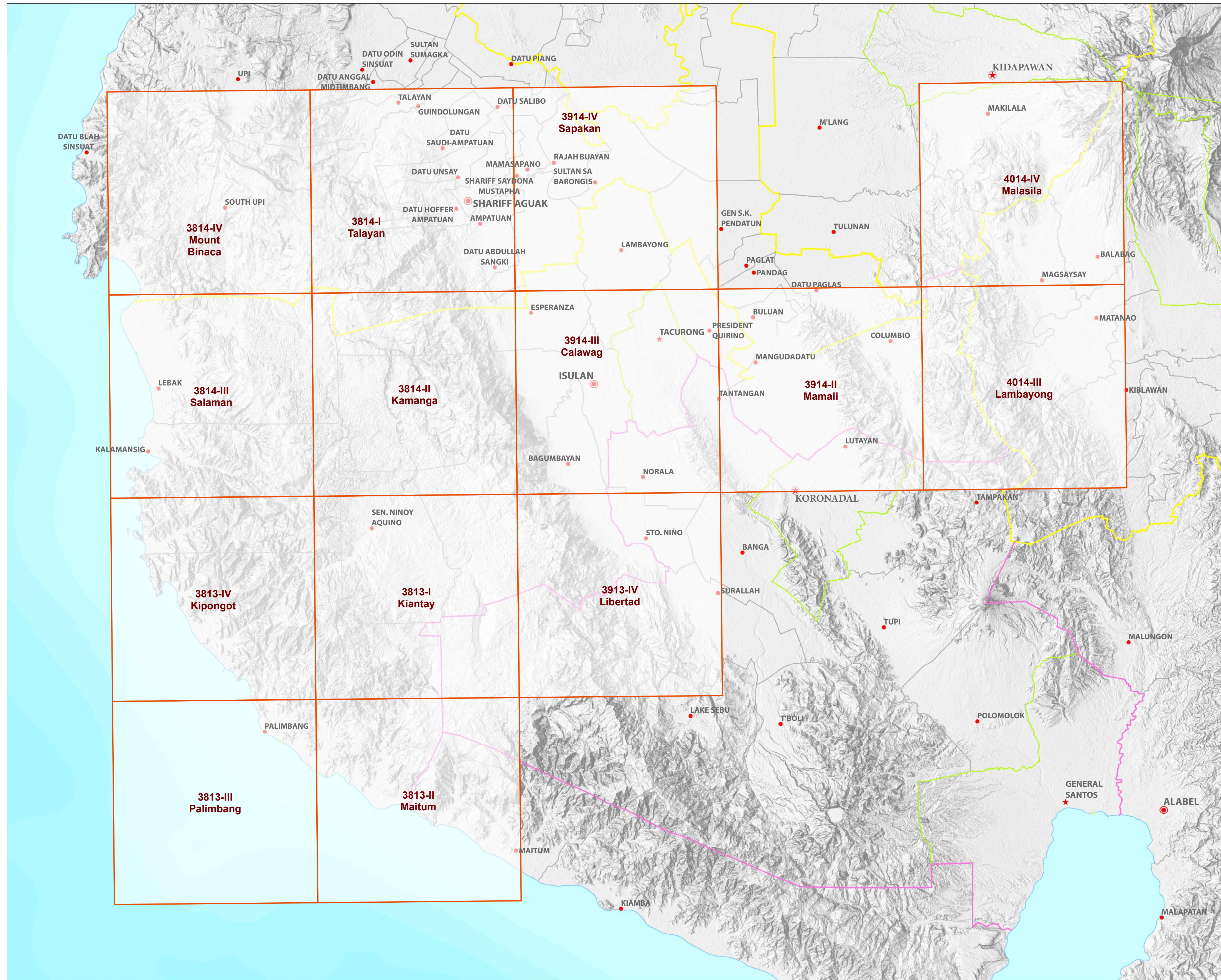
REPUBLIC OF THE PHILIPPINES
DEPARTMENT OF AGRICULTURE
BUREAU OF SOILS AND WATER MANAGEMENT

SRDC Bldg., Elliptical Road Cor. Visayas Avenue, Diliman, Quezon City 1101
Tel/Fax No.: (+632) 332-9534 E-mail: bswmclientcenter@yahoo.com

MAP INDEX

LAND RESOURCES EVALUATION AND SUITABILITY ASSESSMENT OF STRATEGIC PRODUCTION AREAS

PROVINCE OF SULTAN KUDARAT



LEGEND

Places

- ★ Capital City
- ★ City
- Capital Town
- Town

Administrative Boundary

- Regional
- Provincial
- City
- Municipal

Map Index

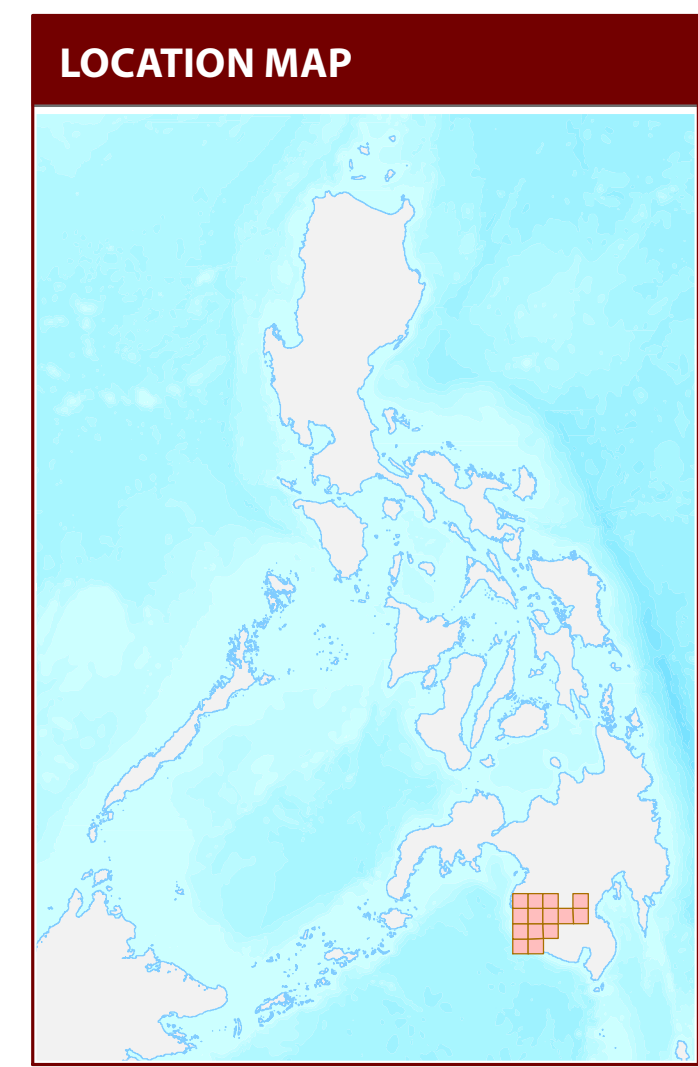
- Index grid

Topographic Relief

- Topographic relief symbol

Bathymetry

- Bathymetry symbol



MISCELLANEOUS INFORMATION

Land suitability information produced by the Bureau of Soils and Water Management (BSWM) through the Land Resources Evaluation and Suitability Assessment of Strategic Production Areas for Major Commodities Project duly supported by the Philippine Council on Agriculture and Fisheries (PCAF) and funded by the Bureau of Agricultural Research (BAR).

Map produced by the Geomatics and Soil Information Technology Division, Bureau of Soils and Water Management (BSWM).

Users noting errors or omissions in this publication are requested to inform the Bureau of Soils and Water Management.

Unless otherwise noted, copyright and any other intellectual property rights is owned by the Philippine Government.

REPUBLIC OF THE PHILIPPINES
DEPARTMENT OF AGRICULTURE
BUREAU OF SOILS AND WATER MANAGEMENT

SRDC Bldg., Elliptical Road Cor. Visayas Avenue,
 Diliman, Quezon City 1101 Philippines
 Tel/Fax No. : (432) 332-9534 E-mail: bswmclientcenter@yahoo.com

LAND SUITABILITY MAP FOR RUBBER

LAND RESOURCES EVALUATION AND SUITABILITY ASSESSMENT OF STRATEGIC PRODUCTION AREAS SULTAN KUDARAT, REGION XII

EXTENT OF SUITABILITY FOR RUBBER PRODUCTION BY MUNICIPALITY

MUNICIPALITY	EXISTING RUBBER (Ha)			TOTAL EXISTING AREA (Ha)	EXPANSION AREA (Ha)						CONFLICT AREA (Ha)						TOTAL POTENTIAL EXPANSION AREA (Ha)		
	S1	S2	S3		Coconut		Shrubland, unmanaged*		Grassland, unmanaged*		Corn		Oil palm		Banana			Other crops	
					S1	S2	S1	S2	S1	S2	S1	S2	S1	S2	S1	S2		S1	S2
BAGUMBAYAN	-	-	-	-	1,680	1,369	9	49	20	5,624	3,104	11,411	77	31	-	-	-	-	23,374
CITY OF TACURONG	-	-	-	-	154	9	4	-	1,478	1,485	3,137	37	1,809	-	9	-	-	8,122	
COLUMBIO	-	-	-	-	32	9	-	22	1,139	3,410	1,767	175	-	-	-	-	-	6,555	
ESPERANZA	-	-	-	-	573	723	-	31	4	121	3,280	2,178	-	-	-	-	-	6,910	
ISULAN	-	-	-	-	430	310	-	207	-	1,317	4,324	1,994	1,556	146	-	-	-	10,285	
KALAMANSIG	-	-	-	-	1,920	595	28	353	-	173	73	4	-	-	-	-	-	3,147	
LAMBAYONG	-	-	-	-	152	-	-	-	-	4,243	29	-	-	-	-	-	-	4,425	
LEBAK	-	-	-	-	3,594	2,898	1	195	101	156	411	2,368	-	-	1	-	-	9,723	
LUTAYAN	-	-	-	-	848	72	318	12	115	523	3,793	65	-	-	-	-	-	5,746	
PALMBANG	-	-	-	-	5,552	1,908	-	753	-	1,447	1,219	1,726	-	-	-	-	-	12,606	
PRESIDENT QUIRINO	-	-	-	-	1,271	7	-	-	-	3,587	4	-	-	-	-	-	-	4,868	
SEN. NINOY AQUINO	-	-	-	-	-	-	-	-	-	3,208	-	12,607	-	-	-	-	-	15,815	
TOTAL	-	-	-	-	16,206	7,899	360	1,623	2,857	17,465	28,938	32,598	3,442	177	10	-	-	111,575	

Note: Delivery of rubber planting materials must be started on the onset of rainy season.
*establishment of shade trees prior to planting of rubber.

SUITABILITY CLASSES:

Highly Suitable (S1)
Land having no significant limitation to sustained application of a given use, or only minor limitations that will not significantly reduce productivity or benefits and will not raise inputs above an acceptable level.

Marginally Suitable (S3)
Land having limitations which in aggregate are severe for sustained application of a given use and will so reduce productivity or benefits, or increase required inputs, that this expenditure will be only marginally justified.

Moderately Suitable (S2)
Land having limitation which in aggregate are moderately severe for sustained application of a given use; the limitation will reduce productivity or benefits and increase required inputs to the extent that the overall advantage to be gained from the use, although still attractive, will be appreciably inferior to that expected on class S1 land.

Not Suitable / Not Relevant
Land having limitations which may be surmountable in time but which cannot be corrected with existing knowledge at currently acceptable cost; the limitations are so severe as to preclude successful sustained use of the land in the given manner. Existing forest, shrubland greater than 18% slope, irrigated paddy rice and miscellaneous land types such as built up areas, roads, etc are considered as not relevant.

AGRONOMIC REQUIREMENT OF RUBBER PRODUCTION

LAND UTILIZATION TYPE	SUITABILITY RATING	SLOPE (%)	SOIL DEPTH (cm)	SOIL TEXTURE	SOIL DRAINAGE	SOIL REACTION (pH)	INHERENT FERTILITY	FLOODING CLASS	EROSION CLASS	ROCK OUTCROPS	ELEVATION (masl)	ANNUAL RAINFALL (mm)	CLIMATIC TYPE
Rubber Tree	S1	<8	>100	CL, SiCL, SCL, SC, SIC, C, HC	WD, MWD, SPD	5.6 - 7.2	high	none-slight	none-slight	none-few	<500	1000-2000	III, IV
	S2	8 - 30	30 - 100	FSL, L, SiL, SL	PD, VPD	4.5 - 5.5 7.3 - 7.8	medium	moderate	moderate	common	500-1000	2001-4500	I, II, III
	S3	>30	<30	S, LS, CSL	ED	<4.5 - > 7.9	low	severe	severe	many	>1000	<1000 >4500	

SLOPE (%)	SOIL DRAINAGE	SOIL REACTION (pH)	SOIL TEXTURE
0 - 3 - level to gently sloping	ED - excessively drained	< 4.5 - extremely acid	Coarse
3 - 8 - gently sloping to undulating	WD - well drained	4.5 - 5.0 - very strongly acid	S - sand
8 - 18 - undulating to rolling	MWD - moderately well drained	5.1 - 5.5 - strongly acid	LS - loamy sand
18 - 30 - rolling to moderately steep	SPD - somewhat poorly drained	5.6 - 6.0 - medium acid	CSL - coarse sandy loam
30 - 50 - steep	PD - poorly drained	6.1 - 6.5 - slightly acid	SL - sandy loam
> 50 - very steep	VPD - very poorly drained	6.6 - 7.2 - neutral	Medium
		7.3 - 7.8 - mildly alkaline	FSL - fine sandy loam
		7.9 - 8.4 - moderately alkaline	L - loam
		> 8.5 - strongly alkaline	SIL - silt loam
			CL - clay loam
			SiCL - silty clay loam
			SCL - sandy clay loam
SOIL DEPTH (cm)	SURFACE IMPEDIMENT		Fine
0 - 30 - very shallow	ROCK OUTCROPS		SC - sandy clay
30 - 50 - shallow	< 10% - none - few		SiC - silty clay
50 - 100 - moderately deep	10 - 30% - common		C - clay
> 100 - deep to very deep	> 30% - many		HC - heavy clay

LAND LIMITATIONS DESCRIPTION AND COMBINATIONS

ELEVATION	SOIL DRAINAGE	SOIL DEPTH	SOIL EROSION
EI2 - 500 - 1000m or 2000 - 2500m	D2 - Somewhat poorly drained to poorly drained	Sh2 - Shallow to moderately deep (30 - 100cm)	E2 - Moderate erosion
EI3 - < 500m or > 2500m	D3 - Very poorly drained or excessively drained	Sh3 - Very shallow (< 30cm)	E3 - Severe erosion
SLOPE/TOPOGRAPHY	SOIL TEXTURE	ROCK OUTCROPS	FLOODING
T2 - Undulating to moderately steep	Tc - Coarse texture	Rc2 - Common	F2 - Moderate seasonal flooding
T3 - Steep to very steep		Rc3 - Many	F3 - Severe seasonal flooding

CODE	LIMITATION	CODE	LIMITATION	CODE	LIMITATION	CODE	LIMITATION	CODE	LIMITATION	CODE	LIMITATION	CODE	LANDUSE
1	EI2	11	T2-E3-Rc2	21	T2-EI2-Sh2-Rc3	31	T3-E3	41	T3-EI3-E3-Sh3-Rc2	51	T3-EI2-E3-Sh3-Rc3	4	Corn
2	EI2-E2-Sh2-Rc3	12	T2-E3-Sh2-Rc2	22	T2-EI3	32	T3-E3-Rc2	42	T3-EI3-E3-Sh3-Rc3	52	T3-EI3-E3	81	Coffee
3	EI2-Sh2-Rc2	13	T2-E3-Sh2-Rc3	23	T2-EI3-E3	33	T3-E3-Sh3-Rc2	43	T3-F3-D2	53	T3-EI3-E3-Sh3-Rc3	82	Cacao
4	F2-D2	14	T2-EI2	24	T2-EI3-E3-Sh2-Rc2	34	T3-E3-Sh3-Rc3	44	T3	54	T3-EI3	91	Banana
5	F3-D2	15	T2-EI2-E3	25	T2-EI3-E3-Sh2-Rc3	35	T3-EI2	45	T3-E3	55	Tc	116	Coconut
6	Sh2	16	T2-EI2-E3-Rc2	26	T2-EI3-Sh2-Rc2	36	T3-EI2-E3	46	T3-E3-Rc3			119	Oil palm
7	Sh2-Rc2	17	T2-EI2-E3-Sh2-Rc2	27	T2-F2-D2	37	T3-EI2-E3-Rc2	47	T3-E3-Sh3-Rc3			126	Grassland
8	T2	18	T2-EI2-E3-Sh2-Rc3	28	T2-F3-D2	38	T3-EI2-E3-Sh3-Rc2	48	T3-EI2			134	Shrubs, unmanaged
9	T2-E2-Sh2-Rc2	19	T2-EI2-Rc2	29	T2-Sh2-Rc2	39	T3-EI2-E3-Sh3-Rc3	49	T3-EI2-E3				
10	T2-E3	20	T2-EI2-Sh2-Rc2	30	T3	40	T3-EI3-E3	50	T3-EI2-E3-Rc3				

CLIMATE TYPE

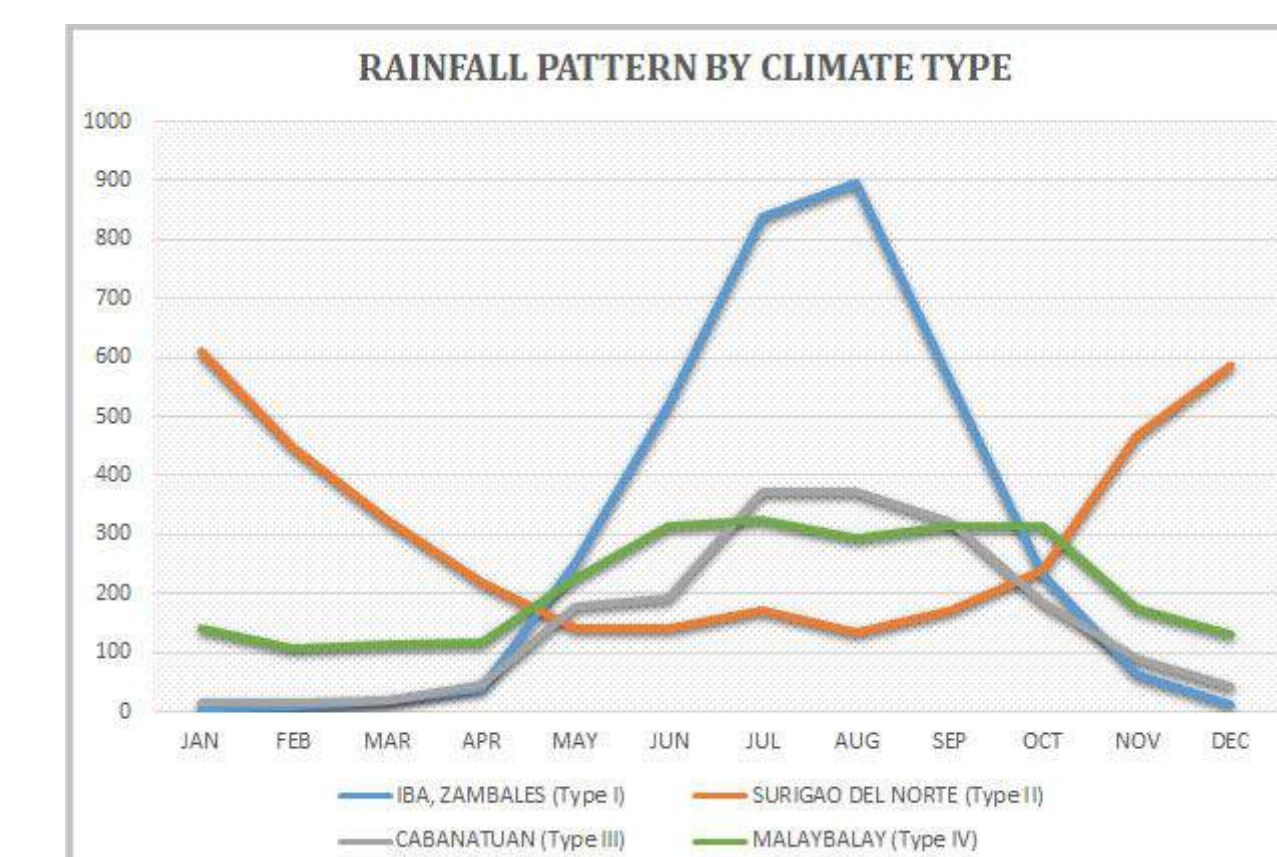
TYPE I : Two pronounced season, dry from November to April and wet during the rest of the year. Maximum rain period is from June to September

TYPE II : No dry season with a very pronounced maximum rain period from December to February. There is not a single dry month. Maximum monthly rainfall occurs during the period from March to May.

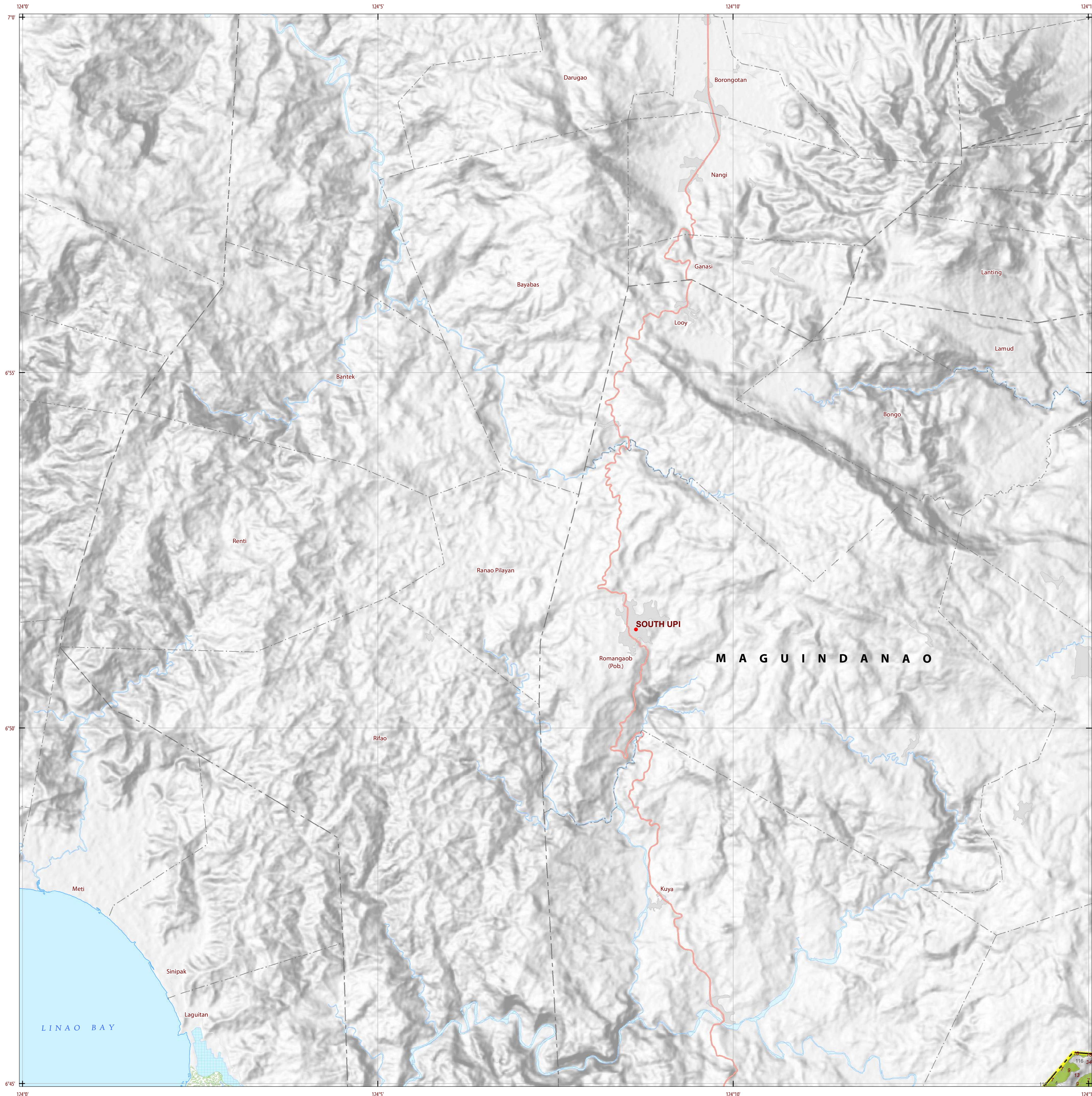
TYPE III : No very pronounced maximum rain period, with a dry season lasting only from one to three months, either during the period from December to February or from March to May. This type resembles Type I since it has a short dry season.

TYPE IV : Rainfall is more or less evenly distributed throughout the year. This type resembles Type II since it has no dry season.

The Eastern part of Sultan Kudarat is classified as climatic Type III and the Southern part lies to climatic Type IV.

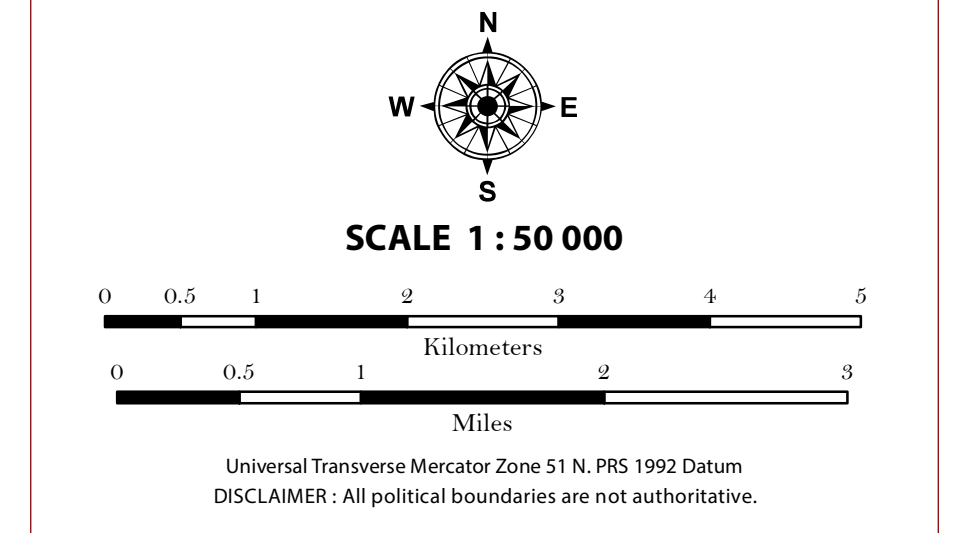


Source: PAGASA 2018, *Climatological Normals (Rainfall)*, Philippine Atmospheric, Geophysical and Astronomical Services Administration (PAGASA), accessed 27 July 2018, <<https://www1.pagasa.dost.gov.ph/index.php/climate/climatological-normals>>.



LAND SUITABILITY MAP RUBBER

LAND RESOURCES EVALUATION AND SUITABILITY ASSESSMENT OF STRATEGIC PRODUCTION AREAS



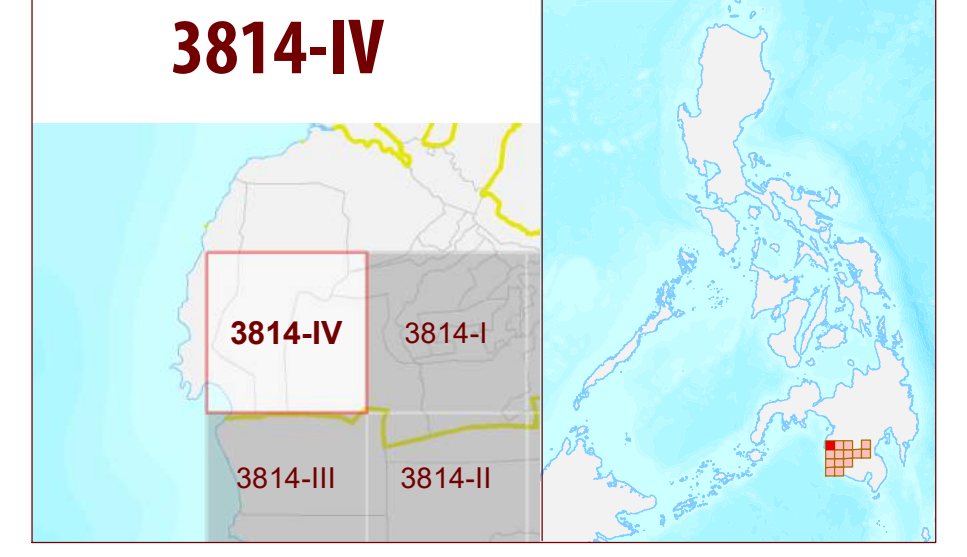
LEGEND

- SUITABILITY CLASSES**
- S1 Highly Suitable** - Land having no significant limitations to sustained application of a given use, or only minor limitations that will not significantly reduce productivity or benefits and will not raise inputs above an acceptable level.
 - S2 Moderately Suitable** - Land having limitations which in aggregate are moderately severe for sustained application of a given use; the limitations will reduce productivity or benefits and increase required inputs to the extent that the overall advantage to be gained from the use, although still attractive, will be appreciably inferior to that expected on class S1 land.
 - S3 Marginally Suitable** - Land having limitations which in aggregate are severe for sustained application of a given use and will so reduce productivity or benefits, or increase required inputs, that this expenditure will be only marginally justified.
- Not Suitable/ Not Relevant**
- OTHER SIGNS**
- NGP Areas
 - Cacao
 - Land limitation
 - Land use

CONVENTIONAL SIGNS

- ROADS**
- Expressway
 - Trunk line
 - Primary
 - Secondary
 - Tertiary
- BOUNDARY**
- Region
 - Province
 - District
 - Municipality
 - Barangay
- HYDROLOGY**
- Sea / Shoreline
 - Lakes / Rivers
- PLACES**
- Capital City / City
 - Capital Town / Town
- LAND USE**
- Built-up
 - Fishpond
 - Mangrove

ADJOINING SHEETS



MISCELLANEOUS INFORMATION

SOURCES OF INFORMATION : Topographic information taken from NAMRIA Topographic Map at 1:50,000 scale. Land resources information from the Agricultural Land Management and Evaluation Division (ALMED), Soils Survey Division (SSD) and Laboratory Services Division (LSD) of BSWM. Rice areas obtained from the Land Use System (FAO, 2015) and Philippine Rice Information System (PRISM) (IRRI, 2015). Data analysis and compilation through the Land Resources Evaluation and Suitability Assessment of Strategic Production Areas for Major Commodities Project implemented by BSWM (2017).

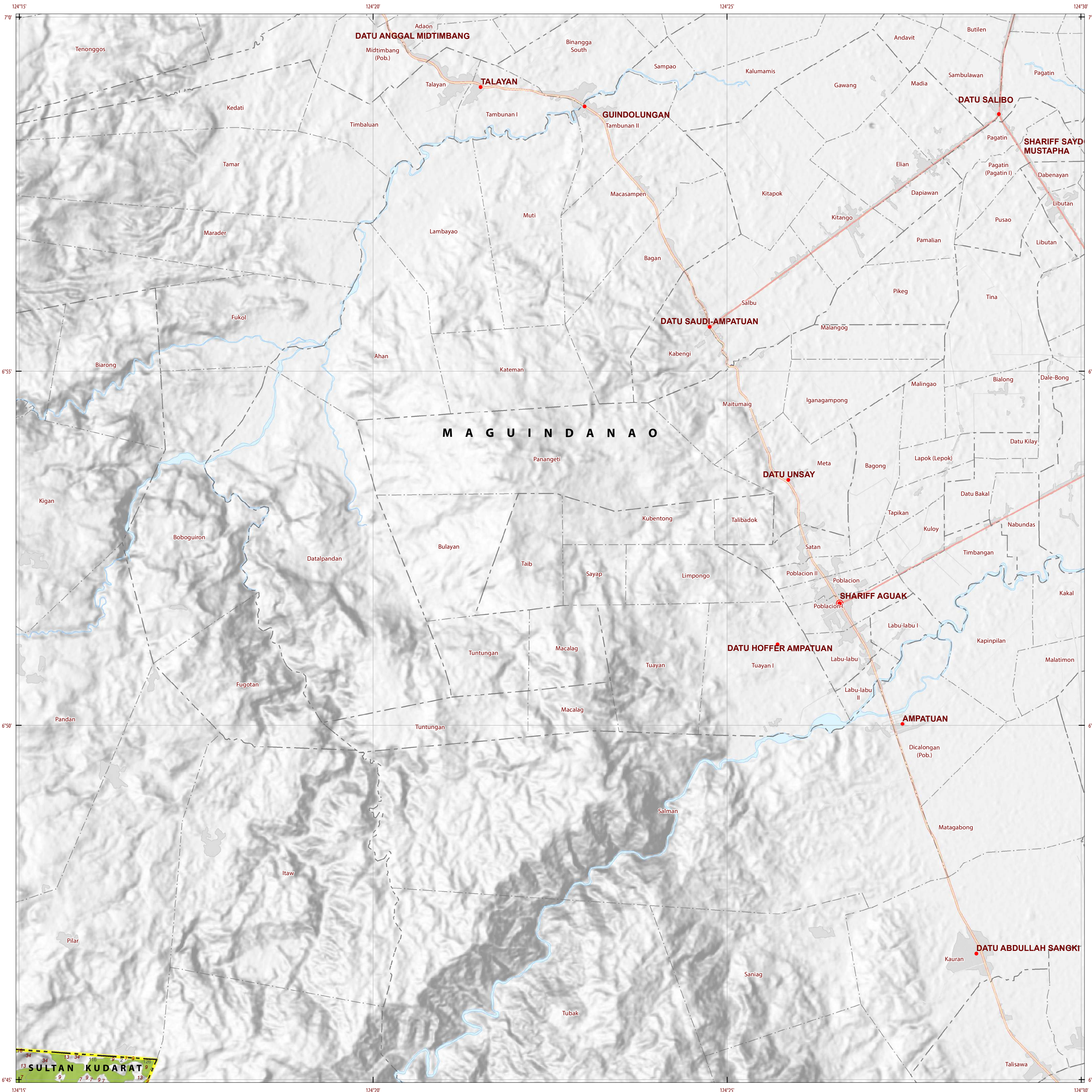
Project Leader : BERNARDO B. PASCUA
 GIS and Cartography : IRWIN K. SAMALCA

Funding Agency : Department of Agriculture - Bureau of Agricultural Research (DA-BAR)
 Collaborating Agencies : Philippine Council on Agriculture and Fisheries (PCAF)
 : Department of Agriculture and Fisheries - ARMM, Department of Agriculture Regional Field Office of Region IX, X, XI, XII and XIII (Caraga)
 : Local Government Unit (LGU) of covered provinces and municipalities

Map produced by the Geomatics and Soil Information Technology Division, Bureau of Soils and Water Management (BSWM).
 Users noting errors or omissions in this publication are requested to inform the Bureau of Soils and Water Management.

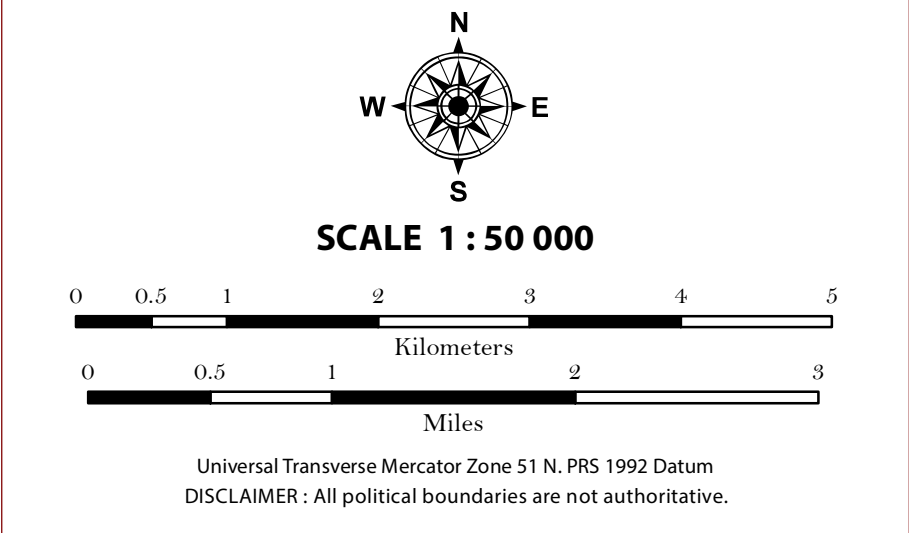
This publication is licensed under a Creative Commons Attribution 4.0 International License. Unless otherwise noted, copyright and any other intellectual property rights, in this publication is owned by the Philippine Government. This publication should be attributed as:
 BSWM, 2019. Land Suitability Map Series for Rubber of the PROVINCE OF SULTAN KUDARAT (50,000 Scale). CC BY-NC-SA 4.0.

REPUBLIC OF THE PHILIPPINES
 DEPARTMENT OF AGRICULTURE
 BUREAU OF SOILS AND WATER MANAGEMENT
 SRDC Bldg., Elliptical Road Cor. Visayas Avenue, Diliman, Quezon City 1101
 Tel/Fax No.:(+632) 332-9534 E-mail: bswmcenter@da.gov.ph



LAND SUITABILITY MAP RUBBER

LAND RESOURCES EVALUATION AND SUITABILITY ASSESSMENT OF STRATEGIC PRODUCTION AREAS



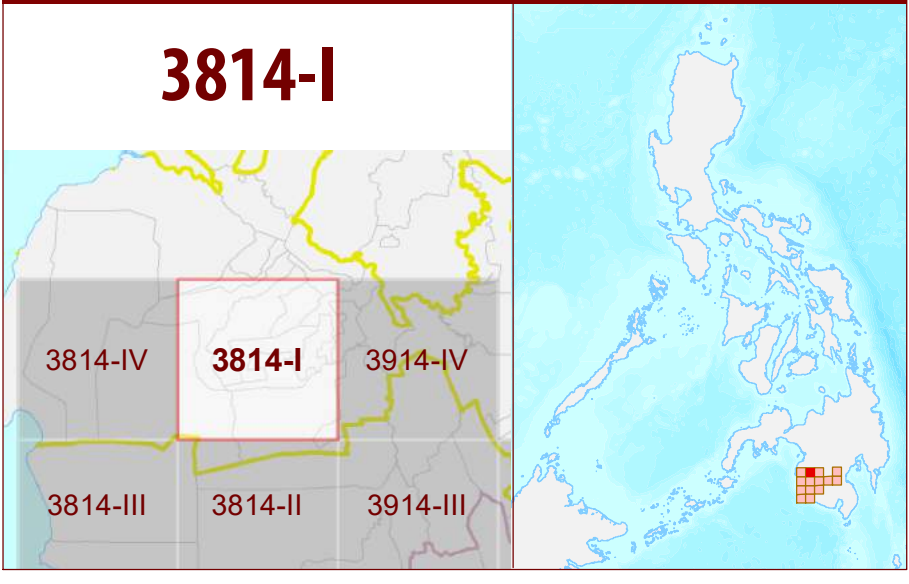
LEGEND

- SUITABILITY CLASSES**
- S1 Highly Suitable** - Land having no significant limitations to sustained application of a given use, or only minor limitations that will not significantly reduce productivity or benefits and will not raise inputs above an acceptable level.
 - S2 Moderately Suitable** - Land having limitations which in aggregate are moderately severe for sustained application of a given use; the limitations will reduce productivity or benefits and increase required inputs to the extent that the overall advantage to be gained from the use, although still attractive, will be appreciably inferior to that expected on class S1 land.
 - S3 Marginally Suitable** - Land having limitations which in aggregate are severe for sustained application of a given use and will so reduce productivity or benefits, or increase required inputs, that this expenditure will be only marginally justified.
- Not Suitable/ Not Relevant**
- OTHER SIGNS**
- NGP Areas
 - Cacao
 - Land limitation
 - Land use

CONVENTIONAL SIGNS

- | | | |
|--------------|-----------------|-----------------------|
| ROADS | BOUNDARY | HYDROLOGY |
| Expressway | Region | Sea / Shoreline |
| Trunk line | Province | Lakes / Rivers |
| Primary | District | PLACES |
| Secondary | Municipality | ★ Capital City / City |
| Tertiary | Barangay | ● Capital Town / Town |
- LAND USE**
- Built-up
 - Fishpond
 - Mangrove

ADJOINING SHEETS



MISCELLANEOUS INFORMATION

SOURCES OF INFORMATION: Topographic information taken from NAMRIA Topographic Map at 1:50,000 scale. Land resources information from the Agricultural Land Management and Evaluation Division (ALMED), Soils Survey Division (SSD) and Laboratory Services Division (LSD) of BSWM. Rice areas obtained from the Land Use System (FAO, 2015) and Philippine Rice Information System (PRISM) (IRRI, 2015). Data analysis and compilation through the Land Resources Evaluation and Suitability Assessment of Strategic Production Areas for Major Commodities Project implemented by BSWM (2017).

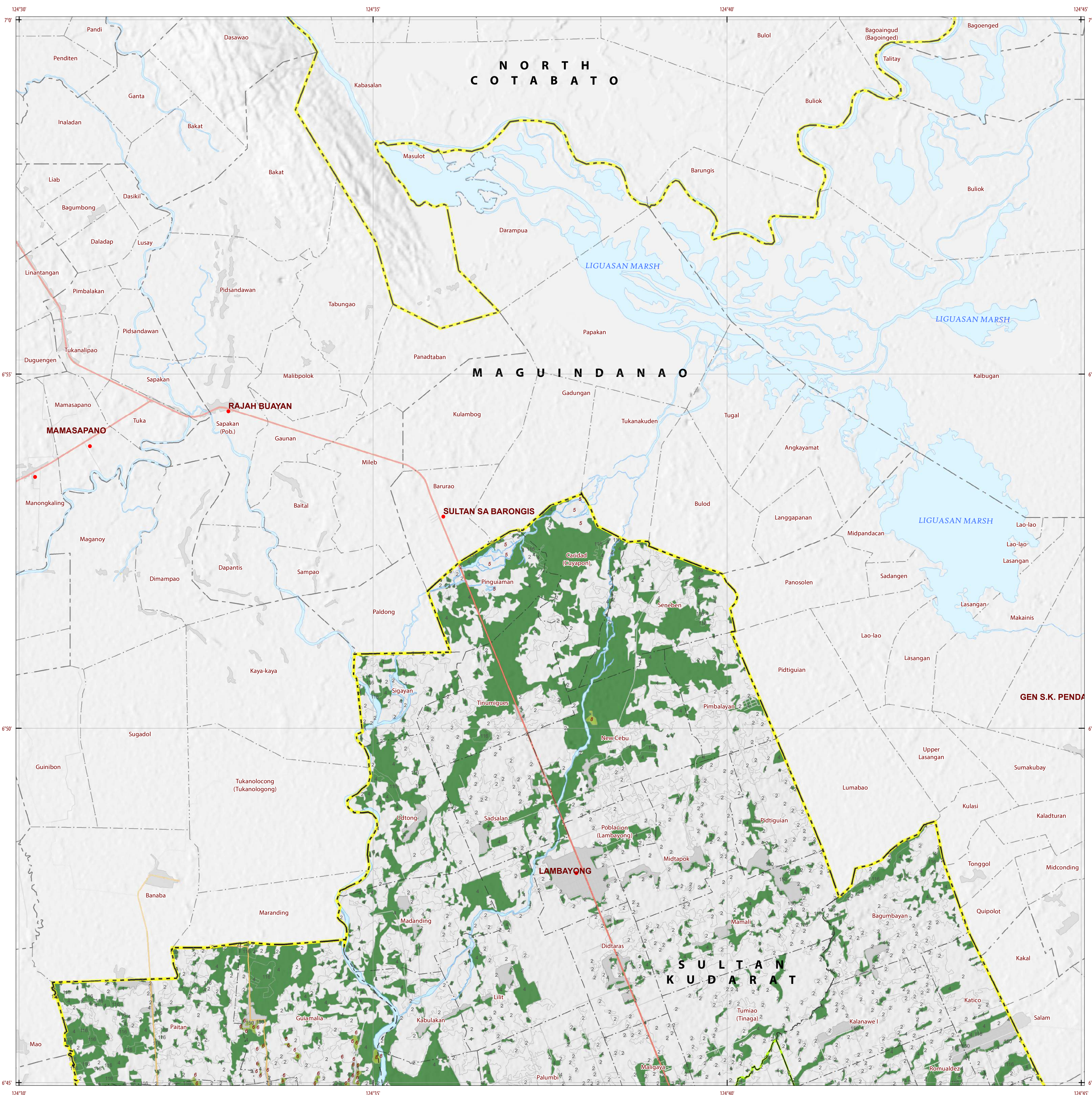
Project Leader : BERNARDO B. PASCUA
GIS and Cartography : IRWIN K. SAMALCA

Funding Agency : Department of Agriculture - Bureau of Agricultural Research (DA-BAR)
Collaborating Agencies : Philippine Council on Agriculture and Fisheries (PCAF)
: Department of Agriculture and Fisheries - ARMM, Department of Agriculture Regional Field Office of Region IX, X, XII and XIII (Caraga)
: Local Government Unit (LGU) of covered provinces and municipalities

Map produced by the Geomatics and Soil Information Technology Division, Bureau of Soils and Water Management (BSWM). Users noting errors or omissions in this publication are requested to inform the Bureau of Soils and Water Management.

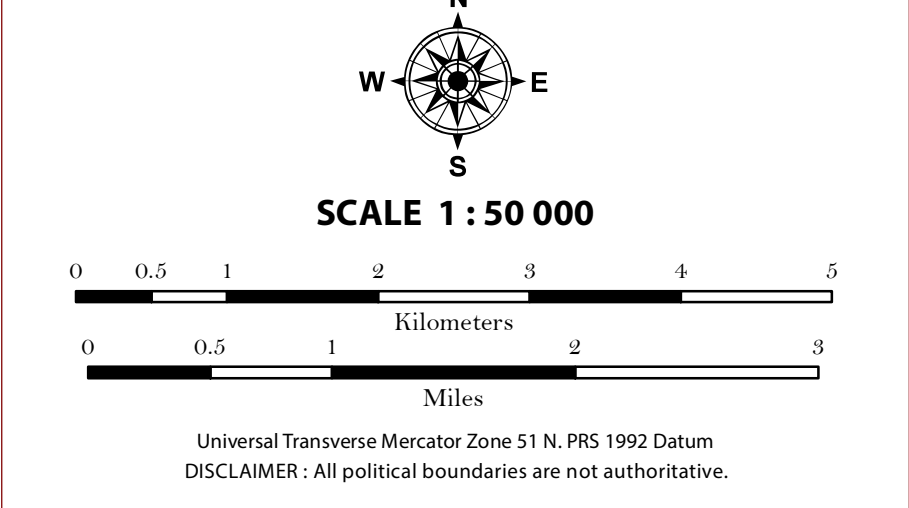
This publication is licensed under a Creative Commons Attribution 4.0 International License. Unless otherwise noted, copyright and any other intellectual property rights, in this publication is owned by the Philippine Government. This publication should be attributed as:
BSWM, 2019. Land Suitability Map Series for Rubber of the PROVINCE OF SULTAN KUDARAT (50,000 Scale). CC BY NC SA 4.0.

REPUBLIC OF THE PHILIPPINES
DEPARTMENT OF AGRICULTURE
BUREAU OF SOILS AND WATER MANAGEMENT
SRDC Bldg, Elliptical Road Cor. Visayas Avenue, Diliman, Quezon City 1101
Tel/Fax No.:(+632) 332-9534 E-mail: bswm@centerenters.gov.ph



LAND SUITABILITY MAP RUBBER

LAND RESOURCES EVALUATION AND SUITABILITY ASSESSMENT OF STRATEGIC PRODUCTION AREAS



LEGEND

SUITABILITY CLASSES

- S1 Highly Suitable** - Land having no significant limitations to sustained application of a given use, or only minor limitations that will not significantly reduce productivity or benefits and will not raise inputs above an acceptable level.
- S2 Moderately Suitable** - Land having limitations which in aggregate are moderately severe for sustained application of a given use; the limitations will reduce productivity or benefits and increase required inputs to the extent that the overall advantage to be gained from the use, although still attractive, will be appreciably inferior to that expected on class S1 land.
- S3 Marginally Suitable** - Land having limitations which in aggregate are severe for sustained application of a given use and will so reduce productivity or benefits, or increase required inputs, that this expenditure will be only marginally justified.
- Not Suitable/ Not Relevant**

OTHER SIGNS

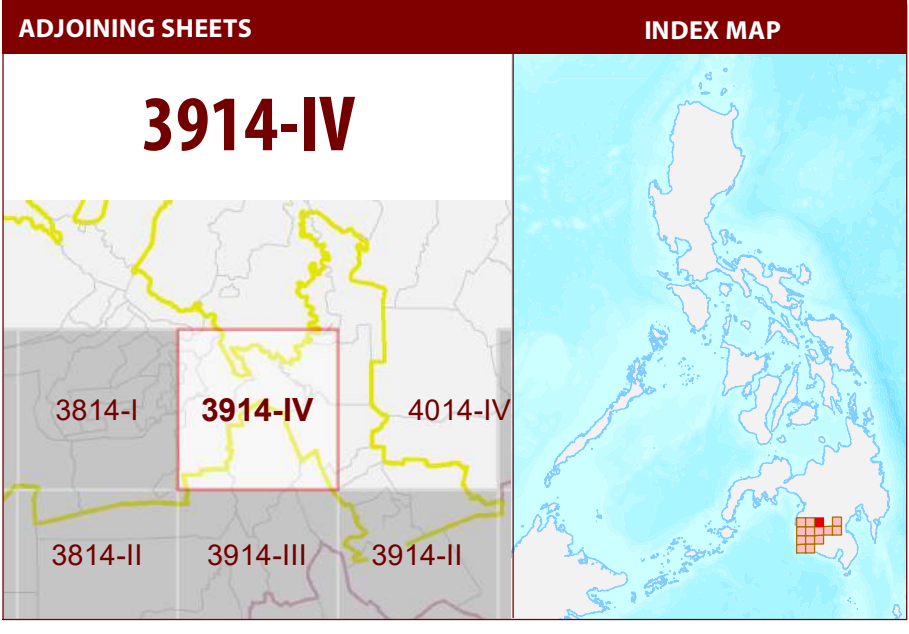
- NGP Areas
- Cacao
- Land limitation
- Land use

CONVENTIONAL SIGNS

ROADS	BOUNDARY	HYDROLOGY
Expressway	Region	Sea / Shoreline
Trunk line	Province	Lakes / Rivers
Primary	District	PLACES
Secondary	Municipality	★ Capital City / City
Tertiary	Barangay	● Capital Town / Town

LAND USE

- Built-up
- Fishpond
- Mangrove



MISCELLANEOUS INFORMATION

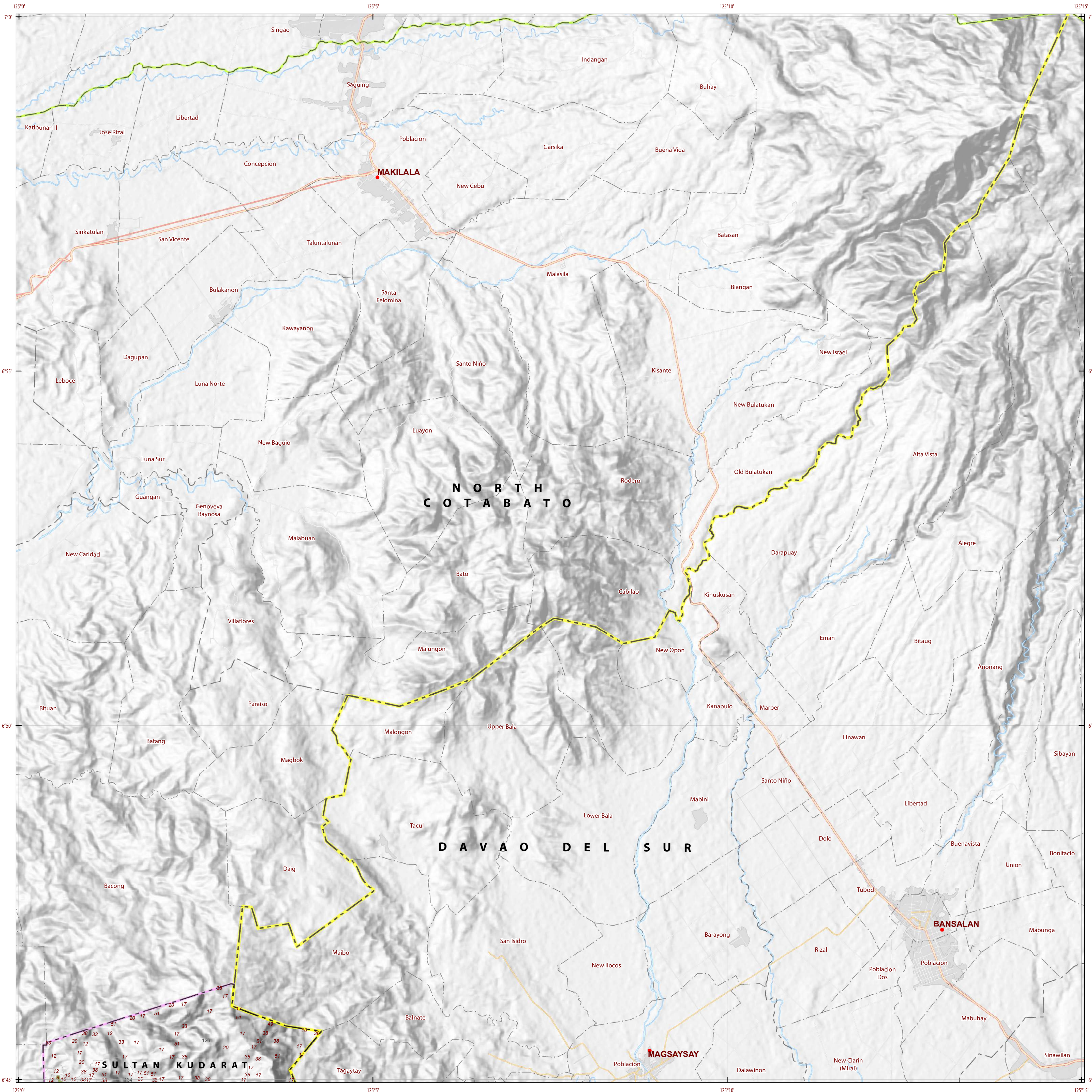
SOURCES OF INFORMATION: Topographic information taken from NAMRIA Topographic Map at 1:50,000 scale. Land resources information from the Agricultural Land Management and Evaluation Division (ALMED), Soils Survey Division (SSD) and Laboratory Services Division (LSD) of BSWM. Rice areas obtained from the Land Use System (FAO, 2015) and Philippine Rice Information System (PRISM) (IRRI, 2015). Data analysis and compilation through the Land Resources Evaluation and Suitability Assessment of Strategic Production Areas for Major Commodities Project implemented by BSWM (2017).

Project Leader : BERNARDO B. PASCUA
GIS and Cartography : IRWIN K. SAMALCA

Funding Agency : Department of Agriculture - Bureau of Agricultural Research (DA-BAR)
Collaborating Agencies : Philippine Council on Agriculture and Fisheries (PCAF)
: Department of Agriculture and Fisheries - ARMM, Department of Agriculture Regional Field Office of Region IX, X, XI, XII and XIII (Caraga)
: Local Government Unit (LGU) of covered provinces and municipalities

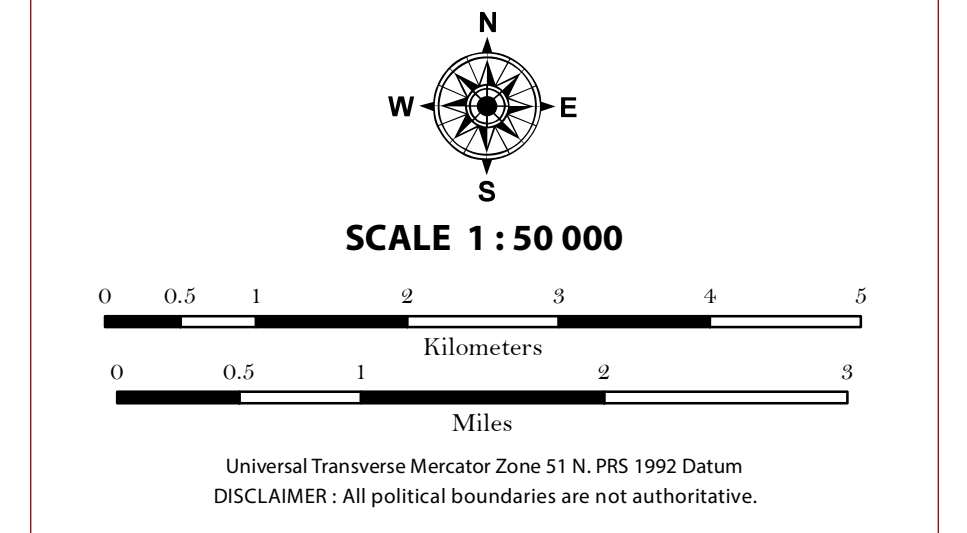
Map produced by the Geomatics and Soil Information Technology Division, Bureau of Soils and Water Management (BSWM). Users noting errors or omissions in this publication are requested to inform the Bureau of Soils and Water Management.

This publication is licensed under a Creative Commons Attribution 4.0 International License. Unless otherwise noted, copyright and any other intellectual property rights, in this publication is owned by the Philippine Government. This publication should be attributed as:
BSWM, 2019. Land Suitability Map Series for Rubber of the PROVINCE OF SULTAN KUDARAT (50,000 Scale). CC BY NC SA 4.0.



LAND SUITABILITY MAP RUBBER

LAND RESOURCES EVALUATION AND SUITABILITY ASSESSMENT OF STRATEGIC PRODUCTION AREAS



LEGEND

SUITABILITY CLASSES

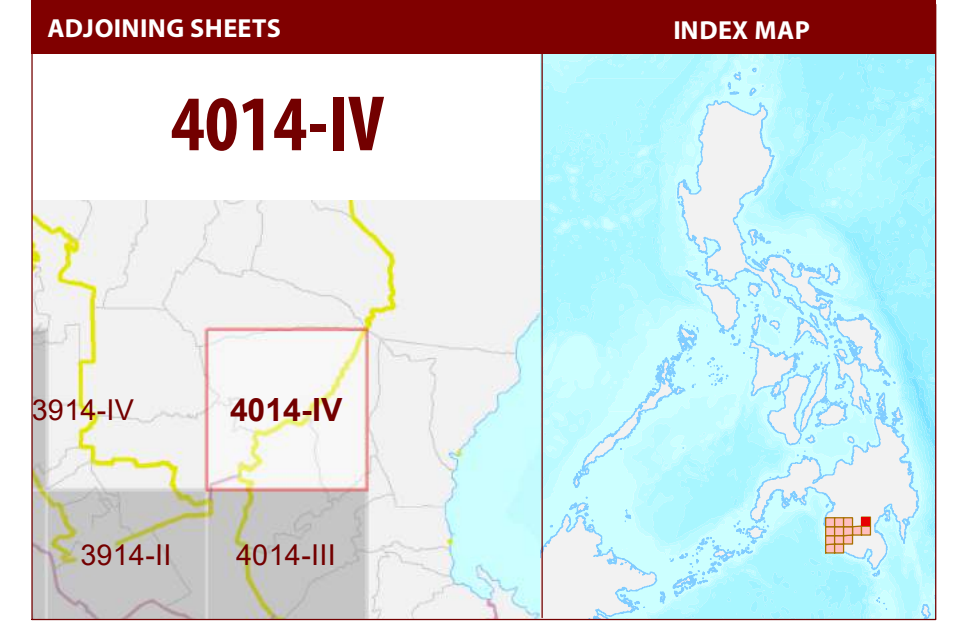
- S1 Highly Suitable** - Land having no significant limitations to sustained application of a given use, or only minor limitations that will not significantly reduce productivity or benefits and will not raise inputs above an acceptable level.
- S2 Moderately Suitable** - Land having limitations which in aggregate are moderately severe for sustained application of a given use; the limitations will reduce productivity or benefits and increase required inputs to the extent that the overall advantage to be gained from the use, although still attractive, will be appreciably inferior to that expected on class S1 land.
- S3 Marginally Suitable** - Land having limitations which in aggregate are severe for sustained application of a given use and will so reduce productivity or benefits, or increase required inputs, that this expenditure will be only marginally justified.
- Not Suitable/ Not Relevant**

OTHER SIGNS

- NGP Areas
- Cacao
- Land limitation
- Land use

CONVENTIONAL SIGNS

ROADS	BOUNDARY	HYDROLOGY
Expressway	Region	Sea / Shoreline
Trunk line	Province	Lakes / Rivers
Primary	District	PLACES
Secondary	Municipality	Capital City / City
Tertiary	Barangay	Capital Town / Town
LAND USE		
Built-up	Fishpond	Mangrove



MISCELLANEOUS INFORMATION

SOURCES OF INFORMATION: Topographic information taken from NAMRIA Topographic Map at 1:50,000 scale. Land resources information from the Agricultural Land Management and Evaluation Division (ALMED), Soils Survey Division (SSD) and Laboratory Services Division (LSD) of BSWM. Rice areas obtained from the Land Use System (FAO, 2015) and Philippine Rice Information System (PRISM) (IRRI, 2015). Data analysis and compilation through the Land Resources Evaluation and Suitability Assessment of Strategic Production Areas for Major Commodities Project implemented by BSWM (2017).

Project Leader : BERNARDO B. PASCUA
 GIS and Cartography : IRWIN K. SAMALCJA

Funding Agency : Department of Agriculture - Bureau of Agricultural Research (DA-BAR)
 Collaborating Agencies : Philippine Council on Agriculture and Fisheries (PCAF)
 : Department of Agriculture and Fisheries - ARMM, Department of Agriculture Regional Field Office of Region IX, X, XI, XII and XIII (Caraga)
 : Local Government Unit (LGU) of covered provinces and municipalities

Map produced by the Geomatics and Soil Information Technology Division, Bureau of Soils and Water Management (BSWM).
 Users noting errors or omissions in this publication are requested to inform the Bureau of Soils and Water Management.

This publication is licensed under a Creative Commons Attribution 4.0 International License. Unless otherwise noted, copyright and any other intellectual property rights, in this publication is owned by the Philippine Government. This publication should be attributed as:
 BSWM, 2019. Land Suitability Map Series for Rubber of the PROVINCE OF SULTAN KUDARAT (50,000 Scale). CC BY NC SA 4.0.

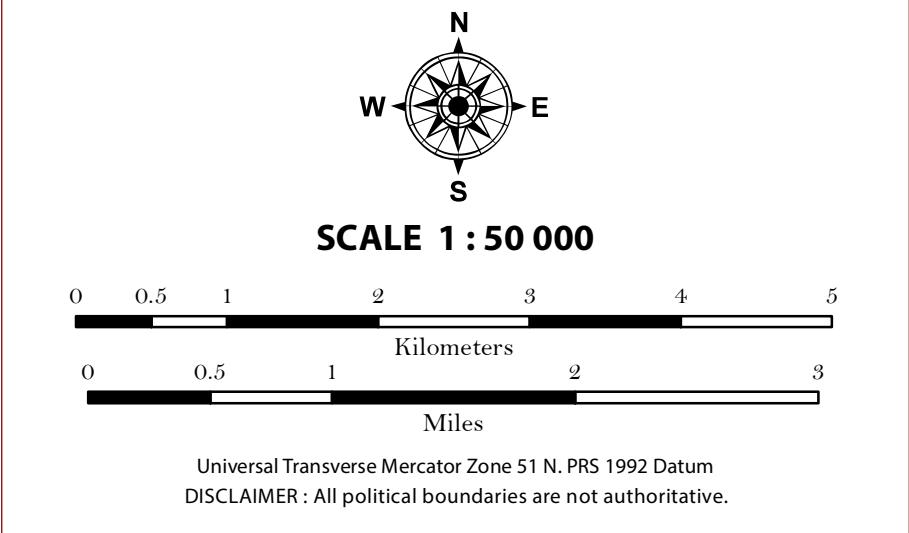
REPUBLIC OF THE PHILIPPINES
DEPARTMENT OF AGRICULTURE
BUREAU OF SOILS AND WATER MANAGEMENT
 SRDC Bldg., Elliptical Road Cor. Visayas Avenue, Diliman, Quezon City 1101
 Tel/Fax No.: (+632) 332-9534 E-mail: bswm@centerentenday.gov.ph

PROVINCE OF SULTAN KUDARAT Sheet 4 of 14 Sheet No. 4014-IV



LAND SUITABILITY MAP RUBBER

LAND RESOURCES EVALUATION AND SUITABILITY ASSESSMENT OF STRATEGIC PRODUCTION AREAS



LEGEND

SUITABILITY CLASSES

- S1 Highly Suitable** - Land having no significant limitations to sustained application of a given use, or only minor limitations that will not significantly reduce productivity or benefits and will not raise inputs above an acceptable level.
- S2 Moderately Suitable** - Land having limitations which in aggregate are moderately severe for sustained application of a given use; the limitations will reduce productivity or benefits and increase required inputs to the extent that the overall advantage to be gained from the use, although still attractive, will be appreciably inferior to that expected on class S1 land.
- S3 Marginally Suitable** - Land having limitations which in aggregate are severe for sustained application of a given use and will so reduce productivity or benefits, or increase required inputs, that this expenditure will be only marginally justified.
- Not Suitable/ Not Relevant**

OTHER SIGNS

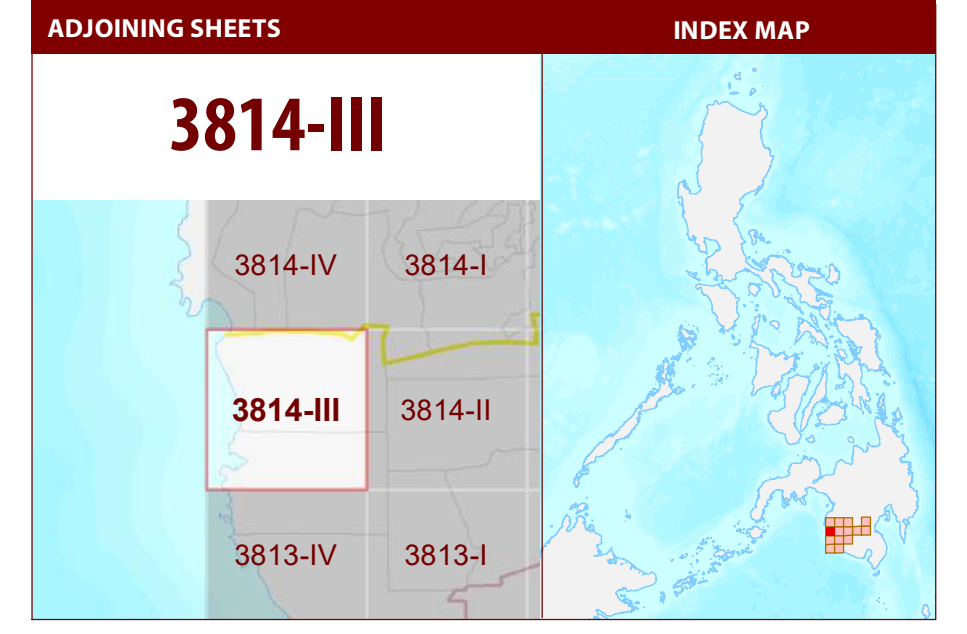
- NGP Areas
- Cacao
- Land limitation
- Land use

CONVENTIONAL SIGNS

ROADS	BOUNDARY	HYDROLOGY
Expressway	Region	Sea / Shoreline
Trunk line	Province	Lakes / Rivers
Primary	District	PLACES
Secondary	Municipality	★ Capital City / City
Tertiary	Barangay	● Capital Town / Town

LAND USE

- Built-up
- Fishpond
- Mangrove



MISCELLANEOUS INFORMATION

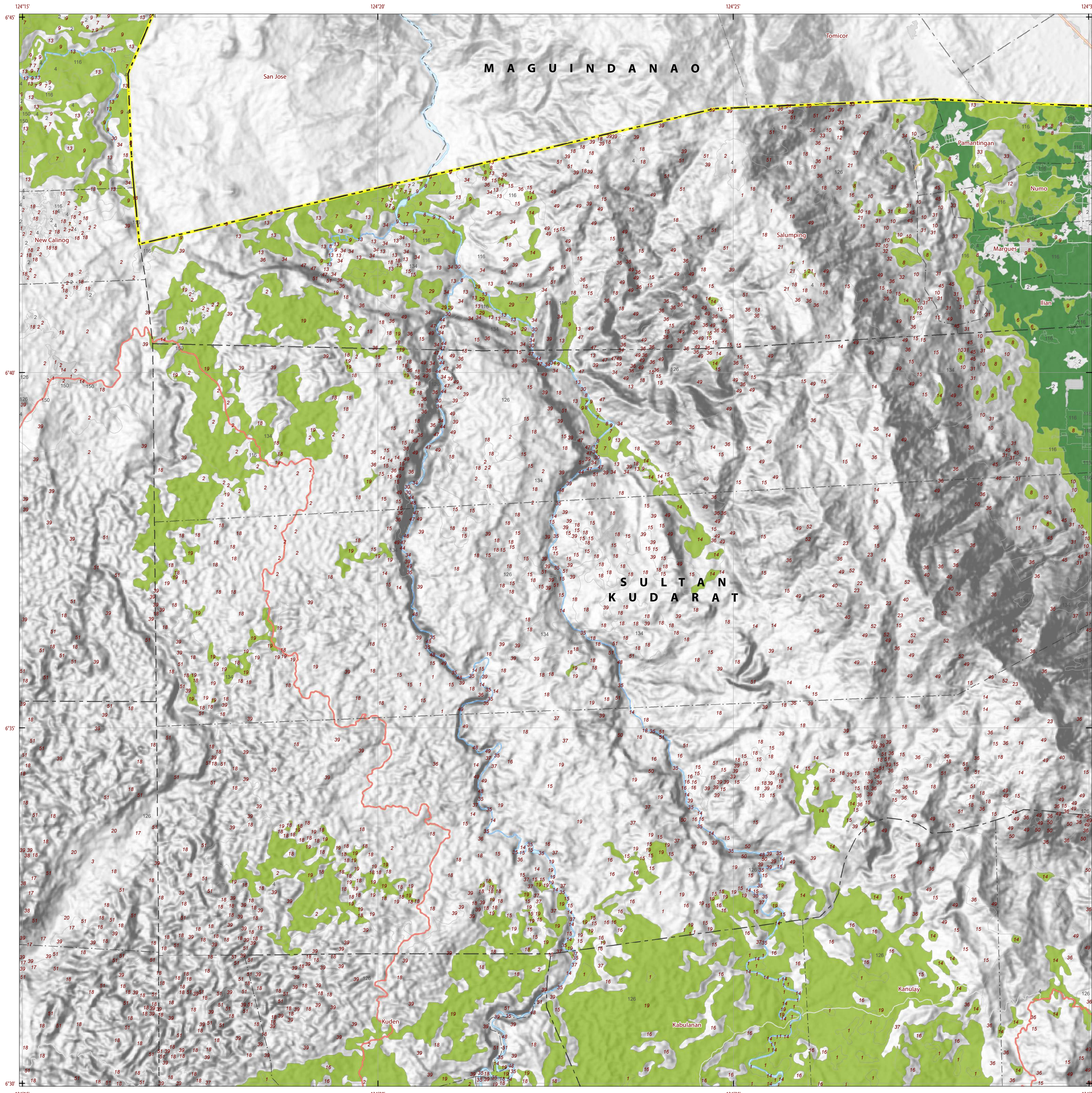
SOURCES OF INFORMATION: Topographic information taken from NAMRIA Topographic Map at 1:50,000 scale. Land resources information from the Agricultural Land Management and Evaluation Division (ALMED), Soils Survey Division (SSD) and Laboratory Services Division (LSD) of BSWM. Rice areas obtained from the Land Use System (FAO, 2015) and Philippine Rice Information System (PRISM) (IRRI, 2015). Data analysis and compilation through the Land Resources Evaluation and Suitability Assessment of Strategic Production Areas for Major Commodities Project implemented by BSWM (2017).

Project Leader : BERNARDO B. PASCUA
GIS and Cartography : IRWIN K. SAMALCA

Funding Agency : Department of Agriculture - Bureau of Agricultural Research (DA-BAR)
Collaborating Agencies : Philippine Council on Agriculture and Fisheries (PCAF)
: Department of Agriculture and Fisheries - ARMM, Department of Agriculture Regional Field Office of Region IX, X, XII and XIII (Caraga)
: Local Government Unit (LGU) of covered provinces and municipalities

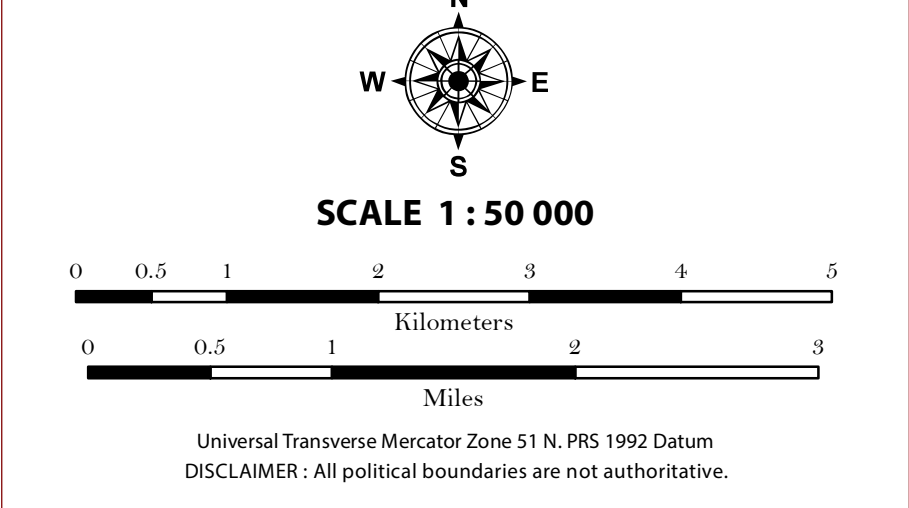
Map produced by the Geomatics and Soil Information Technology Division, Bureau of Soils and Water Management.
Users noting errors or omissions in this publication are requested to inform the Bureau of Soils and Water Management.

This publication is licensed under a Creative Commons Attribution 4.0 International License. Unless otherwise noted, copyright and any other intellectual property rights in this publication is owned by the Philippine Government. This publication should be attributed as:
BSWM, 2019. Land Suitability Map Series for Rubber of the PROVINCE OF SULTAN KUDARAT (50,000 Scale). CC BY NC SA 4.0.



LAND SUITABILITY MAP RUBBER

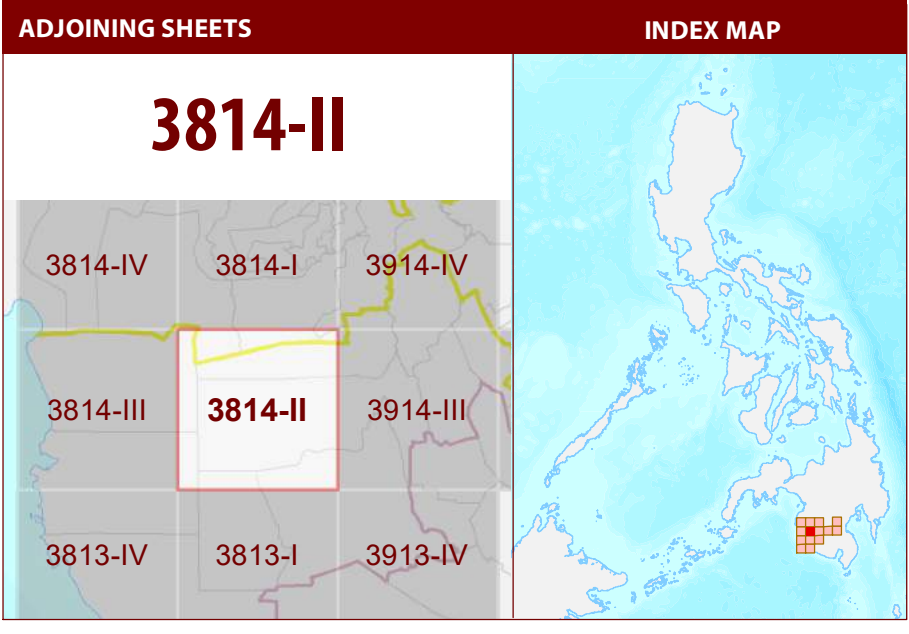
LAND RESOURCES EVALUATION AND SUITABILITY ASSESSMENT OF STRATEGIC PRODUCTION AREAS



LEGEND

- SUITABILITY CLASSES**
- S1 Highly Suitable** - Land having no significant limitations to sustained application of a given use, or only minor limitations that will not significantly reduce productivity or benefits and will not raise inputs above an acceptable level.
 - S2 Moderately Suitable** - Land having limitations which in aggregate are moderately severe for sustained application of a given use; the limitations will reduce productivity or benefits and increase required inputs to the extent that the overall advantage to be gained from the use, although still attractive, will be appreciably inferior to that expected on class S1 land.
 - S3 Marginally Suitable** - Land having limitations which in aggregate are severe for sustained application of a given use and will so reduce productivity or benefits, or increase required inputs, that this expenditure will be only marginally justified.
- Not Suitable/ Not Relevant**
- OTHER SIGNS**
- NGP Areas
 - Cacao
 - Land limitation
 - Land use

- CONVENTIONAL SIGNS**
- | | | |
|--------------|-----------------|-----------------------|
| ROADS | BOUNDARY | HYDROLOGY |
| Expressway | Region | Sea / Shoreline |
| Trunk line | Province | Lakes / Rivers |
| Primary | District | PLACES |
| Secondary | Municipality | ★ Capital City / City |
| Tertiary | Barangay | ● Capital Town / Town |
- LAND USE**
- Built-up
 - Fishpond
 - Mangrove



MISCELLANEOUS INFORMATION

SOURCES OF INFORMATION: Topographic information taken from NAMRIA Topographic Map at 1:50,000 scale. Land resources information from the Agricultural Land Management and Evaluation Division (ALMED), Soils Survey Division (SSD) and Laboratory Services Division (LSD) of BSWM. Rice areas obtained from the Land Use System (FAO, 2015) and Philippine Rice Information System (PRISM) (IRRI, 2015). Data analysis and compilation through the Land Resources Evaluation and Suitability Assessment of Strategic Production Areas for Major Commodities Project implemented by BSWM (2017).

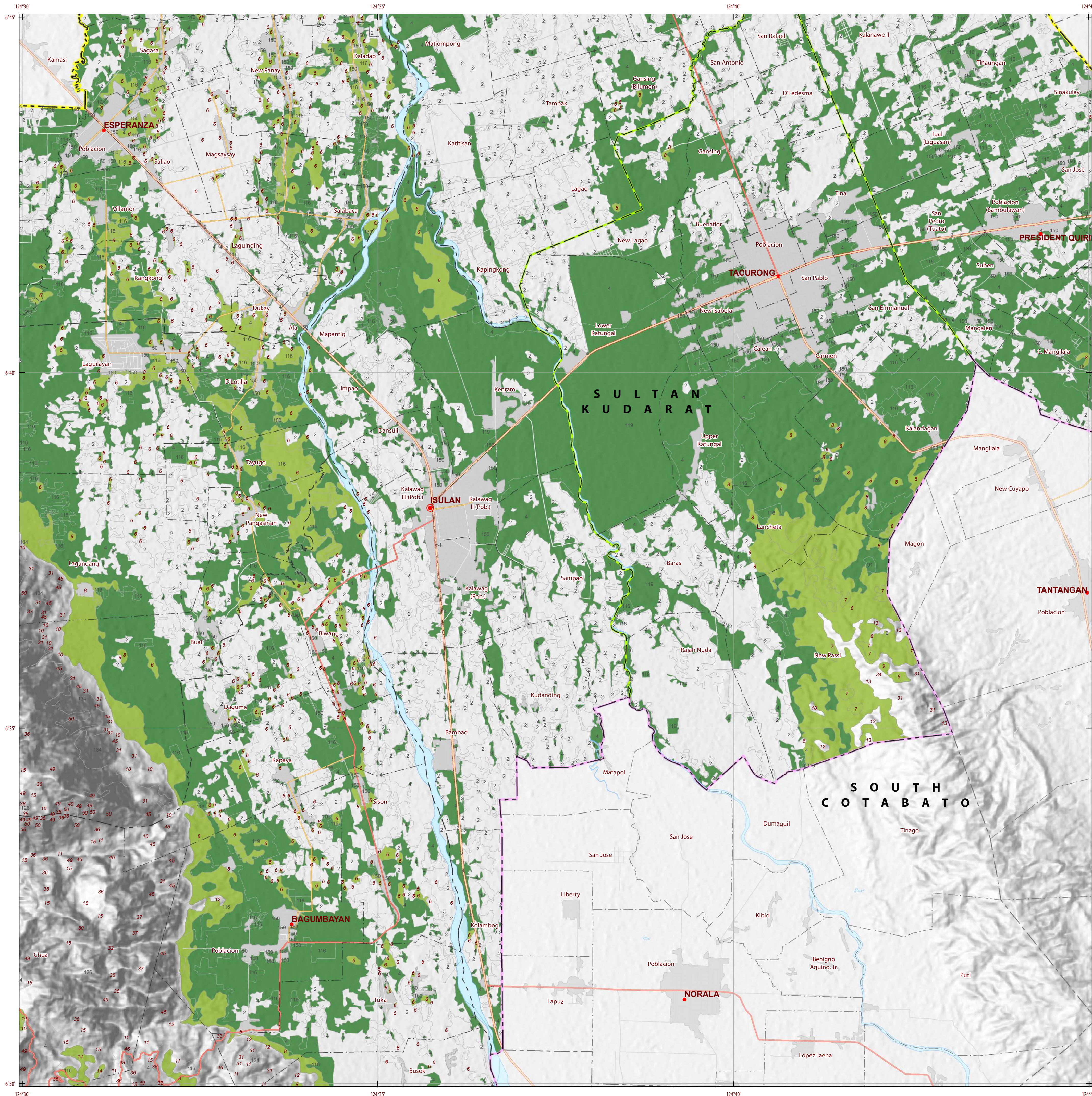
Project Leader : BERNARDO B. PASCUA
GIS and Cartography : IRWIN K. SAMALCA

Funding Agency : Department of Agriculture - Bureau of Agricultural Research (DA-BAR)
Collaborating Agencies : Philippine Council on Agriculture and Fisheries (PCAF)
: Department of Agriculture and Fisheries - ARMM, Department of Agriculture Regional Field Office of Region IX, X, XI, XII and XIII (Caraga)
: Local Government Unit (LGU) of covered provinces and municipalities

Map produced by the Geomatics and Soil Information Technology Division, Bureau of Soils and Water Management (BSWM). Users noting errors or omissions in this publication are requested to inform the Bureau of Soils and Water Management.

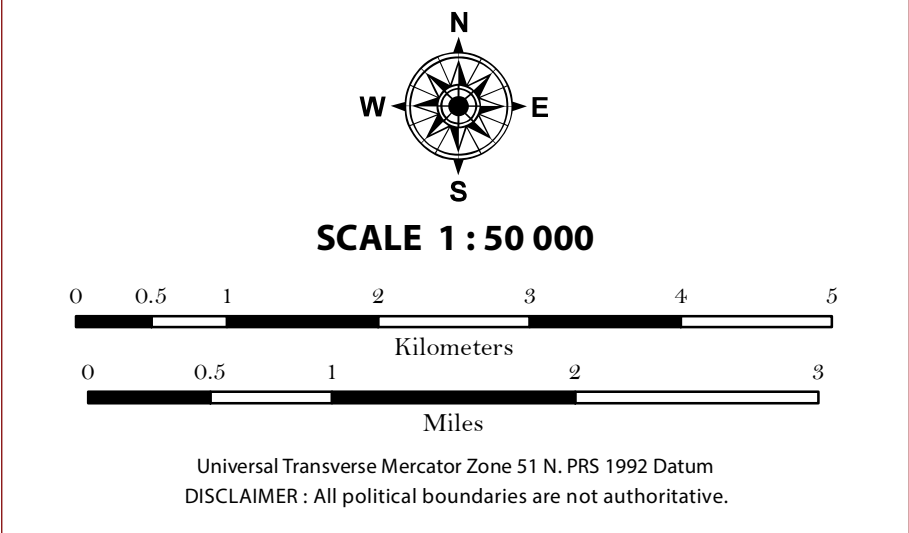
This publication is licensed under a Creative Commons Attribution 4.0 International License. Unless otherwise noted, copyright and any other intellectual property rights in this publication is owned by the Philippine Government. This publication should be attributed as:
BSWM, 2019. Land Suitability Map Series for Rubber of the PROVINCE OF SULTAN KUDARAT (50,000 Scale). CC BY NC SA 4.0.

REPUBLIC OF THE PHILIPPINES
DEPARTMENT OF AGRICULTURE
BUREAU OF SOILS AND WATER MANAGEMENT
SRDC Bldg, Elliptical Road Cor. Visayas Avenue, Diliman, Quezon City 1101
Tel/Fax No.:(+632) 332-9534 E-mail: bswmcenter@da.gov.ph



LAND SUITABILITY MAP RUBBER

LAND RESOURCES EVALUATION AND SUITABILITY ASSESSMENT OF STRATEGIC PRODUCTION AREAS



LEGEND

SUITABILITY CLASSES

- S1 Highly Suitable** - Land having no significant limitations to sustained application of a given use, or only minor limitations that will not significantly reduce productivity or benefits and will not raise inputs above an acceptable level.
- S2 Moderately Suitable** - Land having limitations which in aggregate are moderately severe for sustained application of a given use; the limitations will reduce productivity or benefits and increase required inputs to the extent that the overall advantage to be gained from the use, although still attractive, will be appreciably inferior to that expected on class S1 land.
- S3 Marginally Suitable** - Land having limitations which in aggregate are severe for sustained application of a given use and will so reduce productivity or benefits, or increase required inputs, that this expenditure will be only marginally justified.

Not Suitable/ Not Relevant

OTHER SIGNS

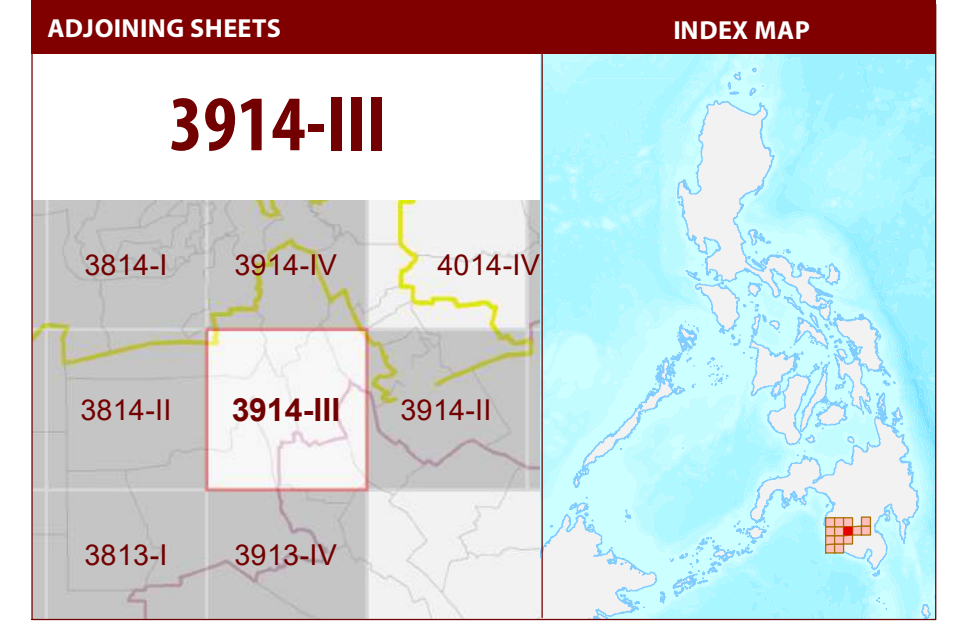
- NGP Areas
- Cacao
- Land limitation
- Land use

CONVENTIONAL SIGNS

ROADS	BOUNDARY	HYDROLOGY
Expressway	Region	Sea / Shoreline
Trunk line	Province	Lakes / Rivers
Primary	District	PLACES
Secondary	Municipality	★ Capital City / City
Tertiary	Barangay	● Capital Town / Town

LAND USE

- Built-up
- Fishpond
- Mangrove



MISCELLANEOUS INFORMATION

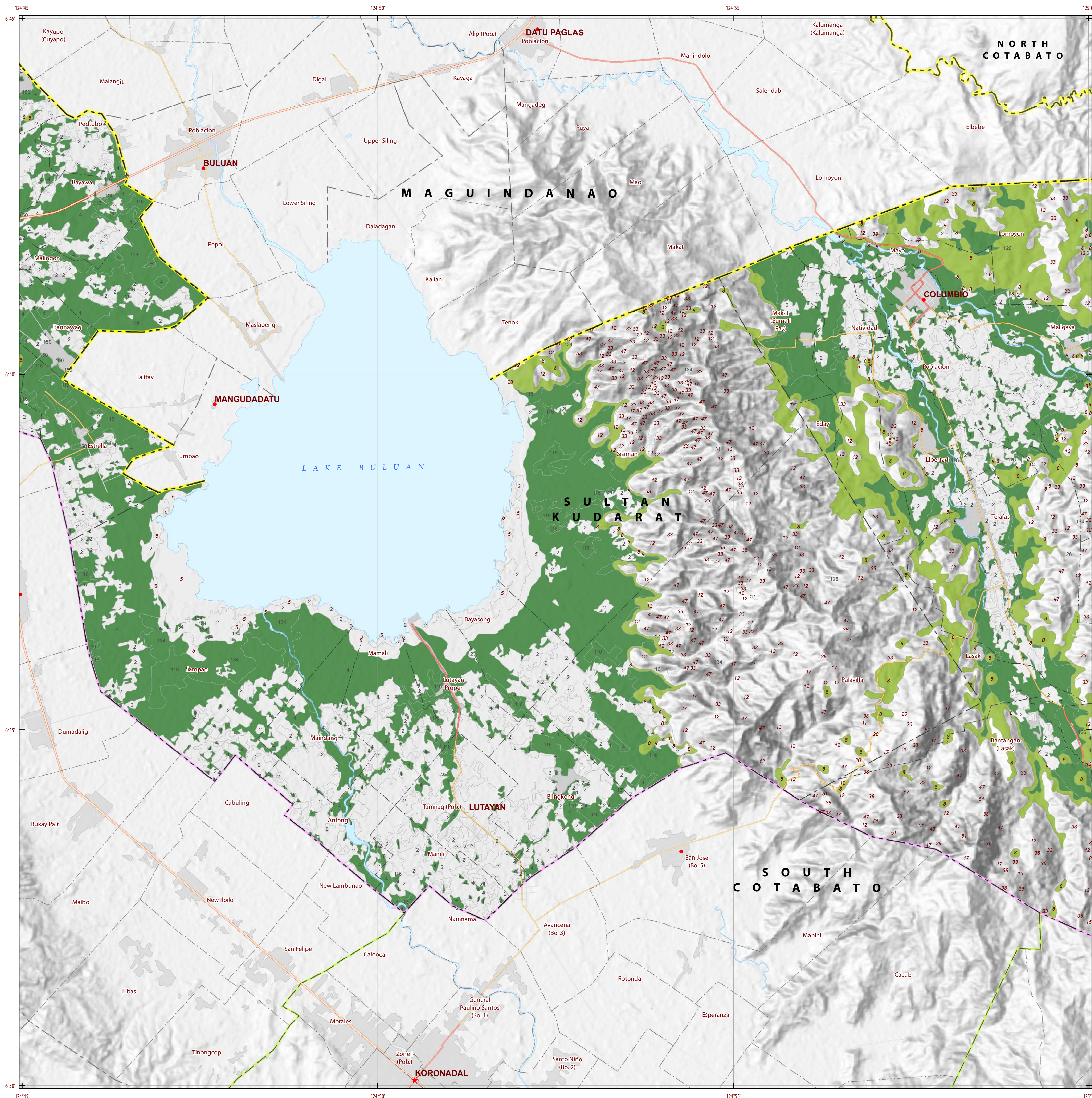
SOURCES OF INFORMATION : Topographic information taken from NAMRIA Topographic Map at 1:50,000 scale. Land resources information from the Agricultural Land Management and Evaluation Division (ALMED), Soils Survey Division (SSD) and Laboratory Services Division (LSD) of BSWM. Rice areas obtained from the Land Use System (FAO, 2015) and Philippine Rice Information System (PRISM) (IRRI, 2015). Data analysis and compilation through the Land Resources Evaluation and Suitability Assessment of Strategic Production Areas for Major Commodities Project implemented by BSWM (2017).

Project Leader : BERNARDO B. PASCUA
GIS and Cartography : IRWIN K. SAMALCA

Funding Agency : Department of Agriculture - Bureau of Agricultural Research (DA-BAR)
Collaborating Agencies : Philippine Council on Agriculture and Fisheries (PCAF)
: Department of Agriculture and Fisheries - ARMM, Department of Agriculture Regional Field Office of Region IX, X, XI, XII and XIII (Caraga)
: Local Government Unit (LGU) of covered provinces and municipalities

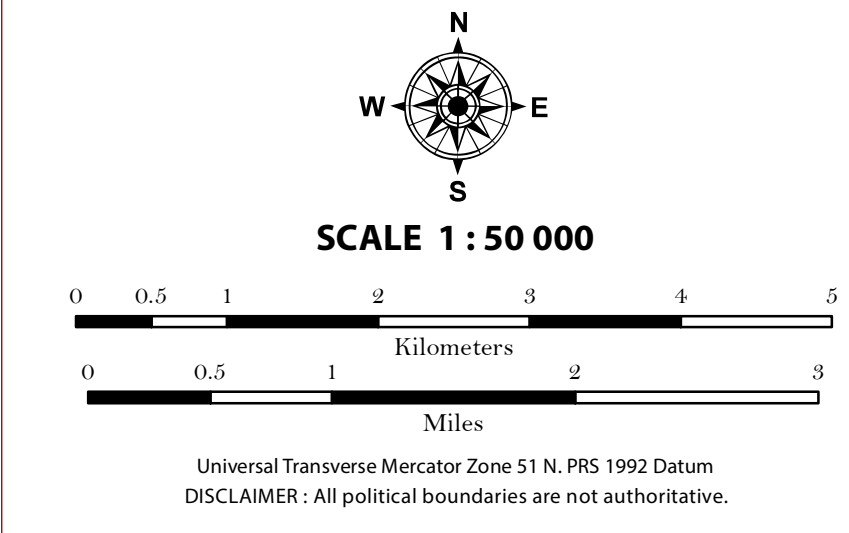
Map produced by the Geomatics and Soil Information Technology Division, Bureau of Soils and Water Management (BSWM).
Users noting errors or omissions in this publication are requested to inform the Bureau of Soils and Water Management.

This publication is licensed under a Creative Commons Attribution 4.0 International License. Unless otherwise noted, copyright and any other intellectual property rights, in this publication is owned by the Philippine Government. This publication should be attributed as:
BSWM, 2019. Land Suitability Map Series for Rubber of the PROVINCE OF SULTAN KUDARAT (50,000 Scale). CC BY NC SA 4.0.



LAND SUITABILITY MAP RUBBER

LAND RESOURCES EVALUATION AND SUITABILITY ASSESSMENT OF STRATEGIC PRODUCTION AREAS



LEGEND

SUITABILITY CLASSES

- S1 Highly Suitable** - Land having no significant limitations to sustained application of a given use, or only minor limitations that will not significantly reduce productivity or benefits and will not raise inputs above an acceptable level.
- S2 Moderately Suitable** - Land having limitations which in aggregate are moderately severe for sustained application of a given use; the limitations will reduce productivity or benefits and increase required inputs to the extent that the overall advantage to be gained from the use, although still attractive, will be appreciably inferior to that expected on class S1 land.
- S3 Marginally Suitable** - Land having limitations which in aggregate are severe for sustained application of a given use and will so reduce productivity or benefits, or increase required inputs, that this expenditure will be only marginally justified.
- Not Suitable/ Not Relevant**

OTHER SIGNS

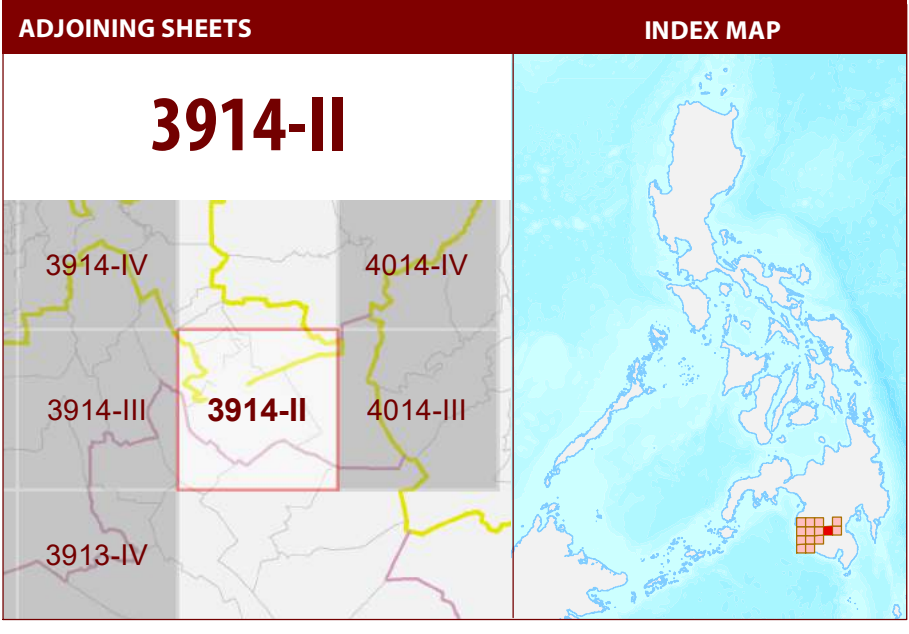
- NGP Areas
- Cacao
- Land limitation
- Land use

CONVENTIONAL SIGNS

ROADS	BOUNDARY	HYDROLOGY
Expressway	Region	Sea / Shoreline
Trunk line	Province	Lakes / Rivers
Primary	District	PLACES
Secondary	Municipality	★ Capital City / City
Tertiary	Barangay	● Capital Town / Town

LAND USE

- Built-up
- Fishpond
- Mangrove



MISCELLANEOUS INFORMATION

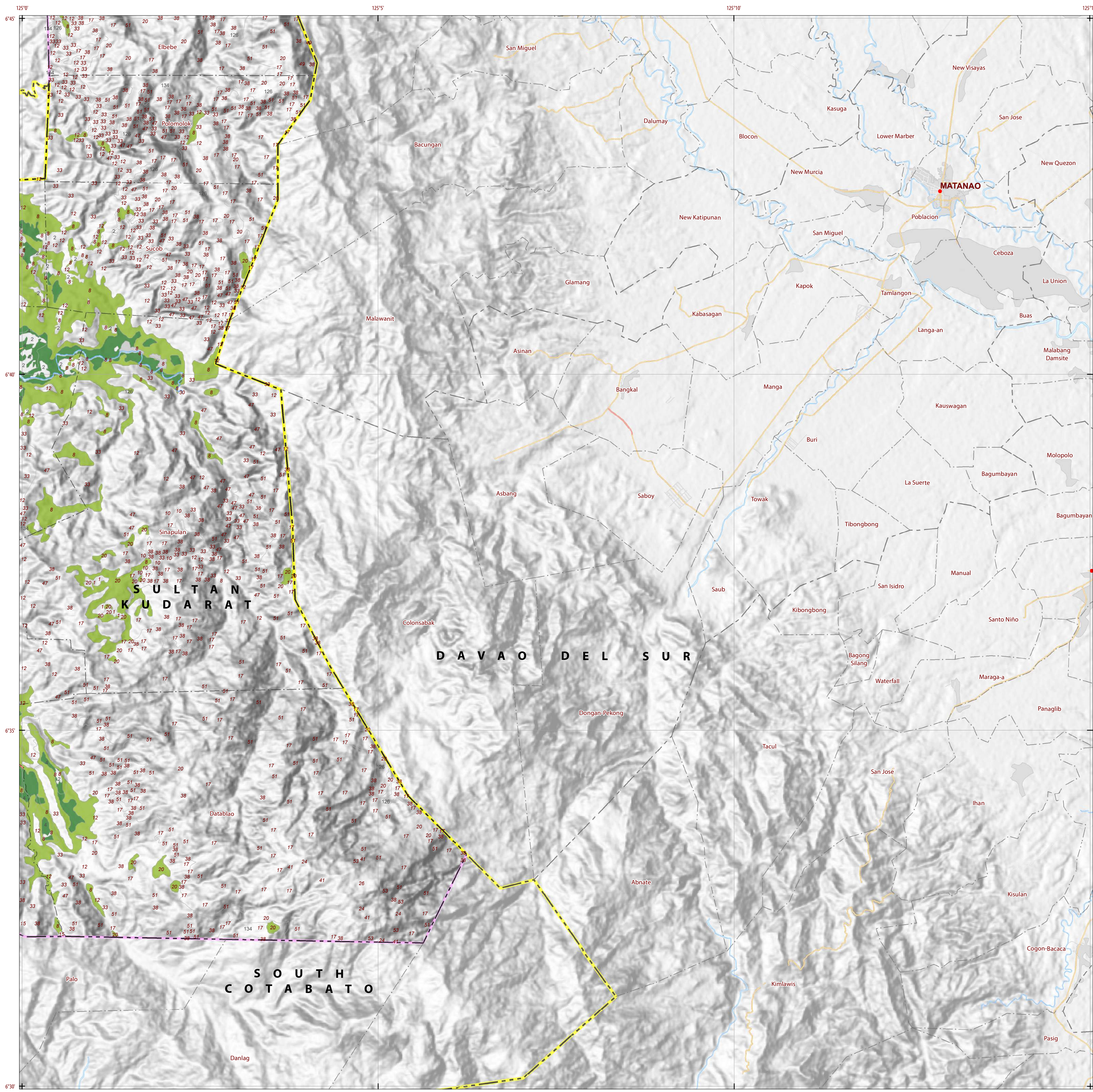
SOURCES OF INFORMATION: Topographic information taken from NAMRIA Topographic Map at 1:50,000 scale. Land resources information from the Agricultural Land Management and Evaluation Division (ALMED), Soils Survey Division (SSD) and Laboratory Services Division (LSD) of BSWM. Rice areas obtained from the Land Use System (FAO, 2015) and Philippine Rice Information System (PRISM) (IRRI, 2015). Data analysis and compilation through the Land Resources Evaluation and Suitability Assessment of Strategic Production Areas for Major Commodities Project implemented by BSWM (2017).

Project Leader : BERNARDO B. PASCUA
 GIS and Cartography : IRWIN K. SAMALCA

Funding Agency : Department of Agriculture - Bureau of Agricultural Research (DA-BAR)
 Collaborating Agencies : Philippine Council on Agriculture and Fisheries (PCAF)
 : Department of Agriculture and Fisheries - ARMM, Department of Agriculture Regional Field Office of Region IX, X, XI, XII and XIII (Caraga)
 : Local Government Unit (LGU) of covered provinces and municipalities

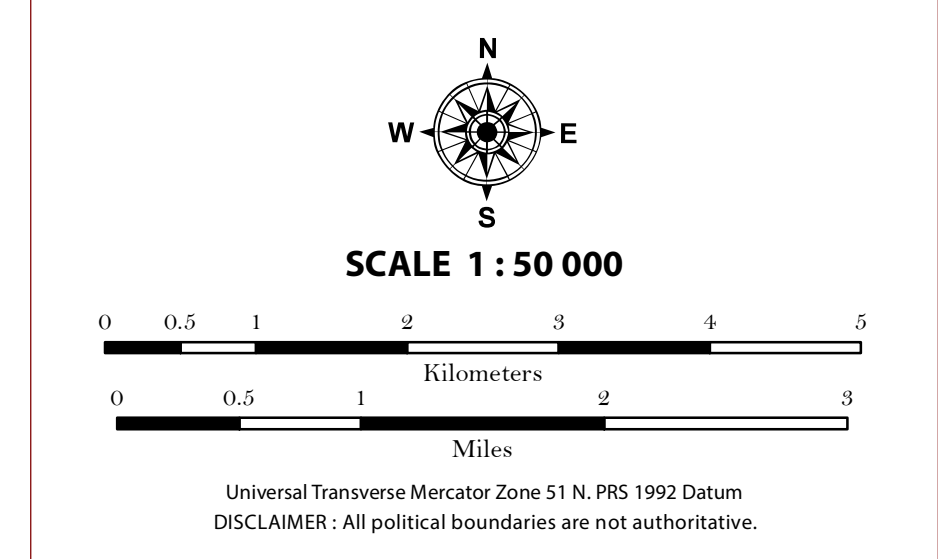
Map produced by the Geomatics and Soil Information Technology Division, Bureau of Soils and Water Management (BSWM). Users noting errors or omissions in this publication are requested to inform the Bureau of Soils and Water Management.

This publication is licensed under a Creative Commons Attribution 4.0 International License. Unless otherwise noted, copyright and any other intellectual property rights in this publication is owned by the Philippine Government. This publication should be attributed as:
 BSWM, 2019. Land Suitability Map Series for Rubber of the PROVINCE OF SULTAN KUDARAT (50,000 Scale). CC BY NC SA 4.0.



LAND SUITABILITY MAP RUBBER

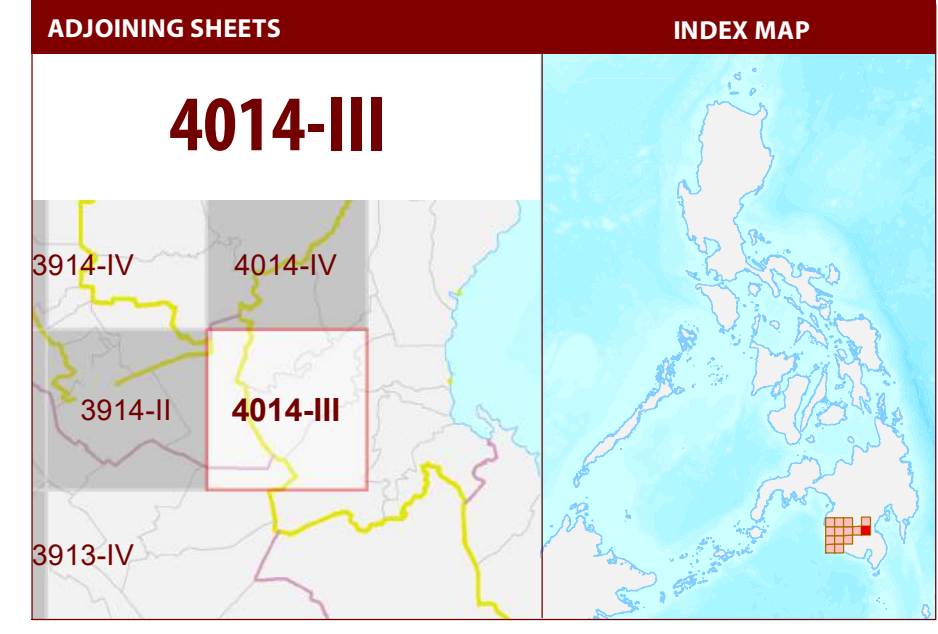
LAND RESOURCES EVALUATION AND SUITABILITY ASSESSMENT OF STRATEGIC PRODUCTION AREAS



LEGEND

- SUITABILITY CLASSES**
- S1 Highly Suitable** - Land having no significant limitations to sustained application of a given use, or only minor limitations that will not significantly reduce productivity or benefits and will not raise inputs above an acceptable level.
 - S2 Moderately Suitable** - Land having limitations which in aggregate are moderately severe for sustained application of a given use; the limitations will reduce productivity or benefits and increase required inputs to the extent that the overall advantage to be gained from the use, although still attractive, will be appreciably inferior to that expected on class S1 land.
 - S3 Marginally Suitable** - Land having limitations which in aggregate are severe for sustained application of a given use and will so reduce productivity or benefits, or increase required inputs, that this expenditure will be only marginally justified.
- Not Suitable/ Not Relevant**
- OTHER SIGNS**
- NGP Areas
 - Cacao
 - Land limitation
 - Land use

- CONVENTIONAL SIGNS**
- | | | |
|--------------|-----------------|-----------------------|
| ROADS | BOUNDARY | HYDROLOGY |
| Expressway | Region | Sea / Shoreline |
| Trunk line | Province | Lakes / Rivers |
| Primary | District | PLACES |
| Secondary | Municipality | ★ Capital City / City |
| Tertiary | Barangay | ● Capital Town / Town |
- LAND USE**
- Built-up
 - Fishpond
 - Mangrove



MISCELLANEOUS INFORMATION

SOURCES OF INFORMATION : Topographic information taken from NAMRIA Topographic Map at 1:50,000 scale. Land resources information from the Agricultural Land Management and Evaluation Division (ALMED), Soils Survey Division (SSD) and Laboratory Services Division (LSD) of BSWM. Rice areas obtained from the Land Use System (FAO, 2015) and Philippine Rice Information System (PRISM) (IRRI, 2015). Data analysis and compilation through the Land Resources Evaluation and Suitability Assessment of Strategic Production Areas for Major Commodities Project implemented by BSWM (2017).

Project Leader : BERNARDO B. PASCUA
GIS and Cartography : IRWIN K. SAMALCA

Funding Agency : Department of Agriculture - Bureau of Agricultural Research (DA-BAR)
Collaborating Agencies : Philippine Council on Agriculture and Fisheries (PCAF)
: Department of Agriculture and Fisheries - ARMM, Department of Agriculture Regional Field Office of Region IX, X, XI, XII and XIII (Caraga)
: Local Government Unit (LGU) of covered provinces and municipalities

Map produced by the Geomatics and Soil Information Technology Division, Bureau of Soils and Water Management (BSWM). Users noting errors or omissions in this publication are requested to inform the Bureau of Soils and Water Management.

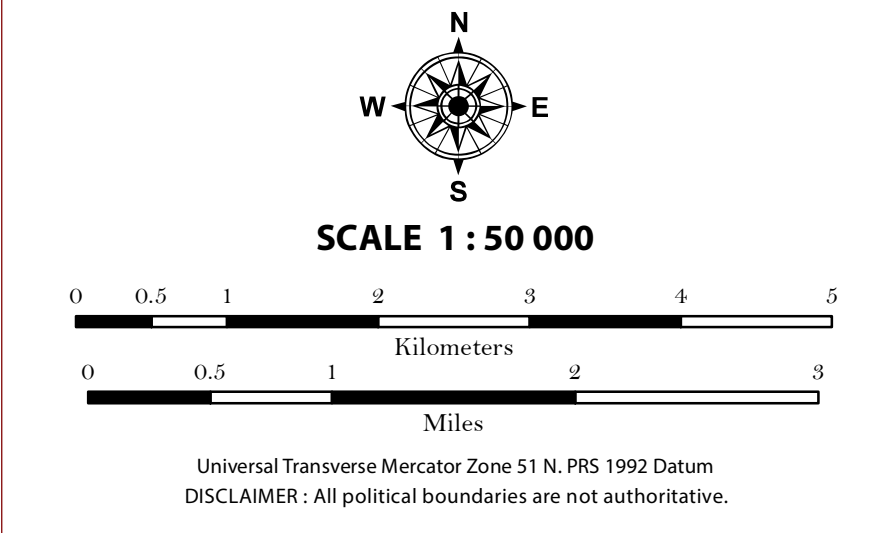
This publication is licensed under a Creative Commons Attribution 4.0 International License. Unless otherwise noted, copyright and any other intellectual property rights, in this publication is owned by the Philippine Government. This publication should be attributed as:
BSWM, 2019. Land Suitability Map Series for Rubber of the PROVINCE OF SULTAN KUDARAT (50,000 Scale). CC BY NC SA 4.0.

REPUBLIC OF THE PHILIPPINES
DEPARTMENT OF AGRICULTURE
BUREAU OF SOILS AND WATER MANAGEMENT
SRDC Bldg, Elliptical Road Cor. Visayas Avenue, Diliman, Quezon City 1101
Tel/Fax No.:(+632) 332-9534 E-mail: bswmcenter@da.gov.ph



LAND SUITABILITY MAP RUBBER

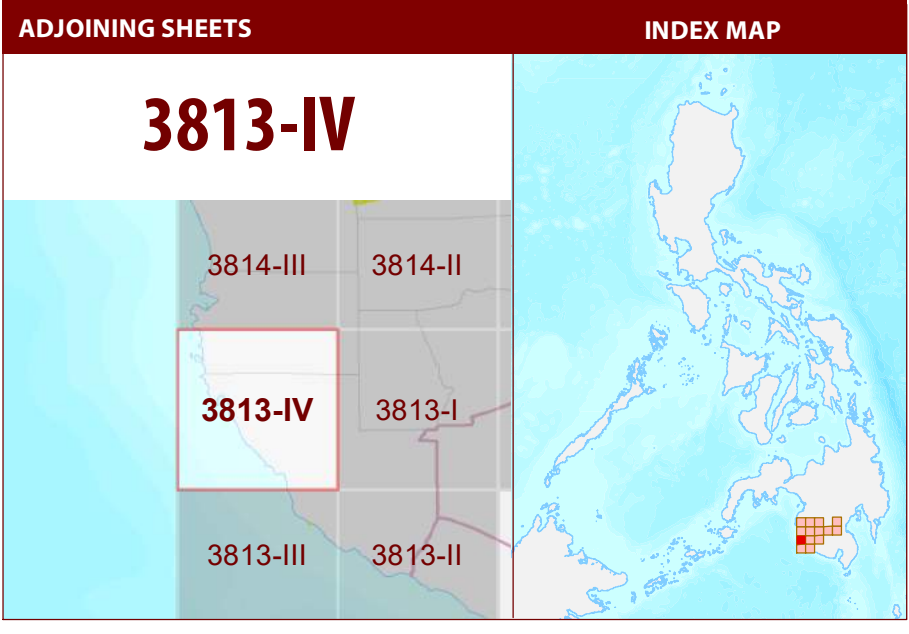
LAND RESOURCES EVALUATION AND SUITABILITY ASSESSMENT OF STRATEGIC PRODUCTION AREAS



LEGEND

- SUITABILITY CLASSES**
- S1 Highly Suitable** - Land having no significant limitations to sustained application of a given use, or only minor limitations that will not significantly reduce productivity or benefits and will not raise inputs above an acceptable level.
 - S2 Moderately Suitable** - Land having limitations which in aggregate are moderately severe for sustained application of a given use; the limitations will reduce productivity or benefits and increase required inputs to the extent that the overall advantage to be gained from the use, although still attractive, will be appreciably inferior to that expected on class S1 land.
 - S3 Marginally Suitable** - Land having limitations which in aggregate are severe for sustained application of a given use and will so reduce productivity or benefits, or increase required inputs, that this expenditure will be only marginally justified.
- Not Suitable/ Not Relevant**
- OTHER SIGNS**
- NGP Areas
 - Cacao
 - Land limitation
 - Land use

- CONVENTIONAL SIGNS**
- | | | |
|--------------|-----------------|-----------------------|
| ROADS | BOUNDARY | HYDROLOGY |
| Expressway | Region | Sea / Shoreline |
| Trunk line | Province | Lakes / Rivers |
| Primary | District | PLACES |
| Secondary | Municipality | ★ Capital City / City |
| Tertiary | Barangay | ● Capital Town / Town |
- LAND USE**
- Built-up
 - Fishpond
 - Mangrove



MISCELLANEOUS INFORMATION

SOURCES OF INFORMATION : Topographic information taken from NAMRIA Topographic Map at 1:50,000 scale. Land resources information from the Agricultural Land Management and Evaluation Division (ALMED), Soils Survey Division (SSD) and Laboratory Services Division (LSD) of BSWM. Rice areas obtained from the Land Use System (FAO, 2015) and Philippine Rice Information System (PRISM) (IRRI, 2015). Data analysis and compilation through the Land Resources Evaluation and Suitability Assessment of Strategic Production Areas for Major Commodities Project implemented by BSWM (2017).

Project Leader : BERNARDO B. PASCUA
GIS and Cartography : IRWIN K. SAMALCA

Funding Agency : Department of Agriculture - Bureau of Agricultural Research (DA-BAR)
Collaborating Agencies : Philippine Council on Agriculture and Fisheries (PCAF)
: Department of Agriculture and Fisheries - ARMM, Department of Agriculture Regional Field Office of Region IX, X, XII and XIII (Caraga)
: Local Government Unit (LGU) of covered provinces and municipalities

Map produced by the Geomatics and Soil Information Technology Division, Bureau of Soils and Water Management (BSWM).
Users noting errors or omissions in this publication are requested to inform the Bureau of Soils and Water Management.

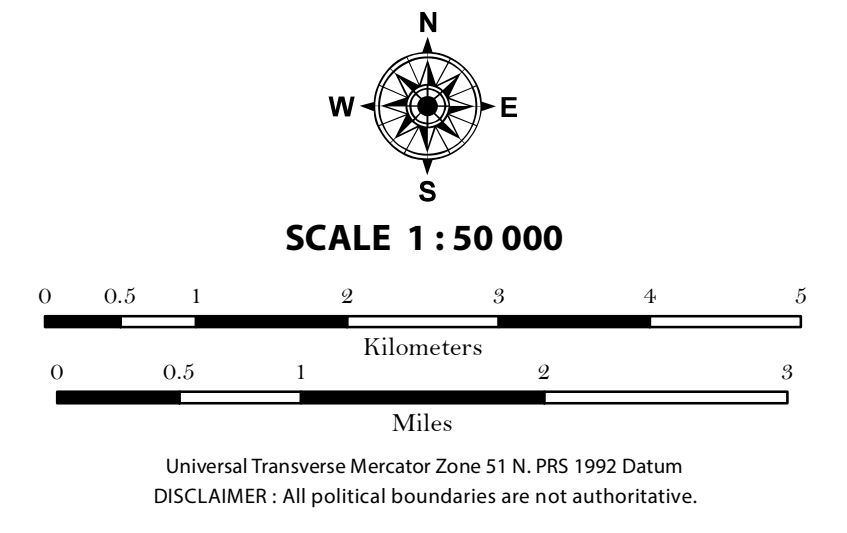
This publication is licensed under a Creative Commons Attribution 4.0 International License. Unless otherwise noted, copyright and any other intellectual property rights in this publication is owned by the Philippine Government. This publication should be attributed as:
BSWM, 2019. Land Suitability Map Series for Rubber of the PROVINCE OF SULTAN KUDARAT (50,000 Scale). CC BY NC SA 4.0.

REPUBLIC OF THE PHILIPPINES
DEPARTMENT OF AGRICULTURE
BUREAU OF SOILS AND WATER MANAGEMENT
SRDC Bldg, Elliptical Road Cor. Visayas Avenue, Diliman, Quezon City 1101
Tel/Fax No. : (+632) 332-9534 E-mail : bswmcenter@da.gov.ph



LAND SUITABILITY MAP RUBBER

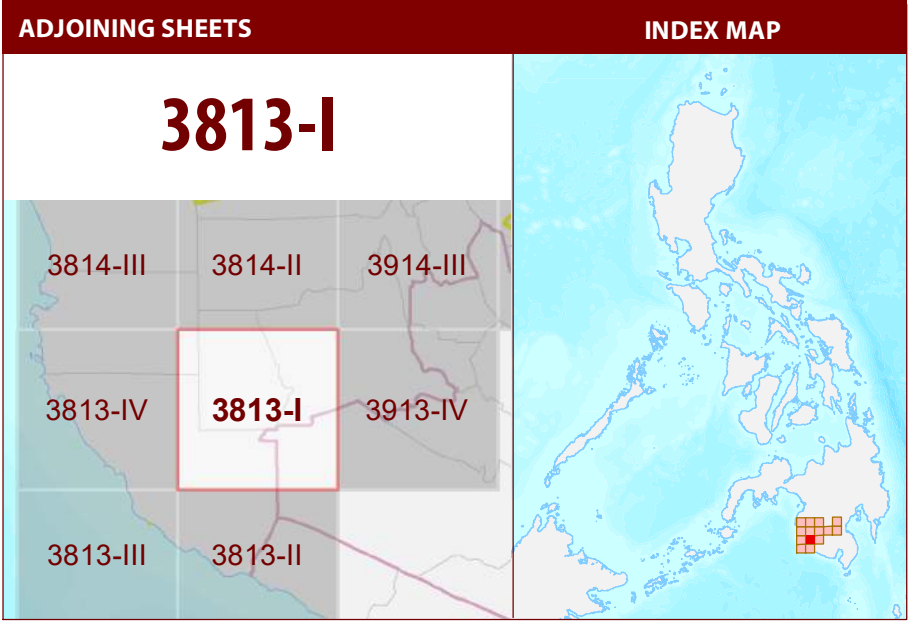
LAND RESOURCES EVALUATION AND SUITABILITY ASSESSMENT OF STRATEGIC PRODUCTION AREAS



LEGEND

- SUITABILITY CLASSES**
- S1 Highly Suitable** - Land having no significant limitations to sustained application of a given use, or only minor limitations that will not significantly reduce productivity or benefits and will not raise inputs above an acceptable level.
 - S2 Moderately Suitable** - Land having limitations which in aggregate are moderately severe for sustained application of a given use; the limitations will reduce productivity or benefits and increase required inputs to the extent that the overall advantage to be gained from the use, although still attractive, will be appreciably inferior to that expected on class S1 land.
 - S3 Marginally Suitable** - Land having limitations which in aggregate are severe for sustained application of a given use and will so reduce productivity or benefits, or increase required inputs, that this expenditure will be only marginally justified.
 - Not Suitable/ Not Relevant**
- OTHER SIGNS**
- NGP Areas
 - Cacao
 - Land limitation
 - Land use

- CONVENTIONAL SIGNS**
- | | | |
|--------------|-----------------|-----------------------|
| ROADS | BOUNDARY | HYDROLOGY |
| Expressway | Region | Sea / Shoreline |
| Trunk line | Province | Lakes / Rivers |
| Primary | District | PLACES |
| Secondary | Municipality | ★ Capital City / City |
| Tertiary | Barangay | ● Capital Town / Town |
- LAND USE**
- Built-up
 - Fishpond
 - Mangrove



MISCELLANEOUS INFORMATION

SOURCES OF INFORMATION: Topographic information taken from NAMRIA Topographic Map at 1:50,000 scale. Land resources information from the Agricultural Land Management and Evaluation Division (ALMED), Soils Survey Division (SSD) and Laboratory Services Division (LSD) of BSWM. Rice areas obtained from the Land Use System (FAO, 2015) and Philippine Rice Information System (PRISM) (IRRI, 2015). Data analysis and compilation through the Land Resources Evaluation and Suitability Assessment of Strategic Production Areas for Major Commodities Project implemented by BSWM (2017).

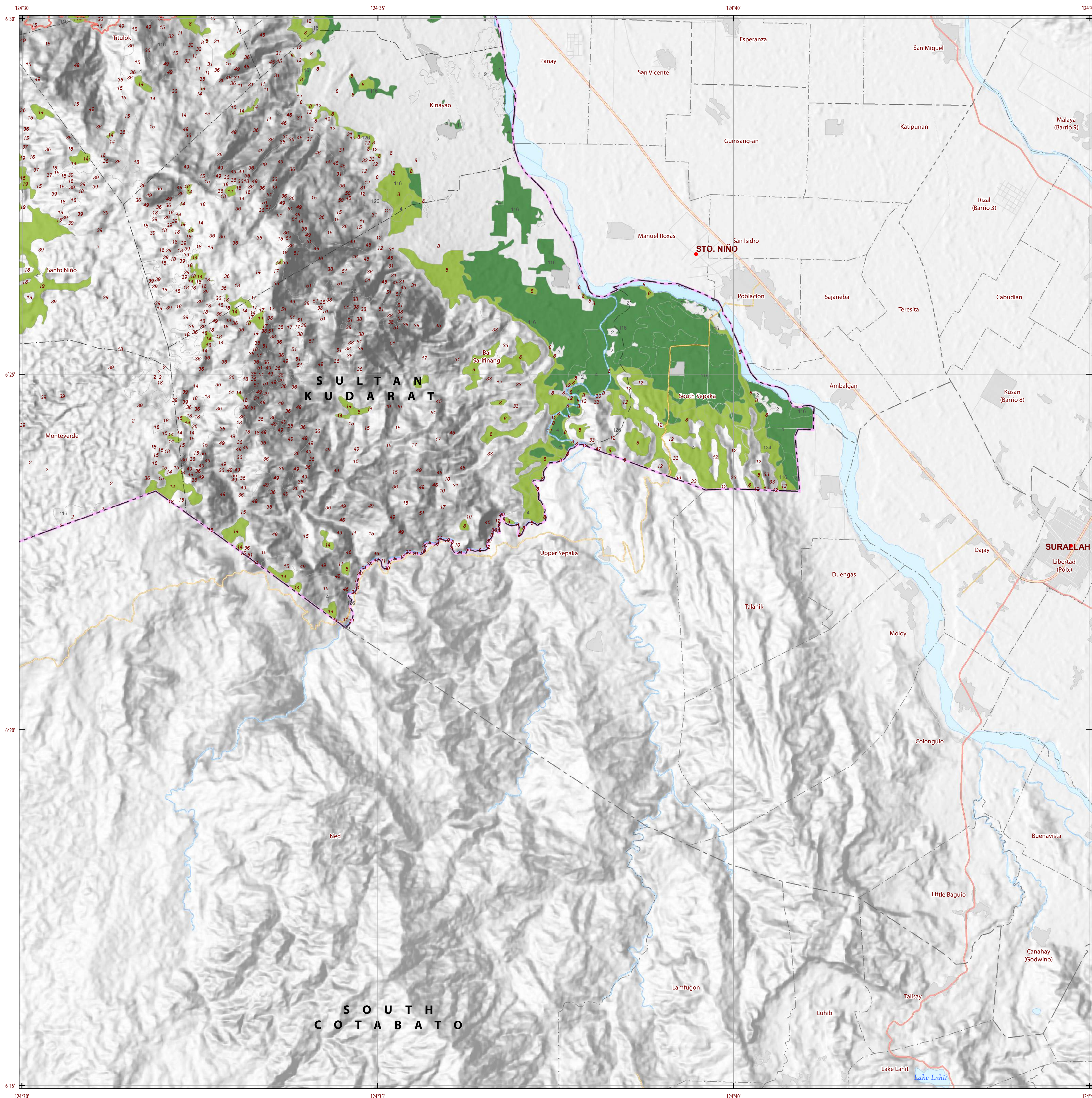
Project Leader : BERNARDO B. PASALUA
 GIS and Cartography : IRWIN K. SAMALCA

Funding Agency : Department of Agriculture - Bureau of Agricultural Research (DA-BAR)
 Collaborating Agencies : Philippine Council on Agriculture and Fisheries (PCAF)
 : Department of Agriculture and Fisheries - ARMM, Department of Agriculture Regional Field Office of Region IX, X, XI, XII and XIII (Caraga)
 : Local Government Unit (LGU) of covered provinces and municipalities

Map produced by the Geomatics and Soil Information Technology Division, Bureau of Soils and Water Management (BSWM). Users noting errors or omissions in this publication are requested to inform the Bureau of Soils and Water Management.

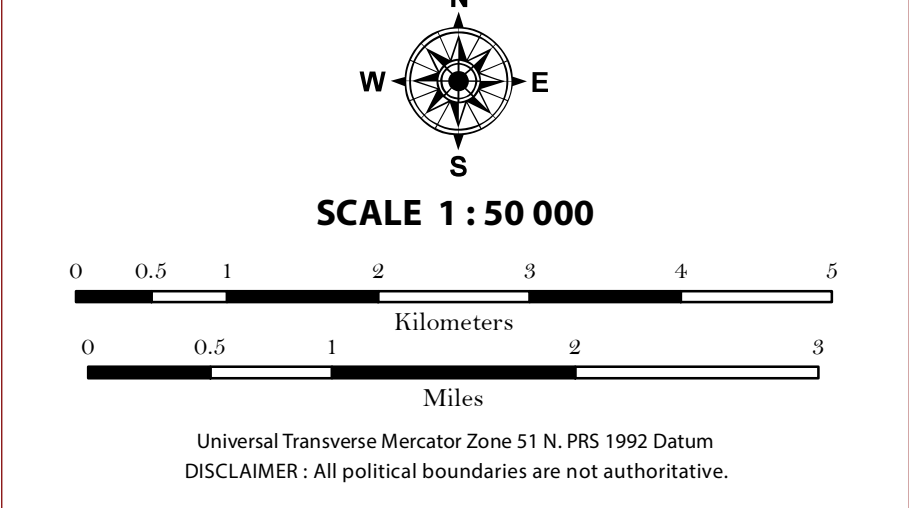
This publication is licensed under a Creative Commons Attribution 4.0 International License. Unless otherwise noted, copyright and any other intellectual property rights in this publication is owned by the Philippine Government. This publication should be attributed as:
 BSWM, 2019. Land Suitability Map Series for Rubber of the PROVINCE OF SULTAN KUDARAT (50,000 Scale). CC BY-NC-SA 4.0.

REPUBLIC OF THE PHILIPPINES
 DEPARTMENT OF AGRICULTURE
 BUREAU OF SOILS AND WATER MANAGEMENT
 SRDC Bldg., Elliptical Road Cor. Visayas Avenue, Diliman, Quezon City 1101
 Tel/Fax No.: (+632) 332-9534 E-mail: bswm@center.dia.gov.ph



LAND SUITABILITY MAP RUBBER

LAND RESOURCES EVALUATION AND SUITABILITY ASSESSMENT OF STRATEGIC PRODUCTION AREAS



LEGEND

SUITABILITY CLASSES

- S1 Highly Suitable** - Land having no significant limitations to sustained application of a given use, or only minor limitations that will not significantly reduce productivity or benefits and will not raise inputs above an acceptable level.
- S2 Moderately Suitable** - Land having limitations which in aggregate are moderately severe for sustained application of a given use; the limitations will reduce productivity or benefits and increase required inputs to the extent that the overall advantage to be gained from the use, although still attractive, will be appreciably inferior to that expected on class S1 land.
- S3 Marginally Suitable** - Land having limitations which in aggregate are severe for sustained application of a given use and will so reduce productivity or benefits, or increase required inputs, that this expenditure will be only marginally justified.
- Not Suitable/ Not Relevant**

OTHER SIGNS

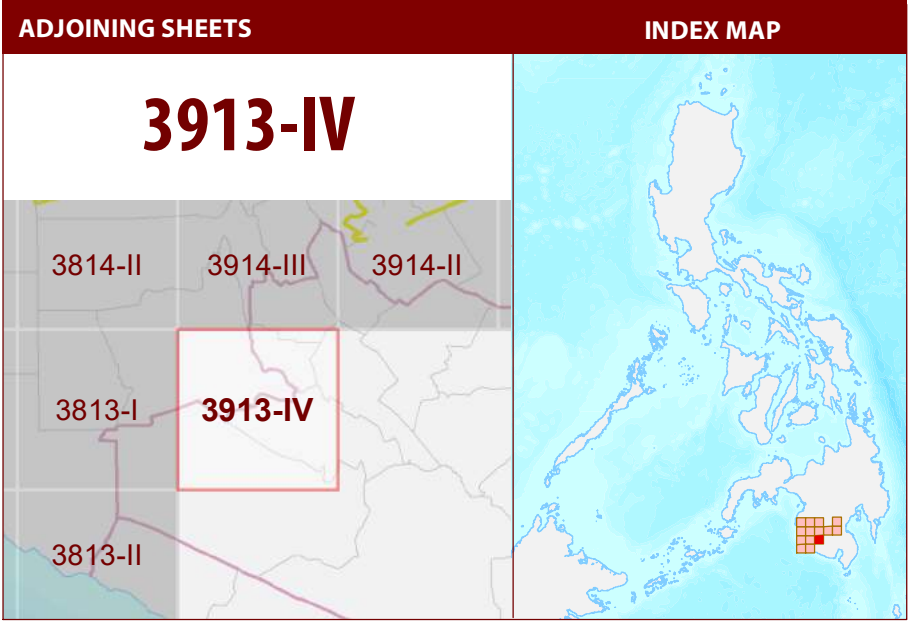
- NGP Areas
- Cacao
- Land limitation
- Land use

CONVENTIONAL SIGNS

ROADS	BOUNDARY	HYDROLOGY
Expressway	Region	Sea / Shoreline
Trunk line	Province	Lakes / Rivers
Primary	District	PLACES
Secondary	Municipality	★ Capital City / City
Tertiary	Barangay	● Capital Town / Town

LAND USE

- Built-up
- Fishpond
- Mangrove



MISCELLANEOUS INFORMATION

SOURCES OF INFORMATION: Topographic information taken from NAMRIA Topographic Map at 1:50,000 scale. Land resources information from the Agricultural Land Management and Evaluation Division (ALMED), Soils Survey Division (SSD) and Laboratory Services Division (LSD) of BSWM. Rice areas obtained from the Land Use System (FAO, 2015) and Philippine Rice Information System (PRISM) (IRRI, 2015). Data analysis and compilation through the Land Resources Evaluation and Suitability Assessment of Strategic Production Areas for Major Commodities Project implemented by BSWM (2017).

Project Leader : BERNARDO B. PASCUA
 GIS and Cartography : IRWIN K. SAMALCA

Funding Agency : Department of Agriculture - Bureau of Agricultural Research (DA-BAR)
 Collaborating Agencies : Philippine Council on Agriculture and Fisheries (PCAF)
 : Department of Agriculture and Fisheries - ARMM, Department of Agriculture Regional Field Office of Region IX, X, XI, XII and XIII (Caraga)
 : Local Government Unit (LGU) of covered provinces and municipalities

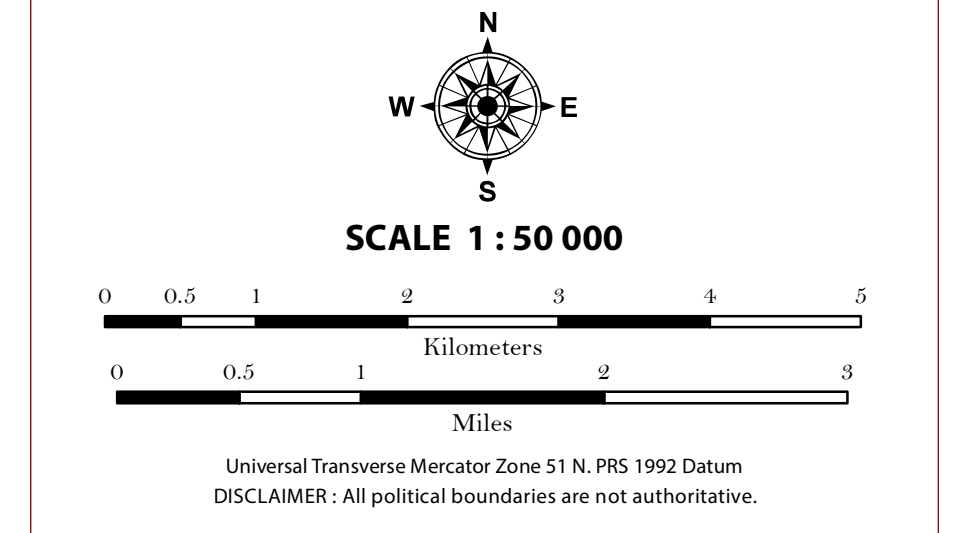
Map produced by the Geomatics and Soil Information Technology Division, Bureau of Soils and Water Management (BSWM).
 Users noting errors or omissions in this publication are requested to inform the Bureau of Soils and Water Management.

This publication is licensed under a Creative Commons Attribution 4.0 International License. Unless otherwise noted, copyright and any other intellectual property rights, in this publication is owned by the Philippine Government. This publication should be attributed as:
 BSWM, 2019. Land Suitability Map Series for Rubber of the PROVINCE OF SULTAN KUDARAT (50,000 Scale). CC BY NC SA 4.0.



LAND SUITABILITY MAP RUBBER

LAND RESOURCES EVALUATION AND SUITABILITY ASSESSMENT OF STRATEGIC PRODUCTION AREAS



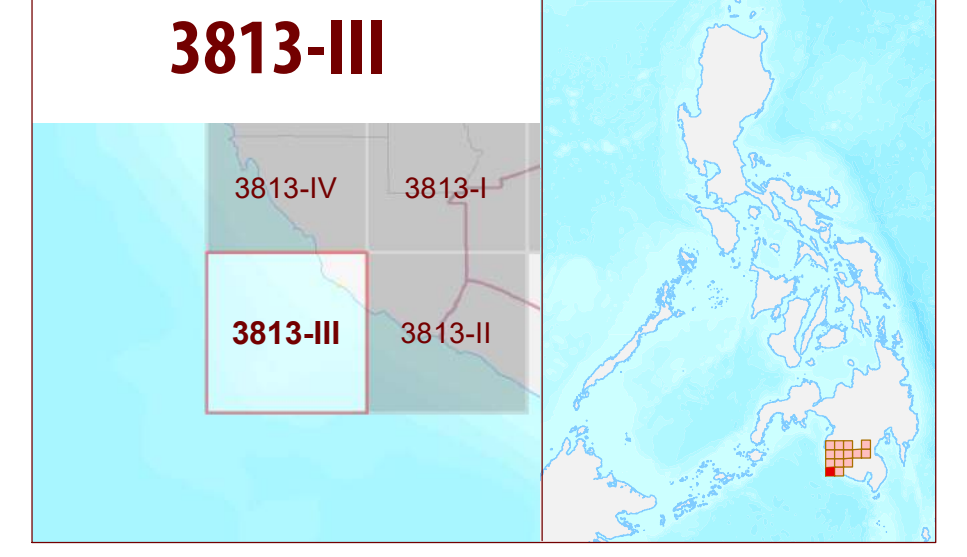
LEGEND

- SUITABILITY CLASSES**
- S1 Highly Suitable** - Land having no significant limitations to sustained application of a given use, or only minor limitations that will not significantly reduce productivity or benefits and will not raise inputs above an acceptable level.
 - S2 Moderately Suitable** - Land having limitations which in aggregate are moderately severe for sustained application of a given use; the limitations will reduce productivity or benefits and increase required inputs to the extent that the overall advantage to be gained from the use, although still attractive, will be appreciably inferior to that expected on class S1 land.
 - S3 Marginally Suitable** - Land having limitations which in aggregate are severe for sustained application of a given use and will so reduce productivity or benefits, or increase required inputs, that this expenditure will be only marginally justified.
- Not Suitable/ Not Relevant**
- OTHER SIGNS**
- NGP Areas
 - Cacao
 - Land limitation
 - Land use

CONVENTIONAL SIGNS

- | | | |
|-----------------|-----------------|---------------------|
| ROADS | BOUNDARY | HYDROLOGY |
| Expressway | Region | Sea / Shoreline |
| Trunk line | Province | Lakes / Rivers |
| Primary | District | PLACES |
| Secondary | Municipality | Capital City / City |
| Tertiary | Barangay | Capital Town / Town |
| LAND USE | | |
| Built-up | Fishpond | Mangrove |

ADJOINING SHEETS



MISCELLANEOUS INFORMATION

SOURCES OF INFORMATION : Topographic information taken from NAMRIA Topographic Map at 1:50,000 scale. Land resources information from the Agricultural Land Management and Evaluation Division (ALMED), Soils Survey Division (SSD) and Laboratory Services Division (LSD) of BSWM. Rice areas obtained from the Land Use System (FAO, 2015) and Philippine Rice Information System (PRISM) (IRRI, 2015). Data analysis and compilation through the **Land Resources Evaluation and Suitability Assessment of Strategic Production Areas for Major Commodities Project** implemented by BSWM (2017).

Project Leader : BERNARDO B. PASCUA
 GIS and Cartography : IRWIN K. SAMALCA

Funding Agency : Department of Agriculture - Bureau of Agricultural Research (DA-BAR)
 Collaborating Agencies : Philippine Council on Agriculture and Fisheries (PCAF)
 : Department of Agriculture and Fisheries - ARMM, Department of Agriculture Regional Field Office of Region IX, X, XI, XII and XIII (Caraga)
 : Local Government Unit (LGU) of covered provinces and municipalities

Map produced by the Geomatics and Soil Information Technology Division, Bureau of Soils and Water Management (BSWM).
 Users noting errors or omissions in this publication are requested to inform the Bureau of Soils and Water Management.

This publication is licensed under a Creative Commons Attribution 4.0 International License. Unless otherwise noted, copyright and any other intellectual property rights, in this publication is owned by the Philippine Government. This publication should be attributed as:
 BSWM, 2019. Land Suitability Map Series for Rubber of the PROVINCE OF SULTAN KUDARAT (50,000 Scale) - CC BY NC SA 4.0.

REPUBLIC OF THE PHILIPPINES
 DEPARTMENT OF AGRICULTURE
 BUREAU OF SOILS AND WATER MANAGEMENT
 SRDC Bldg, Elliptical Road Cor. Visayas Avenue, Diliman, Quezon City 1101
 Tel/Fax No.: +(632) 332-9534 E-mail: bswmcenter@da.gov.ph



LAND SUITABILITY MAP RUBBER

**LAND RESOURCES EVALUATION AND SUITABILITY
ASSESSMENT OF STRATEGIC PRODUCTION AREAS**

Universal Transverse Mercator Zone 51 N, PRS 1992 Datum
DISCLAIMER: All political boundaries are not authoritative.

LEGEND

SUITABILITY CLASSES

- S1 Highly Suitable** - Land having no significant limitations to sustained application of a given use, or only minor limitations that will not significantly reduce productivity or benefits and will not raise inputs above an acceptable level.
- S2 Moderately Suitable** - Land having limitations which in aggregate are moderately severe for sustained application of a given use; the limitations will reduce productivity or benefits and increase required inputs to the extent that the overall advantage to be gained from the use, although still attractive, will be appreciably inferior to that expected on class S1 land.
- S3 Marginally Suitable** - Land having limitations which in aggregate are severe for sustained application of a given use and will so reduce productivity or benefits, or increase required inputs, that this expenditure will be only marginally justified.

Not Suitable/ Not Relevant

OTHER SIGNS

- NGP Areas
- Cacao
- Land limitation
- Land use

CONVENTIONAL SIGNS

ROADS	BOUNDARY	HYDROLOGY
Expressway	Region	Sea / Shoreline
Trunk line	Province	Lakes / Rivers
Primary	District	PLACES
Secondary	Municipality	Capital City / City
Tertiary	Barangay	Capital Town / Town
LAND USE		
Built-up	Fishpond	Mangrove

ADJOINING SHEETS

3813-II

3813-IV, 3813-I, 3913-IV, 3813-III

INDEX MAP

MISCELLANEOUS INFORMATION

SOURCES OF INFORMATION : Topographic information taken from NAMRIA Topographic Map at 1:50,000 scale. Land resources information from the Agricultural Land Management and Evaluation Division (ALMED), Soils Survey Division (SSD) and Laboratory Services Division (LSD) of BSWM. Rice areas obtained from the Land Use System (FAO, 2015) and Philippine Rice Information System (PRISM) (IRRI, 2015). Data analysis and compilation through the Land Resources Evaluation and Suitability Assessment of Strategic Production Areas for Major Commodities Project implemented by BSWM (2017).

Project Leader : BERNARDO B. PASCUA
GIS and Cartography : IRWIN K. SAMALCA

Funding Agency : Department of Agriculture - Bureau of Agricultural Research (DA-BAR)
Collaborating Agencies : Philippine Council on Agriculture and Fisheries (PCAF)
: Department of Agriculture and Fisheries - ARMM, Department of Agriculture Regional Field Office of Region IX, X, XI, XII and XIII (Caraga)
: Local Government Unit (LGU) of covered provinces and municipalities

Map produced by the Geomatics and Soil Information Technology Division, Bureau of Soils and Water Management (BSWM).
Users noting errors or omissions in this publication are requested to inform the Bureau of Soils and Water Management.

This publication is licensed under a Creative Commons Attribution 4.0 International License. Unless otherwise noted, copyright and any other intellectual property rights, in this publication is owned by the Philippine Government. This publication should be attributed as:
BSWM, 2019. Land Suitability Map Series for Rubber of the PROVINCE OF SULTAN KUDARAT (50,000 Scale). CC BY-NC-SA 4.0.

**REPUBLIC OF THE PHILIPPINES
DEPARTMENT OF AGRICULTURE
BUREAU OF SOILS AND WATER MANAGEMENT**
SRDC Bldg, Elliptical Road Cor. Visayas Avenue, Diliman, Quezon City 1101
Tel/Fax No.: (+632) 332-9534 E-mail: bswmcenter@da.gov.ph

PROVINCE OF SULTAN KUDARAT Sheet 14 of 14 Sheet No. 3813-II