

LAND SUITABILITY MAP

CASSAVA

**LAND RESOURCES EVALUATION AND SUITABILITY
ASSESSMENT OF STRATEGIC PRODUCTION AREAS**

PROVINCE OF ZAMBOANGA DEL SUR

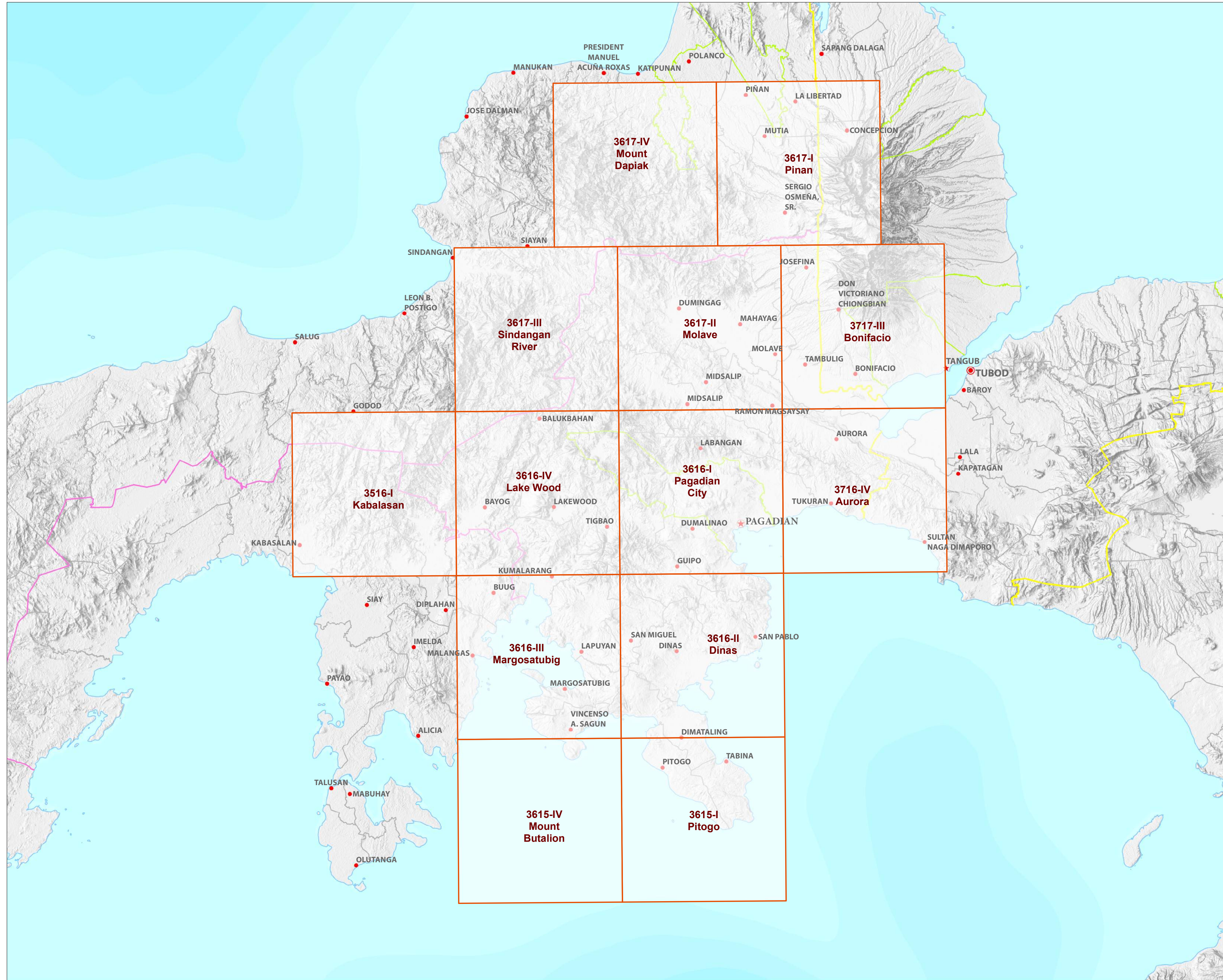


REPUBLIC OF THE PHILIPPINES
DEPARTMENT OF AGRICULTURE
BUREAU OF SOILS AND WATER MANAGEMENT

SRDC Bldg., Elliptical Road Cor. Visayas Avenue, Diliman, Quezon City 1101
Tel/Fax No.: (+632) 332-9534 E-mail: bswmclientcenter@yahoo.com

MAP INDEX

LAND RESOURCES EVALUATION AND SUITABILITY ASSESSMENT OF STRATEGIC PRODUCTION AREAS PROVINCE OF ZAMBOANGA DEL SUR



LEGEND

Places

- ★ Capital City
- ★ City
- Capital Town
- Town

Administrative Boundary

- Regional
- Provincial
- City
- Municipal

Map Index

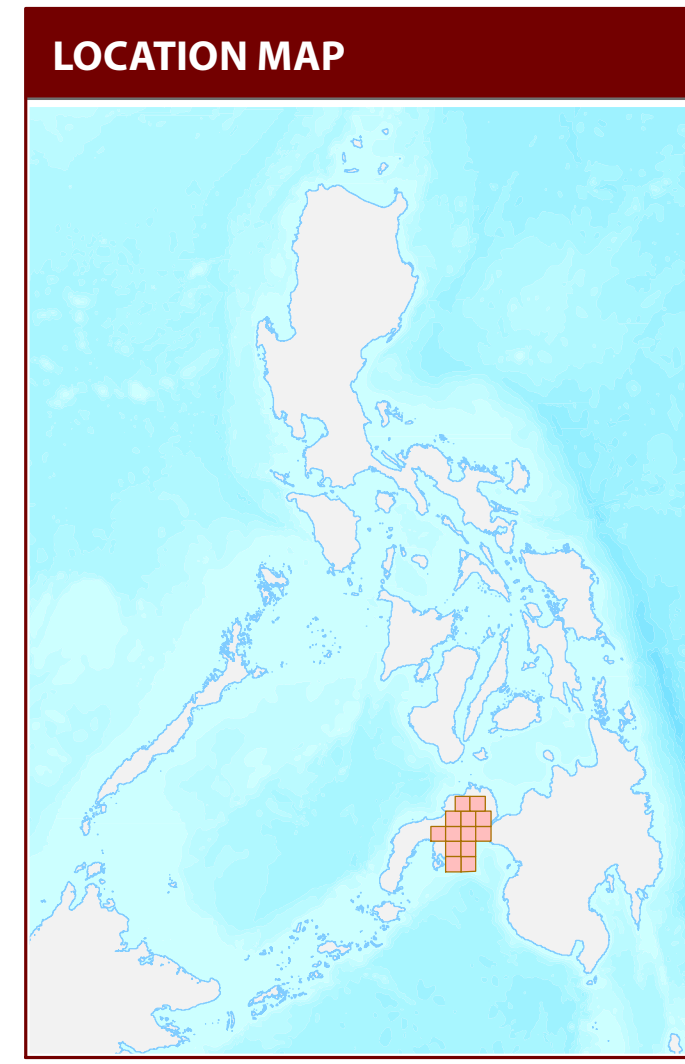
- Index grid

Topographic Relief

- Topographic Relief

Bathymetry

- Bathymetry



MISCELLANEOUS INFORMATION

Land suitability information produced by the Bureau of Soils and Water Management (BSWM) through the Land Resources Evaluation and Suitability Assessment of Strategic Production Areas for Major Commodities Project duly supported by the Philippine Council on Agriculture and Fisheries (PCAFA) and funded by the Bureau of Agricultural Research (BAR).

Map produced by the Geomatics and Soil Information Technology Division, Bureau of Soils and Water Management (BSWM).

Users noting errors or omissions in this publication are requested to inform the Bureau of Soils and Water Management.

Unless otherwise noted, copyright and any other intellectual property rights is owned by the Philippine Government.

REPUBLIC OF THE PHILIPPINES
DEPARTMENT OF AGRICULTURE
BUREAU OF SOILS AND WATER MANAGEMENT

SRDC Bldg., Elliptical Road Cor. Visayas Avenue,
Diliman, Quezon City 1101 Philippines
Tel/Fax No. : (432) 332-9234 E-mail: bswwmclientcenter@yahoo.com

LAND SUITABILITY MAP FOR CASSAVA

LAND RESOURCES EVALUATION AND SUITABILITY ASSESSMENT OF STRATEGIC PRODUCTION AREAS ZAMBOANGA DEL SUR, REGION IX

EXTENT OF SUITABILITY FOR CASSAVA PRODUCTION BY MUNICIPALITY

MUNICIPALITY	EXISTING CASSAVA (Ha)			TOTAL EXISTING AREA (Ha)	EXPANSION AREA (Ha)						CONFLICT RESOLUTION AREA (Ha)						TOTAL POTENTIAL EXPANSION AREA (Ha)		
	S1	S2	S3		Coconut		Shrubland, unmanaged*		Grassland, unmanaged*		Corn		Mango		Banana			Other crops	
					S1	S2	S1	S2	S1	S2	S1	S2	S1	S2	S1	S2		S1	S2
AURORA	-	-	-	-	3,053	3,852	6	100	28	269	460	701	-	-	-	-	-	-	8,469
BAYOG	-	-	-	-	79	587	29	206	337	3,123	650	420	-	-	-	-	-	-	5,430
DIMATALING	-	-	-	-	1,915	3,636	60	227	-	-	257	185	7	1	-	-	-	6,288	
DINAS	-	-	-	-	3,372	5,143	23	218	85	59	533	852	3	3	-	-	2	10,296	
DUMALINAO	-	-	-	-	687	2,907	-	9	16	387	873	1,983	-	-	-	-	-	6,862	
DUMINGAG	-	-	-	-	25	257	12	121	549	7,255	1,051	176	-	-	-	-	-	9,447	
GUIPOS	-	-	-	-	118	835	-	8	44	386	780	1,600	-	-	-	-	-	3,771	
JOSEFINA	-	-	-	-	-	692	-	34	-	24	42	703	-	-	-	-	-	1,495	
KUMALARANG	-	-	-	-	361	1,679	1	9	1	128	474	523	-	-	-	-	-	3,176	
LABANGAN	-	-	-	-	153	51	-	18	288	1,352	2,397	223	-	-	-	-	1	4,483	
LAKWOOD	-	-	-	-	214	1,994	-	127	97	741	152	388	-	-	-	-	-	3,717	
LAPUYAN	-	-	-	-	1,423	5,938	66	347	26	164	532	624	-	-	-	-	-	9,120	
MAHAYAG	-	-	-	-	1,435	1,026	75	52	249	423	1,553	1,096	-	-	6	2	2	5,920	
MARGOSATUBIG	-	-	-	-	801	3,484	19	171	4	20	157	357	-	-	-	-	-	5,014	
MIDSALIP	-	-	-	-	6	63	83	72	547	3,599	589	307	-	-	-	-	-	5,265	
MOLAVE	-	-	-	-	488	1,389	77	195	-	1	965	2,999	-	-	-	-	-	6,114	
PAGADIAN CITY	-	-	-	-	1,242	3,048	34	173	185	808	1,810	2,895	-	-	-	-	-	10,196	
PITOGO	-	-	-	-	2,133	3,590	-	-	-	-	194	84	-	-	-	-	-	6,001	
RAMON MAGSAYSAY	-	-	-	-	1,479	2,613	6	43	235	209	646	705	-	-	-	-	-	5,938	
SAN MIGUEL	-	-	-	-	1,147	2,905	4	109	12	124	420	767	-	-	-	-	-	5,487	
SAN PABLO	-	-	-	-	761	3,763	-	-	-	28	332	659	-	2	-	-	-	5,545	
SOMINOT	-	-	-	-	254	1,468	12	56	617	2,022	159	482	-	-	-	-	-	5,070	
TABINA	-	-	-	-	746	4,945	-	-	-	-	8	65	-	-	-	2	5	5,771	
TAMBULIG	-	-	-	-	172	2,518	-	1	20	46	1,334	954	-	-	-	-	-	5,046	
TIGBAO	-	-	-	-	136	1,523	-	71	3	154	363	806	1	0	-	-	1	3,061	
TUKURAN	-	-	-	-	84	363	7	100	536	3,110	623	421	-	-	3	-	-	5,245	
VINCENZO A. SAGUN	-	-	-	-	904	3,381	-	-	-	25	68	81	-	1	-	-	-	4,460	
TOTAL	-	-	-	-	23,189	63,651	514	2,468	3,878	24,458	17,423	21,056	10	7	9	4	13	156,688	

Note: Delivery of cassava planting materials must be started on the onset of rainy season.
*establishment of shade trees prior to planting of cassava.

AGRONOMIC REQUIREMENT OF CASSAVA PRODUCTION

LAND UTILIZATION TYPE	SUITABILITY RATING	SLOPE (%)	SOIL DEPTH (cm)	SOIL TEXTURE	SOIL DRAINAGE	SOIL REACTION (pH)	INHERENT FERTILITY	FLOODING CLASS	EROSION CLASS	ROCK OUTCROPS	ELEVATION (mas)	ANNUAL RAINFALL (mm)	CLIMATIC TYPE
Cassava	S1	<8	>50	FSL, L, SIL, CL, SICL, SCL, SC, SIC, C	WD, MWD	5.6 - 7.2	high	none-slight	none-slight	none-few	<500	1000-2000	I, II, III, IV
	S2	8 - 18	30 - 50	SL, HC	SPD, PD	5.1 - 5.5 7.3 - 7.8	medium	moderate	moderate	common	500-1500	2001-4500	II
	S3	18 - 30	<30	S, LS, CSL	VPD, ED	<5.0 - > 7.9	low	severe	severe	many	>1500	<1000 >4500	

SLOPE (%)

0 - 3 - level to gently sloping
3 - 8 - gently sloping to undulating
8 - 18 - undulating to rolling
18 - 30 - rolling to moderately steep
30 - 50 - steep
> 50 - very steep

SOIL DRAINAGE

ED - excessively drained
WD - well drained
MWD - moderately well drained
SPD - somewhat poorly drained
PD - poorly drained
VPD - very poorly drained

SOIL REACTION (pH)

< 4.5 - extremely acid
4.5 - 5.0 - very strongly acid
5.1 - 5.5 - strongly acid
5.6 - 6.0 - medium acid
6.1 - 6.5 - slightly acid
6.6 - 7.2 - neutral
7.3 - 7.8 - mildly alkaline
7.9 - 8.4 - moderately alkaline
> 8.5 - strongly alkaline

SOIL TEXTURE

Coarse
S - sand
LS - loamy sand
CSL - coarse sandy loam
SL - sandy loam
Medium
FSL - fine sandy loam
L - loam
SIL - silt loam
CL - clay loam
SICL - silty clay loam
SCL - sandy clay loam

Fine
SC - sandy clay
SIC - silty clay
C - clay
HC - heavy clay

SOIL DEPTH (cm)

0 - 30 - very shallow
30 - 50 - shallow
50 - 100 - moderately deep
> 100 - deep to very deep

SURFACE IMPEDIMENT

ROCK OUTCROPS
< 10% - none - few
10 - 30% - common
> 30% - many

LAND LIMITATIONS DESCRIPTION AND COMBINATIONS

ELEVATION

EI2 - 500 - 1000m or 2000 - 2500m
EI3 - < 500m or > 2500m

SOIL DRAINAGE

D2 - Somewhat poorly drained to poorly drained
D3 - Very poorly drained or excessively drained

SOIL DEPTH

Sh2 - Shallow to moderately deep (30 - 100cm)
Sh3 - Very shallow (< 30cm)

SOIL EROSION

E2 - Moderate erosion
E3 - Severe erosion

SLOPE/TOPOGRAPHY

T2 - Undulating to moderately steep
T3 - Steep to very steep

SOIL TEXTURE

Tc - Coarse texture

ROCK OUTCROPS

Rc2 - Common
Rc3 - Many

FLOODING

F2 - Moderate seasonal flooding
F3 - Severe seasonal flooding

CODE	LIMITATION	CODE	LIMITATION	CODE	LIMITATION	CODE	LIMITATION	CODE	LIMITATION
1	EI2	11	T2-EI2-E3-Sh2-Rc3	21	T3-E3-Rc3	31	T3-EI2-E3-Sh3-Rc2	41	T3-EI2-E3-Sh3-Rc3
2	EI2-Rc2	12	T2-EI2-Rc2	22	T3-E3-Sh2-Rc2	32	T3-EI2-E3-Sh3-Rc3	42	T3-EI3
3	EI2-Sh2-Rc2	13	T2-EI2-Sh2-Rc2	23	T3-E3-Sh2-Rc3	33	T3-EI3-E3-Sh3-Rc3		
4	F2-D2	14	T2-EI2-Sh2-Rc3	24	T3-E3-Sh3-Rc2	34	T3-F2-D2		
5	F2-Tc	15	T2-F2-D2	25	T3-E3-Sh3-Rc3	35	T3-F3-D2		
6	F3-D2	16	T2-F3-D2	26	T3-EI2	36	T3		
7	Sh2-Rc2	17	T2-Sh2-Rc2	27	T3-EI2-E3	37	T3-E3		
8	T2	18	T3	28	T3-EI2-E3-Rc2	38	T3-E3-Sh3-Rc3		
9	T2-E2-Sh2-Rc2	19	T3-E3	29	T3-EI2-E3-Sh2-Rc2	39	T3-EI2		
10	T2-EI2	20	T3-E3-Rc2	30	T3-EI2-E3-Sh2-Rc3	40	T3-EI2-E3		

CODE	LANDUSE	CODE	LANDUSE
4	Corn	131	Ipil ipil
47	Vegetable	134	Shrubs, unmanaged
81	Coffee	137	Rubber
82	Cacao		
85	Mango		
87	Jackfruit		
91	Banana		
105	Fruit trees, mixed		
116	Coconut		
126	Grassland		

SUITABILITY CLASSES:

Highly Suitable (S1)
Land having no significant limitation to sustained application of a given use, or only minor limitations that will not significantly reduce productivity or benefits and will not raise inputs above an acceptable level.

Moderately Suitable (S2)
Land having limitation which in aggregate are moderately severe for sustained application of a given use; the limitation will reduce productivity or benefits and increase required inputs to the extent that the overall advantage to be gained from the use, although still attractive, will be appreciably inferior to that expected on class S1 land.

Marginally Suitable (S3)
Land having limitations which in aggregate are severe for sustained application of a given use and will so reduce productivity or benefits, or increase required inputs, that this expenditure will be only marginally justified.

Not Suitable / Not Relevant
Land having limitations which may be surmountable in time but which cannot be corrected with existing knowledge at currently acceptable cost; the limitations are so severe as to preclude successful sustained use of the land in the given manner. Existing forest, shrubland greater than 18% slope, irrigated paddy rice and miscellaneous land types such as built-up areas, roads, etc are considered as not relevant.

CLIMATE TYPE

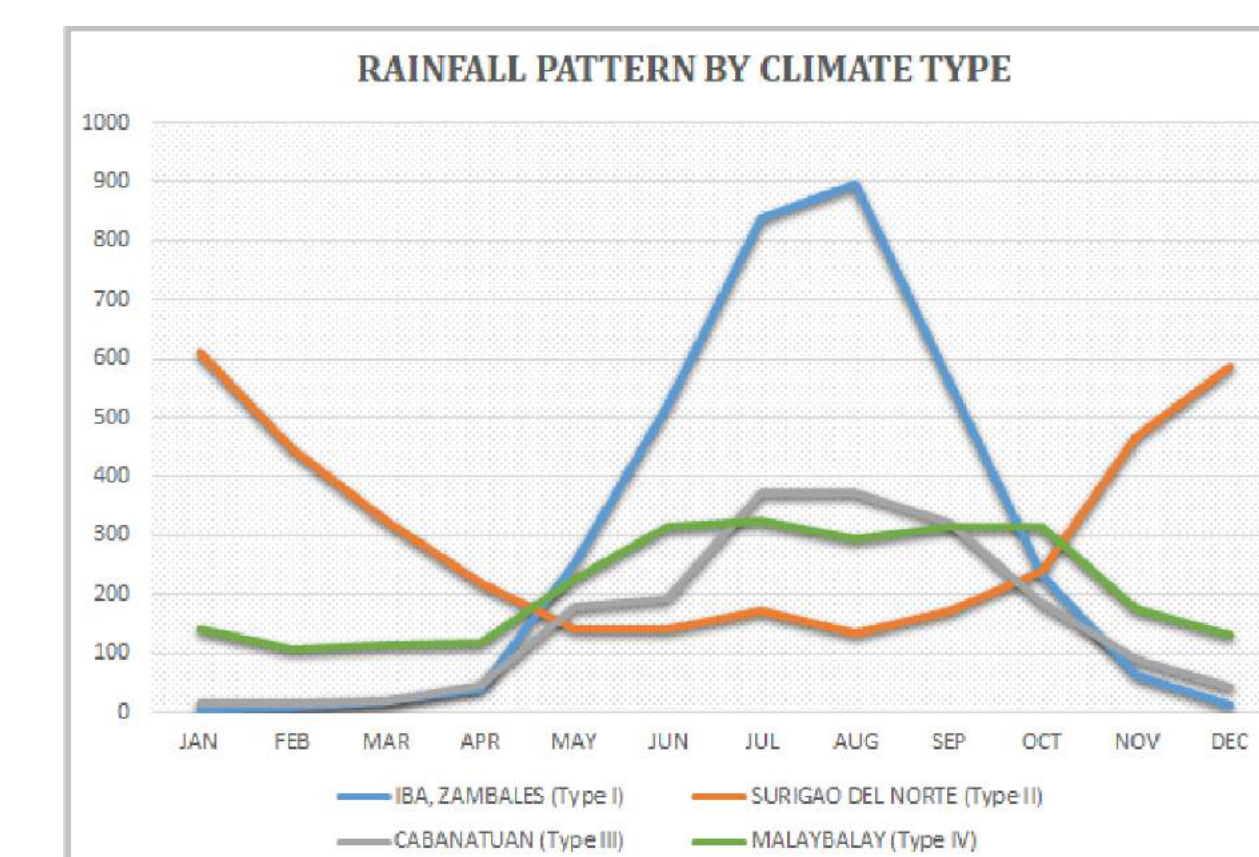
TYPE I : Two pronounced season, dry from November to April and wet during the rest of the year. Maximum rain period is from June to September

TYPE II : No dry season with a very pronounced maximum rain period from December to February. There is not a single dry month. Maximum monthly rainfall occurs during the period from March to May.

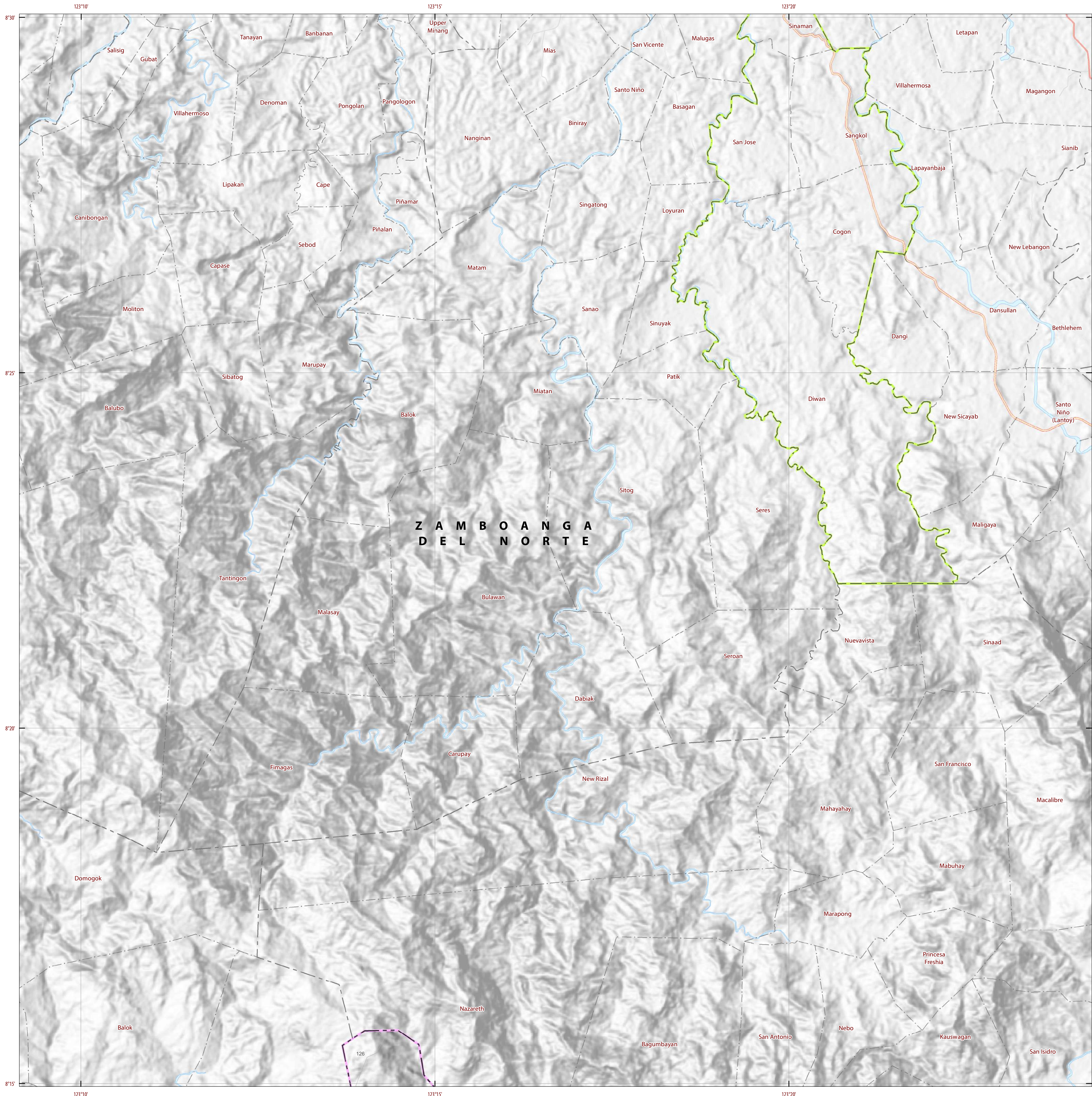
TYPE III : No very pronounced maximum rain period, with a dry season lasting only from one to three months, either during the period from December to February or from March to May. This type resembles Type I since it has a short dry season.

TYPE IV : Rainfall is more or less evenly distributed throughout the year. This type resembles Type II since it has no dry season.

Eastern part of Zamboanga Del Sur belongs to Type III climate classification and the rest on Western part belongs to Type IV.

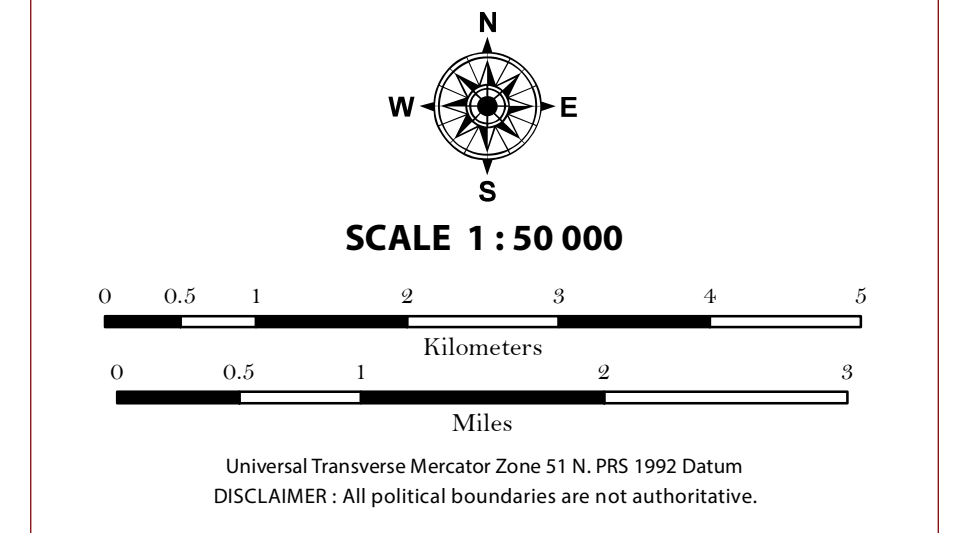


Source: PAGASA 2018, *Climatological Normals (Rainfall)*, Philippine Atmospheric, Geophysical and Astronomical Services Administration (PAGASA), accessed 27 July 2018, <<https://www1.pagasa.dost.gov.ph/index.php/climate/climatological-normals>>.



LAND SUITABILITY MAP CASSAVA

LAND RESOURCES EVALUATION AND SUITABILITY ASSESSMENT OF STRATEGIC PRODUCTION AREAS



LEGEND

SUITABILITY CLASSES

- S1 Highly Suitable** - Land having no significant limitations to sustained application of a given use, or only minor limitations that will not significantly reduce productivity or benefits and will not raise inputs above an acceptable level.
- S2 Moderately Suitable** - Land having limitations which in aggregate are moderately severe for sustained application of a given use; the limitations will reduce productivity or benefits and increase required inputs to the extent that the overall advantage to be gained from the use, although still attractive, will be appreciably inferior to that expected on class S1 land.
- S3 Marginally Suitable** - Land having limitations which in aggregate are severe for sustained application of a given use and will so reduce productivity or benefits, or increase required inputs, that this expenditure will be only marginally justified.

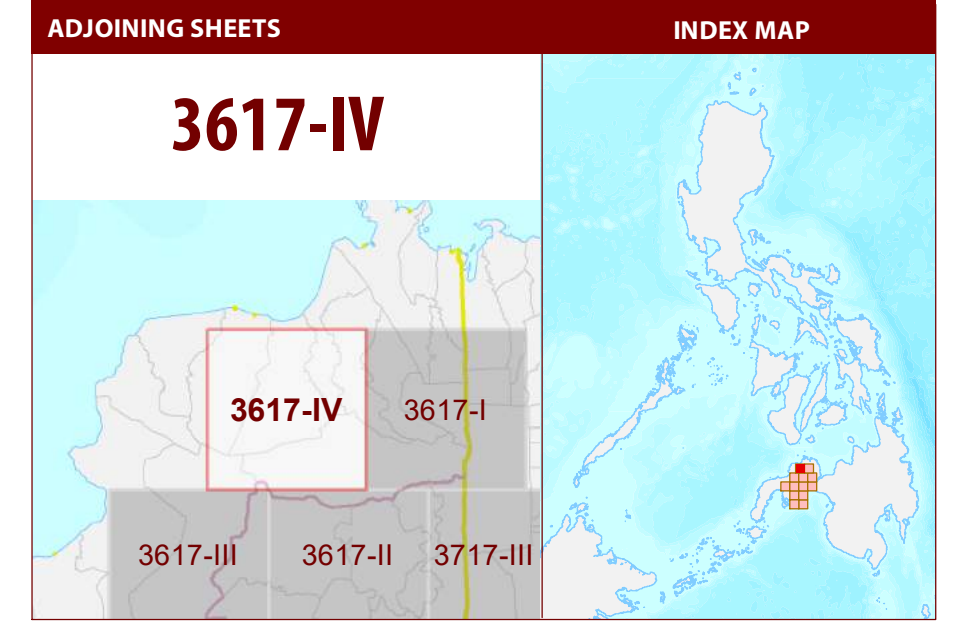
Not Suitable/ Not Relevant

OTHER SIGNS

- NGP Areas
- Cacao
- Land limitation
- Land use

CONVENTIONAL SIGNS

ROADS	BOUNDARY	HYDROLOGY
Expressway	Region	Sea / Shoreline
Trunk line	Province	Lakes / Rivers
Primary	District	PLACES
Secondary	Municipality	★ Capital City / City
Tertiary	Barangay	● Capital Town / Town
LAND USE		
Built-up	Fishpond	Mangrove



MISCELLANEOUS INFORMATION

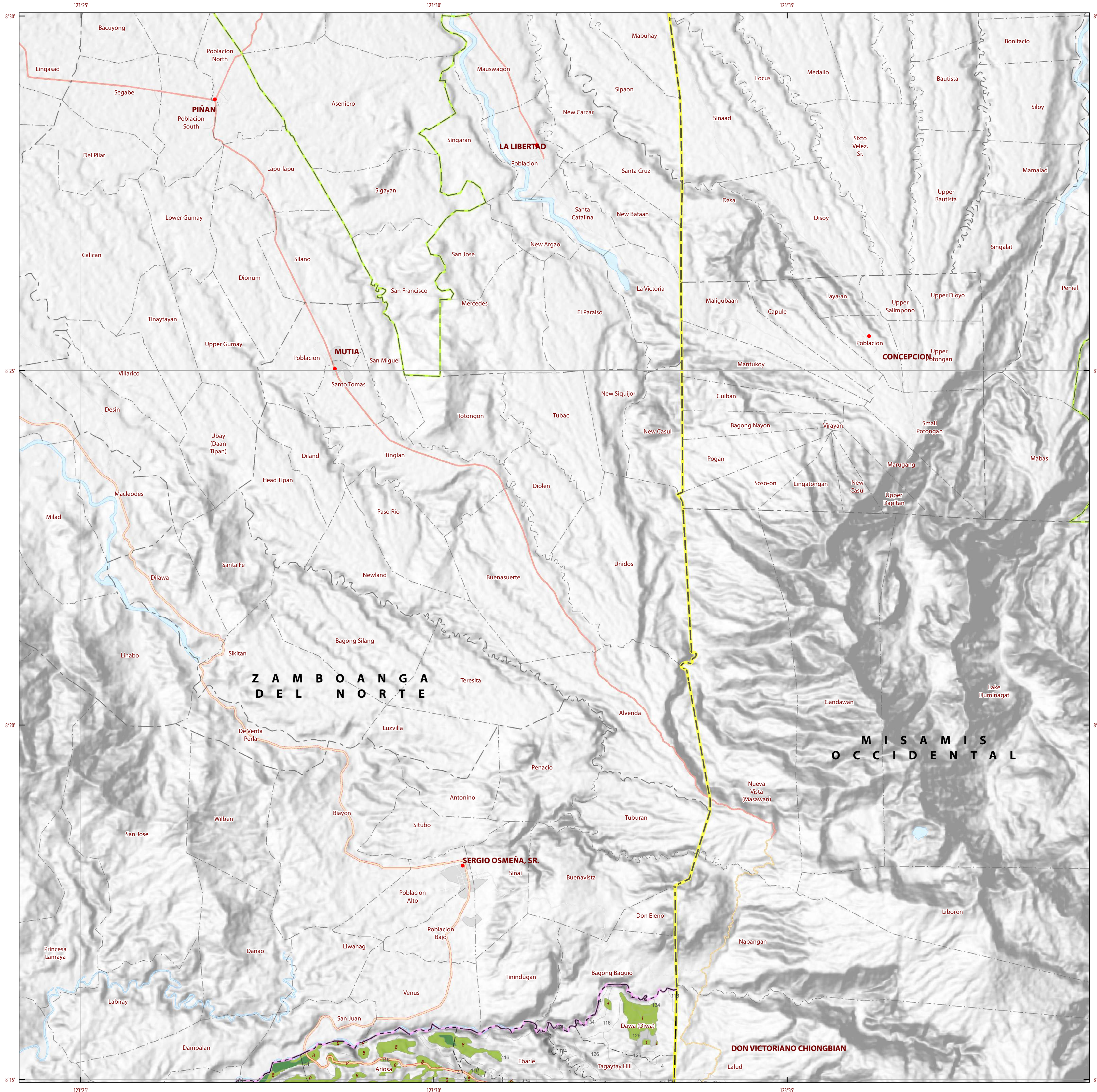
SOURCES OF INFORMATION : Topographic information taken from NAMRIA Topographic Map at 1:50,000 scale. Land resources information from the Agricultural Land Management and Evaluation Division (ALMED), Soils Survey Division (SSD) and Laboratory Services Division (LSD) of BSWM. Rice areas obtained from the Land Use System (FAO, 2015) and Philippine Rice Information System (PRISM) (IRRI, 2015). Data analysis and compilation through the Land Resources Evaluation and Suitability Assessment of Strategic Production Areas for Major Commodities Project implemented by BSWM (2017).

Project Leader : BERNARDO B. PASCUA
 GIS and Cartography : IRWIN K. SAMALCA

Funding Agency : Department of Agriculture - Bureau of Agricultural Research (DA-BAR)
 Collaborating Agencies : Philippine Council on Agriculture and Fisheries (PCAF)
 : Department of Agriculture and Fisheries - ARMM, Department of Agriculture Regional Field Office of Region IX, X, XI, XII and XIII (Caraga)
 : Local Government Unit (LGU) of covered provinces and municipalities

Map produced by the Geomatics and Soil Information Technology Division, Bureau of Soils and Water Management (BSWM).
 Users noting errors or omissions in this publication are requested to inform the Bureau of Soils and Water Management.

This publication is licensed under a Creative Commons Attribution 4.0 International License. Unless otherwise noted, copyright and any other intellectual property rights, in this publication is owned by the Philippine Government. This publication should be attributed as:
 BSWM, 2019. Land Suitability Map Series for Cassava of the PROVINCE OF ZAMBOANGA DEL SUR (50,000 Scale). CC BY NC SA 4.0.



LAND SUITABILITY MAP CASSAVA

**LAND RESOURCES EVALUATION AND SUITABILITY
ASSESSMENT OF STRATEGIC PRODUCTION AREAS**

Universal Transverse Mercator Zone 51 N, PRS 1992 Datum
DISCLAIMER: All political boundaries are not authoritative.

LEGEND

SUITABILITY CLASSES

- S1 Highly Suitable** - Land having no significant limitations to sustained application of a given use, or only minor limitations that will not significantly reduce productivity or benefits and will not raise inputs above an acceptable level.
- S2 Moderately Suitable** - Land having limitations which in aggregate are moderately severe for sustained application of a given use; the limitations will reduce productivity or benefits and increase required inputs to the extent that the overall advantage to be gained from the use, although still attractive, will be appreciably inferior to that expected on class S1 land.
- S3 Marginally Suitable** - Land having limitations which in aggregate are severe for sustained application of a given use and will so reduce productivity or benefits, or increase required inputs, that this expenditure will be only marginally justified.

Not Suitable/ Not Relevant

OTHER SIGNS

- NGP Areas
- Cacao
- Land limitation
- Land use

CONVENTIONAL SIGNS

ROADS	BOUNDARY	HYDROLOGY
Expressway	Region	Sea / Shoreline
Trunk line	Province	Lakes / Rivers
Primary	District	PLACES
Secondary	Municipality	★ Capital City / City
Tertiary	Barangay	● Capital Town / Town

LAND USE

- Built-up
- Fishpond
- Mangrove

ADJOINING SHEETS

3617-I

3617-IV, 3617-I, 3617-III, 3617-II, 3717-III

INDEX MAP

MISCELLANEOUS INFORMATION

SOURCES OF INFORMATION: Topographic information taken from NAMRIA Topographic Map at 1:50,000 scale. Land resources information from the Agricultural Land Management and Evaluation Division (ALMED), Soils Survey Division (SSD) and Laboratory Services Division (LSD) of BSWM. Rice areas obtained from the Land Use System (FAO, 2015) and Philippine Rice Information System (PRISM) (IRRI, 2015). Data analysis and compilation through the Land Resources Evaluation and Suitability Assessment of Strategic Production Areas for Major Commodities Project implemented by BSWM (2017).

Project Leader : BERNARDO B. PASCUA
GIS and Cartography : IRWIN K. SAMALCA

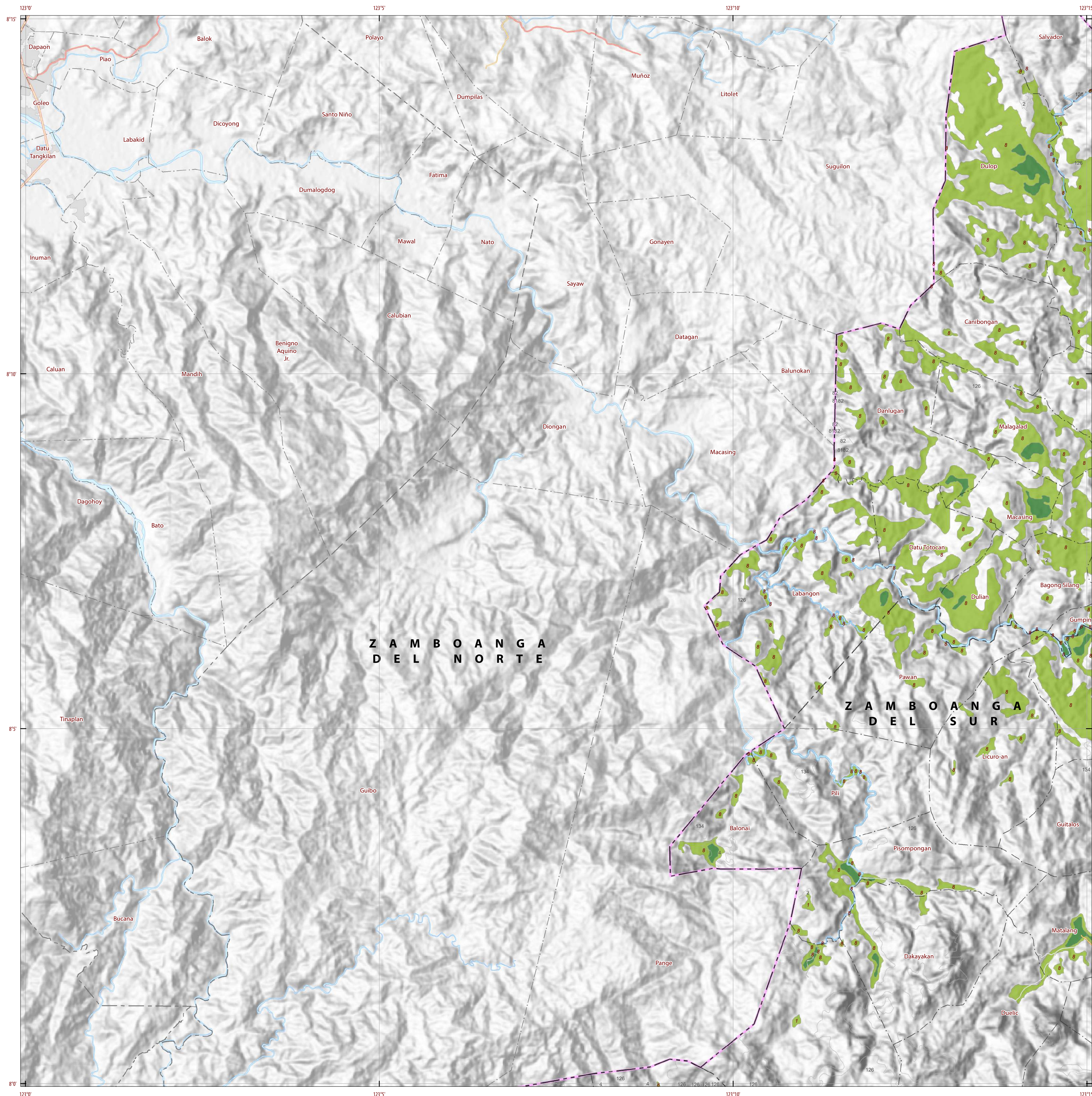
Funding Agency : Department of Agriculture - Bureau of Agricultural Research (DA-BAR)
Collaborating Agencies : Philippine Council on Agriculture and Fisheries (PCAF)
: Department of Agriculture and Fisheries - ARMM, Department of Agriculture Regional Field Office of Region IX, X, XI, XII and XIII (Caraga)
: Local Government Unit (LGU) of covered provinces and municipalities

Map produced by the Geomatics and Soil Information Technology Division, Bureau of Soils and Water Management (BSWM).
Users noting errors or omissions in this publication are requested to inform the Bureau of Soils and Water Management.

This publication is licensed under a Creative Commons Attribution 4.0 International License. Unless otherwise noted, copyright and any other intellectual property rights, in this publication is owned by the Philippine Government. This publication should be attributed as:
BSWM, 2019. Land Suitability Map Series for Cassava of the PROVINCE OF ZAMBOANGA DEL SUR (50,000 Scale). CC BY-NC-SA 4.0.

**REPUBLIC OF THE PHILIPPINES
DEPARTMENT OF AGRICULTURE
BUREAU OF SOILS AND WATER MANAGEMENT**
SRDC Bldg., Elliptical Road Cor. Visayas Avenue, Diliman, Quezon City 1101
Tel/Fax No.:(+632) 332-9534 E-mail: bswm@icenter.gov.ph

PROVINCE OF ZAMBOANGA DEL SUR Sheet 2 of 13 Sheet No. 3617-I



LAND SUITABILITY MAP CASSAVA

**LAND RESOURCES EVALUATION AND SUITABILITY
ASSESSMENT OF STRATEGIC PRODUCTION AREAS**

SCALE 1 : 50 000

0 0.5 1 2 3 4 5
Kilometers

0 0.5 1 2 3
Miles

Universal Transverse Mercator Zone 51 N, PRS 1992 Datum
DISCLAIMER: All political boundaries are not authoritative.

LEGEND

SUITABILITY CLASSES

- S1 Highly Suitable** - Land having no significant limitations to sustained application of a given use, or only minor limitations that will not significantly reduce productivity or benefits and will not raise inputs above an acceptable level.
- S2 Moderately Suitable** - Land having limitations which in aggregate are moderately severe for sustained application of a given use; the limitations will reduce productivity or benefits and increase required inputs to the extent that the overall advantage to be gained from the use, although still attractive, will be appreciably inferior to that expected on class S1 land.
- S3 Marginally Suitable** - Land having limitations which in aggregate are severe for sustained application of a given use and will so reduce productivity or benefits, or increase required inputs, that this expenditure will be only marginally justified.

Not Suitable/ Not Relevant

OTHER SIGNS

- NGP Areas
- Cacao
- Land limitation
- Land use

CONVENTIONAL SIGNS

ROADS	BOUNDARY	HYDROLOGY
Expressway	Region	Sea / Shoreline
Trunk line	Province	Lakes / Rivers
Primary	District	PLACES
Secondary	Municipality	★ Capital City / City
Tertiary	Barangay	● Capital Town / Town

LAND USE

- Built-up
- Fishpond
- Mangrove

ADJOINING SHEETS

INDEX MAP

3617-III

MISCELLANEOUS INFORMATION

SOURCES OF INFORMATION: Topographic information taken from NAMRIA Topographic Map at 1:50,000 scale. Land resources information from the Agricultural Land Management and Evaluation Division (ALMED), Soils Survey Division (SSD) and Laboratory Services Division (LSD) of BSWM. Rice areas obtained from the Land Use System (FAO, 2015) and Philippine Rice Information System (PRISM) (IRRI, 2015). Data analysis and compilation through the Land Resources Evaluation and Suitability Assessment of Strategic Production Areas for Major Commodities Project implemented by BSWM (2017).

Project Leader : BERNARDO B. PASCUA
GIS and Cartography : IRWIN K. SAMALCA

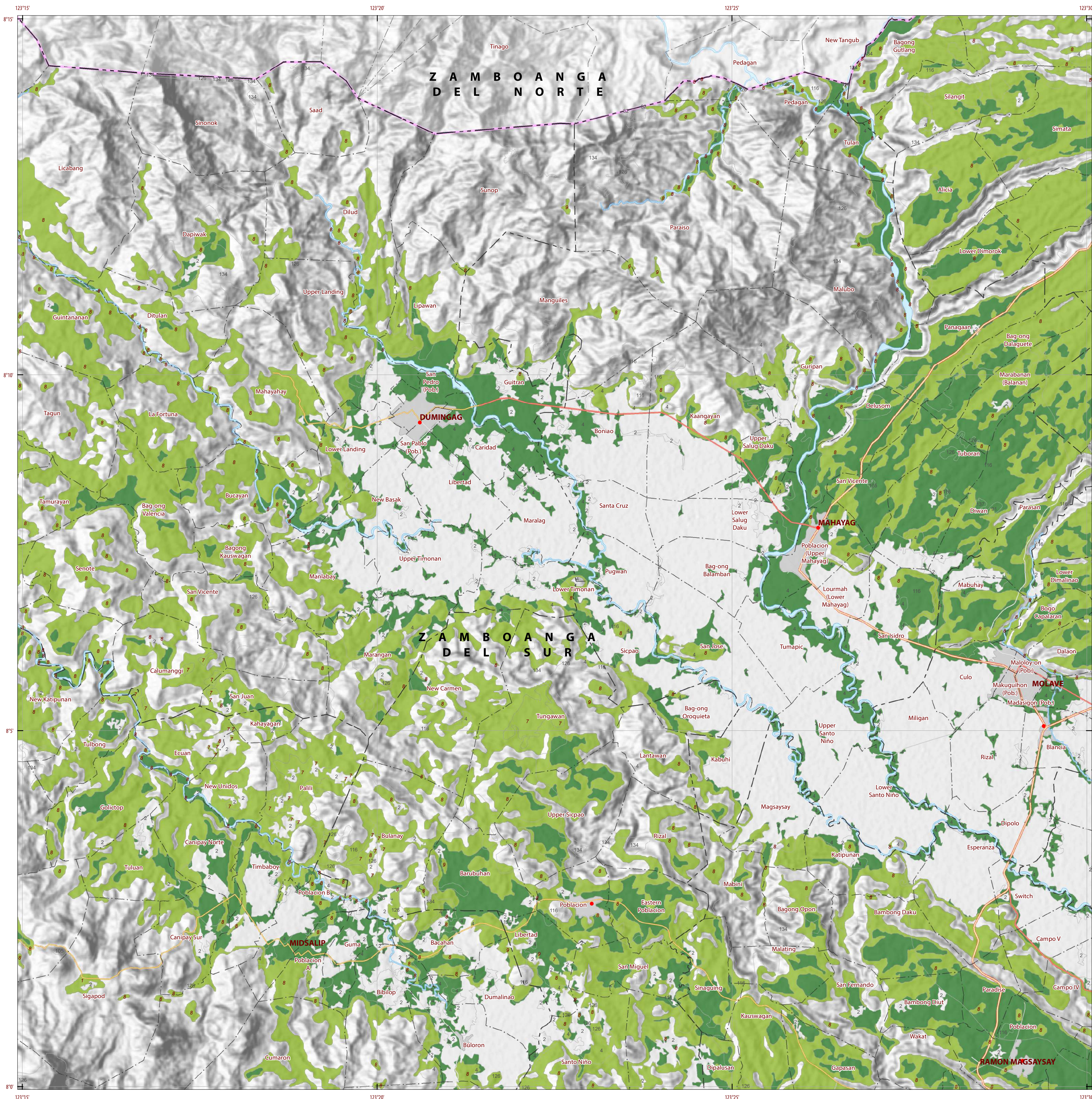
Funding Agency : Department of Agriculture - Bureau of Agricultural Research (DA-BAR)
Collaborating Agencies : Philippine Council on Agriculture and Fisheries (PCAF)
: Department of Agriculture and Fisheries - ARMM, Department of Agriculture Regional Field Office of Region IX, X, XI, XII and XIII (Caraga)
: Local Government Unit (LGU) of covered provinces and municipalities

Map produced by the Geomatics and Soil Information Technology Division, Bureau of Soils and Water Management (BSWM).
Users noting errors or omissions in this publication are requested to inform the Bureau of Soils and Water Management.

This publication is licensed under a Creative Commons Attribution 4.0 International License. Unless otherwise noted, copyright and any other intellectual property rights, in this publication is owned by the Philippine Government. This publication should be attributed as:
BSWM, 2019. Land Suitability Map Series for Cassava of the PROVINCE OF ZAMBOANGA DEL SUR (50,000 Scale). CC BY NC SA 4.0.

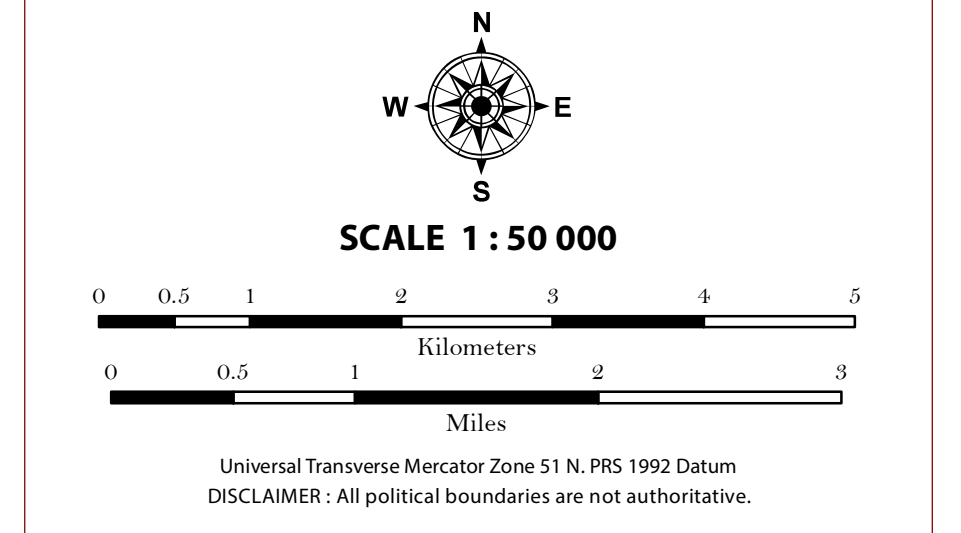
**REPUBLIC OF THE PHILIPPINES
DEPARTMENT OF AGRICULTURE
BUREAU OF SOILS AND WATER MANAGEMENT**
SRDC Bldg, Elliptical Road Cor. Visayas Avenue, Diliman, Quezon City 1101
Tel/Fax No.:(+632) 332-9534 E-mail: bswmcenter@da.gov.ph

PROVINCE OF ZAMBOANGA DEL SUR Sheet 3 of 13 Sheet No. 3617-III



LAND SUITABILITY MAP CASSAVA

LAND RESOURCES EVALUATION AND SUITABILITY ASSESSMENT OF STRATEGIC PRODUCTION AREAS



LEGEND

SUITABILITY CLASSES

- S1 Highly Suitable** - Land having no significant limitations to sustained application of a given use, or only minor limitations that will not significantly reduce productivity or benefits and will not raise inputs above an acceptable level.
- S2 Moderately Suitable** - Land having limitations which in aggregate are moderately severe for sustained application of a given use; the limitations will reduce productivity or benefits and increase required inputs to the extent that the overall advantage to be gained from the use, although still attractive, will be appreciably inferior to that expected on class S1 land.
- S3 Marginally Suitable** - Land having limitations which in aggregate are severe for sustained application of a given use and will so reduce productivity or benefits, or increase required inputs, that this expenditure will be only marginally justified.

OTHER SIGNS

- NGP Areas
- Cacao
- Land limitation
- Land use

CONVENTIONAL SIGNS

ROADS	BOUNDARY	HYDROLOGY
Expressway	Region	Sea / Shoreline
Trunk line	Province	Lakes / Rivers
Primary	District	PLACES
Secondary	Municipality	★ Capital City / City
Tertiary	Barangay	● Capital Town / Town

LAND USE

- Built-up
- Fishpond
- Mangrove

ADJOINING SHEETS

INDEX MAP

MISCELLANEOUS INFORMATION

SOURCES OF INFORMATION: Topographic information taken from NAMRIA Topographic Map at 1:50,000 scale. Land resources information from the Agricultural Land Management and Evaluation Division (ALMED), Soils Survey Division (SSD) and Laboratory Services Division (LSD) of BSWM. Rice areas obtained from the Land Use System (FAO, 2015) and Philippine Rice Information System (PRISM) (IRRI, 2015). Data analysis and compilation through the Land Resources Evaluation and Suitability Assessment of Strategic Production Areas for Major Commodities Project implemented by BSWM (2017).

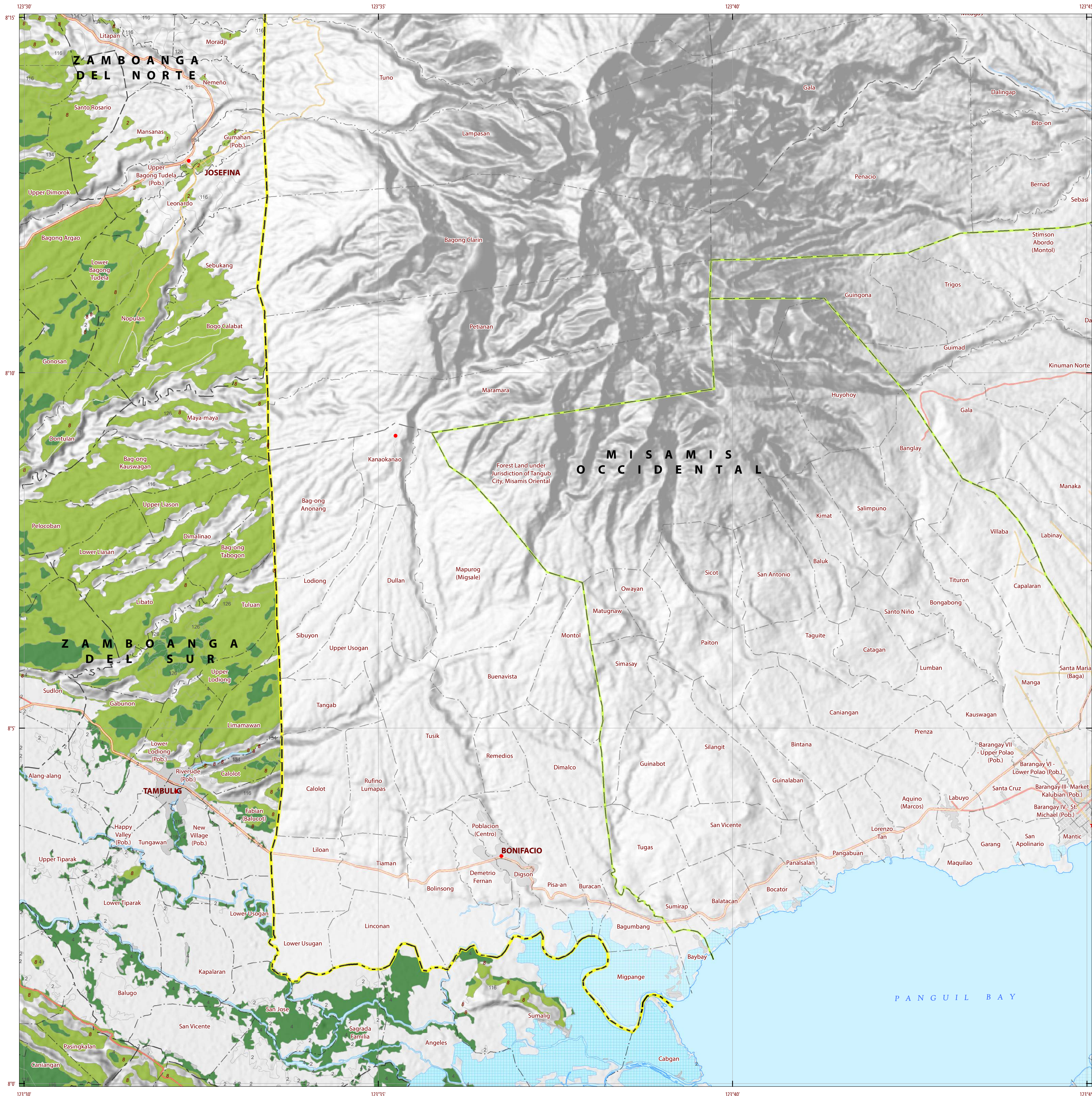
Project Leader : BERNARDO B. PASCUA
GIS and Cartography : IRWIN K. SAMALCA

Funding Agency : Department of Agriculture - Bureau of Agricultural Research (DA-BAR)
Collaborating Agencies : Philippine Council on Agriculture and Fisheries (PCAF)
: Department of Agriculture and Fisheries - ARMM, Department of Agriculture Regional Field Office of Region IX, X, XII and XIII (Caraga)
: Local Government Unit (LGU) of covered provinces and municipalities

Map produced by the Geomatics and Soil Information Technology Division, Bureau of Soils and Water Management (BSWM).
Users noting errors or omissions in this publication are requested to inform the Bureau of Soils and Water Management.

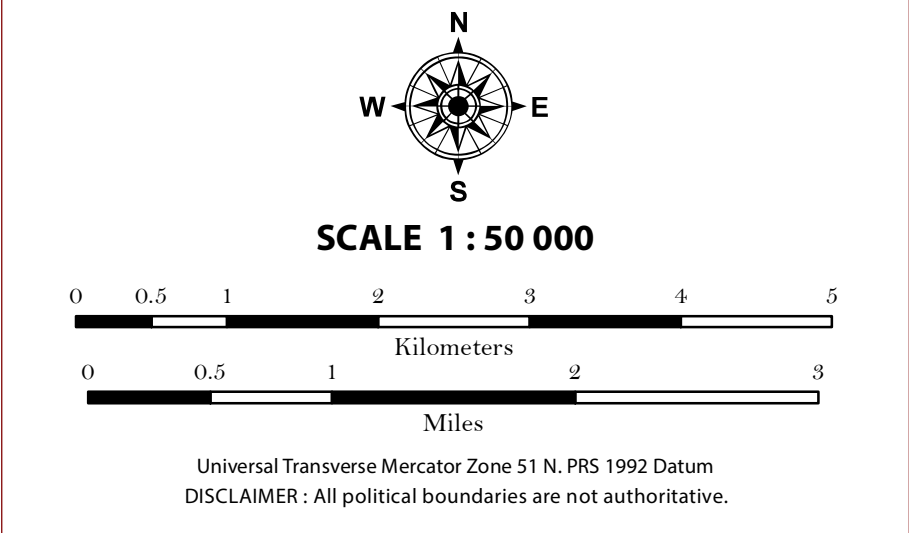
This publication is licensed under a Creative Commons Attribution 4.0 International License. Unless otherwise noted, copyright and any other intellectual property rights in this publication is owned by the Philippine Government. This publication should be attributed as:
BSWM, 2019. Land Suitability Map Series for Cassava of the PROVINCE OF ZAMBOANGA DEL SUR (50,000 Scale). CC BY NC SA 4.0.

**REPUBLIC OF THE PHILIPPINES
DEPARTMENT OF AGRICULTURE
BUREAU OF SOILS AND WATER MANAGEMENT**
SRDC Bldg, Elliptical Road Cor. Visayas Avenue, Diliman, Quezon City 1101
Tel/Fax No.:(+632) 332-9534 E-mail: bswmclientcenter@yahoo.com



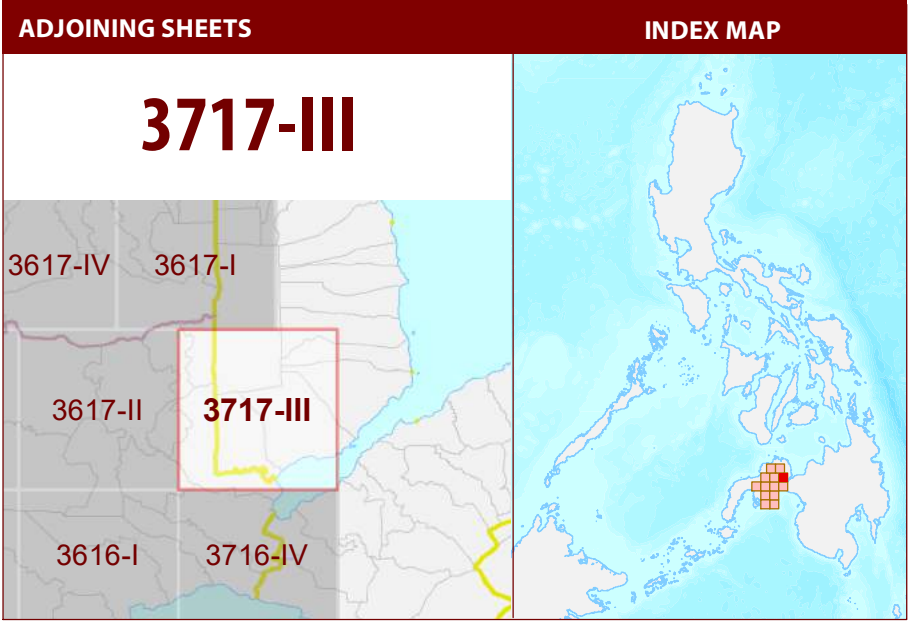
LAND SUITABILITY MAP CASSAVA

LAND RESOURCES EVALUATION AND SUITABILITY ASSESSMENT OF STRATEGIC PRODUCTION AREAS



- LEGEND**
- SUITABILITY CLASSES**
- S1 Highly Suitable** - Land having no significant limitations to sustained application of a given use, or only minor limitations that will not significantly reduce productivity or benefits and will not raise inputs above an acceptable level.
 - S2 Moderately Suitable** - Land having limitations which in aggregate are moderately severe for sustained application of a given use; the limitations will reduce productivity or benefits and increase required inputs to the extent that the overall advantage to be gained from the use, although still attractive, will be appreciably inferior to that expected on class S1 land.
 - S3 Marginally Suitable** - Land having limitations which in aggregate are severe for sustained application of a given use and will so reduce productivity or benefits, or increase required inputs, that this expenditure will be only marginally justified.
- Not Suitable/ Not Relevant**
- OTHER SIGNS**
- NGP Areas
 - Cacao
 - Land limitation
 - Land use

- CONVENTIONAL SIGNS**
- | | | |
|-----------------|-----------------|---------------------|
| ROADS | BOUNDARY | HYDROLOGY |
| Expressway | Region | Sea / Shoreline |
| Trunk line | Province | Lakes / Rivers |
| Primary | District | PLACES |
| Secondary | Municipality | Capital City / City |
| Tertiary | Barangay | Capital Town / Town |
| LAND USE | | |
| Built-up | Fishpond | Mangrove |



MISCELLANEOUS INFORMATION

SOURCES OF INFORMATION: Topographic information taken from NAMRIA Topographic Map at 1:50,000 scale. Land resources information from the Agricultural Land Management and Evaluation Division (ALMED), Soils Survey Division (SSD) and Laboratory Services Division (LSD) of BSWM. Rice areas obtained from the Land Use System (FAO, 2015) and Philippine Rice Information System (PRISM) (IRRI, 2015). Data analysis and compilation through the Land Resources Evaluation and Suitability Assessment of Strategic Production Areas for Major Commodities Project implemented by BSWM (2017).

Project Leader : BERNARDO B. PASCUA
GIS and Cartography : IRWIN K. SAMALCA

Funding Agency : Department of Agriculture - Bureau of Agricultural Research (DA-BAR)
Collaborating Agencies : Philippine Council on Agriculture and Fisheries (PCAF)
: Department of Agriculture and Fisheries - ARMM, Department of Agriculture Regional Field Office of Region IX, X, XI, XII and XIII (Caraga)
: Local Government Unit (LGU) of covered provinces and municipalities

Map produced by the Geomatics and Soil Information Technology Division, Bureau of Soils and Water Management (BSWM).
Users noting errors or omissions in this publication are requested to inform the Bureau of Soils and Water Management.

This publication is licensed under a Creative Commons Attribution 4.0 International License. Unless otherwise noted, copyright and any other intellectual property rights in this publication is owned by the Philippine Government. This publication should be attributed as:
BSWM, 2019. Land Suitability Map Series for Cassava of the PROVINCE OF ZAMBOANGA DEL SUR (50,000 Scale). CC BY NC SA 4.0.



**LAND SUITABILITY MAP
CASSAVA**

**LAND RESOURCES EVALUATION AND SUITABILITY
ASSESSMENT OF STRATEGIC PRODUCTION AREAS**

SCALE 1 : 50 000

0 0.5 1 2 3 4 5
Kilometers

0 0.5 1 2 3
Miles

Universal Transverse Mercator Zone 51 N, PRS 1992 Datum
DISCLAIMER: All political boundaries are not authoritative.

LEGEND

SUITABILITY CLASSES

- S1 Highly Suitable** - Land having no significant limitations to sustained application of a given use, or only minor limitations that will not significantly reduce productivity or benefits and will not raise inputs above an acceptable level.
- S2 Moderately Suitable** - Land having limitations which in aggregate are moderately severe for sustained application of a given use; the limitations will reduce productivity or benefits and increase required inputs to the extent that the overall advantage to be gained from the use, although still attractive, will be appreciably inferior to that expected on class S1 land.
- S3 Marginally Suitable** - Land having limitations which in aggregate are severe for sustained application of a given use and will so reduce productivity or benefits, or increase required inputs, that this expenditure will be only marginally justified.

Not Suitable/ Not Relevant

OTHER SIGNS

- NGP Areas
- Cacao
- Land limitation
- Land use

CONVENTIONAL SIGNS

ROADS	BOUNDARY	HYDROLOGY
Expressway	Region	Sea / Shoreline
Trunk line	Province	Lakes / Rivers
Primary	District	PLACES
Secondary	Municipality	★ Capital City / City
Tertiary	Barangay	● Capital Town / Town

LAND USE

- Built-up
- Fishpond
- Mangrove

ADJOINING SHEETS

INDEX MAP

3616-I

3617-III 3617-II 3717-III
3616-IV 3616-I 3716-IV
3616-III 3616-II

MISCELLANEOUS INFORMATION

SOURCES OF INFORMATION: Topographic information taken from NAMRIA Topographic Map at 1:50,000 scale. Land resources information from the Agricultural Land Management and Evaluation Division (ALMED), Soils Survey Division (SSD) and Laboratory Services Division (LSD) of BSWM. Rice areas obtained from the Land Use System (FAO, 2015) and Philippine Rice Information System (PRISM) (IRRI, 2015). Data analysis and compilation through the Land Resources Evaluation and Suitability Assessment of Strategic Production Areas for Major Commodities Project implemented by BSWM (2017).

Project Leader : BERNARDO B. PASCUA
GIS and Cartography : IRWIN K. SAMALCA

Funding Agency : Department of Agriculture - Bureau of Agricultural Research (DA-BAR)
Collaborating Agencies : Philippine Council on Agriculture and Fisheries (PCAF)
: Department of Agriculture and Fisheries - ARMM, Department of Agriculture Regional Field Office of Region IX, X, XI, XII and XIII (Caraga)
: Local Government Unit (LGU) of covered provinces and municipalities

Map produced by the Geomatics and Soil Information Technology Division, Bureau of Soils and Water Management (BSWM).
Users noting errors or omissions in this publication are requested to inform the Bureau of Soils and Water Management.

This publication is licensed under a Creative Commons Attribution 4.0 International License. Unless otherwise noted, copyright and any other intellectual property rights, in this publication is owned by the Philippine Government. This publication should be attributed as:
BSWM, 2019. Land Suitability Map Series for Cassava of the PROVINCE OF ZAMBOANGA DEL SUR (50,000 Scale). CC BY NC SA 4.0.

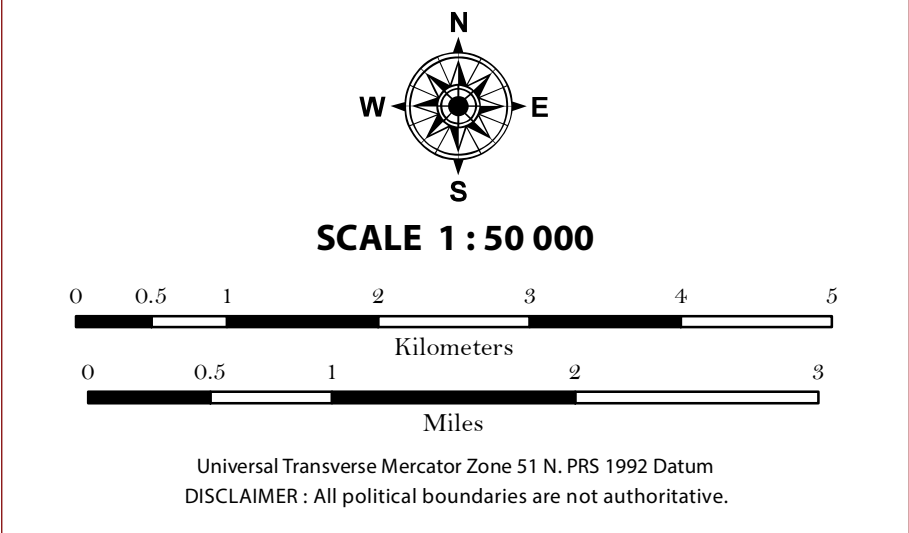
**REPUBLIC OF THE PHILIPPINES
DEPARTMENT OF AGRICULTURE
BUREAU OF SOILS AND WATER MANAGEMENT**
SRDC Bldg, Elliptical Road Cor. Visayas Avenue, Diliman, Quezon City 1101
Tel/Fax No.:(+632) 332-9534 E-mail: bswmcenter@da.gov.ph

PROVINCE OF ZAMBOANGA DEL SUR Sheet 8 of 13 Sheet No. 3616-I



LAND SUITABILITY MAP CASSAVA

LAND RESOURCES EVALUATION AND SUITABILITY ASSESSMENT OF STRATEGIC PRODUCTION AREAS



LEGEND

SUITABILITY CLASSES

- S1 Highly Suitable** - Land having no significant limitations to sustained application of a given use, or only minor limitations that will not significantly reduce productivity or benefits and will not raise inputs above an acceptable level.
- S2 Moderately Suitable** - Land having limitations which in aggregate are moderately severe for sustained application of a given use; the limitations will reduce productivity or benefits and increase required inputs to the extent that the overall advantage to be gained from the use, although still attractive, will be appreciably inferior to that expected on class S1 land.
- S3 Marginally Suitable** - Land having limitations which in aggregate are severe for sustained application of a given use and will so reduce productivity or benefits, or increase required inputs, that this expenditure will be only marginally justified.

Not Suitable/ Not Relevant

OTHER SIGNS

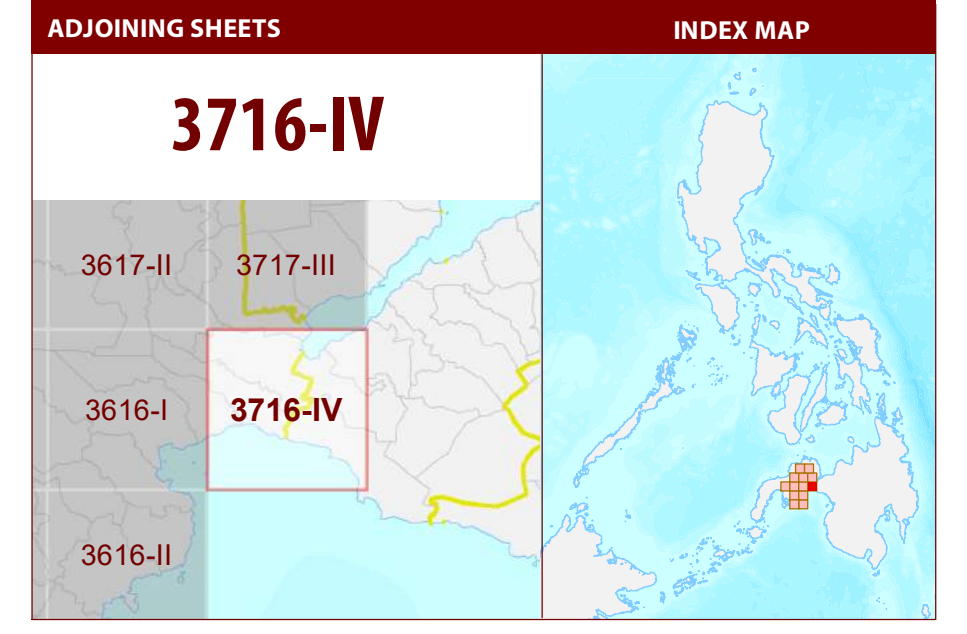
- NGP Areas
- Cacao
- Land limitation
- Land use

CONVENTIONAL SIGNS

ROADS	BOUNDARY	HYDROLOGY
Expressway	Region	Sea / Shoreline
Trunk line	Province	Lakes / Rivers
Primary	District	PLACES
Secondary	Municipality	★ Capital City / City
Tertiary	Barangay	● Capital Town / Town

LAND USE

- Built-up
- Fishpond
- Mangrove



MISCELLANEOUS INFORMATION

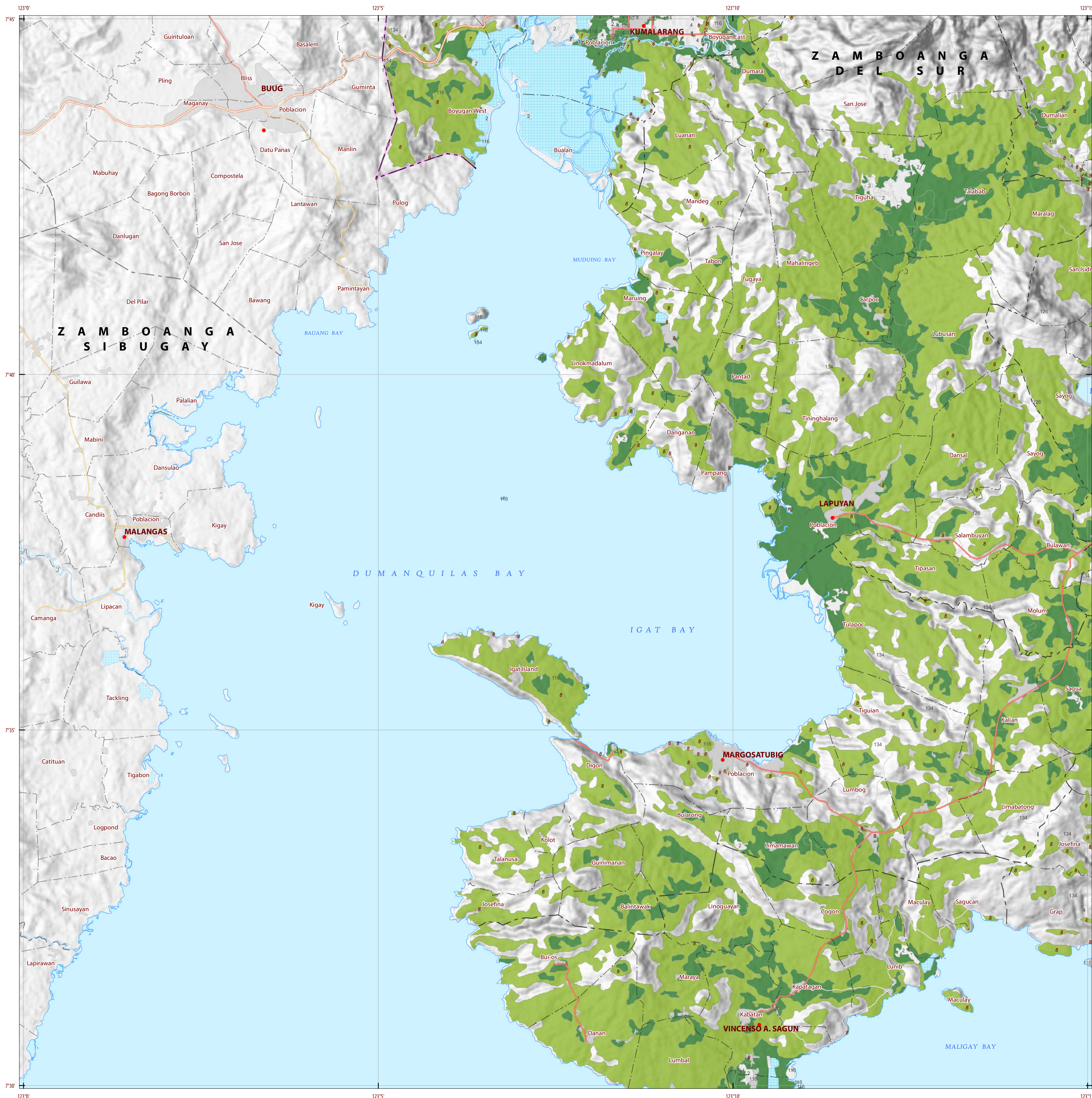
SOURCES OF INFORMATION : Topographic information taken from NAMRIA Topographic Map at 1:50,000 scale. Land resources information from the Agricultural Land Management and Evaluation Division (ALMED), Soils Survey Division (SSD) and Laboratory Services Division (LSD) of BSWM. Rice areas obtained from the Land Use System (FAO, 2015) and Philippine Rice Information System (PRISM) (IRRI, 2015). Data analysis and compilation through the Land Resources Evaluation and Suitability Assessment of Strategic Production Areas for Major Commodities Project implemented by BSWM (2017).

Project Leader : BERNARDO B. PASCUA
GIS and Cartography : IRWIN K. SAMALCA

Funding Agency : Department of Agriculture - Bureau of Agricultural Research and Extension (DA-BARE)
Collaborating Agencies : Philippine Council on Agriculture and Fisheries (PCAF)
: Department of Agriculture and Fisheries - ARMM, Department of Agriculture Regional Field Office of Region IX, X, XI, XII and XIII (Caraga)
: Local Government Unit (LGU) of covered provinces and municipalities

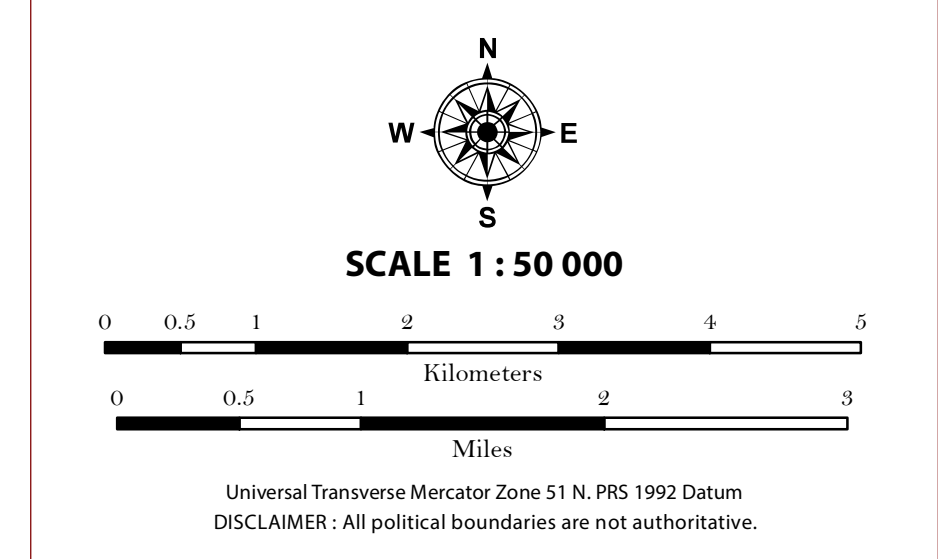
Map produced by the Geomatics and Soil Information Technology Division, Bureau of Soils and Water Management (BSWM).
Users noting errors or omissions in this publication are requested to inform the Bureau of Soils and Water Management.

This publication is licensed under a Creative Commons Attribution 4.0 International License. Unless otherwise noted, copyright and any other intellectual property rights, in this publication is owned by the Philippine Government. This publication should be attributed as:
BSWM, 2019. Land Suitability Map Series for Cassava of the PROVINCE OF ZAMBOANGA DEL SUR (50,000 Scale). CC BY NC SA 4.0.



LAND SUITABILITY MAP CASSAVA

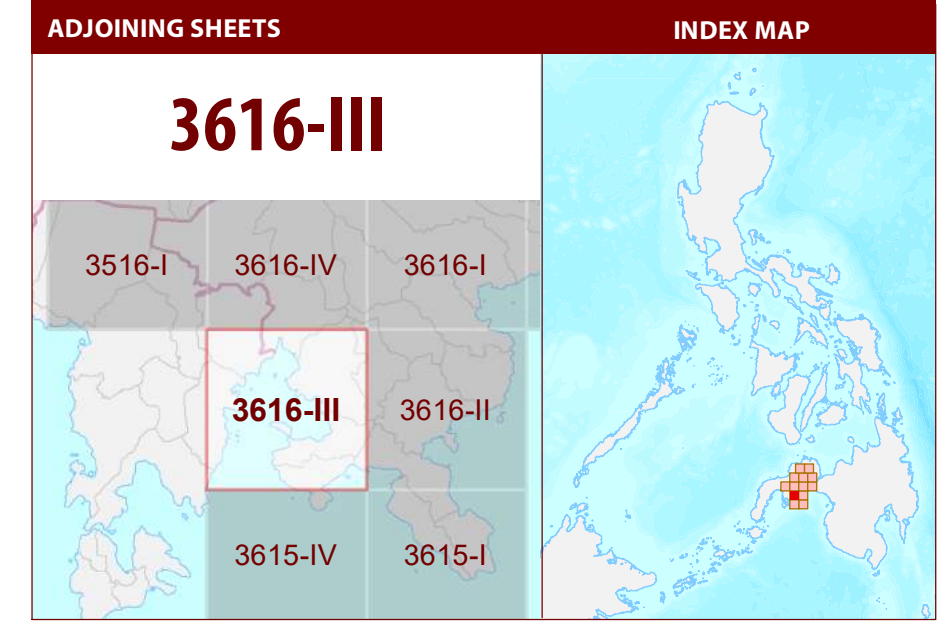
LAND RESOURCES EVALUATION AND SUITABILITY ASSESSMENT OF STRATEGIC PRODUCTION AREAS



LEGEND

- SUITABILITY CLASSES**
- S1 Highly Suitable** - Land having no significant limitations to sustained application of a given use, or only minor limitations that will not significantly reduce productivity or benefits and will not raise inputs above an acceptable level.
 - S2 Moderately Suitable** - Land having limitations which in aggregate are moderately severe for sustained application of a given use; the limitations will reduce productivity or benefits and increase required inputs to the extent that the overall advantage to be gained from the use, although still attractive, will be appreciably inferior to that expected on class S1 land.
 - S3 Marginally Suitable** - Land having limitations which in aggregate are severe for sustained application of a given use and will so reduce productivity or benefits, or increase required inputs, that this expenditure will be only marginally justified.
 - Not Suitable/ Not Relevant**
- OTHER SIGNS**
- NGP Areas
 - Cacao
 - Land limitation
 - Land use

- CONVENTIONAL SIGNS**
- | ROADS | BOUNDARY | HYDROLOGY |
|------------|--------------|-----------------------|
| Expressway | Region | Sea / Shoreline |
| Trunk line | Province | Lakes / Rivers |
| Primary | District | PLACES |
| Secondary | Municipality | ★ Capital City / City |
| Tertiary | Barangay | ● Capital Town / Town |
- LAND USE**
- Built-up
 - Fishpond
 - Mangrove



MISCELLANEOUS INFORMATION

SOURCES OF INFORMATION : Topographic information taken from NAMRIA Topographic Map at 1:50,000 scale. Land resources information from the Agricultural Land Management and Evaluation Division (ALMED), Soils Survey Division (SSD) and Laboratory Services Division (LSD) of BSWM. Rice areas obtained from the Land Use System (FAO, 2015) and Philippine Rice Information System (PRISM) (IRRI, 2015). Data analysis and compilation through the Land Resources Evaluation and Suitability Assessment of Strategic Production Areas for Major Commodities Project implemented by BSWM (2017).

Project Leader : BERNARDO B. PASCUA
 GIS and Cartography : IRWIN K. SAMALCA

Funding Agency : Department of Agriculture - Bureau of Agricultural Research (DA-BAR)
 Collaborating Agencies : Philippine Council on Agriculture and Fisheries (PCAF)
 : Department of Agriculture and Fisheries - ARMM, Department of Agriculture Regional Field Office of Region IX, X, XI, XII and XIII (Caraga)
 : Local Government Unit (LGU) of covered provinces and municipalities

Map produced by the Geomatics and Soil Information Technology Division, Bureau of Soils and Water Management (BSWM).
 Users noting errors or omissions in this publication are requested to inform the Bureau of Soils and Water Management.

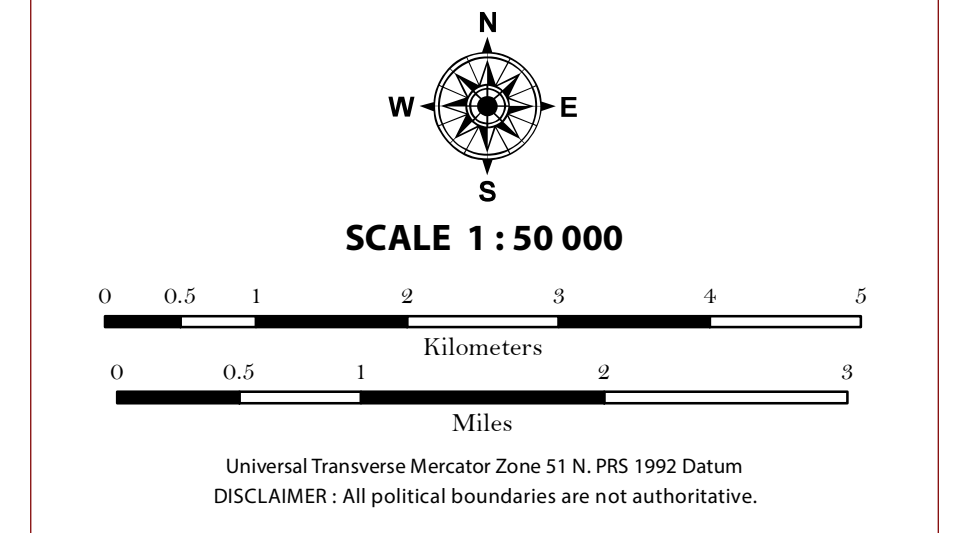
This publication is licensed under a Creative Commons Attribution 4.0 International License. Unless otherwise noted, copyright and any other intellectual property rights, in this publication is owned by the Philippine Government. This publication should be attributed as:
 BSWM, 2019. Land Suitability Map Series for Cassava of the PROVINCE OF ZAMBOANGA DEL SUR (50,000 Scale). CC BY-NC-SA 4.0.

REPUBLIC OF THE PHILIPPINES
 DEPARTMENT OF AGRICULTURE
 BUREAU OF SOILS AND WATER MANAGEMENT
 SRDC Bldg, Elliptical Road Cor. Visayas Avenue, Diliman, Quezon City 1101
 Tel/Fax No.:(+632) 332-9534 E-mail: bswmcenter@da.gov.ph



LAND SUITABILITY MAP CASSAVA

LAND RESOURCES EVALUATION AND SUITABILITY ASSESSMENT OF STRATEGIC PRODUCTION AREAS



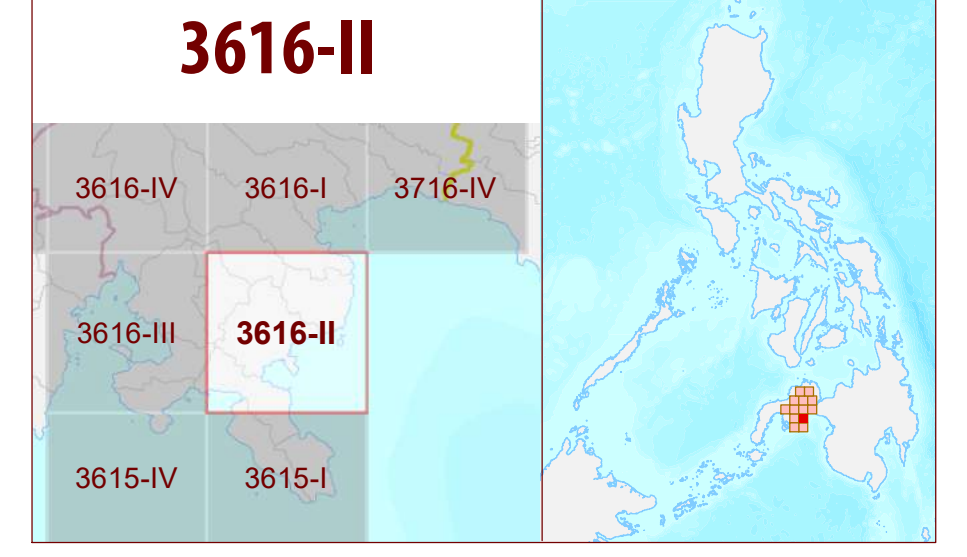
LEGEND

- SUITABILITY CLASSES**
- S1 Highly Suitable** - Land having no significant limitations to sustained application of a given use, or only minor limitations that will not significantly reduce productivity or benefits and will not raise inputs above an acceptable level.
 - S2 Moderately Suitable** - Land having limitations which in aggregate are moderately severe for sustained application of a given use; the limitations will reduce productivity or benefits and increase required inputs to the extent that the overall advantage to be gained from the use, although still attractive, will be appreciably inferior to that expected on class S1 land.
 - S3 Marginally Suitable** - Land having limitations which in aggregate are severe for sustained application of a given use and will so reduce productivity or benefits, or increase required inputs, that this expenditure will be only marginally justified.
- Not Suitable/ Not Relevant**
- OTHER SIGNS**
- NGP Areas
 - Cacao
 - Land limitation
 - Land use

CONVENTIONAL SIGNS

- ROADS**
- Expressway
 - Trunk line
 - Primary
 - Secondary
 - Tertiary
- BOUNDARY**
- Region
 - Province
 - District
 - Municipality
 - Barangay
- HYDROLOGY**
- Sea / Shoreline
 - Lakes / Rivers
- PLACES**
- Capital City / City
 - Capital Town / Town
- LAND USE**
- Built-up
 - Fishpond
 - Mangrove

ADJOINING SHEETS



MISCELLANEOUS INFORMATION

SOURCES OF INFORMATION : Topographic information taken from NAMRIA Topographic Map at 1:50,000 scale. Land resources information from the Agricultural Land Management and Evaluation Division (ALMED), Soils Survey Division (SSD) and Laboratory Services Division (LSD) of BSWM. Rice areas obtained from the Land Use System (FAO, 2015) and Philippine Rice Information System (PRISM) (IRRI, 2015). Data analysis and compilation through the Land Resources Evaluation and Suitability Assessment of Strategic Production Areas for Major Commodities Project implemented by BSWM (2017).

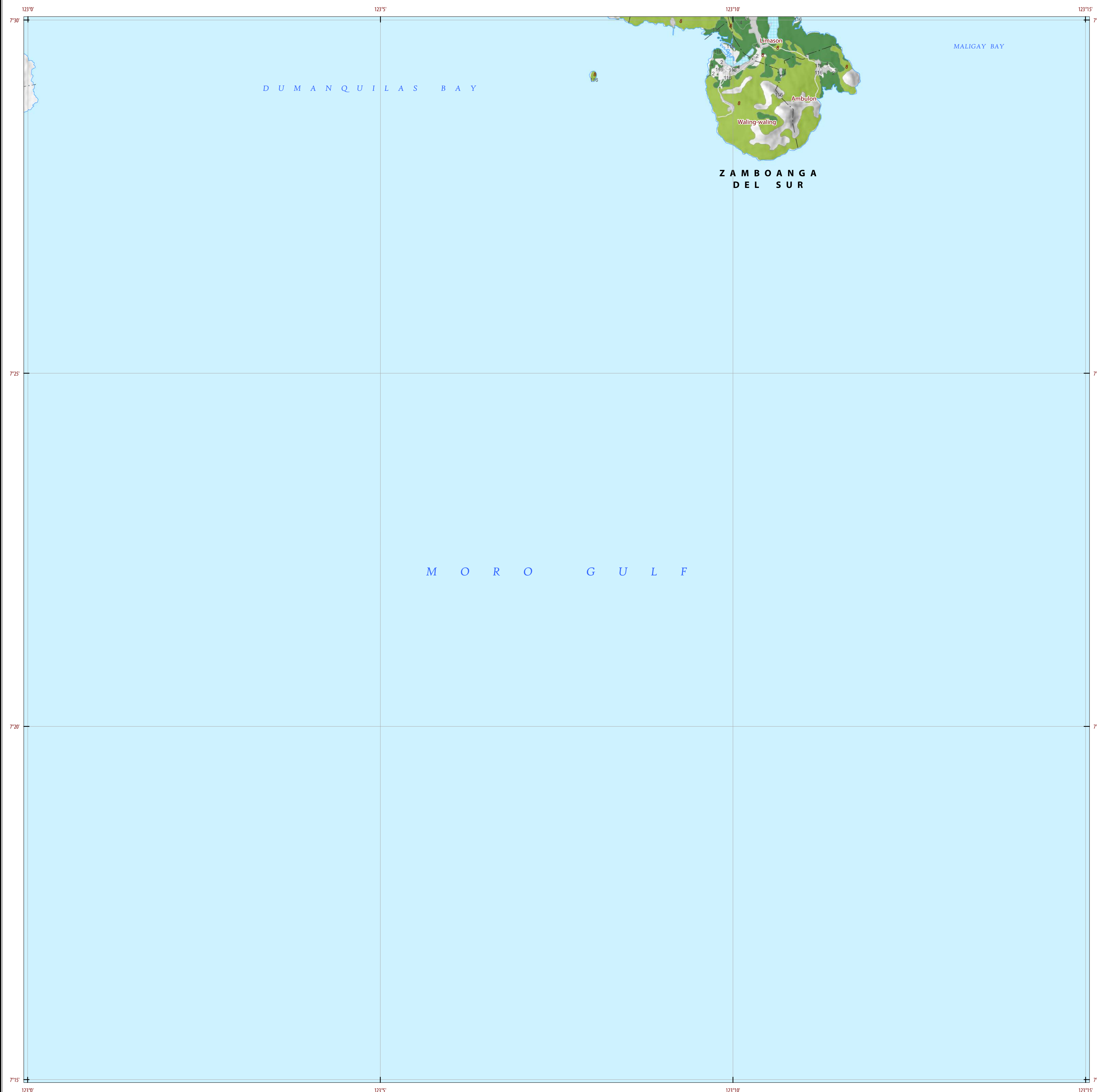
Project Leader : BERNARDO B. PASCUA
GIS and Cartography : IRWIN K. SAMALCA

Funding Agency : Department of Agriculture - Bureau of Agricultural Research (DA-BAR)
Collaborating Agencies : Philippine Council on Agriculture and Fisheries (PCAF)
: Department of Agriculture and Fisheries - ARMM, Department of Agriculture Regional Field Office of Region IX, X, XI, XII and XIII (Caraga)
: Local Government Unit (LGU) of covered provinces and municipalities

Map produced by the Geomatics and Soil Information Technology Division, Bureau of Soils and Water Management (BSWM). Users noting errors or omissions in this publication are requested to inform the Bureau of Soils and Water Management.

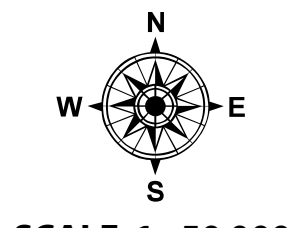
This publication is licensed under a Creative Commons Attribution 4.0 International License. Unless otherwise noted, copyright and any other intellectual property rights, in this publication is owned by the Philippine Government. This publication should be attributed as:
BSWM, 2019. Land Suitability Map Series for Cassava of the PROVINCE OF ZAMBOANGA DEL SUR (50,000 Scale). CC BY-NC-SA 4.0.

REPUBLIC OF THE PHILIPPINES
DEPARTMENT OF AGRICULTURE
BUREAU OF SOILS AND WATER MANAGEMENT
SRDC Bldg, Elliptical Road Cor. Visayas Avenue, Diliman, Quezon City 1101
Tel/Fax No. : (+632) 332-9534 E-mail : bswmcenter@yahoo.com

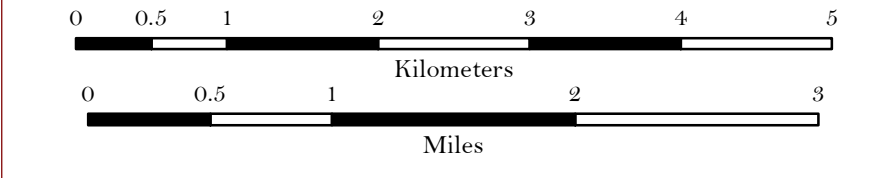


LAND SUITABILITY MAP CASSAVA

LAND RESOURCES EVALUATION AND SUITABILITY ASSESSMENT OF STRATEGIC PRODUCTION AREAS



SCALE 1 : 50 000



Universal Transverse Mercator Zone 51 N, PRS 1992 Datum
DISCLAIMER: All political boundaries are not authoritative.

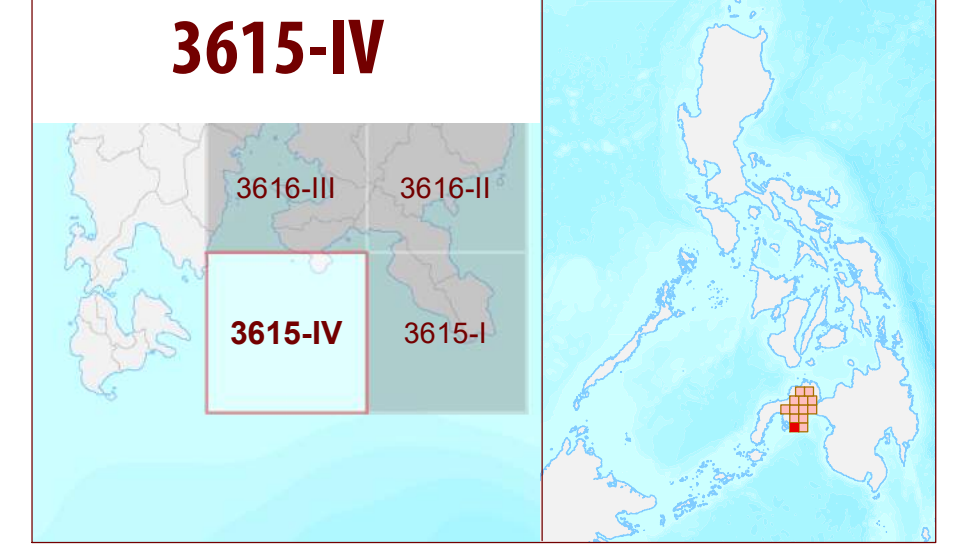
LEGEND

- SUITABILITY CLASSES**
- S1 Highly Suitable** - Land having no significant limitations to sustained application of a given use, or only minor limitations that will not significantly reduce productivity or benefits and will not raise inputs above an acceptable level.
 - S2 Moderately Suitable** - Land having limitations which in aggregate are moderately severe for sustained application of a given use; the limitations will reduce productivity or benefits and increase required inputs to the extent that the overall advantage to be gained from the use, although still attractive, will be appreciably inferior to that expected on class S1 land.
 - S3 Marginally Suitable** - Land having limitations which in aggregate are severe for sustained application of a given use and will so reduce productivity or benefits, or increase required inputs, that this expenditure will be only marginally justified.
 - Not Suitable/ Not Relevant**
- OTHER SIGNS**
- NGP Areas
 - Cacao
 - Land limitation
 - Land use

CONVENTIONAL SIGNS

- ROADS**
- Expressway
 - Trunk line
 - Primary
 - Secondary
 - Tertiary
- BOUNDARY**
- Region
 - Province
 - District
 - Municipality
 - Barangay
- HYDROLOGY**
- Sea / Shoreline
 - Lakes / Rivers
- PLACES**
- Capital City / City
 - Capital Town / Town
- LAND USE**
- Built-up
 - Fishpond
 - Mangrove

ADJOINING SHEETS



MISCELLANEOUS INFORMATION

SOURCES OF INFORMATION : Topographic information taken from NAMRIA Topographic Map at 1:50,000 scale. Land resources information from the Agricultural Land Management and Evaluation Division (ALMED), Soils Survey Division (SSD) and Laboratory Services Division (LSD) of BSWM. Rice areas obtained from the Land Use System (FAO, 2015) and Philippine Rice Information System (PRISM) (IRRI, 2015). Data analysis and compilation through the Land Resources Evaluation and Suitability Assessment of Strategic Production Areas for Major Commodities Project implemented by BSWM (2017).

Project Leader : BERNARDO B. PASCUA
GIS and Cartography : IRWIN K. SAMALCA

Funding Agency : Department of Agriculture - Bureau of Agricultural Research (DA-BAR)
Collaborating Agencies : Philippine Council on Agriculture and Fisheries (PCAF)
: Department of Agriculture and Fisheries - ARMM, Department of Agriculture Regional Field Office of Region IX, X, XI, XII and XIII (Caraga)
: Local Government Unit (LGU) of covered provinces and municipalities

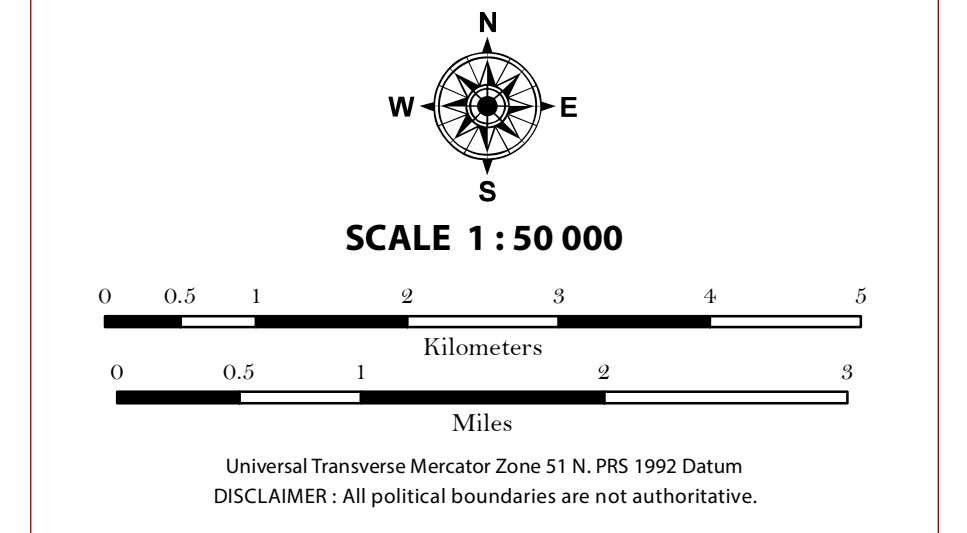
Map produced by the Geomatics and Soil Information Technology Division, Bureau of Soils and Water Management (BSWM).
Users noting errors or omissions in this publication are requested to inform the Bureau of Soils and Water Management.

This publication is licensed under a Creative Commons Attribution 4.0 International License. Unless otherwise noted, copyright and any other intellectual property rights, in this publication is owned by the Philippine Government. This publication should be attributed as:
BSWM, 2019. Land Suitability Map Series for Cassava of the PROVINCE OF ZAMBOANGA DEL SUR (50,000 Scale) - CC BY NC SA 4.0.



LAND SUITABILITY MAP CASSAVA

LAND RESOURCES EVALUATION AND SUITABILITY ASSESSMENT OF STRATEGIC PRODUCTION AREAS



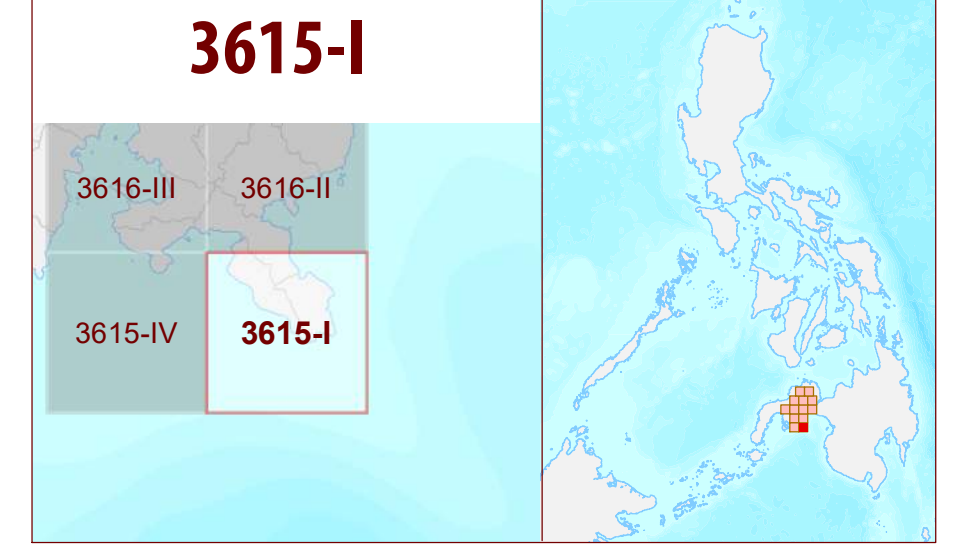
LEGEND

- SUITABILITY CLASSES**
- S1 Highly Suitable** - Land having no significant limitations to sustained application of a given use, or only minor limitations that will not significantly reduce productivity or benefits and will not raise inputs above an acceptable level.
 - S2 Moderately Suitable** - Land having limitations which in aggregate are moderately severe for sustained application of a given use; the limitations will reduce productivity or benefits and increase required inputs to the extent that the overall advantage to be gained from the use, although still attractive, will be appreciably inferior to that expected on class S1 land.
 - S3 Marginally Suitable** - Land having limitations which in aggregate are severe for sustained application of a given use and will so reduce productivity or benefits, or increase required inputs, that this expenditure will be only marginally justified.
- Not Suitable/ Not Relevant**
- OTHER SIGNS**
- NGP Areas
 - Cacao
 - Land limitation
 - Land use

CONVENTIONAL SIGNS

- | | | |
|-----------------|-----------------|---------------------|
| ROADS | BOUNDARY | HYDROLOGY |
| Expressway | Region | Sea / Shoreline |
| Trunk line | Province | Lakes / Rivers |
| Primary | District | PLACES |
| Secondary | Municipality | Capital City / City |
| Tertiary | Barangay | Capital Town / Town |
| LAND USE | | |
| Built-up | Fishpond | Mangrove |

ADJOINING SHEETS



MISCELLANEOUS INFORMATION

SOURCES OF INFORMATION : Topographic information taken from NAMRIA Topographic Map at 1:50,000 scale. Land resources information from the Agricultural Land Management and Evaluation Division (ALMED), Soils Survey Division (SSD) and Laboratory Services Division (LSD) of BSWM. Rice areas obtained from the Land Use System (FAO, 2015) and Philippine Rice Information System (PRISM) (IRRI, 2015). Data analysis and compilation through the Land Resources Evaluation and Suitability Assessment of Strategic Production Areas for Major Commodities Project implemented by BSWM (2017).

Project Leader : BERNARDO B. PASCUA
 GIS and Cartography : IRWIN K. SAMALCA

Funding Agency : Department of Agriculture - Bureau of Agricultural Research (DA-BAR)
 Collaborating Agencies : Philippine Council on Agriculture and Fisheries (PCAF)
 : Department of Agriculture and Fisheries - ARMM, Department of Agriculture Regional Field Office of Region IX, X, XI, XII and XIII (Caraga)
 : Local Government Unit (LGU) of covered provinces and municipalities

Map produced by the Geomatics and Soil Information Technology Division, Bureau of Soils and Water Management (BSWM).
 Users noting errors or omissions in this publication are requested to inform the Bureau of Soils and Water Management.

This publication is licensed under a Creative Commons Attribution 4.0 International License. Unless otherwise noted, copyright and any other intellectual property rights, in this publication is owned by the Philippine Government. This publication should be attributed as:
 BSWM, 2019. Land Suitability Map Series for Cassava of the PROVINCE OF ZAMBOANGA DEL SUR (50,000 Scale). CC BY-NC-SA 4.0.

REPUBLIC OF THE PHILIPPINES
 DEPARTMENT OF AGRICULTURE
 BUREAU OF SOILS AND WATER MANAGEMENT
 SRDC Bldg, Elliptical Road Cor. Visayas Avenue, Diliman, Quezon City 1101
 Tel/Fax No.:(+632) 332-9534 E-mail: bswmcenter@da.gov.ph