

## Greenaleigh Farm, Greenaleigh Farm, Somerset



A stunningly sited property with panoramic views along the Exmoor coast and across the Bristol Channel to Wales

- 4 bedrooms
- 2 holiday letting cottages
- Access to Greenaleigh Beach
- 30 acres held on tenancy
- Former farm buildings

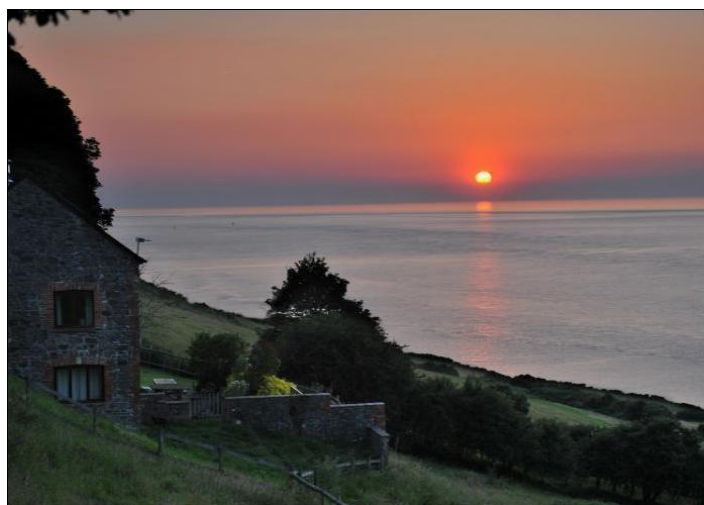
Excess of £1,250,000  
Freehold

**Savills Exeter**

The Forum, Barnfield Road,  
Exeter, Devon, EX1 1QR

**Richard Addington** raddington@savills.com  
+44 (0) 1392 455 755

# Greenaleigh Farm, Greenaleigh Farm, Somerset



# Greenaleigh Farm, Greenaleigh Farm, Somerset

## Mileage

Minehead about 1 mile, Taunton/M5 about 26 miles

otherwise.

For more information please view our legal notice at <http://www.savills.co.uk/legal.html>

## Situation

The Northern edge of Exmoor plunges into the Bristol Channel along a dramatic coastline running west from Minehead. Greenaleigh Farm is situated on a gently sloping shelf surrounded by the magnificent towering wooded hills that form the National park running inland. The house looks out over the pasture, which runs down to the shore line with direct frontage to it including the sandy Greenaleigh beach. The property is approached through the hanging oak woods which form much of the coastline. Leaving all of the activity of Minehead behind, an unmade track leads from the outskirts of the town. After approximately a mile one arrives in this delightfully secluded location with uninterrupted views of the Bristol Channel and Wales clearly beyond. From the property there are a number of paths linking with the South West Coastal Footpath and the ruins of Burgundy Chapel and inland to the Exmoor National Park generally.

## Description

Greenaleigh Farm once formed part of the Dunster Castle estate and was the main dairy farm supplying milk for Minehead. The original farmhouse was probably extended in the 19th Century and has now been divided to provide the main living accommodation with a holiday wing in the original farmhouse, which could be incorporated back into the house if required. The original farm buildings provide storage accommodation and shelter for car parking. One of the original barns has been converted into a detached holiday cottage with its own garden and seating areas also enjoying the wonderful views across the water.

The freehold land around the house and cottages includes gardens and terraces and the vendors have enjoyed the tenancy of the adjoining 30 acres of National Trust ground which they hope to transfer to the purchaser of Greenaleigh Farm.

**Tenure:** Freehold

**Energy Performance:** A copy of the full Energy Performance Certificate is available on request.

**Viewing:** Strictly by appointment with Savills

## Important Notice:

Savills, their clients and any joint agents give notice that:

1. They are not authorised to make or give any representations or warranties in relation to the property either here or elsewhere, either on their own behalf or on behalf of their client or otherwise. They assume no responsibility for any statement that may be made in these particulars. These particulars do not form part of any offer or contract and must not be relied upon as statements or representations of fact.
2. Any areas, measurements or distances are approximate. The text, photographs and plans are for guidance only and are not necessarily comprehensive. It should not be assumed that the property has all necessary planning, building regulation or other consents and Savills have not tested any services, equipment or facilities. Purchasers must satisfy themselves by inspection or

# Greenaleigh Farm, Greenaleigh Farm, Somerset

## Greenaleigh Farm

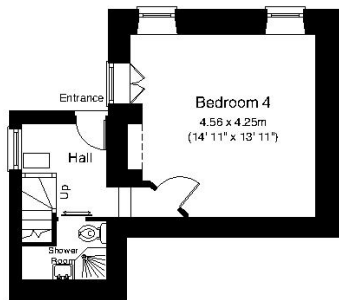
Minehead, Somerset

Gross internal area (approx.)

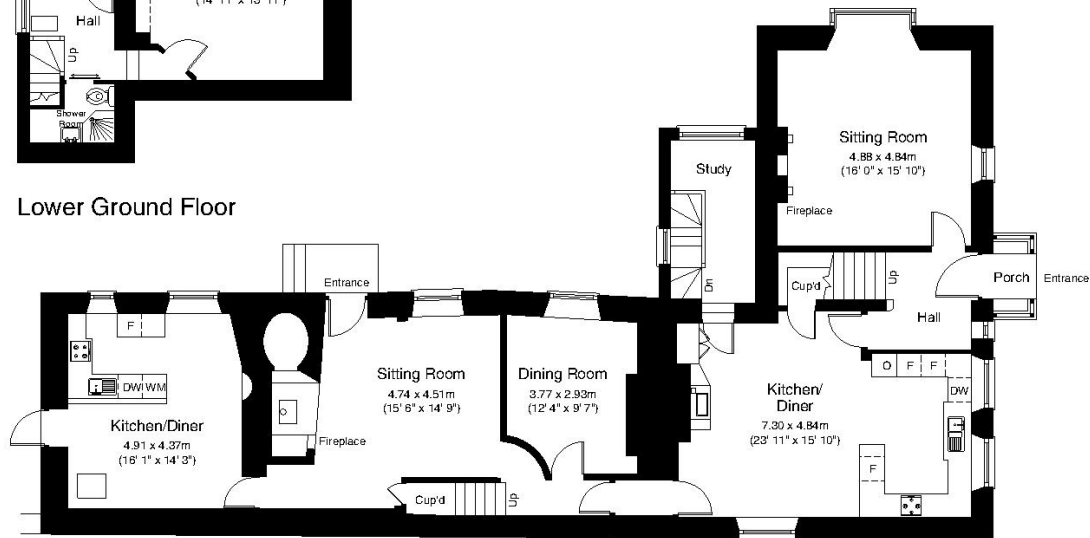
345 m<sup>2</sup> (3,713 ft<sup>2</sup>)

For identification purposes only - Not to scale

www.property-plans.net ©



Lower Ground Floor



Ground Floor

'Old Greenaleigh Farm'

# Greenaleigh Farm, Greenaleigh Farm, Somerset

## Greenaleigh Farm

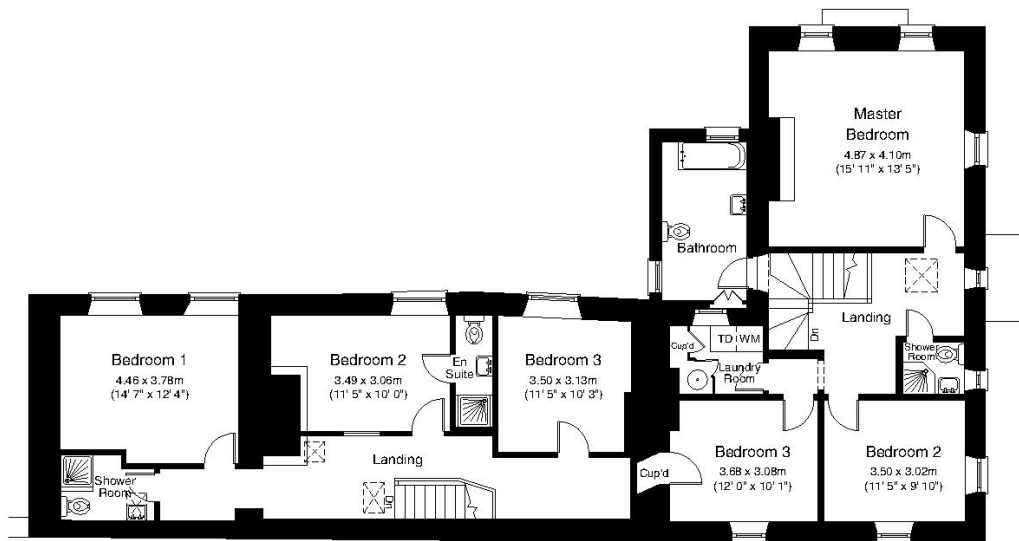
Minehead, Somerset

Gross internal area (approx.)

345 m<sup>2</sup> (3,713 ft<sup>2</sup>)

For identification purposes only - Not to scale

www.property-plans.net ©



First Floor

'Old Greenaleigh Farm'

# Greenaleigh Farm, Greenaleigh Farm, Somerset

## Greenaleigh Farm

Minehead, Somerset

Gross internal area (approx.)

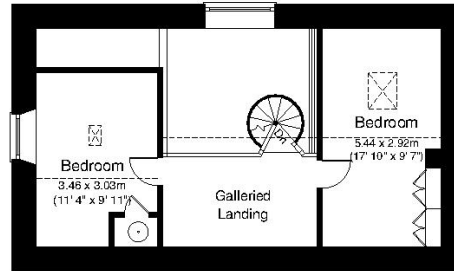
144 m<sup>2</sup> (1,550 ft<sup>2</sup>)

For identification purposes only - Not to scale

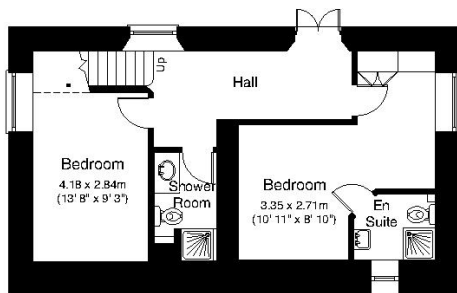
www.property-plans.net ©



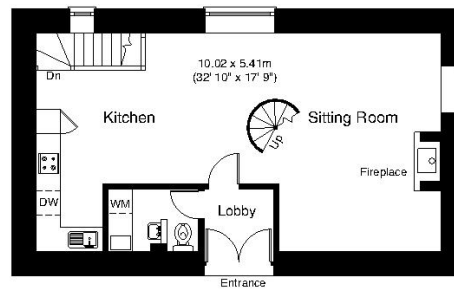
'Greenaleigh Cottage'



First Floor



Lower Ground Floor



Ground Floor