

Contains OS data © Crown copyright and database right 2023. Source: Office for National Statistics licensed under the Open Government Licence v 3.0



Population: 9,459



Households: 3,868



- 99.6% of residents (9,424) live in a household; 0.4% (35) live in a communal establishment.
- 21.1% of residents are aged 65 or over compared to 18.7% for the whole of South Gloucestershire.
- 96.6% of usual residents in Bitton & Oldland Common identify their ethnic group within the high-level “White” category. 3.5% are from a black, Asian, mixed or other ethnic group, compared to 8.8% for the whole of South Gloucestershire.
- There are 1,419 residents (15%) who are disabled under the Equalities Act. This compares to 16.3% for the whole of South Gloucestershire.
- 4% (308) previously served in the UK Armed Forces (including in reserved UK armed forces).



- There are 859 one-person households (22.2%). 11.4% of one-person households are residents aged 66 years and over. 73.5% (2,844) are single family households.
- 43.6% of households (1,688) are deprived in one or more dimensions, compared to 46% for South Gloucestershire.
- 38.8% (1,503) households are owned with a mortgage, loan or shared ownership. 11.1% are privately rented and 7.7% are social rented accommodation. 42.4% (1,639) are owned outright.
- 8.6% of households do not have a car or van compared to the South Gloucestershire wide figure of 12.3%.



- 65% (5,036) of residents aged 16 years and over were economically active in the week leading up to Census 2021. 1.9% were unemployed. 35% (2,710) were economically inactive, including 24.9% who were retired.
- 28.2% of residents aged 16 years and over reported having a degree level qualification or higher (Level 4) with 14.3% stating they had no qualifications.
- 338 residents aged 16 and over (4.4%) classified as full-time students (NS-SEC).

1. Demography and Migration

T1. Sex

	Bitton & Oldland Common	%	South Gos.	%	England & Wales	%
Total usual resident population	9,459	100.0	290,424	100.0	59,597,542	100.0
Male	4,824	51.0	143,769	49.5	29,177,340	49.0
Female	4,635	49.0	146,655	50.5	30,420,202	51.0

Source: ONS - 2021 Census (TS008)¹

T2. Age

	Bitton & Oldland Common	%	South Gos.	%	England & Wales	%
Total usual resident population	9,452	100.0	290,423	100.0	59,597,546	100.0
Aged 4 years and under	487	5.2	16,119	5.6	3,232,036	5.4
Aged 5 to 9 years	553	5.9	17,128	5.9	3,524,627	5.9
Aged 10 to 15 years	671	7.1	19,812	6.8	4,274,508	7.2
Aged 16 to 19 years	397	4.2	13,115	4.5	2,716,186	4.6
Aged 20 to 24 years	450	4.8	18,098	6.2	3,602,128	6.0
Aged 25 to 34 years	1,102	11.7	39,885	13.7	8,050,540	13.5
Aged 35 to 49 years	1,665	17.6	55,813	19.2	11,526,095	19.3
Aged 50 to 64 years	2,139	22.6	56,261	19.4	11,608,079	19.5
Aged 65 to 74 years	1,104	11.7	27,565	9.5	5,923,121	9.9
Aged 75 to 84 years	650	6.9	19,089	6.6	3,685,348	6.2
Aged 85 years and over	234	2.5	7,538	2.6	1,454,878	2.4

Source: ONS - 2021 Census (TS007)²

T3. Residence type

	Bitton & Oldland Common	%	South Gos.	%	England & Wales	%
Total usual resident population	9,459	100.0	9,006	100.0	9,006	100.0
Lives in a household	9,424	99.6	285,030	98.1	58,555,851	98.3
Lives in a communal establishment	35	0.4	5,394	1.9	1,041,691	1.7

Source: ONS - 2021 Census (TS001)³

T4. Number of households

	Bitton & Oldland Common	%	South Gos.	%	England & Wales	%
All households	3,868	100.0	118,101	100.0	24,783,119	100.0

Source: ONS - 2021 Census (TS041)⁴

T5. Household composition

	Bitton & Oldland Common	%	South Glos.	%	England & Wales	%
Total: All households	3,867	100.0	118,101	100.0	24,783,199	100.0
One-person household (total)	859	22.2	30,747	26.0	7,481,788	30.2
Aged 66 years and over	441	11.4	14,375	12.2	3,197,845	12.9
Other	418	10.8	16,372	13.9	4,283,943	17.3
Single family household (total)	2,844	73.5	80,156	67.9	15,613,018	63.0
All aged 66 years and over	501	13.0	12,635	10.7	2,283,288	9.2
Married or civil partnership couple	1,460	37.8	40,524	34.3	7,516,491	30.3
Cohabiting couple family	487	12.6	15,239	12.9	2,864,627	11.6
Lone parent family	382	9.9	11,102	9.4	2,756,737	11.1
Other single family household	14	0.4	656	0.6	191,875	0.8
Other household types (total)	164	4.2	7,198	6.1	1,688,393	6.8
With dependent children	71	1.8	2,368	2.0	656,418	2.6
Other, including all full-time students and all aged 66 years and over	93	2.4	4,830	4.1	1,031,975	4.2

Source: ONS - 2021 Census (TS003)⁵

T6. Household deprivation

	Bitton & Oldland Common	%	South Glos.	%	England & Wales	%
Total: All households	3,870	100.0	118,101	100.0	24,783,199	100.0
Household is not deprived in any dimension	2,182	56.4	63,701	53.9	11,968,324	48.3
Household is deprived in one dimension	1,230	31.8	38,638	32.7	8,292,747	33.5
Household is deprived in two dimensions	403	10.4	13,163	11.1	3,536,076	14.3
Household is deprived in three dimensions	52	1.3	2,454	2.1	928,687	3.7
Household is deprived in four dimensions	3	0.1	145	0.1	57,365	0.2

Source: ONS - 2021 Census (TS011)

Definition of household deprivation

Households in England and Wales were classified in terms of dimensions of deprivation, based on four selected characteristics:

Education: A household is classified as deprived in the education dimension if no one has at least level 2 education and no one aged 16 to 18 years is a full-time student.

Employment: A household is classified in the employment dimension if any member, not a full-time student, is either unemployed or economically inactive due to long-term sickness or disability.

Health: A household is classified as deprived in the health dimension if any person in the household has general health that is bad or very bad or is identified as disabled. People who have assessed their day-to-day activities as limited by long-term physical or mental health conditions or illnesses are considered disabled. This definition of a disabled person meets the harmonised standard for measuring disability and is in line with the Equality Act (2010).

Housing: A household is classified as deprived in the housing dimension if the household's accommodation is either overcrowded, in a shared dwelling, or has no central heating.

T7. Household size

	Bitton & Oldland Common	%	South Glos.	%	England & Wales	%
Total: All household spaces	3,868	100.0	118,101	100.0	24,783,199	100.0
1 person in household	859	22.2	30,747	26.0	7,481,788	30.2
2 people in household	1,526	39.5	42,563	36.0	8,451,403	34.1
3 people in household	676	17.5	19,821	16.8	3,955,168	16.0
4 people in household	615	15.9	17,980	15.2	3,182,251	12.8
5 people in household	147	3.8	5,059	4.3	1,112,752	4.5
6 people in household	31	0.8	1,360	1.2	373,957	1.5
7 people in household	9	0.2	382	0.3	130,727	0.5
8 or more people in household	5	0.1	189	0.2	95,153	0.4

Source: ONS - 2021 Census (TS017)⁶

T8. Living arrangements

	Bitton & Oldland Common	%	South Glos.	%	England & Wales	%
All usual residents aged 16 and over	7,713	100.0	231,986	100.0	47,559,763	100.0
Living in a couple	5,143	66.7	146,549	63.2	27,503,868	57.8
Not living in a couple	2,570	33.3	85,437	36.8	20,055,895	42.2

Source: ONS - 2021 Census (TS010)⁷

T9. Legal partnership status

	Bitton & Oldland Common	%	South Glos.	%	England & Wales	%
All usual residents aged 16 and over	7,741	100.0	237,366	100.0	48,566,373	100.0
Never married and never registered a civil partnership	2,377	30.7	85,114	35.9	18,401,778	37.9
Married or in a registered civil partnership	4,061	52.5	113,593	47.9	21,683,101	44.6
Separated, but still legally married or still legally in a civil partnership	142	1.8	4,362	1.8	1,085,987	2.2
Divorced or civil partnership dissolved	720	9.3	20,521	8.6	4,424,346	9.1
Widowed or surviving civil partnership partner	441	5.7	13,776	5.8	2,971,161	6.1

Source: ONS - 2021 Census (TS002)⁸

T10. Country of birth

	Bitton & Oldland Common	%	South Glos.	%	England & Wales	%
Total usual resident population	9,459	100.0	290,424	100.0	59,597,542	100.0
Europe	9,264	97.9	274,565	94.5	53,722,544	90.1
United Kingdom	9,057	95.8	259,756	89.4	49,579,570	83.2
EU countries	192	2.0	13,490	4.6	3,643,242	6.1
Europe: Non-EU countries	15	0.2	1,319	0.5	499,732	0.8
Africa	69	0.7	4,356	1.5	1,584,575	2.7
Middle East and Asia	66	0.7	8,488	2.9	3,311,030	5.6
The Americas and the Caribbean	33	0.3	2,365	0.8	785,754	1.3
Antarctica and Oceania (including Australasia) and Other	27	0.3	561	0.2	172,547	0.3
British Overseas	0	0.0	89	0.0	21,092	0.0

Source: ONS - 2021 Census (TS004)⁹

T11. Length of residence in the UK

	Bitton & Oldland Common	%	South Glos.	%	England & Wales	%
Total usual resident population	9,456	100.0	290,424	100.0	59,597,542	100.0
Born in the UK	9,057	95.8	259,756	89.4	49,579,570	83.2
10 years or more	267	2.8	16,321	5.6	5,834,889	9.8
5 years or more, but less than 10 years	66	0.7	6,070	2.1	1,735,314	2.9
2 years or more, but less than 5 years	26	0.3	4,430	1.5	1,322,160	2.2
Less than 2 years	40	0.4	3,847	1.3	1,125,609	1.9

Source: ONS - 2021 Census (TS016)¹⁰

T12. Passports held

	Bitton & Oldland Common	%	South Glos.	%	England & Wales	%
Total usual resident population	9,457	100.0	290,426	100.0	59,597,538	100.0
Europe	8,262	87.4	248,432	85.5	49,745,555	83.5
Africa	8	0.1	1,368	0.5	378,306	0.6
Middle East and Asia	21	0.2	3,211	1.1	1,076,219	1.8
The Americas and the Caribbean	12	0.1	908	0.3	300,267	0.5
Antarctica and Oceania, including Australasia	10	0.1	193	0.1	76,872	0.1
British Overseas Territories	0	0.0	0	0.0	639	0.0
No passport held	1,144	12.1	36,314	12.5	8,019,680	13.5

Source: ONS - 2021 Census (TS005)¹¹

2. Ethnicity, Identity, Language and Religion

T13. Ethnicity

Ethnic Group	Bitton & Oldland Common	%	South Glos.	%	England & Wales	%
Total usual resident population	9,457	100.0	290,424	100.0	59,597,542	100.0
Asian, Asian British or Asian Welsh - Total	91	1.0	11,094	3.8	5,515,420	9.3
Bangladeshi	6	0.1	581	0.2	644,881	1.1
Chinese	18	0.2	2,113	0.7	445,619	0.7
Indian	34	0.4	4,867	1.7	1,864,318	3.1
Pakistani	5	0.1	1,352	0.5	1,587,819	2.7
Other Asian	28	0.3	2,181	0.8	972,783	1.6
Black, Black British, Black Welsh, Caribbean or African - Total	64	0.7	4,534	1.6	2,409,278	4.0
African	36	0.4	2,787	1.0	1,488,381	2.5
Caribbean	21	0.2	1,219	0.4	623,119	1.0
Other Black	7	0.1	528	0.2	297,778	0.5
Mixed or Multiple ethnic groups - Total	151	1.6	7,289	2.5	1,717,976	2.9
White and Asian	33	0.3	1,953	0.7	488,225	0.8
White and Black African	22	0.2	905	0.3	249,596	0.4
White and Black Caribbean	62	0.7	2,711	0.9	513,042	0.9
Other Mixed or Multiple ethnic groups	34	0.4	1,720	0.6	467,113	0.8
White - Total	9,133	96.6	264,856	91.2	48,699,249	81.7
English, Welsh, Scottish, Northern Irish or British	8,911	94.2	249,160	85.8	44,355,038	74.4
Irish	33	0.3	1,327	0.5	507,465	0.9
Gypsy or Irish Traveller	6	0.1	443	0.2	67,768	0.1
Roma	9	0.1	373	0.1	100,981	0.2
Other White	174	1.8	13,553	4.7	3,667,997	6.2
Other ethnic group - Total	18	0.2	2,651	0.9	1,255,619	2.1
Arab	4	0.0	751	0.3	331,844	0.6
Any other ethnic group	14	0.1	1,900	0.7	923,775	1.6

Source: ONS - 2021 Census (TS021)¹²

T14. National identity

	Bitton & Oldland Common	%	South Glos.	%	England & Wales	%
Total usual resident population	9,459	100.0	290,422	100.0	59,597,541	100.0
British only identity	5,583	59.0	163,084	56.2	32,677,619	54.8
English only identity	1,721	18.2	47,155	16.2	8,898,728	14.9
English and British only identity	1,700	18.0	50,087	17.2	8,112,809	13.6
Welsh only identity	63	0.7	2,976	1.0	1,908,644	3.2
Welsh and British only identity	38	0.4	1,499	0.5	337,607	0.6
Any other combination of only UK identities	60	0.6	2,760	1.0	707,985	1.2
Non-UK identity only	213	2.3	18,220	6.3	5,761,564	9.7
UK identity and non-UK identity	81	0.9	4,641	1.6	1,192,585	2.0

Source: ONS - 2021 Census (TS027)¹³

T15. Religion

	Bitton & Oldland Common	%	South Glos.	%	England & Wales	%
Total usual resident population	9,457	100.0	290,425	100.0	59,597,540	100.0
No religion	4,403	46.6	133,749	46.1	22,162,062	37.2
Christian	4,339	45.9	128,014	44.1	27,522,672	46.2
Buddhist	22	0.2	1,056	0.4	272,508	0.5
Hindu	13	0.1	2,896	1.0	1,032,775	1.7
Jewish	6	0.1	173	0.1	271,327	0.5
Muslim	30	0.3	4,720	1.6	3,868,133	6.5
Sikh	12	0.1	1,006	0.3	524,140	0.9
Other religion	49	0.5	1,319	0.5	348,334	0.6
Not answered	583	6.2	17,492	6.0	3,595,589	6.0

Source: ONS - 2021 Census (TS030)¹⁴

T16. Household language

	Bitton & Oldland Common	%	South Glos.	%	England & Wales	%
Total: All households	3,870	100.0	118,101	100.0	24,783,199	100.0
All adults in household have English in England, or English or Welsh in Wales as a main language	3,797	98.1	110,714	93.7	22,215,902	89.6
At least one but not all adults in household have English in England, or English or Welsh in Wales as a main language	33	0.9	2,893	2.4	1,036,736	4.2
No adults in household, but at least one person aged 3 to 15 years, has English in England or English or Welsh in Wales as a main language	8	0.2	1,018	0.9	330,002	1.3
No people in household have English in England, or English or Welsh in Wales as a main language	32	0.8	3,476	2.9	1,200,559	4.8

Source: ONS - 2021 Census (TS025)¹⁵

3. Health, Disability and Unpaid Care

T17. General health

	Bitton & Oldland Common	%	South Glos.	%	England & Wales	%
Total usual resident population	9,458	100.0	290,424	100.0	59,597,542	100.0
Very good health	4,666	49.3	144,395	49.7	28,827,308	48.4
Good health	3,308	35.0	99,207	34.2	20,046,220	33.6
Fair health	1,100	11.6	34,595	11.9	7,597,001	12.7
Bad health	300	3.2	9,529	3.3	2,412,358	4.0
Very bad health	84	0.9	2,698	0.9	714,655	1.2

Source: ONS - 2021 Census (TS037)¹⁶

T18. Disability

	Bitton & Oldland Common	%	South Glos.	%	England & Wales	%
Total usual resident population	9,457	100.0	290,423	100.0	59,597,542	100.0
Total: Disabled under the Equality Act	1,419	15.0	47,429	16.3	10,444,776	17.5
Disabled under the Equality Act: Day-to-day activities limited a lot	535	5.7	18,212	6.3	4,459,763	7.5
Disabled under the Equality Act: Day-to-day activities limited a little	884	9.3	29,217	10.1	5,985,013	10.0
Total: Not disabled under the Equality Act	8,038	85.0	242,994	83.7	49,152,766	82.5
Not disabled under the Equality Act: Has long term physical or mental health condition but day-to-day activities are not limited	712	7.5	22,016	7.6	4,062,569	6.8
Not disabled under the Equality Act: No long-term physical or mental health conditions	7,326	77.5	220,978	76.1	45,090,197	75.7

Source: ONS - 2021 Census (TS038)¹⁷

T19. Provision of unpaid care by number of hours

	Bitton & Oldland Common	%	South Glos.	%	England & Wales	%
Total: All usual residents aged 5 and over	8,970	100.0	274,305	100.0	56,365,506	100.0
Provides no unpaid care	8,117	90.5	250,653	91.4	51,376,490	91.1
Provides 19 hours or less unpaid care a week	497	5.5	13,007	4.7	2,442,050	4.3
Provides 9 hours or less unpaid care a week	357	4.0	9,668	3.5	1,764,549	3.1
Provides 10 to 19 hours unpaid care a week	140	1.6	3,339	1.2	677,501	1.2
Provides 20 to 49 hours unpaid care a week	146	1.6	4,204	1.5	1,035,366	1.8
Provides 20 to 34 hours unpaid care a week	77	0.9	2,088	0.8	483,300	0.9
Provides 35 to 49 hours unpaid care a week	69	0.8	2,116	0.8	552,066	1.0
Provides 50 or more hours unpaid care a week	210	2.3	6,441	2.3	1,511,600	2.7

Source: ONS - 2021 Census (TS039)¹⁸

4. Labour market

T20. Employment history

	Bitton & Oldland Common	%	South Glos.	%	England & Wales	%
Total: All usual residents aged 16 years and over not in employment the week before the census	2,856	100.0	89,754	100.0	20,792,707	100.0
Not in employment: Worked in the last 12 months	358	12.5	12,945	14.4	2,729,755	13.1
Not in employment: Not worked in the last 12 months	2,023	70.8	60,322	67.2	12,762,983	61.4
Not in employment: Never worked	475	16.6	16,487	18.4	5,299,969	25.5

Source: ONS - 2021 Census (TS065)¹⁹

T21. Economic activity

Economic activity	Bitton & Oldland Common	%	South Glos.	%	England & Wales	%
Total: All usual residents aged 16 years and over	7,746	100.0	237,366	100.0	48,566,371	100.0
Economically active (excluding full-time students)	4,914	63.4	147,707	62.2	28,336,631	58.3
In employment	4,799	62.0	143,392	60.4	26,960,268	55.5
Unemployed	115	1.5	4,315	1.8	1,376,363	2.8
Economically active and a full-time student	122	1.6	5,759	2.4	1,112,219	2.3
In employment	92	1.2	4,220	1.8	813,397	1.7
Unemployed	30	0.4	1,539	0.6	298,822	0.6
Economically inactive	2,710	35.0	83,900	35.3	19,117,521	39.4
Retired	1,929	24.9	53,153	22.4	10,513,713	21.6
Student	224	2.9	11,240	4.7	2,740,634	5.6
Looking after home or family	222	2.9	7,439	3.1	2,317,340	4.8
Long-term sick or disabled	178	2.3	6,581	2.8	2,025,621	4.2
Other	157	2.0	5,487	2.3	1,520,213	3.1

Source: ONS - 2021 Census (TS066)²⁰

T22. Highest level of qualification

	Bitton & Oldland Common	%	South Glos.	%	England & Wales	%
Total: All usual residents aged 16 years and over	7,746	100.0	237,364	100.0	48,566,373	100.0
No qualifications	1,107	14.3	33,792	14.2	8,827,472	18.2
Level 1 and entry level qualifications	851	11.0	23,996	10.1	4,679,223	9.6
Level 2 qualifications	1,245	16.1	33,959	14.3	6,493,490	13.4
Apprenticeship	635	8.2	15,142	6.4	2,590,252	5.3
Level 3 qualifications	1,542	19.9	46,440	19.6	8,225,629	16.9
Level 4 qualifications or above	2,188	28.2	78,233	33.0	16,413,231	33.8
Other qualifications	178	2.3	5,802	2.4	1,337,076	2.8

Source: ONS - 2021 Census (TS067)

The highest level of qualification is derived from the question asking people to indicate all qualifications held, or their nearest equivalent. This may include foreign qualifications where they were matched to the closest UK equivalent. The types of qualification included in each level are:

Level 1 and entry level qualifications: 1 to 4 GCSEs grade A* to C , Any GCSEs at other grades, O levels or CSEs (any grades), 1 AS level, NVQ level 1, Foundation GNVQ, Basic or Essential Skills;

Level 2 qualifications: 5 or more GCSEs (A* to C or 9 to 4), O levels (passes), CSEs (grade 1), School Certification, 1 A level, 2 to 3 AS levels, VCEs, Intermediate or Higher Diploma, Welsh Baccalaureate Intermediate Diploma, NVQ level 2, Intermediate GNVQ, City and Guilds Craft, BTEC First or General Diploma, RSA Diploma;

Level 3 qualifications: 2 or more A levels or VCEs, 4 or more AS levels, Higher School Certificate, Progression or Advanced Diploma, Welsh Baccalaureate Advance Diploma, NVQ level 3; Advanced GNVQ, City and Guilds Advanced Craft, ONC, OND, BTEC National, RSA Advanced Diploma;

Level 4 qualifications or above: degree (BA, BSc), higher degree (MA, PhD, PGCE), NVQ level 4 to 5, HNC, HND, RSA Higher Diploma, BTEC Higher level, professional qualifications (for example, teaching, nursing, accountancy); Other qualifications: vocational or work-related qualifications, other qualifications achieved in England or Wales, qualifications achieved outside England or Wales (equivalent not stated or unknown). There are quality considerations about higher education qualifications, including those at Level 4+, responses from older people and international migrants, and comparability with 2011 Census data.

5. Work and Travel

Note on the Covid-19 pandemic

Each census is a unique snapshot in time and this census was conducted in March 2021. At the time, England and Wales was in the middle of a period of lockdown due to the ongoing impact of the coronavirus pandemic. During this period, our working patterns were impacted due to the national lockdown whilst a significant proportion of the workforce were on furlough. Many people were also working from home for the first time as organisations responded to the latest government guidance. However, this was a period when the government advice was for people to stay at home and only attend work if there was no alternative. Many people were still on furlough and, whilst there was guidance on how to complete the questions, it is not clear whether people may have also answered based on a period before the pandemic.

Since the time the census data was collated, the workforce is still adjusting to new ways of working, hybrid working, and many people will also have changed jobs or left the workforce in this time.

T23. Hours worked

	Bitton & Oldland Common	%	South Glos.	%	England & Wales	%
Total: All usual residents aged 16 years and over in employment the week before the census	4,890	100.0	147,612	100.0	27,773,665	100.0
Part-time	1,617	33.1	43,784	29.7	8,281,004	29.8
15 hours or less worked	511	10.4	14,192	9.6	2,855,066	10.3
16 to 30 hours worked	1,106	22.6	29,592	20.0	5,425,938	19.5
Full-time	3,273	66.9	103,828	70.3	19,492,661	70.2
31 to 48 hours worked	2,815	57.6	90,398	61.2	16,427,651	59.1
49 or more hours worked	458	9.4	13,430	9.1	3,065,010	11.0

Source: ONS - 2021 Census (TS059)²¹

T24. Occupation

	Bitton & Oldland Common	%	South Glos.	%	England & Wales	%
Total: All usual residents aged 16 years and over in employment the week before the census	4,891	100.0	147,612	100.0	27,773,667	100.0
1. Managers, directors and senior officials	685	14.0	17,918	12.1	3,547,854	12.8
2. Professional occupations	902	18.4	31,300	21.2	5,606,115	20.2
3. Associate professional and technical occupations	614	12.6	19,437	13.2	3,661,022	13.2
4. Administrative and secretarial occupations	613	12.5	17,372	11.8	2,574,681	9.3
5. Skilled trades occupations	629	12.9	16,114	10.9	2,849,754	10.3
6. Caring, leisure and other service occupations	435	8.9	12,405	8.4	2,600,177	9.4
7. Sales and customer service occupations	367	7.5	10,669	7.2	2,087,112	7.5
8. Process, plant and machine operatives	271	5.5	8,855	6.0	1,940,141	7.0
9. Elementary occupations	375	7.7	13,542	9.2	2,906,811	10.5

Source: ONS - 2021 Census (TS063)²²

T25. Industry

	Bitton & Oldland Common	%	South Gos.	%	England & Wales	%
Total: All usual residents aged 16 years and over in employment the week before the census	4,896	100.0	147,615	100.0	27,773,661	100.0
A: Agriculture, Forestry and fishing	19	0.4	782	0.5	237,049	0.9
B: Mining and quarrying	2	0.0	191	0.1	42,699	0.2
C: Manufacturing	300	6.1	10,680	7.2	2,040,203	7.3
D: Electricity, gas, steam and air conditioning supply	49	1.0	996	0.7	161,604	0.6
E: Water supply; Sewerage, Waste management and Remediation activities	74	1.5	1,179	0.8	203,710	0.7
F: Construction	590	12.1	14,447	9.8	2,406,228	8.7
G: Wholesale and retail trade; repair of motor vehicles and motorcycles	729	14.9	22,013	14.9	4,156,299	15.0
H: Transport and storage	199	4.1	7,297	4.9	1,381,362	5.0
I: Accommodation and food service activities	183	3.7	5,463	3.7	1,362,991	4.9
J: Information and communication	196	4.0	7,264	4.9	1,283,997	4.6
K: Financial and insurance activities	227	4.6	7,394	5.0	1,046,740	3.8
L: Real estate activities	97	2.0	2,093	1.4	430,490	1.5
M: Professional, scientific and technical activities	313	6.4	9,239	6.3	1,828,909	6.6
N: Administrative and support service activities	210	4.3	7,287	4.9	1,457,167	5.2
O: Public administration and defence; compulsory social security	358	7.3	11,824	8.0	1,646,592	5.9
P: Education	431	8.8	13,387	9.1	2,732,876	9.8
Q: Human health and social work activities	711	14.5	20,512	13.9	4,089,373	14.7
R, S, T, U Other	208	4.2	5,567	3.8	1,265,372	4.6

Source: ONS - 2021 Census (TS060)²³

T26. Method used to travel to work

	Bitton & Oldland Common	%	South Gos.	%	England & Wales	%
Total: All usual residents aged 16 years and over in employment the week before the census	4,889	100.0	147,610	100.0	27,773,666	100.0
Work mainly at or from home	1,658	33.9	52,349	35.5	8,671,722	31.2
Underground, metro, light rail, tram	2	0.0	40	0.0	505,311	1.8
Train	13	0.3	438	0.3	529,461	1.9
Bus, minibus or coach	97	2.0	4,442	3.0	1,160,990	4.2
Taxi	7	0.1	276	0.2	200,490	0.7
Motorcycle, scooter or moped	36	0.7	968	0.7	128,849	0.5
Driving a car or van	2,581	52.8	71,696	48.6	12,524,571	45.1
Passenger in a car or van	152	3.1	4,890	3.3	1,083,447	3.9
Bicycle	93	1.9	3,060	2.1	569,295	2.0
On foot	208	4.3	8,371	5.7	2,113,657	7.6
Other method of travel to work	42	0.9	1,080	0.7	285,873	1.0

Source: ONS - 2021 Census (TS061)²⁴

T27. National Statistic Social Economic Classification (NS-SeC)

	Bitton & Oldland Common	%	South Glos.	%	England & Wales	%
Total: All usual residents aged 16 years and over	7,745	100.0	237,366	100.0	48,566,373	100.0
L1, L2 and L3 Higher managerial, administrative and professional occupations	1,135	14.7	35,126	14.8	6,353,898	13.1
L4, L5 and L6 Lower managerial, administrative and professional occupations	1,687	21.8	51,723	21.8	9,669,812	19.9
L7 Intermediate occupations	1,138	14.7	32,883	13.9	5,551,417	11.4
L8 and L9 Small employers and own account workers	929	12.0	23,026	9.7	5,131,554	10.6
L10 and L11 Lower supervisory and technical occupations	441	5.7	13,120	5.5	2,620,604	5.4
L12 Semi-routine occupations	937	12.1	26,470	11.2	5,518,715	11.4
L13 Routine occupations	794	10.3	26,622	11.2	5,859,961	12.1
L14.1 and L14.2 Never worked and long-term unemployed	346	4.5	11,843	5.0	4,133,958	8.5
L15 Full-time students	338	4.4	16,553	7.0	3,726,454	7.7

Source: ONS - 2021 Census (TS062)²⁵

6. Housing

T28. Accommodation type

	Bitton & Oldland Common	%	South Glos.	%	England & Wales	%
Total: All households	3,869	100.0	118,101	100.0	24,783,200	100.0
Detached	1,168	30.2	31,401	26.6	5,753,255	23.2
Semi-detached	1,502	38.8	40,784	34.5	7,810,175	31.5
Terraced	899	23.2	30,133	25.5	5,739,467	23.2
In a purpose-built block of flats or tenement	222	5.7	12,339	10.4	4,126,433	16.7
Part of a converted or shared house, including bedsits	35	0.9	1,515	1.3	845,606	3.4
Part of another converted building, for example, former school, church or warehouse	15	0.4	472	0.4	195,546	0.8
In a commercial building, for example, in an office building, hotel or over a shop	13	0.3	672	0.6	208,456	0.8
A caravan or other mobile or temporary structure	15	0.4	785	0.7	104,262	0.4

Source: ONS - 2021 Census (TS044)

T29. Tenure of household

	Bitton & Oldland Common	%	South Glos.	%	England & Wales	%
Total: All households	3,867	100.0	118,101	100.0	24,783,199	100.0
Owned	3,125	80.8	85,492	72.4	15,258,981	61.6
Owns outright	1,639	42.4	43,220	36.6	8,136,782	32.8
Owns with a mortgage or loan	1,486	38.4	42,272	35.8	7,122,199	28.7
Shared ownership	17	0.4	1,231	1.0	240,234	1.0
Social rented	297	7.7	12,738	10.8	4,227,756	17.1
Rents from council or Local Authority	35	0.9	2,122	1.8	2,061,789	8.3
Social rented: Other social rented	262	6.8	10,616	9.0	2,165,967	8.7
Private rented	428	11.1	18,588	15.7	5,023,531	20.3
Private landlord or letting agency	367	9.5	16,441	13.9	4,468,534	18.0
Other private rented	61	1.6	2,147	1.8	554,997	2.2
Lives rent free	0	0.0	52	0.0	32,697	0.1

Source: ONS - 2021 Census (TS054)²⁶

T30. Number of bedrooms

	Bitton & Oldland Common	%	South Glos.	%	England & Wales	%
Total: All households	3,868	100.0	118,101	100.0	24,783,199	100.0
1 bedroom	165	4.3	9,363	7.9	2,826,033	11.4
2 bedrooms	808	20.9	25,231	21.4	6,715,736	27.1
3 bedrooms	1,834	47.4	52,165	44.2	10,019,713	40.4
4 or more bedrooms	1,061	27.4	31,342	26.5	5,221,717	21.1

Source: ONS - 2021 Census (TS050)

T31. Number of rooms (VOA)

	Bitton & Oldland Common	%	South Glos.	%	England & Wales	%
Total: All households	3,868	100.0	118,101	100.0	24,783,197	100.0
1 room	5	0.1	442	0.4	260,360	1.1
2 rooms	122	3.2	8,421	7.1	2,435,589	9.8
3 rooms	635	16.4	21,593	18.3	5,716,952	23.1
4 rooms	1,378	35.6	30,096	25.5	6,897,000	27.8
5 rooms	1,003	25.9	36,962	31.3	5,742,998	23.2
6 rooms	497	12.8	13,454	11.4	2,165,070	8.7
7 rooms	137	3.5	5,023	4.3	920,198	3.7
8 rooms	61	1.6	1,374	1.2	367,001	1.5
9 or more rooms	30	0.8	736	0.6	278,029	1.1

Source: ONS - 2021 Census (TS051)

Note: In a change from previous censuses, Census21 used Valuation Office Agency (VOA) data to count the number of rooms in a dwelling. All rooms in a dwelling apart from bathrooms, toilets, halls or landings, kitchens, conservatories or utility rooms are counted. If two rooms have been converted into one, they are counted as one room. For households living in a shared dwelling, the number of rooms are counted for the whole dwelling and not the individual household. More information on data collection and methodology can be found on the [ONS website](#).

T32. Occupancy rating for bedrooms

	Bitton & Oldland Common	%	South Glos.	%	England & Wales	%
Total: All households	3,869	100.0	118,101	100.0	24,783,199	100.0
Occupancy rating of bedrooms: +2 or more	1,825	47.2	51,532	43.6	8,902,471	35.9
Occupancy rating of bedrooms: +1	1,287	33.3	38,504	32.6	8,258,721	33.3
Occupancy rating of bedrooms: 0	686	17.7	25,456	21.6	6,567,584	26.5
Occupancy rating of bedrooms: -1	65	1.7	2,327	2.0	880,672	3.6
Occupancy rating of bedrooms: -2 or less	6	0.2	282	0.2	173,751	0.7

Source: ONS - 2021 Census (TS052)

Note: Occupancy rating provides a measure of whether a household's accommodation is overcrowded or under-occupied. An occupancy rating of negative 1 or less implies that a household has fewer bedrooms than the standard requirement, positive 1 implies that they have more bedrooms than required, and 0 implies that they met the standard required.

T33. Central heating

	Bitton & Oldland Common	%	South Glos.	%	England & Wales	%
Total: All households	3,867	100.0	118,101	100.0	24,783,199	100.0
No central heating	35	0.9	1,081	0.9	367,132	1.5
Mains gas only	3,108	80.4	91,075	77.1	18,298,725	73.8
Tank or bottled gas only	19	0.5	1,257	1.1	260,102	1.0
Electric only	195	5.0	8,640	7.3	2,113,111	8.5
Oil only	143	3.7	4,652	3.9	865,940	3.5
Wood only	10	0.3	147	0.1	35,723	0.1
Solid fuel only	4	0.1	163	0.1	49,459	0.2
Renewable energy only	13	0.3	487	0.4	98,732	0.4
District or communal heat networks only	0	0.0	442	0.4	220,917	0.9
Other central heating only	14	0.4	507	0.4	225,381	0.9
Two or more types of central heating (not including renewable energy)	304	7.9	8,960	7.6	2,113,325	8.5
Two or more types of central heating (including renewable energy)	22	0.6	690	0.6	134,652	0.5

Source: ONS - 2021 Census (TS046)²⁷

T34. Car or van availability

	Bitton & Oldland Common	%	South Glos.	%	England & Wales	%
Total: All households	3,868	100.0	118,101	100.0	24,783,199	100.0
No cars or vans in household	334	8.6	14,585	12.3	5,777,957	23.3
1 car or van in household	1,457	37.7	47,411	40.1	10,236,898	41.3
2 cars or vans in household	1,460	37.7	40,325	34.1	6,485,738	26.2
3 or more cars or vans in household	617	16.0	15,780	13.4	2,282,606	9.2

Source: ONS - 2021 Census (TS045)²⁸

7. Armed forces

T35. Previously served in the armed forces

	Bitton & Oldland Common	%	South Glos.	%	England & Wales	%
Total: All usual residents aged 16 and over	7,745	100.0	237,366	100.0	48,566,373	100.0
Previously served in UK regular armed forces	224	2.9	6,970	2.9	1,413,296	2.9
Previously served in UK reserve armed forces	71	0.9	2,124	0.9	360,770	0.7
Previously served in both regular and reserve UK armed forces	13	0.2	404	0.2	79,046	0.2
Has not previously served in any UK armed forces	7,437	96.0	227,868	96.0	46,713,261	96.2

Source: ONS - 2021 Census (TS071)²⁹

T36. Number of people in the household who have previously served in UK armed forces

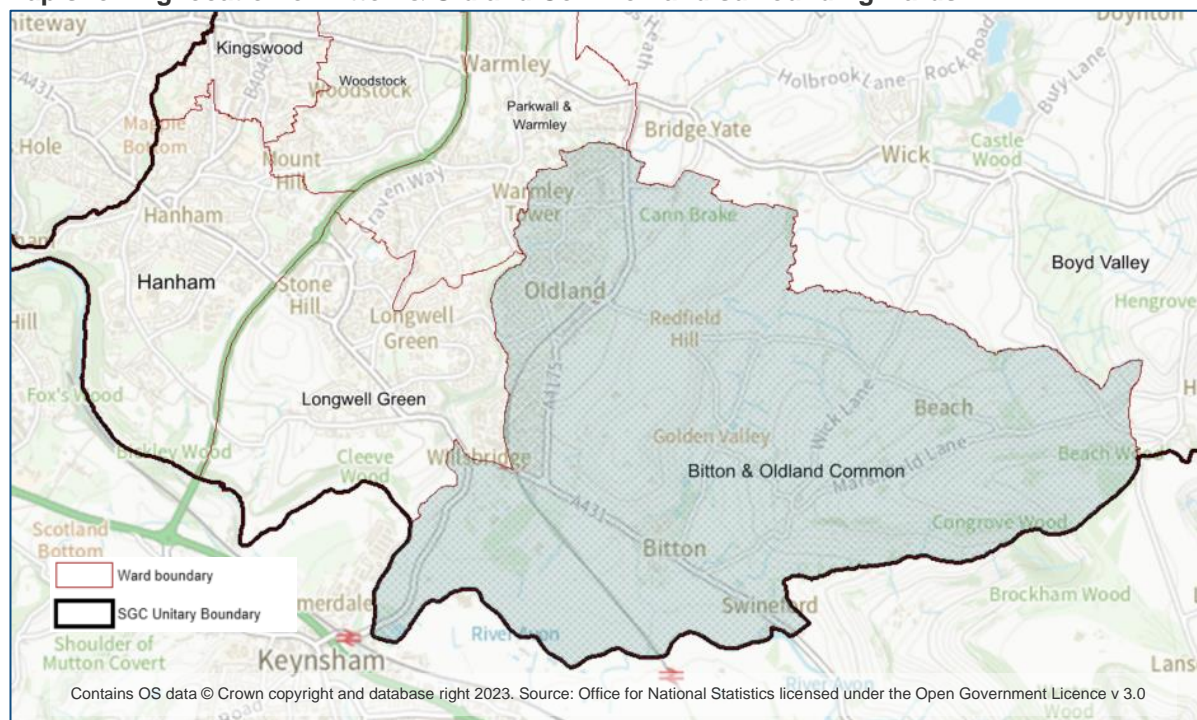
	Bitton & Oldland Common	%	South Glos.	%	England & Wales	%
Total: All households	3,868	100.0	118,101	100.0	24,783,199	100.0
No people in the household previously served in UK armed forces	3,575	92.4	109,218	92.5	23,038,121	93.0
1 person in the household previously served in UK armed forces	285	7.4	8,534	7.2	1,675,603	6.8
2 people in the household previously served in UK armed forces	8	0.2	341	0.3	67,714	0.3
3 or more people in the household previously served in UK armed forces	0	0.0	8	0.0	1,761	0.0

Source: ONS - 2021 Census (TS072)

Bitton & Oldland Common geography

Bitton & Oldland Common sits on the South Gloucestershire border, adjacent to the wards of Boyd Valley, Longwell Green and Parkwall & Warmley.

Map showing location of Bitton & Oldland Common and surrounding wards



To produce ward data, ONS use best-fit estimates based on combining the data from Output Areas. Best-fitting is the method used to produce estimates for any output geography using Output Areas (OA) as building blocks. These are the lowest level of geographical area for census statistics comprising a usually resident population between 100 and 625 persons and 40 to 250 households.

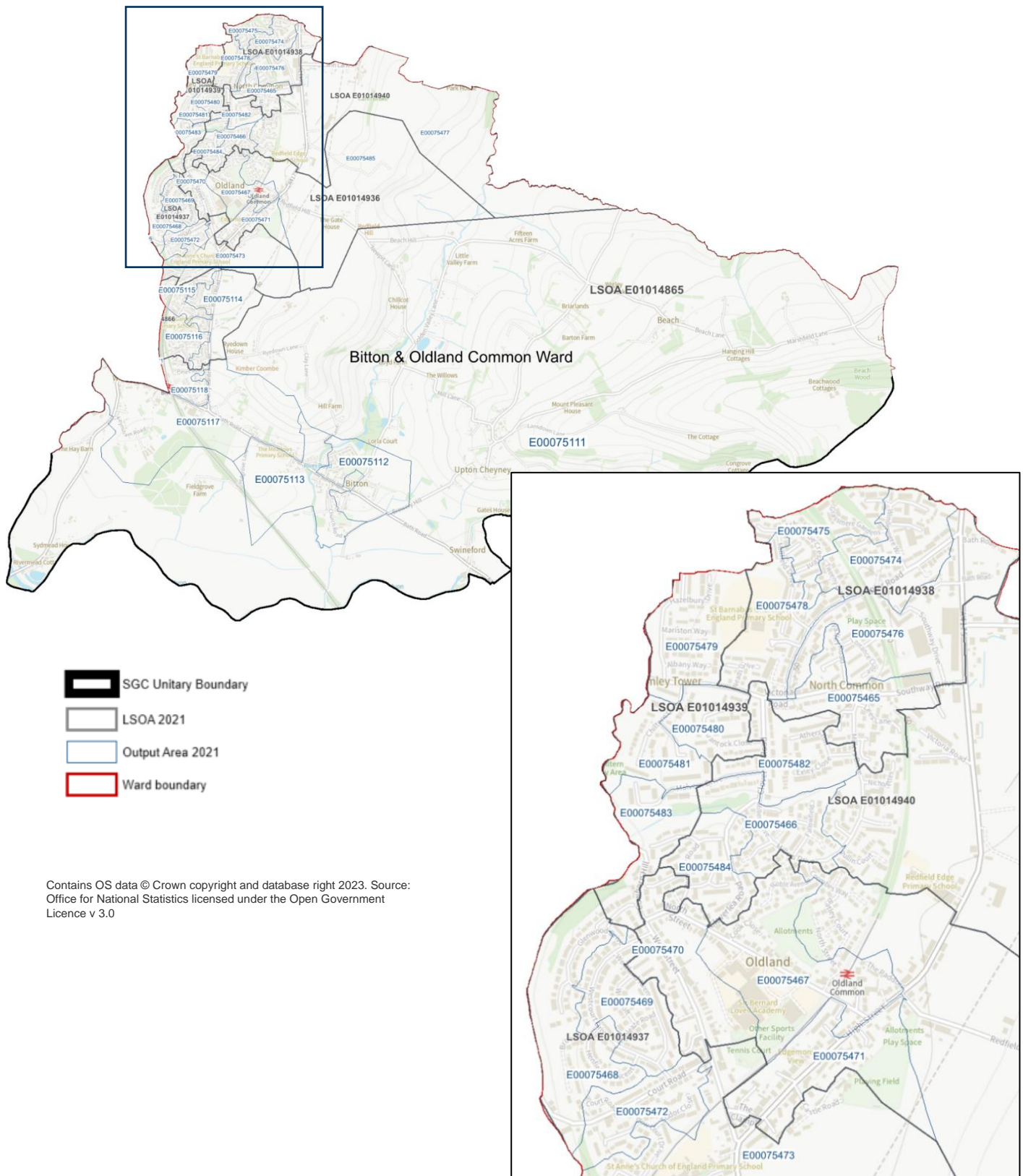
Ward data is determined by the aggregation of data for each Output Area (the smallest geography) using the best-fit methodology. Each OA has a [population weighted centroid](#) which is a single summary point that reflects the spatial distribution of the Census 2021 population. The OA is allocated to the ward in which the population weighted centroid is located. The list of Output Areas below, are the ones used to calculate the ward data. Due to statistical disclosure control, aggregating the totals below may result in a small difference in ward totals that may be published elsewhere.

Where we want to understand a smaller or bespoke population area, OAs and Lower layer Super Output Areas (LSOAs) are used. LSOAs are made up of groups of OAs, usually four or five and comprise between 400 and 1,200 households. They usually have a resident population between 1,000 and 3,000 persons. LSOAs are not related to ward boundaries, but as OAs are the building blocks for these larger geographies, it is useful to know their location and individual populations as they are used in other data sets (e.g. Indices of Deprivation).

The map below shows the Output Areas that are within the ward boundary and have been used for calculating the ward tables. The individual population and household data is also included for each OA along with the LSOA in which it sits.

Output Areas and LSOAs in Bitton & Oldland Common

This map shows Output Areas (OA21) within the ward. Larger LSOA boundaries, which are built from Output Areas, are also shown. LSOAs on the edge of the ward will sit across the boundary.



Contains OS data © Crown copyright and database right 2023. Source: Office for National Statistics licensed under the Open Government Licence v 3.0

The table below shows individual Output Areas, the LSOA they are part of and their resident and household numbers.

OA21 Population and households in Bitton & Oldland Common Ward

Output Area (OA21)	Lower layer Super Output Area in which OA21 is located (LSOA21)	OA21 Population: All usual residents	Lives in a household	Lives in a communal establishment
E00075111	E01014865	454	453	1
E00075112	E01014865	524	524	0
E00075113	E01014865	284	284	0
E00075114	E01014866	280	280	0
E00075115	E01014866	233	233	0
E00075116	E01014866	331	331	0
E00075117	E01014865	263	263	0
E00075118	E01014865	243	243	0
E00075465	E01014938	283	283	0
E00075466	E01014940	318	318	0
E00075467	E01014936	371	371	0
E00075468	E01014937	323	323	0
E00075469	E01014937	364	364	0
E00075470	E01014936	316	303	13
E00075471	E01014936	403	384	19
E00075472	E01014937	315	315	0
E00075473	E01014937	323	323	0
E00075474	E01014938	318	318	0
E00075475	E01014938	318	318	0
E00075476	E01014938	298	298	0
E00075477	E01014940	383	383	0
E00075478	E01014938	338	338	0
E00075479	E01014939	314	314	0
E00075480	E01014939	304	304	0
E00075481	E01014939	314	314	0
E00075482	E01014940	339	339	0
E00075483	E01014939	298	298	0
E00075484	E01014940	284	284	0
E00075485	E01014936	328	328	0

Source: ONS Census21, Table TS001

Index of tables

1. DEMOGRAPHY AND MIGRATION	2
T1. Sex	2
T2. Age	2
T3. Residence type	2
T4. Number of households	2
T5. Household composition	3
T6. Household deprivation	3
T7. Household size	4
T8. Living arrangements	4
T9. Legal partnership status	4
T10. Country of birth	5
T11. Length of residence in the UK	5
T12. Passports held	5
2. ETHNICITY, IDENTITY, LANGUAGE AND RELIGION	6
T13. Ethnicity	6
T14. National identity	6
T15. Religion	7
T16. Household language	7
3. HEALTH, DISABILITY AND UNPAID CARE	7
T17. General health	7
T18. Disability	8
T19. Provision of unpaid care by number of hours	8
4. LABOUR MARKET	8
T20. Employment history	8
T21. Economic activity	9
T22. Highest level of qualification	9
5. WORK AND TRAVEL	10
T23. Hours worked	10
T24. Occupation	10
T25. Industry	11
T26. Method used to travel to work	11
T27. National Statistic Social Economic Classification (NS-SeC)	12
6. HOUSING	12
T28. Accommodation type	12
T29. Tenure of household	13
T30. Number of bedrooms	13
T31. Number of rooms (VOA)	13
T32. Occupancy rating for bedrooms	14
T33. Central heating	14
T34. Car or van availability	15
7. ARMED FORCES	15
T35. Previously served in the armed forces	15
T36. Number of people in the household who have previously served in UK armed forces	15

Notes

Protecting personal data

Sometimes ONS make changes to data where it is possible to identify individuals. This is called statistical disclosure control (SDC). For Census 2021 this involved:

- Targeted record swapping. If a household was likely to be identified in datasets, this record would be swapped with a similar one from a nearby small area. A very unusual household could be swapped with one in a nearby local authority.
- Adding small changes to some counts (cell perturbation). This could change a count of four to a three or a five and make a small difference between tables depending how those data is broken down. This will also affect some table totals.

Individual table notes

¹ This is the sex recorded by the person completing the census. The options were "Female" and "Male". Note that in the census tables, a usual resident of the UK is anyone who, on 21 March 2021, is in the UK and has stayed, or intends to stay, in the UK for 12 months or more or has a permanent UK address and is outside the UK and intends to be outside the UK for less than 12 months. The only exception is members of the armed forces on deployment on operations, who remain usual residents of the UK regardless of length of deployment. This is the same definition as used in the mid-year population estimates and allows for comparability with population estimates from other countries.

² A person's age on Census Day, 21 March 2021 in England and Wales. Estimates for single year of age between ages 90 and 100+ are less reliable than other ages. Estimation and adjustment at these ages was based on the age range 90+ rather than five-year age bands.

³ People who completed the normal household questionnaire were recorded as living in a household. Those who completed an individual questionnaire were asked if they lived in a household or a communal establishment.

⁴ This is the total figure for number of households. Other tables may have a slight variation in figures, including the total, due to statistical disclosure control – see note above.

⁵ Figure is for households. Total may vary from total household table (TS041) due to statistical disclosure control. One-family households are classified by: i) the number of dependent children ii) family type (married, civil partnership or cohabiting couple family, or lone parent family). Other households are classified by: i) the number of people ii) the number of dependent children iii) whether the household consists only of students or only of people aged 66 and over. Data about household relationships might not always look consistent with legal partnership status. This is because of complexity of living arrangements and the way people interpreted these questions. Take care when using these two variables together.

⁶ Visitors staying at an address do not count to that household's size.

⁷ The living arrangements classification combines responses to the question on marital and civil partnership status with information about whether or not a person is living in a couple. This topic is only applicable to people in households. Living arrangements differs from marital and civil partnership status because cohabiting takes priority over other categories. For example, if a person is divorced and cohabiting, then in results for living arrangements they are classified as cohabiting.

⁸ Classifies a person according to their legal marital or registered civil partnership status on Census Day 21 March 2021. It is the same as the 2011 census variable "Marital status" but has been updated for Census 2021 to reflect the revised Civil Partnership Act that came into force in 2019. In Census 2021 results, "single" refers only to someone who has never been married or in a registered civil partnership.

⁹ The country in which a person was born. For people not born in one of the four parts of the UK, there was an option to select "elsewhere". People who selected "elsewhere" were asked to write in the current name for their country of birth.

¹⁰ The length of residence in the UK is derived from the date that a person most recently arrived to live in the UK. It does not include returning from a holiday or short stay outside the UK. Length of residence is only applicable to usual residents who were not born in the UK. It does not include usual residents born in the UK who have emigrated and since returned - these are recorded in the category "born in the UK".

¹¹ All passports classifies a person according to the passport or passports they held at the time of the census. This included expired passports or travel documents people were entitled to renew. Where a person recorded having more than one passport, they were counted only once, categorised in the following priority order: 1. UK passport, 2. Irish passport, 3. Other passport. Only the first country written in "Other passport" was taken.

¹² The ethnic group that the person completing the census feels they belong to. This could be based on their culture, family background, identity or physical appearance. The question about the ethnic group people feel they belong to is self-identified and is subjectively meaningful to the person answering the question. This means that how a person chooses to identify can change over time. Respondents could choose one out of 19 tick-box response categories, including write-in response options. A new Roma category next to the Gypsy or Irish Traveller tick box within the White category was added for Census 2021. A write-in option for those selecting African within the Black, Caribbean or Black British category was also added so a more specific ethnic background could be recorded.

¹³ Someone's national identity is a self-determined assessment of their own identity, it could be the country or countries where they feel they belong or think of as home. It is not dependent on ethnic group or citizenship. Respondents could select more than one national identity.

¹⁴ The religion people connect or identify with (their religious affiliation), whether or not they practice or have belief in it. This question was voluntary and includes people who identified with one of 8 tick-box response options, including 'No religion', alongside those who chose not to answer this question.

¹⁵ Classifies households by the combination of adults and children (aged 3 to 15 years) within a household that have English (English or Welsh in Wales) as their main language..

¹⁶ A person's assessment of the general state of their health from very good to very bad. This assessment is not based on a person's health over any specified period of time.

¹⁷ People who assessed their day-to-day activities as limited by long-term physical or mental health conditions or illnesses are considered disabled. This definition of a disabled person meets the harmonised standard for measuring disability and is in line with the Equality Act (2010).

-
- ¹⁸ An unpaid carer may look after, give help or support to anyone who has long-term physical or mental ill-health conditions, illness or problems related to old age. This does not include any activities as part of paid employment. This help can be within or outside of the carer's household.
- ¹⁹ Census 2021 took place during the coronavirus (COVID-19) pandemic. The national lockdown, associated guidance and furlough measures will have affected the labour market topic. Care should be taken when using this data for planning and policy purposes.
- ²⁰ People aged 16 years and over are economically active if, between 15 March and 21 March 2021, they were: i) in employment (an employee or self-employed) ii) unemployed, but looking for work and could start within two weeks iii) unemployed, but waiting to start a job that had been offered and accepted. It is a measure of whether or not a person was an active participant in the labour market during this period. Economically inactive are those aged 16 years and over who did not have a job between 15 March to 21 March 2021 and had not looked for work between 22 February to 21 March 2021 or could not start work within two weeks. The census definition differs from International Labour Organization definition used on the Labour Force Survey, so estimates are not directly comparable. An employee is a person aged 16 years and over in employment doing paid work for an individual or organisation. This relates to people's main jobs or, if not working at the time of the census, their last main jobs. Self-employed is defined as people aged 16 years and over who own and operate their own business, professional practice or similar enterprise, including those operated with a partner. This relates to people's main jobs or, if not working at the time of the census, their last main jobs. This can include people who work freelance, which means someone who is self-employed and works (or worked) for different companies on particular pieces of work. Self-employed people who are not freelance can have employees who work for them.
- ²¹ The number of hours worked per week before the census includes paid and unpaid overtime. This covers the main job of anyone aged 16 years and over.
- ²² Classifies what people aged 16 years and over do as their main job. Their job title or details of activities they do in their job and any supervisory or management responsibilities form this classification. This information is used to code responses to an occupation using the Standard Occupational Classification (SOC) 2020. It classifies people who were in employment between 15 March and 21 March 2021, by the SOC code that represents their current occupation.
- ²³ Classifies people aged 16 years and over who were in employment between 15 March and 21 March 2021 by the Standard Industrial Classification (SIC) code that represents their current industry or business. The SIC code is assigned based on the information provided about a firm or organisation's main activity.
- ²⁴ It is difficult to compare this variable with the 2011 Census because Census 2021 took place during a national lockdown. The government advice at the time was for people to work from home (if they can) and avoid public transport. People who were furloughed (about 5.6 million) were advised to answer the transport to work question based on their previous travel patterns before or during the pandemic. This means that the data does not accurately represent what they were doing on Census Day. This variable cannot be directly compared with the 2011 Census Travel to Work data as it does not include people who were travelling to work on that day. It may however, be partially compared with bespoke tables from 2011.
- ²⁵ The National Statistics Socio-economic Classification (NS-SEC) indicates a person's socio-economic position based on their occupation and other job characteristics. It is an Office for National Statistics standard classification. NS-SEC categories are assigned based on a person's occupation, whether employed, self-employed, or supervising other employees. Full-time students are recorded in the "full-time students" category regardless of whether they are economically active. This table is not comparable with the 2011 Census because the classifications in the occupation variable have changed.
- ²⁶ Owner-occupied accommodation can be: owned outright, which is where the household owns all of the accommodation with a mortgage or loan part-owned on a shared ownership scheme. Rented accommodation can be: private rented (for example, rented through a private landlord or letting agent social rented through a local council or housing association. This information is not available for household spaces with no usual residents.
- ²⁷ For Census 2021, "Renewable energy (for example solar thermal or heat)" and "District or communal heating network" were added as categories. Gas was also split into "Mains gas" and "Tank or bottled gas". The category "Wood (for example, logs, waste wood or pallets)" was separated from "Solid fuels".
- ²⁸ Vehicles included: pick-ups, camper vans and motor homes; vehicles that are temporarily not working; vehicles that have failed their MOT; vehicles owned or used by a lodger; company cars or vans if they're available for private use. Vehicles not included: motorbikes, trikes, quad bikes or mobility scooters; vehicles that have a Statutory Off Road Notification (SORN); vehicles owned or used only by a visitor; vehicles that are kept at another address or not easily accessed. The number of cars or vans in an area relates only to households. Cars or vans used by communal establishment residents are not counted. Households with 10 to 20 cars or vans are counted as having only 10. Households with more than 20 cars or vans were treated as invalid and a value imputed.
- ²⁹ This was a new question for Census 21 so there is no comparability with previous censuses. Identifies people who have previously served in the UK armed forces. This includes those who have served for at least one day in armed forces, either regular or reserves, or Merchant Mariners who have seen duty on legally defined military operations.

For further information please contact the Insight and Engagement Team at research@southglos.gov.uk