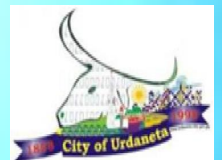


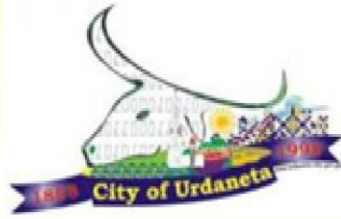


CITY OF URDANETA SOCIO-ECONOMIC PROFILE 2016

CITY GOVERNMENT



OF URDANETA



Republic of the Philippines
CITY GOVERNMENT OF URDANETA
Province of Pangasinan

CITY OF URDANETA SOCIO-ECONOMIC PROFILE CY 2016

Old City Hall

Alexander Street, Poblacion
Urdaneta City, 2428
Pangasinan, Philippines
Phone: (075) 633-7080

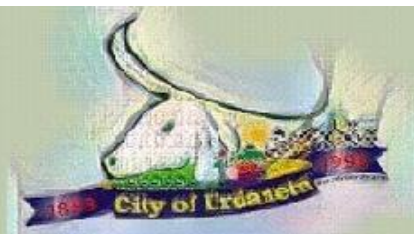
New City Hall

Mac Arthur Highway, Anonas
Urdaneta City, 2428
Pangasinan, Philippines

Email: info@urdaneta-city.gov.ph

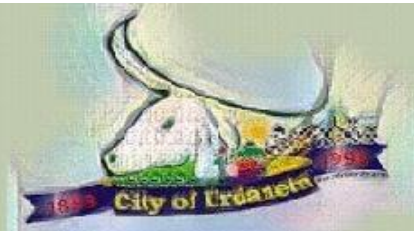
Website: <http://www.urdaneta-city.gov.ph>

TABLE OF CONTENTS



Vision-Mission Statement	1
Executive Agenda	2
Executive-Legislative Business for Progress	3
Historical Background	4
Local Chief Executives	5
Elected City Officials	7
Facts And Figures	8
I. GENERAL	8
A. Creation	8
B. Type of LGU	8
C. Urbanization Level	8
D. Geography	8
E. Land Area	9
F. Topography	11
G. Climate	11
H. Languages/Dialects	11
I. Religion	11
II. HUMAN RESOURCES	11
III. FINANCIAL RESOURCES	12
IV. INFRASTRUCTURE AND SOCIO-ECONOMIC SECTOR	13
A. Agriculture	13
B. Commerce/Trade	14
C. Infrastructure & Utilities	15
D. Social Services	17
E. Protective Services:	25
F. Environmental/Ecology	28

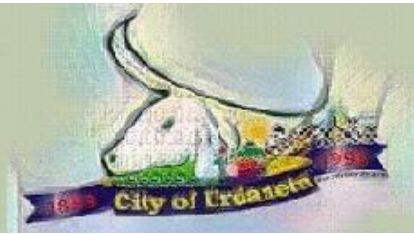
TABLE OF CONTENTS



V. OTHER DATA/ TABLES/ MAPS

A. Demography	30
B. Infrastructure Sector	34
C. Economic Sector	43
D. Social Sector	54
E. Maps	63
F. 2016 Proposed Projects	68
G. Barangay Captains	70
H. Department Heads and Chiefs Of Offices	71
I. Directory of Government Offices	72
J. Directory of Non-Government Offices	74

VISION-MISSION STATEMENT



VISION

URDANETA CITY is envisioned to be a center of agri-industrial development and educational advancement, a city with viable solid waste management, admirable traffic system, sustainable social services and equitable opportunity, and a community of God-loving, well-disciplined, self-reliant, and development-oriented people. It shall be an urban growth center and a model of good governance in Northern Luzon.

MISSION

URDANETA CITY is committed to provide adequate infrastructure facilities and basic social services to promote a healthy and safe environment, to practice good governance and dynamic leadership in ensuring political stability and economic self-sufficiency, and to promote people participation and policy formulation and project implementation.

EXECUTIVE AGENDA



Maximize the effective and efficient utilization of government resources through innovative planning, progressive programming, and prudent spending.



Bring government services closer to the people by conducting mobile services and tapping alternative areas for revenue collections.



Position Urdaneta City as a convention site and as an education center to open new opportunities for investments.



Maintain strong partnerships and linkages with the private sector and the civil society to promote wider participation in policy formulation and program implementation.



Boost productivity in all communities and in all areas of governance by supporting infrastructural development and human resources improvement.



Prioritize revenue-generation reforms and fiscal management innovations to increase collection efficiency, promote transparency and jumpstart the economy.

EXECUTIVE-LEGISLATIVE BUSINESS FOR PROGRESS



- U nited action and common vision for a better Urdaneta
- R evitalized communities as engines of progress
- D eveloped infrastructures to attract investments and spur growth
- A ggressive campaign to promote Urdaneta as a convention site and an education center
- N eed for efficient and effective government operations and services
- E ducation for all and at all levels
- T raffic management and transport system improvement
- A griculture development and modernization

- C hampioning sustainable development and environment protection
- I nnovative programs in health care
- T opmost priority for peace and order
- Y outh empowerment to ensure Urdaneta's future

HISTORICAL BACKGROUND



Urdaneta was organized into a pueblo on January 8, 1858 when the contiguous settlement of the pioneering inhabitants, mostly Ilocanos and a sprinkling of Pangasinenses, met all requirements of becoming a town. It came into existence from the conglomeration of portions of barrios from the surrounding towns of Asingan, Villasis, Malasiqui, Sta. Barbara, Mangaldan, Manaoag and Binalonan.

The petitioners for the creation of the new independent town identified themselves as Cabezas Tenietes representing the inhabitants of barrios Batad in Asingan, Nancamaliran in Sta. Barbara and Caocalan in Mangaldan. They proposed that the new town be named Soldevilla, in honor of the alcalde Mayor of the province at that time, Senior Don Manuel Boutelon y Soldevilla. However, the Alcalde Mayor himself declined the honor and instead proposed the name Urdaneta, with the recommendation of the Parish Priest, Fr. Nicolas Manrique Alonzo as the first cura parocco. The town was named in honor of Father Andres de Urdaneta. Father Andres de Urdaneta was a famous soldier, navigator, historian, cosmographer and evangelist who was assigned by King Philip II of Spain to join the Legaspi Expedition of 1564. A monument outside Intramuros shows Legazpi carrying a sword while Urdaneta at his side holding up the cross. There, an inscription reads: "he is the unparalleled cosmographer, pioneer of the Christian and Spanish civilization in the Philippines".

The Vicar of Sta. Barbara and the curates of Asingan and Mangaldan supported Father Alonzo's proposal to name the new town Urdaneta. The petition took almost two years to be processed. But soon after that, the Governor-General issued a decree and the new town of Urdaneta was finally born on the 8th of January 1858. Two months later, the town of Urdaneta was finally inaugurated which dated March 8, 1858. An assembly of Principales represented by the seven towns composed of Asingan, Sta. Barbara, Mangaldan, San Jacinto, Manaoag, Binalonan, and Villasis gathered in Urdaneta. The documents on the proclamation of the new town was executed and signed by all the participating officials. Concurrent with the inauguration was the construction of Urdaneta's first concrete church, forerunner of today's Catholic Cathedral and present site of Eastern Pangasinan's Bishopric.





CAPITANES

Don Tomas Manzano (1857)	Don Esteban Siquig (1875)
Don Florentino Benito (1858)	Don Francisco delos Santos (1876)
Don Vicente Benito (1859)	Don Pedro Elegado (1877 – 1878)
Don Rufino Velasco (1859)	Don Nicolas Estrada (1879 – 1880)
Don Pedro Vera (1861)	Don Domingo Castillo (1881 – 1882)
Don Patricio Agustin (1862)	Don Fermin Garcia (1883 – 1886)
Don Feliciano delos Santos (1863–1864)	Don Pedro Sison (1887 – 1888)
Don Pedro Vera (1865 – 1866)	Don Federico Laliag (1889 – 1890)
Don Cristino Manzano (1867 – 1868)	Don Benito Belmonte (1891 – 1892)
Don Simeon Arcangel (1869 – 1870)	Don Ignacio Fangon (1893 – 1898)
Don Zacarias Alonzo (1873 – 1874)	

MUNICIPAL PRESIDENTS

Don Benito Belmonte (1899)	Don Herminigildo Alonzo (1913–1916)
Don Antonio Guevarra (1900)	Don Casimiro Castillo (1917 – 1918)
Don Santiago Guevarra (1901 – 1907)	Don Ciriaco Sison (1919 – 1922)
Don Primitivo Perez (1908 – 1909)	Don Partenio Rosario (1922 – 1925)
Don Antonio Del Prado (1910 – 1911)	Don Ciriaco Sison (1925 – 1928)
Don Primitivo Perez (1911)	Don Mariano Israel (1928 – 1931)
Don Andres Marquez (1912)	Atty. Wilfredo Ambrosio (1931 – 1936)



MUNICIPAL MAYORS

Don Patricio Abenojar (1937 – 1941)
Don Hermogenes Israel (1942 – 1944)
Atty. Mariano S. Moreno (1944)
Don Manuel del Prado (1945)
Don Andres F. Adia (1946)
Don Patricio Abenojar (1946 – 1947)
Don Manuel S. Sison (1948 – 1959)
Atty. Leon S. Zabala (1959 – 1963)

Atty. Fernando C. Manangan, Sr. (1963-1966)
Don Amadeo R. Perez, Jr. (1966 – 1968)
Atty. Amando M. Fontanilla (1969-1971)
Don Manuel N. Sison (1972 – 1980)
Don Amadeo R. Perez, Jr. (1980 – 1986)
Don Norberto del Prado (OIC) (1986-1987)
Don Amadeo R. Perez, Jr. (1988 – 1992)
Don Rodolfo E. Parayno, M.D. (1992-1998)

CITY MAYORS

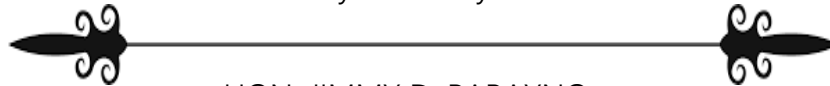
Hon. Rodolfo E. Parayno, M.D. (1998 – 2001)
Hon. Amadeo R. Perez, Jr. (2001 – 2010)
Hon. Amadeo Gregorio E. Perez IV (2010 – present)

ELECTED CITY OFFICIALS (2016-2019)



HON. AMADEO GREGORIO E. PEREZ IV
City Mayor

HON. JULIO F. PARAYNO III
City Vice-Mayor



HON. JIMMY D. PARAYNO
City Councilor

HON. MARIA TERESA SOCORRO P. NAGUIAT
City Councilor

HON. ERODUTOS F. SUMERA
City Councilor

HON. MAURA JENNIFER G. GARCIA
City Councilor

HON. PETER JASON I. AGASLUD
City Councilor

HON. ANTONINO P. PEREZ
City Councilor

HON. BLESILDO F. SUMERA
City Councilor

HON. JESUS LI. BASCO
City Councilor

HON. FLORENCIO B. ADUCA
City Councilor

HON. DOMINADOR M. VILLANUEVA III
City Councilor

HON. MICHAEL BRIAN M. PEREZ
City Councilor

FACTS AND FIGURES



GENERAL

A. Creation

- Municipality: January 08, 1858
- City: March 21, 1998 by Republic Act 8480



B. Type of LGU

- DILG Classification: 2nd Class Component City



C. Urbanization Level

The City of Urdaneta has an urbanization level of 68.61% and has been identified by the Provincial Government of Pangasinan as a growth pole. Agriculture is still the major source of income and livelihood of the people, though Urdaneta is considered as business and trading center in Pangasinan. It is a home to the largest fruits and vegetable wholesale market in Northern Luzon and one of the biggest livestock markets in the country.



Urbanization level gauges the growth of population living in the urban areas. The urban barangays are considered to be the center of economic activities. Out of the 34 barangays in Urdaneta City, fifteen (15) barangays are considered as urban barangays.

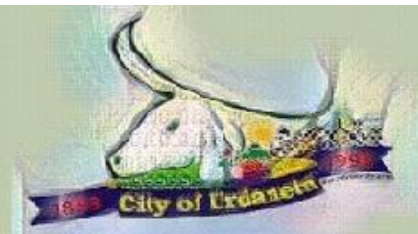


D. Geography

Urdaneta is a landlocked city strategically located at the eastern part of the Province of Pangasinan. It is situated on 15° 56' to 16° 0' latitude and 120° 29' to 120° 37' longitude. The city is bisected on the east and west sides by the Manila North Road and traversed by the McArthur Highway on the north and south parts.



FACTS AND FIGURES (continuation)

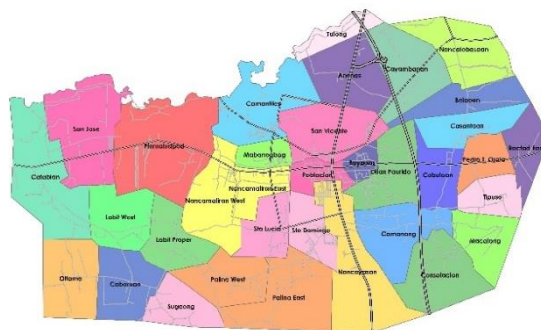


The City of Urdaneta is about 186 kilometres from Metro Manila and approximately 70 kilometres from Baguio City. It is 100 kilometres from San Fernando City, La Union, 28 kilometres from Dagupan City, Pangasinan, and 40 kilometres from the Capital Town of Lingayen, Pangasinan.

The city is bounded on the north by the municipalities of Manaoag, Laoac and Binalonan, and the Musing River; on the northwest by the municipality of Mapandan; on the south by the municipality of Villasis; on the southwest by the municipality of Malasiqui; on the east by the municipality of Asingan; and on the west by the municipality of Sta. Barbara.



E. Land Area



According to records of the Land Management Bureau of the Department of Environment and Natural Resources (DENR), the total land area of Urdaneta City is 10,026 hectares. However, the total land area approved by the Housing and Land Use Regulatory Board is approximately 12,098 hectares. The land area of the city comprises the 2.25 percent of the total land area of Pangasinan and a 0.94 percent of the total land area of Region I.

Land Area (has)		% Share of Barangays
Urdaneta	12,098	—
Urban Barangays	5,749.41	47.52
Rural Barangays	6,348.41	52.48

Land Area (has)		% Share of Urdaneta
Urdaneta	12,098	—
Pangasinan	536,818	2.25
Region I	1,284,019	0.94

There are 34 barangays in Urdaneta. The largest barangay is Cabaruan with 955.4 hectares which is 7.9 percent of the total land area of Urdaneta. The smallest barangay in terms of land area is barangay Tulong with 126.4 hectares, a percentage of 1.04 of the total land area.

FACTS AND FIGURES (continuation)



Urban Barangay	Land Area	Rural Barangay	Land Area
Anonas	455.7	Bactad East	170.73
Bayaoas	138.83	Bolaoen	388.25
Camanang	484.4	Cabaruan	955.4
Camantiles	463.07	Cabuloan	223.73
Catablan	773.4	Casantaan	439.23
Dilan-Paurido	216.23	Cayambanan	495.72
Mabanogbog	129.07	Consolacion	441.9
Nancamaliran East	142.07	Labit Proper	363.9
Nancamaliran West	315.9	Labit West	350.57
Nancayasan	604.18	Macalong	320.9
Palina East	236.33	Nancalobasaan	564.57
Pinmaludpod	821	Oltama	436.57
Poblacion	132.23	Palina West	306.9
San Jose	396.73	P.T. Orata	146.07
San Vicente	440.27	Sta. Lucia	141.7
		Sto. Domingo	185.57
		Sugcong	157.59
		Tiposu	132.9
		Tulong	126.39

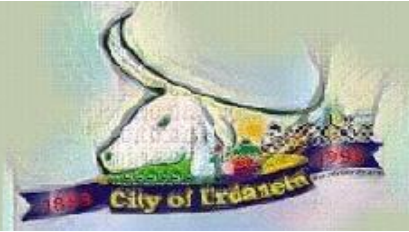
Urban Barangays. The 15 Urban barangays with an aggregate population of 89,811 are composed of Anonas, Bayaoas, Camanang, Camantiles, Catablan, Dilan-Paurido, Mabanogbog, Nancamaliran East, Nancamaliran West, Nancayasan, Palina East, Pinmaludpod, Poblacion, San Jose, and San Vicente. San Vicente is the most populous urban barangay with 10,572. barangay Poblacion ranked second with 7,665 followed by barangay Pinmaludpod with 7213.



Rural Barangays. The 19 Rural barangays with a total population of 43,129, include Bactad East, Bolaen, Cabaruan, Cabuloan, Casantaan, Cayambanan, Consolacion, Labit Poper, Labit West, Macalong, Nancalobasaan, Oltama, Palina West, Pedro T. Orata, Sta. Lucia, Sto Domingo, Sugcong, Tiposu and Tulong. The top three most populous rural barangays are Cayambanan with 4,008, next in rank is Labit Proper with 3,417 and lastly Sto. Domingo with 3,241.

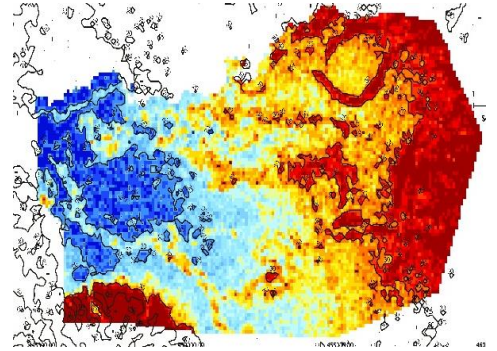


FACTS AND FIGURES (continuation)



F. Topography

Flat Terrain. The city forms part of the Central Plains of Luzon consisting of generally flat landforms. Majority of the barangays have nearly flat terrain. The city has a general slope range of zero to three percent. However, the terrain at its southwestern portions, specifically in barangays Oltama, Cabaruan, and Sugcong, is terraced with a slope range of three to eight percent.



G. Climate

Wet and Dry Season. Urdaneta has two major seasons, the wet and the dry season. The City experiences the dry season from November to April. The wet season, in turn, is experienced from May to October with an average rainfall of 86 mm. The heavy rainfalls usually occur between July and September.



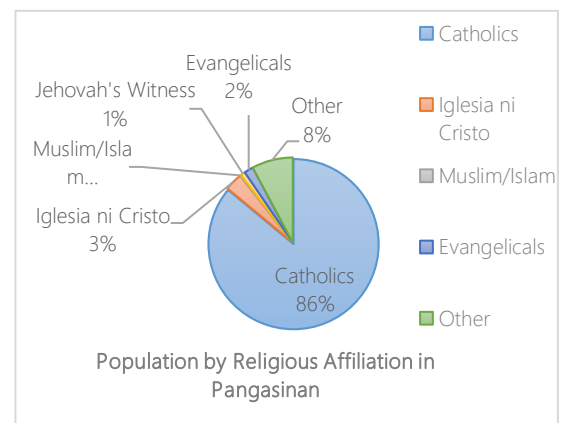
HH Pop'n by Mother Tongue/Ethnicity:2000		
Mother Tongue	Population	% of Total
Bikolano	369	0.33
Cebuano	92	0.08
Ilocano	97,037	87.15
Kankanaey	473	0.42
Kapampangan	416	0.37
Manobo	540	0.48
Pangasinense	4,351	3.91
Tagalog	6,485	5.82
Not Reported	335	0.30
Others	1,253	1.13
Total	111,351	100.00

H. Languages/Dialects

The widely used languages and dialects are Ilocano, Pangasinense, and Tagalog. About 87.15% of the population speaks Ilocano.

I. Religion

People of Urdaneta City are religiously affiliated to Roman Catholic, Iglesia Ni Cristo, Islam, Protestants, Aglipay and Evangelicals.



FACTS AND FIGURES (continuation)



HUMAN RESOURCES

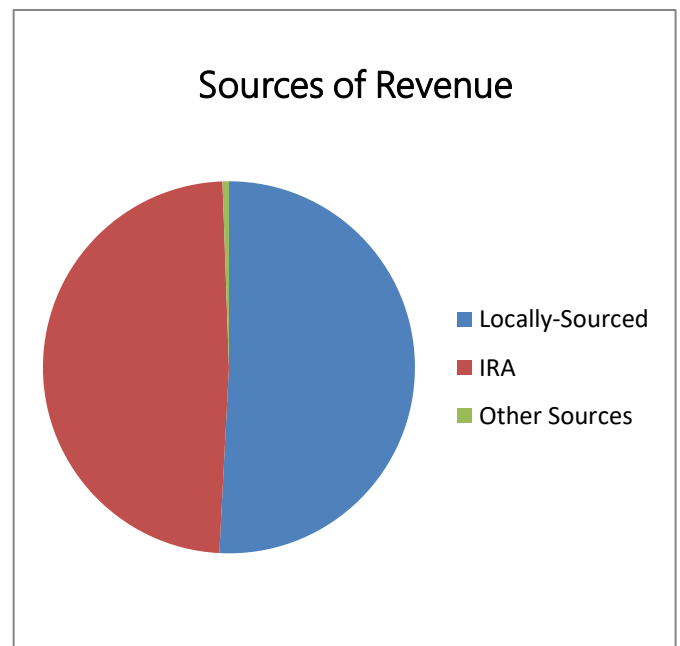
The total population of Urdaneta City in 2016 as projected is 134,495 with a growth rate of 1.17%. With its total land area (12,098 hectares), the population density is 11 persons per hectares. Moreover, the number of households in 2016 is 30,568 with an average size of 4 persons per household.

Total Population	
2015 (NSO)	132,940
2016 (projected)	134,495
Population Growth Rate	1.17%
Population Density	11 persons / ha.
No. of Households	
2015 (NSO)	30,214 (NSO 2015)
2016 (projected)	30,568 (projected)
Average Households Size	4 persons / household

FINANCIAL RESOURCES

Income. The total income for 2016 is Php 789,143,205.83. Revenue sources are comprised of Locally-Source Revenue, Internal Revenue Allotment (IRA); and Other Sources.

Expenditure. In 2016, the City of Urdaneta's expenditures has an aggregate of Php 588,457,735.88. Expenditures are partitioned into Personal Services, Maintenance and Other Operating Expenses (MOOE), and Capital Outlay. Majority of the city's expenses are derived from the Personal Services and MOOE.



Financial Institutions

There are 34 banks and 24 insurance agencies recorded in 2016.

No. of Banks	34
No. of Insurance	24
No. of Lending Companies	36
No. of Pawnshop	34
No. of Financial Ins./Money Changer	34



INFRASTRUCTURE AND SOCIO-ECONOMIC SECTOR

A. Agriculture

Agricultural Production. Of the city's total land area of 12, 098 hectares, 4,624 ha (38.22% of the total land area) are irrigated and devoted to rice production. For the irrigated areas, rice are planted twice or thrice a year. In 2016, a total rice production volume of 36,992 metric tons (mt) is recorded and valued at Php 554,862,000.00.



Total number of farmers is reported to be 4,656 (20.10%) of whom are tenants. These farmers employ the modern techniques of farming consist of using packages of technologies on proper seed selection, nutrient management, water management, pests and disease management, and postharvest technologies.

Activities	Year 2016	
	Area (ha)	%
Crop Production	4,624	98.84
Livestock/Poultry	15	0.32
Fishing	38.73	0.82
TOTAL	4,678	100

Livestock and Poultry. Cabuloan, San Jose and Tipuso are the only barangays that produces poultry for commercial use. Livestock productions are generally backyard production.



Fisheries. Existing fishing grounds yielded 141.5 metric tons of fish catch which are valued at Php9,197,500. Tilapia nilotica is the popularly cultured species. Carps are raised on a smaller scale.

Fishing Grounds	Barangay	Production		Product Market
		Volume (mt)	Value (Php)	
Inland	citywide	141.5	9,197,500	local

FACTS AND FIGURES (continuation)



B. Commerce and Trade

Commercial activities are predominantly located at barangay Poblacion being the central business district. Adjacent barangays of Nancayasan and San Vicente are growing centers for commercial establishments.

Urdaneta City has five Public Markets which are Urdaneta Public Market, Urdaneta Wholesale Market, Urdaneta Cattle Market, Xentromart Bagsakan and Pangasinan Agri-Pinoy Trading Center. The Pangasinan Agri-Pinoy Trading Center (PAPTC) was built and funded by the Department of Agriculture. It was constructed in 2013 and started its operation in Oct. 24, 2014. The PAPTC is a wholesale market where only farm products, various fruits and vegetables, condiments and spices from neighboring towns and provinces are traded.

The Major Shopping Centers are Magic Mall, Super Magic, CSI Warehouse, CB Mall, 168 Mall / RCS Supermarket.

Type of Commercial Areas	Location	Area (sq m)
New Public Market	Poblacion	12,438.40
Bagsakan Market	Poblacion	15,736.50
Pangasinan Agri-Pinoy Trading Center (PAPTC)	Poblacion	4,281.71
168 Mall	Poblacion	24,876.80
MAGIC MALL	Poblacion	10,262.00
CB MALL	Nancayasan	-
CSI MALL	Nancayasan	-
SUPER MAGIC	Poblacion	1,327.00
ADDESA	Poblacion	6,400.00



Type/Classification/Kind of Business and Trade	No. of Employees	Gross Sale
Wholesale Trade and Retail	1,292	749,784,121.68
Banking and Finances	320	506,652,789.38
Real Estate/ Construction	304	501,792,238.87
Services	5,177	2,618,007,487.36
TOTAL	7,093.00	4,376,236,637.29

Business and trade are classified as Wholesale Trade and Retail, Banking and Finances, Real Estate/ Construction and Services. The Services sector yields the highest number of employees.

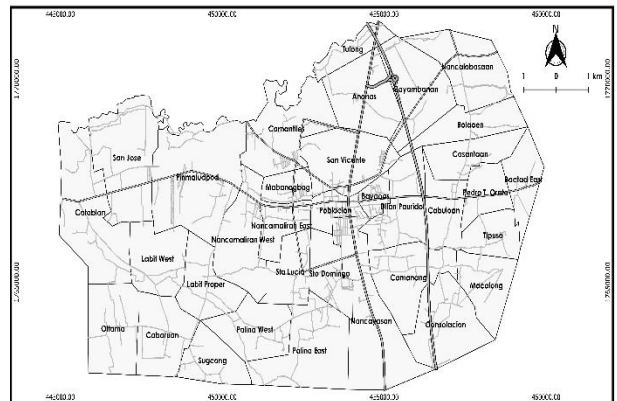
FACTS AND FIGURES (continuation)



Economic Activities	No. of Establishments	No. of Employment
Wholesale and Retail Trade	648	1292
Hotel and Restaurants, Transport & Storage	71	3900
Communication	3	6
Financial Intermediation	115	320
Real Estate	22	66
Renting and Business Activities	408	1224
Public Administration and Defense	2	4
Education	19	401
Health and Social Work	99	312
Other Community, Social and Personal Service Activities	140	480
Private Household with Employed persons	4100	5218
TOTAL	5,627	13,223

C. Infrastructure & Utilities

Road Network. The Manila North Road and the Urdaneta-Dagupan Road are the major arterial roads of Urdaneta City. These two major roads interconnect Urdaneta to the Northern and Southern parts of Luzon. It has paved to the unprecedented urban growth of the city. A total of 259,531 meters comprised the road network in Urdaneta City. Urdaneta's internal road network follows a radial pattern interconnecting all barangays to the central business district in Poblacion. The road network provides access to neighbouring municipalities of Manaoag, Mapandan, Laoac, Binalonan, Asingan, Villasis, and Malasiqui.



Information and Communication Technology (ICT). The Philippine Postal Corp. provides postal services, receipt and delivery of incoming mails, dispatch of outgoing mails, sales and issuance of postal money orders, sales of stamps and issuance of postal identification cards. It offers both domestic and international mails and parcel deliveries.

Type of Print Media	Location	Circulation
		Frequency
Northern Express	Del Prado Compound, Poblacion	Weekly
Pangasinan Express	Del Prado Compound, Poblacion	Weekly
Ilocano Observer		Weekly

FACTS AND FIGURES (continuation)



There are 34 cellular sites in the city owned by Globe Telecommunication, Smart Communication, Digitel Phils., and GSM Cellsite. There is also a local radio network that operates in Poblacion and three print media that circulate in a weekly basis.



Water Facilities and Services. Most residents of the city utilize upgraded artesian wells to pump groundwater. Sanitary inspectors of respective city health office conduct chlorination in flood prone areas to ensure the safety of the residents. Other major sources of water supply are tributaries of rivers and creeks (Agno, Tulong, Tagamusing, Macalong and Mitura Rivers).



The Urdaneta City Water District (UCWD) is the main service provider of water to the community. A total of 8,796 households is being serviced by UCWD as of December 2016 in 28 barangays. The six barangays unserved by the UCWD are Cabaruan, Consolacion, Macalong, Oltama, Sugcong and Tipuso. There are 7 pumping stations that serve as water supply source to the water district. These stations are UCWD Office Nancayasan; AGL Nancayasan; Pangasinan Ville, P.T. Orata; DoMAGAS St. Dilan Paurido; Anonas East; Greenville, Anonas; and Woodside, Pinmaludpod. The LWUA standard's average consumption of a residential type of consumer for a level III water supply system is 100-110 liters per capita per day (lcpd).



Urdaneta City			LWUA Standard
Residential	Urban	111-156 lcpd	100-110 lcpd
	Rural	100-134 lcpd	
Commercial	0.2-2.7 cumd/connection		1.0- 2.0 cumd/connection
Institutional/Government	0.1-5.0 cumd/connection		3.0 cumd/connection

FACTS AND FIGURES (continuation)



Power Utilities. The Pangasinan III Electric Cooperative is the main service provider of electricity in Urdaneta. The 34 barangays of the city is serviced by PANELCO III. PANELCO III provides a 24-hour power service to its concessionaires. There are 31,243 households served by PANELCO III in the city.

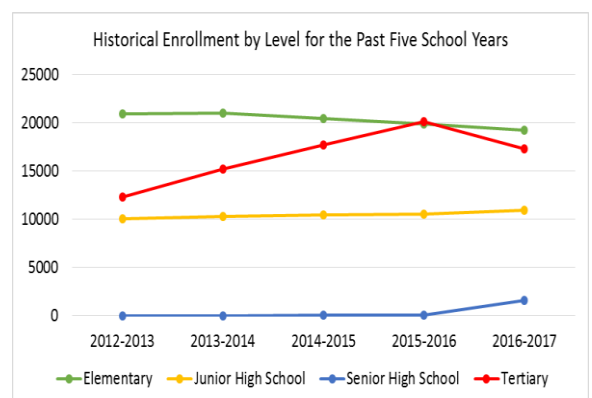


D. Social Services

Education. The City Schools Division of Urdaneta has 1,371 teaching and non-teaching personnel headed by Schools Division Superintendent Gloria Rusiana-Torres and Officer-in-Charge Rosario O. Cabrera. It is categorized as a medium division with a total of 63 operating public schools.

From the year 2015 to 2016, enrollment in different levels fluctuate. Elementary and tertiary level decrease. While there is a decrease of enrollment in tertiary, the number of enrollees increase in junior and senior high school. This is due to DEPED's K-12 Program.

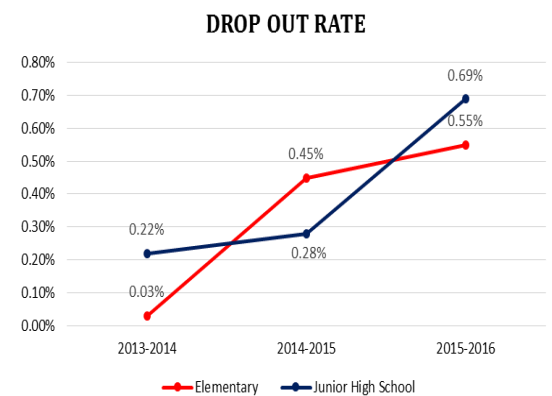
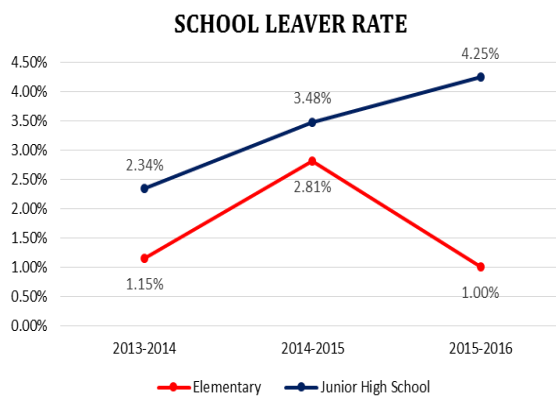
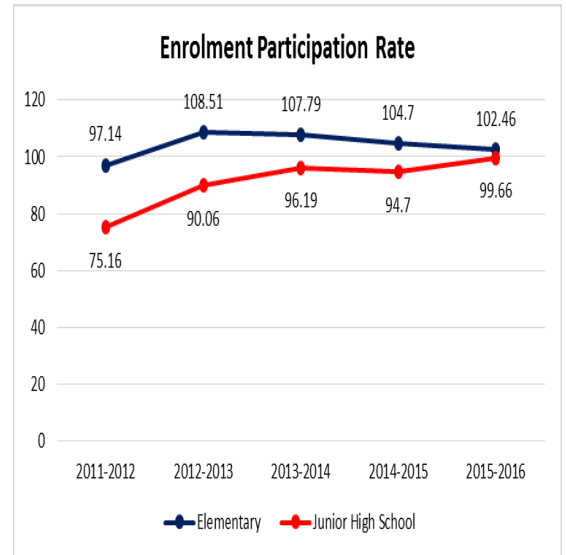
Total No. of Schools	Level	Grade Level
41	Elementary School	Kindergarten Grades 1 to 6
1	Integrated Elementary and Junior High School	Kindergarten Grades 1 to 10
9	Junior High School	Grades 7 to 10
9	Integrated Junior and Senior High School	Grades 7 to 12
3	Integrated Elementary, Junior High and Senior High School	Kindergarten Grades 1 to 12



FACTS AND FIGURES (continuation)



For elementary education and junior high school, data/graph for enrolment participation rate, school leaver rate and dropout rate are below. Despite the fact that the trend of Enrolment Participation Rate in Urdaneta City decreased in SY 2012-2013 for elementary level, the 102.46 participation rate in enrolment implies that all children of school age in the population of the city as well as those from the surrounding municipalities are enrolled in the elementary level. For Junior High School, EPR is fluctuating.



School leaver rate captures the number of drop outs and the number of learners who did not enroll the next school year. School leaver rate in elementary level is fluctuating and dropout rate is increasing. For the dropout rate, there is an increasing number of enrollees who did not finish elementary grades for the last three years. In Junior High School, school leaver and dropout rates are increasing.

FACTS AND FIGURES (continuation)

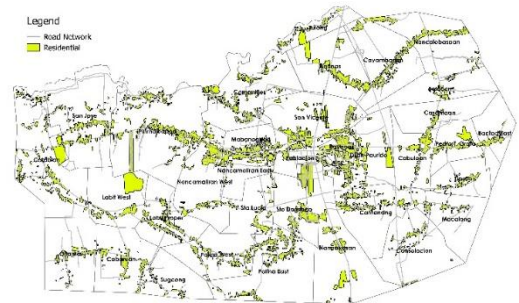


Housing. The estimated total residential land area is 1150 hectares as computed in Geographic Information System.

The ratio of household to occupied housing units is 0.23. Thus on the average, a housing unit is composed of one household with four persons. There is no available data for vacant housing units but there are 28 recorded subdivisions and socialized housing units to be occupied.

Doubled-up households are recorded to have 678 in number. There are 240 unacceptable housing units made of mixed materials. The unacceptable housing units are those units which walls and roof are made of mixed materials such as wood, cogon, nipa, anahaw, asbestos and others. There are also 66 housing units that are recorded as makeshift, salvage or improvised housing unit.

In terms of tenure status for the year 2016, about 23,886 housing units (72%) are owned and being amortized; 2,615 housing units are rented (8%); 6,425 housing units are being occupied for free with consent of owner; and about 174 housing units are being occupied for free without consent of owner.



	Year (2016)	
	No.	% Increase/Decrease
Households (HH)	32077	1.95
Household Population	133662	1.09
Housing Units (HU)	31405	2.03
Occupied HU	31405	2.03
Ratio of HH to Occupied HU	0.23	
Ratio of HH Population to Occupied HU	4.22	

Backlog	(Y2016)	
	No.	%
Doubled – Up Households	678	0.71
Unacceptable Housing Units	239.63	0.25
Makeshift / Salvage/ Improved HU	66	0.07
Others	-	-
Total Backlog	952.74	

Tenure Status	(Y2016)	
	Housing Unit	
	No.	%
Owned/Being Amortized	23,886	72%
Rented	2,615	8%
Being Occupied for Free With Consent of Owner	6,425	19%
Being Occupied for Free Without Consent of Owner	174	1%
Total	33,100	

FACTS AND FIGURES (continuation)



Health. Medical health services are served by different health facilities within the City. There are three hospitals on which two of these are privately operated – Divine Mercy Hospital and Sacred Heart Hospital. The government operated is the Urdaneta District Hospital.



Urdaneta City has three main Health Offices – City Health Office I, II and III. These main health offices are strategically located in different areas in Urdaneta City. Each City Health Office has different Barangay Health Stations under its Catchment Area. Every barangay in Urdaneta City has its own Barangay Health Station with either registered midwives or registered nurses acting as nurses together with other casual nurses as personnel.

CHO I POBLACION	CHO II CABULOAN	CHO III LABIT PROPER
Camantiles	Consolacion	Catablan
Mabanogbog	Anonas	Palina East
Nancamaliran East	Dilan-Paurido	Sugcong
Nancamaliran West	Bactad East	Catablan
Pinmaludpod	Casantaan	San Jose
San Vicente	Bayaoas	Labit West
Sta. Lucia	Cayambanan	Cabaruan
	Macalong	Palina West
	Nancalobasaan	Sto. Domingo
	Nancayasan	
	Tipuso	
	Tulong	
	Camanang	
	Pedro T. Orata	
	Bolaoen	

Given the health indicators on fertility and mortality, the crude birth rate of the city is 12%; crude death rate is 3%; infant mortality rate is 3.66%, and young child mortality rate is 0.82%.

In terms of nutrition among 18,160 children, there are 506 children who are underweight and 144 children are considered severely underweight. There are Programs, Projects and Activities that the City Nutrition Council has organized with an aim to improve the nutritional status of the city.

Health Indicator	Rate
Fertility	
Crude Birth Rates (CBR)	12
Mortality	
Crude Death Rate (CDR)	3
Infant Mortality Rate(IMR)	3.66
Young Child Mortality Rate(YCMR)	0.82
Maternal Mortality Rate (MMR)	0



FACTS AND FIGURES (continuation)

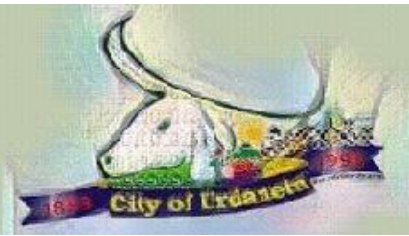


Causes of Morbidity	No. of Cases	Causes of Mortality	No. of Cases
Senile Debility	34	Acute Respiratory Infection	1802
Cerebro Vascular Accident	23	Hypertension	836
Pneumonia	27	Urinary Tract Infection	816
Bronchial Asthma	0	Acute Gastroenteritis	253
Diabetes Mellitus	9	Pneumonia	121
Congestive Heart Failure	0	Acute Tonsillopharyngitis	86
Multiple Organ Failure	6	Bronchial Asthma	169
Myocardial Infarction	4	Dermatitis	106
Hypertension	0	Influenza	104
Kidney Failure	12	Diabetic Mellitus	125
TOTAL	115	TOTAL	4418

Table shows the top ten leading causes of morbidity and mortality. Acute respiratory infection is the leading cause of morbidity. The high incidence of respiratory infection suggests that the City is prone to airborne diseases on which pollution is a contributory factor to this disease. Other infectious diseases that are listed in the top 10 may be due to poor hygiene, poor nutrition, low body resistance and sudden change in weather. It can be noted that half of the diseases are non-communicable, these are hypertension, urinary tract infection, bronchial asthma, diabetes mellitus and dermatitis which are usually atopic. These are lifestyle diseases and are highly preventable. With the leading causes of death, senile debility (a natural cause of death due to old age) is the topmost. The second cause is cerebro vascular accident which is a lifestyle related disease. Other principal causes of death are pneumonia and bronchial asthma which are diseases of the lungs caused by infection and pollution. Diabetes mellitus, congestive heart failure, multiple organ failure, myocardial infarction, hypertension and kidney failure are non-communicable diseases. These are considered lifestyle diseases and are highly preventable with right diet, exercise and living a healthy lifestyle.



FACTS AND FIGURES (continuation)



Sports and Recreation. Sport facilities present are Urdaneta Cultural & Sports Complex, Divine Word Academy Lawn Tennis, Urdaneta Tennis Club, Urdaneta City National High School Oval, Barangay School Playground, Barangay Multi-Purpose Pavement, Swimming Pools. Recreational facilities present are Don Manuel Sison Park, Billiard Halls, Resorts, Swimming Pools, Disco/Beer Houses/Videoke Bars, Computer Play Stations, Internet Café and Children's Park. Barangays in Urdaneta City have also basketball courts for sports and recreation purposes.



Tourism. Urdaneta City Fiesta and the City Charter Anniversary are the tourism activities held annually. The City Fiesta runs from the first two weeks of December in honor of its patroness saint, Our Lady of the Immaculate Conception. Colorful parade, singing and dancing, beauty pageants, cultural shows, concerts, and street parties abound during the festivities.

	¹ Frequency of Activity	² Duration of Activity
City Fiesta	Yearly	11 days
City Charter Anniversary	Yearly	7 days



Urdaneta takes pride in the Lisland Rainforest Resort in San Vicente, the Goldland Resort in Cayambanan, the Urdaneta Garden Resort in Dilan-Paurido, the Patio Olympia and Golden Green Garden in Bayaoas, and the Woodside in Pinmaludpod. The Urduja Hotel, Majoha Hotel, Ciudad Fernandino, Town Gate Park Inn also provide accommodations as well as venues for conferences and events.



FACTS AND FIGURES (continuation)



Location	Name of Tourism Establishment	Area (ha)	Type of Accomodation	Type of Tourism Services	Ownership
Bolaoen	Aljen Spring Resort	0.1	Resort	M	Private
Cayambanan	Goldland Spring Resort	1	Resort/Hotel	M	Private
San Vicente	Lisland Rainforest Resort	1.222328	Resort/Hotel	M,L	Private
Anonas	Pang. Springland Resort and Hotel	0.2	Resort/Hotel	L	Private
Dilan-Paurido	Urdaneta Garden Resort	0.3439	Resort/Hotel	M,L	Private
Palina East	Villa Lina Green Valley Resort	0.15	Resort	L	Private

Social Services. The City Social Welfare and Development Office is implementing devolved social welfare and development services of the DSWD such as the Family and Community Welfare, Child and Youth Welfare, Women Welfare, Senior Citizens Welfare, Persons with disabilities welfare and disaster management programs funded by the City Government and technical assistance from the DSWD and other national government agencies. It is mandated to provide care, protection and rehabilitation of families, individuals and communities who are at risk, vulnerable and in need various interventions to cope with their stressful conditions.



Urdaneta City has 53 Day Care Centers situated from the 34 barangays and 6 sitios. It is a barangay facility whose function is to provide early childhood care and development to 3 to 4 years old children and supports the children's rights for survival, development, protection and participations.

The Bahay Pag-asa Youth Home located at Gracia Village was established year 2015 with the funding assistance of Sen. Francis Pangilinan and the city government of Urdaneta. Its objective is to provide protective and rehabilitation custody to children in conflict with the law whose case is pending or on court progress. Its operation started January 2016 and its maintenance and operation is solely funded by the city government.

FACTS AND FIGURES (continuation)



The Crisis Center for Women and Children is a halfway home to women and children in need of special protection. Clients are provided psychosocial intervention while Social Workers are conducting case management for their immediate recovery from distress.

The Stimulation and Therapeutic Activity Center (STAC) provides treatment and rehabilitation to children with disabilities aged 14 years old and below and enable them to merge in formal education. CWD's are undergoing therapeutic treatments and rehabilitation with the assistance of the Physical Therapist, Occupational Therapist, Nurses, ECCD coordinator and child specialists. Parents are also trained on home management to continuously provide rehabilitation treatments for their children.

The Urdaneta City Evacuation Center is a facility established to provide temporary shelter to families/individuals affected by manmade or natural disaster. While at the center, affected families /individuals are provided relief assistance (food, clothings, medicines) and attain a comfort situation during the occurrence of disaster/calamities.

The Pantawid Pamilyang Pilipino Program City Operations Center is within the office of the City Social Welfare and Development Office. It has five (5) city links officers and two (2) Social welfare assistants and one (1) LGU link to assist in the implementation of the 4Ps program of the DSWD.

Type of Clientele	Previous Year			Current/Last Year	
	2014	2015	2016	No.	Percentage
Women in especially difficult circumstances	21	8	12	41	0.06
Children in need of special protection	79	71	66	216	0.35
3-4 yrs old children in need of ECCD services	2,185	2,257	2,387	6,829	11.18
Persons with Disabilities	494	1,219	684	2,397	3.92
Senior Citizens	6,204	6,913	8,653	16,770	27.47
Solo Parents	700	717	48	1,465	2.4
Distressed individuals	2,140	24,545	2,648	29,333	48.06
Pantawid Pamilyang Pilipino Program	3,985	3,985	3,981 (4 HH transferred residence)	3,981	6.52
TOTAL	15,808	39,715	18,479	61,032	

FACTS AND FIGURES (continuation)



E. Protective Services

Police Force. The actual protective services strength of cities/municipalities shall depend on the state of peace and order, population density and actual demands of the service in the particular area. The urban areas shall have a higher minimum-police-to-population ratio as prescribed by regulations. Urdaneta as component city was classified as Class "A" city with a population of 132,940. With the current Police to population ratio of 1:1,665, Urdaneta City Police Station relatively meet its basic mandates due to support endowed by the Local Government Unit (LGU) of Urdaneta in terms of the station's "Shoot"- "Move" & "Communication capability. This was compounded by personnel complement of working into two (2) shifts daily.



The average manning level of the BJMP nationwide shall be approximated as follows:

- a. Ideal Jail Guard-to-inmate = 1 jail guard

5 jail inmates
- b. Minimum Standard of jail = 1 jail guard

7 jail inmates

FACTS AND FIGURES (continuation)



Fire Fighting Personnel and Facilities. The Fire Station is located beside the Cultural and Sports Center along McArthur Highway. It is built on a 310 sq.m. lot. It has 6 operational fire trucks – 4 are owned by the City while the other 2 are owned by the Bureau of Fire Protection (BFP). In addition, the BFP has other rescue equipment such as 1 rubber boat 11 base/hand held radio, among others. The present Bureau of Fire Protection reference to determine the ideal number of fireman in every city or municipality is as follows:



- a. Fireman to Population ratio is 1:2000
- b. Fire Truck to Population ratio is 1:28,000
- c. Fire Truck to Fireman Ratio is 1:14

Type of Services	Barangay	Area (m ²)	Physical Condition of Facility	No. of Personnel	Personnel to Population Ratio	Vehicles	
						No	Types
Police							
Headquarters	Poblacion	216 m ²	Fair	58	1: 1,661	2 6	Van M/cycles
Sub Station and or Police Community Precinct (PCPs)	Anonas	32 m ²	Fair	04		1	Pick-up
	Poblacion	32 m ²	Fair	04		1	Pick-up
	Caboluan	34 m ²	Fair	04		1	Pick-up
	Cabaruan	30 m ²	Fair	04		1	Pick-up
	Pinmaludpod	42 m ²	Fair	04		1	Pick-up
Outpost	San Vicente		Fair	02			
Fire Protection							
Headquarters	Poblacion	500 m ²	Fair	27	1: 6,414	5 2	F-truck Ambulance
Jail Management							
District Jail	Anonas	2,158 m ²	Fair	38	1: 27	1	P-Van
Total							

Civilian Peacekeeping Forces. The station's operational capability in addressing the blooming traffic problems along the major thoroughfares of the city is complemented by fifty-four (54) Public Order and Safety Officer (POSO) equipped with two (2) multi-cabs, fifteen (15) radio



FACTS AND FIGURES (continuation)



transceivers and seven (7) motorcycles. This protective service is responsible in manning the two (2) crucial intersections that traverse the Manila North Road (MNR). It operates directly under the operational and control of the Chief Local Executive and at times under supervision of the PNP during crucial and big events affecting the city of Urdaneta.

As part of its Disaster Preparedness and Response, LGU Urdaneta organized and created its own disaster/rescue team working along with Bureau of Fire Protection (BFP) in responding to critical life response. At present there were twenty-eight (28) members coming from various barangays of the city to compose the operating arms of the City Disaster Risk Reduction Management Council (CDRRMC).

In addition there were twenty-three (23) auxiliary members as part of the Emergency Medical Service (EMS) response team equipped with three serviceable medical ambulances, two flood lights and complete set of medical kit.

Down to the barangay level, the Community Oriented Policing System (COPS) of the Philippine National Police (PNP) has gone a long way towards providing proactive police services to the citizens. However, a continuous effort to improve the delivery of these protective services must be implemented as peace and order and public safety concerns are constantly evolving.

The Barangay Peacekeeping Operations (BPO) and its implementers, the Barangay Peacekeeping Action Teams (BPAT) were examples that the PNP does not stop in giving the best possible policing system. To date there were four-hundred seventy-six (476) tanods/BPATS were organized in the city and being utilized as “force multipliers” or twelve (12) tanods/BPATS per barangay.

Type of Services	Number of Security Force/Volunteer	Facilities / Equipment	Condition of Facilities/ Equipment
Traffic	54 POSO personnel	15 Radio Transceiver 7 Motorcycle 2 Multicab	All operational
Peace and Order	476 BPATs	Basic Equipment	
Disaster	28	1 Rescue track	All operational
Auxiliary Services	23 Auxiliaries	3 Medical ambulance 2 Emergency lights Complete medical kit	All operational

FACTS AND FIGURES (continuation)



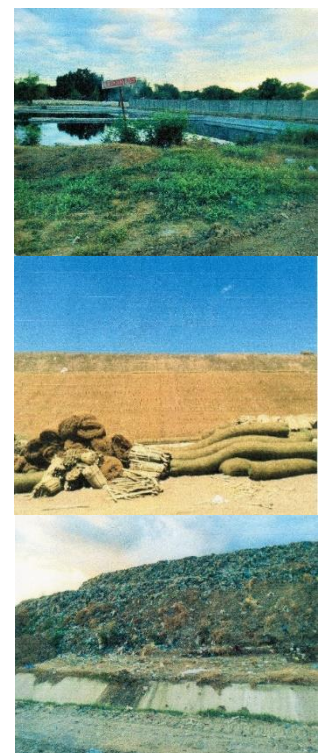
F. Environmental or Ecological Aspect

Tulongan sa Purok. Maintenance of environmental sanitation is enjoined by the whole populace by yearly conducting “TULUNGAN SA PUROK for Social & Economic Progress,” a contest to uphold the cleanliness, beautification, food production, livelihood & sanitation, and peace & order among the 34 Barangays. “Tulongan sa Purok Program” of the City government holds an annual event in recognition of the efforts of the different organizations/stakeholders in the barangays.



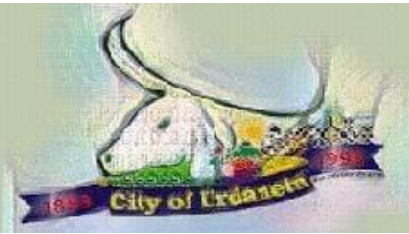
Ecological Solid Waste Management. Citizen’s participation is the key to the effective implementation of the Ecological-Solid Waste Management Program of the City of Urdaneta. The City Ecological Solid Waste Management Program reflects its commitment to environmental quality, efficient public service, and economic well-being.

The city has 225 SWM personnel (market/street sweepers, garbage collectors, landfill, park caretakers and MRF personnels). The solid waste generation of the city is about 50 metric tons daily. The LGU takes care of the collection of solid wastes city-wide. It has eight (8) collection team. Each team is compound of seven (7) personals: 1 driver, 6 helpers/ “pahenantes”.



Source	Volume of solid waste generated (tons/day)	Volume of solid waste collected (tons/day)	Disposal methods/ treatment facilities	Disposal site
Domestic	67	30	composting, recycling, reusing	Urdaneta City Sanitary Landfill
Commercial/Industrial	20	20		
Others (Educ'l Institution)	4	3		

FACTS AND FIGURES (continuation)



The city has also an Engineered Sanitary Landfill. It is located at Barangay Catablan, Urdaneta City, Pangasinan with a total area of 18,106.5 hectares. The primary concern is to prevent ground water contamination, and leachate formation and migration, thereby complying with the provisions of RA 9003.

At the landfill, the LGU has 28 personals manning different tasks, to include security, utilities, maintenance crew, tipping area personals, office personals and pumping station operators. The LGU has also a composting facility located at the Auction Market Compound. Likewise the city employs sixty (60) market and street sweepers.



Methods	Quantity (Total municipal solid waste)
1. Collected and disposed to:	
Sanitary Landfill	18,250 m.t.
2. Composting (approx)	2,000 m.t.
3. Recycling (approx)	1,867 m.t.
4. Not collected: (approx)	2,356 m.t.

Executive Order#004-2014 creating "The Bantay Pangkalikasan." Responsible in the enforcement of the "Anti-Littering Ordinances."



Executive Order # 06-2011 creating "the Bantay Ilog Task Force." This Task Force is assigned at the Macalong River, the most significant river system traversing almost the Central Business District and several urban barangays and the major tributary to the Sinocalan-Dagupan River System WQMA.



Executive Order # 005-2011 creating "the Junior Bantay Pangkalikasan". This applies in all Secondary and Elementary Schools throughout the City of Urdaneta.





2015 POPULATION AND PROJECTIONS

BARANGAY	2015	2016	2017	2018	2019	2020	2021	2022
Anonas	5,595	5,660	5,727	5,794	5,861	5,930	5,999	6,070
Bactad East	2,104	2,129	2,154	2,179	2,204	2,230	2,256	2,282
Bayaoas	5,653	5,719	5,786	5,854	5,922	5,992	6,062	6,133
Bolaoen	1,565	1,583	1,602	1,621	1,640	1,659	1,678	1,698
Cabaruan	2,281	2,308	2,335	2,362	2,390	2,418	2,446	2,475
Cabuloan	2,830	2,863	2,897	2,930	2,965	2,999	3,035	3,070
Camanang	4,484	4,536	4,590	4,643	4,698	4,753	4,808	4,864
Camantiles	6,123	6,195	6,267	6,340	6,415	6,490	6,566	6,642
Casantaan	1,559	1,577	1,596	1,614	1,633	1,652	1,672	1,691
Catablan	5,576	5,641	5,707	5,774	5,842	5,910	5,979	6,049
Cayambanan	4,008	4,055	4,102	4,150	4,199	4,248	4,298	4,348
Consolacion	1,585	1,604	1,622	1,641	1,660	1,680	1,700	1,719
Dilan- Paurido	6,185	6,257	6,331	6,405	6,480	6,555	6,632	6,710
Labit Proper	3,417	3,457	3,497	3,538	3,580	3,622	3,664	3,707
Labit West	2,443	2,472	2,501	2,530	2,559	2,589	2,620	2,650
Mabanogbog	3,349	3,388	3,428	3,468	3,509	3,550	3,591	3,633
Macalong	1,515	1,533	1,551	1,569	1,587	1,606	1,625	1,644
Nancalobasaan	3,226	3,264	3,302	3,341	3,380	3,419	3,459	3,500
Nancamaliran East	4,882	4,939	4,997	5,055	5,115	5,174	5,235	5,296
Nancamaliran West	5,383	5,446	5,510	5,574	5,639	5,705	5,772	5,840
Nancayasan	6,944	7,025	7,107	7,191	7,275	7,360	7,446	7,533
Oltama	1,393	1,409	1,426	1,442	1,459	1,476	1,494	1,511
Palina East	4,510	4,563	4,616	4,670	4,725	4,780	4,836	4,893
Palina West	2,965	3,000	3,035	3,070	3,106	3,143	3,179	3,217
Pinmaludpod	7,213	7,297	7,383	7,469	7,557	7,645	7,734	7,825
Poblacion	7,665	7,755	7,845	7,937	8,030	8,124	8,219	8,315
P.T. Orata	1,960	1,983	2,006	2,030	2,053	2,077	2,102	2,126
San Jose	5,677	5,743	5,811	5,879	5,947	6,017	6,087	6,159
San Vicente	10,572	10,696	10,821	10,947	11,076	11,205	11,336	11,469
Sta. Lucia	2,840	2,873	2,907	2,941	2,975	3,010	3,045	3,081
Sto. Domingo	3,241	3,279	3,317	3,356	3,395	3,435	3,475	3,516
Sugcong	960	971	983	994	1,006	1,017	1,029	1,041
Tipuso	1,911	1,933	1,956	1,979	2,002	2,025	2,049	2,073
Tulong	1,326	1,342	1,357	1,373	1,389	1,405	1,422	1,438
TOTAL	132,940	134,495	136,069	137,661	139,272	140,901	142,550	144,217

2015 HOUSEHOLD POPULATION AND PROJECTIONS

BARANGAY	2015	2016	2017	2018	2019	2020	2021	2022
Anonas	1,272	1,286	1,302	1,317	1,332	1,348	1,364	1,379
Bactad East	478	484	489	495	501	507	513	519
Bayaoas	1,285	1,300	1,315	1,330	1,346	1,362	1,378	1,394
Bolaoen	356	360	364	368	373	377	381	386
Cabaruan	518	524	531	537	543	549	556	562
Cabuloan	643	651	658	666	674	682	690	698
Camanang	1,019	1,031	1,043	1,055	1,068	1,080	1,093	1,106
Camantiles	1,392	1,408	1,424	1,441	1,458	1,475	1,492	1,510
Casantaan	354	358	363	367	371	376	380	384
Catablan	1,267	1,282	1,297	1,312	1,328	1,343	1,359	1,375
Cayambanan	911	922	932	943	954	965	977	988
Consolacion	360	364	369	373	377	382	386	391
Dilan-Paurido	1,406	1,422	1,439	1,456	1,473	1,490	1,507	1,525
Labit Proper	777	786	795	804	814	823	833	842
Labit West	555	562	568	575	582	588	595	602
Mabanogbog	761	770	779	788	797	807	816	826
Macalong	344	348	352	357	361	365	369	374
Nancalobasaan	733	742	750	759	768	777	786	795
Nancamaliran East	1,110	1,123	1,136	1,149	1,162	1,176	1,190	1,204
Nancamaliran West	1,223	1,238	1,252	1,267	1,282	1,297	1,312	1,327
Nancayasan	1,578	1,597	1,615	1,634	1,653	1,673	1,692	1,712
Oltama	317	320	324	328	332	336	339	343
Palina East	1,025	1,037	1,049	1,061	1,074	1,086	1,099	1,112
Palina West	674	682	690	698	706	714	723	731
Pinmaludpod	1,639	1,658	1,678	1,698	1,717	1,737	1,758	1,778
Poblacion	1,742	1,762	1,783	1,804	1,825	1,846	1,868	1,890
P.T. Orata	445	451	456	461	467	472	478	483
San Jose	1,290	1,305	1,321	1,336	1,352	1,367	1,383	1,400
San Vicente	2,403	2,431	2,459	2,488	2,517	2,547	2,576	2,607
Sta. Lucia	645	653	661	668	676	684	692	700
Sto. Domingo	737	745	754	763	772	781	790	799
Sugcong	218	221	223	226	229	231	234	237
Tipuso	434	439	445	450	455	460	466	471
Tulong	301	305	308	312	316	319	323	327
TOTAL	30,214	30,567	30,925	31,287	31,653	32,023	32,398	32,777

POPULATION DENSITY 2016

Barangay	Population	Gross Area (ha)	Population Density (Gross Barangay Area)
Urban			
Anonas	5,595	455.7	12
Bayaoas	5,653	138.83	41
Camanang	4,484	484.4	9
Camantiles	6,123	463.07	13
Catablan	5,576	773.4	7
Dilan-Paurido	6,185	216.23	29
Mabanogbog	3,349	129.07	26
Nancamaliran East	4,882	142.07	34
Nancamaliran West	5,383	315.9	17
Nancayasan	6,944	604.18	11
Palina East	4,510	236.33	19
Pinmaludpod	7,213	821.00	9
Poblacion	7,665	132.23	58
San Jose	5,677	396.73	14
San Vicente	10,572	440.27	24
Subtotal	89,811	5749.41	324
Rural			
Bactad East	2,104	170.73	12
Bolaoen	1,565	388.25	4
Cabaruan	2,281	955.40	2
Cabuloan	2,830	223.73	13
Casantaaan	1,559	439.23	4
Cayambanan	4,008	495.72	8
Consolacion	1,585	441.90	4
Labit Proper	3,417	363.90	9
Labit West	2,443	350.57	7
Macalong	1,515	320.90	5
Nancalobasaan	3,226	564.57	6
Oltama	1,393	436.57	3
Palina West	2,965	306.90	10
Pedro T. Orata	1,960	146.07	13
Sta. Lucia	2,840	141.70	20
Sto. Domingo	3,241	185.57	17
Sugcong	960	157.59	6
Tipuso	1,911	132.90	14
Tulong	1,326	126.39	10
Subtotal	43,129	6349	168
TOTAL	132,940	12,098.00	11

2010 POPULATION BY AGE GROUP AND PROJECTIONS

Grouping	2010	Participation Rate	2015	2016	2017	2027
Population	125,451		132,940	134,495	136,069	152,854
School going population	16,761	0.1336	17,762	17,969	18,180	20,422
Pre-school	4,870	0.0388	5,161	5,222	5,283	5,934
Elementary	15,947	0.1271	16,899	17,097	17,297	19,431
Secondary	13,948	0.1112	14,780	14,953	15,128	16,995
Tertiary	9,283	0.0740	9,837	9,952	10,068	11,310
Working Age(15-64)	79,087	0.6304	83,808	84,789	85,781	96,362
Labor Force	85,607	0.6824	90,717	91,779	92,853	104,307
Dependent Population	45,875	0.3657	48,614	49,182	49,758	55,896
Young (0-14)	39,355	0.3137	41,704	42,192	42,686	47,952
Old (65 and over)	6,520	0.0520	6,909	6,990	7,072	7,944

LAND USE DATA

Barangay	Land Area	% to Total	Barangay	Land Area	% to Total
Anonas	455.7	3.77	Nancalobasaan	564.57	4.67
Bactad East	170.73	1.41	Nancamaliran East	142.07	1.17
Bayaoas	138.83	1.15	Nancamaliran West	315.9	2.61
Bolaoen	388.25	3.21	Nancaysan	604.18	4.99
Cabaruan	955.4	7.9	Oltama	436.57	3.61
Cabuloan	223.73	1.85	Palina East	236.33	1.95
Camanang	484.4	4	Palina West	306.9	2.54
Camantiles	463.07	3.83	Pedro T. Orata	146.07	1.21
Casantaan	439.23	3.63	Pinmaludpod	821	6.79
Catablan	773.4	6.39	Poblacion	132.23	1.09
Cayambanan	495.72	4.1	San Jose	396.73	3.28
Dilan-Paurido	441.9	3.65	San Vicente	440.27	3.64
Consolacion	216.23	1.79	Sta. Lucia	141.7	1.17
Labit Proper	363.9	3.01	Sto. Domingo	185.57	1.53
Labit West	350.57	2.9	Sugcong	157.59	1.3
Mabanogbog	129.07	1.07	Tiposu	132.9	1.1
Macalong	320.9	2.65	Tulong	126.39	1.04

NATIONAL ROAD INVENTORY					
Name of Road	Length	Form Width (m)	C-Way Width (m)	Surface Types (km)	
	(km)			Concrete	Asphalt
1. Urdaneta Jct.-Dagupan-Lingayen Road	9.48				9.48
2. Manila North Road	8.73			2.37	6.36
6. TPLEX	8.0	12.0	6.0		8

PROVINCIAL ROAD INVENTORY				
Name of Roadline	STATION	LENGTH (Km)	T Y P E	
			CONCRETE	ASPHALT
1.Caboloan-Nancalobasaan Road	km. 185.500 - 187.200	1.700	1.700	
2.Pinmaludpod- Labit Proper Road	km. 186.000 - 191.400	5.400	5.400	
3. Urdaneta-Comm. High School	km. 183.100 - 183.600	0.500	0.500	
4.Catablan-Labit- Cabaruan Road	km. 190.900 - 195.610	4.710	4.710	
5.Sison Street	km. 182.400 - 183.200	0.800	0.800	
6.Nancayasan-Palina Road	km. 180.600 - 186.100	5.500	5.500	
7.Nancayasan-Carusucan Road	km. 180.800 - 185.100	4.300	4.300	
8.Urdaneta-Cili Jct. Road	km. 182.900 - 188.122	5.222		5.222
9.Urdaneta-Asingan via Calepaan	km. 187.700 - 189.640	1.940		1.940
10.Urdaneta-Asingan-Tayug Road	km. 182.500 - 188.850	6.350	6.350	
11. Urdaneta-Manaoag Road	km. 182.900 - 187.164	4.264	2.664	1.600
12. Mapandan-Urdaneta Road	km. 204.668 - 206.258	1.590	0.590	1.000
TOTAL		42.276	32.514	9.762

BARANGAY ROAD INVENTORY				
BARANGAY	ROAD SURFACE TYPE			
	CONCRETE	ASPHALT	GRAVEL	EARTH
	L(MTS)	L(MTS)	L(MTS)	L(MTS)
ANONAS	2,500		1050	600
BACTAD EAST	7,761		630	1380
BOLAOEN	7,016			2791
BAYAOAS	8,670			
CAMANANG	7,184	346	1020	
CABULOAN	7,800		200	
CABARUAN	7,102.50	225	1147	
CAMANTILES	1,990			
CASANTAAN	7,800		4000	
CATABLAN	12,765		1430	635
CAYAMBANAN	6,564.35		282.8	
CONSOLACION	6,758	420	1795	8
DIALN-PAURIDO	10,534		1785	90
LABIT PROPER	8,217		652	405
LABIT WEST	1,670	90	50	250
MACALONG	345.00			
MABANOGBOG	4,516.07		52	426.35
NANCAYASAN	15,605.05			
NANCAMALIRAN EAST	11,610	410	20	
NANCAMALIRAN WEST	4,336		1136	
NANCALOBASAAN	7,390			
OLTAMA	6,529	2004	350	
P.T. ORATA	8,750			
PALINA EAST	3,915			
PALINA WEST	8,750		650	600
POBLACION	5,250			
PINMALUDPOD	6,630		2400	800
SAN JOSE	7,698.50		1442.5	83
STO. DOMINGO	5,770		2770	2170
STA. LUCIA	432			
SAN VICENTE	8,066			
SUGCONG	3,550			
TIPOSU	4,828		170	
TULONG	3,723		740	
Sub-TOTAL	222,025	3,495	23,772.30	10,238.35
GRAND Total	259,531			

INVENTORY OF NATIONAL BRIDGES				
Name of Bridge	Type of Bridge Structure	Number of Span	Length per Span (in meters)	Total Length
				(in meters)
Macalong Bridge	Reinforced Concrete	1	24.90	24.90
Mitura Bridge	Reinforced Concrete	3	12.50	37.50
Tabuyoc Bridge	Reinforced Concrete	3	12.00	36.00
Vilamil Bridge	Reinforced Concrete	5	9.00	45.00

INVENTORY OF PROVINCIAL BRIDGES		
Name of Bridge	RoadLine	CONCRETE (m) LENGTH
Cabuloan Bridge (RCBC)	Cabuloan-Nancalobasaan Road	8.00
Daong Bridge #1	Pinmaludpod – Labit Proper – Cabaruan Road	12.00
Daong Bridge #2	Pinmaludpod – Labit Proper – Cabaruan Road	18.00
Labit Proper Bridge	Pinmaludpod – Labit Proper – Cabaruan Road	33.00
Cabaruan Bridge	Pinmaludpod – Labit Proper – Cabaruan Road	12.00
Labit West Bridge	Catablan – Labit West – Cabaruan Road	12.00
Urdaenta Com. School Bridge	Urdaneta Community School Road	36.00
Mitura Bridge	Urdaneta Cili Junction Road	15.00
Bayaoas Bridge	Urdaneta – Asingan Road	6.00
Mabanogbog Bridge	Urdaneta – Manaoag Road	15.00
Mitura Bridge	Urdaneta – Manaoag Road	75.00
Calegu Bridge	Mapandan – Urdaneta Road	94.00
TOTAL		336.00

COMMUNICATION SERVICE FACILITIES

Type	Year Constructed	Area Occupied (ha)	Barangay	Ownership	
				Public	Private
Postal Services	1990	0.04	Poblacion	1	
Network(Local Radio)	2009	0.002	Poblacion		1
CELLSITE NETWORK					
Globe	1996	0.0175	San Vicente		1
Digitel	2008	0.0288	San Vicente		1
Smart	2002	0.0147	Anonas		1
Digitel Telecom	2008	0.0288	Anonas		1
Digitel	2003	0.0192	Poblacion		1
Digitel Mobile	2004	0.018335	Poblacion		1
Smart Comm	2007	0.03	Poblacion		1
GSM Cellsite	2004	0.0114	Dilan-Paurido		1
Globe Telecom	2005	0.0256	Dilan-Paurido		1
GSM Cellsite	2004	0.0114	Pinmaludpod		1
Globe Telecom	2005	0.0256	Pinmaludpod		1
Globe Telecom	2005	0.025	Labit Proper		1
Digitel Mobile	2009	0.0225	Labit Proper		1
Globe Telecom	2003	0.0575	Nancayasan		1
Smart Comm	2005	0.03	Nancayasan		1
Digitel Phils	2008	0.0288	Nancayasan		1
Digitel Mobile	2009	0.0256	Nancayasan		1
Globe Telecom	2005	0.0256	Nancayasan		1
Globe Telecom	2005	0.0256	Palina East		1
Globe Telecom	2005	0.0256	Palina East		1
Globe Telecom	2005	0.0256	San Jose		1
Globe Telecom	2005	0.0256	Nancamaliran East		1
Globe Telecom	2005	0.0256	Camanang		1
Globe Telecom	2006	0.0256	Cayambanan		1
Digitel Phils	2008	0.0288	Cayambanan		1
Digitel Mobile	2008	0.0225	Camantiles		1
Globe Telecom	2014	0.0114	Camantiles		1
Globe Telecom	2014	0.0114	Cabaruan		1
Smart Comm	2010	0.03	Cabaruan		1
Digitel Phils	2008	0.0225	Nancamaliran West		1
Globe Telecom	2008	0.04	Labit Proper		1
Digitel Mobile	2009	0.0225	Labit Proper		1
Smart Comm	2011	0.0115	Cabuloan		1
Globe Telecom	2016	0.0225	Nancalobasaan		1

HOUSEHOLD CONNECTIONS PER BARANGAY, 2014-2016

Barangay	SERVED		
	2014	2015	2016
<u>Urban</u>			
Anonas	989	1016	1060
Bayaoas	1033	1070	1089
Camanang	726	758	791
Camantiles	1207	1247	1291
Catablan	1018	1055	1095
Dilan-Paurido	1058	1111	1167
Mabanogbog	762	796	821
Nancamaliran East	1301	1349	1390
Nancamaliran West	787	812	833
Nancayasan	2920	3080	3133
Palina East	402	425	438
Pinmaludpod	1257	1320	1360
Poblacion	3932	3962	3996
San Jose	790	821	846
San Vicente	2786	2906	2967
<u>Rural</u>			
Bactad East	391	408	424
Bolaoen	364	376	381
Cabaruan	408	425	440
Cabuloan	612	634	647
Casantaaan	288	294	319
Cayambanan	782	807	832
Consolacion	255	260	273
Labit Proper	678	708	737
Labit West	513	528	552
Macalong	264	298	316
Nancalobasaan	480	495	505
Oltama	312	323	329
Palina West	632	663	689
Pedro T. Orata	377	387	397
Sta. Lucia	465	501	524
Sto. Domingo	734	757	768
Sugcong	260	267	277
Tipuso	342	330	345
Tulong	381	390	400
TOTAL	29,506	30,579	31,432

WATER SERVICE PER BARANGAY (RESIDENTIAL) 2016

<u>Barangay</u>	No. of Connections	Cu. M	Ave. Water Consumption (lcpd)
<u>Urban</u>			
Anonas	280	4,555	131
Bayaoas	633	11,281	144
Camanang	230	3,792	133
Camantiles	200	3,523	142
Catablan	336	5,249	126
Dilan-Paurido	495	8,506	139
Mabanogbog	297	4,694	127
Nancamaliran East	396	6,034	123
Nancamaliran West	247	3,755	123
Nancayasan	1073	18,716	141
Palina East	187	2,572	111
Pinmaludpod	427	6,941	131
Poblacion	1126	21,835	156
San Jose	282	4,959	142
San Vicente	978	17,126	141
<u>Rural</u>			
Bactad East	112	1,574	113
Bolaoen	28	355	102
Cabaruan	-	-	-
Cabuloan	231	3,338	117
Casantaaan	64	790	100
Cayambanan	155	2,263	118
Consolacion	-	-	-
Labit Proper	152	2,535	134
Labit West	101	2,034	162
Macalong	-	-	-
Nancalobasaan	146	2,008	111
Oltama	-	-	-
Palina West	55	863	111
Pedro T. Orata	121	1,655	110
Sta. Lucia	111	1,567	114
Sto. Domingo	285	4,388	124
Sugcong	-	-	-
Tipuso	-	-	-
Tulong	48	754	127
Total	8,796	147,662	

WATER CONSUMPTION BY COMMERCIAL CONSUMERS, 2016

Barangay	No. of Connections	Cu. M	Ave. Water Consumption (cumd)
<u>Urban</u>			
Anonas	28	960	1.1
Bayaoas	16	1,332	2.7
Camanang	4	149	1.2
Camantiles	1	80	2.6
Catablan	2	34	0.5
Dilan-Paurido	9	147	0.5
Nancamaliran East	3	19	0.2
Nancamaliran West	1	6	0.2
Nancayasan	150	4,329	0.9
Palina East	1	5	0.2
Pinmaludpod	8	324	1.3
Poblacion	575	12,044	0.7
San Jose	4	103	0.8
San Vicente	154	2670	0.6
<u>Rural</u>			
Bactad East	2	62	1.0
Cabuloan	2	20	0.3
Cayambanan	1	16	0.5
Nancalobasaan	2	16	0.3
Pedro T. Orata	1	38	1.2
Sto. Domingo	1	8	0.3
Total	965	22,362	0.7

WATER CONSUMPTION BY GOVERNMENT/ INSTITUTIONS, 2016

Barangay	No. of Connections	Cu. M	Ave. Water Consumption (cumd)
<u>Urban</u>			
Anonas	10	1,401	4.5
Bayaoas	5	597	3.9
Camanang	1	5	0.2
Dilan-Paurido	9	799	2.9
Mabanogbog	2	116	1.9
Nancamaliran East	1	55	1.8
Nancayasan	12	573	1.5
Palina East	2	190	3.1
Pinmaludpod	3	168	1.8
Poblacion	38	2,126	1.8
San Jose	2	100	1.6
San Vicente	9	1406	5.0
<u>Rural</u>			
Bactad East	2	44	0.7
Bolaoen	2	36	0.6
Cabuloan	3	138	1.5
Cayambanan	3	108	1.2
Labit Proper	3	53	0.6
Labit West	1	4	0.1
Nancalobasaan	2	194	3.1
Palina West	2	168	2.7
Pedro T. Orata	2	16	0.3
Sta. Lucia	2	87	1.4
Sto. Domingo	1	2	0.1
Tulong	1	27	0.9
Total	118	8,413	2

INVENTORY OF RESIDENTIAL SUBDIVISIONS

Name of Subdivision/ Condominium	Type	Barangay	Area (ha)
Dona Trining Subdivision	PD 957	Camantiles	1.70
Del Prado Village	PD 975	Dilan-Paurido	4.00
Taaca Village	PD 975	Dilan-Paurido	
Gracia Village	PD 975	Nancayasan	
Dona Pepang Subdivision	PD 975	San Vicente	
Dona Loleng Subdivision	PD 975	Nancayasan	
Glenville Subdivision I	PD 975	San Vicente	6.60
Glenville Subdivision II	PD 975	San Vicente	3.50
Las Villas Urdaneta	Socialised Housing	Catablan	2.90
Teachers Ville Subdivision	BP 220	Mabanogbog	2.43
Dona Olympia Townhomes	BP 220	Sto. Domingo	2.20
Urdaneta Village Townhomes	PD 957	Nancayasan	0.60
Vista Verde Royale	PD 957	Nancayasan	5.40
City Homes Urdaneta	Socialised Housing	Dilan-Paurido	0.73
Vista Urdaneta	PD 957	Nancayasan	0.80
AGL Subdivision	PD 957/ BP 220	Nancayasan	17.90
PSU Executive Village	PD 957	San Vicente	2.10
Woodside Garden Village	PD 957	Pinmaludpod	14.19
Greenville North Subdivision	PD 957/ BP 220	Anonas	15.11
St. Sophia Subdivision	PD 957	Pinmaludpod	4.22
Manors Subdivision	PD 957	Dilan-Paurido	0.52
Northwood Townhouse	PD 957	Nancayasan	0.33
Residencia	PD 957	San Vicente	0.55
Amaia Land Corp.	PD 957	Catablan	14.82
Woodside Garden Village Phase 2c	PD 957	Labit West	7.40
RDSBI Homes	PD 957	Nancamaliran West	0.99
National Housing Authority	Socialised Housing	Bactad East	7.13
Astral Subdivision	PD 975	San Vicente	0.71
Divine Homes	PD 975	Bayaoas	0.12

LIST OF REGISTERED COMMERCIAL ESTABLISHMENTS, 2016

Furniture and Upholstery Shop/ Appliance Center and Appliance Service Center/ Wood Shop and Craft Shop	26
Glass and Aluminum Store	5
Bakery/ Bakeshop/ Baking Supply Store	45
Dressed Chicken/ Chicken Stall/ Egg and Balut Store	44
Restaurant/ Bar/ Disco/ Food Stall/ Food Stand/ Food Kiosk/ Food Center/ Food Producer/ Lechon Manok House/ Canteen/ Carinderia/ Eatery/ Gotohan/ Mami House/ Lugawan/ Panciteria/ Milk Tea/ Tea House/ Coffee Shop	405
Fish/ Dried Fish/ Smoked Fish/ Bagoong Retailer/ Dealer/ Wholesaler/ Manufacture/ Fishport	96
Cereals/ Palay/ Grains/ Rice/ Corn/ Rice Mill/ Cono	92
Baguio Vegetables/ Fruits and Vegetables/ Fruits/ Vegetables/ Spices Dealer/ Retailer/ Wholesaler	581
Meat and Frozen Food Dealer/ Retailer/ Wholesaler	73
Grocery/ Mini-Mart/ Convenience Store/ Sari-sari Store/ Variety Store/ Dealer, Retailer, Wholesaler or Manufacture of Various Products	556
Water Refilling Station/ Ice Dealer or Retailer/ Ice Plant	49
Enterprises/ General Merchandise/ Trading	175
Cattle/ Poultry Farm/ Piggery/ Livestocks	21
Garden/ Nursery/ Plant Retailer	9
Barber Shop/ Beauty Parlor or Salon/ Health Shop/ Herbal Medicine, Soap or Supplement/ Skin Clinic/ Spa Center/ Massage Center/ Cosmetics and Beauty Products/ Gym and Fitness Center	140
Boutique/ Dry Goods/ Gift Shop/ RTW/ Apparel Shop/ Gown Shop/ Wedding Gown and Accessories/ Dress Shop and Tailoring/ Ukay-ukay/ Accessories Shop	262
Footwear/ Shoe Store/ Slipper	36
Apartment/ Apartelle/ Lodge/ Inn/ Hotel/ Boarding House/ Dormitory/ Lessors/ Leasing Services/ Real Estate Developers/ Subdivision/ Socialized Housing/ Resort	511
Construction Firm/ Building/ Construction Supply/ Hardware/ Lumber/ Paint Center/ Stone and Marble Center/ Tile Center/ Hollow Block Factory/ Junk Shop/ Metal, Steel/ Iron Works	103
Bodega/ Store Room/ Store House/ Warehouse	22
Emission Testing Center/ Quarrying/ Waste Management	11
Amusement Center/ Toy Store/ Children Playhouse/ Balloons and Party Needs	30
Computer/ Internet Shop/ Game Shop/ CD, VCD, or DVD Sales or Rental	116
Art Shop and T-Shirt Printing Shop/ Photo and Video Studio	32
Copy Center/ Print Shop/ Printing Press	29
Driving School Center/ Training Center/ Learning or Tutorial Center/ Educational Institution/ Music or Studio/ Dance Studio	56
Bookstore/ Office and School Supply	20
Medical Clinic/ Dental Clinic/ Optical Clinic/ Hospital/ Medical and Dental Laboratory and Supply/ Drug Testing Laboratory/ Drugstore/ Pharmacy	114
Veterinary Clinic/ Pet Shop	5
Agricultural Products, Supply or Equipment/ Farm Implements/ Poultry Supply/ Pest Control	67
Bank/ Financial Institution/ Lending Company/ Micro Finance/ Pawnshop/ Money Changer/ Remittance Center/ Cooperative/ NGO/ Insurance and Pre-Need Plan Companies	203
Broadcasting/ Communication/ Telecommunication/ Cable TV Distribution/ Cellphone and Cellphone Accessories/ Courier/ Delivery Services/ Messengerial Services/ Trucking Services/ Transportation/ Terminal/ Parking Lot/ Tribike	363
Gasoline Station/ Gasoline Refilling Station/ LPG Station/ Fire Fighting Supply	41
Flower Shop/ Funeral Home/ Funeral Parlor	18
Private Cemetery	2
Security Agent or Security Services/ Fire and Ammunition Shop or Gun Store	5
Various Services	149
Electricity	2
Recruitment Agency/ Employment Agency/ Travel Agency	32
Cockpit Arena/ Lotto Outlet/ Jai-Alai	7
Others	293
TOTAL	4,846

BUSINESS PERMITS GRANTED FOR THE PAST FIVE YEARS

Business Permits	2012		2013		2014		2015		2016	
	No.	%	No.	%	No.	%	No.	%	No.	%
Primary										
Agricultural Products/supply	31	97%	33	97%	36	97%	42	98%	40	98%
Quarrying	1	3%	1	3%	1	3%	1	2%	1	2%
Primary Sub-Total	32	0%	34	1%	37	1%	43	1%	41	1%
Secondary										
Manufacturing	12	18%	11	17%	11	16%	8	12%	10	14%
Gasoline station/refilling station	16	24%	16	25%	16	23%	17	26%	22	30%
Private Contractors/lumber	40	59%	37	58%	42	61%	41	62%	41	56%
Secondary Sub-Total	68	1%	64	1%	69	1%	66	1%	73	1%
Tertiary										
Wholesale and retail-minimum gross sales	626	10%	620	10%	615	10%	590	9%	646	10%
Hotels/Restaurants/Canteen	60	1%	59	1%	54	1%	55	1%	55	1%
Transport, Storage & Communication	22	0%	22	0%	21	0%	19	0%	19	0%
Banks/lending	100	2%	100	2%	103	2%	105	2%	115	2%
Real Estate, Renting & Business Activities	387	6%	384	6%	396	6%	399	6%	430	6%
Security Guards	3	0%	2	0%	3	0%	1	0%	2	0%
School - Primary/Secondary/College/Vocational	22	0%	22	0%	21	0%	20	0%	19	0%
Spa/salon	80	1%	85	1%	78	1%	98	2%	99	1%
Hairdressing, Beauty Treatment	124	2%	119	2%	111	2%	130	2%	140	2%
Maids, Cook, Caretakers, Secretaries, Baby sitters, Tutor, Waiter etc.	4,989	78%	4,910	78%	4,811	77%	4,915	78%	5,215	77%
Tertiary Sub-Total	6,413	98%	6,323	98%	6,213	98%	6,332	98%	6,740	98%
TOTAL	6,513		6,421		6,319		6,441		6,854	

INVENTORY OF COMMERCIAL ESTABLISHMENTS BY
ECONOMIC ACTIVITIES, 2016

Economic Activities	2015		2016		% Inc/(Dec.)	
	No. of Establishments	No. of Employment	No. of Establishments	No. of Employment	No. of Establishments	No. of Employment
Wholesale and Retail Trade	590	1180	648	1292	10	0
Hotel and Restaurants, Transport & Storage	71	3900	71	3900	0	0
Communication	3	6	3	6	0	17
Financial Intermediation	105	315	115	320	10	0
Real Estate	21	63	22	66	5	2
Renting and Business Activities	378	1134	408	1224	8	0
Public Administration and Defense	1	2	2	4	100	100
Education	20	420	19	401	5	0
Health and Social Work	98	305	99	312	1	0
Other Community, Social and Personal Service Activities	130	410	140	480	8	0
Private Household with Employed persons	4059	4915	4100	5218	1	0
TOTAL	5,476	12,650	5,627	13,223	3	0

EMPLOYMENT BY TYPE OF BUSINESS AND TRADE, 2016

Type/Classification Kind of Business and Trade	No. of Employees	Gross Sale
Wholesale Trade and Retail	1,292	749,784,121.68
Banking and Finances	320	506,652,789.38
Real Estate/ Construction	304	501,792,238.87
Services	5,177	2,618,007,487.36
TOTAL	7,093.00	4,376,236,637.29

ACCESSIBILITY OF TOURISM ESTABLISHMENT AND TOURIST ATTRACTION

Name Of Tourism Establishment	Means Of Transportation	Distance From Nearest Airport (km)	Distance From National Highway (km)	Access Road Pavement/ Condition	Accessibility
Aljen Spring Resort	Land	99 km.	3 km	Cement/Good	1
Goldland Spring Resort	Land	100 km.	3 km	Cement/Good	1
Lisland Rainforest Resort	Land	94 km.	Along the H-Way	Cement/Good	1
Pang. Springland Resort And Hotel	Land	99 km.	1 km.	Cement/Good	1
Urdaneta Garden Resort	Land	97 km.	2 km.	Cement/Good	1
Villa Lina Green Valley Resort	Land	105 km.	10 km.	Cement/Good	1
Fray Andres De Urdaneta Park	Land	99 km.	Along the H-Way	Cement/Good	1
Urdaneta City Landmark	Land	94 km.	Along the H-Way	Cement/Good	1
Don Manuel Sison, Sr. Park	Land	94 km.	Along the H-Way	Cement/Good	1
Museo De Urdaneta	Land	94 km.	Along the H-Way	Cement/Good	1
Convention & Sports Center	Land	94 km.	Along the H-Way	Cement/Good	1
Urdaneta City Livelihood Skills And Training Center	Land	94 km.	Along the H-Way	Cement/Good	1
Urdaneta City Pasalubong Center	Land	94 Km.	Along the H-Way	Cement/Good	1
Urdaneta City Bagsakan Market	Land	94 Km.	.25 km	Cement/Good	1
Urdaneta City Livestock Market	Land	99 Km.	Along the H-Way	Cement/Good	1
Engineered Sanitary Landfill	Land	105 Km	1 km.	Cement/Good	1

COMPARATIVE AREA UTILIZATION OF SIGNIFICANT
AGRICULTURAL ACTIVITIES, 2014-2016

Activities	Year 2014		Year 2015		Year 2016	
	Area (ha)	%	Area (ha)	%	Area (ha)	%
Crop Production	5,056	99%	4,777.95	98.99	4,624	98.84
Livestock/Poultry	10	0.19	12	0.248	15	0.32
Fishing	34.73	0.68	36.73	0.762	38.73	0.82
TOTAL	5,101	100	4,826.68	100	4,678	100

COMPARATIVE AGRICULTURAL CROP AREAS AND
PRODUCTION, 2015-2016

MAJOR CROPS	AREA HECTARE			VOLUME OF PRODUCTION MMT		
	2015	2016	% INCREASE/ DECREASE	2015	2016	% INCREASE/ DECREASE
Rice	5,056	4,624	(8.5)	600	462	(38)
Corn	224.5	218	(2.9)	140.51	157.88	0.8
Ampalaya	50.5	51	0	101.00	101.00	0
Tomato	52.2	75	43.7	104.40	135.00	29.31
Eggplant	69.9	69.9	0	133.70	125.82	(5.9)
Sitao	36.25	36.5	0	65.20	65.20	0
Mango	775	775	0	109	109	0
TOTAL	6,264	5,953		1,253	1,156	

RICE PRODUCTION BY AREA, PRODUCTION AND MARKET, 2016

Location	Area		Annual Production		Product Market	No. of Farmers	No. of Tenants	Type of Farming Technology	Existing Agricultural Support Facilities	
	Ha.	% Utilization	Volume (000)	Value (Php) '000					Pre-Harvest	Post-Harvest
Anonas	160	1.32	1,280.00	19,200.00	Local	160	35	Modern	32	10
Bactad East	167.5	1.38	1,340.00	20,100.00	Local	147	45	Modern	28	9
Bayaoas	110	0.91	880.00	13,200.00	Local	79	15	Modern	16	6
Bolaoen	148	1.22	1,184.00	17,760.00	Local	115	39	Modern	23	6
Cabaruan	127.95	1.06	1,023.60	15,354.00	Local	142	22	Modern	27	6
Cabuloan	152.6	1.26	1,220.80	18,312.00	Local	165	40	Modern	31	13
Camanang	167	1.38	1,336.00	20,040.00	Local	232	60	Modern	45	5
Camantiles	93.18	0.77	745.44	11,181.60	Local	132	26	Modern	27	6
Casantaan	138.8	1.15	1,110.40	16,656.00	Local	102	20	Modern	20	8
Catablan	218	1.80	1,744.00	26,160.00	Local	220	46	Modern	43	14
Cayambanan	228	1.88	1,824.00	27,360.00	Local	207	38	Modern	42	4
Consolacion	136.16	1.13	1,089.28	16,339.20	Local	132	30	Modern	26	8
Dilan Paurido	130	1.07	1,040.00	15,600.00	Local	93	18	Modern	16	8
Labit Proper	157.24	1.30	1,257.92	18,868.80	Local	186	38	Modern	37	
Labit West	128	1.06	1,024.00	15,360.00	Local	115	20	Modern	23	20
Mabanogbog	80	0.66	640.00	9,600.00	Local	97	15	Modern	17	3
Macalong	124.46	1.03	995.68	14,935.20	Local	140	28	Modern	28	8
Nancalobasaan	220	1.82	1,760.00	26,400.00	Local	213	43	Modern	41	8
Nancamaliran East	160.38	1.33	1,283.04	19,245.60	Local	120	21	Modern	24	6
Nancamalira West	152	1.26	1,216.00	18,240.00	Local	240	39	Modern	48	8
Nancayasan	203.62	1.68	1,628.96	24,434.40	Local	140	21	Modern	28	13
Oltama	98.3	0.81	786.40	11,796.00	Local	107	18	Modern	21	3
Palina East	192.21	1.59	1,537.68	23,065.20	Local	188	34	Modern	37	12
Palina West	98.95	0.82	791.60	11,865.00	Local	140	31	Modern	28	8
Pedro T. Orata	85.7	0.71	685.60	10,275.00	Local	89	11	Modern	16	4
Pinmaludpod	105.9	0.88	847.20	12,708.00	Local	103	19	Modern	20	2
San Jose	218.53	1.81	1,748.24	26,223.60	Local	198	38	Modern	36	2
San Vicente	160	1.32	1,280.00	19,200.00	Local	175	35	Modern	32	2
Sta. Lucia	82.12	0.68	656.96	9,854.40	Local	85	10	Modern	14	6
Sto. Domingo	129	1.07	1,032.00	15,480.00	Local	118	39	Modern	22	7
Sugcong	65.35	0.54	522.80	7,842.00	Local	88	15	Modern	15	6
Tipuso	110.05	0.91	880.40	13,206.00	Local	121	20	Modern	23	7
Tulong	75	0.62	600.00	9,000.00		76	9	Modern	11	4

OTHER CROPS PRODUCTION, 2016

Major Crop	Area		Annual Production	
	Ha.	% Utilization	Volume (000)	Value (Php) '000
Corn	218	1.80%	1,417.00	15,587.00
Ampalaya	775	6.41%	10,850.00	162,750.00
Tomato	51	0.42%	1,010.00	30,300.00
Sitao	75	0.62%	1,350.00	13,500.00
Eggplant	36.5	0.30%	652.00	9,780.00
Mango	69.9	0.58%	1,258.00	22,644.00
TOTAL				

POST HARVEST FACILITIES

Post-Harvest Facilities	No.	% Utilization	Type/ Capacity	Remarks
Rice Mill	26	100	Stationary/Mobile	Operational
Corn Sheller	4	100	Mobile	Needs repair
Multi-Purpose Drying Pavement	37	100	Concrete/400sq.m.	Operational
Private Thresher	136	10	Mobile	Operational/Needs repair
Blowers	136	10		Operational/ Needs repair
Hand Tractor	775	100		Operational/ Needs repair
Combine Harvester	8	100	crawler/4 ha./day	operational

WATER IRRIGATION SYSTEM, 2016

Irrigation system	Year Constructed	Type of Ownership	Type of Irrigation	Area Served (ha)
National Irrigation				
Anonas	2014	Public	Open canal	145
Bactad East	2014	Public	Open canal	212
Bayaoas	2014	Public	Open canal	108
Bolaoen	2014	Public	Open canal	151
Cabuloan	2014	Public	Open canal	160
Camanang	2014	Public	Open canal	100
Camantiles	2014	Public	Open canal	95
Casantaan	2014	Public	Open canal	130
Catablan	2007	Public	Open canal	35
Cayambanan	2014	Public	Open canal	284
Consolacion	2014	Public	Open canal	100
Dilan-Paurido	2014	Public	Open canal	125
Labit Proper	2014	Public	Open canal	150
Labit West	2014	Public	Open canal	75
Mabanogbog	2014	Public	Open canal	80
Macalong	2014	Public	Open canal	128
Nancalobasaan	2014	Public	Open canal	150
Nancamaliran East	2014	Public	Open canal	100
Nancamaliran West	2014	Public	Open canal	100
Nancayasan	2014	Public	Open canal	150
Palina East	2014	Public	Open canal	100
Palina West	2014	Public	Open canal	85
P.T. Orata	2014	Public	Open canal	90
Pinmaludpod	2014	Public	Open canal	50
San Jose	2014	Public	Open canal	50
San Vicente	2014	Public	Open canal	166
Sta. Lucia	2014	Public	Open canal	60
Sto. Domingo	2014	Public	Open canal	100
Tipuso	2014	Public	Open canal	60
Tulong	2014	Public	Open canal	70
Water Pump				
Rainfed Agri Areas	3ha/unit 700	Private	Shallow wells	2,100
SWIP (Small Water Impounding)				
Oltama	1999	Public	Impounding pit	20

LIVESTOCK AND POULTRY PRODUCTION PER BARANGAY, 2016

Barangay	LIVESTOCK					POULTRY		Production Classification
	Carabao	Cattle	Hog	Goat	Production Classification	Poultry (Native/Broiler)	Product Market	
Anonas	18	30	70	40	Backyard	1,080	Local	Backyard
Bactad East	5	25	60	80	Backyard	650	Local	Backyard
Bayaoas	5	15	85	77	Backyard	750	Local	Backyard
Bolaoen	4	20	95	54	Backyard	660	Local	Backyard
Cabaruan	2	108	1080	370	Backyard	192900	Local	Backyard
Cabuloan	7	20	270	85	Backyard	72900	Local	B/Commercial
Camanang	4	18	95	68	Backyard	895	Local	Backyard
Camantiles	4	170	268	55	Backyard	2300	Local	Backyard
Casantaan	3	32	90	50	Backyard	880	Local	Backyard
Catablan	4	30	115	68	Backyard	1180	Local	Backyard
Cayambanan	70	67	90	70	Backyard	1640	Local	Backyard
Consolacion	18	35	97	75	Backyard	1421	Local	Backyard
Dilan Paurido	3	15	50	62	Backyard	1111	Local	Backyard
Labit Proper	8	33	140	72	Backyard	1210	Local	Backyard
Labit West	1	23	80	65	Backyard	900	Local	Backyard
Mabanogbog	1	7	40	47	Backyard	780	Local	Backyard
Macalong	9	35	2910	50	Backyard	1509	Local	Backyard
Nancalobasaan	15	40	95	45	Backyard	1160	Local	Backyard
Nancamaliran East	3	12	80	48	Backyard	1315	Local	Backyard
Nancamalira West	2	10	55	49	Backyard	994	Local	Backyard
Nancayasan	8	30	140	87	Backyard	950	Local	Backyard
Oltama	2	40	41	325	Backyard	1123	Local	Backyard
Palina East	5	38	90	72	Backyard	1640	Local	Backyard
Palina West	5	61	69	54	Backyard	1240	Local	Backyard
Pedro T. Orata	6	21	73	61	Backyard	1121	Local	Backyard
Pinmaludpod	5	34	84	53	Backyard	1307	Local	Backyard
Poblacion	-	-	-	-	-	1001	Local	Backyard
San Jose	7	80	1050	0	Backyard	1610	Local	B/Commercial
San Vicente	3	5	95	250	Backyard	1360	Local	Backyard
Sta. Lucia	6	32	65	59	Backyard	1400	Local	Backyard
Sto. Domingo	5	20	68	43	Backyard	1040	Local	Backyard
Sugcong	4	51	55	52	Backyard	1430	Local	Backyard
Tipuso	6	25	108	75	Backyard	176080	Local	B/Commercial
Tulong	29	29	75	86	Backyard	1214	Local	Backyard

AGRICULTURAL OCCOUPATIONS/ GROUPS IN URBAN AND RURAL AREAS, 2016

Major and Minor Occupations	Barangay	Urban			Rural			TOTAL		
		Male	Female	Total	Male	Female	Total	Male	Female	Total
Farmers										
Crop farmers	citywide	1,879	298	2,177	2,246	233	2,479	4,125	531	4,656
Orchard farmers	citywide	151	35	186	175	20	195	326	55	381
Ornamental and Other Plant Growers	Anonas, Tulong, Nancayasan, Catablan, Pinmaludpod	5	15	20			-	5	15	20
Livestock and dairy farmers	citywide	200	35	235	319	25	344	519	60	579
Poultry farmers	citywide	679	126	805	932	103	1,035	1,611	229	1,840
Farm workers	citywide	15	10	25	24	22	46	39	32	71
Fisherfolks										
Aqua-farm cultivators	Nancayasan	1		1			-	1	-	1
TOTAL		1,884	313	2,197	2,246	233	2,479	4,130	546	4,676

AGRARIAN REFORM COMMUNITIES, 2016

Agrarian Reform Communities		
Location	Area (ha)	No. of Farmer Beneficiaries
Poblacion	1.5420	2
Pinmaludpod	181.9292	206
Dilan Paurido	11.7570	56
Bactad Proper	2.1596	3
Bactad East	0.8669	2
Consolacion	4.3373	10
Nancamaliran East	1.3270	2
Nancamaliran West	0.8957	1
Nancayasan	46.3900	67
Nancalobasaan	24.3280	33
Palina East	7.5092	5
San Jose	147.8520	212
Labit West	13.8057	27
Cabaruan	20.2550	9
Oltama	38.8163	64
Bolaoen	5.1334	13
Tiposu	2.1800	7
Catablan	59.0360	76
Cayambanan	17.8525	15
Anonas	58.3992	75
Cabuloan	6.7571	2
Casantaan	1.7166	5
Macalong east	0.8255	2
Sugcong	31.4150	59
Total	687.0862	953.00

COMPARATIVE AREA UTILIZATION OF SIGNIFICANT AGRICULTURAL ACTIVITIES, 2016

Activities	Year 2014		Year 2015		Year 2016	
	Area (ha)	%	Area (ha)	%	Area (ha)	%
Crop Production	5,056	99%	4,777.95	98.99	4,624	98.84
Livestock/Poultry	10	0.19	12	0.248	15	0.32
Fishing	34.73	0.68	36.73	0.762	38.73	0.82
TOTAL	5,101	100	4,826.68	100	4,678	100

LIST OF PUBLIC ELEMENTARY SCHOOLS

DISTRICT I		DISTRICT II	
School	Location	School	Location
Bactad Com. School	P.T. Orata	Anonas East ES	Anonas East
Bactad East ES	Bactad East	Anonas ES	Anonas West
Badipa ES	Dilan-Paurido	Cabuloan ES	Cabuloan
Bolaoen ES	Bolaoen	Calegu ES	Catablan
Cabaruan ES	Cabaruan	Camantiles ES	Camantiles
Camanang ES	Camanang	Catablan Integrated Sch.	Catablan
Casabula ES	Casantaan	Cayambanan ES	Catablan
Consolacion ES	Consolacion	Don Alipio Fernandez, Sr. IS	Pinmaludpod
Don Andres Maiquez Mem. School	Palina West	DAPSMECS - Main	San Vicente
Don Clemente Blanco Mem. ES	Sugcong	DAPSMECS - East	San Vicente
Don Valentin M. Ordonez Mem. Sch.	Palina East	DAPSMECS - West	San Vicente
Florentino B. Goce Com. School	Macalong	Don Felipe Maramba ES	Nancamaliran East
Nancayasan ES	Nancayasan	Labit East ES	Labit East
Oltama ES	Oltama	Labit West ES	Labit West
Palina East ES	Palina East	Lananpin ES	Pinmaludpod
Sta. Lucia ES	Sta. Lucia	Lazaga ES	Nancamaliran West
Tipuso ES	Tipuso	Manan ES	Mabanogbog
Urdaneta I Central Sch.	Poblacion	Nanbacuran ES	Catablan
Vicente Taaca Mem. Sch.	Sto. Domingo	Nancalobasaan ES	Nancalobasaan
		Nancalobasaan Riverside ES	Nancalobasaan
		Pinmaludpod ES	Pinmaludpod
		San Jose ES	San Jose
		San Jose Leet Int. Sch.	San Jose
		Tabuyoc ES	Cayambanan
		Trinidad Perez ES	Camantiles
		Tulong ES	Tulong

LIST OF PRIVATE ELEMENTARY SCHOOLS

School	Location	School	Location
Berean Academy of Urdaneta, Inc.	Nancayasan	Maranatha Christian Academy of Urdaneta, Inc.	Nancayasan
Bright Int'l. Special Sch. of Urdaneta, Inc.	San Vicente	MAV School of Multiple Intelligence, Inc.	Nancayasan
Divine Grace Montessori and HS	San Vicente	Merryland Montessori and High School, Inc.	San Vicente
Divine Word College of Urdaneta	Bayaoas	Messiah Christian Academy Inc.	Poblacion
Froebel Academy of Pang., Inc.	Cabuloan	Mother Goose Special School System, Inc.	Bayaoas
Holy Gem & Scepter Academy	San Vicente	Our Lady of the Lilies Academy	Poblacion
Int'l. Colleges for Excellence, Inc.	Poblacion	Panpacific University North Philippines	San Vicente
Luzon College of Science and Technology	Nancayasan	St. Andrew Montessori & High School, Inc.	Nancayasan
Lyceum Northern Luzon	San Vicente	St. Francis Urdaneta, Inc.	San Vicente
Lyceum-Northwestern University	Nancayasan	The Northwoods Academy of Urdaneta Inc.	Nancamaliran West

LIST OF PUBLIC JUNIOR HIGH SCHOOLS

School	Location	School	Location
Anonas NHS	Anonas	Don Alipio Fernandez, Sr. IS	Pinmaludpod
Bactad East NHS	Bactad East	Don Antonio Bongolan NHS (San Jose NHS0)	San Jose
Badipa NHS	Bayaoas	Don Mariano Q. Umipig NHS (Nancayasan NHS)	Nancayasan
Cabaruan NHS	Cabaruan	Labit National HS	Labit
Cabuloan NHS	Cabuloan	Lananpin NHS	Nancamaliran West
Camabu NHS	Camanang	Nancalobasaan NHS	Nancalobasaan
Camantiles NHS	Camantiles	Palina East NHS	Palina East
Casabula NHS	Casantaan	Palina West NHS	Palina West
Catablan Integrated Sch.	Catablan	Pedro T. Orata NHS	P. T. Orata
Cayambanan NHS	Cayambanan	San Jose Leet IS	San Jose
		Urdaneta City NHS	San Vicente

LIST OF PRIVATE JUNIOR HIGH SCHOOLS

School	Location	School	Location
Bright Int'l. Spcl. Sch. of Urdaneta, Inc.	San Vicente	Messiah Christian Academy Inc.	Poblacion
Divine Grace Montessori and HS	San Vicente	Mother Goose Special Sch. System, Inc.	Bayaoas
Divine Word College of Urdaneta	Bayaoas	Our Lady of the Lilies Academy	Poblacion
Int'l. Colleges for Excellence, Inc.	Poblacion	Panpacific University North Philippines	San Vicente
Lyceum Northern Luzon	San Vicente	St. Andrew Montessori & HS, Inc.	Nancayasan
Lyceum-Northwestern University	Nancayasan	St. Francis Urdaneta, Inc.	San Vicente
Merryland Montessori and HS, Inc.	San Vicente		

LIST OF PUBLIC SENIOR HIGH SCHOOLS

School	Location	School	Location
Anonas NHS	Anonas West	Don Mariano Q. Umipig NHS	Nancayasan
Cabaruan NHS	Cabaruan	Lananpin NHS	Pinmaludpod
Camabu NHS	Camanang	Nancalobasaan NHS	Nancalobasaan
Camantiles NHS	Camantiles	Pedro. T. Orata NHS	P.T. Orata
Catablan IS	Catablan	San Jose Leet IS	San Jose
Don Alipio Fernandez, Sr. IS	Pinmaludpod	Urdaneta City NHS	San Vicente

LIST OF PRIVATE SENIOR HIGH SCHOOLS

School	Location	School	Location
Our Lady of the Lilies Academy	Poblacion	Lyceum Northern Luzon	San Vicente
Merryland Montessori and HS, Inc.	San Vicente	Lyceum-Northwestern University	Nancayasan
Panpacific University North Philippines	San Vicente	Luzon College of Science & Technology, Inc.	Nancayasan
Int'l. Colleges for Excellence, Inc.	Poblacion	Mother Goose Special Sch. System, Inc.	Bayaoas
St. Andrew Montessori & HS, Inc.	Nancayasan	Bright Int'l. Spcl. Sch. of Urdaneta, Inc.	San Vicente
Asian Institute of E-Commerce (AIE)	Poblacion	Divine Grace Montessori and HS	San Vicente
Divine Word College of Urdaneta	Bayaoas	ABE International College of Business and Accountancy	San Vicente
Phinma-Upang College Urdaneta	Nancayasan		

PUBLIC ELEMENTARY ENROLMENT,
CLASSROOMS, AND TEACHERS

Name of Schools	Total Enrolment			No. of Classroom	No. of Teacher	Teacher/Student Ratio	Classroom/Student Ratio
	Male	Female	Total				
Anonas East ES	150	151	301	9	10	30.10	33.44
Anonas ES	202	175	377	20	12	31.42	18.85
Bactad Com. School	135	111	246	15	7	35.14	16.40
Bactad East ES	128	126	254	13	7	36.29	19.54
Badipa ES	917	820	1737	40	47	36.96	43.43
Bolaoen ES	118	79	197	10	7	28.14	19.70
Cabaruan ES	215	188	403	16	13	31.00	25.19
Cabuloan ES	225	212	437	16	15	29.13	27.31
Calegu ES	130	113	243	14	7	34.71	17.36
Camanang ES	211	203	414	15	13	31.85	27.60
Camantiles ES	306	313	619	32	17	36.41	19.34
Casabula ES	109	94	203	11	7	29.00	18.45
Catablan Integrated Sch.	215	227	442	18	13	34.00	24.56
Cayambanan ES	333	266	599	20	15	39.93	29.95
Consolacion ES	97	71	168	9	6	28.00	18.67
Don Alipio Fernandez, Sr. IS	199	179	378	14	12	31.50	27.00
DAPSMECS – Main	418	392	810	33	22	36.82	24.55
DAPSMECS - East	106	78	184	9	7	26.29	20.44
DAPSMECS - West	135	104	239	9	8	29.88	26.56
Don Andres Maiquez Mem. School	224	197	421	16	13	32.38	26.31
Don Clemente Blanco Mem. ES	64	67	131	9	7	18.71	14.56
Don Felipe Maramba ES	194	184	378	16	13	29.08	23.63
Don Valentin M. Ordonez Mem. Sch.	73	62	135	8	8	16.88	16.88
Florentino B. Goce Com. School	110	99	209	11	7	29.86	19.00
Labit East ES	251	218	469	16	14	33.50	29.31
Labit West ES	165	158	323	14	10	32.30	23.07
Lananpin ES	573	453	1026	32	29	35.38	32.06
Lazaga ES	77	61	138	9	6	23.00	15.33
Manan ES	225	150	375	18	10	37.50	20.83
Nanbacuran ES	101	75	176	8	7	25.14	22.00
Nancalobasaan ES	194	174	368	14	13	28.31	26.29
Nancalobasaan Riverside ES	76	52	128	11	7	18.29	11.64
Nancayasan ES	349	325	674	28	19	35.47	24.07
Oltama ES	102	64	166	10	6	27.67	16.60
Palina East ES	343	273	616	22	16	38.50	28.00
Pinmaludpod ES	124	100	224	9	7	32.00	24.89
San Jose ES	288	232	520	23	15	34.67	22.61
San Jose Leet Int. Sch.	173	158	331	13	9	36.78	25.46
Sta. Lucia ES	186	169	355	12	11	32.27	29.58
Tabuyoc ES	45	24	69	8	4	17.25	8.63
Tipuso ES	127	109	236	14	7	33.71	16.86
Trinidad Perez ES	49	49	98	5	5	19.60	19.60
Tulong ES	107	74	181	10	7	25.86	18.10
Urdaneta I Central Sch.	1825	1864	3689	88	106	34.80	41.92
Vicente Taaca Mem. Sch.	117	119	236	14	8	29.50	16.86
TOTAL	4,637	4,166	19,923	761	609	30.55	22.94

PUBLIC JUNIOR HIGH SCHOOL ENROLMENT,
CLASSROOMS, AND TEACHERS

School	Total Enrolment			No. of Classroom	No. of Teacher	Teacher/Student Ratio	Classroom/Student Ratio
	Male	Female	Total				
Anonas NHS	209	174	383	24	15	25.53	15.96
Bactad East NHS	73	55	128	10	11	11.64	12.80
Badipa NHS	387	387	774	26	31	24.97	29.77
Cabaruan NHS	230	181	411	21	16	25.69	19.57
Cabuloan NHS	177	134	311	12	13	23.92	25.92
Camabu NHS	123	117	240	15	14	17.14	16.00
Camantiles NHS	214	203	417	16	16	26.06	26.06
Casabula NHS	50	58	108	9	8	13.50	12.00
Catablan Integrated Sch.	174	123	297	13	12	24.75	22.85
Cayambanan NHS	180	158	338	13	13	26.00	26.00
Don Alipio Fernandez, Sr. IS	88	71	159	18	7	22.71	8.83
Don Antonio Bongolan NHS	233	186	419	13	18	23.28	32.23
Don Mariano Q. Umipig NHS	152	148	300	10	12	25.00	30.00
Labit National HS	199	131	330	17	14	23.57	19.41
Lananpin NHS	378	364	743	14	24	30.96	53.07
Nancalobasaan NHS	159	144	303	19	13	23.31	15.95
Palina East NHS	353	286	639	11	25	25.56	58.09
Palina West NHS	143	121	264	22	13	20.31	12.00
Pedro T. Orata NHS	136	133	269	133	13	20.69	2.02
San Jose Leet IS	106	78	184	8	6	30.67	23.00
Urdaneta City NHS	1674	1953	3627	4	138	26.28	906.75
TOTAL	5439	5205	10644	428	432	23.41	65.16

LIST OF PRIVATE ELEMENTARY SCHOOLS AND NUMBER OF ENROLMENT,
CLASSROOMS, AND TEACHERS

Name of Schools	Total Enrolment			No. of Classroom	No. of Teacher	Teacher/Student Ratio	Classroom/Student Ratio
	Male	Female	Total				
Berean Academy of Urdaneta, Inc.	53	26	79	1	7	11.29	79.00
Bright Int'l. Special Sch. of Urdaneta, Inc.	53	40	93	7	14	6.64	13.29
Divine Grace Montessori and HS	70	64	134	7	8	16.75	19.14
Divine Word College of Urdaneta	118	105	223	7	9	24.78	31.86
Froebel Academy of Pang., Inc.	8	8	16	5	6	2.69	3.20
Holy Gem & Scepter Academy	20	13	33	7	7	4.71	4.71
Int'l. Colleges for Excellence, Inc.	106	103	209	8	13	16.08	26.13
Luzon College of Science and Technology	12	7	19	5	5	3.80	3.80
Lyceum Northern Luzon	18	10	28	7	12	2.33	4.00
Lyceum-Northwestern University	42	39	81	7	7	11.57	11.57
Maranatha Christian Academy of Urdaneta, Inc.	77	63	140	8	11	12.73	17.50
MAV School of Multiple Intelligence, Inc.	23	9	32	12	12	2.67	2.67
Merryland Montessori and High School, Inc.	163	163	326	13	22	14.82	25.08
Messiah Christian Academy Inc.	58	37	95	7	8	11.88	13.57
Mother Goose Special School System, Inc.	126	131	257	5	18	14.28	51.40
Our Lady of the Lilies Academy	98	107	205	7	7	29.29	29.29
Panpacific University North Philippines	36	41	77	7	10	7.70	11.00
St. Andrew Montessori & High School, Inc.	19	17	36	7	11	3.27	5.14
St. Francis Urdaneta, Inc.	2	5	7	4	5	1.40	1.75
The Northwoods Academy of Urdaneta Inc.	16	10	26	7	4	6.50	3.71
TOTAL	1118	998	2116	138	196	10.26	17.89

LIST OF PRIVATE JUNIOR HIGH SCHOOLS AND NUMBER OF ENROLMENT,
TEACHERS, CLASSROOMS, TEACHERS/CLASSROOM RATIOS BY SY 2015-2016

Name of Schools	Total Enrolment			No. of Classroom	No. of Teacher	Teacher/Student Ratio	Classroom/Student Ratio
	Male	Female	Total				
Bright Int'l. Spcl. Sch. of Urdaneta, Inc.	23	12	35	4	7	5.00	8.75
Divine Grace Montessori and HS	39	29	68	4	4	17.00	17.00
Divine Word College of Urdaneta	248	258	506	14	38	13.32	36.14
Int'l. Colleges for Excellence, Inc.	78	85	163	11	32	5.09	14.82
Lyceum Northern Luzon	21	10	31	4	14	2.21	7.75
Lyceum-Northwestern University	80	89	169	9	13	13.00	18.78
Merryland Montessori and HS, Inc.	108	103	211	8	15	14.07	26.38
Messiah Christian Academy Inc.	13	5	18	5	4	4.50	3.60
Mother Goose Special Sch. System, Inc.	55	43	98	10	20	4.90	9.80
Our Lady of the Lilies Academy	104	95	199	8	22	9.05	24.88
Panpacific University North Philippines	56	68	124	6	15	8.27	20.67
St. Andrew Montessori & HS, Inc.	10	6	16	4	17	0.94	4.00
St. Francis Urdaneta, Inc.	3	1	4	2	2	2.00	2.00
TOTAL	838	804	1642	89	203	7.64	14.97

PERFORMANCE INDICATORS SY 2015-2016

Indicators			
Enrolment Rate		Completion Rate	
Kindergarten	111.79		
Elementary	104.69	Elementary	86.05
Secondary	94.7	Secondary	88.74

HISTORICAL NUMBER OF POPULATION SERVED BY
TYPE OF CLIENTELE SYSTEM

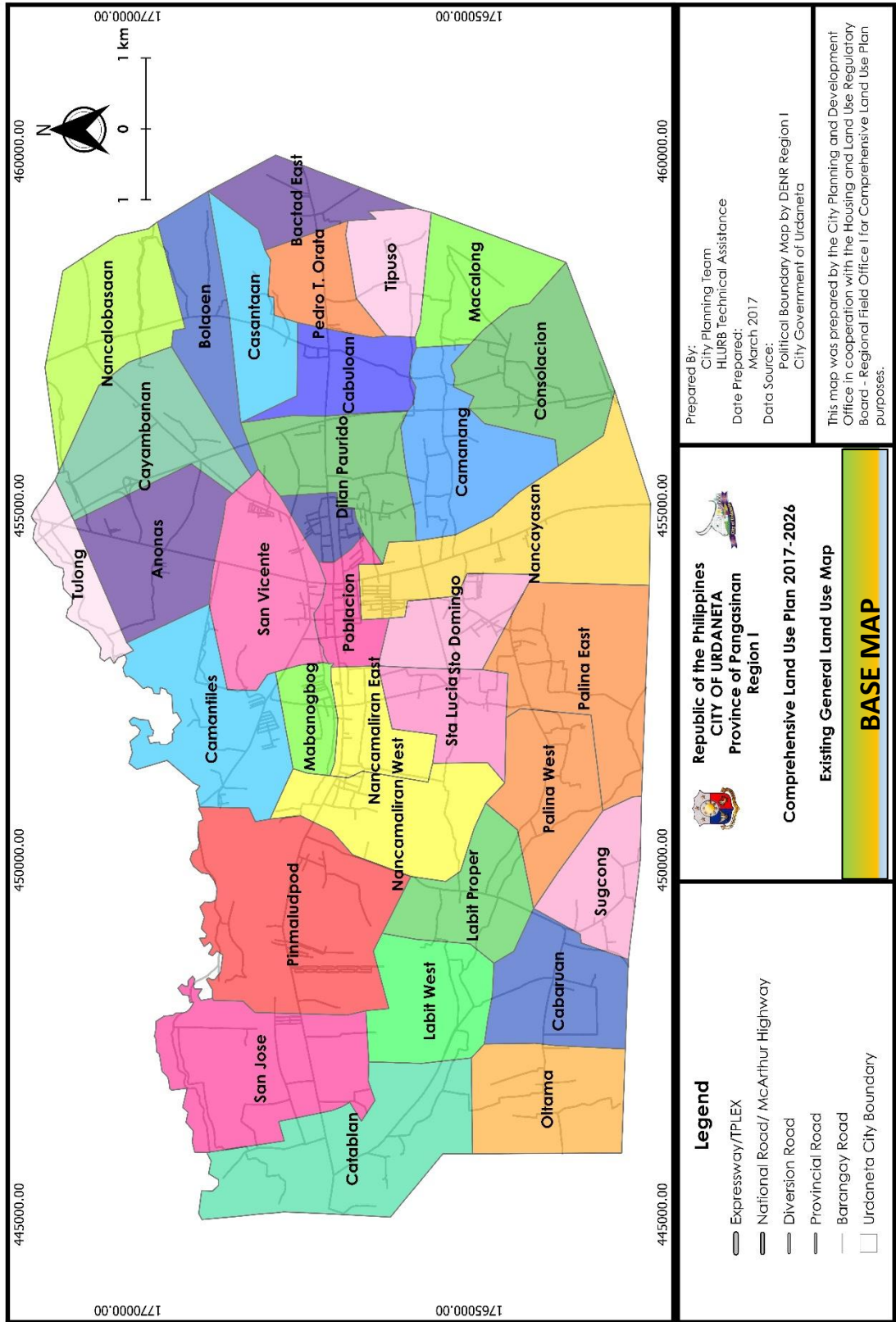
Type of Clientele	Previous Year			Current/Last Year	
	2014	2015	2016	No.	Percentage
Women in especially difficult circumstances	21	8	12	41	0.06
Children in need of special protection	79	71	66	216	0.35
3-4 yrs old children in need of ECCD services	2,185	2,257	2,387	6,829	11.18
Persons with Disabilities	494	1,219	684	2,397	3.92
Senior Citizens	6,204	6,913	8,653	16,770	27.47
Solo Parents	700	717	48	1,465	2.4
Distressed individuals	2,140	24,545	2,648	29,333	48.06
Pantawid Pamilyang Pilipino Program	3,985	3,985	3,981 (4 HH transferred residence)	3,981	6.52
TOTAL	15,808	39,715	18,479	61,032	

SERVED CLIENTELES FROM VARIOUS SECTOR

Clientele Sector	2014	% (131,336 population)	2015	% (132,780 population)	2016	% (134,240 Population)
Family	7,026	5.3	13,347	10.05	12,620	9.40
Women	1,396	1.06	1,448	1.09	687	0.51
Children	2,604	2	7,169	5.39	5,105	3.80
Youth	454	0.34	218	0.16	223	0.16
Persons with Disabilities	494	0.37	1,219	0.91	684	0.50
Senior Citizens	6,204	4.7	6,913	5.20	8,653	6.44
Distressed families/individuals	2,140	1.62	24,545	18.48	2,648	1.97
T O T A L	20,325	15.47 %	54,859	41.31%	30,620	22.80%

CRIME STATISTICS

Nature of Crime		January – December 2016		
		No. of Crimes	Cleared	Solved
INDEX CRIMES	Crime Against Person	82	50	41
	Murder	26	10	8
	Homicide	1	1	1
	Physical Injury/ies	27	21	20
	Frustrated Murder	9	7	6
	Attempted Murder	2	1	1
	Frustrated Homicide	3	2	2
	Attempted Homicide	2	2	2
	Frustrated Parricide	0	0	0
	Plain Physical Injury	11	9	9
	Rape	28	18	12
	Crime Against Property	50	20	18
	Robbery	8	2	2
	Theft	31	17	15
	Carnapping of MV	2	1	1
	Carnapping of MC	9	0	0
	Cattle Rustling	0	0	0
NON-INDEX CRIMES	Other Crimes	64	46	34
	Threat	10	6	5
	Alarm and Scandal	1	1	1
	Trespassing	2	2	2
	Estafa	5	2	1
	Unjust Vexation	4	4	2
	Malicious Mischief	2	0	0
	Oral Defamation	6	5	2
	Acts of Lasciviousness	12	11	7
	Others	22	15	14
	Veicular/ Traffic Accident	239	223	212
	RIR in Homicide	17	14	13
	RIR in Phy. Injuries	64	61	57
	RIR in Damaged of Property	158	148	142
	Special Laws	362	329	278
	Comprehensive Dangerous Drug	71	70	68
	Illegal Poss'n of FA)RA 8294)	8	8	8
	VAWC (RA 9262)	198	180	151
	Child Abuse (RA 7610)	81	67	50
	Anti-Trafficking in Person	1	1	0
Other Special Laws Violation	1	1	0	
INDEX CRIME	132	70	59	
NON-INDEX CRIME	665	598	524	
TOTAL CRIME VOLUME	797	668	583	
AVERAGE MONTHLY CRIME RATE		460.7%		
CCE		83.81%		
CSE		73.15%		



Prepared By:
City Planning Team
HLURB Technical Assistance

Date Prepared:
March 2017

Data Source:
Political Boundary Map by DENR Region I
City Government of Urdaneta

This map was prepared by the City Planning and Development Office in cooperation with the Housing and Land Use Regulatory Board - Regional Field Office I for Comprehensive Land Use Plan purposes.

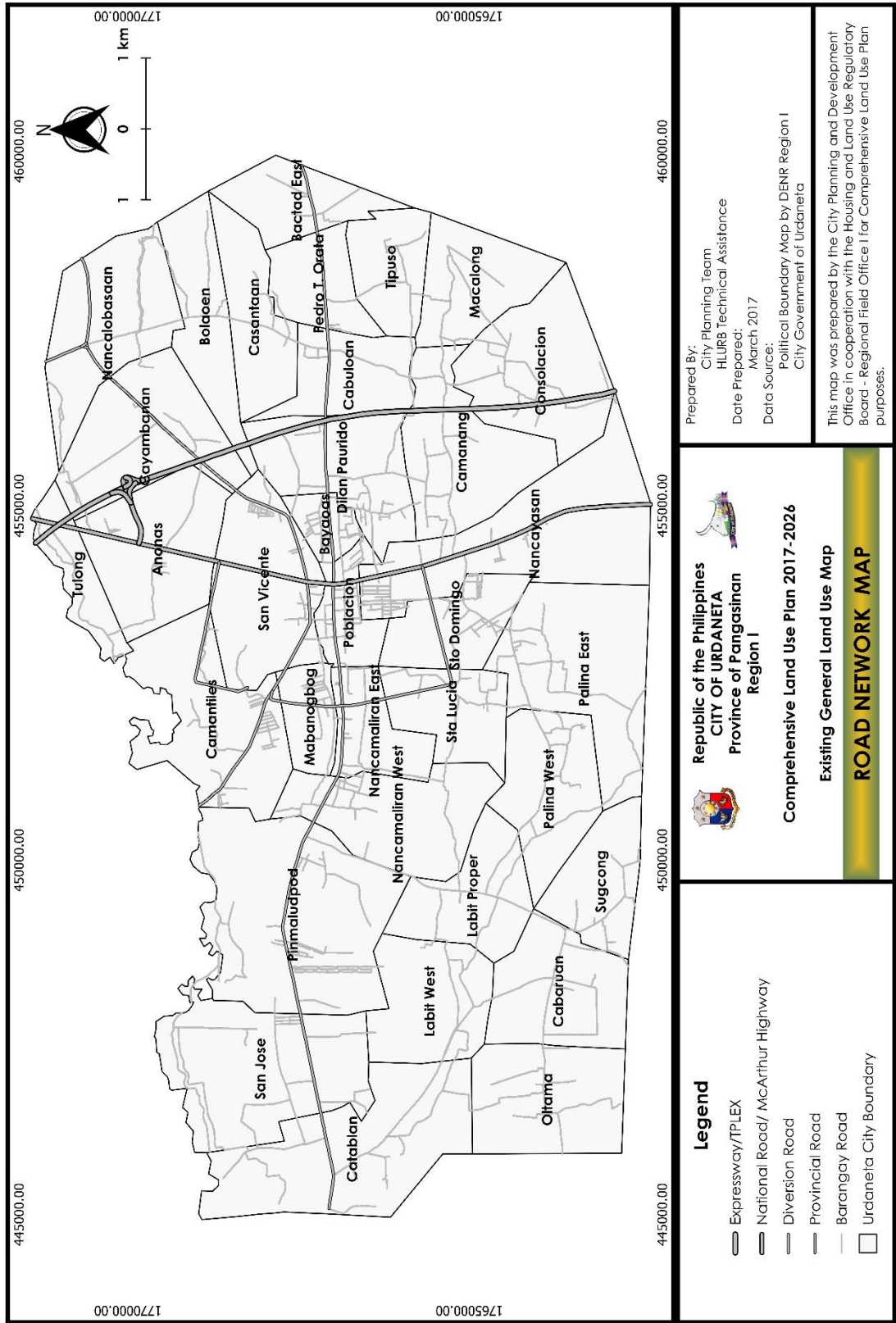
Republic of the Philippines
CITY OF URDANETA
Province of Pangasinan
Region I

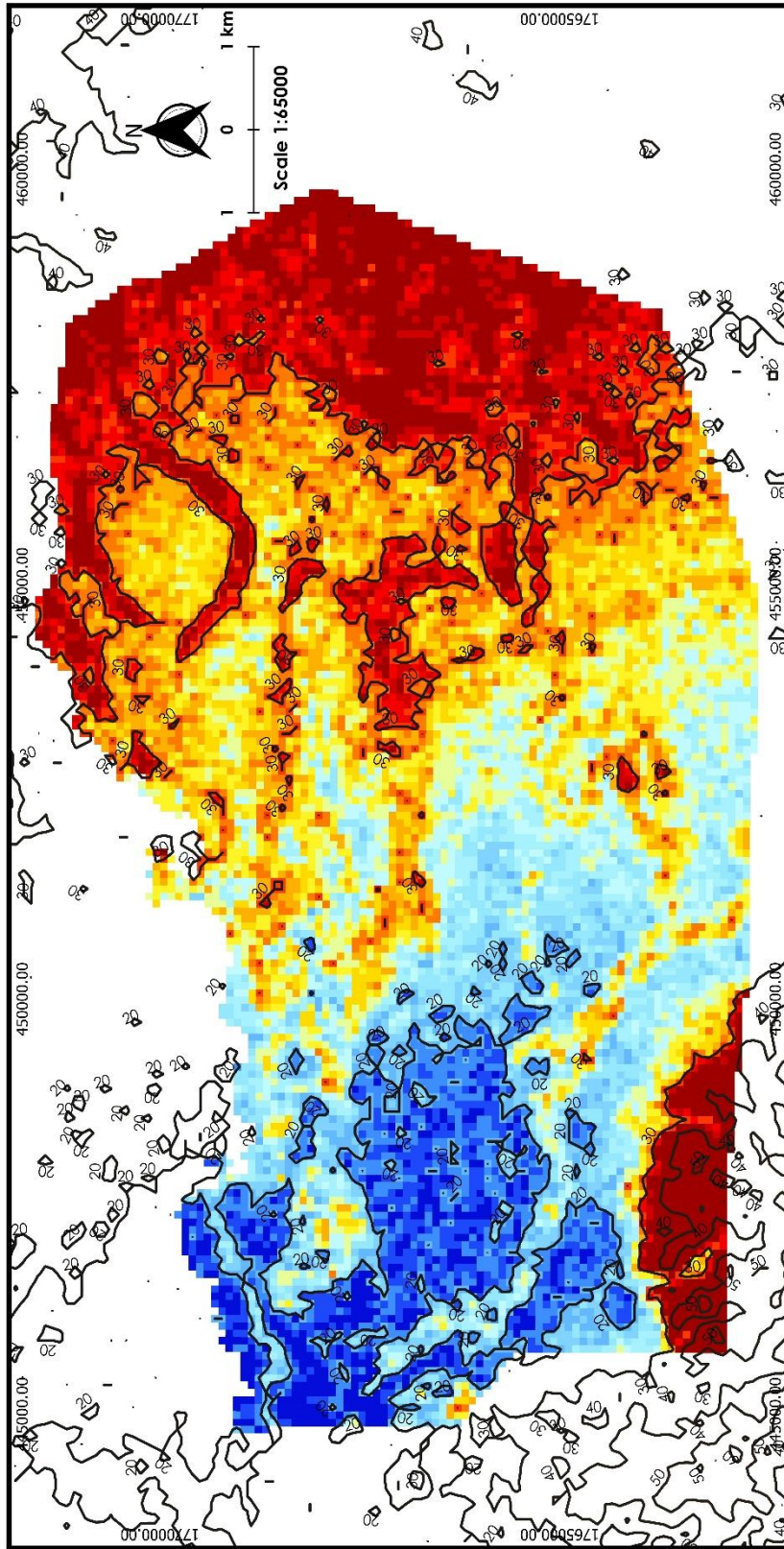
Comprehensive Land Use Plan 2017-2026
Existing General Land Use Map

BASE MAP

Legend

- Expressway/TPLEX
- National Road/ McArthur Highway
- Diversion Road
- Provincial Road
- Barangay Road
- Urdaneta City Boundary





Prepared By:
City Planning Team
HLURB Technical Assistance

Date Prepared:
March 2017

Data Source:
Political Boundary Map by DENR Region I
City Government of Urdaneta

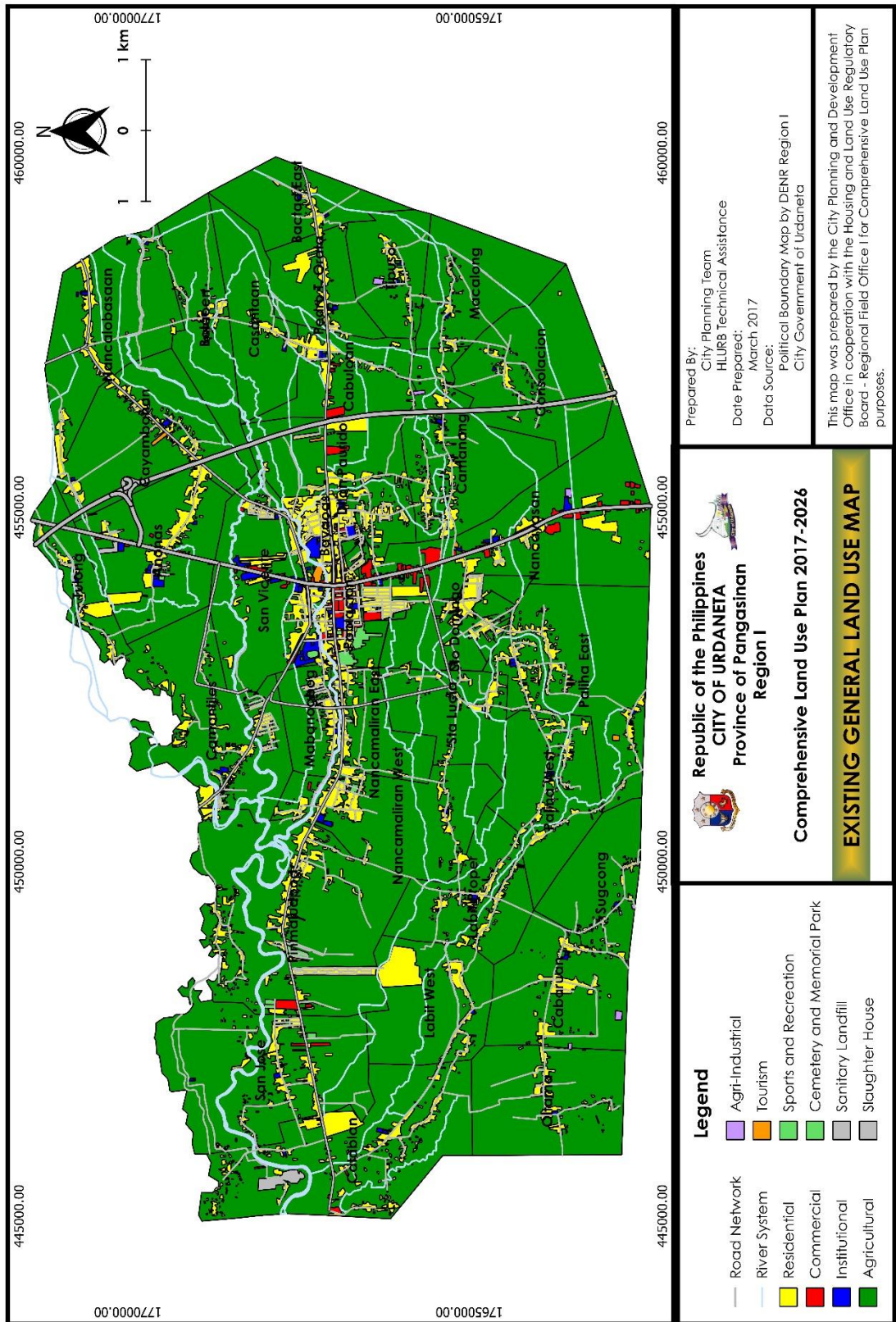
This map was prepared by the City Planning and Development Office in cooperation with the Housing and Land Use Regulatory Board - Regional Field Office I for Comprehensive Land Use Plan purposes.

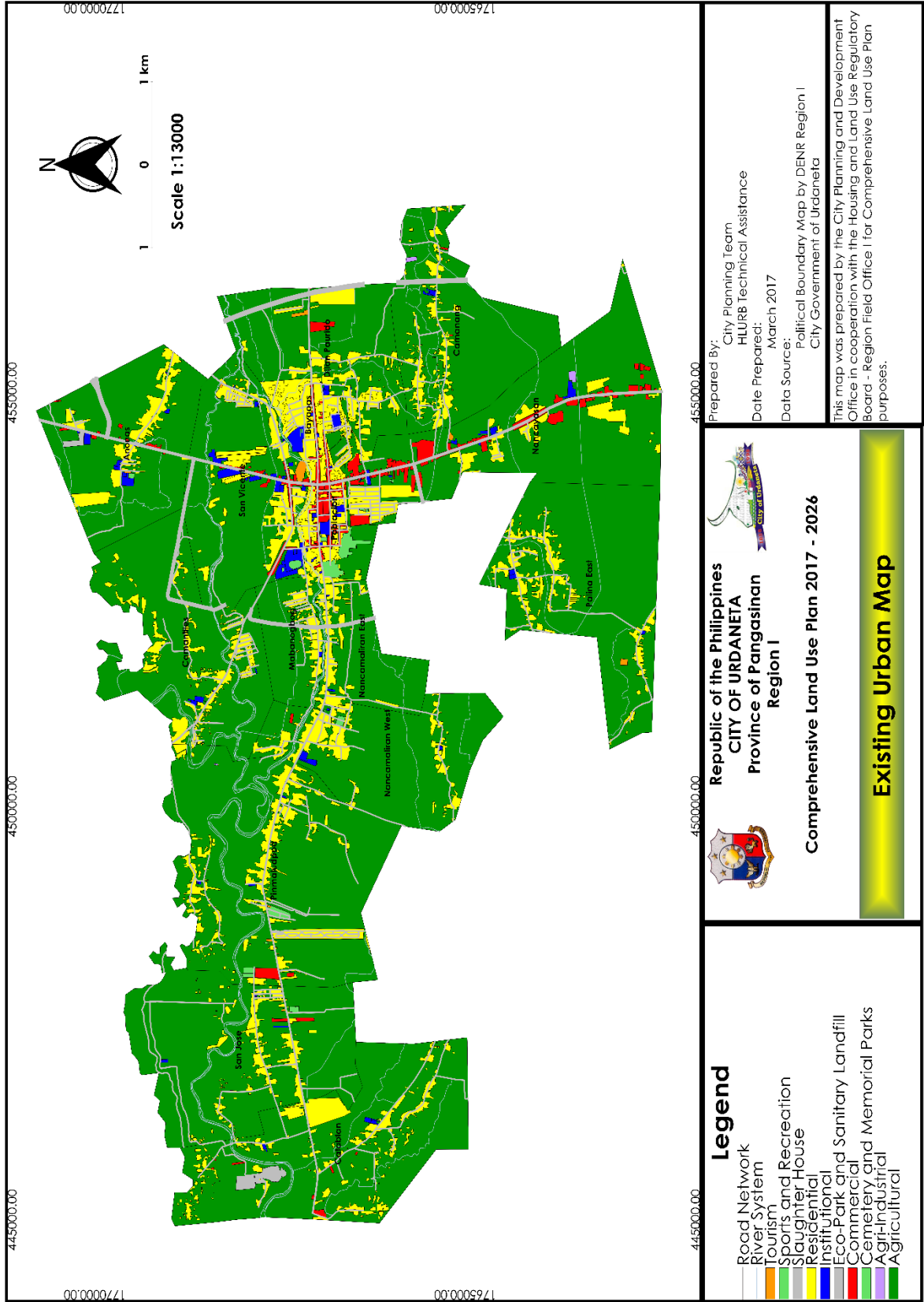

 Republic of the Philippines
CITY OF URDANETA
 Province of Pangasinan
 Region I


 Comprehensive Land Use Plan 2017-2026
 Physical and Natural Environment

TOPOGRAPHIC MAP

Elevation	Contour
17	-50
18.1	-60
19.1	-70
20.2	-80
21.2	-90
22.3	-100
23.4	-10
24.4	0
25.5	10
26.6	20
27.6	30
28.7	40
29.8	
30.8	
31.9	
32.9	
34	





2016 PROPOSED PROJECTS



Project	Location	Amount
1 Installation of Street Lights within Poblacion	Poblacion	2,000,000.00
2 Establishment of Urdaneta City Cemetery II (lot acquisition/site development)	Poblacion	2,000,000.00
3 Additional Funding for the Improvement of the Urdaneta City Cemetery	Poblacion	1,000,000.00
4 Additional Funding for the Improvement of the Cultural and Convention Center/Balikbayan Hall	Poblacion	1,000,000.00
5 Purchase of Dump Truck (BuB counterpart)	Urdaneta City	1,200,000.00
6 Construction of Evacuation Center (BuB counterpart)	Urdaneta City District X	800,000.00
7 Rehabilitation of RHU II Center (BuB counterpart)	Urdaneta City	800,000.00
8 Improvement of Drainage System	Poblacion	2,000,000.00
9 Concreting of Purok 4 Road	Anonas	300,000.00
10 Construction of Day Care Center	Labit West	800,000.00
11 Construction of R.C. Pipe Culvert at BLISS	Nancamaliran West	200,000.00
12 Riprapping of Road at Calle Pogi	Pinmaludpod	200,000.00
13 Construction of Box-Type Culvert at Sitio Isla	Pinmaludpod	200,000.00
14 Improvement of Multi-Purpose Hall	P.T. Orata	200,000.00
15 Loan Amortization of the Urdaneta City Engineered Landfill	Urdaneta City	32,000,000.00
16 Loan Amortization of New Public Market	Urdaneta City	20,000,000.00
17 Concreting of Farm-to-Market Road at Sitio Burubor	Anonas	400,000.00
18 Concreting of Farm-to-Market Road at Zone 7	Bactad East	300,000.00
19 Construction/Repair of Health Center	Bactad East	100,000.00
20 Construction of Drainage System along Provincial Road	Bayaoas	400,000.00
21 Concreting of Farm-to-Market Road at Zone 3	Bolaoen	400,000.00
22 Construction of Drainage System at Zone 1-7	Cabaruan	400,000.00
23 Additional Materials for the Construction of Multi-Purpose Hall	Cabuloan	400,000.00
24 Asphalt overlay/Patching at Riverside Zone 5/7	Camanang	400,000.00
25 Concreting of Farm-to-Market Road at Zone 4	Camantiles	300,000.00
26 Installation of Streetlights at Zone 7	Camantiles	100,000.00
27 Purchase of Lot	Casantaan	400,000.00
28 Concreting of Farm-to-Market Road at Zone 5	Catablan	400,000.00
29 Concreting of Farm-to-Market Road at Sitio Tabuyoc, Zone 7	Cayambanan	400,000.00
30 Concreting of Farm-to-Market Road at Zone 2	Consolacion	200,000.00
31 Riprap of Drainage Canal at Zone 4	Consolacion	200,000.00
32 Concreting of Farm-to-Market Road at Zone 2	Dilan-Paurido	400,000.00
33 Concreting of Farm-to-Market Road at Zone 7	Labit Proper	400,000.00
34 Concreting of Farm-to-Market Road at Zone 4	Labit West	400,000.00

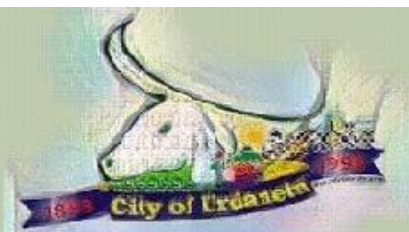
35	Concreting of Farm-to-Market Road at Purok 2	Mabanogbog	200,000.00
36	Installation of Streetlights at Purok 2	Mabanogbog	200,000.00
37	Concreting of Farm-to-Market Road at Zone 2 - 3	Macalong	250,000.00
38	Installation / Repair of Streetlights at Zone 1 - 6	Macalong	150,000.00
39	Rehabilitation of Farm-to-Market Road at Purok 7	Nancalobasaan	400,000.00
40	Concreting of Farm-to-Market Road at Zone 4	Nancamaliran East	300,000.00
41	Installation of Streetlights at Zone 1-7	Nancamaliran East	50,000.00
42	Continuation/Additional Materials for the Construction of Multi-Purpose Hall (Day Care Center)	Nancamaliran East	50,000.00
43	Concreting of Farm-to-Market Road at Zone 7	Nancamaliran West	200,000.00
44	Construction of Drainage System at Zone 6	Nancamaliran West	200,000.00
45	Construction of Multi-Purpose Hall (Senior Citizen Building)	Nancaysan	400,000.00
46	Concreting of Farm-to-Market Road at Zone 2	Oltama	400,000.00
47	Concreting of Farm-to-Market Road at Kalye Salbot	Palina East	400,000.00
48	Concreting of Farm-to-Market Road at Zone 1-2	Palina West	400,000.00
49	Construction of Multi-Purpose Shed at Zone 3	P.T. Orata	150,000.00
50	Construction of Drainage Canal System with Cover at Zone 1-3	P.T. Orata	250,000.00
51	Installation of Streetlights from Zone 1 to Zone 7	Pinmaludpod	400,000.00
52	Concreting/Rehabilitation of Road at Lachica St. going to Memorial Park	Poblacion	150,000.00
53	Installation of Streetlights and Street signs within Poblacion	Poblacion	250,000.00
54	Installation of Streetlights at San Jose Leet and Zone 4	San Jose	400,000.00
55	Concreting of Farm-to-Market Road at Mitura Road	San Vicente	400,000.00
56	Construction of Drainage System at Purok 4	Sta. Lucia	200,000.00
57	Riprap/Concreting of Farm-to-Market Road going to Purok 6	Sta. Lucia	200,000.00
58	Construction of Drainage System at Zone 2	Sto. Domingo	200,000.00
59	Additional Materials for the Construction of Multi-Purpose Hall (Day Care Center)	Sto. Domingo	200,000.00
60	Concreting of Farm-to-Market Road at Zone 1 and 6	Sugcong	400,000.00
61	Concreting of Farm-to-Market Road at Zone 7	Tipuso	400,000.00
62	Construction of Drainage System at Zone 4-5	Tulong	400,000.00

URDANETA CITY BARANGAY CAPTAINS



Anonas	Diomedes Q. Marquez
Bactad East	Lourdes O. Claveria
Bayaoas	Felixberto V. De Guzman
Bolaoen	Cesar M. Lucena
Cabaruan	Lorenzo D. Manzano
Cabuloan	Marcelino V. Bustamante
Camanang	Lucio B. Ander
Camantiles	Elmer F. Ganceña
Casantaan	Daniel V. Castañeto
Catablan	Fernando A. Almendares
Cayambanan	Norberto C. Gotgotao
Consolacion	Arnel S. Antiniw
Dilan-Paurido	Mariano L. Locquiao
Labit Proper	Godofredo F. Dulay
Labit West	Eduardo A. Almendares
Mabanogbog	Arsenio L. Elegado, Sr.
Macalong	Jose L. Llego
Nancalobasaan	Wilma B. Segundo
Nancamaliran East	Eulogio B. Acosta, Jr.
Nancamaliran West	Amado O. Veridiano
Nancayasan	Marino R. Rondaris
Oltama	Fidel E. Lagundi, Jr.
Palina East	Hariceto P. Pavo
Palina West	Jaime Q. Aboc
Pedro T. Orata	Neil G. Tablada
Pinmaludpod	Milagros B. Seto Ma
Poblacion	Cheryl M. Del Prado
San Jose	Bartolome S. Palagud, Jr.
San Vicente	Michael Brian M. Perez
Sta. Lucia	Eduardo M. Lalata
Sto. Domingo	Danilo T. Bajesta
Sugcong	Virgilio C. Magno
Tiposu	Dionisio E. Mansat, Jr.
Tulong	Raul M. Figuracion

URDANETA CITY DEPARTMENT HEADS AND CHIEF OFFICES



City Administrator	RUFINO RONALDO Z. SAN JUAN VI
City Accountant	BENEDICTO P. SISON
City Agriculturist	BONIFACIO T. PARIÑAS
City Assessor	MARY JOYCE S. SARDEÑA
City Budget Officer	CYRYL MARIE M. RAMOS
City Civil Registrar	MARFIE S. LUSTINA
City Engineer	MACARIO A. SEGUNDO, JR.
City Legal Officer	DIONISIO C. ANTINIW
City Health Officer	BERNARDO C. MACARAEG
City Planning & Dev't Coordinator	NESTOR A. IBAY
City Social Welfare & Dev't Officer	VILMA L. LAPITAN
City Treasurer	SANIATA A. ELEGORES
BPLO Chief	ANTONIO A. VELICARIA, JR.
HRMO Chief	SAMUEL B. ZARATE, JR.
POSO Chief	HENRY R. KANG
Secretary to the Sanggunian	RUFINO RAMIL Z. SAN JUAN V
Environmental Services Div. Chief	REYNALDO P. QUINTO
Market Supervisor	CESAR T. ESTOESTA
Slaughter House Master	MAURICIO V. MANIBOG
Supply Officer	EDUARDO T. FERNANDEZ
Livelihood Training Center Head	OMAR JOSEPH A. ESTEVES
City Auditor	MANUELA S. TAMONDONG
City Director – DILG	MELINDA M. BUADA
City Elections Officer	MIGUEL G. BAUTISTA, JR.
City Librarian	BERNADINE M. GRAVELA
Chief of Police	Supt. MARCELIANO A. DESAMITO JR
Female Dorm Jail Warden	C/Insp. NORRY S. UBAÑA
District Jail Warden	C/Insp. WILLIAM T. MANENGYAO
Fire Marshall	Chief ARTURO L. SAWATE

DIRECTORY OF NATIONAL GOVERNMENT AGENCIES



Urdaneta City Fire Station

CHIEF INSP. ARTHUR L. SAWATE

Fire Marshall

Urdaneta City Fire Station

Tel. No. (075) 568-6053

Hotline 160

Urdaneta City Police Station

P/SUPT. MACELIANO A. DESAMITO JR.

Chief of Police

Tel. No. (075) 529-2076

Hotline166

Urdaneta City Water District

ATTY. EFREN B. DOMAGAS

General Manager

UCWD Building

Nancayasan, Urdaneta City

Tel. No. (075) 656-1044

Don. Amadeo J. Perez Sr. Mem. Gen. Hospital

DR. MARIA VIVIAN VILLAR-ESPINO

Director

Dilan-Paurido, Urdaneta City

Tel. No. (075) 568-3874

Bureau of Jail Management and Penology

C/INSP. ROQUE C. SISON III

District Jail Warden

BJMP District Jail

Anonas, Urdaneta City

Bureau of Jail Management and Penology

C/ INSP. NARCISA R. RAMIREZ

Female Dorm Jail Warden

BJMP District Jail

Anonas, Urdaneta City

Regional Trial Court

HON. ELIZABETH L. BERDAL

Executive Judge

Branch 47, Hall of Justice

Anonas, Urdaneta City

Municipal Trial Court in Cities

HON. IRMA B. PANAHON-ABAD

Presiding Judge

Old City Hall Compound

Poblacion, Urdaneta City

Office of the City Prosecutor

ATTY. SILVESTRE REDEMPTOR A. RIDAO

City Prosecutor

Hall of Justice

Anonas, Urdaneta City

Parole & Probation Administration

MS. SUSAN BONIEL

Officer-in-Charge

Anonas, Urdaneta City

Commission on Audit

MRS. MRS. MANUELA S. TAMONDONG

City Auditor

Commission on Audit

2/F South Wing, New City Hall

Anonas, Urdaneta City

Commission on Elections

MR. MIGUEL G. BAUTISTA

City Elections Officer

2/F UC Convention and Sports Center

Poblacion, Urdaneta City

Civil Service Commission

MR. ROGELIO T. DEL ROSARIO

Director II

UC Convention and Sports Center

Poblacion, Urdaneta City

Bureau of Internal Revenue

ATTY. MA. ISABEL B. UTIT

Revenue District Officer

Anonas, Urdaneta City

Department of Environment and Natural Resources

MR. FERNANDO B. ESTRADA JR.
Community Environment & Nat. Res. Officer
Anonas, Urdaneta City
Tel. No. (075) 568-106

Department of Energy

ENGR. ROMULO B. CALLANGAN JR.
OIC – Director
Luzon Field Office
2/F PSJ Building
Nancayasan, Urdaneta City
Tel. No. (075) 656-0114

Land Bank of the Philippines

MR. JOEL K. PEREDO
Branch Manager
Land Bank Building
Nancayasan, Urdaneta City
Tel. No. (075) 568-2388

Philippine Crop Insurance Corporation

MS. FLORENTINA O. PUGAL
Regional Manager
Land Bank Building
Nancayasan, Urdaneta City
Tel. No. (075) 568-2524/ 656-2524

Land Transportation Office

MR. GLORIOSO DANIEL Z. MARTINEZ
District Head
LTO Building
Poblacion, Urdaneta City

National Irrigation Administration

ENGR. JOHN N. CELESTE
Regional Director
Bayaoas, Urdaneta City
Tel. No. (075) 568-2177/ 568-2308

National Commission on Indigenous People

MR. BUGTONG EYDE A. CARANTES
Service Center Head
UC Convention and Sports Center

National Bureau of Investigation

MS. MERLINDA MARTINEZ
Officer –in- Charge
2F CB Mall, Nancayasan, Urdaneta City

Department of Agrarian Reform

MS. MARIA ANA B. FRANCISCO, CESO V
Provincial Agrarian Reform Officer II
Gacutan Building
Poblacion, Urdaneta City
Tel. No. (075) 656-0187

Department of the Interior and Local Governments

MRS. MELINDA M. BUADA
City Director
2/F South Wing, New City Hall
Anonas, Urdaneta City

Home Development and Mutual Fund

MS. MERIAM N. PAMITTAN
Branch Head
3F CB Mall
Nancayasan, Urdaneta City

Philippines Postal Corporation

MS. PATRICIA C. SORIANO
Postmaster
Post Office Building
Poblacion, Urdaneta City

Social Security System

MR. NARCISO M. MARTINEZ JR.
Branch Head
3F CB Mall
Nancayasan, Urdaneta City

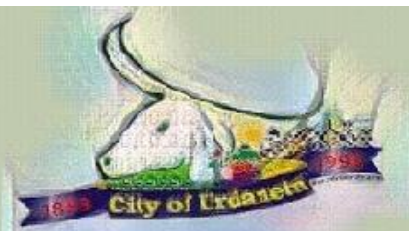
Pangasinan III Electric Cooperative

ENGR. ALLAN G. CASEM
OIC – General Manager
Nancayasan, Urdaneta City
Tel. No. (075) 568-2413

Philippine Charity Sweepstakes Office

MRS. EDITHA R. ROMERO
OIC- Branch Manager
New City Hall
Anonas, Urdaneta City

DIRECTORY OF NON- GOVERNMENT ORGANIZATIONS/ CIVIC GROUPS



Rotary Club of Urdaneta, Inc.

MR. JULIUS SORIANO

President

Rotary Club of Urdanta East

MR. RODNEY SISON

President

Rural Improvement Club

MRS. NIDA M. PEREZ

President

Agricultural Group for Economic Progress

MR. ROGELIO I. PADILLA

President

Federation of Senior Citizens' Associations

MRS. LAGRIMAS JACOB-ESTRADA

President

Association of Retired Teachers of Urdaneta

City

MS. FRANCISCA D. MONTEFALCO

President

Philippine Red Cross

MR. XERXES DELA PEÑA

Chapter Head

International Order of De Molay

BRO. ALEJANDRO M. INVEÑA

Master Councilor

Federation of Tricycle Operators and Drivers of Urdaneta

MR. BENEDICTO MILO

President

Bankers Association of Eastern Pangasinan

MR. LITO MOVIDA

President

Rotary Club of Urdaneta North

MR. EDUARDO GLOR

President

Rotary Club of Mid-City

MS. LIEZL TAGALICUD

President

Kalipunan ng Liping Pilipina

MRS. EUFROCINA A. EVANGELISTA

President

City Agricultural and Fisheries Council

MR. ROLLY SERAFICA

President

Urdaneta Ministers Fellowship

BISHOP JOSE JORGE A. BAÑARES

President

Federated PTAs of Urdaneta City

MR. PETER VILLANUEVA

President

DELTACOM – Urduja Base

MR. JOJO OLIVAR

President

Urdaneta Lodge No. 302 Free & Accepted Masons

WB GABRIEL ROSALES

Worshipful Master

D'Originals of Urdaneta

MR. ONOFRE C. GOROSPE

President

Urdaneta Filipino-Chinese Community

MR. PETER CHAN

President

Urdaneta Muslim Association, Inc.
DATU CAMALODIN SARIPADA
President

Samahang Batangueño
MR. NESTOR MANONGSONG
President

International Order of De Molay
BRO. ALEJANDRO M. INVENA
Master Councilor

Junior Chamber International
MR. RAYMOND S.J. TABELIN
President

Philippine Red Cross
MS. HONEYLETTE P. NOE
Chapter Head

REFERENCES/ DATA SOURCES



Social Sector

City Health Office

City General Services Office

City Schools Division of Urdaneta

City Social Welfare and Development Office

City Planning and Development Office

Economic Sector

City Agriculture Office

City Planning and Development Office

City Tourism Office

City Treasury Office

Business Permit & Licensing Office

Infrastructure Sector

City Planning and Development Office

Office of the City Engineer

Pangasinan Electric Company III

Urdaneta City Police Station

Urdaneta City Water District