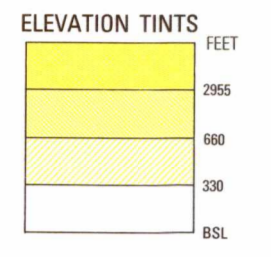


SERIES 1501 AIR SHEET NK 38-02 EDITION 4  
SERIES 1501 COMPANION SHEET IS EDITION 2

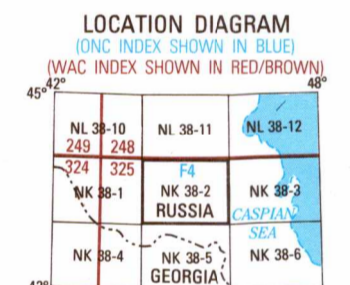


RELIABILITY OF THIS GRAPHIC  
As determined by standard practices

PLOTTING ACCURACY/ASSURANCE  
Horizontal: within 607 ft  
Vertical: within 19 ft  
Date of information: 1991

Horizontal Datum: World Geodetic System 1984  
Vertical Datum: Mean Sea Level  
Transverse Mercator Projection

GLOSSARY  
Dolina ..... valley  
Kanal ..... canal  
Khibet ..... mountain range  
Kray ..... first-order administrative division  
Opovnyy Punkt ..... passing siding  
Ostanovochnyy Punkt ..... stop  
Quay ..... wharf, pier  
Raz'ezd ..... passing siding  
Respublika ..... first-order administrative division  
Stantsiya ..... station



CONVERSION OF ELEVATIONS

FEET	METERS	FEET	METERS
1000	305	10000	3048
800	244	9000	2743
600	183	8000	2438
400	122	7000	2134
200	61	6000	1829
100	31	5000	1524
		4000	1219
		3000	914
		2000	610
		1500	457
		1000	305

GEOREF BASIC 15° QUADRANGLE  
44° 43' 42' 41' 40' 39' 38' 37' 36' 35' 34' 33' 32' 31' 30' 29' 28' 27' 26' 25' 24' 23' 22' 21' 20' 19' 18' 17' 16' 15' 14' 13' 12' 11' 10' 9' 8' 7' 6' 5' 4' 3' 2' 1'

CAUTION  
Vertical obstructions, including powerlines, have been indicated from the most reliable sources available. However, there is no assurance that all obstructions are shown, or that their locations or heights are exact.

CAUTION  
Vertical obstructions, including powerlines, have been indicated from the most reliable sources available. However, there is no assurance that all obstructions are shown, or that their locations or heights are exact.

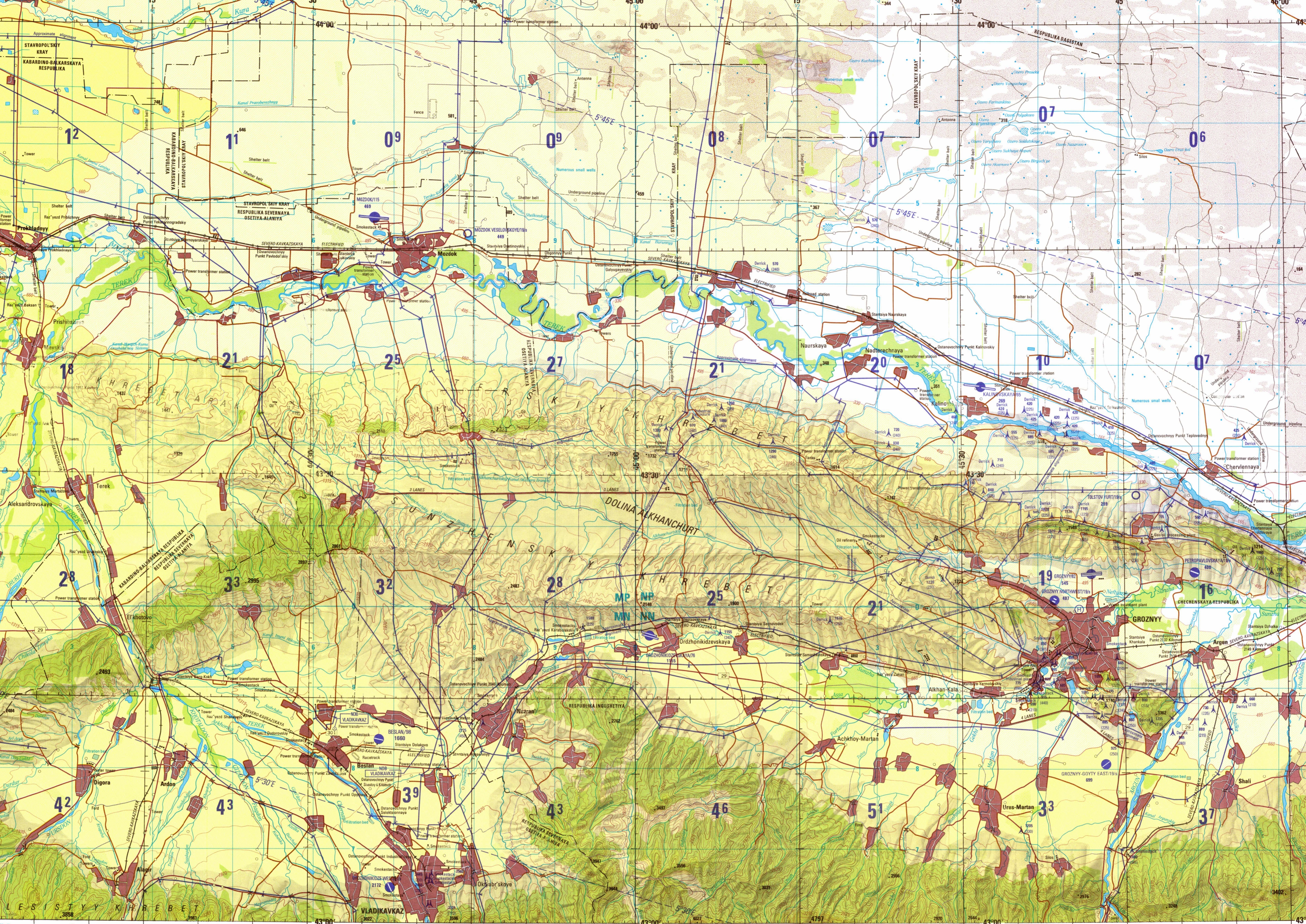
**ATTENTION**  
THIS CHART CONTAINS MAXIMUM ELEVATION FIGURES (MEF)

The Maximum Elevation Figures shown in quadrangles bounded by ticked lines of latitude and longitude are represented in THOUSANDS and HUNDREDS of feet above mean sea level. The MEF is based on information available concerning the highest known features in each quadrangle, including terrain and obstructions (trees, towers, antennas, etc.).

EXAMPLE: 12,000 feet. **125**

SCALE 1:250,000  
GROZNYI, RUSSIA

SERIES 1501 AIR SHEET NK 38-02 EDITION 4  
SERIES 1501 COMPANION SHEET IS EDITION 2



POPULATED PLACES

Over 100,000	MOSKVA
50,000 to 100,000	KUMERTAU
10,000 to 50,000	Okha
2,000 to 10,000	Kuva

ROADS

Dual highway	4 LANES DUAL
All weather, hard surface	3 LANES
More than two lanes wide	2 LANES
Two lanes wide	1 LANE
All weather, loose or light surface	3 LANES
More than two lanes wide	2 LANES
Two lanes wide	1 LANE
Fair or dry weather, loose surface	1 LANE
Track	1 LANE
Route marker	1 LANE

RAILROADS

Normal gauge 5' (1.52 m)	Single track
Narrow gauge 3' (0.91 m)	Multiple track

**JOINT OPERATIONS GRAPHIC (AIR)**

SCALE 1:250,000

5 10 15 20 25 30 35 40 45 50 55 60 65 70 75 80 85 90 95 100

5 10 15 20 25 30 35 40 45 50 55 60 65 70 75 80 85 90 95 100

CONTOUR INTERVAL APPROXIMATELY 165 FEET

USERS SHOULD REFER CORRECTIONS, ADDITIONS AND COMMENTS TO THE NIMA OPERATIONAL HELP DESK: 1-800-455-0899; COMMERCIAL 314-263-4884; DSN 693-4864; OR WRITE TO: DIRECTOR, NATIONAL IMAGERY AND MAPPING AGENCY, ATTN: ES, MAIL STOP L-88, 4600 SANGAMORE ROAD, BETHESDA, MD 20818-0003

©COPYRIGHT 1999 BY THE UNITED STATES GOVERNMENT  
NO COPYRIGHT CLAIMED UNDER TITLE 17 U.S.C.

OTHER FEATURES

Landmark	.....
Tank	.....
Levee	.....
Mine	.....
Bridge, Railroad, Road	.....
Dam or lock, Sand	.....

VEGETATION

Woods	.....
Orchard or vineyard	.....

HYDROGRAPHY

Well: Perennial, Intermittent	.....
Intermittent stream: Single, Double line	.....
Disappearing stream; Swamp or marsh	.....
Intermittent lake; Dry lake	.....

BOUNDARY

International	.....
First-order administrative division	.....

AERODROMES (Military or Civil)

Runway pattern known	.....
Runway pattern unknown	.....

HELIPORT/HELIPAD

.....	.....
-------	-------

RADIO FACILITIES

VHF OMNI RANGE (VOR) VORTAC	.....
TACAN VOR with DME	.....
Other facilities	.....

CONTROLLED AIRSPACE

ADIZ	.....
Other facilities	.....

VISUAL AIDS AND OBSTRUCTIONS

Obstruction	.....
1108-Elevation of obstruction top, above sea level (259)-Elevation of obstruction top, above ground level	.....
Group obstruction	.....

Radio facility obstruction

Power transmission line	.....
Aero light: Marine light	.....

TERRAIN ELEVATIONS

Spot elevation: Normal, Critical	.....
----------------------------------	-------

HIGHEST KNOWN ELEVATION IS 4787 FEET at the following coordinates:  
Geographic: 43°00'N, 45°16'E  
Grid: .....N22281

NOTES  
Powerlines are shown except within populated place lots. Other obstructions are shown if they are 200 feet or more above ground level. See caution notes. On this graphic a lane is considered as being 8 feet (2.5 meters) in width. Road classification should be referred to with caution. THE REPRESENTATION OF BOUNDARIES IS NOT NECESSARILY AUTHORITATIVE. ALIGNMENT OF ALL BOUNDARIES IS APPROXIMATE. THE ADMINISTRATIVE DIVISION BOUNDARY BETWEEN CHECHENSKAYA RESPUBLIKA AND RESPUBLIKA INGHUSHIYA HAS NOT BEEN DETERMINED.

Reprinted by NIMA 03-2002

NSN 7641014104416  
NIMA REF. NO. 1501ANK3802