

SERIES 1501 AIR SHEET NL 38-7 EDITION 2

POPULATED PLACES—MESKUN YERLER
Over 100,000 Nüfusü 100.000 den yukarı **MOSKVA**
50,000 to 100,000 **KUMERTAU**
10,000 to 50,000 **Okha**
2,000 to 10,000 **Kuva**

ROADS—YOLLAR
Dual highway Super grade **4 LINES DUAL**
All weather, hard surface **4 SERTLIK 4 TABAKALI**
More than two lanes wide **3 LINES**
Two lanes wide **2 SERTLIK**
One lane wide **1 SERTLIK**
All weather, loose or light surface **3 LINES**
Dual gravel surface **3 SERTLIK**
More than two lanes wide **2 LINES**
Two lanes wide **2 SERTLIK**
One lane wide **1 SERTLIK**
Fair or dry weather, loose surface **2 LINES**
Dry or loose weather, loose surface **1 LINE**
Cart track **1 LINE**
Footpath, trail **1 LINE**
Road on dam **1 LINE**

RAILROADS—DEMIRYOLLAR
Normal gauge Normal hat 1.44m (4'8 1/2")
Station position **known**
Station position **unknown**
Narrow gauge Dir hat

BOUNDARIES—HÜDUTLAR
International Devleletarası
First order administrative division
Second order administrative division
Reservation Yabani hayat mekânı

OTHER FEATURES—BAŞKA İSARETLER
School, Church, Mosque, Synagogue
Dair, Cami, Mescit, Sinagog
Cemetery, Muslim, Hebrew, Moslem, Muslim, Hebrew
Ruins, Wall
Harbeler, Duvan
Hot, road, landmark, feature, mine
Kubuk, kuyuk, çukuk, çukuk, çukuk, çukuk
Tank, Well (other than water), Sarcophagus, Sarcophagus
Astronomic position, Astronomic mark
Horizontal control point, UTM control mark

RELIEF—KABARTMA
Sand, Distorted surface
Kum, Çarpık saha
Dunes, Crescent, Ripple, Lateral
Kumul, Actar, Dalgacık, Yanardun
Escarpment, Levee
Dik kayalık, yafarak, Sed

TERRAIN ELEVATIONS—ARAZ YÜKSEKLİKLERİ
Spot elevation, Normal, Critical
Yükseklik noktası, Normal, Yalıtım
Highest known elevation in coordinates
En yüksek bilinen yükseklik koordinatlar
Geographic Coordinate 45°00'N 42°04'E
Grid Coordinate K08087
The accuracy of all elevations shown on the graphic is not within 100 feet
Bu grafikte gösterilen yükseklikler doğrultusunda 100 fit için bir hata vardır

VEGETATION—NEBATAT
Woods, Scattered trees Ağaçlık, Dağınık ağaçlar
Orchard, Plantations, Vineyards
Meyve bahçeleri, Çiçeklik, üzüm bağları

HYDROGRAPHY—İDROGRAFI
Well, Spring, Intermittent lake
Kuyu, Çeşme, Müddetli göl
Wadi, Rice paddy, Swamp, marsh
Kuru dere, Çiğnek, Sazlık
725-Elevation Yükseklik

AERODROMES (Military or Civil)
HAVA MEYDANLARI (Hükümet veya Sivil)
Runway pattern known
Pista bilinen alan
EDNA Name ICAO
50-Length of longest runway to nearest hundreds of feet
50-uzunluğu en uzun pist yüzünden en yakın yüz fit için
Soft or unimproved surface
Yumuşak veya geliştirilmemiş yüzey
725-Elevation Yükseklik

HELIPORT/HELIPAD ALANI
HELİPORT/HELİPAZ ALANI
HELIPORT/HELIPAD AT HOSPITAL
HASTAHANE YANINDA HELİPORT/HELİPAZ ALANI

RADIO AIDS TO NAVIGATION
SEYRÜSEFERE RADYO YARDIMI
VOR RANGE (VOR)
VOR DANI RANJE (VOR)
VORTAC
VORTAC
VOR with DME
VOR ile DME
Other facilities
Diğer tesisler

RADIO FACILITIES-RADYO TESİSLERİ
RADIO RANGE LF/MF
RADYO RANJE LF/MF
MULTIPLE RADIO FACILITIES
MÜTEADDİT RADYO TESİSLERİ
CONTROLLED AIRSPACE
KONTROLLÜ HAVA SAHASI

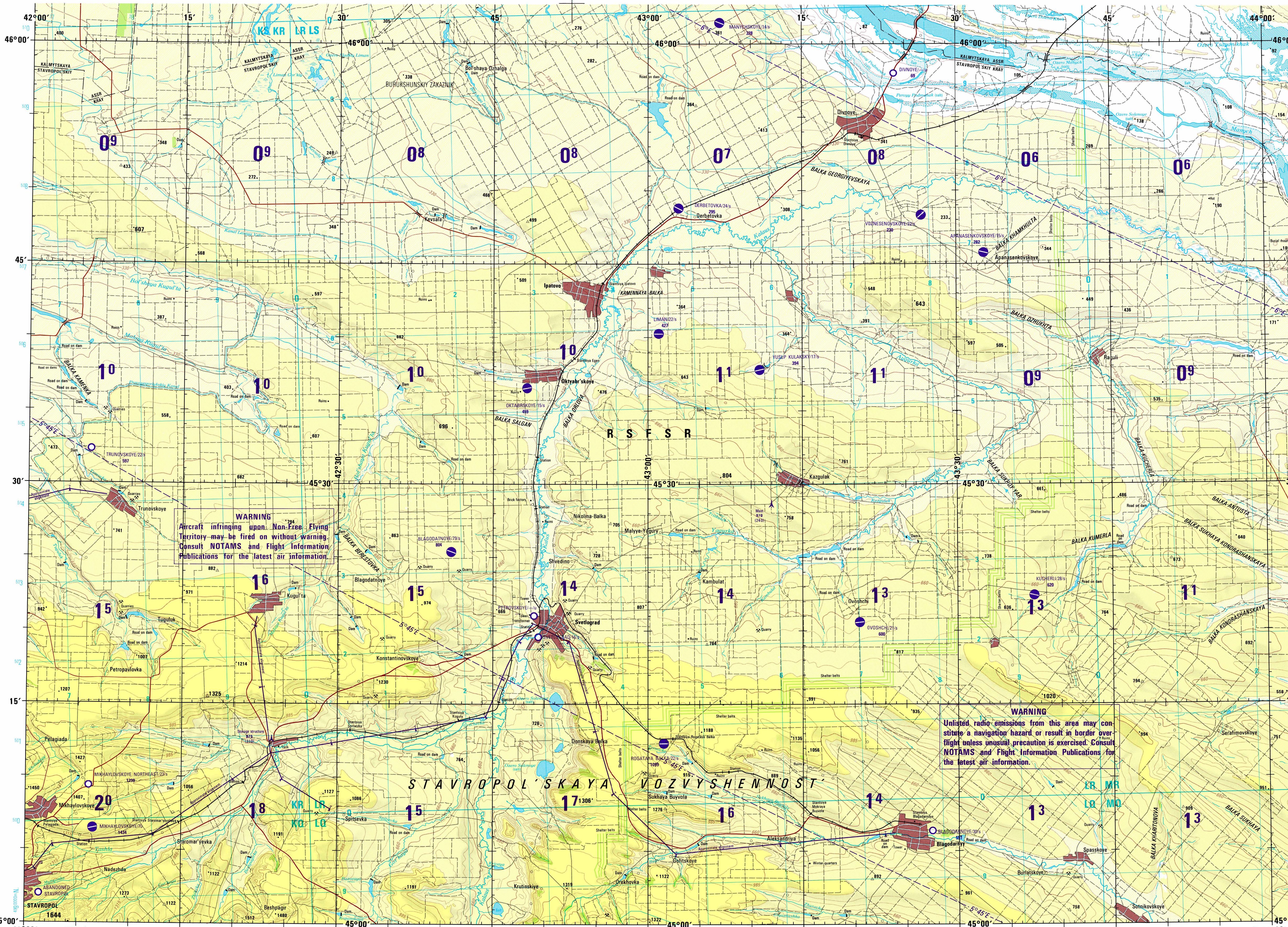
VISUAL AIDS AND OBSTRUCTIONS
GÖRÜŞ YARDIMCI İSARETLER VE ENGELLER
Obstruction Engel
1100-Elevation of obstruction top, above sea level
Engel tepesinin ortalaması denize seviyesinden yüksekliği
(250) Elevation of obstruction top, above ground level
Engel tepesinin yer seviyesinden yüksekliği
Group obstruction Grup halindeki engeller
Radio facility obstruction Radyo tesisi engeli
Power transmission line Enerji nakil hattı
Visual ground sign Görünür yer işaretleri
Aero light, Marine light Hava feneri, Deniz feneri

LOCATION DIAGRAM
YERİNDEN GÖRÜNÜŞÜ
UNAC INDEX SHOWN IN BLUE
UNAC İNDİKSİ GÖRÜNÜŞÜ

Prepared and published by the Defense Mapping Agency
Hydrographic/Topographic Center, Washington, D. C.
Compiled September 1985

CONVERSION OF ELEVATIONS
FEET METERS
1000 305
900 274
800 244
700 213
600 183
500 152
400 122
300 91
200 61
150 46
100 31

SCALE 1:250,000
SVETLOGRAD, SOVIET UNION
SERIES 1501 AIR SHEET NL 38-7 EDITION 2
SERIES 1501 COMPANION SHEET IS EDITION 2

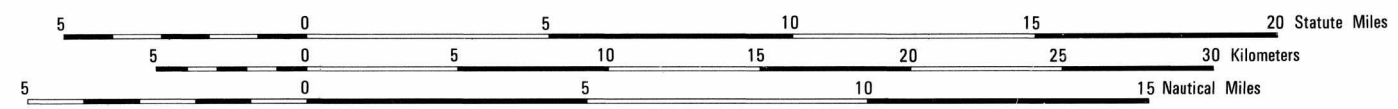


WARNING
Aircraft infringing upon Non-Free Flying Territory may be fired on without warning. Consult NOTAMS and Flight Information Publications for the latest air information.

WARNING
Unlisted radio emissions from this area may constitute a navigation hazard or result in border over-flight unless unusual precaution is exercised. Consult NOTAMS and Flight Information Publications for the latest air information.

JOINT OPERATIONS GRAPHIC (AIR)

SCALE 1:250,000



CONTOUR INTERVAL APPROXIMATELY 70 FEET
MUNHANILAR TAKRİBEN 70 FİTİR

CONVERSION OF ELEVATIONS

FEET	METERS	FEET	METERS
1000	305	10000	3048
900	274	9000	2743
800	244	8000	2438
700	213	7000	2134
600	183	6000	1829
500	152	5000	1524
400	122	4000	1219
300	91	3000	914
200	61	2000	610
150	46	1500	457
100	31	1000	305

EXAMPLE 1:000 METERS AND SQUARE METERS TO FEET AND SQUARE FEET

EXAMPLE 1:000 METER REFERENCE (ON MISAL)

UNAC INDEX SHOWN IN BLUE

GRID COORDINATES

ATTENTION

THIS CHART CONTAINS MAXIMUM ELEVATION FIGURES (MEF)

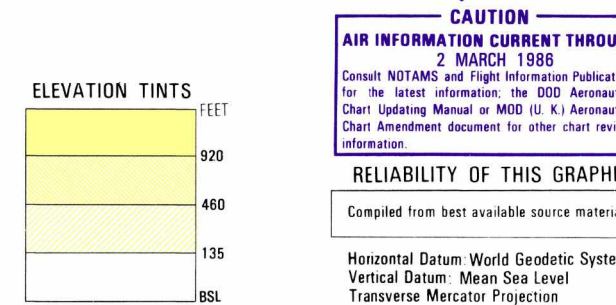
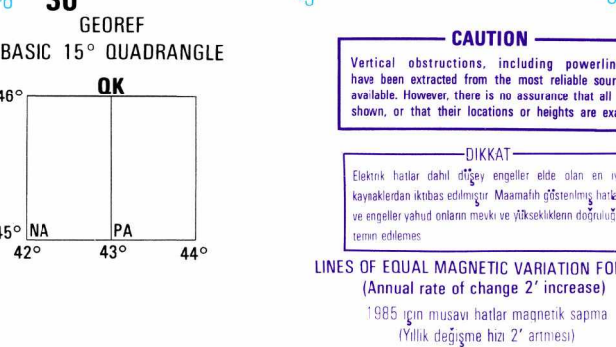
The Maximum Elevation Figures shown in quadrangles bounded by solid lines of latitude and longitude are represented in THOUSANDS and HUNDREDS of feet above mean sea level. The MEF is based on information available concerning the highest known feature in each quadrangle, including terrain and obstructions (trees, towers, antennas, etc.)

EXAMPLE: 12,500 feet

125

GLOSSARY

ASSR	second order administrative division	ikinci sınıf idare takımı
Balka	stream	deresi
Canal	canal	kanal
Kray	second order administrative division	ikinci sınıf idare takımı
Liman	lake	göl
Mts	mountain	dağ
Ozera	lake	göl
R S F S R	first order administrative division	birinci sınıf idare takımı
Shtabya	station	istasyon
Vozvyshennost	upland	yükseklik
Yar	game reserve	harcık
Zakaznik	game reserve	yabani hayat mekânı



NOTES

Powerlines are shown except within populated place limits. Other obstructions are shown if they are 200 feet or more above ground level. See caution note.

Hava feneri verileri, enerji nakil hatları gösterilmiştir. Yer üstünden 200 fit ya da daha yüksek engeller gösterilmiştir. Her nota bakınız.

On this graphic a line is generally considered as being 8 feet (2.5 meters) in width.

Bu grafikte bir sınırlama genellikle genellikle 8 fit (2,5 metre) genişlikte kabul edilir.

Names for symbolized populated places are omitted where information is not available or where density of detail does not permit their inclusion. Taahhütleri gözetilmeden, yerleşim yerlerinin gösterilmesi mümkün olduğu takdirde isimler gösterilmeyecektir.

The reliability of vegetation information is undetermined. Bitki örtüsünün güvenilirliği belirsizdir.

Road classification should be referred to with caution. Road classification should be referred to with caution. Road classification should be referred to with caution.

Yol sınıflandırması hakkında dikkatli olunmalıdır. Yol sınıflandırması hakkında dikkatli olunmalıdır. Yol sınıflandırması hakkında dikkatli olunmalıdır.

Horizontal Datum: World Geodetic System 1972
Vertical Datum: Mean Sea Level
Transverse Mercator Projection

NSN 7641014102224 Ed. No. 002
NRA Ref No. 1501ANL3807