

SERIES 1501  
SHEET NM 37-2  
EDITION 2

- POPULATED PLACES**
- Over 100,000
  - 50,000 to 100,000
  - 10,000 to 50,000
  - 2,000 to 10,000
  - Less than 2,000
- ROADS**
- Dual highway
  - All weather, hard surface
  - More than two lanes wide
  - Two lanes wide
  - One lane wide
  - All weather, loose or light surface
  - More than two lanes wide
  - Two lanes wide
  - One lane wide
  - Fair or dry weather, loose surface
  - Track or trail
  - Route marker
- RAILROADS**
- Normal gauge 1.52m (5')
  - Narrow gauge
- BOUNDARIES**
- International
  - First-order administrative division
  - Second-order administrative division
  - Reservation
- OTHER FEATURES**
- Landmark
  - Horizontal control point
  - Level, burial mound
  - Mine
  - Dam or lock, Sand
  - Dunes, Crescent, Lateral, Ripple
- VEGETATION**
- Woods
  - Orchard or vineyard
- HYDROGRAPHY**
- Well, Perennial, Intermittent
  - Intermittent streams: Single, Double line
  - Disappearing stream, Swamp or marsh
  - Intermittent lake, Land subject to inundation
- TERRAIN ELEVATIONS**
- Spot elevation normal, critical
  - HIGHEST KNOWN elevation is 263 meters at the following coordinates:  
Geographic: 51°47'N, 38°21'E  
Grid: DT5538
  - ± following elevation value indicates accuracy is not within 30 meters.
- AERODROMES (Military or Civil)**
- Runway pattern known - EDNA - Name
  - 221 - Elevation
  - Runway pattern unknown
- HELIPORT**
- VISUAL AIDS AND OBSTRUCTIONS**
- Obstruction
  - 338 - Elevation of obstruction top, above sea level
  - (78) - Elevation of obstruction top, above ground level
  - Group obstruction
  - Radio facility obstruction
  - Power transmission line

**CAUTION**

Vertical obstructions, including powerlines, have been extracted from the most reliable sources available. However, there is no assurance that all are shown, or that their locations or heights are exact.

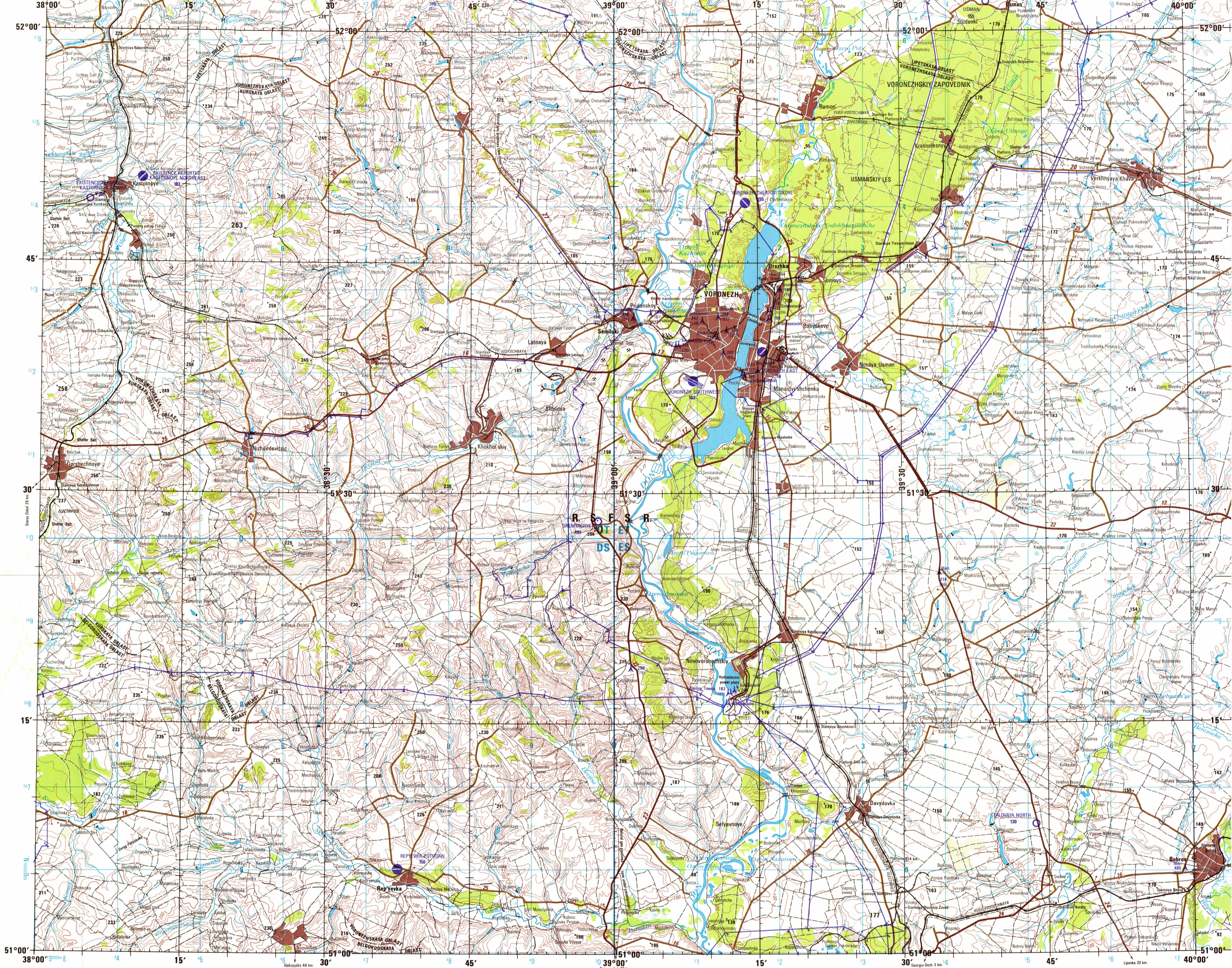
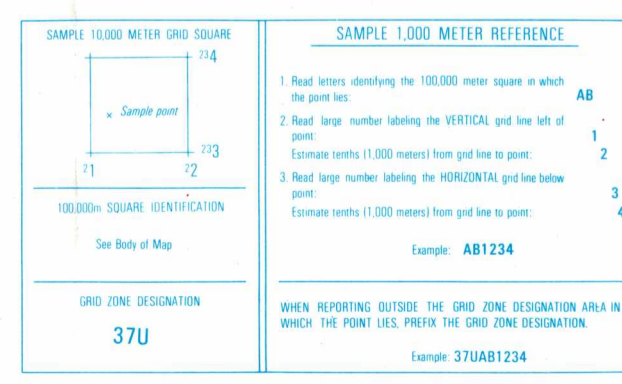
1985 MAGNETIC DECLINATION FROM TRUE NORTH VARIES FROM 7° (120 MILS) EASTERLY FOR CENTER OF WEST EDGE TO 7½° (130 MILS) EASTERLY FOR CENTER OF EAST EDGE.

**LOCATION DIAGRAM**  
(WAC INDEX SHOWN IN RED/BROWN)

NM 36-9	NM 37-7	NM 37-8	NM 37-9	NM 38-7
NM 36-12	NM 37-10	NM 37-11	NM 37-12	NM 38-10
NM 36-3	NM 37-1	SOVIET UNION		234 235
NM 36-6	NM 37-4	NM 37-5	NM 37-6	NM 38-4
NM 36-9	NM 37-8	NM 37-9	NM 38-1	

**CONVERSION OF ELEVATIONS**

METERS	FEET
1000	3281
900	2953
800	2625
700	2297
600	1969
500	1640
400	1312
300	984
200	656
150	492
100	328

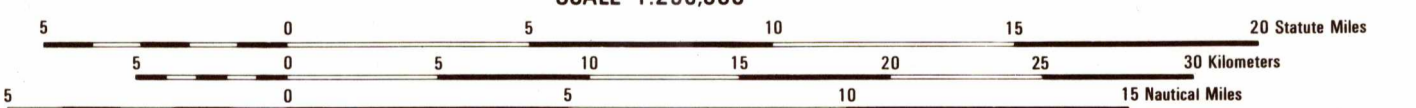


Prepared and published by the Defense Mapping Agency Hydrographic/Topographic Center, Washington, D. C. Compiled in 1983

ELEVATIONS IN METERS

**JOINT OPERATIONS GRAPHIC**

SCALE 1:250,000

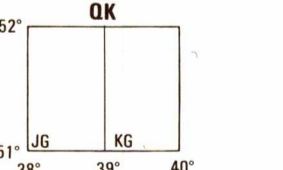


CONTOUR INTERVAL 20 METERS

USERS SHOULD REFER CORRECTIONS, ADDITIONS, AND COMMENTS TO THE NIMA CUSTOMER HELP DESK: 1-800-455-0889, COMMERCIAL 1-314-260-1238, OR WRITE TO: DIRECTOR, NATIONAL IMAGERY AND MAPPING AGENCY, ATTN: CD, 8013 LEE HIGHWAY, FARMVA, VA 22031-2137

ELEVATIONS IN METERS

GEOREF BASIC 15° QUADRANGLE



**RELIABILITY OF THIS GRAPHIC**  
Compiled from best available source materials.  
Horizontal Datum: World Geodetic System  
Vertical Datum: Mean Sea Level  
Transverse Mercator Projection

- GLOSSARY**
- Kolkhoz
  - Oblast
  - Oblast
  - R.S.F.S.R.
  - Stanytsya
  - Vokzal'skiy
  - Zapovednik

**LIMITED DISTRIBUTION** Distribution authorized to DoD, Army, Navy, Air Force, and Marine Corps. Distribution is limited to the following: US, Canada, and Mexico. All other requests to Headquarters, NIMA, ATTN: Distribution Officer, Stop P-25, Dayton, OH 45460-0202.

**NOTES**

Projections are shown except within populated place tints. Other obstructions are shown if they are 61 meters or more above ground level. See caution note. On this graphic a lane is generally considered as being 2.5 meters (8 feet) in width. Road classification should be referred to with caution. ALIGNMENT OF ALL BOUNDARIES IS APPROXIMATE. Figures along roads indicate approximate distances in kilometers.

NSN 7643014047441  
NIMA REF. NO. 1501XNM3702

SCALE 1:250,000  
VORONEZH, SOVIET UNION

SERIES 1501  
SHEET NM 37-2  
EDITION 2