

兵庫旅

The Heart of Japan

HYOGO



Official Hyogo Guidebook

兵庫県オフィシャルガイドブック



Let's take a walk through Hyogo

悠然感受兵庫旅程
 悠然感受兵庫旅程
 천천히 걸어보십시오. 효고의 거리를...



但馬
Tajima
但馬
타지마

丹波
Tamba
丹波
탄바

姫路、赤穂
Himeji, Ako
姫路、赤穂
히메지, 아코

宝塚
Takarazuka
宝塚
다카라즈카

神戸
Kobe
神戸
고베

淡路
Awaji Island
淡路島
아와지시마

Japan
Hyogo

Discover the old & new everywhere you walk
 步步使人怀旧，路路展现新容——兵庫之旅
 步步使人怀旧，路路展现新容——兵庫之旅
 걸음 때마다 새로운 발견과 즐거움이 있습니다.
<https://www.hyogo-tourism.jp/>

Hyogo has everything!
 Hot springs, great food,
 history and nature.

Hyogo

[Hyogo is the Center of Japan]
 Hyogo prefecture is located in the center of Japan, with the meridian (135 degrees east longitude) that sets Japanese Standard Time inside the prefecture. Due to its convenient location, Hyogo is well-connected to other major cities by highways, railroads, and airlines.

[Hyogo, the Possible Origin of Japan]
 According to the legend in the Kojiki, the oldest book of historical records in Japan, Awaji Island in Hyogo was the first island of Japan to be created. Hyogo, Osaka and Kyoto, the central area of Kansai region was the center of Japanese politics and culture for over 1,000 years before the capital moved to Tokyo in 1868. Because of this background, Hyogo has many important cultural assets and historical and natural heritage sites, including the famous Himeji Castle.

[Hyogo is a Prefecture of Gourmet Food]
 Hyogo is famous for its wonderful food. Who can forget the world renowned taste of Kobe Beef? Come and enjoy genuine Kobe Beef at its origins. Along with Kobe Beef, seafood is extremely popular in Hyogo. Fresh and delicious seafood is caught from the Sea of Japan in the winter and from the Seto Inland Sea in the summer. If you ever try sweet Matsuba crabs in winter, it will be something you'll never forget. Also famous for its sweets and sake, Hyogo offers amazing dining experience like no other.

[Hyogo and its Famous Hot Springs]
 One thing that most visitors to Japan look forward to is onsen, or hot springs, and Hyogo has many hot springs all over the prefecture. Arima Hot Springs in Kobe is one of the oldest in Japan, and is considered to be one of the three best hot springs in the country. Also, Kinosaki Hot Springs in northern

Hyogo has been a popular getaway for many writers and artists who are looking for a nice quiet place to relax and spend some time. If you are visiting from another country, Kinosaki will allow you to experience the unique atmosphere of Japan and its hot spring town.

[Friendly to International Visitors]
 Hyogo prefecture has always been an important place for trading because of its geographical advantages. Especially since the opening of the Port of Kobe in 1868, it has attracted many foreign traders and became an important hub for international trade. There are a large number of international companies situated in Hyogo even today, with many foreign residents. This makes Hyogo a very comfortable place to visit for all international travelers. Hyogo always welcomes visitors from other countries.

Come enjoy the unique culture and food that can only be experienced in Hyogo. We hope this guide book will help you make the most of your time in this amazing prefecture.





Kobe ★

A City of Vivacity and Style



Sannomiya and Motomachi areas are the busiest parts of Hyogo. From fashionable stores and restaurants to European-style buildings in the Former Foreign Settlement or Kitano Foreign Residences, this area is known as one of the most lively and stylish areas in Japan. Nankinmachi, or Kobe's Chinatown, is only a few minutes' walk from Motomachi station. Walking towards the Port of Kobe you'll find the symbol of the port, Port Tower, and the Maritime Museum, which is shaped like a sailing ship in Meriken Park. At night, the area is illuminated and the Port Tower lights up a beautiful red color. The night view of Kobe is something you cannot miss out. Soaking up the view on a cruise that sails from the port to the Akashi Kaikyo Bridge is one of the most popular activities in Kobe.



Kobe Harborland MAP P33 F-1

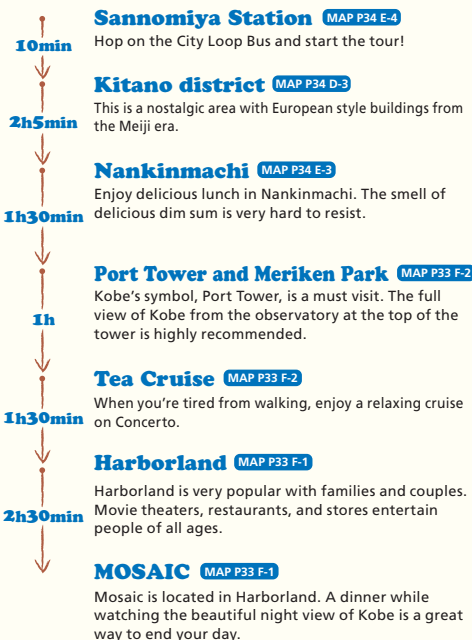


A small-scale amusement park, fashionable stores, restaurants, and Kobe souvenirs can be found here.

Kobe Harborland Information Center
 Website: <http://www.harborland.co.jp/en>
 Tel: 078-360-3639



Model Course



Nankinmachi MAP P34 E-2,3



Motomachi, Yokohama, and Nagasaki are home to three of the largest Chinatowns in the country. Every year on Chinese New Year, Nankinmachi hosts a festival with cultural events such as Lion Dance and Dragon Dance.

Access: 5 minute walk from JR Motomachi station.

Kitano district ★

Modern City Filled with Foreign Influences

With the opening of the Port of Kobe, foreign cultures were brought into Kobe. From the beginning of the Meiji era, new culture and many industries were created. Between 1887 and the beginning of the Taisho era, foreigners' lives were well established and they started building houses on the hills of the Yamanote area (in Kitano). This is the start of the Kitano Foreign Residences. At that time, over 100 houses were built. Kitano area exemplifies Kobe's Western influences and attracts many visitors from all over the country. Over twenty buildings are on display, including the Weathercock House and Moegi House, designated as important national cultural properties. At the Kitanomachi-kobo, or Kitano workshops, visitors can purchase local items as well as experience making them. Kitano area offers many sightseeing attractions, interesting stores and souvenirs, as well as delicious dishes from all genres, making it a great place to spend a day. To fully appreciate the area, take a long stroll through town.

Access: 15 minute walk from JR/Hanshin/Hankyu/Kobe Municipal Subway Sannomiya station.



Weathercock House MAP P34 D-4



House of Uroko (Scale) MAP P34 D-4



Moegi House MAP P34 D-3



Rhine House MAP P34 D-4

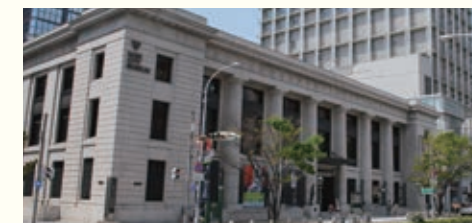
Ikuta Shrine MAP P34 D-3



This historical and well-respected shrine even appears in the Nihon Shoki, the second oldest book of classical Japanese history. It is a very popular shrine that is known as a shrine of love, business, health, and fortune.

Website: <http://www.ikutajinja.or.jp/>
 Tel: 078-321-3851
 Hours: 7am until sunset (Open daily, free entry)
 Access: 10 minute walk north from JR/Hankyu/Hanshin Sannomiya station.

Kobe City Museum ★★ MAP P34 F-3



Opened in 1982, the museum revolves around the theme of Intercultural Exchange. Its permanent exhibition focuses on the city of Kobe as well as cultural exchanges between Japan and other countries.

Website: <http://www.city.kobe.lg.jp/museum/>
 Tel: 078-391-0035
 Hours: 9:00-17:00 (Last admission 16:30) Closed on Mondays (The following day when Mondays falls on a national holiday), New Year holidays
 Admission: Adults ¥200, College/High School Students ¥150, Junior/Elementary School Students ¥100
 Access: 10 minute walk from JR/Hankyu/Kobe Municipal Subway Sannomiya station, or JR/Hanshin Motomachi station.

※The museum will be closed for renovation until November 1, 2019



Kikusedai observation platform on Mount Maya ★★

Mt. Rokko Enjoy abundant nature, beautiful views, and outdoor activities.

The Rokko Mountain range stretches 30km from east to west. It is a popular site for outdoor activities for the people of Kansai. The spectacular night view of Kobe from Mt. Rokko and Mt. Maya is often called 'Ten million-dollar view by night'.

Website: <http://www.rokkosan.com>
Access: Take a city bus from JR or Hankyu Rokkomichi station to the Rokko cable car.



Only about an hour's drive from Sannomiya, you'll be able to experience nature's beauty in all seasons. Standing 931 meters above sea level, this mountain offers many leisure facilities.

Disaster Reduction and Human Renovation Institution MAP P32 A-4



This institution was founded to convey the experiences and lessons from the Hanshin-Awaji Earthquake to the next generation and to reduce damage during disasters. There are diorama models that show rows of houses and stores immediately after the quake and a theater.

Website: <http://www.dri.ne.jp/en/> **Tel:** 078-262-5050
Hours: Oct - Jun 9:30 - 17:30 (Last entry 16:30),
 Jul - Sept 9:30 - 18:00 (Last entry 17:00) (Fri - Sat 9:30 - 19:00)
Dates closed: Mondays
Admission: Adults ¥600, College Students ¥450,
 High School Students and younger are free.
Access: 12 minute walk from JR Nada station or
 10 minute walk from Hanshin Iwaya station/
 Hanshin Kasuganomichi station.



Hyogo Prefectural Museum of Art ★ MAP P32 A-4



The largest art museum in western Japan, this beautiful concrete building covered with glass and Mikage stone was designed by the world renowned architect Tadao Ando. Many artworks from both Japanese and international artists are on display. Special exhibitions (additional fee required) are also held.

Website: <http://www.artm.pref.hyogo.jp/eng/> **Tel:** 078-262-0901
Hours: 10:00-18:00 (Last entry 17:30) Closed on Mondays, New Year's Eve and New Year's Day
Price: Adults ¥500
 College Students ¥400
 Seniors (+70) ¥250
 High School students and under are free
Access: 10 minute walk from JR Nada station/
 Hanshin Iwaya station.

MAP P34 D-4

★★

Takenaka Carpentry Tools Museum



The one and only museum of carpentry in Japan. In addition to a display of carpentry tools, the exhibition includes a model of Toshodaiji Temple and an impressive skeleton of a tea ceremony room. As the building itself is a masterpiece in craftsmanship, this is a museum where you can experience the mastery of carpentry.

Website: <http://dougukan.jp>
Tel: 078-242-0216
Hours: 9:30-16:30 (Last admission 16:00) Closed on Mondays
 (The following day when Mondays falls on a national holiday) and New Year's holidays
Price: Adults ¥500
 High school & College Students ¥300
 Seniors (+65) ¥200
 Junior high School students and under are free
Access: 3 minute walk from Subway Shinkobe station.
 Catch the Kobe-shi Bus as line No.2 or No.18 from Sannomiya station. Get off at the Kumochi 6-chome bus stop and 2 minute walk.

Takarazuka Revue



Since its first show in April of 1914, Takarazuka has always been loved and admired by many. Its biggest attraction is the elegant and dreamy shows of all-female cast. It is rare for such a big group to do revues and shows so often, and the fact that they do all types of genres makes them one of a kind.

Website: <http://kageki.hankyu.co.jp/>
Tel: 0570-00-5100
Access: 5 minute walk from JR or Hankyu Takarazuka station.



MAP P31 B-1

Akashi Bridge & Maiko Marine Promenade ★★



The bridge first opened on April 5th of 1998, and is the longest suspension bridge in the world with a center span of 3,911 meters. It connects Kobe and Awaji Island. At night, the bridge is illuminated and changes its color depending on time and season. Visitors can also enjoy the Maiko Marine Promenade, the Akashi Kaikyo Bridge Center, the Sun Yat-sen Memorial Hall, and other facilities nearby, or a peaceful time at Maiko Park.

Maiko Marine Promenade

Website: <http://hyogo-maikopark.jp/>
Tel: 078-785-5090
Hours: 9:00-18:00 (Open until 19:00 during summer)
 Apr. - Sept. : Open everyday
 Oct. - Mar. : Closed on the 2nd Monday of the month, 12/29-31
Admission: Adults ¥250 (Weekdays) ¥300 (Weekends)
 Seniors (+70) ¥100 (Weekdays) ¥150 (Weekends)
 High School students and under are free
Access: 5 minute walk from JR Maiko station or Sanyo Maiko Koen station.

Tetsujin 28-go MAP P32 B-3



Known as Gigantor in the US, this 18 meter tall monument at Wakamatsu Park near JR Shin-Nagata station is quite a sight. It was built in honor of the late Manga artist from Kobe, Mitsuteru Yokoyama.

©HIKARI PRODUCTION/KOBE TETSUJIN PROJECT2011
Website: <http://www.kobe-tetsujin.com/>
Access: 5 minute walk from JR Shin-Nagata Station.

Tezuka Osamu Manga Museum ★



This memorial museum is dedicated to the god of Japanese Manga, Osamu Tezuka. He is the creator of famous Astro Boy and Jungle Taitei and so on. Memorabilia, such as Tezuka's handwritten works and first editions, are on display.

Anime workshops are also available to let visitors experience creating anime.

Website: <http://www.city.takarazuka.hyogo.jp/tezuka/>
Tel: 0797-81-2970
Hours: 9:30-17:00 (Last entry 16:30) Closed on Wednesdays,
 12/29-31 (Open during holidays and school holidays)
Admission: Adults ¥700, Junior/High School Students ¥300,
 Elementary School Students ¥100
Access: 8 minute walk from JR/Hankyu Takarazuka station,
 or 5 minute walk from Hankyu Takarazuka Minamiguchi station.



Kobe Beef

The Best Beef in the World,
Kobe Beef



Whether visiting from overseas, or from a nearby prefecture, most visitors refuse to leave Kobe without trying the famous, world-class Kobe Beef. It was named by the foreign settlers that came and lived in Kobe when the Port of Kobe opened in 1868. The tender, juicy, beautifully colored, and highly marbled meat was extremely popular, and it is still loved by gourmets across the world today.

Kobe Plaisir

MAP P34 E-3



Kobe Beef steak, shabu-shabu, and seiro-mushi (steamed in a wooden frame holder) served with other fresh ingredients from Hyogo. Enjoy a nice, relaxing dinner with specially selected Japanese sake and wine.

Website: <http://www.kobe-plaisir.jp/e-index.html>
Hours: Lunch 11:30-15:00 (Last call 14:00), Dinner 17:00 - 22:30 (Last call 21:00) Closed on Mondays
※ Tuesday when a national holiday falls on Monday
Access: 3 minute walk from Sannomiya station

Kobe steak restaurant Mouriya (Flagship restaurant)

MAP P34 E-3



The established Kobe beef restaurant first opened its door back in 1885. The finest quality is always guaranteed.

Website: <http://www.mouriya.co.jp/en/>
Tel: 078-391-4603
Access: 3 minute walk from Sannomiya station.
Opening hours: 11:00-15:00 (Lunch), 15:00-22:00 (Dinner)
Last call 21:00

Teppanyaki Fuji (Flagship restaurant)

MAP P34 D-3



From adults to children, enjoy famous Kobe Beef Steak to casual Soba-meshi fried rice. Specially-selected Kobe Beef Course can be shared with family and friends. Dishes are served at affordable price in a friendly atmosphere.

Website: <https://www.teppanyaki-fuji.jp/english-information/>
Opening hours: 17:00-23:00 (Last Call: 22:30) Irregular holiday
Access: 3-minute walk from Hankyu/Subway Sannomiya station

Misono

MAP P34 E-3



Misono is the first restaurant in the world which served 'Teppanyaki Steak' and still keeps its original flavour alive. English speaking staff will surely make your dining experience more enjoyable.

Website: <http://misono.org/en/>
Hours: Lunch 11:30-14:30(LO 13:30), Dinner 17:00-22:00(LO 21:00)
Tel: 078-331-2890
Access: 2 minute walk from Hankyu/Subway Sannomiya station

Kobe Beef Steak Teppanyaki SETUGEKKA (Flagship restaurant)

MAP P34 E-3



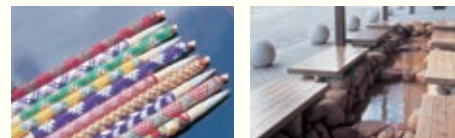
Skilled chefs cook well-aged Kobe Beef in the best way to bring out the rich flavor. Enjoy crispy yet melting texture of the world's finest steak.

Website: <https://kobe-setsugetsuka.com/>
Access: 1-minute walk from Hankyu Sannomiya station (West Exit)

Arima Onsen

MAP P37

Arima Onsen is located near the downtown of Kobe, yet it is surrounded by the beautiful nature of Mt. Rokko. One of the three best hot springs of Japan, this hot spring town with a nostalgic atmosphere has two public baths. Visitors don't have to stay at the inn to bathe in its hot spring, and can enjoy different hot springs in one day.



Kin no Yu and Gin no Yu



Arima Onsen's most famous bath, kinsen, or the gold spring, is popular for its high salinity and mineral-rich water.



Kin no Yu

Website: <https://arimaspa-kingin.jp/en-01.htm> Tel: 078-904-0680
Hours: 8:00-22:00 (Last entry 21:30) Closed on 2nd and 4th Tuesdays of the month, and New Year's Day.
Price: Adults ¥650, Elementary School Students ¥340, Infants ¥140

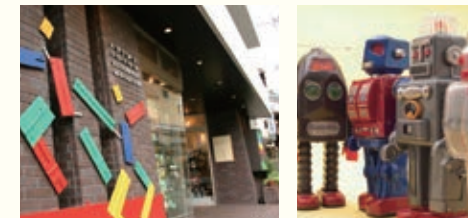
Access: 5 minute walk from Kobe Electric Railway Arima Onsen station. JR Bus runs from Sannomiya station to Arima Onsen station (40 minutes.)

Gin no Yu

Website: <https://arimaspa-kingin.jp/en-02.htm> Tel: 078-904-0256
Hours: 9:00-21:00 (Last entry 20:30) Closed on first and third Tuesdays of the month, and New Year's Day.
Price: Adults ¥550, Elementary School Students ¥290, Infants ¥120

Access: 10 minute walk from Kobe Electric Railway Arima Onsen station.

Arima Toys & Automata Museum



This museum displays a vast array of toys such as vintage tin toys, and explains how they work. There is no doubt that people at all ages can enjoy.

Website: <http://www.arima-toys.jp/> Tel: 078-903-6971
Opening Hours: 9:30-18:00 (Last Entry 17:30)
Price: Adults ¥800, Children ¥500, Free under the age 3.
Access: 5 minute walk from Arima Onsen station.



Nesta Resort Kobe

MAP P31 A-1



Visitors can enjoy their stay at this resort facility featuring a vast natural environment and many state-of-the-art activities. Nesta Resort Kobe offers amusement year round at the hotel, glamping cabins, barbecue park, illuminated areas, swimming pool, and many more facilities.

Website: <http://www.nesta.co.jp/>
Access: 2 minute walk from JR Sannomiya station. (Shinki Bus Sannomiya Bus Terminal) It is approx. 40 minute from Sannomiya to Nesta Resort Kobe.

Hotel The Pavone

Tel: 0794-83-5000
Room rate: Twin-bedded room for one night: ¥15,000~.
The price depends on the period. Hot Springs tax doesn't be included in the room rate. (Junior high school students or older ¥150)

Water Fort (Pool)

Tel: 0794-83-5000 Hours: Jul-Oct 1st (9:00-18:00, 19:00)
Admission: Adults ¥2300
Elementary students and under ¥1800

Glamp(Glamorous Camp) BBQ Park

Glamp Cabin(Up to 8 people can use)
Tel: 0794-83-5211 Hours: 11:00-21:00 (L.O.20:30)
Fees: ¥30,000(11:00-15:00 or 16:00-21:00. Meals +¥3,500~)



Himeji

MAP P35

A City with a World Heritage Site

In the old days, Himeji was situated as an important site for transportation, and it was the center for politics, economy, and culture for the Harima region. The importance of the city can be seen from historical assets like Himeji Castle, which is a registered UNESCO World Heritage site, and Engyoji Temple on Mt. Shosha. The city is still filled with unique festivals and local industries today.



Himeji Castle ★★★



Main Keep, and openable and closable plastered lattice is attached there. This window is used on the renovation of the roof, so to speak side door.

● Letters on the pillars

Some letters and marks are engraved on the pillars in the Main Keep. These are called 'Banzuke', which shows each component used to which part.



● East main pillar

This is one of the two main pillars (25-meter-long) sustaining the Main Keep. This region was endowed with mountain forest resources since then.



● Effective use of the base

The difficulty of castle construction is to build a high architecture on stone wall because it is very difficult work to pile random-sized stones and make the surface even and rectangular. The base is needed here. Correcting the gap and roughness of the stone wall by timbers used for the base makes the construction easier since the pillars are set vertically on an even and rectangular surface.

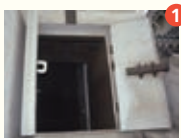
Castle Information

Hours: 9:00-16:00 (for gate closing, 17:00)
※Summer (April 27-August 31), 9:00-17:00 (for gate closing, 18:00)
December 29 and the 30th are closed.
Access: 15 minute walk from JR/Sanyo Himeji station
Admission: Adult ¥1,000, Child ¥300
Website: <https://www.city.himeji.lg.jp/castle/>
Tel: 079-285-1146

Approach to the Main Keep

● Entrance of the Main Keep

The entrance consists of big double-door-style, outer one is covered with plaster and inner one is covered with iron plate.



This construction avoids fire as with storehouse (Japanese traditional construction). The entrance connected to I passage turret (I Watari yagura) has double-door-style as well.

● Sliding doors on stairs

Some sliding or wooden doors are attached on the stairs in the main keep. These doors have function in prevention of fire spreading.



● Window in the gable

There is a gap under the gable on the upper stories of the



To learn more about Himeji Castle... Amazing facts about Japan's greatest castle!

● The castle has never been damaged by war.

Himeji city was an important military site during World War II and the city was heavily attacked and a large part of the city was destroyed during the war. But miraculously, the castle was not damaged. It's the largest castle in the country that has kept its original structure.

● There are many traps around the castle.

The paths to get to the main tower have quite a few twists and turns, making it very difficult to reach the tower. Even the gates themselves are very small so that only one person can go through at a time.

- (1) The Hishi-no-mon gate to the I-, Ro-, and Ha-no-mon gates seems like the shortest route to the castle, but it is actually a roundabout way.
- (2) Going through the Ru-no-mon gate is the shortest route, but there is a hole in the stone wall nearby, called the Uzumi-mon, which is a trap that can send landslide through it and block the Ru-no-mon gate.
- (3) Standing at Ha-no-mon, the main tower looks extremely close, but if you continue on that path, it will take you away from the tower.
- (4) Although the path between Mizu-no-nimon and Mizu-no-sanmon is the correct way to the main tower, the path between these two gates is a downhill slope built on purpose to make intruders think they're going the wrong way.

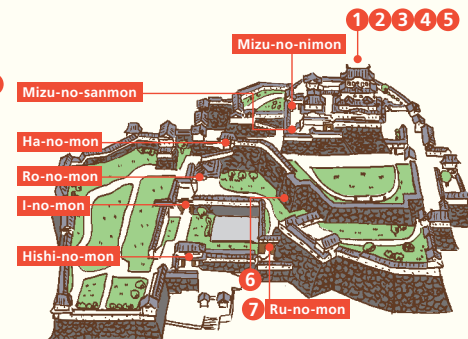
● Stone walls that even ninjas cannot climb.

The walls at Himeji Castle are built in the shape of a fan, meaning the walls aren't built straight, but they are built with a curve so that ninjas can't climb up from the outside wall.

There are more interesting facts at Himeji Castle.
Take your time to explore and learn about the castle.
There is more than meets the eye in the magnificent structure.



Even ninjas can't climb this stone wall!



Koko-en ★

MAP P35



A traditional Japanese garden with an area of over eight acres, Kouko-en is built around a large pond, and includes a restaurant Kassui-ken where guests can enjoy lunch, as well as Soju-an where traditional Japanese green tea is served.

Website: <http://himeji-machishin.jp/ryokka/koko/en/>
Tel: 079-289-4120

Hours: Late Apr – Aug 31: 9:00-18:00
Sept 1 – Mid Apr: 9:00-17:00

Date closed: 12/29, 12/30.

Admission: Adults ¥300, Elementary to Junior High School Students ¥150

Access: 15 minute walk from JR/Sanyo Himeji station.

Engyo-ji ★

Located 371 meters above sea level on top of Mt. Shosha in western Himeji, Engyo-ji is home to many Important Cultural Properties. Maniden, a beautiful wooden hall, Daikodo (main hall), Jikido (lodging and dining hall, now exhibiting temple treasures) and Jogyodo (gymnasium) are especially popular. It was selected as a filming location for the Hollywood movie *The Last Samurai* starring Tom Cruise.



Website: <http://www.shosha.or.jp/>
Tel: 079-266-3327
Hours: 8:30-17:00 Open year-round
Admission: ¥500

Junior High School Students and younger are free.
Access: Take the Shinki Bus for the Shosha Ropeway from JR/Sanyo Himeji station, and get off at the last stop.

Hyogo Prefectural Museum of History

MAP P35



The museum showcases the history of Hyogo, folk performing arts, children's culture and Himeji Castle and its castle town through a virtual theatre. People chosen by drawing can experience wearing a traditional Japanese kimono and armor.

Website: <http://www.hyogo-c.ed.jp/~rekihaku-bo/>
Tel: 079-288-9011

Hours: 10:00-17:00 (Last entry 16:30) Closed on Mondays (The following day when Mondays falls on a national holiday) and New Year's holidays.

Admission: First floor is free, Second Floor: Adults ¥200 College Students ¥150

High School students and under are free
Access: Take the Himeji Castle Loop Bus from Himeji station to Hakubutsukan-mae. (8 minutes)

Take the Shinki bus from Himeji station to Hakubutsukan-mae. (8 minutes)



Japan Toy Museum ★★



The museum displays Japanese folk toys, modern toys and traditional dolls, as well as toys and dolls from some 160 countries around the world. Visitors can touch and play with some of the toys.

Website: <http://www.japan-toy-museum.org/>
Tel: 079-232-4388

Hours: 10:00-17:00 Closed on Wednesdays, except for national holidays. Also closed 12/28 to 1/2

Admission: Adult ¥600, high school /college students ¥400, children four and older ¥200. Groups of 20 or more: 20 percent discount. Advance reservations required for groups.

Access: From JR Himeji station, take the Bantan line five stations (about 15 minutes) to Kohro. Walk east 14 minutes

Filming locations for movies.



[Norwegian Wood] (2010)

Filming Locations: Tonomine Highlands and Mineyama Highlands in Kamikawa town, and Imagoura Senjojiki in Kasumi town

With over 10 million copies sold, and translated into 33 different languages, novelist Haruki Murakami's best-selling novel *Norwegian Wood* was made into a movie. The beautiful scenes have earned great acclaim at Mostra Internazionale d'Arte Cinematografica. In the novel, the main character spent his high school days in Hyogo, and in the movie, places such as the Senjo-jiki structure of Imagoura Coast in Kasumi town, schools in Kobe city, and other areas were used for filming. The scene with the field filled with silver grass was filmed at Tonomine and Mineyama Highlands in Kamikawa town, and is one of the most important scenes from the movie.

For those of you who enjoy Murakami's work, come and visit his hometown. Grab his other popular book, *Henkyo/Kinkyō* and follow the footsteps of this great novelist.

Haruki Murakami

Haruki Murakami grew up in Ashiya city in Hyogo prefecture until he went to college. In one of his books, he mentioned that his hometown "was a comfortable place to spend childhood days." Debuting in 1979 with his first novel, *Hear the Wind Sing*, he has authored many best-selling novels. In 2005, *Kafka on the Shore* was chosen as one of *New York Times*' ten best books of the year, and he became internationally known. In 2010, he was nominated for the Nobel Prize for Literature.



Starring: Kenichi Matsuyama, Rinko Kikuchi
Director: Tran Anh Hung

[The Last Samurai] (2003)

Filming Location: Engyo-ji Temple on Mt. Shosha in Himeji

The film was created with the cooperation of three countries, the U.S., New Zealand, and Japan. The story takes place in the 1800s, and is about an American captain that comes to Japan and learns the ways of the samurai. Many of the scenes were filmed in Engyoji Temple on Mt. Shosha. The Daikodo (main hall), Jikido (lodging and dining hall, now exhibiting temple treasures) and Jogyodo (gymnasium) were used, giving the film a solemn and authentic feel. The scene with Tom Cruise and Ken Watanabe talking under the cherry trees in full bloom was filmed at the grave of the former lords that owned Himeji Castle. The room that Tom Cruise was using is now a tea shop that serves green tea and Japanese sweets.



Starring: Tom Cruise, Ken Watanabe
Director: Edward Zwick

[007: You Only Live Twice] (1967)

The filming was done in many popular tourist locations across Japan. Himeji Castle was used as a training ground for ninjas in the film. Himeji Castle has also been used for other films such as *Kagemusha* and *Ran* (1985) by Akira Kurosawa, and the TV series *Shogun* (1980) starring Richard Chamberlain.

Filming Location: Himeji Castle, Port of Kobe
Starring: Sean Connery, Donald Pleasence
Director: Lewis Gilbert

["Haruhi Suzumiya" Series] (2003)

This is a popular novel by Nagaru Tanigawa. Tanigawa's hometown of Nishinomiya is used as a model for the city where sets the story. The novel about high school students and their unusual school life became a huge hit, and it was made into a TV animation series, a comic, and a video game. Trains on the Hankyu Line, Shukugawa Station, Nishinomiya Kita-guchi Station, and popular Kobe sweets "Gaufre" are some of the Hyogo related things that appear in the series.

Location: Nishinomiya city



Kinosaki

A City of Onsen and Yukata

MAP P37

Kinosaki is a historical hot spring town, famous for the seven hot springs in the area. Called Sotoyu-meguri, visiting these seven hot springs is a popular activity. With beaches in the summer, and delicious crab in the winter, Kinosaki receives quite a few tourists throughout the year.



Kinosaki Onsen ★★ Wear a yukata and go hot-spring hopping

Seven unique hot springs are dispersed throughout town and are all within walking distance of one another.

Website: <https://visitkinosaki.com/about-kinosaki/the-7-mystic-onsen/>



A Bath that brings good fortune
ICHINO-YU
Featuring a cave made of natural boulders engulfed in ambient lighting.

Website:
<https://visitkinosaki.com/things-to-do/ichino-yu/>



©Visit Kinosaki



A Bath for Beauty
GOSHONO-YU
Goshono-yu was built in the likeness of Kyoto's Imperial Palace. Relax to the crashing sounds of the waterfall in the background.

Website:
<https://visitkinosaki.com/things-to-do/goshono-yu/>



©Visit Kinosaki



A Bath for Salvation
JIZO-YU
Named after a Jizo (guardian deity) that was found at the site.

Website:
<https://visitkinosaki.com/things-to-do/jizo-yu/>



©Visit Kinosaki



A Bath for happiness
KONO-YU
One of the oldest hot springs in Kinosaki.

Website:
<https://visitkinosaki.com/things-to-do/kono-yu/>



©Visit Kinosaki



A Bath with a beautiful panoramic outdoor view
SATONO-YU
Located right next to the Kinosaki Onsen station. A free footbath near the entrance is also available for use.

Website:
<https://visitkinosaki.com/things-to-do/satono-yu/>



©Visit Kinosaki



A Bath which grants one wish
MANDARA-YU
Historically known as Kinosaki's very first hot spring.

Website:
<https://visitkinosaki.com/things-to-do/mandara-yu/>



©Visit Kinosaki



A Bath for Fertility
YANAGI-YU
A deep, wooden bath with a nostalgic atmosphere of the Taisho period.

Website:
<https://visitkinosaki.com/things-to-do/yanagi-yu/>



©Visit Kinosaki

Make the most of your travel to Kinosaki!



Kiyamachi-Koji



This shopping complex is composed of ten stores and restaurants serving sweets and a relaxation facility. All ten stores have unique characteristics that will be sure to entertain you.

Tel: 0796-32-4411
Access: 10 minute walk from JR Kinosaki Onsen station.

(Fish Market) Okesho Sengyo & Dining Room Kaichuen



Kaisen-don (seafood on rice) with eleven different kinds of seafood ¥1,890

The first floor is a fresh seafood market where you can purchase Matsuba crab, freshly caught fish, and souvenirs. The second floor is a restaurant where you can have some of the best tasting seafood in Japan.

Website: <https://www.okesho.com/02kaichu/eng01.html>
Tel: 0796-29-4832
Opening Hours: 11:00-18:45 (Flagship restaurant) Closed on New Year's holidays.
Access: 3 minute walk from JR Kinosaki Onsen station.

Kinosaki Onsen Ropeway



Enjoy the greenery of spring and summer, leaves changing color in fall, and a snow covered landscape in winter. Enjoy the view of the Sea of Japan and the Maruyama River from the top of the mountain.



Website: <https://kinosaki-ropeway.jp/>
Tel: 0796-32-2530
Hours: 9:10-17:10 (Last car leaves at 16:50)
Date closed: Every 2nd & 4th Thursday
Round ticket: Adults (Junior High School and older) ¥900, Children (6+) ¥450
Access: 20 minute walk from JR Kinosaki Onsen station.

Tajima

Only a short distance away



Izushi



Known as Little Kyoto of Hyogo, Izushi preserves its history and is designated as an Important Preservation District. Symbolic Shinkoro, Samurai Residences and Izushi Castle Ruins are must-see buildings in the town. For a local specialty, handmade Izushi soba Noodles are a standout option.

San'in Kaigan UNESCO Global Geopark



This natural park has rare geological and geographical features. San'in Kaigan Geopark is

now a member of Global Geoparks Network, and the museum offers a variety of displays and hands on activities.

Website: http://sanin-geo.jp/en/index_english.html
Tel: 0796-82-5222
Hours: 9:00-17:00 Closed on Tuesdays. Free entry.
Access: 20 minute walk from JR Hamasaka station.

Hyogo Park of the Oriental White Stork



Japan's special natural monument, Oriental White Storks are protected, bred, and returned to its natural habitat here.

Website: www.stork.u-hyogo.ac.jp/
Tel: 0796-23-5666
Hours: 9:00-17:00 Closed on Mondays and 12/28-1/4. Free Entry.
Access: Take the Zentan Bus from Toyooka station to Konotori-no Sato-koen (15 minutes).





Sasayama

The Bounty of Nature MAP P36

Tamba-Sasayama region is known for its elegance. Located close to Kyoto, the area developed a long time ago. With many samurai and merchant houses still standing, the castle-town of Sasayama has historic remnants. Tachikui pottery is one of the six oldest potteries in Japan, and it has over 800 years of history. It is a popular souvenir from the area. This region is nationally famous for botan-nabe, a hotpot with locally caught boar meat cooked in miso soy bean paste. Also popular are chestnuts, matsutake-mushrooms, and black beans.

Tachikui Sue-no-Sato

(Tachikui Pottery Village)



Experience hands on pottery workshops with an exciting variety of making techniques.

Website: <https://tanbayaki.com/>
Tel: 079-597-2034

Price: High School Students and older ¥200, Elementary and Junior High School Students ¥50
Hours: Apr – Sept 10:00-18:00,
Oct – Mar 10:00-17:00
Date closed 12/29 - 1/3

Access: Catch the Shinki Green Bus headed for Shimizu for 10 minutes from JR Aino station. Get off at Sue-no-Sato-mae.

Museum of Noh Artifacts



Noh masks and costumes used in traditional Japanese Noh dance are on display.

Website: <http://www.nohgakushiryoukan.jp/>
Tel: 079-552-3513
Hours: 9:00-17:00

Closed date : Mondays (The following day when Mondays falls on a national holiday) and New Year's holidays. 7/1-8/31, 12/25-2/28.

Admission: Adults ¥500, High school & College students ¥400, Elementary & Junior high school students ¥200

Access: 20 minutes by Shinki Green Bus from JR Sasayama-guchi station to Hon-Sasayama.

The Museum of Ceramic Art, Hyogo



Museum with a wide range of Hyogo ceramics, mainly Tamba and Izushi style potteries, are on display.

Website: <http://www.mcart.jp/english/>
Tel: 079-597-3961
Hours: Apr – Oct: 10:00-19:00,
Nov - Mar 10:00-18:00

Access: Take the Shinki Green Bus headed for Shimizu from JR Aino station. Get off at the Hyogo-Tougei-Bijutsu-Kan.



Sasayama Castle Oshoin



Splendid wooden building reconstructed on the Sasayama Castle Ruins.

Website: http://www.withsasayama.jp/REKIBUN/osoyno_top.htm
Tel: 079-552-4500

Hours: 9:00-17:00 (Last entry 16:30)
Closed on Mondays.

Admission: Adults ¥400, High school and College students ¥200, Elementary and junior high school students ¥100 (Group discounts available)
Four-Facility Pass (Sasayama Castle Oshoin, Aoyama History Village, Anma Family Samurai Residence Museum, and Sasayama Historical Art Museum): Adults ¥600, High school and college students ¥300, Elementary and Junior High School Students ¥150

Access: Take the Shinki Green Bus Sasayama-Eigyosho from JR Sasayama-guchi station for 15 minutes. Get off at the Nikaimachi bus stop and walk for 5 minutes.



Enjoy great tasting sweets made from black beans, Tamba Dainagon beans, chestnuts, and other foods taken from the fruit park in Tamba. Visitors can also participate in harvesting the fruit.



Awaji

MAP P38

The creation of Japan began with Awaji Island

Awaji, the first island to be formed according to the creation myth of Japan, is located about an hour drive from Kobe. It is a popular island-resort, where you can find abundant nature, delicious food from both the land and the sea, and hot springs.

Awaji Yumebutai



With over 70 acres of land, this park includes large conference halls, a resort hotel, an outdoor theater, a botanical garden, and other facilities. Originally, land from this area was taken to build Kansai International Airport, but the famous architect, Tadao Ando, wanted to rebuild the area with the concept of harmony between humans and nature. His unique concrete-based buildings match perfectly with the recovering nature.

Website: <http://www.yumebutai.co.jp/> Tel: 0799-74-1000
Access: A 1 hour ride on JR Bus/ Honshi-Kaikyo Bus from Sannomiya station. Get off at the Awaji Yumebutai-mae bus stop.



Awaji Ningyo-za puppet theatre Backstage Tour ★★



The Awaji Puppet Joruri is a puppet performance that developed from Shinto rituals. This aspect of popular culture is deeply rooted on Awaji Island and has a long history of Approx. 500 years. Each group of three people operates one

puppet, and it would not be an exaggeration to say that the plays, passed down for generations and enacted with great elegance, convey the essence of Japan's proud performing arts. The puppets, appearing even more alive than humans, express emotional drama that invites spectators into a world of dreams. Performance with backstage tour is held a couple times a day. Please check the schedule on the website!

Website: <https://awajiningyoza.com/en/top/>
Regular Performance: 10:00, 11:10, 13:30, 15:00
Ticket: Adults ¥1,800, Highschool/Junior high school students ¥1,300, Elementary school children ¥1,000, 3yrs+ ¥300
Access: 30 seconds from Fukura Bus Terminal on foot / 80mins from Kobe by car.



Awaji Island West Coast



TM & © TOHO CO., LTD.

Since 2008, Pasona Group has established a variety of facilities and events making use of local resources to boost tourism from Awaji Island.

Zenbo Seinei is the latest facility in which you can rebalance both mind and body through Zen experiences such as meditation and monk-inspired Zenbo Cuisine regardless of your religion.

NIJIGEN NO MORI is an anime-themed Park in which you can experience 2-dimensional popular Japanese anime and game contents in real life, surrounded by the beautiful nature of Awaji Island and digital art elements. Experience these in addition to a variety of other facilities along the Awaji West Coast!

Website: <https://en.awajishima-resort.com/>

Izanagi Shrine



Izanami and Izanagi, the creators of Japan, are enshrined at this ancient shrine. It is said to bring luck to marriage and longevity.

Website: <https://kuniuminoshima.jp/>
Tel: 0799-80-5001

Access: Take Awaji Kotsu express bus from Sannomiya to Tsuna Kou and change to the Awaji Kotsu bus Nishiura Line. Five minute ride to Izanagi Jingu-mae bus stop.

The Great NARUTO UZUSHIO Whirlpools Cruise Tour



"Uzushio" is a rare natural phenomenon caused by the tide rushing through the extremely narrow Naruto Strait between Awaji Island and Shikoku. The moon's tidal force causes these whirlpools,

which means that especially large ones can be seen around the times of the new and full moons. These whirlpools are one of the largest in the world, with it becomes approximately 30 meters in diameters. From Port Fukura of Minami Awaji City, you can join the "Uzushio Cruise" whirlpools observation cruise tour throughout a year! The newly built "Kanrin-Maru" is one of the largest sailing pleasure ships in Japan. Enjoy a live guide (in Japanese) by the onboard guide.

Hours: 9:00-17:00
Ticket: Adults ¥2,500, Elementary school children ¥1,000, Preschool-age FREE
Access: 30 seconds from Fukura Bus Terminal (Bus), 80mins from Kobe. (Car)
Website: <https://www.uzu-shio.com/>

Japan Heritage

The legacies that represent unique regional histories, traditions and customs, preserved in the form of “stories,” have served to pass down Japan’s culture and tradition and are recognized by the Agency for Cultural Affairs as “Japan Heritage.” This system aims to promote regional revitalization by supporting each region’s independent efforts to maintain and utilize the entirety of various attractive cultural assets that comprise the abovementioned stories, and strategically publicize them widely in Japan and around the world.

Dekansho-bushi in Tamba-Sasayama

hometown memories passed down in folk songs
[Sasayama City] / Designated in 2015



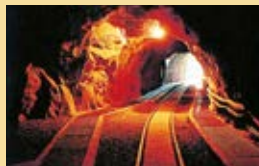
Tamba-Sasayama once flourished as a castle town. The dekansho-bushi is the folk song deriving from local folk song sung in that region during the Edo Period (1603-1868), and its lyrics have conveyed the local

climate and culture, human nature, famous sights, and culinary specialties of each area and of the times. People here have sung the dekansho-bushi for generations, treasuring the landscapes of their villages and enhancing their affection for their hometown. To this day, local people have continued to create new lyrics to pass down new traditions on to the next generation. Through the dekansho-bushi (which has grown to over 300 verses long), we can experience the traditions of Tamba-Sasayama, as well as its streetscapes of rows of old houses and charming paths.

The Gin-no-Bashamichi and the Koseki-no-Michi

Old Silver Mine Carriage Road and Road of Ore

a 73 km track that supported the resource-rich country
[Himeji City, Fukusaki Town, Ichikawa Town, Kamikawa Town, Asago City, Yabu City] / Designated in 2017



The Gin-no-Bashamichi is a straight track in the Bantan region in the center of Hyogo, stretching from south to north to connect Shikama Port in Himeji and the Ikuno Silver Mine. The Koseki-no-Michi further

stretches to the Akenobe and Nakaze Mines. The 73 kilometer track runs through old station towns retaining its atmosphere from the Meiji Era (1868-1912), leads to mine towns, and finally reaches the quiet tunnels of each mine. These mines are the starting point of Japan’s modernization and the terminal of this track. Visitors will be able to see the quaint landscape of mine towns and the history of local lifestyles while imagining mineral-rich old Japan.

Awaji Island: creation of Japan’s first island and the people of the sea

[Awaji City, Sumoto City, Minami-Awaji City]
Designated in 2016



The *Kojiki* (“Records of Ancient Matters”), Japan’s oldest existing written record of its history, begins with the country’s creation myth. According to this, Awaji Island was the first island that was created in Japan. What lies

beneath this story is the existence of the Ama (“people of the sea”), who created a new era and supported the government, provincial kings and people in the capital in Japan’s Kansai region by introducing metal tools, salt-making techniques and advanced navigation skills. Awaji Island, the largest island in the Seto Inland Sea, represents the history of the Ama who played a central role in the formation of ancient Japan.

Six Ancient Kilns

home of pottery born and developed in Japan
[Sasayama City (Hyogo Prefecture) and others]
Designated in 2017



The Six Ancient Kilns are Japan’s six most noteworthy pottery sites of old: Tamba, Seto, Tokoname, Shigaraki, Bizen and Echizen. At these kilns, traditional techniques that Japan boasts to the world and date back to

the prehistoric Jomon period have been preserved. These are the 100% Japanese pottery production sites, born and developed in Japan. People have been engaged in the production of pottery in these areas since medieval times, and there are maze-like alleys that lead to kiln sites and studios of various sizes. While walking along the walls, led on by the smoke from chimneys as though you are searching for a lover, you will find yourself in the world of traditional Japanese beauty that cherishes simplicity and nature.

Hot Springs in Hyogo

Some of the best onsen in the prefecture.



Arima Onsen

Along with Dogo Onsen and Shirahama Onsen, Arima Onsen is one of the three oldest in Japan, with over 1400 years of history. It is located on the northern part of Mt. Rokko.



Kinosaki Onsen

Taste seasonal delicacies along with delicious seafood at Kinosaki Onsen. Going on a sotoyu-meguri (visiting seven different hot springs) in a yukata and geta sandals is a traditional way to enjoy Kinosaki.



Yumura Onsen

With over 1,000 years of history, this quiet hot spring nestled in the mountains is loved by many. The hottest spring reaches 98°C, which is hot enough to boil an egg.



Takarazuka Onsen

This 700 year-old hot springs has been popular since the Kamakura period. Conveniently located close to Kobe and Osaka, it stands right next to the famous Takarazuka Grand Theater.



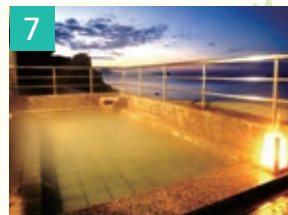
Takedao Onsen

Located in Mukogawa Valley, it is surrounded by beautiful nature. The hot spring can be easily accessed from Kobe and Osaka. This area is also a top spot to view beautiful autumn leaves.



Shiota Onsen

Famous for the captivating view of Seppiko Mountain from the hot springs, it is also called Harima’s getaway, and attracts a number of visitors.



Ako Onsen

It is famous for its stunning view overlooking the Seto Inland Sea. The hot springs is also called “the Hot Spring of Youth” because it is said to be beneficial for your bones, muscles, and skin.



Sumoto Onsen

It is located in a historical castle-town along the coast of Sumoto. The largest hot spring town on Awaji Island, it is considered to be a resort-hot springs.



Iwaya Onsen

It is located on top of a hill overlooking the Akashi Kaikyo Bridge. Water contains radon, which is said to be good for your body. Located on the northern tip of Awaji, it is popular onsen at the entrance to Awaji Island.

Japanese Food

Enjoy seasonal fresh food from both the sea and the mountains.

Japanese cuisine puts an emphasis on using the best-tasting seasonal food, and is cooked in broth taken from bonito or kelp, with salt, soy sauce, or miso soy bean paste, to add flavor. Dishes are low in calories, finely refined, and come in many different forms. Hyogo prefecture is surrounded by both the mountains and the sea, offering variety of ingredients to choose from. For meat, there is Kobe Beef, boar meat, as well as seafood like crab, snapper, oysters, and octopus. Fresh fruit and vegetables are also widely available. Noodles like Izushi soba, made from buckwheat, and Ibo-no-ito somen, or rice-noodles, are also very popular.



Hyogo Specialties



Crabs

Tajima produces the largest catch of Matsuba crabs in all of Japan. Matsuba crabs are known for their texture and sweet flavor.



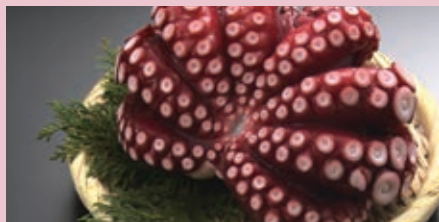
Seabreams

An abundant food source and a strong current produce meaty, flavorful, top-quality Seabreams.



Oysters

Harima-nada in Hyogo has the perfect water for oysters to live in, producing large, delicious oysters.



Octopuses

The Strait of Akashi, with the longest suspension bridge in the world, is also famous for great-tasting octopuses. They are served in many ways such as sashimi, shabu-shabu and simply boiled.

Dining in Hyogo

Sennin-Daikan

MAP P34 E-4



An authentic Japanese restaurant serving local sake, Izushi soba, and fresh ingredients from the Seto Inland Sea and the mountains of Tajima and Tamba. The restaurant also offers hot pot with Banshu Hyakunichi chicken, as well as shabu-shabu using Black Haired Wagyu.

Website: <http://www.nishimuraya-fc.com/sennin/>
Tel: 078-232-3355
Hours: 11:30-22:00 Open year-round
Access: 3 minute walk from JR/Hankyu/Hanshin/Subway Sannomiya station.

All-You-Can-Eat seafood buffet Fisherman's Market Kobe Mosaic

MAP P33 F-1



Over 90 dishes using mainly seafood are made in an open-kitchen and served in all-you-can-eat style. With a fantastic view of the Port of Kobe and Meriken Park, it's a perfect place to enjoy both lunch and dinner.

Website: <https://umie.jp/shops/detail/106>
Tel: 078-360-3695
Hours: 11:00-23:00 Open year-round
Access: 8 minute walk from JR Kobe station.

Hyogo Soul Food

Akashi-yaki



Akashi-yaki is a famous local dish from Akashi city in Hyogo. Softer than takoyaki, they are dipped in broth instead of covered with sauce.

Venue: Shopping arcades such as Uo-no-tana located south of Akashi station.

Soba-meshi



Soba-meshi is fried rice flavored with sauce and mixed with yakisoba noodles. It is a very popular B-class gourmet in Nagata ward of Kobe city.

Access: South of Shin-Nagata station.

Katsumeshi



Katsumeshi is a dish with beef cutlet on top of rice with demi-glace sauce on top. You can try Katsumeshi in Kakogawa city in Hyogo.

Access: Kakogawa station

Sake

Japanese Sake: Refined over its long history



Japanese sake has a history of about 2,000 years. Sake from Hyogo has always been considered to be one of the very best in the country, especially the varieties made in Nada Gogo area. This area has the following qualities that allow them for the production of great tasting sake.

- ① Miyamizu water from Mt. Rokko is ideal water for creating sake.
- ② Local large and high-quality rice is perfect for sake brewing.
- ③ There are many master sake brewers from the nearby Tamba region.
- ④ A cold front called Rokko-oroshi that blows down from the mountains creates the perfect condition for sake brewing.

All of these factors helped create amazing flavor, therefore this area is considered to produce the best sake in Japan. Water wheels were introduced that allowed for finer refinement of rice, and the fact that the area is close to the ocean helped with distributing the products. These are all part of the reason why the area was able to produce top-quality sake that is loved by people all over Japan.

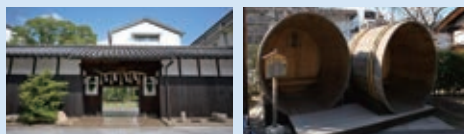


Sugitama

Sugitama is a ball made of cedar leaves. A fresh, green sugitama is hung on the doorstep of the breweries to notify people that a new batch of sake has been made.

MAP P36

Kobe Shushinkan Breweries



Established in 1751, during the mid-Edo era, the brewery is a well-known maker of popular sake called Fukuju. It uses locally grown rice such as Yamadanishiki and Gohyakuman-goku, and the finest Miyamizu water, keeping the tradition of creating sake by handcrafting techniques.

Website: <http://enjoyfukuju.com/en/>
Tel: 078-841-1121
Hours: 10:00-18:00 Open year-round
Restaurant hours: 11:30-14:30, 17:30-22:00
Access: 8 minute walk from Hanshin Ishiyagawa station, or an 8 minute drive from JR Rokkomichi station.

*Advance reservation is required for a brewery tour.



Japanese Sake Scale



On the back label of Japanese sake, there are numbers with + and - signs. This shows the amount of sugar in the sake. For sake, a negative

number means it's sweet, and positive number means it's dry.

How to Enjoy Japanese Sake

Sake can be enjoyed chilled, warm, or at room temperature, which makes it very unique. The flavor changes depending on the temperature. The flavor of sake also changes as it ages, becoming milder.

The Power of Sake

Since the old days, sake brewers were known for their beautiful skin. Sake has anti-oxidants which work for anti-aging and skincare. Sake lees, a by-product of producing sake, are also known to have a high nutritional value.

Japanese sake and wine

Sake is perfect for paring with food as wine. Although sake is made from grains and wine from fruit, both are made through fermentation, and can be enjoyed with food. Unlike wine, you might need some time to relish sake at first. That's just like how most people start off liking white wine, before moving on to red. Sake is much milder when compared to wines, which are more acidic with strong fragrances, so it goes well with any dishes. Try the Daiginjo before a meal to fully enjoy the fruity and delicate flavor. Sake can make dishes taste much better, so just like wine, be sure to think about what sake, and when and how it will be served.

Free tasting events in sake breweries are great opportunities to learn about sake while actually tasting it. You'll learn to love sake once you learn all the stories surrounding its production. By trying different sake, you'll find the one that's right for you, so visiting breweries with sake-tasting is a fun and interesting activity!



Daiginjo-shu



Junmai-shu

Daiginjo-shu

A top-quality sake made by milling brown rice to less than half of its size-considered to be a work of art.

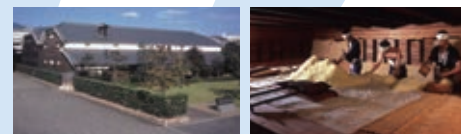
Junmai-shu

Traditional Japanese sake, that focuses on flavor and not the aroma. You'll be able to enjoy the flavor of rice.

Photo: Kobe Shushinkan Breweries

MAP P36

Hakutsuru Sake Brewery Museum



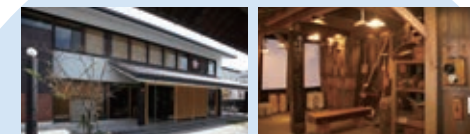
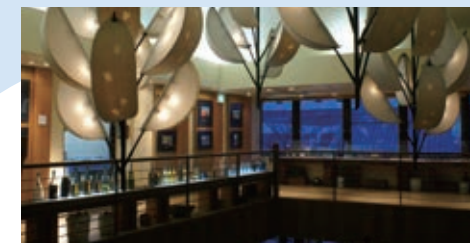
An original brewery, Hakutsuru, was in operation until 1969 but was later made into a museum. The process of sake brewing, and the lives of sake brewers are displayed using models. There's a free tasting for the Junmai nama-genshu, which is made from 100% Yamada-nishiki rice.

Website: <http://www.hakutsuru.co.jp/english/>
Tel: 078-822-8907
Hours: 9:30-16:30 (Last entry 16:00) Closed on Mondays.
Access: 5 minute walk from Hanshin Sumiyoshi station.



MAP P36

Sakuramasamune Memorial Hall



Sake-brewing tools, old signs, sake bottles, and different logos and labels are on display on the second floor. They also have other items that are related to sake and brewing.

Website: http://www.sakuramasamune.co.jp/sakuraen/sakuraen_index.html
Tel: 078-436-3030
Hours: 10:00-19:00 (Closed on Tuesday)
Restaurant hours: 11:30-15:00 (Last call 14:00),
17:00-22:00 (Last call 21:00)
Closed on Tuesdays
Access: 5 minute walk from Hanshin Uozaki station.



... Sake Breweries offering free sake-tasting.

OMIYAGE

If you are having hard time finding souvenirs, here are some recommended stores. From Hyogo's specialties to souvenirs for those who are living outside of Japan, there is a variety of items to choose from. Authentic souvenirs that can only be found in Kobe, and traditional Tachikui pottery, are some of the most popular souvenirs.

Hyogo Furusato-kan

MAP P34 E-4



Renewal opened in Oct. 2022! Over 2,000 selected items from entire the prefecture are gathering here. You will definitely find the one for souvenir.

Hours: 10:00-20:00
Location: 5F of Kobe-Hankyu department Store new building. Conveniently located at 3-5 mins-walking from "Sannomiya" Station that is the hub station of the central district of Kobe City.

Official Website: <https://www.hyogo-bussan.or.jp/shop/furusato>

Omiage Hakkutsuya

MAP P34 D-4



Directly connected to the Shinkansen Shin-Kobe Station! This is a specialty product store where you can discover unique and "high-quality" Hyogo products and tourism attractions such as sweets, food, sake, and crafts from all over the prefecture.

Hours: 10:00-18:00 (Weekday) / 10:30-19:00 (Sat, Sun, national holiday)
Location: 3F of Kotonohako. 1 min from Shinkansen Shin-Kobe Station.

Official Instagram account: <https://www.instagram.com/hakkutsuya/>

Uzunokuni Minami-Awaji

MAP P38



Located on the hilltop overlooking the Naruto whirlpools, this is the complex of facilities of restaurant, souvenir shop, whirlpool science museum. At the souvenir shop, you will meet unique specialties of Awaji Island includes various kinds of Awaji Onion.

Hours: 9:00-17:00
Closed: Tuesday
Location: Fukurako 936-3, Minami-Awaji City
Access: 10mins from Fukura Port by car.
Official Website: <https://kinen.uzunokuni.com/>

KOBE-SANDA PREMIUM OUTLETS®

MAP P36

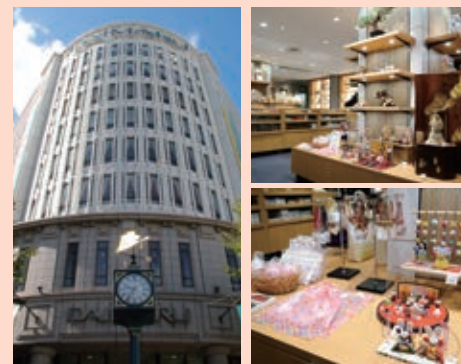


210 OUTLETSTORES
A sophisticated town modeled after Pasadena, a high-class residential suburb of Los Angeles. Visitors can enjoy shopping many international and Japanese brands.

Hours: 10:00AM-8:00PM
(Restaurants open until 9:00PM, Varies by season)
Closing Day: Once a year, on the third Thursday in February.
Official Website: <https://www.premiumoutlets.co.jp/en/kobesanda/>

Daimaru Kobe

MAP P34 E-3



Website: <https://www.daimaru.co.jp/kobe/>
Tel: 078-331-8121

Regular store hours: 10:00-20:00
Access: 3 minute walk from JR or Hanshin Motomachi station. In front of Subway Kyu-Kyoryuchi Daimaru-mae station.



umie Seria

MAP P33 F-1



Website: <https://umie.jp/shops/detail/2>
Tel: 078-371-3368
Hours: 10:00-21:00 Open year-round
Access: 5 minute walk from JR Kobe station

Promena KOBE Can★Do

MAP P33 F-1



Website: <http://www.promenakobe.com/portfolio-item/cando/>
Tel: 078-360-9955
Hours: 10:00-21:00 Open year-round
Access: 5 minute walk from JR Kobe station

Event Calendar

Seasonal and Historical Events in Hyogo



春 Spring

Cherry Blossom Viewing

There are many places around Hyogo where people can relish Japanese cherry blossoms. Himeji Castle, Akashi Park and Shukugawa Park were chosen as three of Japan's top 100 cherry blossoms viewing spots. The best season is late April, and even after full bloom, visitors can enjoy the beautiful shower of falling cherry petals. Some places offer lighting for night viewing.

How to get to Himeji Castle

15 minute walk from JR Sanyo line Himeji station.



夏 Summer

Minato-Kobe Firework Festival

This annual firework festival, held in Kobe, is one of the most anticipated events in the city. The contrast between the colorful fireworks with the beautiful night view of Kobe is spectacular. Fireworks can be seen from different spots around the area.

Access: 10 minute walk from JR Kobe station.

Top firework festivals in Hyogo

- Mid-summer Firework Festival (Himeji)
- Kinosaki Hot Springs Furusato Festival (Toyooka)
- Takarazuka Tourism Firework Festival (Takarazuka)
- Awaji Island Firework Festival (Awaji)
- Evening Festival of Ako (Ako)



秋 Fall

Autumn Foliage

Leaves changing color paint Hyogo's mountains beautifully. The colder it gets, the more colorful they become. Mt. Shosha is one of the finest spots for viewing maple leaves changing color. The temple opens important cultural properties to the public for the season so that visitors can explore both nature and the history of Hyogo.

How to get to Mt. Shosha (Himeji)

Take the Shinki Bus bound for Shosha Ropeway from JR Himeji station.



冬 Winter

Kobe Luminarie

Kobe Luminarie, the largest illumination festival in the country, is the most popular winter event in Kobe. There will be illuminations in Kitano-zaka area and Harbourland that are also very popular. Winter is the season when Kobe shines the most.

How to get to Harborland

10 minute walk from the east exit of JR/Hanshin Motomachi station.

January

- 1 Gencho-noh Okina Shinji Kasuga Shrine, Sasayama
- 2 Hot Spring Irizomeshiki Arima Hot Spring, Kobe
- 9-11 Toka Ebisu Festival Nishinomiya Shrine
- 17 Great Hanshin-Awaji Earthquake Gathering Higashi-yuenchi, Chuo-ku, Kobe



National Kite Festival



Toka Ebisu Festival



Chinese New Year

February

- Late January - February Kobe Nankinmachi New Year Festival Nankinmachi, Kobe
- 3 Daikakuji Setsubun Festival Daikakuji, Amagasaki
- Early February Hatsu-uma Festival Minatogawa Shrine, Kobe
- 11 Neriko Festival Sumoto-shi Yuraminato Shrine
- 17-18 Yakuyoke (expelling out evil) Festival Hachiman Shrine, Kaibara, Tamba
- Fourth Sunday World heritage Himeji Castle marathon

March

- Mid to Late March Uzushio (Whirlpool) Festival Minamiawaji
- Third Saturday Izushi Hatsu-uma Festival Around Izushi Castle Ruins, Toyooka
- First Sunday Sasayama ABC Marathon Sasayama Castle Ruins Marathon Course, Sasayama

April

- Early Himeji Castle Cherry Blossom Viewing Party Himeji Castle San-no-maru Hiroba
- Second Sunday Kawanishi-shi Genji Festival Kawanishi
- 23-24 Kinosaki Onsen Festival Toyooka
- Late April to Early May Infiorata Kobe Different places within Kobe
- Third Sunday Soba Eating Tournament Sogo Shisho-mae, Izushi, Toyooka



Himeji Castle Party



Infiorata Kobe



Soba Eating Tournament

May

- Third Sunday Kobe Festival Kobe
- Last weekend Aioi Peron Festival Aioi Port, Aioi
- Kobe Festival
- Aioi Peron Festival

June

- First Sunday Yumura Hot Springs Festival Shinonsen-cho
- 22-24 Himeji Yukata Festival Osakabe Shrine, Himeji

For further questions or comments

HYOGO TOURISM BUREAU
Available during the weekdays

TEL:078-361-7661 Hours: 9:00-17:30
https://www.travelhyogo.org, e.aas.hp.transer.com/
E-mail: info@hyogo-tourism.jp



July

- 15 Sento Festival Ikuta Shrine, Kobe
- Mid to Late July Sunflower Festival Nanko, Sayo-cho
- 10-11 Sosya Year of Abundance Summer Festival (Watae Shinji) Harima-no-kuni, Sosha, Himeji
- 24-25 Ieshima Tenjin Festival Ieshima Shrine, Himeji

August

- First Saturday Kobe Port Fireworks Festival Near Meriken Park, Chuo-ku, Kobe
- First Friday to Sunday Himeji Castle Festival Himeji Castle, Himeji
- Early August Awaji Island Festival Sumoto
- 8 Rakanji Sento-e Kasai
- 15-16 Dekansho Festival Sasayama
- Late August Otanigawa-noryo-toro-nagashi Kinosaki Hot Springs, Toyooka



Sunflower Festival



Kobe Firework Festival



Dekansho Festival

September

- Fourth Sunday Tajima Beef Festival Hyogo Prefectural Tajima Farm Park, Shinonsen-cho
- Lunar calendar 15 Aug Kobe-Nankinmachi Chushu-setsu Nankinmachi, Chuo-ku, Kobe
- Third Sunday Kotoshironushi Shrine Kotoshironushi Shrine, Awaji
- Mizukake Festival

October

- 14-15 Nada Kenka Matsuri Hachiman Shrine, Matsubara, Himeji
- Second Saturday-Sunday Kobe Jazz Street Kitano and other areas in Kobe
- Second Saturday-Monday Tamba Sasayama Flavor Festival Tamba, Sasayama, Ajimaturi
- Third Saturday-Sunday Oushiko Shrine Fall Festival Takasago
- Third Saturday-Sunday Tamba Tachiku Yaki Pottery Festival Sue-no-sato, Sasayama
- Nada Fighting Festival (October)
- Kobe Jazz Street
- Arima Tea Ceremony

November

- 2-3 Arima Tea Ceremony Arima Hot Spring, Kobe
- 3 Izushi Castle Festival Izushi, Toyooka
- First Saturday-Sunday Miki Hardware Festival Shiyakusho-mae, Miki
- 23 Opening of the Crab Kingdom In front of Kinosaki Onsen Station
- 23 Hyakkoku Dance Komasa-hachiman Shrine, Sanda
- Late November Kobe Marathon

December

- Early December Kasumi Crab Festival Kasumi-ku, Kami-cho
- 14 Ako Loyal Samurai Festival Ako
- Early to Mid-December Kobe Luminarie Kobe

Schedule may change without prior notice.
Check the schedule before attending the events.

Special Travel Passes

Travel Economically on JR

JR-West Rail Pass

Passes for short-term foreign travelers to Japan.

- [Kansai Area Pass] can be used on main railways in Kobe, Osaka, and Kyoto, Nara, Himeji and Wakayama. Unlimited access to Limited express train Haruka (non-reserved seats only) excluding the bullet trains.

- [Kansai Wide Area Pass] is providing 5 consecutive days of unlimited travel on designated JR trains (including unreserved seats on selected shinkansen and Limited express trains) in the Kansai region.

- [Sanyo-San'in Area Pass] gives you unlimited rides in Sanyo (Okayama, Hiroshima, Yamaguchi) and San'in (Tottori, Shimane) in addition to Kansai region.

For more information : <https://www.westjr.co.jp/global/en/ticket/pass/>

Japan Rail Pass

This pass offers unlimited travel on any JR train in the country. (There are some exceptions.)

For more information : <http://www.japanrailpass.net/>

Travel economically on lines other than JR

Kansai Thru Pass

This pass can be used on all the trains in Kansai region excluding JR lines.

For more information: http://www.surutto.com/tickets/kansai_thru_english.html

Kansai One Pass

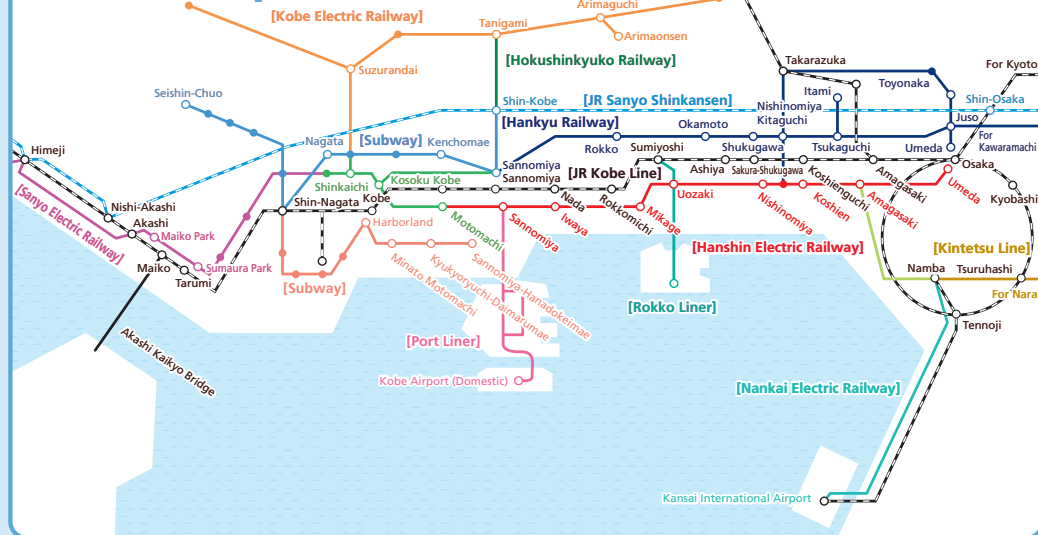
This pass can be used on all major public transit lines (JR & subway) in Kansai region.

For more information : http://kansaionepass.com/kf_pr/kf_pr_en.html



(c)Tezuka Productions

Route map



Transportation

There are many different types of public transportation, as well as tickets and passes available to tourists.

By using tourist passes, you can also receive discounts on your travel.

Information centers offer you route maps and timetables.

Kobe City Loop Bus

MAP P33,P34

The City Loop Bus will take you around all the main attractions. It takes 63

minutes to make one loop and connects 16 bus stops between Kobe Port and the Kitano Foreigners Residences. Videos are shown at the bus about each site. If you purchase a one-day pass, it will get you a discount at many tourist attractions.

A one day ticket comes with coupons for various tourist attractions.
 Fare: Adult ¥260, Child ¥130 (12 years and younger)
 One Day Pass: Adult ¥660, Child ¥330

Hours:
 •Weekdays:
 9:00 (Last bus leaves Kobe Port at 17:34)
 •Weekends and holidays:
 9:00 (Last bus leaves Kobe Port at 17:58)



Himeji Castle Loop Bus

MAP P35



This bus will take you on a ride to see the famous garden at a samurai's house, Koko-en; the Himeji City Museum of Art; Himeji Castle, and more.

- Get a discount by presenting your One Day Pass at Himeji Castle, Koko-en, the Himeji City Museum of Art and the Himeji City Museum of Literature.

*Cannot be combined with any other coupons or discounts

Fare: Adult ¥100, Child ¥50
 One-Day Pass: Adult ¥300, Child ¥150
 Hours: The bus operates daily between March and November, and between December and February, only on weekends and holidays.
 Weekdays:
 9:00 (Last bus leaves at 16:30)
 Weekends and holidays:
 9:00 (Last bus leaves at 17:00)

Bay Shuttle

MAP P32 B-4



The Bay Shuttle is a speed boat that connects Kobe Airport and Kansai International Airport in 30 minutes. If you're planning on heading to the central part of the city after getting off the boat, it's cheaper to purchase the Bay Shuttle ticket with a monorail Port Liner ticket.

Fare: One way : Adult ¥1,850, Child ¥930
 Round way: Adult ¥3,000, Child ¥1,500

Rent-a-Cycle

One of the easiest and affordable ways to explore the city is taking a ride around the city on a bike. There are even some places where you can rent bicycles for free. Please stop by information centers for more details.



Location	Where to Rent	Hours	Price
Kobe	Kobelin Port (15 ports in Kobe City; Please see the link below) https://www.kobelin.jp/pdf/i_en.pdf	24 hours	¥100/first 60 mins ¥100/each extra 30 mins ¥800/day
Himeji	Hime-chari (20 ports in Himeji City; Please see the link below) http://interstreet.jp/himeji/	7:00-20:00 (Returnable 24hr)	¥100/day
Kinosaki	Oyado-Annai Dokoro(Kinosaki Onsen Station)	9:00-17:00(Unavailable in rainy weather)	¥400/120min ¥800/day
Izushi	Izushi Karo Yashiki	9:30-17:00	¥300/120min ¥600/day
Ako	Ako Tourist Information Center (JR Bansyu-Ako Station 2F)	9:00-17:00	¥500/day
Iwaya (Awaji)	Iwaya Tourist Information Center	9:00-16:30	¥500/day
Sumoto(Awaji)	Sumoto Tourist Information Center	9:00-16:30	¥500/day
Minami Awaji(Awaji)	Minamiawaji Tourist Information Center	9:00-16:30	¥500/day

*ID and a deposit or advance payment might be required.

i Information Center

We are here for everything you need to get the best from your visit to Hyogo. Feel free to contact us at any time.

HYOGO TOURISM BUREAU

*Please be advised that we accept phone calls only during weekdays.

Website <https://www.travelhyogo.org.e.as.hp.transer.com/>

Tel 078-361-7661 **Hours** 9:00-17:30 **E-mail** info@hyogo-tourism.jp



Kobe Information Center



(MAP P34 E-4)

Tel 078-322-0220
Website <http://hello-kobe.com>
Location The south of JR Sannomiya Station/ the east exit of Hankyu Sannomiya Station.
Hours 9:00-19:00



Shin-Kobe Station Tourism Information Desk



(MAP P34 D-4)

Tel 078-241-9550
Location JR Shin-Kobe Station
Hours 9:00-18:00

Arima Onsen Tourism Information Center



(MAP P37)

Tel 078-904-0708
Website <http://www.arima-onsen.com>
Location Arima Onsen bus stop
Hours 9:30-17:00



Kinosaki Onsen Tourism Association



(MAP P37)

Tel 0796-32-3663
Website <http://www.kinosaki-spa.gr.jp>
Location Kinosaki Literature Hall. 5 minute walk from JR Kinosaki Onsen Station.
Hours 9:00-17:00 Open year-round

Himeji Kanko Naviport (Tourist Information Center)



(MAP P35)

Tel 079-287-0003
Website <http://www.himeji-kanko.jp>
Location West side of JR Himeji Station central concourse
Hours 9:00-19:00 (Closed on 12/29-12/30)



Sumoto Tourism Information Center (Awaji)



(MAP P38)

Tel 0799-22-0742
Website <http://www.awajishima-kanko.jp>
Location Inside Sumoto Bus Center
Hours 9:00-17:00



Kitano Tourism Information Center



(MAP P34 D-4)

Tel 078-251-8360
Website <http://kobeguide.o.oo7.jp>
Location Kitano Kazamidori-no-yakata (Weathercock House)
Hours April to November 9:00-18:00/December to March 9:00-17:00



Others

Takarazuka City International Tourism Association
<http://www.kanko-takarazuka.jp/>

Ako Tourism Association
<http://www.ako-kankou.jp/>

Sasayama Tourism Information Center
<http://tourism.sasayama.jp/>

Airports

Kansai International Airport
 Tel: 072-455-2500

Osaka International Airport Information Center
 Tel: 06-6856-6781

Kobe Airport Information Center
 Tel: 078-304-7777

Tajima Airport
 Tel: 0796-26-1507

For further assistance

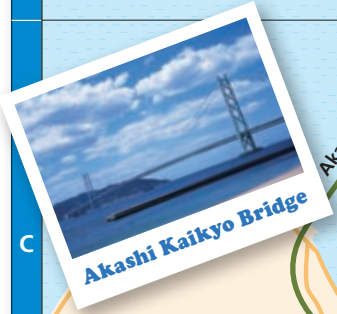
Hyogo International Association Information and Advisory Center
 (Information for hospitals and medicals available in foreign languages)
 Tel: 078-382-2052

Hyogo Map

Hyogo Prefecture



Map





Himeji



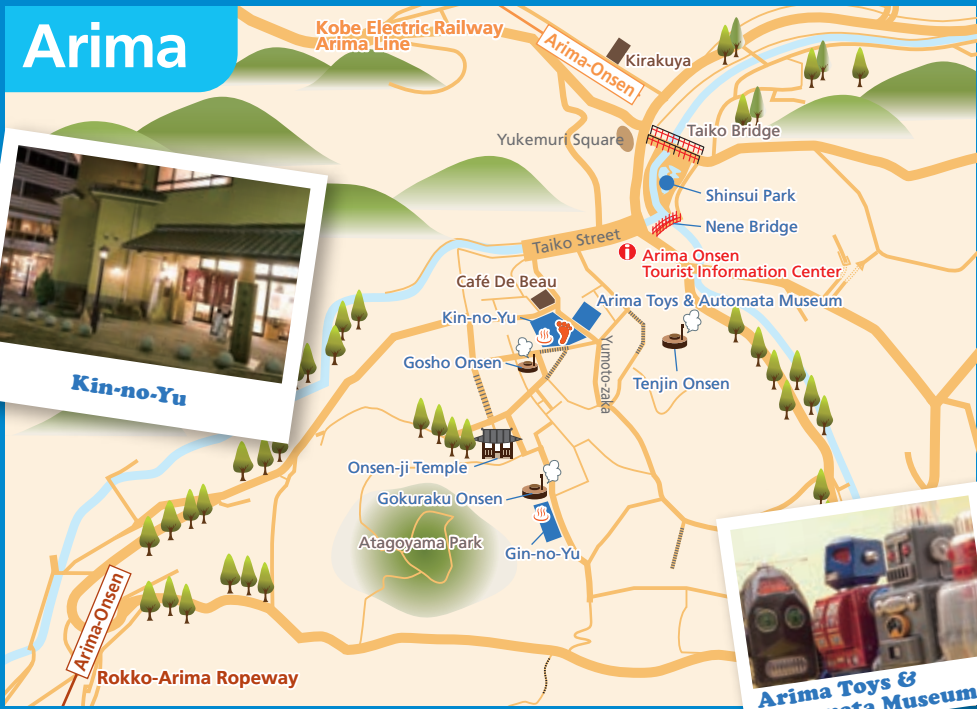
Tamba-Sasayama



Nada Sake Breweries



Arima



Awaji



Kinosaki





Himeji Castle



Hyogo Maiko Park



Anko-zenji Temple



Kinosaki Onsen Town

Hyogo Prefecture is located in the center of Japan, where the 135th meridian east and the 35th parallel north intersect, the point that is the basis for Japan Standard Time.

Access

- ◆ Kansai International Airport**

By Train: Kansai International Airport to JR Sannomiya Station: approx. 1 hr 30 mins
 By Limousine Bus: Kansai International Airport to Sannomiya: approx. 1 hr 20 mins
 By High-speed Ferry: Kansai International Airport to Kobe Airport: 30 mins
- ◆ By Shinkansen**

Tokyo Station to Shin-Kobe Station: approx. 2 hrs 45 mins
 Tokyo Station to Himeji Station: approx. 3 hrs 5 mins
- ◆ By Plane**

Haneda Airport to Osaka International Airport: approx. 1 hr 30 mins
 Haneda Airport to Kobe Airport: approx. 1 hr 20 mins

*Travel times may vary depending on the day and train service used. Charges of train may be required on route.

Hyogo Tourism Bureau