

Mapping and Spatial Analysis of an Ancient Capital in Southern Mexico

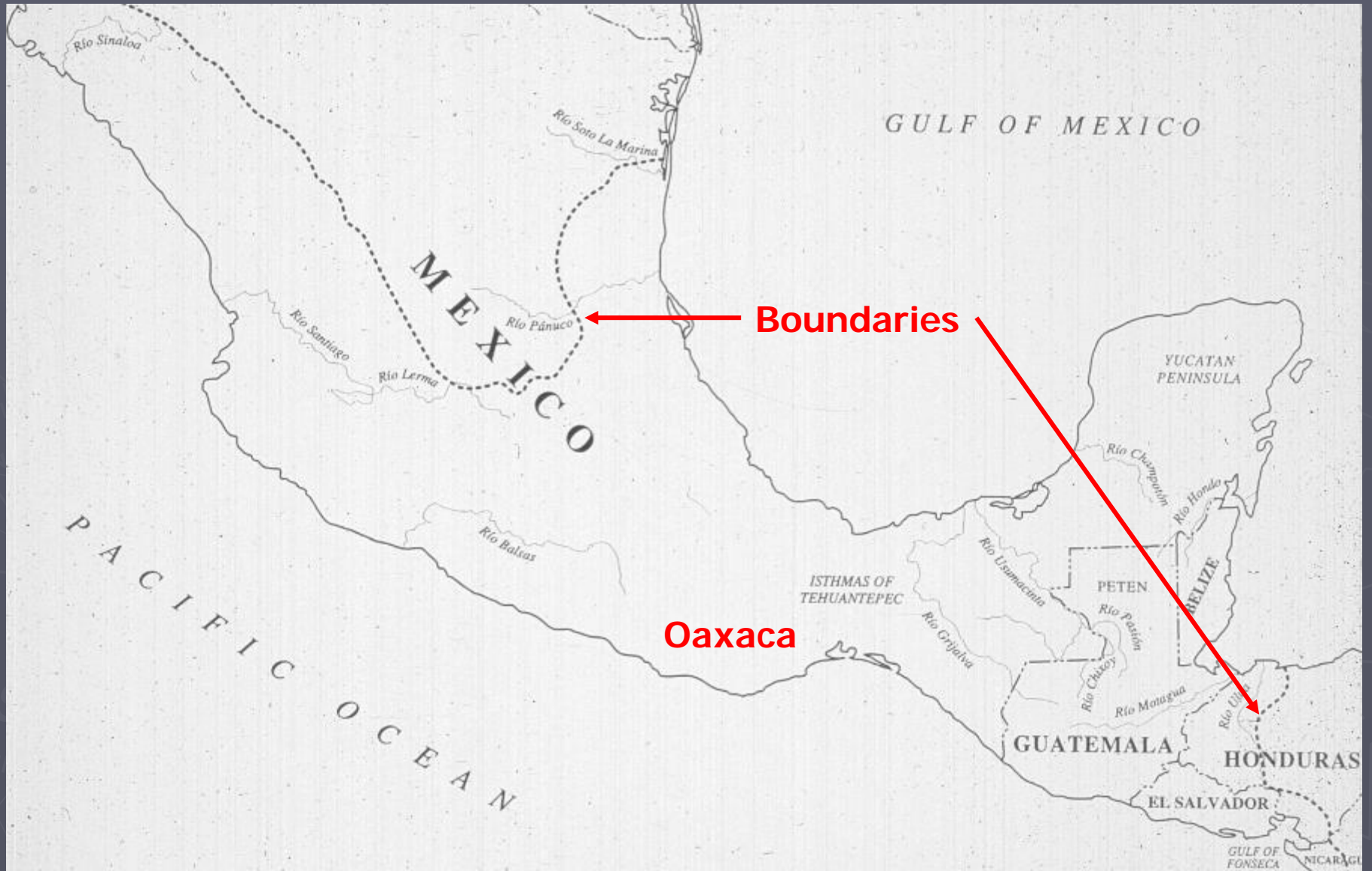


Stephen L. Whittington
Executive Director

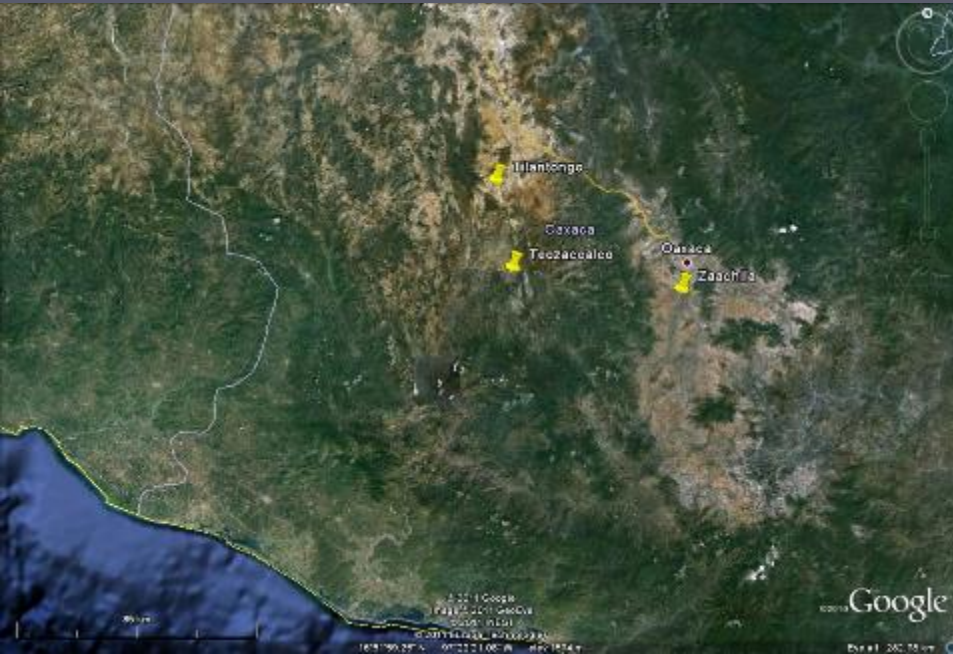


NATIONAL MINING
HALL OF FAME
AND MUSEUM

Mesoamerica

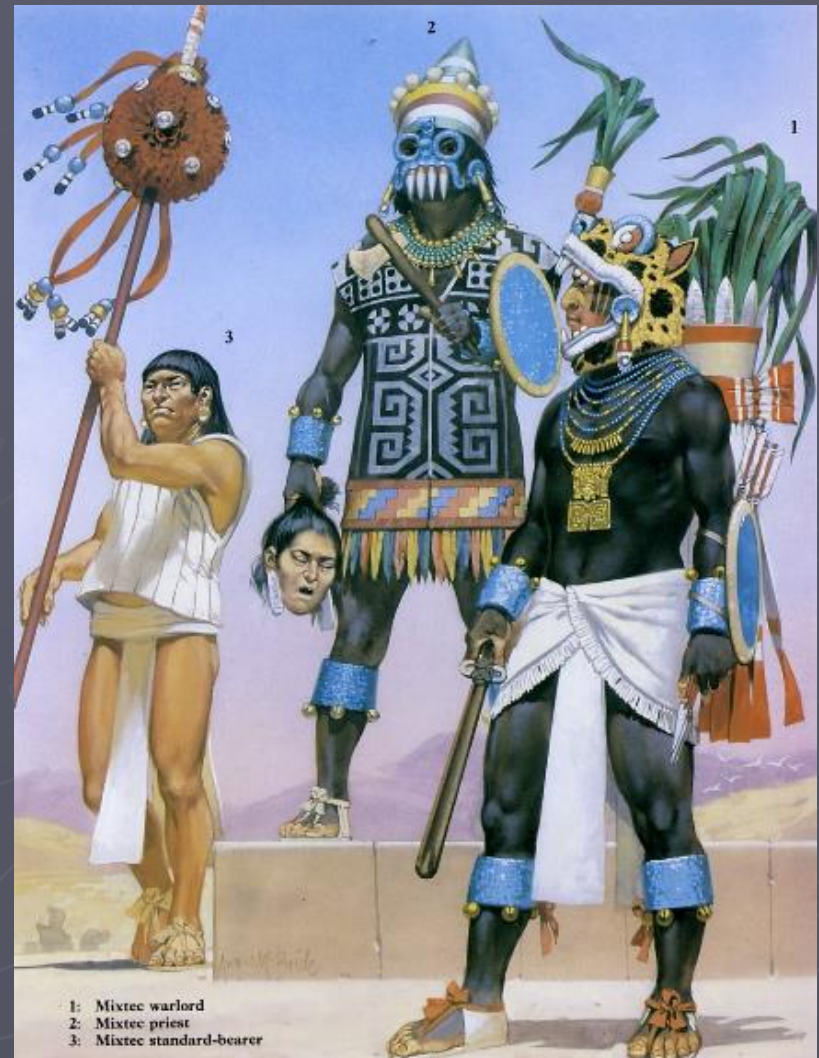
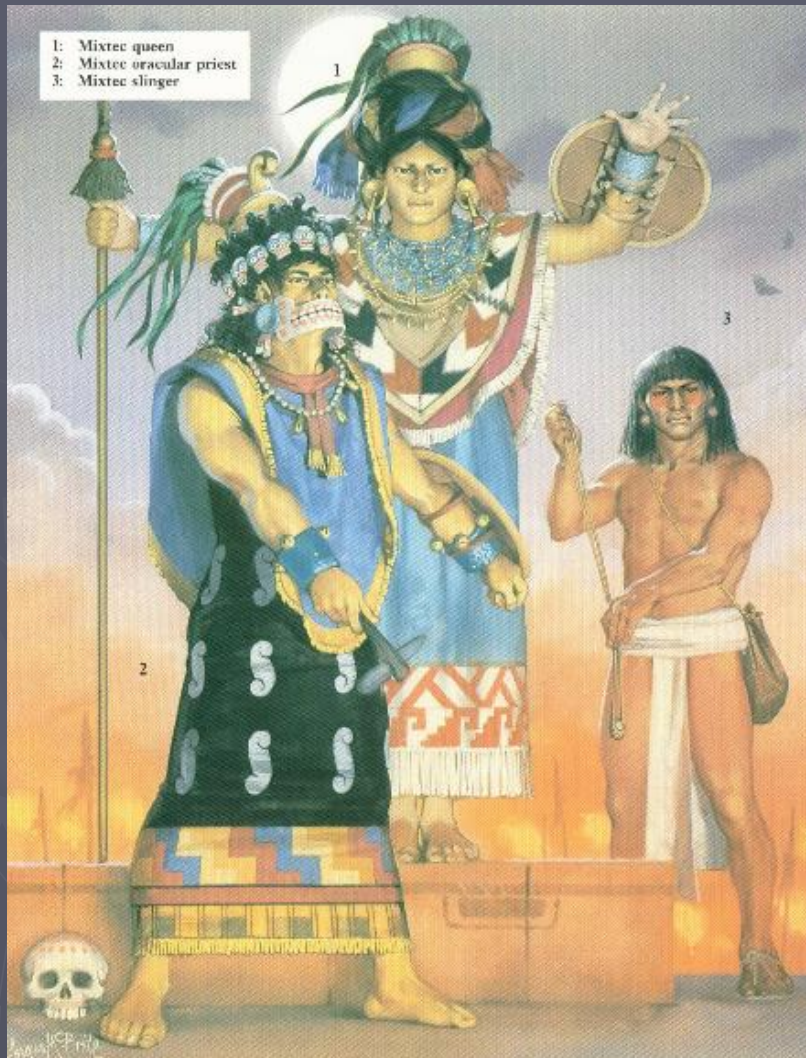


La Mixteca



The Mixtec Kings and Their People,
Ronald Spores

Mixtec Culture (ñuu savi)



Codices = Screen-Fold Books



The Codex Nuttall, edited by Zelia Nuttall

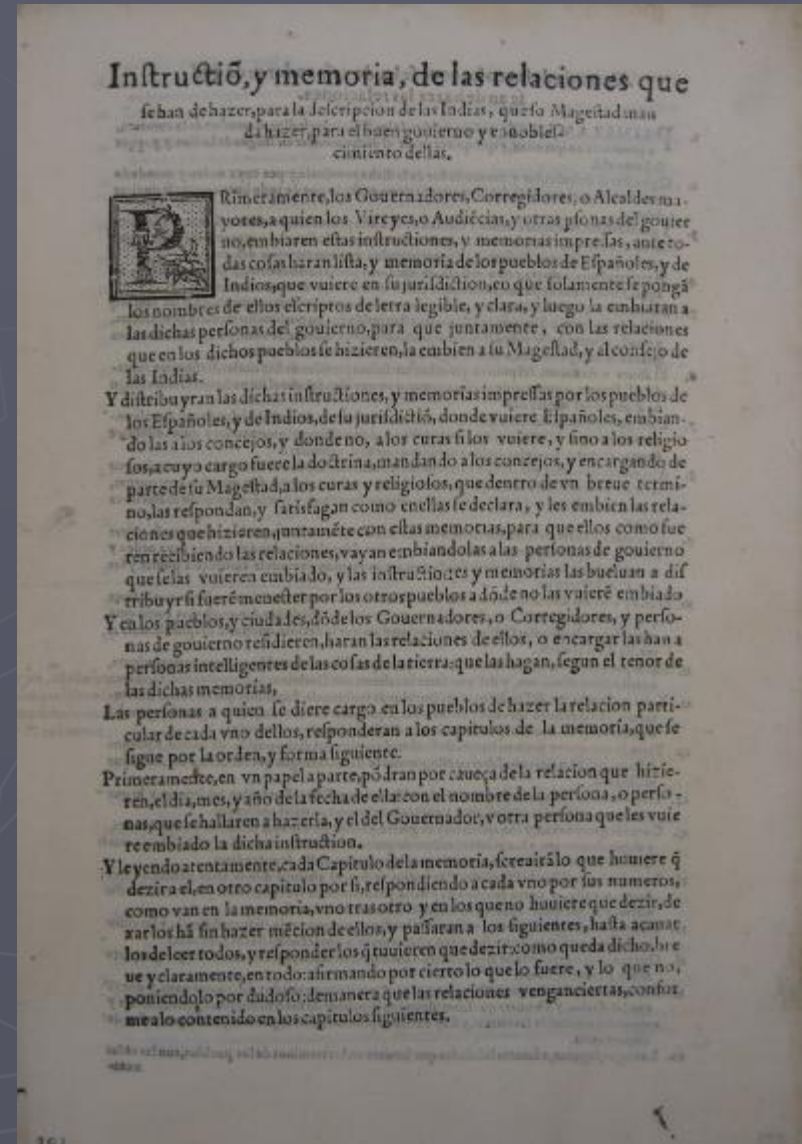
Spanish Conquest (starting in 1520s)



Aztecs and Conquistadores, John Pohl and Charles M. Robinson III

Relaciones Geográficas

- ▶ The Viceroy of New Spain sent all municipalities 50 questions on behalf of King Felipe II in 1577
- ▶ Question 10: "Make a map of the layout of the town, its streets, plazas, and other features, noting monasteries, as well as can be sketched easily on paper."



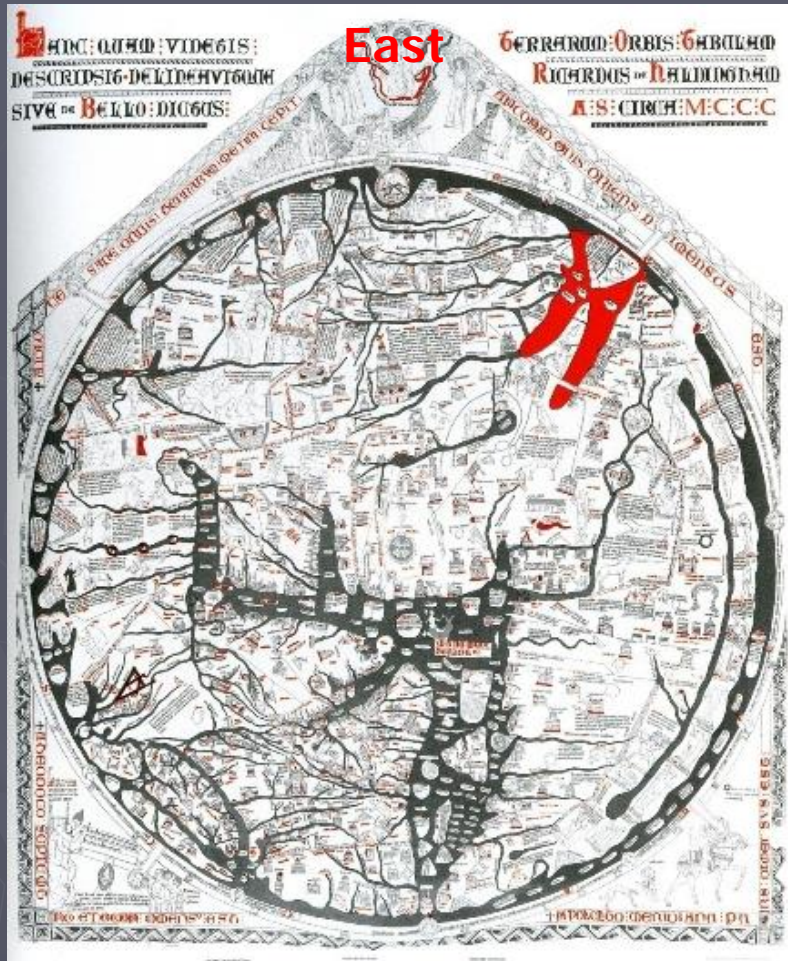
Mapa de Teozacoasco



138 cm

176 cm

Mappa Mundi

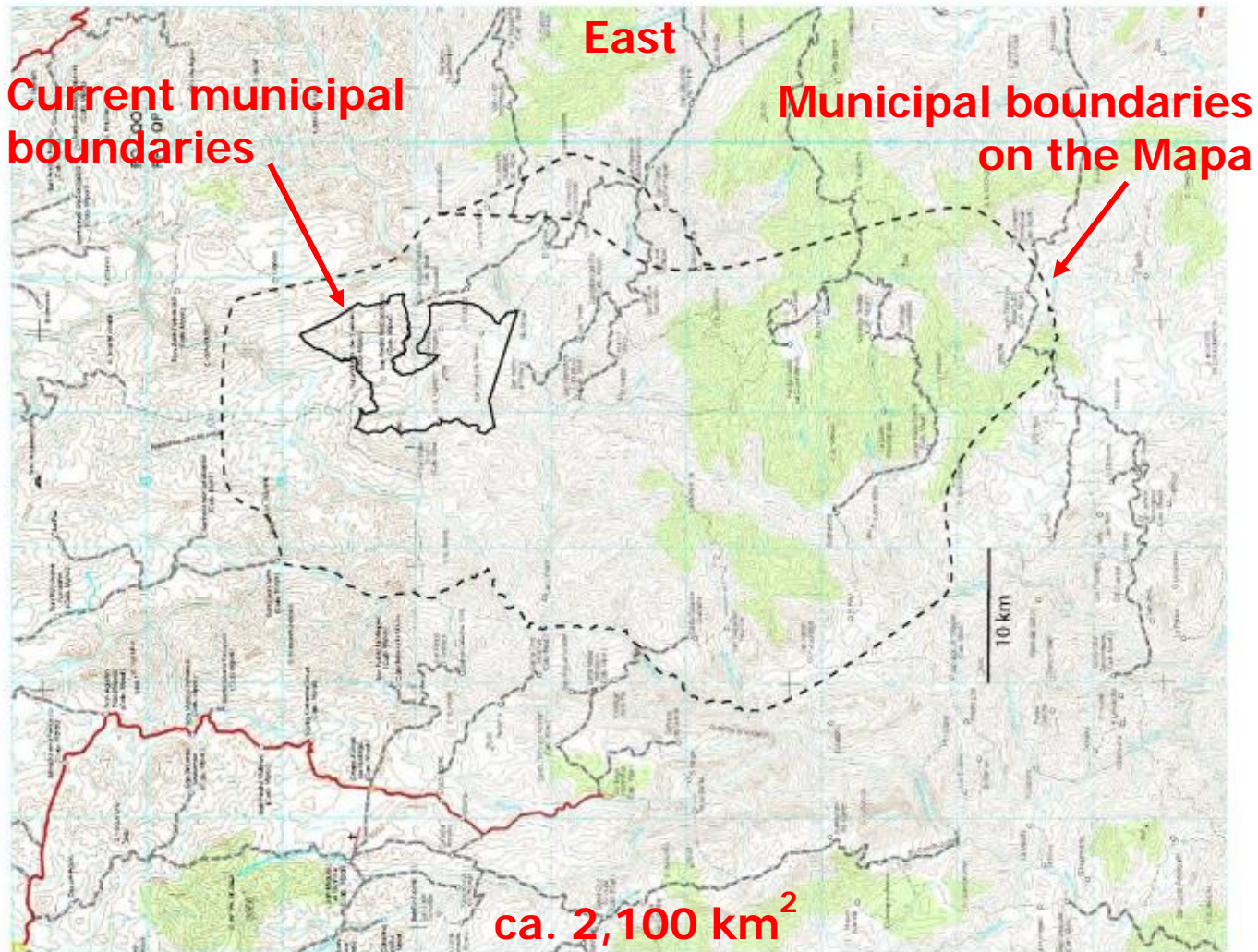


Hereford (ca. 1300)



Tezacoalco (ca. 1574-1576)

Teozacoasco



Dynasties



"These are the important people and lords who, formerly, came from the village of Tilantongo for this one of Teozacualco."



Teozacoalco



Tilantongo



Logograph



Chiyo Cahnu

San Pedro Teozacoasco



"This is the capital of the magistracy and church of the village of Teozacualco, called San Pedro."

Peña Colorada

San Pedro Teozacoasco



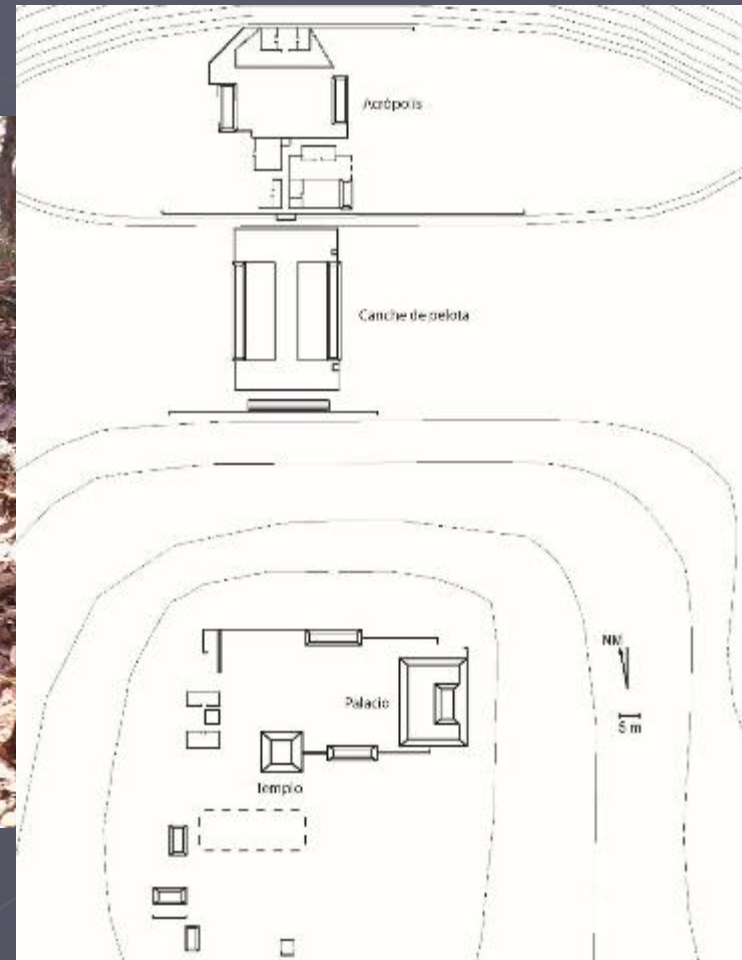
Cerro Amole



The Climb



Cerro Amole



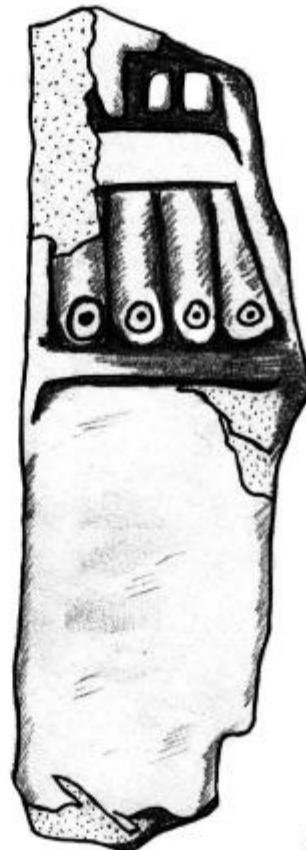
Ball Court



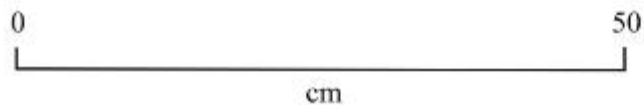
Ball Court Sculpture



Derecha



Atrás



San Pedro Teozacoalco
Cerro Amole
Juego de Pelota
Bloque grabado 2 b
Dibujó: José Leonardo López Zárate
Digitalizó: Ismael G. Vicente Cruz
Escala 1:50

Temple Pyramid



Palace



Ancient Road



Terro Lazmín





Proyecto Arqueológico Cerro Jazmín

Urbanismo prehispánico y su impacto ambiental

Temporada 2013



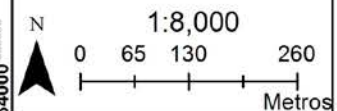
Localización

Simbología

- Camino
- Lamabordos
- Accesos
- Alineamientos
- Muros
- Terrazas
- Estructuras
- Plataformas
- Patios

Altitud

- 2492msnm
- 2181msnm



Especificaciones cartográficas:

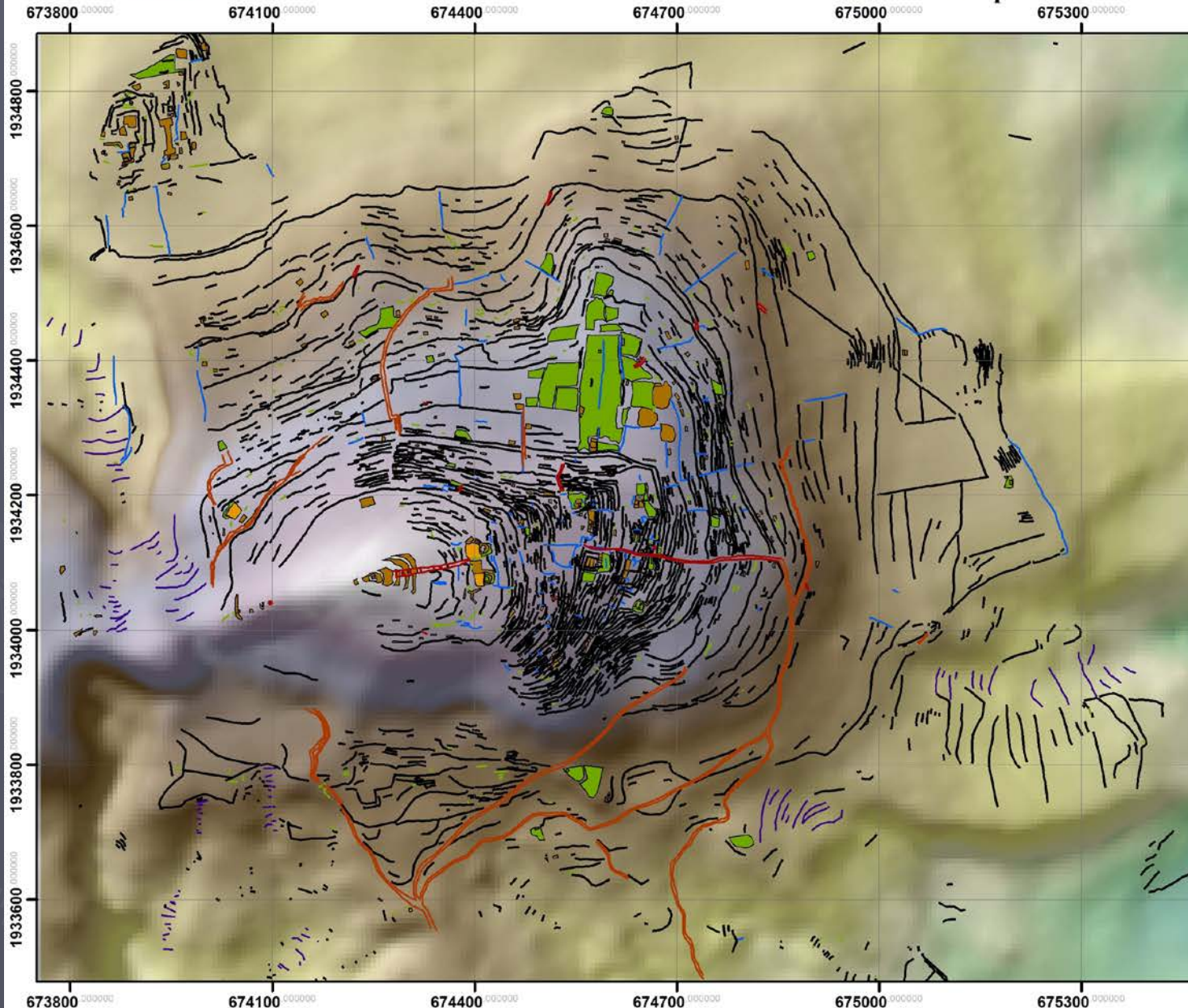
Proyección: UTM
Datum: WGS84 Zona 14N

Elaboración:

Antonio Martínez Tuñón
Octubre 2013

MAPA 1

Mapa general del sitio



2013-2017



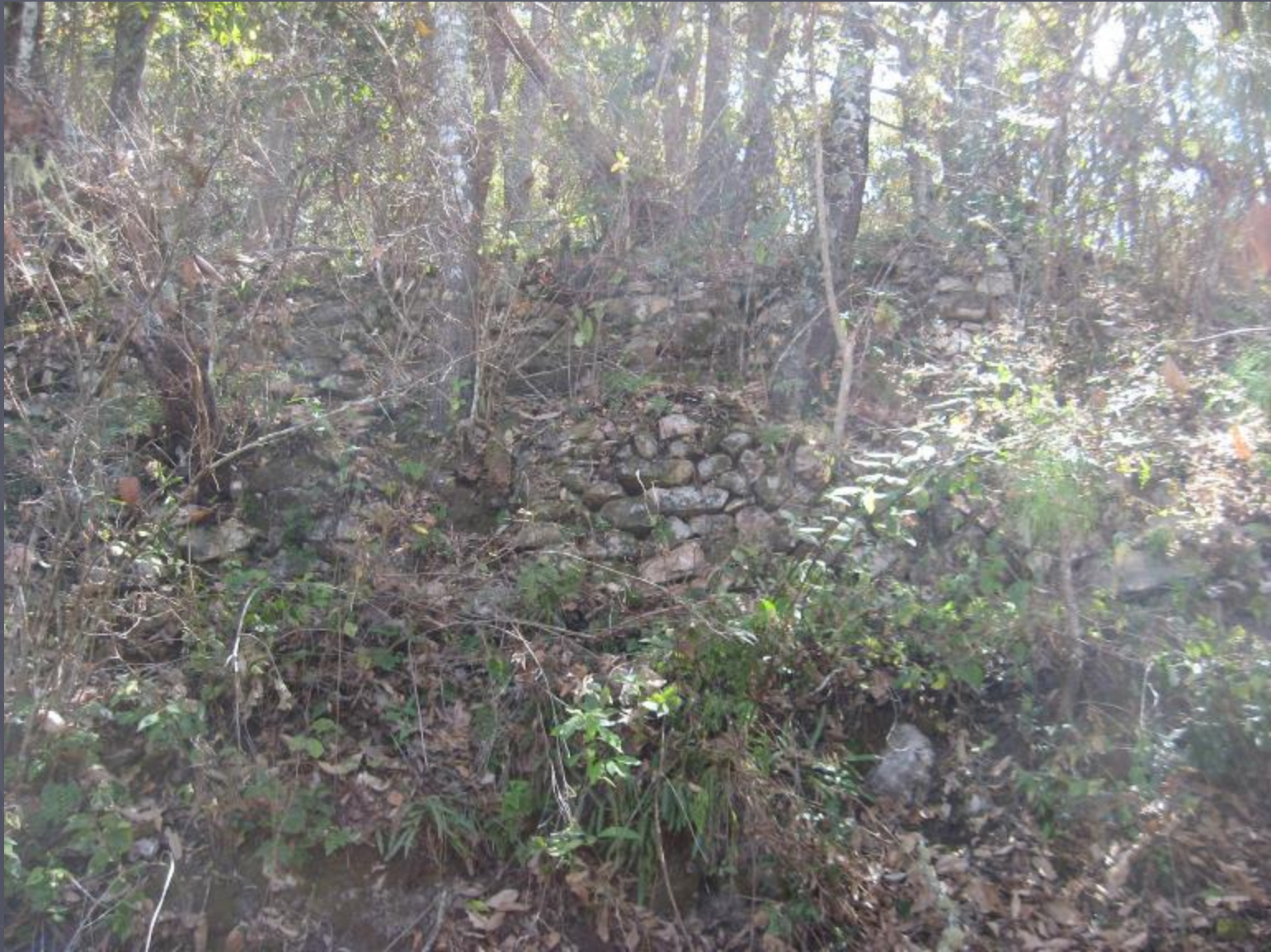
Steep, Overgrown Slopes



Terrace



Lots of Terraces



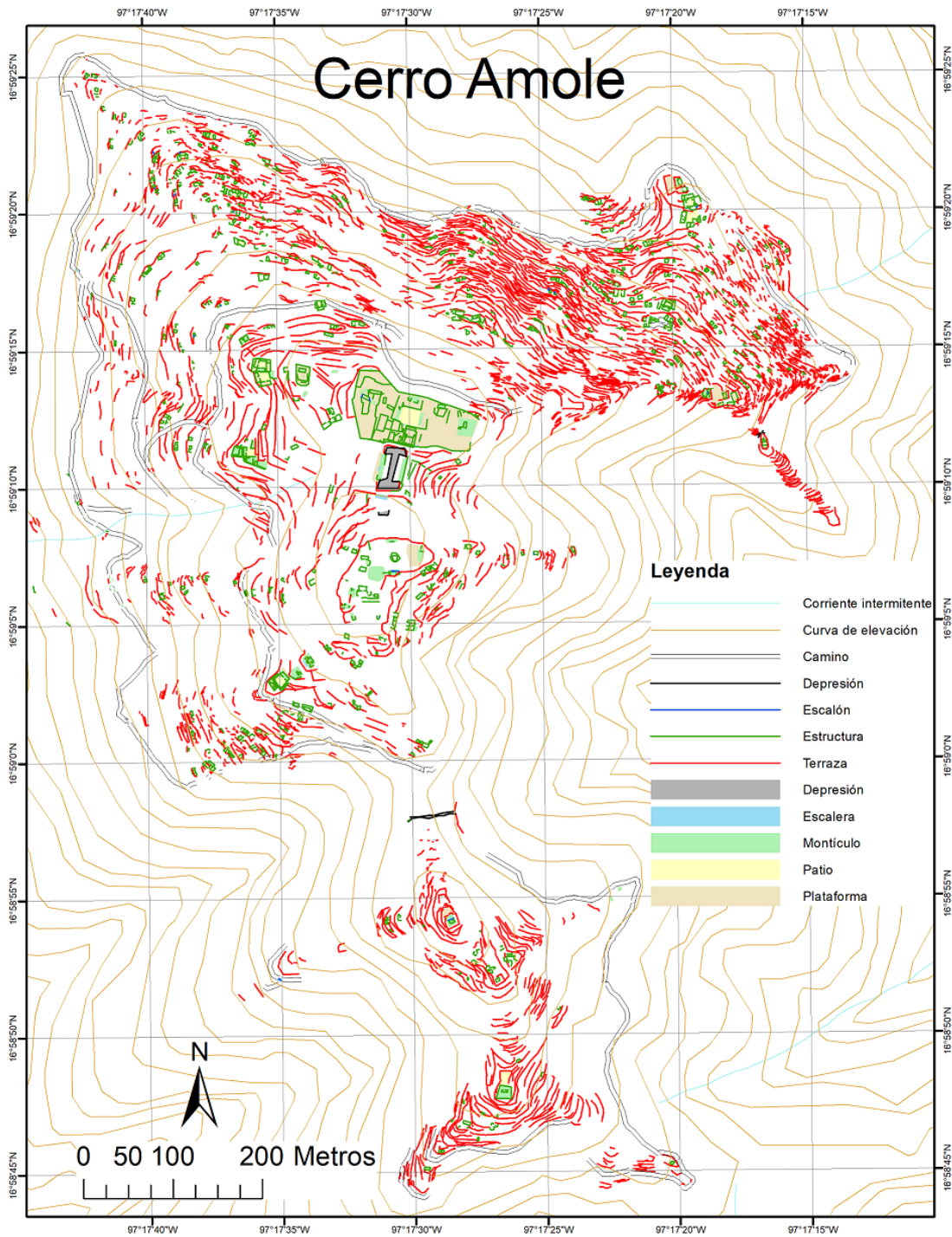
Control Point on Road



Temple



Cerro Amole



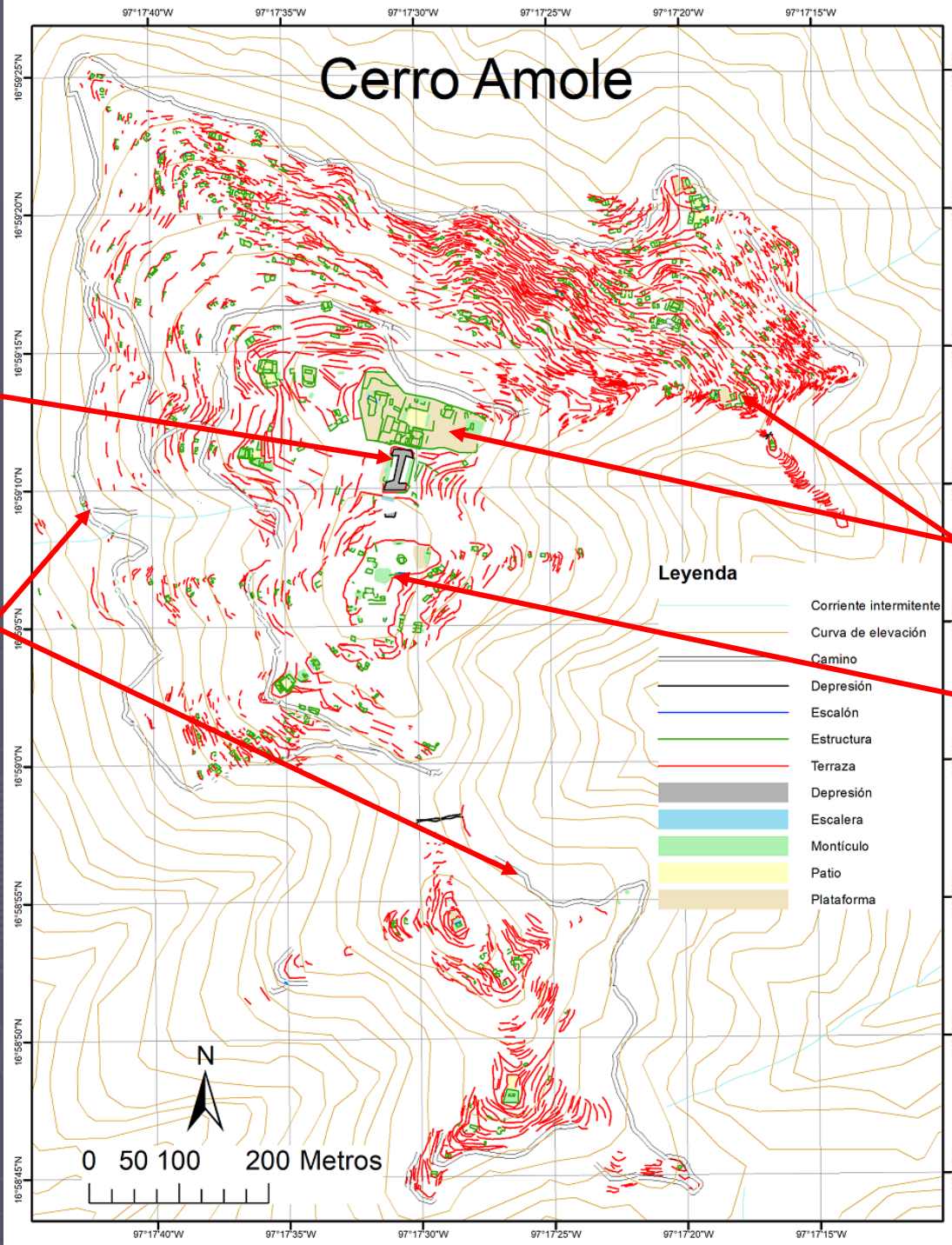
Cerro Amole

Ball court

Roadways

Platforms

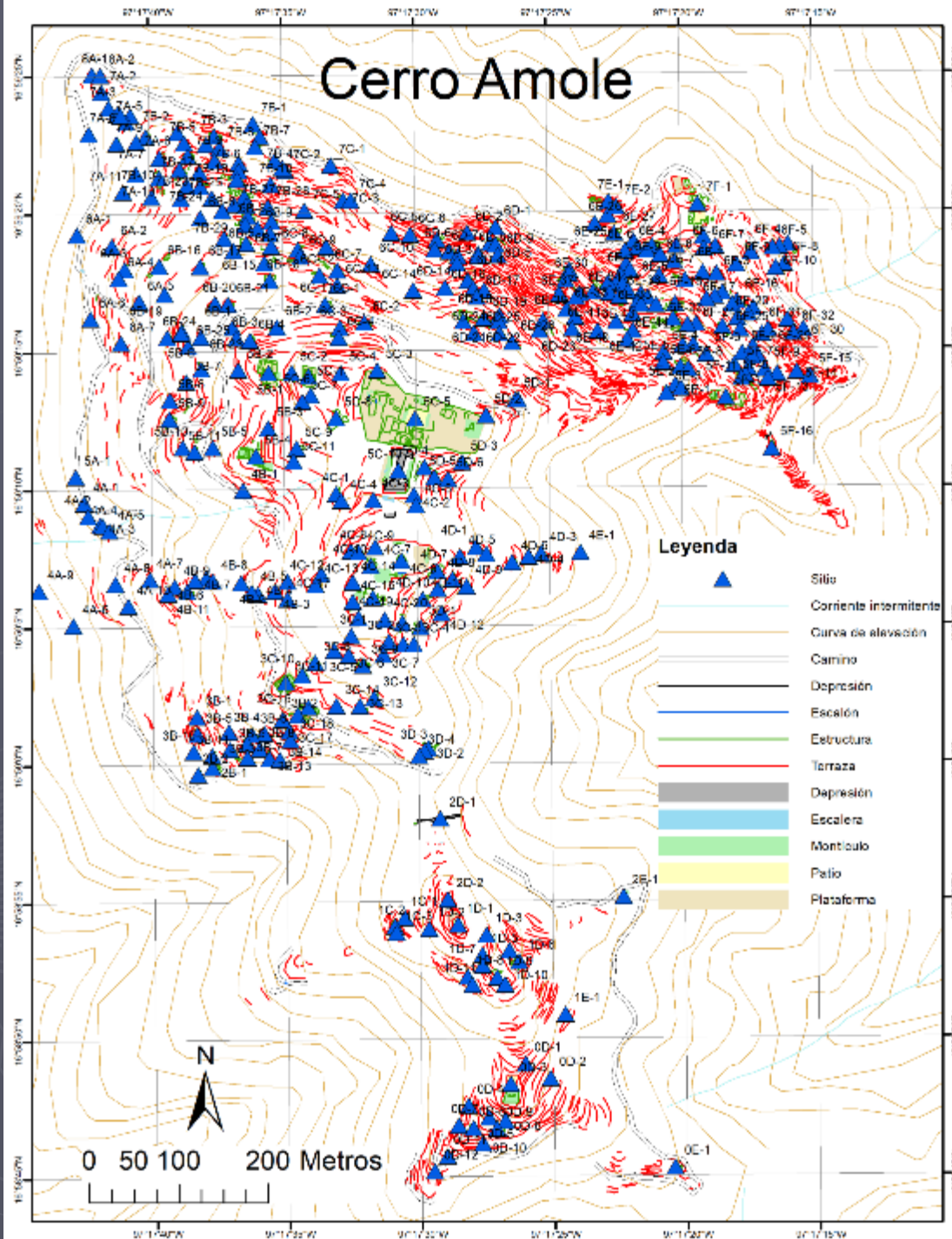
Pyramid



Residential Group



Ca. 370
building sites

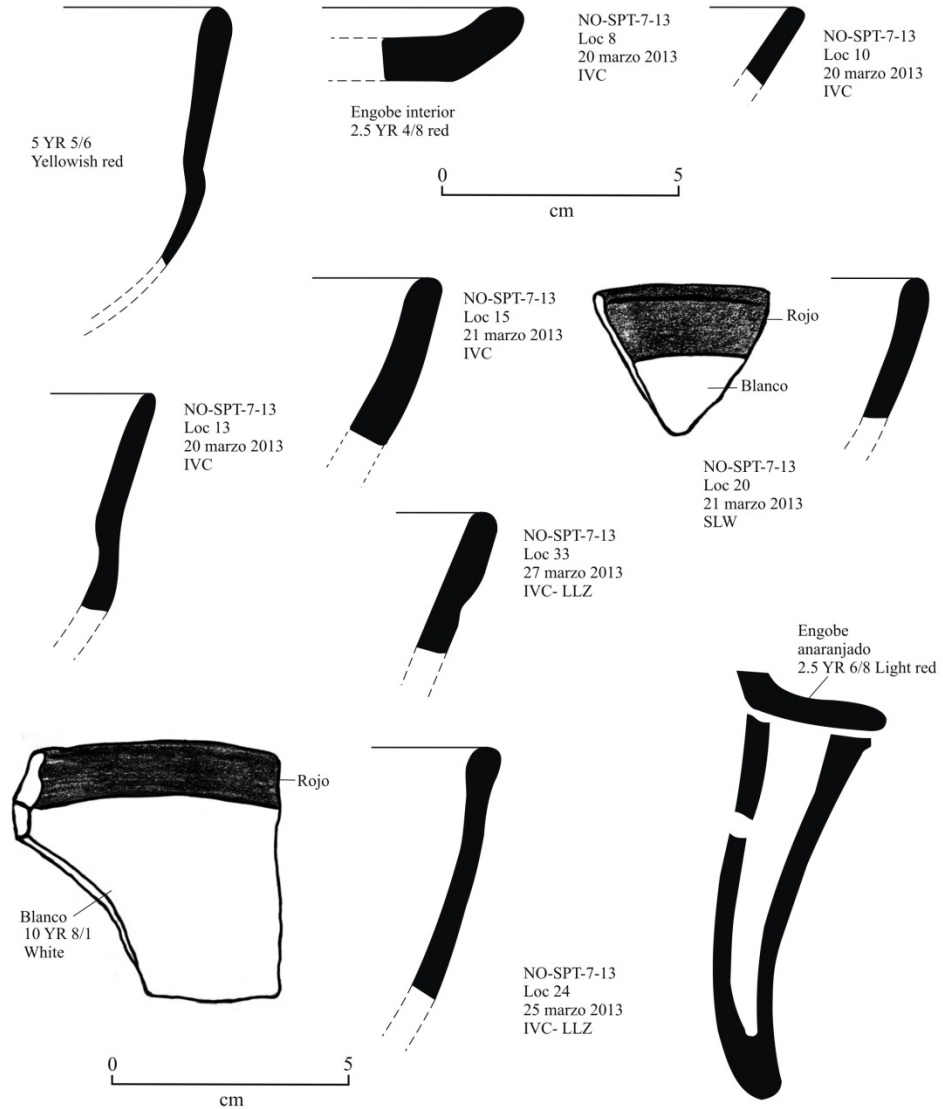


Ca. 2,400
terraces

Possible Burial



Ceramics

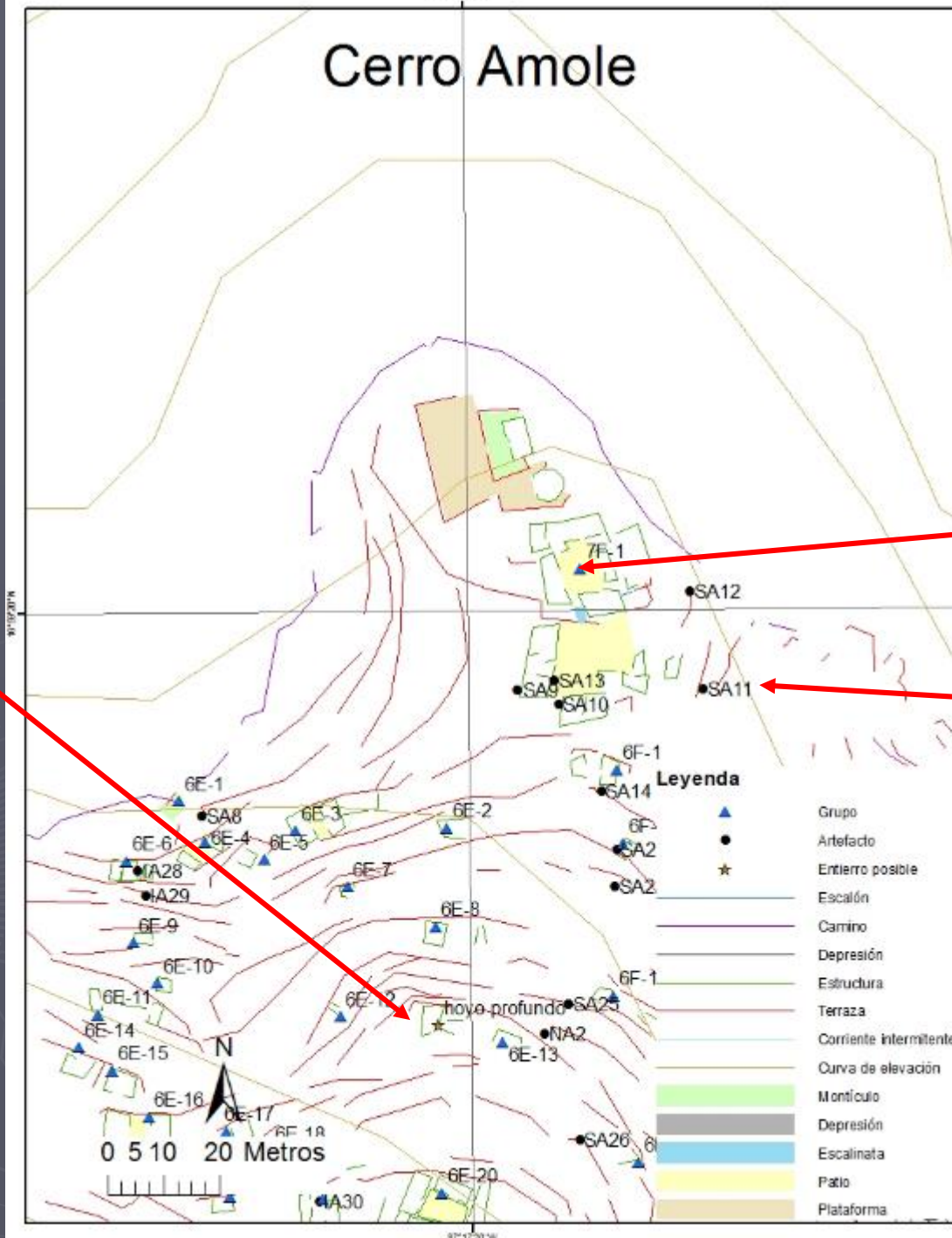


Cerro Amole

Possible burial

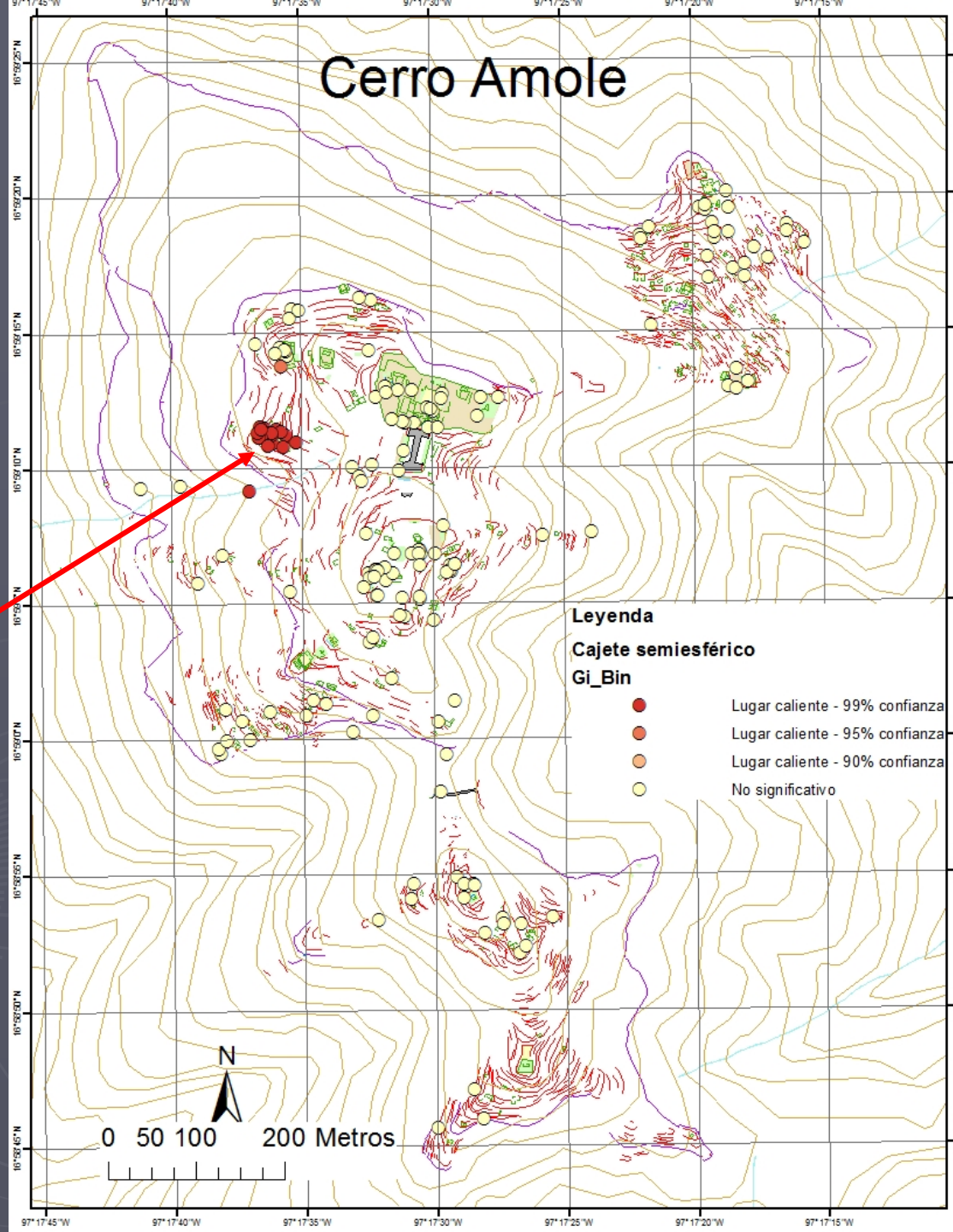
Residential group

Artifact



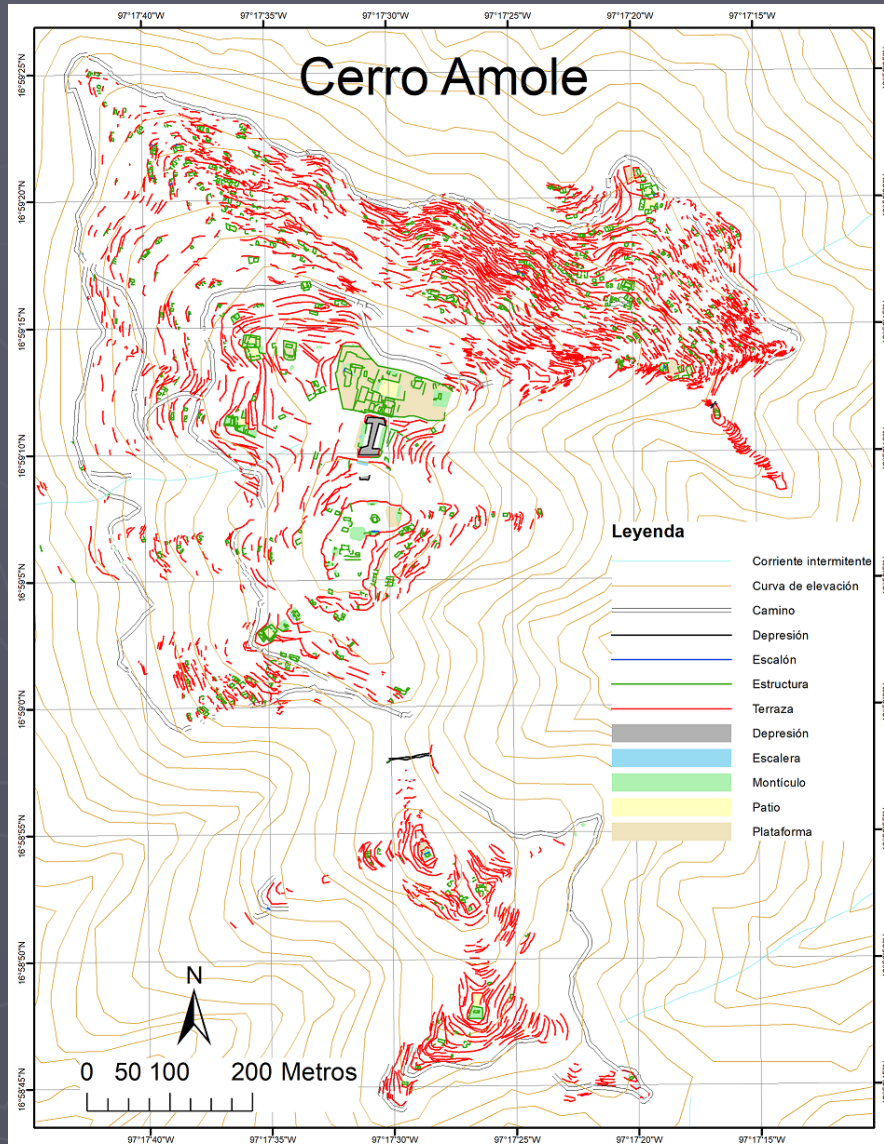
Cerro Amole

Hot spots

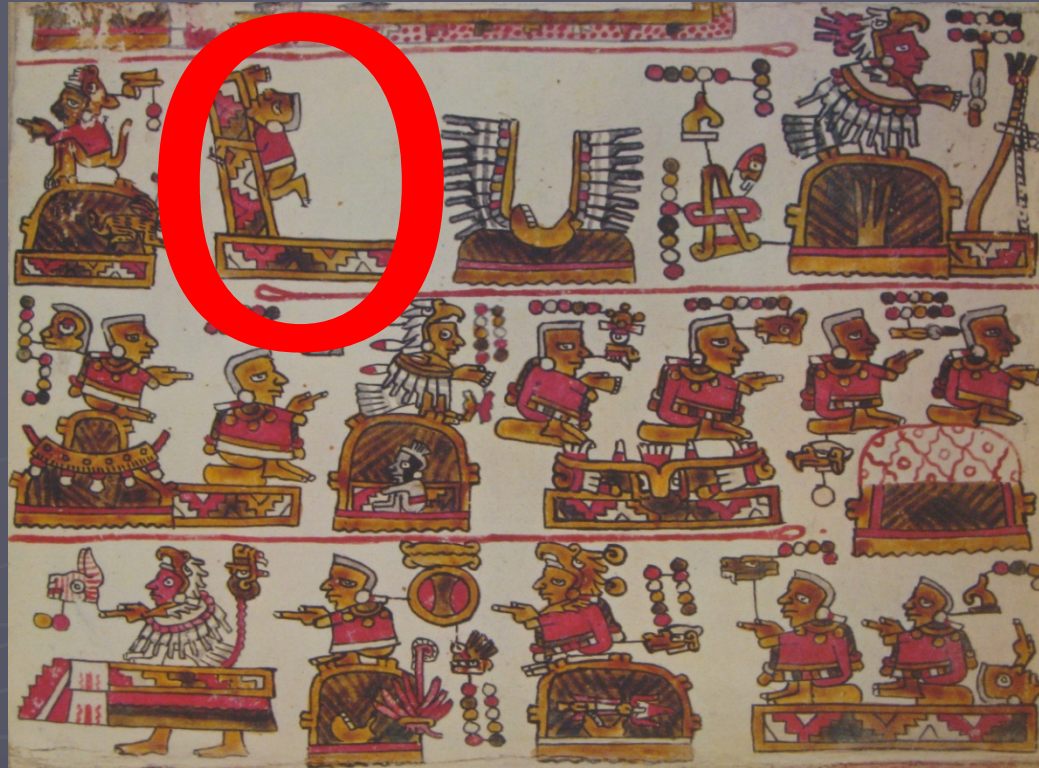


Based on the
Getis-Ord-Gi*
statistic with
incident points

What's It Mean?



Teozacoasco



Interpretación del Códice Selden 3135, Alfonso Caso

**Chiyo Cahnu had no ruler around 1030
when Lord 10 Reed (ruler of Topiltepec) visited**

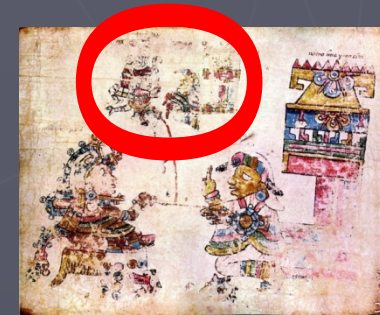
Dynasty 1

Lord 5 Dog: 2nd son of the ruler of Tiger City

Lady 6 Wind: from Tilantongo



Codex Nuttall



Inhaltliche Analyse und Interpretation von Codex Egerton, Viola König

Lord 5 Dog and
Lady 6 Wind
Married in 1085



Dynasty 3

Lord 2 Dog: from Zaachila
Lady 6 Reed: from Tilantongo
Took possession of Teozacoalco in 1321

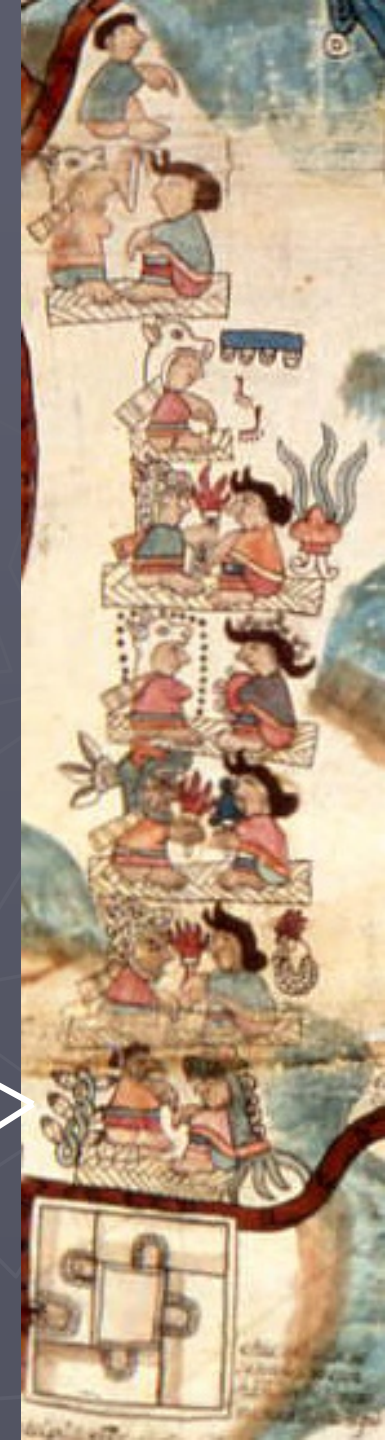


Codex Bodley, Maarten Jansen and Gabina Aurora Pérez Jiménez



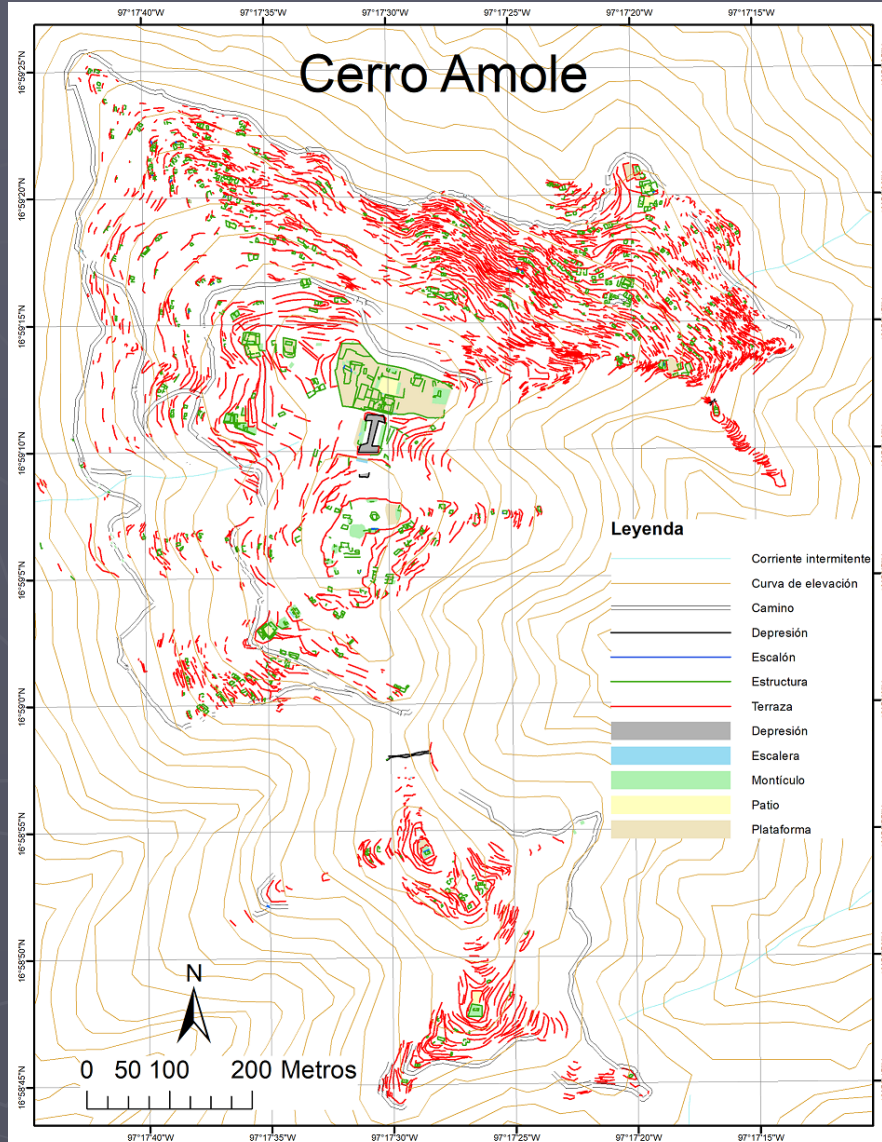
Codex Nuttall

**Appear a second time on the Mapa
seated atop the palace in San Pedro
Teozacoalco**



Built in 236 Years (AD 1085-1321)

Ca. 370
building sites



Ca. 2,400
terraces

Acknowledgements

Teozacoalco images used with permission of
Nettie Lee Benson Latin American Collection, University of Texas
Libraries, The University of Texas at Austin

Cerro Jazmín map used with permission of
Proyecto Arqueológico Cerro Jazmín

Many thanks to
Patterson Foundation
Mudge Foundation
Foundation for the Advancement of Mesoamerican Studies, Inc.
Citizens of San Pedro Teozacoalco
Consejo de Arqueología, INAH