

Visit Maasmechelen

TOURISM
BROCHURE

VISITMAASMECHELEN.COM  



Index

National Parc Hoge Kempen	7
9 entrance gates	9
Entrance gate Terhills	10
Entrance gate Mechelse Heide	12
Terhills	17
Rivierpark Maasvallei	23
Gems of villages – Castle Vilain XIII	24
Legends alongside the Meuse	27
Walking on high-level	28
Set off with the Meuse Explorers	28
Ferry boats	29
Tuinwijk & mining history	31
Eisden Tuinwijk	32
<i>Blog 'The Stories behind the facades of the Eisdense Tuinwijk'</i>	35
Heritage	38
Recreatie	41
Cycling & mountainbiking	42
<i>Blog 'Inspiration route'</i>	44
Indoor activities	46
Outdoor activities	48
Activities with children	50
<i>Blog 'Children's adventures'</i>	52
Fashionable shopping	55
To dine & stay	59
At the table!	60
Have a good night...	62
In the Euregion	67
Visit Maasmechelen	71

Colophon

Responsible publisher: Gemeente Maasmechelen

Concept and lay-out: Imagica.be

Printing: Realise Printing

Photography: Frank Ressler, Visit Limburg, Peter Baas, Visit Maasmechelen, RLKM vzw, Philippe Van Gelooven, Tom Ramaekers, Terhills, Elaisa Wellness, The Bakery by Panerex, Rudi Van Beek, Sabrina Tollenaers, Nico Vrancken, Openkerken, Kijkkerk, CC Maasmechelen, Camping Kikmolen, Bart Heirweg, stad Hasselt, Sandra Pardaen, Shutterstock.

Copywriting: Leen Raats, redactie bureau Palindroom

Translation: Nadine Bangels, Language-World



This brochure is an edition of the municipality of Maasmechelen and was composed with utmost care. Possible inaccuracies and/or changes do not engage the responsibility of the municipality of Maasmechelen.





Dear reader

With RivierPark Maasvallei on one side and Hoge Kempen National Park on the other, Maasmechelen is the ideal destination for a weekend away!

Discover the most beautiful panoramic view in Flanders and the purple heathland via the entrances to Hoge Kempen National Park, go for a wonderful bicycle ride via the extensive cycling route network, explore the Meuse valley in a kayak, go shopping at Maasmechelen Village, M2 Shopping Center or one of the many local stores, dive into culture and history at Eisdenduin Tuinwijk, wine and dine at one of the numerous hospitable restaurants, relax during a day at the brand-new Elaisa Wellness... You name it, Maasmechelen has it!

In the meantime, we haven't been sitting around doing nothing. Maasmechelen is always moving forward. Last summer, 'Cycling through the Heath' was launched, a unique cycling route with an iconic bridge as the icing on the cake. Further, RivierPark Maasvallei is being developed. Castle Vilain XIII at Leut was bought by Toerisme Vlaanderen last year. In the years to come, it will be used in a fitting way and will help the surrounding area to flourish. Next, in 2022/2023, Kunst aan de Maas (Art by the Meuse river) by Z33 will take shape. Each Meuse municipality in Limburg will be enriched by an art project of (inter)national allure. Finally, in the future, we expect to rehouse the National Park Visitor Center in the renewed mine shaft on the Terhills site. We look forward to welcome you to our municipality!

This tourist brochure gives you an overview of everything our beautiful Maasmechelen has to offer. You will soon realise: you just have to experience Maasmechelen!

#maasmechelen #visitmaasmechelen #MMmeemaken



Herbert Coox
Alderman of Tourism



Raf Terwingen
Mayor Maasmechelen



National Parc Hoge Kempen

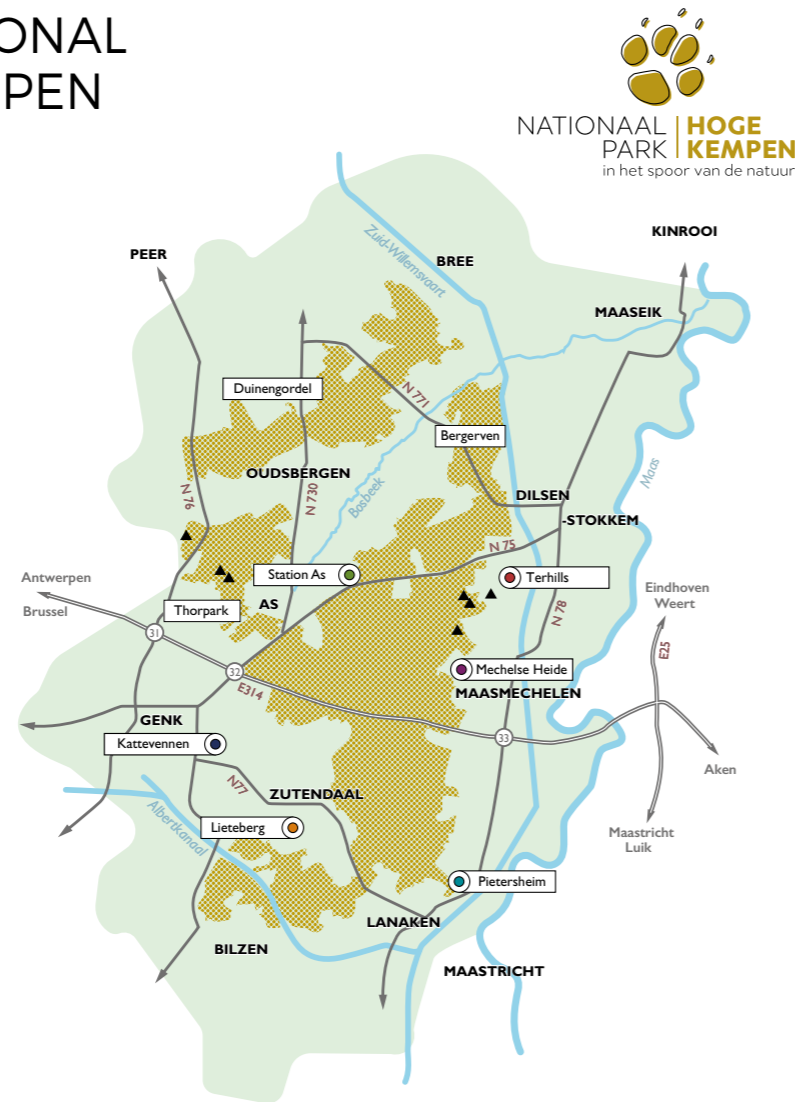
THE NATIONAL PARC HOGE KEMPEN INCLUDES OVER 12.742 HECTARES OF PROTECTED AND MANAGED FOREST AREAS AND HEATHLANDS. THE UNSPOILT NATURE RESERVE STRETCHES OUT OVER THE MUNICIPALITIES OF DILSEN-STOKKEM, MAASMECHELEN, ZUTENDAAL, LANAKEN, GENK, AS, OUDSBERGEN, BILZEN, BREE AND MAASEIK.

9 GATES OF NATIONAL PARC HOGE KEMPEN

Huge pine forests are followed by purple blooming health. Big water pools are silent witnesses of a booming gravel and sand extraction. On hill tops, you can enjoy a breathtaking view, as this natural surrounding harbours lots of rare and extraordinary animals.

The nine gates of National Parc Hoge Kempen are each a perfect starting point for your adventure. Although they welcome you all six and help you find your way in and around the National Parc, they are, however, very different. Each gate will provide you another view on the National Parc. In this way, you can experience it in six different ways!

More info:
T +32 (0) 89 65 56 65
www.nationaalpark.be



Kattevennen GENK



Most people are familiar with the gateway to the macrocosm, Kattevennen, with the Cosmodrome as the most remarkable orientation point. Next to star gazing, you can also hike, cycle, go mountain-biking, horse-riding, play miniature golf or play in the playground.

Planetariumweg 19, 3600 Genk
T +32 (0) 89 65 55 55
www.kattevennen.be

Station As AS



You are not a hiker, but rather a cyclist? The station of As is the perfect start for a cycle tour in and around the National Parc! Even here, the mine history wanders about: the 31-m high watchtower is the very same copy and spitting image of the drill tower, by means of which André Dumont discovered the first charcoal in Limburg and, more specifically, in As.

Stationsstraat 124, 3665 As
T +32 (0) 89 39 10 86
www.stationas.be

Pietersheim LANAKEN



Take a plunge into the past at the former princely country estate of Pietersheim (76 ha!), with the 12th-century water castle as an eye-catcher. At the visitor's centre, you will learn all there is to know about the glorious history of this domain. The little ones will have a blast at the children's farm and playground.

Neerharenweg 12, 3620 Lanaken
T +32 (0) 89 71 21 20
www.pietersheim.be

Mechelse Heide MAASMECHELEN



The Mechelse Heide, the gateway by far to hike and explore the area. As of mid-August till mid-September, the blooming health will use its magic and turn this scenery and landscape into a purple painting. Contrary to the other gateways, you will not find any visitor's centre here. Nature speaks for itself!

Joseph Smeetslaan 280, 3630 Maasmechelen
T +32 (0)89 76 98 88
www.mechelseheide.be

Bergerven MAASEIK



The Zuid-Willemsvaart, built in 1825, is a charming canal that connects Maastricht to Weert. When a bend in this canal was cut off at Opoeteren in the 1930s, an 'island' was created. This is already an ideal stopping place for the many cyclists on the towpaths, but in the coming years, a new "Gateway to the National Park" will be developed here. However, it will have to wait until a bridge for cyclists and walkers is built across the canal to provide access to the new Bergerven wilderness behind it.

Starting point Opoeteren
Adres: Kruising Kerkplein/Dorpermolenstraat, 3680 Maaseik
Starting point Kapel van de Weerstand
Adres: Brugstraat, 3650 Dilsen-Stokkem
T: +32 (0)89 819 290
www.nationaalparkhogekempen.be

Terhills MAASMECHELEN



Terhills will surprise you with an extraordinary part of nature in Flanders. The very same spot where the coal mine of Eidsen was fully operational some 26 years ago, harbours nowadays the rarest butterflies flying around. You will experience a surprising scenery of 'lakes and mountains' while climbing high summits and admiring spectacular views. On the terrace you will enjoy a refreshing drink on a unique location.

Zetellaan 54, 3630 Maasmechelen
T +32 (0) 89 44 04 44
www.terhills-nationaalparkhogekempen.be

Thorpark GENK



While it used to be the place where the Waterschei coal mine was going at full speed between 1924 and 1987, Thor Park is now a hotspot for technology, energy and innovation. It is also the perfect starting point to discover Hoge Kempen National Park! The view over the entire park from the slag heap has no equal. In the years to come, this new entrance will be developed further.

André Dumontlaan 67, 3600 Genk
T +32 (0)89 699 599
www.thorcentral.be

Lieteberg ZUTENDAAL



Lieteberg is known as the gateway to the microcosm. A visit of the underground insect centre is a must-see and highlight. Or you can try an adventurous track and walk the Blotevoetenpad (Barefoot Path). A special sensation.

Stalkerweg, 3690 Zutendaal
T +32 (0) 89 25 50 60
www.lieteberg.be

Duinengordel OUDSBERGEN



The German Ridder Order, mainly known from the Commandery of Alden Biezen in Bilzen, also settled in rural Gruitrode. From the beginning of the 15th century they built an out-house here under the responsibility of the Commander. The Gruitrode Commandery is not accessible today. The entire site is undergoing thorough renovation to become a fully fledged "Gateway to the National Park". It will be the ideal base for exploring Duinengordel, the Itterbeek Valley and nearby Opitter.

www.duinengordel.be



tip

- Follow the blue trail (3,4 km) to the panorama point on the long terril.
- Climb the stairs of the shaft tower and admire a unique panoramic view of the environment.

ENTRANCE GATE TERHILLS



Watch the video here



Terhills is the main gateway to the National Parc Park Hoge Kempen and offers splendid panoramic views on your hikes on and around the former slag heaps. Terhills is part of the recreation area of Terhills (p.20).

On the terrace you can enjoy a refreshing drink in a unique place. In the meantime, the children enjoy themselves in the “play pit”, a spacious playground for both small and larger children.

Ecotron

The Ecotron is located near the entrance to Terhills. This top infrastructure of Hasselt University for climate and biodiversity research is unique in Europe and an absolute attraction for both scientists and the general public. The domes can only be visited in groups and under the supervision of a ranger.

You can reserve this tour through Hoge Kempen National Park. There are also guided tours to which individuals can join. For this you consult the activity calendar. Visitors to Terhills are given the opportunity to view the entire installation and environment from the platform (Tronton) at all times.

Tronton

This watchtower offers visitors a unique view of the Ecotron. A short film and animations provide a picture of the research taking place in the Ecotron at the bottom.

Terhills Practical

Contact

Visitor welcome Terhills
Zetellaan 54, 3630 Maasmechelen
T +32(0) 89 44 04 44
www.terhills-nationaalparkhogechempen.be

Parking

Zetellaan 35, 3630 Maasmechelen

Opening hours

Open daily from 10.00 a.m.
Closed at 6.00 p.m. between April and September
Closed at 5.00 p.m. between October and March (closed on Monday)

Tickets

Access to the area will be free from 2021 onwards.
Nature lovers are invited to voluntarily donate a financial contribution.

Additional

Walking maps available at the Terhills reception center.
If you want to know more about the Terhills recreational area take a look at page 20.



tips for kids

The Speelput is a huge playground with toys for small and big children, combining the theme of the National Park and of course the typical mine past. The playground is located right next to the terrace so you can easily watch your children while they are enjoying themselves.

Earn a B' Oscar!

Do you already know the B'Oscar? It is the most important award for natural talents starting from 7 years old of the National Park of Hoge Kempen! Ree Witherspoon and Arnold Schwarzenever challenge you to become a character, who is very important to the National Park. In this way, you will turn into a miner in Terhills.

You can win his prize by using the IZI.TRAVELL-app and the special B'Oscar-booklet (€ 2,5, for sale at the reception desk of the visitor's centre of Terhills or Visit Maasmechelen). You can also earn a B'Oscar at the other access gates of the National Park.

www.nationaalpark.be



tip

In August and September, you can admire and enjoy the purple heath in full bloom on the yellow route throughout the Mechelse Heide. A must !

www.mechelseheide.be



ENTRANCE GATE MECHELSE HEIDE



Watch the
video here



The Mechelse Heide – one of the biggest heathlands in Flanders – is located on the eastern border of the Kempisch Plateau. Hikers consider it as the gateway by far to National Park Hoge Kempen with a diverse range of hikes through forests, heathlands and long-time abandoned pits. A steep climb will reward you with magnificent panoramic views.

Unlike the other five gateways, you will not find any visitor's centre here. However, you can purchase a hiking map at the three starting points: Camping Salamander (main entrance), Camping Kikmolen and café de Statie, where you can also enjoy a snack and a drink.

You can explore the Mechelse Heide on foot, by bike, on horseback or by mountain bike.

Hiking

This gateway harbours no less than 7 hiking loops. On top of those, you will find another 5 hiking loops near the entrances of the Station of Eisden and camping Kikmolen. As of this gateway, you can also pick up on the long-distance hike of 72 km.

Do you want to compose a hiking route by yourself? You can do this by using the hike intersections you will find on your hiking map.

Zandloperpad

Specifically aimed at disabled persons, the Zandloperpad has some experience elements. The 1,5 km wheelchair path throughout the former sand pit shows the different biotopes of the national park. A mini national park, you might say. A bird hide, a duck-board and some physical challenges will make it even more fun. Children in their turn can play on a sand dune or in the play wood/forest.

With horse and map

For the nature lovers on a horse, the National Park Hoge Kempen has a network of 140 km of riding tracks in store. The extensive forest and nature reserves create a perfect and ideal environment for both horse and rider. Over 85 % of the trails pass over unhardened paths.

Download the trail map via the website of Visit Limburg.

Near the entrance gate Mechelse Heide, you will find horse and rider-friendly cafés. They are equipped with a safe and clearly visible tying post.



Camping Kikmolen/Aen 't Venne
Kikmolenweg 3, 3630 Maasmechelen

Camping 't Salamanderke
Joseph Smeetslaan 280, 3630 Maasmechelen

tip

Download the free hike 'Minenwerferschule Asche' via the IZI-app. This hike of about 6 km will make you pass the practice areas of the Germans in the Mechelse Heide (heath area) during the First World War. There are even still some bunkers left.



Out and about with a Ranger

Set out in small groups with a Ranger and explore in a relaxed, sometimes active, but always surprising way the Hoge Kempen. Rangers allow holidaymakers, nature lovers, schools, companies and adolescents to have a pleasant time in nature. In a playful and durable way, you get to know nature and nature-oriented recreational possibilities.

Several times a month, you can join the guided hikes throughout the National Parc. Some must-sees: age-old stories come to life, Smakenwandeling (Taste walk/hike), Strolling through the purple heath, Indian Summer hike.

Cycling throughout the heath

As from this year, you can cycle throughout the heath area. In this way, a new exceptional cycle route is created centrally in National Park of Hoge Kempen. This new route is part of the cycle route network connecting nodes 550 and 551, passing through the Mechelse Heide (heath area), which is one of the largest heath areas in Flanders covering 700 hectares.

Do you want to know in detail the different landscapes and sceneries of the Hoge Kempen? Then buy the thematic cycle map at Visit Maasmechelen and follow one of the mapped out cycle loops.

Fun with animals in the forest: 'Beestige Boelbos'

In the fun forest ('speelbos') children and their parents get to know the animals of the National Park, specifically the species living at the Mechelse Heide (heathland). The silver-studded blue (butterfly) will guide the children through the fun forest from one adventurous meeting to the next.

But there's more: right next to the 'Beestige Boelbos' (forest) and surrounded by the 'Zandloperpad' (path), you can find a sand hill and a pond with a water game and climbing tree to ensure even more fun.

Mechelse Heide Practical

Contact:

Joseph Smeetslaan 280, 3630 Maasmechelen
T +32 (0) 89 76 98 88

www.mechelseheide.be

Opening hours:

Freely accessible, from sunrise to sunset

Additional:

- Dog areas
- Bicycle, mountain bike and hiking maps available at Visit Maasmechelen.



tips for kids

Earn a B' Oscar!

Do you already know the B'Oscar? It is the most important award for natural talents starting from 7 years old of the National Park of Hoge Kempen! Ree Witherspoon and Arnold Schwarzenever challenge you to become a character, who is very important to the National Park. In this way, you will turn into a miner in Terhills.

You can win his prize by using the IZI.TRAVELL-app and the special B'Oscar-booklet (€ 2,5, for sale at the reception desk of the visitor's centre of Terhills or Visit Maasmechelen). You can also earn a B'Oscar at the other access gates of the National Park.

www.nationaalpark.be





Terhills

ACTIVE, SPORTY, RECREATIONAL, ... THE RANGE OF ACTIVITIES AT TERHILLS LOCATED IN DILSEN-STOKKEM AND MAASMECHELEN IS AS DIVERSE AS IT IS EXTENSIVE. FORMED BY ITS PAST AS AN INDUSTRIAL MINING AND EXCAVATION SITE, THE ENVIRONMENT TODAY IS CHARACTERIZED BY LUSH FAUNA AND FLORA, HUGE WATER FEATURES AND UNIQUE VIEWS FROM THE MINE RIDES.



*Watch the
video here*





**Elaisa
Wellness**

**Terhills
Resort**

**Terhills
Cablepark**

Terhills

**Terhills
Hotel &
Conference**

Euroscop

**Maasmechelen
Village**

**Visit
Maasmechelen**

**The Bakery
by Panerex**

FEEL THE HEARTBEAT OF NATURE



STAYING IN A HISTORIC SETTING Terhills Hotel

Four stars, 60 luxury rooms: the Terhills Hotel in Maasmechelen is the sum of comfort and class. The neoclassical baroque style of the imposing main mine building is a showpiece of the industrial past. In the present, the building was given a trendy, future-oriented interpretation ... Welcome to Terhills Hotel!

For info and reservation:
Zetellaan 68, 3630 Maasmechelen
T +32 (0) 89 73 09 09, info@terhillshotel.com
www.terhillshotel.com

ATTRACTIVE MEETING Terhills Conference

A new meeting complex next to the hotel with a view of the shaft stands contributes to an inspiring and original environment. Meetings, incentives, conferences, receptions, brainstorming sessions, corporate events, ... it is all possible here.

For info and reservation:
Zetellaan 68, 3630 Maasmechelen
T +32 (0) 89 73 09 09, info@terhillshotel.com
www.terhillshotel.com/vergaderen

Terhills

ONE WITH NATURE Terhills Resort by Center Parcs

Imagine waking up with a view of glistening water and being surrounded by the amazing nature of Hoge Kempen National Park... Is it a dream or reality? Both! At Terhills Resort, you will create unforgettable holiday memories with your whole family.

For info and reservation:
www.centerparcs.be/terhills-resort.be

TERLAND Terhills Restaurant & Beach

Terland Restaurant has an amazing panoramic view of the lake. Enjoy some drinks in the sunken sitting area on the terrace (with a firepit), try a delicious snack after a hike or take your time for a tasty dinner. Terland Beach, on the other hand, is the place to be for a lovely aperitif.

For info and reservation:
www.terland.be



WELLNESS EXPERIENCE Elaisa energetic wellness

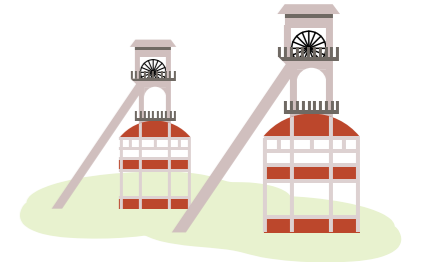
At Elaisa Energetic Wellness you get all the space you need to enjoy and relax to the depths of your being. Here you will find a new balance surrounded by the beautiful nature of the Hoge Kempen National Park, geometric shapes, crystals and other natural materials and the influences of ancient world cultures. Enjoy a unique, natural wellness experience. Work actively on your personal development, health and self-awareness in workshops and with holistic treatments. Elaisa strives for deep relaxation and long-term well-being.

For info and reservation:
National Parclaan 7, 3650 Dilsen-Stokkem
+32 (0) 89 39 09 96, info@elaisawellness.com
www.elaisawellness.com

HIKING PARADISE National Park Terhills

Terhills is home to the main entrance gate to Hoge Kempen National Park. Here you can walk for hours undisturbed through the vast nature and enjoy the beautiful views of the surrounding landscape on the tops of the mine.

For info and reservation:
Zetellaan 54, 3630 Maasmechelen
+32 (0)89 44 04 44, info@connecterra.be
www.terhills-nationaalparkhoge Kempen.be



FUN ON THE WATER Terhills Cablepark

Water skiing, wake boarding or kneeboarding in an idyllic setting? Terhills Cablepark makes it possible. Here you can also enjoy yourself at a large inflatable aqua park with obstacles up to 4 meters high! Those who prefer to watch and participate can settle down on the beach at the beach bar and restaurant. Here you can enjoy the most beautiful sunset in the region.

For info and reservation:
National Parclaan 5, 3650 Dilsen-Stokkem
info@terhillscablepark.be
www.terhillscablepark.be

THE WORLD OF BREAD AND PASTRY The Bakery by Panerex

Here you get a complete immersion in the world of bread and pastry. Not a sterile factory, but an open glass house where you can follow the production process from flour to bread. The spacious shop is surrounded by glass walls behind which you can see the bakers and pastry chefs at THE BAKERY. All your senses will be stimulated with a multitude of tastes, smells, colors and aromas!

Also discover their coffee bar, which bears the name TWO OH FIVE. While you wait, trained baristas conjure up delicious coffee specialties to take with you.

Opening hours:
Open from 8 am to 8 pm
For info and reservation:
Terhillslaan 4, 3630 Maasmechelen
+32 (0)89 43 43 00, info@panerex.com
www.facebook.com/PanerexBakery
www.facebook.com/twoohfivecoffee





Rivierpark Maasvallei

THE MEUSE IS THE PRIMARY ARTERY OF RIVERPARC MAASVALLEI, MOULDING THE TYPICAL SCENERY. IN THE BEDS, LIVE PLANTS AND ANIMALS, NOT TO BE FOUND ANYWHERE ELSE: LOTS OF WATER BIRDS, BUTTERFLIES, DRAGONFLIES, WILD BEES AND SPECIAL FLOWERS HAVE FOUND THEIR HOME THERE. EVEN THE BEAVER WILL BUILD ITS FORTRESS AGAIN IN THIS AREA. DEMANDING KINDS OF ANIMALS, SUCH AS THE OTTER AND OSPREY ARE ALSO EXPECTED. YOU CAN EXPLORE THIS UNIQUE ECOSYSTEM ON FOOT OR BIKE.

*Watch the
video here*



Unique piece of land near the Meuse

GEMS OF VILLAGES

The Riverparc Maasvallei presents some typical Meuse villages, where time seems to have stopped. Like a threaded cable alongside the Meuse, each one of them radiates authenticity. So, put on your walking shoes and let yourself be enchanted by the curiosities during these marvellous village walks. The hiking brochures will tell you more on the local history and the most special spots. Thanks to the flat landscape, you can also easily explore these gems on bike.



Did you know?
...about the cycle trails?
You can find more cycle trails in Cycling Paradise Limburg on www.visitlimburg.be/fietsen

RivierPark Maasvallei Practical

Where to start?

Parking:
Parking Dorpsplein Leut
(at the end of de Genieskensstraat)

Parking: Dorpsplein Vucht
(Dorpsstraat)

Parking:
Maaswinkel (at the end of de Dokter Haubenlaan, along the canal Zuid-Willemsvaart)

rivierparkmaasvallei.eu



FROM LEUT, YOU WILL EXPLORE THE RIVIERPARK MAASVALLEI. PARK YOUR BIKE NEAR KASTEELDOMEIN VILAIN XIII OR THE VILLAGE SQUARE AND CONTINUE ON FOOT.



Castle Vilain XIII and landscaped park

The castle got its actual shape in the 18th century, when Louis XIV added some classicist features to the marlstone elements of the 15th and 16th century. Viscount Vilain XIII laid out an English country park in the 19th century, well-kept and located between the castle and the Meuse, with quite a tale. This park has a very rare tree collection, that the viscount probably brought along from his trips abroad.

Practical
Between node/junction 56-50
Address: Dreef 148, 3630 Maasmechelen
Entrance: free admission (only castle garden can be visited)
Open: every day from sunrise till sunset
Start of walks Leut: brochure available at Tourism Maasmechelen

The Castle Park of Pipa

The castle park of Leut is an English Park with a lot of special and impressive trees. Since March 2019 you will find the children's walk "The Castle Park of Pipa". Pipa, daughter of castle lord Vilain XIII, takes you along her favorite places. Along the way you meet her six sisters, who challenge you to play, dance and sing with them. This interactive walk is completely free, all stories and assignments are on the signs that you encounter along the way. The route is fairly easy to access with the buggy. Ideal for children from 2.5 years!

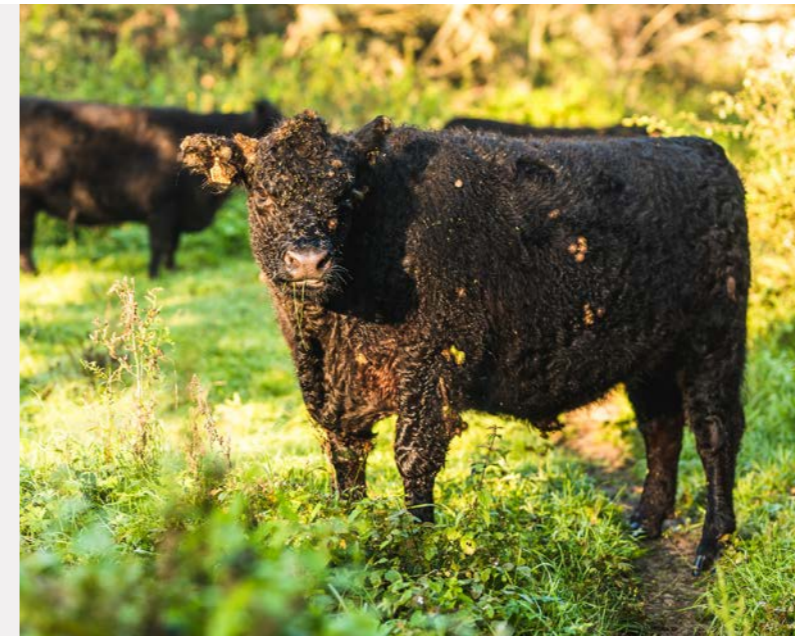
Practical
Dreef 148, 3630 Maasmechelen



Maaswinkel, open from dawn to dusk

Its name refers to the sharp curve that the river used to take in the Middle Ages. Its territory measures 280 ha, providing a very varied scenery with all kinds of flora and fauna, where you can discover watery pits with thorny bushes, willow bushes, rough herbage, standard orchards and a big, shallow water pond. Semi-wild Polish Koniks and Galloway cattle are the permanent gardeners on watch to graze the vegetation around the pond.

Practical
Junction/node 57
Entrance: Dr. Haubenlaan
Parking: along the Zuid-Willemsvaart – under the bridge
Free access



CAN WE DO SOMETHING A BIT WILDER?

The natural reserves of RivierPark Maasvallei are managed by Limburgs Landschap (B), Natuurpunt (B), Staatsbosbeheer (NI), Natuurmonumenten (NL) and Free Nature (NI). They use "big grazers" to preserve and manage this rough nature efficiently. Big grazers play a key part in developing new wild natural reserves. Galloway cattle will pasture the trees and bushes during the winter, being solid grazers leaving a half-long grass cover. On the other hand, Konik horses will manage this grass, eating the shorter grass and enjoying the most delicious herbs. Together, they see to it that the area will not be completely covered with

willows. Thanks to this variation in pasture by cattle and horses, the area will create an always changing patchwork quilt of open pasture, rougher thickets and bushes. The red and orange hike loop of the Leut hiking area will guide you along the area of Maesbempdergreend and Mazenhoven. You can walk freely in these areas, but keep your distance from the grazers, they also like their peace and privacy.

Legends alongside the Meuse

A 7-km hike will guide you through 5 ancient legends and myths of the Meuse villages Uikhoven and Kotem. In a dark past, these amusing stories were often intended to scare unwanted passersby and visitors. You can also extend the loop to the 'forelands' of the Meuse. This breathtaking natural landscape will make your effort worthwhile. The legend trail perfectly joins the cycling route network and is a perfect family hike.

Practical
Address : Intersection Pastoor Goossensstraat with Paanhuisstraat
Junction 52
Entrance: free admission
Download the free hiking map on our website www.visitmaasmechelen.com/downloads

tip

An original way to discover MaasPark River Park? Book a kayak trip via Maasland Kayak.

www.kajakmaasland.be



WALKING ON HIGH-LEVEL



The Kruinenpad

As of the dike of the Zuid-Willemsvaart, you will leave for a unique adventure, literally being 'a high-level experience'. The Tree Crown Path passes through the crowns of the trees and is a real elevated bridge installed in the mine subsidence area. This unique trail provides a privileged view of the remarkable consequences of the mine subsidence in a beautiful setting. But your eyes will also be popping out of your head with all those birds and insects between the trees.

Practical

Parking: Kerkhofstraat z/n Maasmechelen (Eisden-Dorp)
Free admission.
Located between cycling junctions 55 and 48.
Open every day, from sunrise till sunset.

TIP!
FOLLOW THE RED LOOP OF THE LEUT HIKING MAP AND DISCOVER THESE ATTRACTIONS ALONG THE WAY.

Digital Heritage walk Leut (Faro app)

From summer 2022 you can explore the historic Meuse village of Leut via the Faro app. This walk of approximately 2.5 km leads you along the nicest places.

Practical

Parking: Dorpsplein Leut – Genieskensstraat, 3630 Maasmechelen
Tip: Download the route in advance via de Faro App (see p. 34)



Set off with the Meuse Explorers

You want to know more about the Riverpark Maasvallei, the power of the Meuse and its inhabitants? Book a hike with one of the Meuse Explorers. Each hike takes about 2 to 3 hours. The five entrance villages of Riverpark Maasvallei can each individually be a starting point in your hike.

For more information and reservations:
www.rivierparkmaasvallei.eu/nl/excursies



Railway Brick Museum

The first Museum in Belgium with LEGO® Bricks (and the 5th in Europe) is situated in the old artisanal bakery in Leut. The museum is based on the history of more than 50 years of LEGO® trains, which explains the name: Railway Brick Museum. However, this doesn't mean that you will only see trains there. The first part consists of all the generations of LEGO® trains incorporated in beautiful lay-outs, which include a city around the train from that same period.

In the second part of the museum, LEGO® lay-outs have been created in various themes, from Harry Potter to a winter wonderland, or from an amusement park to the Wild West, ... The common thread is functioning trains in a specific theme. The trains can then be turned on by the visitors themselves.

The third and final part of the museum will always change.

4 times a year, so every season, a LEGO® exposition with various themes will be exhibited here. On the one hand through sets from other collectors or by exhibiting objects specifically designed for this exposition by the museum's building team.

There are also several play areas in the museum.



Children can participate in a treasure hunt in the museum, for a small surcharge of €2.50. After handing in the form, you will get a LEGO® polybag.

The museum also boasts a tastefully decorated bar where you can have a drink and a museum shop with both new and second-hand LEGO®

There is a big parking lot next to the church at 100 meters from the museum.

Practical

Sint Pietersstraat 87, 3630 Maasmechelen
+32 (0)89 38 40 08, www.railway-brickmuseum.eu

Price:

€5 pp / Free of charge for children under the age of 3.

Opening hours:

Friday through Sunday: 11:00 – 18:00
Every day during the school holidays in Belgium and the Netherlands, except for Mondays.
You do not need to make a reservation, but this could mean that might have to wait for a moment in case it happens to be busy.

FERRY BOATS

Information about all ferries in River Park Maas Valley and the opening hours: www.rivierparkmaasvallei.eu/nl/veerpontjes

The Meuse is no obstacle to cycle over the border. Ferries can cross you over smoothly. The cycle route network in Nederlands-Limburg is a little bit different, but the routes join the Belgian cycle routes without any problem.

Car ferry Hoal Euver

Ferry bridge

Palmenhofweg, Molenveld, 3630 Maasmechelen, near cycle junction 50

Open

from 1st January till 15th June and from 16th September till 31st December included, every day from 7h-21h30.
16th June till 15th September included, every day from 7h till 23h.

Rates

Cyclists and pedestrians: free

Ferry for pedestrians and cyclists Jung

Ferry bridge

renewed bank/dike Uikhoven, 3630 Uikhoven, near cycle junction 52

Open

April and October, every weekend from 10h till 18h
May and September, every day from 10h till 19h
June and August, every day from 10h till 21h

Rates

€ 1,2



Tuinwijk & mining history

FROM MINESHAFTS TO ENGINEERS' HOUSES, FROM THE COLOURFUL GARDEN QUARTER TO THE GRAND ADMINISTRATIVE BUILDINGS : MAASMECHELEN HAS KEPT AND RESTORED ITS PRECIOUS MINE PATRIMONY IN A BEAUTIFUL WAY AND PUT IT TO NEW USE. WHAT USED TO BE A WAREHOUSE, IS NOWADAYS A MUSIC, THEATRE AND DANCE ACADEMY. THE GARDEN BOROUGH WITH ITS ORIGINAL MANSIONS AND HOUSES STILL BRIMS OVER WITH ENERGY. AND THE FORMER MINE MANAGER'S MANSION ACCOMMODATES NOWADAYS A TOP RESTAURANT. IN A NUTSHELL, MAASMECHELEN PLANS A MAGNIFICENT FUTURE FOR ITS RICH HERITAGE.

Watch the video here



Eisden Tuinwijk

By bike:
Between node 60-55

Couleur Locale

Without any doubt, Maasmechelen is the most multicultural municipality in Maasland. You will notice everywhere Italian, Greek and Turkish influences explaining the large variety of restaurants and stores with their typical specialties. Moreover, the meanwhile classified lift towers and housing estates in the typical English 'Garden City-architecture', are still silent witnesses of this past.

Hike 'Mine monuments'

Welcome to the garden borough in Eisden, where past and present go hand in hand. The coal mine in Eisden used to be one of the seven mines of the Campine coal fields. This hiking trail will take you along on an interesting travel through the mine past of Eisden-Garden borough while guiding you along the most scenic and best kept spots.

You will discover these **hotspots** :

- 1** **Start** : Office Visit Maasmechelen
- 2** **Bathroom, entrance and management building** > Euroscop, Karbonkel, Hotel Terrils
- 3** **Shafts** > Terhills
- 4** **Old warehouses** > Music, Theatre and Dance Academy
- 5** **The statue of Queen Elisabeth**
- 6** **Director's residence** > Restaurant De Mangerie
- 7** **Museum Mine Worker House**
- 8** **The 'Regie'**
- 9** **Miner's monument**
- 10** **Casino** > Grand Café Casino
- 11** **Saint-Barbara church**
- 12** **The Tevhid Mosque**
- 13** **Boarding houses**



Did you know?

... about the Cité?
The "mine cité" (also called "cité") is another name for "garden borough". The mine instructed to build this, so miners could live close to their work. A lot of trees and bushes were used to create a green environment.

Did you know?

Just behind the old facade of the Badhuis, now the cinema complex, you can still see a small portion of the old bath tiles.



Museum of the Mine Worker's House

The Museum of the Mine Worker's House, a semi-detached house of 1925, is to be found in the heart of the old garden borough and it will take you on a tour of the mineworker's life in the thirties. The typical furniture and wallpaper, specific painting techniques, a crackling radio and an original current distributor will give a good impression of the mineworker's daily life.

Practical

Address: Marie Joséstraat 3, Eisden-Tuinwijk
Opening hours: From April till September, on Saturday and Sunday as of 14h till 18h
From October till March, only on Sunday from 16h till 18h
Entrance: free admission

The Koninginnepark

This park was a design after a model of the Dresden park. A kiosk was also built in the Koninginnepark. The Royal Harmony "Limburg-Maas", the harmony of the mine, regularly gave public concerts here. The kiosk and the park were often the setting for concerts, music competitions, open-air theater, folk parties and other Flemish fairs. In July and August you can enjoy fun performances in the Koninginnepark on Wednesday evenings.

A cathedral of a church

The parish church of Saint-Barbara got built, commissioned by the mining company and is a design by the hand of the architect Auguste Van den Nieuwenborg from Ukkel. This church is devoted to Saint-Barbara, patroness of the miners. The name mine cathedral is owed to its monumental appearance and proportions. The tower measures 53 meters. The style is neogothic with brick walls and a building skeleton of armoured concrete. The red and blue colour in the magnificent glass windows can also be found in the famous cathedral of Chartres in France.

Practical

Address: Kastanjelaan z/n, 3630 Maasmechelen
Open: only to be visited with a guide





The Tevhid Mosque

In 1963, the mine company built a small praying facility out of loose elements for the first Turkish miners. Because this facility got too small very soon, the Turkish association built by her own means a larger mosque that was put into use in 1981. The erection of the minaret became the dignified final piece of this prayer building.

Practical

Address:
Paul Lambertlaan z/n, 3630 Maasmechelen
Only to be visited with a guide

Did you know?

Several places of worship open their doors during the year. Check our website for more information.

Discover all monuments and historic sites on visitmaasmechelen.com

BLOG

THE STORIES BEHIND THE FACADES OF THE EISDENSE TUINWIJK

‘The miners used to have quite an organized, but also a supervised ‘life’.

You can visit the **Garden Borough** freely throughout the year. You can also book a guided tour and a visit of the museum.

You want to know more ?
www.erfgoedaisden.be

Whoever wants to explore the Cité (Garden Borough) of Eisden, cannot have any other better guide than Jan Kohlbacher (83). He was literally born and raised there and delved into the Eisden miners’ history like one of the pioneers of the Stichting Erfgoed Eisden (Foundation Heritage Eisden), in the history of the mine workers of Eisden.

The mine Cathedral of baron Coppée

We have agreed to meet at the Saint-Barbara-church, a monumental brick building, built around a concrete skeleton and towering over the lanes and miners’ houses. ‘This mine cathedral, as architects used to call it, is a project of baron Evence Coppée, main shareholder of the Eisden coal mine’, Jan explains. ‘In his correspondence, he always talked about mon église. It is quite particular that the tower is not put above or next to the entrance, like it is the case for other historically evolved churches, but on the other side of the building, at the junction of the Kastanje- and Natiënlaan, the two main streets in the borough.’

‘The *koempels* (miners) were by the way not all likewise religious. Lots of them did not attend church services. ‘The mine directors were not interested whether you attended mass on Sunday or not, as long as you went back to the mine on Monday.’

A peculiar cité language

The mining company recruited starting from 1907 Walloons, as there were no experienced mine workers or mine engineers in the area. After the first World War, the mine recruiters even went to

foreign mining areas. ‘From North-Italy, where they found the tunnel builders, they went to Austria, Hungary, Czechia, Slovakia and Poland until even the Carpathians. All these guest workers got a house in the brand new cité. Moreover, they all hoped to earn enough money in a few years’ time to go home again. Only few actually went back to the home country.’

As in other garden boroughs, people of different nationalities communicated with each other to the best of their knowledge. ‘The main language was French, but lots of miners were formers citizens of the Austrian-Hungarian Empire and knew German in an active or passive way. In this way, a very particular language was created, still used by older inhabitants : the Cité German, a kind of corrupted German using words of other languages , such as Dutch, Polish, Italian, Slovenian and Hungarian. It only used to be spoken in the Garden Borough of Eisden, not in the other cités.’

English borough on Kempens soil

We enter the Kastanjelaan, deserving definitely its name: the street is flanked on both sides by solid chestnut trees. What strikes, are the big gardens and lots of green. The big private gardens, little squares and broad streets provide a very spacious atmosphere.

Jan: ‘The whole Garden Borough is built according to the model of the British Garden Cities. Léon Jaminé, architect at that time for the province, copied the rules from England and imposed it upon the mining companies. The rules instructed how wide the streets had to be, that the workers’ houses



Heritage walk Eisden-Tuinwijk

The Eisden ‘tuinwijk’ (garden district) or ‘cité’ was built 100 years ago to house the miners and their families. This walk tells the story of this coal mine, its ‘cité’ and its residents. You will take an interactive walk of 5 km, discovering old photos and visual material of life in the garden district.



Starting location

Visit Maasmechelen, zetellaan 35, 3630 Maasmechelen. There are sufficient free parking places.

How do you get started?

1. Download the FARO Erfgoed app via iTunes or the Google Play Store or click this link. You can do this at home beforehand or via the Wi-Fi network on the starting location. Ask a staff member of Visit Maasmechelen about the free Wi-Fi password.
2. Search the app for ‘wandeling Eisden Tuinwijk’.

had to be oriented towards the sun, that the mine had to provide for schools and a hospital. Their interpretation of green and wide is, however, their own merit. In between the main straight lanes, you will find a pattern of curved streets. Also an English idea : if you do not see the end of the street, you remain curious.'

In a pace never seen before at that time, a borough was built in the heath area in Eisden in 1908, a village of hardly 300 inhabitants. The people of Eisden village did not understand what they were about to do there on the sand. The mine was actually intended to be built on the spot, where the cultural center is located now. Offices and a director's mansion were already built. But the mine exploitation center was moved to the Zetellaan, because the soil was hard. In the thirties, a new administrative building was also built there and is nowadays the Hotel Terhills.'

Until the completion of the central square at the Saint-Barbarachurch in 1936, the beating heart of the borough was the Koninginnelaan and the Casino-, Voedings- and Kapelstraat. The houses here are about one hundred years old, resulting in a picturesque picture, certainly where the hedges were kept.



'In the past, each house was surrounded by a hedge. Twice a year, the Direction of the mine put some pruning shears on each street corner. The pruning shears were passed and very soon, all hedges were cut at the prescribed height. The mine guards checked carefully these kind of things. Everything was described in the housing regulations, put up in each house. These regulations also determined that inhabitants had to keep in their frontyard a flower garden and in their backyard a vegetable garden. The miners led a very organized, but also supervised life.

Buying on credit in the Pauwengraaf

In the Cité, all facilities were available : a baker, a butcher, a convenience store where you could buy everything, from food to textiles till household utensils and chicken food. 'You did not have to leave the borough to shop. But it happened anyway, because in the mine store, you had to pay in cash. As of 1924, a lot of traders established their shop just outside the Garden Borough. There, however, it was possible to buy on credit. Contrary to other working-class neighbourhoods, miners did not have to purchase their necessities in their bosses' shops.'

In the oldest part of the Garden Borough, you will find over 40 different kinds of houses. You imagine being in an English neighbourhood, with the typical 'cottage style' being beautifully imitated. It is definitely not a grey working-class neighbourhood. 'The houses were already equipped with electric lighting and at the end of the thirties also a water system. They were far ahead of time. Those advantages contributed, of course, to commit the miners to their employer. In the cité, there were also a gendarmerie post, schools, social services, tennis courts, a football stadium and a casino. There, by the way, you could not gamble there, it was a cultural meeting spot with a library and where performances and lectures occurred.'

Buying Ice Cream from Matteo Simoni's grandfather

Jan takes me to the Mine Worker's House Museum, a beautifully kept double house of 1925 with a flower and vegetable garden. All furniture and decoration in the house were gifts of the inhabitants of the

Garden Borough. Jan shows me the original, trilingual housing regulations next to the door, before he takes me to the 'salon', that even looks a bit dignified with its pre-war wallpaper. Ancient pictures, family portraits, peacock feathers in bombshells they found in the wood, crocheted carnations out of wool rests, "exotic" instruments and other traces of inhabitants of all over Europe determine the atmosphere in this room.

Pretty soon, I understood why Stijn Koninckx chose the museum for inside scenes of his movie 'Marina': each room, from the kitchen to the bedrooms radiates an authentic atmosphere. It is special that Matteo Simoni, playing Rocco Granata in the movie, is strongly connected himself with the Garden Borough of Eisden. Jan used to know Matteo's great-grandfather Victor. First, he worked as a miner, later on, he established as a trader outside the borough and used his cargo bike to sell ice cream. As a kid, we once tried to buy ice cream on credit. Then, he pointed at the big cross of the church and said : 'Credit died last week and they buried him there. But we did, however, get a cookie.'

Fake marble and fake wallpaper

The volunteers of the Stichting Erfgoed Eisden applied different decoration techniques in the museum, as it was customary in the past. In the salon, they saved on wallpaper by not wall-papering the wall from the top till bottom. The "marble" mantel is a painted wooden mantel. The doors were made of cheap wood, but by using a lice comb and going through the wet oil paint, lines and even knots of oak wood were imitated. By painting images on the wall by means of templates, it seemed as if it got wallpapered. Upstairs in the bedrooms, even "mats" got painted on the floor.

Thanks to my exploration of the Garden Borough and the mine worker's house with Jan, I got a very good impression of the miner's daily life. Together with his colleagues, Jan kept the ordinary man's stories, hardworking workers realizing the development of the coal mine and therefore an important part of the Limburg economy. The monument "De Koolputters" (The Mine Workers) installed by the Stichting Erfgoed Eisden is a perfect tribute to the sacrifices made for that.

Practical

Mine worker's house museum
Marie José-straat 3, 3630 Eisden (Maasmechelen)
April – September: Saturday and Sunday from 14h till 18h
October – March : Sunday from 14h till 18h

Do you know why ...

- he kitchen wall in the Mine Worker's Museum is light blue?
- Fair stall holders used to camp their tents in the Cité?
- There is a white marble statue of queen Elisabeth in the park at the Koninginnelaan (and why the street is called that way) ?

You can read the answers on page 70.





Heritage

A RICH HISTORY

Mill Nieuw Leven

This half-open standard mill of 1801 used to be part of the domain of the family Vilain XIII. Already a protected monument in 1945, it is one of the oldest wind mill types. In 1995, the mill got thoroughly restored, but twice a month, the windmill is still open and fully operational.

Practical

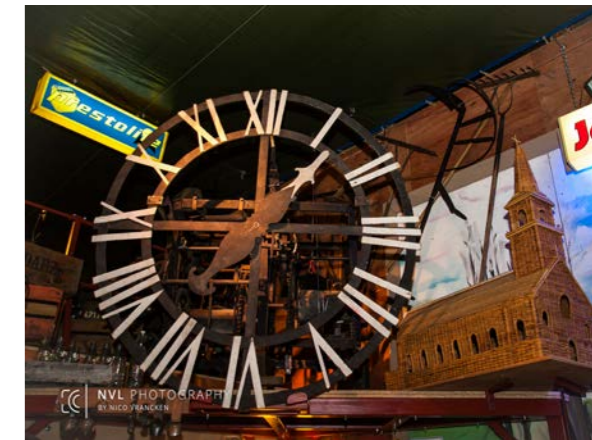
Address: Molenstraat z/n, 3630 Maasmechelen
 Open: every 1st and 3rd Sunday of the month, from 14h-18h
 Also on Heritage Day and Open Monuments Day

Agricultural Museum 'De Nostalgie'

Become acquainted with the hard, but at the same time beautiful (farmers') life as in the old days. You will find in this extraordinary museum some old farmers' vehicles, tools and objects that used to be used on the field or in the house.

Practical

Landbouwmuseum De Nostalgie
 Pastoor Goossenslaan 29
 3630 Maasmechelen
 T +32 (0) 477 67 52 12
 Only open by appointment
 Free access on Heritage Day



Decanal church- Saint Monulfus and Gondulfus

The church of Mechelen-aan-de-Maas, the heart of this amalgamated municipality, is devoted to two bishops of Maastricht of the sixth century. It is a neoclassic building, mainly consisting of bricks, dating back to 1851-1854 and the architect Herman Jaminé is from Hasselt. The church is decorated with some older cult objects, such as the 12th-century baptismal font and the 16th-century statues of Monulfus and Gondulfus. The 19th-century altars were renovated in 2004. In 2007, the renewed organ got inaugurated, being a combination of a Clerinx-organ (1854) and a Geurts-organ (1912).

Practical

Address: Dokter Haubenlaan z/n , 3630 Maasmechelen
 Opening hours: from 1st June till 30th September open every day from 13h30 till 17h30

The Kijkerk Uikhoven

The church in Uikhoven is the first church in Maasmechelen with a new purpose. Part of the church was kept to do masses and services, while as the other part has been organized as a local museum. The whole was baptized on 22nd June 2018 as a 'Kijkerk' (church to look at) Kijkerk is a museum not only displaying church treasures, but also ancient objects and interesting stories certainly deserve their spot in the spotlight. The exposition focusses on a number of local subject matters, such as herb doctor Father Goossens, the Meuse perils, the bob wire during the war, the first ferryman, the gas station and the festivities.

You can visit the museum during Heritage Day, and in the summer months on Wednesday, Sunday or by appointment.

Practical

Address: Schoorstraat 13 3630 Maasmechelen





Experiencing and enjoying

YOU WILL NOT GET BORED AT ALL IN MAASMECHELEN WITH ITS SURPRISINGLY LARGE RANGE OF ATTRACTIONS AND ACTIVITIES. SWIMMING, SAILING, KAYAKING, RACING ON THE KARTING TRACK OR ARCHERY: PLENTY OF CHOICE FOR ACTIVE PEOPLE. BUT EVEN IF YOU WANT TO SLOW DOWN AND RELAX, YOU CERTAINLY WILL BE ABLE TO ENJOY YOURSELF. HOW ABOUT GOING TO THE MOVIES, BOWLING WITH FRIENDS, FISHING, HIKING OR EXPLORING THE CYCLE NETWORK? SOUNDS ALL RIGHT TO YOU? WELL, EXPERIENCING IT IS EVEN BETTER!

TIME
FOR
ACTION!



Action!

**Maasmechelen, that means....
recreation!**

The Meuse, the Zuid-Willemsvaart, the huge nature reserves or ancient mine sites. Enough variation for people eager to explore the surroundings of Maasmechelen on foot or on bike. You can do it on your own initiative or with a guide.

Cycling/bike maps

The tourist information office will gladly help you out with lots of actual and thematic bike/cycle maps. Explore our province with the map of the Limburg cycling network (incl. the Voer-region/area). Or check out the cross-border cycle map: you can pass the Dutch border on a ferry for free and you will always pass the most beautiful spots.



MOUNTAIN BIKE NETWORK

The mountain bike network in the National Parc Hoge Kempen (NPHK) crosses a unique nature reserve consisting mainly of pine forests, alternated by land dunes and meres, offering both the amateur as experienced biker different corresponding loops in the greenest area in Flanders.

The transition between the Meuse Valley and the Kempen Plateau has created a steep side, providing opportunities for solid ascents and descents with height differences up to 45m.

The eight mountain bike loops in the NPHK close contain almost no paved roads. Mountain bikers who like a challenge can drive up to 143 km.

Mountain bike network card for sale € 3
or box with 2 cards € 6

www.vlaamsemountainbikeroutes.be



INSPIRATION ROUTE

‘Lovely biking and cycling between forests an alongside the Meuse.’

Maasmechelen is partly located in the National Park of Hoge Kempen with its vast forests and partly in the quiet Meuse river valley. From unspoilt nature to charming little villages and a lively and vibrant town center, from flat, unhardened cycle paths to challenging mountain bike routes : Maasmechelen has all a cyclist could wish for. So, take your bike and enjoy the wind blowing through and playing with your hair and the sun shining on your face.

We have mapped out this inspiring cycle route for you!

Read the full blog www.visitmaasmechelen.com/en/lovely-biking-and-cycling-between-forests-and-alongside-the-meuse

Length:
51,9 km

Starting place:
Visit Maasmechelen
Zetellaan 35, 3630 Maasmechelen
(gelegen tussen KP 55 en 60)

Cycling nodes:



Terhills

- Highlights:**
- A Entrance gate Terhills
 - B The Garden Borough of Eisden
 - C The Saint-Barbara church
 - D Eisden trainstation
 - E Mechels Bos (Forest)
 - F Entrance gate Mechelse Heide
 - G Fietsen door de Heide
 - H Valley of the Kikbeekbron
 - I Village of Oud-Rekem
 - K Castle d'Aspremont-Lynden
 - L War Memorial Messerschmitt BF-108
 - M De Wissen/ Negenoord
 - N Kruinenpad

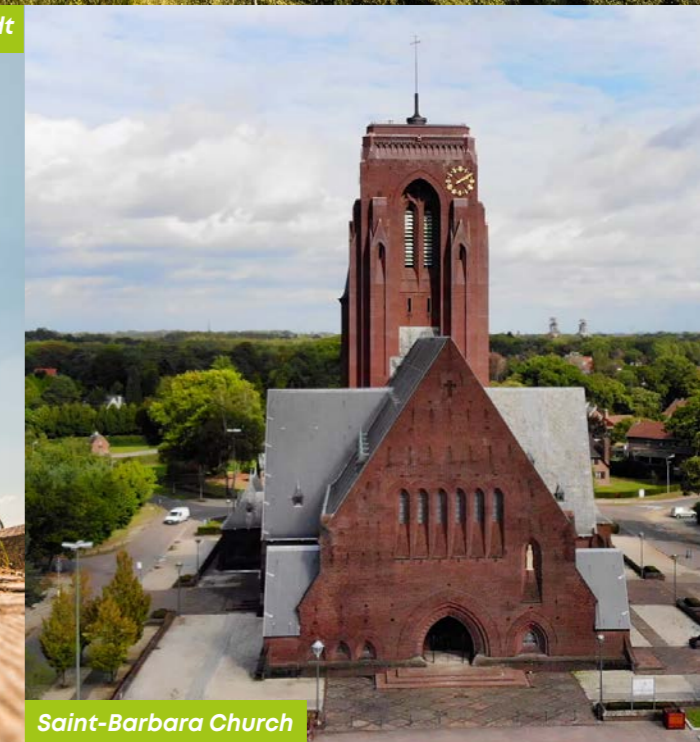
www.visitmaasmechelen.com
www.fietsnet.be



Mechelse Heide



Messerschmidt



Saint-Barbara Church



Cozy inside

INDOOR ACTIVITIES

Municipal indoor pool 'Prinsenpark'

Ringlaan 400
3630 Maasmechelen
T +32 (0) 89 76 97 37
www.maasmechelen.be

Cargo-Karting

Indoor karting circuit of over 600 metres with 2 floors. Drive along in the Mini or Super Grand Prix!

Heufkensweg 5
3630 Maasmechelen
T +32 (0) 89 77 28 50
www.cargo-karting.be

Bowling Admiral Maasmechelen

Eight fully automated bowling alleys, but also American pool, bumper billiards, table football and darts.

Wipstraat 2
3630 Maasmechelen
T +32 (0) 89 76 64 78
www.bowling-admiral.be

Euroscope (Pathé)

The cheapest and cosiest cinema in Limburg with 11 film theatres.

Zetellaan 74
3630 Maasmechelen
T +32 (0) 89 77 85 90
www.euroscope.be



Escape Room

Follow the hints, Solve the riddles. Escape now! A unique experience! Play with your friends or colleagues.

Pauwengraaf 62
3630 Maasmechelen
info@escaperoommaasmechelen.be
T +32 (0) 485 15 19 23
www.escaperoommaasmechelen.be

Shooting gallery 't Mikpunt

Archery, pistol shooting, revolver shooting and carbine shooting.

Heufkensweg 7
3630 Maasmechelen
info@mikpunt.eu
T +32 (0) 89 76 37 73
www.mikpunt.eu

Elaisa Wellness

More information on page 21.

National Parclaan 7
3650 Dilsen-Stokkem
+32 (0) 89 39 09 96, info@elaisawellness.com
www.elaisawellness.com

Snooker Sports Maasmechelen

The place to be for a nice game of pool or snooker.

Rijksweg 360
Maasmechelen
T +32(0)89 76 07 93
snooker.sports@telenet.be
www.snookersports.be

CC Maasmechelen

The cultural centre of Maasmechelen realizes a varied quality program focussing on theatre, classical and contemporary music, dance, movies, pop music, humour, family and school performances, exhibitions and an offer of cultural and artistic education.

Koninginnelaan 42, 3630 Maasmechelen
T +32(0) 89 76 97 97
info@ccmaasmechelen.be
www.ccmaasmechelen.be





Outside action!

OUTDOOR ACTIVITIES

Kajak Maasland Paddling

Alone, as a couple or with your whole family, you will certainly have lots of fun peddling down the river by canoe or kayak. But if you want to enjoy the peace and nature, you will certainly come into your own. You choose between a trip of 11 km or 21 km.

For info and reservation:
Kajak Maasland
T+32 (0) 89 71 73 90
www.kajakmaasland.be

Bootcamp outdoor Maasmechelen

Bootcamp outdoor Maasmechelen has 2 areas "outlaw village" and "concrete forest" for paintball where everyone will find their way, sneaky or rambo.

Wipstraat 1 (achter de karting), 3630 Maasmechelen
+32- 479 65 36 48, info@bomm.be
www.bomm.be
Only for groups of at least 12 people



Swimming pond de Kikmolen Natural swimming pool with two water slides

Kikmolenstraat 3
3630 Maasmechelen
T +32 (0) 89 77 09 00
www.kikmolen.be

Boat trips Maasland

Take a wonderful boat trip departing from the marina of Eisden, near Maasmechelen Village.

Zetellaan z/n 3630 Maasmechelen
+32 (0) 485 73 94 98
boottochtenmaasland@gmail.com
www.boottochtenmaasland.be

Trout pond De Pelikaan

Enjoy fishing on the edge of the National Park.

Kikweg 1
3630 Maasmechelen
T +32 (0) 89 76 49 00
www.de-pelikaan.be

Bike rental Breuls

Only rental of electric bicycles.
Book in advance.

Maj, Berbenlaan 2, 3630 Maasmechelen
T +32 (0)89 76 03 03
info@breuls.be
www.breuls.be

Marina

Enjoy the beautiful view on the water and moor at fifty metres from Maasmechelen Village.

Visit Maasmechelen, Zetellaan 35, 3630 Maasmechelen
T+32 (0) 89 76 98 88
www.visitmaasmechelen.com

In the area:

Terhills Cablepark

In Terhills Cablepark water ski park you learn water skiing, wake boarding and kneeboarding or relax by the water. Terhills Cablepark is open from the Easter holidays to the autumn holidays.

Aquapark

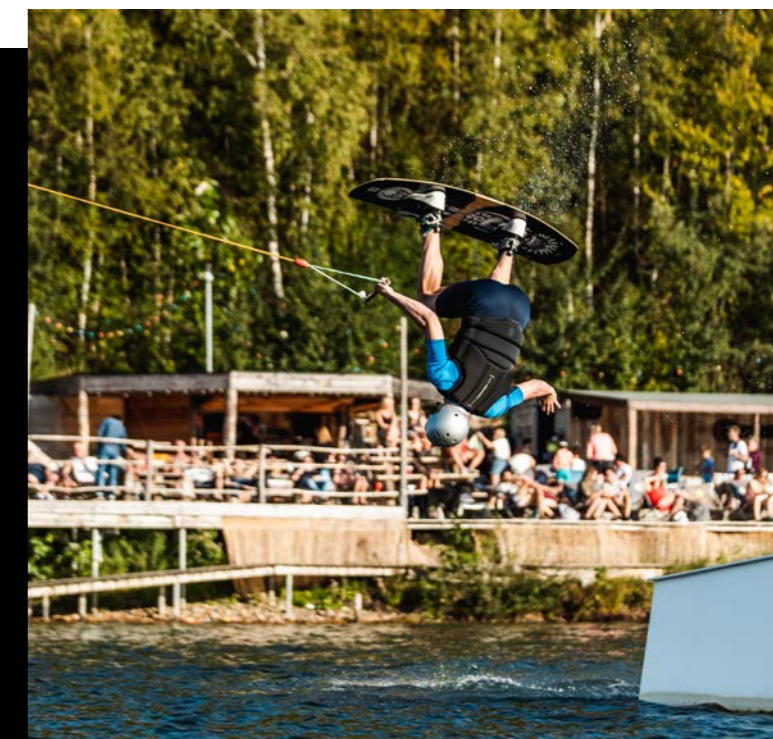
Come and horse around at the Aquapark: a smashing obstacle course of no less than 1.500 m². Climb around, slide over the giant inflatables and bounce off the walls!

Nationaal Parklaan 5
3650 Dilsen-Stokkem
T +32(0)473779146
www.terhillscablepark.be

Vesparoute

Explore the region by vespa or electric bicycle.

Departure:
De Wissen
Negenoordlaan 2
3650 Dilsen-Stokkem
This location is not always staffed. Book in advance.
+32 (0)11 74 44 44 - info@vesparoute.com
www.vesparoute.com



Bike rental

Bike & outdoor Sport Center
Streetstepper Benelux
Nationaal Parklaan 5
Parking Cablepark Terhills
3650 Dilsen-Stokkem
T +32(0) 475 45 27 43
info@streetstepperbenelux.com
www.bos-center.eu

Kids Time!

ACTIVITIES WITH CHILDREN

Pipa's Castle Park

The castle park of Leut is an English Park with quite some special and impressive trees. Since March 2019, you can also do the children's hike 'Pipa's Castle Park'.

Pipa, daughter of castle lord Vilain XIII will take you around her favourite spots. On the way, you will meet her six little sisters, challenging you to play, dance and sing with them. This interactive hike is entirely free, all stories and assignments displayed on signboard, which you meet on the way. You can do this route reasonably well with a buggy, perfect for children starting from 2,5 years old!

Dreef 148
3630 Maasmechelen

Junior Ranger

Discover the nature in the National Park and become a Junior Ranger! It is up to you do learn the skills with the Ranger to examine the diversity of plants and animals in the National Park.

- Practical**
- Period: the activity will take place throughout the year
 - Location: Kattevennen, Mechelse Heide, Lieteberg, Station As, Pietersheim, Home Fabiola, Terhills. You can also get out at Home Fabiola (Maasmechelen) and the Kalei (Dilsen-Stokkem)
 - Duration: 2 hours
 - Distance: 2 km
 - Participation: max. 25 children per Ranger
 - Price: 60 euro per Ranger, Terhills: 70 euro per Ranger (entry ticket included)
 - Age : 10 to 12 years old
 - This activity is also suitable as a class excursion.

Only group bookings via
www.nationaalparkhogekempen.be/nl/rangers



PLAYGROUNDS IN MAASMECHELEN

Playground Boorseem

Kannegatstraat 37, 3631 Boorseem
Open every day

Jagersborg

Deken Bernardstraat 6, 3630 Maasmechelen
Open every day

Treasure hunt for children (National Park of Hoge Kempen)

For children who love investigating and exploring ! Together with a ranger, they will look for clues to get hold of the treasure chest. Enjoy these nice assignments and exciting treasure hunt in the National Park !

- Practical**
- Periode: de activiteit vindt plaats het hele jaar door
 - Locatie: Mechelse heide
 - Duur: 2 uur
 - Afstand: 2 km
 - Deelname: max. 25 kinderen
 - Prijs: 60 euro
 - Leeftijd: 8 tot 12 jaar

Enkel in groep te boeken via
www.nationaalparkhogekempen.be/nl/rangers



Speelput Terhills

The Speelput is a huge playground with toys for small and big children, combining the theme of the National Park and of course the typical mine past. The playground is located right next to the terrace so you can easily watch your children while they are enjoying themselves.

Opening hours: zie Terhills
Free entrance

Earn a B' Oscar!

Do you already know the B'Oscar? It is the most important award for natural talents starting from 7 years old of the National Park of Hoge Kempen! Ree Witherspoon and Arnold Schwarzenever challenge you to become a character, who is very important to the National Park. In this way, you will turn into a miner in Terhills.

You can win his prize by using the IZI.TRAVELL-app and the special B'Oscar-booklet (€ 2,5, for sale at the reception desk of the visitor's centre of Terhills or Visit Maasmechelen). You can also earn a B'Oscar at the other access gates of the National Park.

www.nationaalpark.be

Beestige Boelbos

In the fun forest ('speelbos') children and their parents get to know the animals of the National Park, specifically the species living at the Mechelse Heide (heathland). The silver-studded blue (butterfly) will guide the children through the fun forest from one adventurous meeting to the next.

But there's more: right next to the 'Beestige Boelbos' (forest) and surrounded by the 'Zandloperpad' (path), you can find a sand hill and a pond with a water game and climbing tree to ensure even more fun.

www.mechelseheide.be

Maasmechelen Village

Zetellaan 100, 3630 Maasmechelen

Opening hours: Maasmechelen Village

CHILDREN'S ADVENTURES IN MAASMECHELEN

Take a walk on the fun side

What makes mommy and daddy a fun weekend getaway quickly becomes boring for the youngest members of the family or just another setting in which they sit on their mobile or tablet all day. Fortunately there is enough to experience in Maasmechelen to take them away from that screen. How about a walk with creative challenges in a castle park, spotting animals in the National Park, or strolling among wild cattle and horses on the banks of the Maas? Not to mention play forests, sand dunes and swimming ponds. Take a walk on the fun side of Maasmechelen!

Out and about with the little ones

The castle park of Leut is an English Park with a lot of special and impressive trees. Since March 2019 you will find the children's walk "The Castle Park of Pipa". Pipa, daughter of castle lord Vilain XIII, takes you along her favorite places. Along the way you meet her six sisters, who challenge you to play, dance and sing with them. This interactive walk is completely free, all stories and assignments are on the signs that you encounter along the way. The route is fairly easy to use with the buggy. Ideal for children from 2.5 years!

The Hourglass Path on the Mechelse Heide is a paved walking path that guides you through the different landscapes of the National Park within 1.5 km. Ideal to do with the buggy and very young pedestrians. With a deck, bird watching wall and various game elements along the way, boredom is not an option. The play forest and the sand dune also encourage romping.

Spotting rotting and critters

At Terhills you can take short and longer walks, but children can also climb a real shaft (a tower from the former coal mine) and enjoy themselves in the large outdoor playground, while you enjoy a coffee or beer on the terrace.

On the Mechelse Heide the children will enjoy the play forest, the sand dune and of course there are also shorter walking routes for young walkers.



Read the full blog:
www.visitmaasmechelen.com/en/childrens-adventures-in-maasmechelen

Beestige Boel card at the Visitor Welcome of Terhills or Camping Salamander (Mechelse Heide), which presents the children with some nice challenges for the journey.

Walking among large grazers such as half-wild Galloway cattle and Konik horses? That is possible in the Maaswinkel nature reserve. The blue walk with its 4 km is ideal for children.

Another great place to spot Konik horses and Galloways is the Maesbempder Greend. Here you also have a rambling area, where you can roam free from the paths through a rugged, water-rich landscape. Fun for young and old. It is good to know that the route - and especially the area around it - is not buggy. For a trip of about 4 km you park on the Dorpsplein in Leut (Genieskensstraat, 3630 Leut). From here you follow the blue route to hike 92. From there, the orange route leads you via walking changes 93 and 91 back to the church of Leut.



Also nice!

- Walk or cycle along the Maas and cross the river to the Netherlands with one of the ferries.
- Bad weather does not exist. Still not in the mood to go outside? Fun children's films are always shown in the Euroscop. Or throw a ball at bowling Admiral.
- Walk among the treetops on the Kruienenpad.
- Of course there are great activities for children on a regular basis. Consult our website!

Spend the night with children

You will find various hotels and B & B's in Maasmechelen. But if you are traveling with the family, it is certainly interesting to take a closer look at the range of holiday homes. You choose from a diverse range for the family or the entire family.

Wildebrassen in the house? At the Kikmolen campsite they can enjoy themselves in the large swimming pond with slide complex in good weather. And we have not yet talked about the large lawn and outdoor playground.

You can also spend the night at the other Maasmechelse entrance gate in the greenery at camping park Salamander. With a swimming pool, a playground and the Mechelse Heide you have all the ingredients for a carefree weekend or week away.

Family member with a disability? Then it is not always easy to go out. Fortunately, there is holiday center Fabiola. In the shadow of the forests of the Mechelse Heide you stay here as a family in one of the adapted houses. On the domain you will find a lot of indoor and outdoor recreation, adapted to the target group. Oh, and that Hourglass Path that we were talking about earlier? That is perfect to do with the wheelchair!





Fashionable shopping

ATTRACTIVE SHOPPING STREETS, FASHIONABLE BOUTIQUES AND, OF COURSE... MAASMECHELEN VILLAGE. EACH YEAR, WE WELCOME MILLIONS OF VISITORS OF MAASMECHELEN WHO WANT TO KNOW THE LATEST TRENDS OR GO BARGAIN HUNTING

Shopping paradise



Maasmechelen Village

This exclusive brand village will provide you with a unique shopping experience. You will indulge yourself in stylish boutiques offering their last season's collections at outlet prices. So, for opportunities, you have to visit Maasmechelen Village.

www.maasmechelenvillage.com
Free Parking

Centrum en Rijksweg N78

In the centre of Maasmechelen, you will find the Joseph Smeetslaan, the Dokter Haubenlaan and the Rijksweg N78, the central artery between Maastricht and Maaseik and lots of factory-related retail.



M2 Shopping Center

This magnificent gallery is real pearl of light and airy architecture filled with playful details. You can pleasantly wander around, certainly when it is cold and wet outside. Charming little boutiques alternate with cosy bars and restaurants.

www.m2shoppingcenter.be
Free parking



Koninginnelaan

Here, you will find lots of shops, pretty boutiques and catering businesses in the commercial heart of Maasmechelen. Fashionable buyers will certainly find something to their taste.

Pauwengraaf

This dynamic crossroads of shops, bars and restaurants is right in the middle of the dazzling commercial centre of Maasmechelen.

www.visitmaasmechelen.com



To dine & stay

WHETHER YOU WANT TO ENJOY NATURE FOR A WEEKEND, PAMPER YOURSELF CULINARY OR SHOP FOR TWO DAYS: IT IS ALL HERE. MAASMECHELEN HAS AN EXTENSIVE RANGE OF ACCOMMODATION OPTIONS FOR EVERY BUDGET, FROM COZY B & BS TO LUXURY HOTELS. MAASMECHELEN OFFERS A LARGE AND DIVERSE SELECTION OF CAFÉS, BRASSERIES, RESTAURANTS, PIZZERIAS AND DONER KEBAB SHOPS.

WWW.VISITMAASMECHELEN.COM

At the table!

À propos Bistro

The owners opted for French - Belgian cuisine with respect for authentic classics, this takes place in a casual atmosphere with a Bistro Paris feeling.

À propos Bistro

Rijksweg 205, 3630 Maasmechelen
+32 (0)468 050 301, info@aproposbistro.be

Opening hours

Open Thursday to Monday 12:00 tot 14:00 and 18:00 tot 22:00
Saturday 18:00 tot 22:00
Closed on Monday, Tuesday and Wednesday

Brasserie De Witte

Central and yet quiet location behind the town hall of Maasmechelen.

The cordial service serves an extensive menu with a selection of coffee and tea specialties, special beers, cocktails, delicious dishes and tempting ice cream coupes. You can enjoy on our unique terrace or in our attractive and cozy living room

Brasserie De Witte

Binnenhof 4 bus 4, 3630 Maasmechelen
+32 (0) 89 73 29 03

Opening hours

Tuesday to Saturday 10:00 tot 18:00
Closed on Monday and Sunday

Enoteca – Winebar Franco Gallo

Since 2009 you can come to us for a snack and a drink. Our focus is mainly on offering a top quality wine. Every wine is also available by the glass with us. In addition to wine, you can also come to us for soft drinks, coffee, a few special beers, aperitifs (Gin Tonic, Spritz, ...) and Italian tastings (Averna, Montenegro, Limoncello, Grappa, ...). In our homely and open kitchen we prepare fresh pasta with lots of love and passion. You can also order antipasto from us (Italian cheeses and meats), Bruschette, etc.

Enoteca

Europaplein 15, 3630 Maasmechelen
+32 (0)8920 96 22, info@vinifrancogallo.be

Opening hours

From Wednesday t.e.m. Thursday: from 5 p.m. to midnight
Friday and Saturday: from 4 p.m. to midnight
First Sunday of the month: from 2 p.m. to 8 p.m.
Closed on Sunday, Monday & Tuesday

Le Petit Belge

Le Petit Belge, exactly as the French call us. Whether we find that an insult? Not at all. We prove the opposite by putting everything that makes Belgium great: Belgian beers, Belgian dishes and Belgian hospitality. Our bartenders ensure that they are properly tapped and served. But we also use Belgian gold in our cocktails. Ask about it at Le Petit Belge or discover it on our menu. Our menu changes with the seasons. So make sure you have tasted it before it disappears again. We hope we can welcome you (again) soon at Le Petit Belge in Maasmechelen Village!

Le Petit Belge

Zetellaan 100B, 3630 Maasmechelen
+32(0) 89 71 21 67, maasmechelen@lepetitbelge.com

Opening hours

Monday to Sunday 10:00 - 22:00



À Propos Bistro



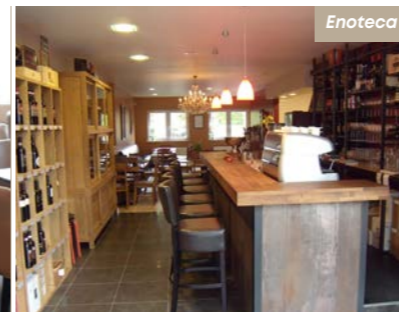
Brasserie De Witte



Barbacoo



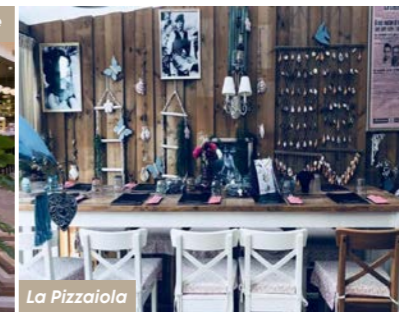
Brasserie 't Heukske



Enoteca



Le Petit Belge



La Pizzaiola



Raffaello

Barbacoo

Want to enjoy an evening in the center of Maasmechelen? With us you are at the right place!

The use of our Mibrasa charcoal oven ensures that all our dishes get that little bit extra. Have you ever tasted the unique flavors that our oven adds then you will become a loyal customer.

Barbacoo

Dokter Haubenlaan 69, 3630 Maasmechelen
+32(0) 89 79 02 82, info@barbacoamaasmechelen.be

Opening hours

Monday: 18:00 - 21:30
Tuesday: gesloten
Wednesday: gesloten
Thursday: 11:30 - 15:00 / 18:00 - 21:30
Friday: 11:30 - 15:00 / 18:00 - 21:30
Saturday: 18:00 - 21:30
Sunday: 11:30 - 15:00 / 18:00 - 21:30

Brasserie 't Heukske

Brasserie t Heukske a cozy Belgian brasserie for young and old with a varied menu from sweet to a hearty savory bite, classic or with a Mediterranean touch.

Brasserie t Heukske

With Jean and Sofie
Opperveldstraat 1, 3630 Maasmechelen
+32 (0)89 243085

Opening hours

Open on Wednesday, Friday, Saturday and Sunday from 11 a.m.
The kitchen is open continuously until 8:30 pm.

Info

Reservations from 6 people are recommended.
Prices varying between € 8.00 and € 25.00.
Pay with bancontact, maestro or visa possible.

La Pizzaiola

Welcome to La Pizzaiola! Where you will be welcomed in a homely atmosphere by Kelly and Lorenzo. The pizzas are made by Kelly, hence "La Pizzaiola". Every day she makes the pizza dough herself according to an authentic Italian recipe. Kelly's mother Marie Jeanne treats you with tasty pasta or a delicious tagliata di manzo made with love and experience. In short, dining in a family environment in a cozy interior with a nice glass of wine and a pizza or a plate of pasta. You don't need more!

La Pizzaiola by Pizzafon

Vrijthof 2, 3630 Maasmechelen
+32 (0)89 77 48 98

Opening hours

Monday, Thursday, Friday 18:00 tot 22:00
Saturday and Sunday 17:00 tot 22:00
Closed on Tuesday and Wednesday

Pizzeria Ristorante Raffaello

Raffaello stands for authentic Italian cuisine. Simplicity and pure flavors are central. Home-made lasagna, ravioli and tiramisu are just a few suggestions. We offer a varied kitchen, with a choice of pizza, pasta, meat and fish lovers!

Pizzeria Ristorante Raffaello

Rijksweg 220, 3630 Maasmechelen
+32 (0)89 77 65 81

Opening hours

From Monday-Sunday from 5 p.m. to 10 p.m.
closed on Wednesday

Have a good night...

HOTELS



Hotel Porta Cité ***
Louis Mercierlaan 1 - Eisden
+32 485 73 30 01



Hotel Al Mulino ***
Molenveldstraat 7 - Boorsem
+32 89 73 08 40



Terhills Hotel ****
Zetellaan 68 - Eisden
+32 89 73 09 09



GUESTROOMS/B&B



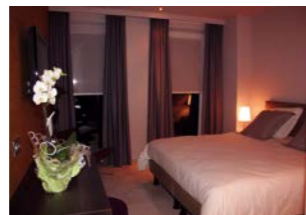
Het Vuchterhof **
Steegstraat 17 - Vucht
+32 499 39 42 48



Drempelhoeve **
Broekstraat 86 - Opgrimbie
+32 89 76 46 78



Oud Vucht ***
Steegstraat 11 - Vucht
+32 478 72 65 46



De Taller-Hoeve***
Grotestraat 289 - Kotem
+32 478 92 72 79



Maas & Mechelen ***
Grotestraat 94 - Boorsem
+32 487 17 50 51



Asmara
Weidestraat 11 - Mechelen a/d Maas
+32 89 76 38 57



Haerlekijn ****
Vlasstraat 6 - Meeswijk
+32 472 91 87 80



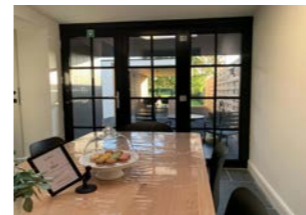
HOLIDAY HOMES



Maas & Mechelen ***
Grotestraat 94 - Boorsem
+32 89 21 53 73



In de Oude Bedstee **
Langeweidestraat 28 - Uikhoven
+31 6 53 20 89 10



Mézik Vakantiewoning ****
Molenstraat 97 - Meeswijk
+32 472 65 44 56



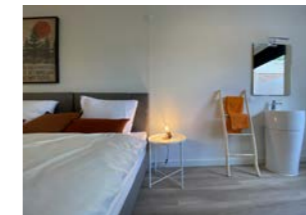
Hoeve 't Dorp ***
Heirstraat 51 - Vucht
+32 475 32 03 53



Bij den Driek ***
Kerkstraat 23 - Opgrimbie
+32 499 61 49 48



Hemelse Helderheid ****
Zandstraat 104 - Mechelen a/d Maas
+32 472 32 80 81



Maison Clement ****
Joseph Smeetslaan 313 - Mechelen a/d Maas
+32 495 79 45 88



Hoeve In Die Haeghe ****
Haagstraat 53 - Vucht
+32 89 76 05 88



D'Uyterwaerde */******
Mazenhoven 18 - Leut
+32 475 91 83 09



De Jud */******
Grotestraat 83 - Boorsem
+32 489 72 44 44



MM woning 1 ****
Paul Lambertlaan 37 - Eisden
+32 485 73 30 01



Den 118 aan de Maasmechelen ****
Schoorstraat 118 - Uikhoven
+32 499 54 82 23



HOLIDAY HOMES



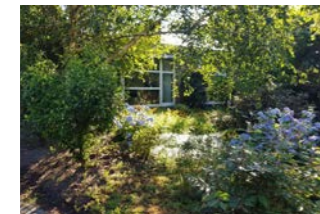
Vuchterhof Eden Roos ***
Steegstraat 17 - Vucht
+32 499 39 42 48



Chez Marley
Weg naar Zutendaal 98 - Opgrimbie
+32 472 99 12 28



Janssen en Janssen
Paanhuisstraat 7 - Uikhoven
+32 496 51 05 60



Vakantiehuis Salamander
Joseph Smeetslaan 291 - Mechelen a/d Maas
+32 474 90 00 40



HOLIDAY CENTER



Vakantiecentrum Fabiola
Weldoenerslaan 5 - Mechelen a/d Maas
+32 89 77 41 50



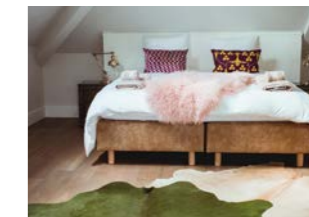
ROOM RELATED BEDS



De Twee Keuninge
Paanhuisstraat 9 - Uikhoven
+32 89 23 43 09



Maaszicht
Paanhuisstraat 3A - Uikhoven



Osteria Cellini
Sint Pietersstraat 46
+32 89 24 62 19



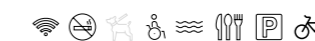
OUTDOOR RECREATIONAL FIELDS



Kampeerverblijfpark Salamander***
Joseph Smeetslaan 280 - Mechelen a/d Maas
+32 476 20 46 99



Camping Kikmolen****
Kikmolenstraat 3 - Opgrimbie
+32 89 77 09 00





The Euregion

THE AREA WHERE BELGIUM, THE NETHERLANDS AND GERMANY UNITE. MAASMECHELEN IS THE BEATING HEART OF THAT AREA. THE HISTORIC CENTRES OF MAASTRICHT, AACHEN AND HASSELT ARE WITHIN A STONE'S THROW.

VISITING OUR HIP NEIGHBOURS.



Tongeren (B) 30 km

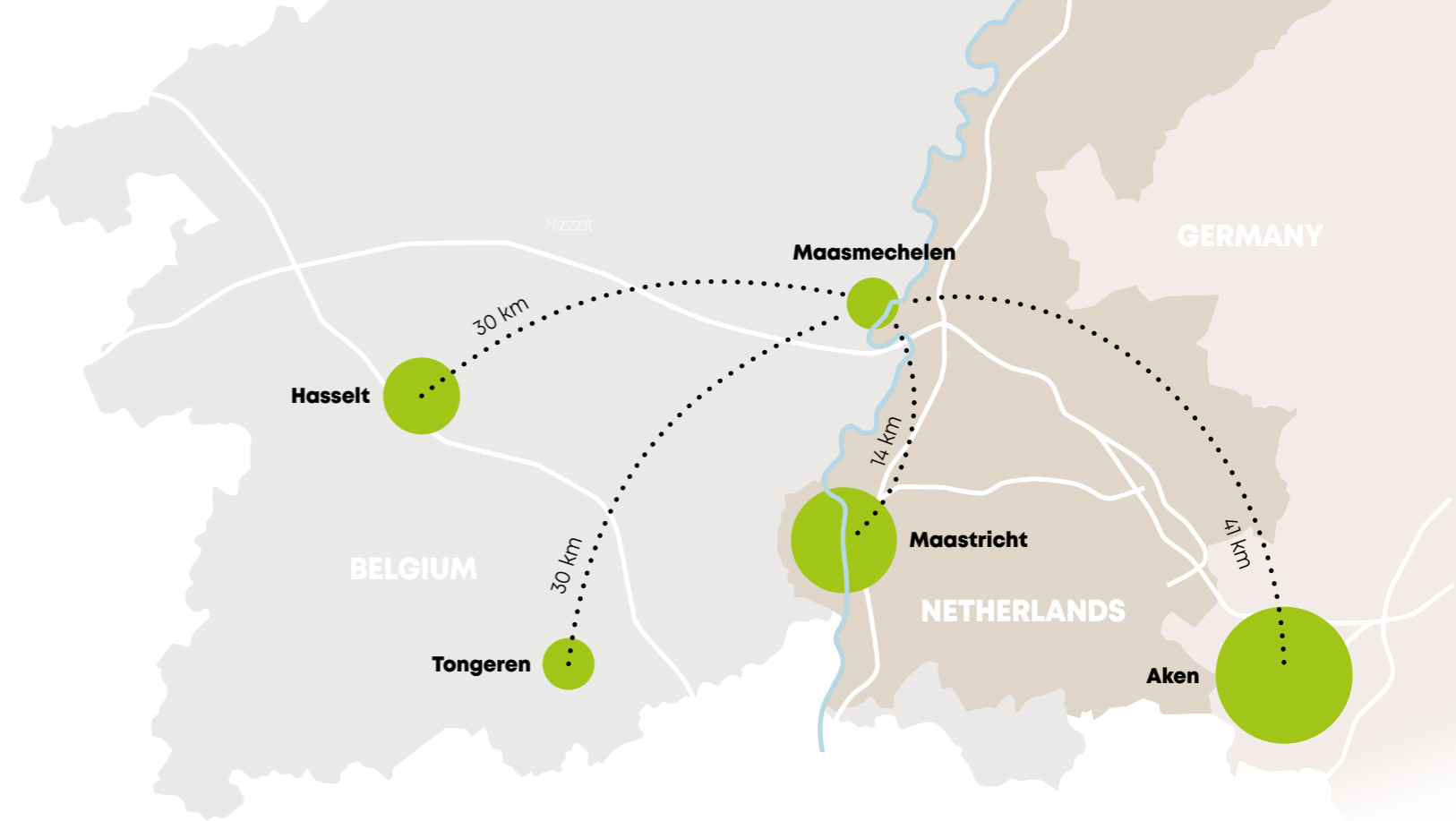
The oldest city of Belgium has a lot to offer. Discover the Gallo-Roman museum, the basilica and the picturesque beguinage. You should also pay a visit to the renowned international antiques market, each Sunday as of 7h00 am, 40 antique stores and 350 exhibitors reveal their treasures over there.

www.visit Tongeren.be

Hasselt (B) 30 km

You will find trendy boutiques, nifty shops, interesting museums, sunny terraces, fine restaurants and artful galleries in the capital of taste. On the outskirts of the centre, you can explore the Japanese Garden and the Abbey of Herkenrode.

www.visit Hasselt.be



Aken (D) 41 km

In Charlemagne's city, you cannot only enjoy shopping, but also visit the dome, the altstadt as well as the world-famous thermal baths.

www.aachen-tourismus.de



Maastricht (NL) 14 km

This historic city near the Meuse offers endless shopping fun and also presents a rich cultural offer, museums and lots of festivals. You can do a boat trip on the Meuse, or do you prefer a cave visit? Undoubtedly, Maastricht is a cosy and bustling city with lots of activities.

www.visitmaastricht.com



Answers of the report about the Eisden Garden Borough (p.37):

- Flies will not sit on light blue. A possible explanation is that flies and other animals do not associate the colour light blue with something edible.
- The fair in the Eisden Garden Borough was one of the largest in the entire area and very well organized. The mining company even had her own farm with draught horses, which they used to pull the trailers of the fair stall holders through the deep sand. The fair started on the second Sunday of July, when the miners received their holiday allowance. You can very well imagine it was a top day for the fair stall holders. The mining company had her own brass band and football team (Patro Eisden) and was always looking for new talent.
- Queen Elisabeth visited the Garden Borough in 1922. She even went down in the mines and visited a miner's house. After her lunch in hotel Beau Séjour, she left again for Brussels. Afterwards, she donated a rose bush to everyone she talked to that day.

Visit Maasmechelen



OPENING HOURS

Monday to Friday from 9 am to 4 am

Saturdays, Sundays and public holidays from 9 am to 2 pm

Closed

December 24 afternoon

25th of December

December 31 afternoon

January 1

CONTACT INFORMATION VISIT MAASMECHELEN

Zetellaan 35, 3630 Maasmechelen

T +32 (0) 89 76 98 88

E visit@maasmechelen.be

Consult our website for all events and activities:

www.visitmaasmechelen.com

f www.facebook.com/visitmaasmechelen

@ www.instagram.com/visit_maasmechelen

Souvenirs and regional products

Looking for a memory of your visit?

Do you like traditional regional products?

Or are you looking for an original gift?

You can find it all at Visit Maasmechelen.



Visit Maasmechelen, Zetellaan 35, 3630 Maasmechelen
T +32 (0) 89 76 98 88, E visit@maasmechelen.be

VISITMAASMECHELEN.COM  