



Punjab

Assembly Factbook™

Bhadaur Assembly Constituency



Key Electoral Data of Bhadaur
Assembly Constituency (Vidhan Sabha)

Punjab

Assembly Factbook™

Bhadaur Assembly Constituency



Bhadaur Vidhan Sabha

Editor & Director

Dr. R.K. Thukral

Research Editor

Dr. Shafeeq Rahman

Compiled, Researched and Published by Datanet India Pvt. Ltd.

D-100, 1st Floor,

Okhla Industrial Area, Phase-I,

New Delhi- 110020.

Ph.: 91-11- 43580781-84

Email : support@indiastatpublications.com

Website : www.indiastatelections.com

Online Book Store :

www.indiastatpublications.com

Report No. : AFB/PB-102-0123

ISBN : 978-93-5822-498-6

First Edition : January, 2018

Sixth Updated Edition : January, 2023

Price : Rs.11500/-

US\$ 310

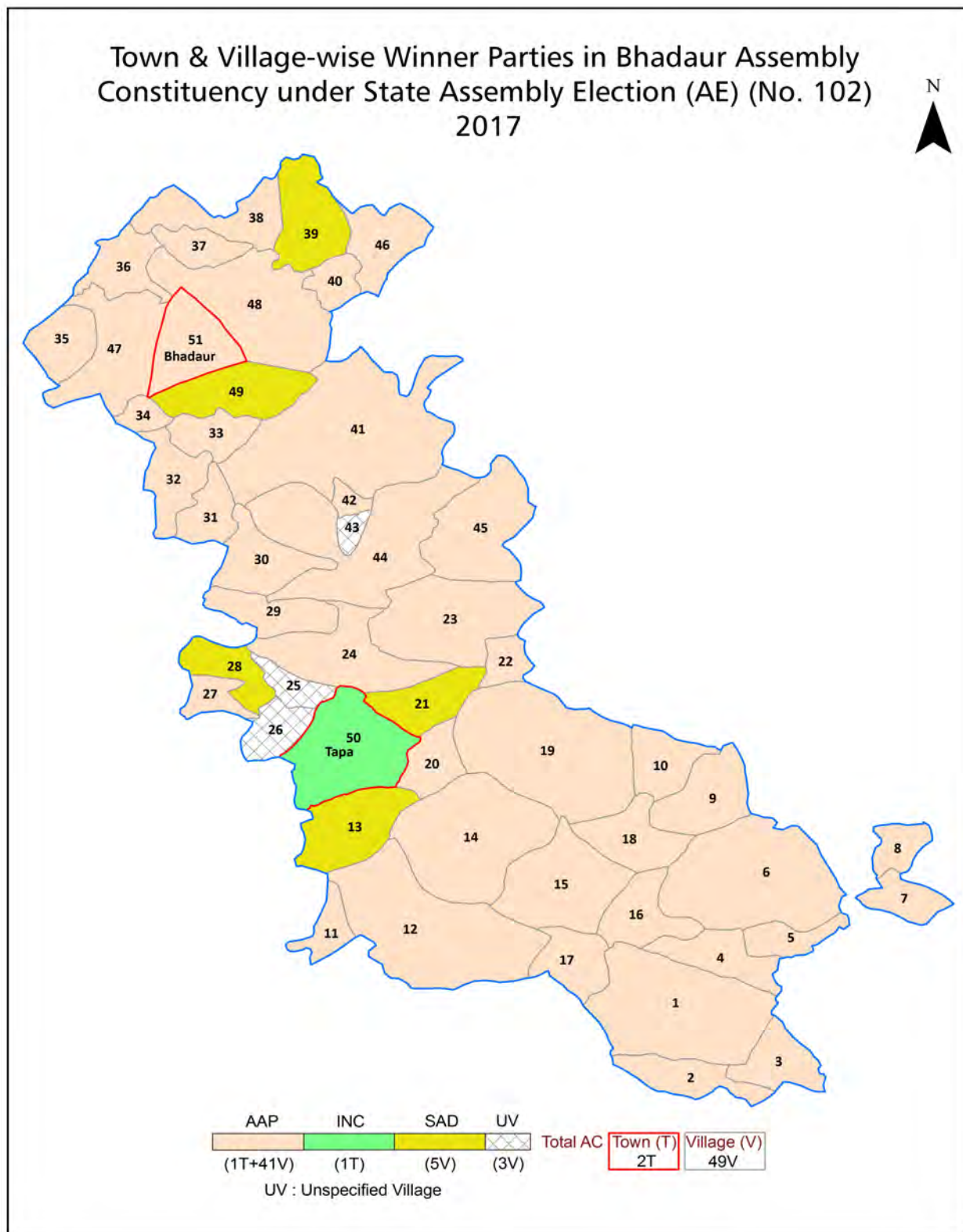
© **Datanet India Pvt. Ltd.**

All rights reserved. No part of this book may be reproduced, stored in a retrieval system or transmitted in any form or by any means, mechanical photocopying, photographing, scanning, recording or otherwise without the prior written permission of the publisher. Please refer to Disclaimer at page no. 189 for the use of this publication.

Printed in India

No.	Particulars	Page No.
	Introduction	
1	Assembly Constituency - (Vidhan Sabha) at a Glance Features of Assembly as per Delimitation Commission of India (2008)	1-2
	Location and Political Maps	
2	Location Map Boundaries of Assembly Constituency - (Vidhan Sabha) in District Boundaries of Assembly Constituency under Parliamentary Constituency - (Lok Sabha) Town & Village-wise Winner Parties- 2022, 2019, 2017, 2014, 2012 and 2009	3-11
	Administrative Setup (2011)	
3	District Sub-district Towns Villages Inhabited Villages Uninhabited Villages Village Panchayat Intermediate Panchayat	12-14
	Demographics (2011)	
4	Population Households Rural/Urban Population Towns and Villages by Population Size Sex Ratio (Total & 0-6 Years) Religious Population Social Population Literacy Rate	15-16
	Electoral Features	
5	Important Dates of Last Elections Held Electors by Gender Service Electors Voters Voters Turnout Polling Stations & Average Number of Electors per Polling Station Electors by Age Group Present Elected Representatives	17-22
	Historical Summary Election Results	
6	Vote Share of Major Parties Winning Margin (Number & Percentage) Polarity of Parties Summary Result of Assembly Segment of Parliamentary Elections 2019, 2014, 2009, 2004 and 1999 Summary Result of Assembly Elections 2022, 2017, 2012, 2007, 2002, 1997, 1992, 1985, 1980, 1977, 1972, 1969 and 1967	23-44
	Polling Station Level Election Results	
7	Name and Number of Polling Station 2022, 2019, 2017, 2014, 2012 and 2009 Polling Station-wise Electors, Voters & Voters Turnout 2022, 2019, 2017, 2014, 2012 and 2009 Polling Station wise Elections Results 2022, 2019, 2017, 2014, 2012 and 2009	45-145
8	Panchayat Election Results Panchayat Result 2013	146-170
	Share of Assembly Constituency	
9	Share of Assembly Constituency - (Vidhan Sabha) in State, District and Parliamentary Constituency - (Lok Sabha)	171
	Socio-Economic Amenities (2011)	
10	Access to Administrative Units Agricultural, Manufacturing and Industrial Commodities Demographic Indicators Education Health & Manpower Drinking Water Supply Sanitation Entertainment and Receptions Infrastructure Power Food Allocation Distribution and Marketing of Agriculture Commodities Infrastructure Transport and Road Infrastructure Communication Banking and Financial Services Land Use Irrigation Source	173-187
11	Abbreviation & Sources	188
12	Disclaimer	189

Location & Political Map



Administrative Setup

List of Village Panchayat & Intermediate Panchayat (Block) Name- 2011

Village Name	Village Panchayat Name	Intermediate Panchayat Name
Alkran (11)	Alkran	Sehna
Aspal kalan (79)	Aspal Kalan	Barnala
Aspal Khurd (78)	Aspal Khurd	Barnala
Attargarh (71)	Attargarh	Barnala
Badra (76)	Badra	Barnala
Baloke (3)	Baloke	Sehna
Bhaini Fatta (75)	Bhaini Fatta	Barnala
Bhaini Jassa (58)	Bhaini Jassa	Barnala
Burj Fatehgarh (439)	Burj Fatehgarh	Sehna
Chhana Gulabsingh (5)	Chhana Gulabsingh	Sehna
Daraj (69)	Daraj	Sehna
Deepgarh (15)	Deepgarh	Sehna
Dhaura (55)	Dhaura	Barnala
Dhilwan (Patiala) (65)	Dhilwan (P)	Sehna
Dhilwan (Nabha) (50)	Dhilwan (N)	Sehna
Dhurkot (74)	Dhurkot	Barnala
Draka (70)	Draka	Sehna
Fatehgarh Chhanna (57)	Fategarh Chhanna	Barnala
Ghunas (61)	Ghunas	Sehna
Jaimal Singhwala (1)	Jaimal Singhwala	Sehna
Jangiana (10)	Jangiana	Sehna
Kahneke (56)	Kahneke	Barnala
Kaleke (77)	Kaleke	Barnala
Kharak Singhwala (13)	Kharak Singhwala	Sehna
Khudi Khurd (60)	Khudi Khurd	Barnala
Kot Duna (80)	Kot Duna	Barnala
Kuba (73)	Kuba	Barnala
Majuke (14)	Majuke	Sehna
Mauran(Nabha) (51)	Mauran Nabha	Sehna

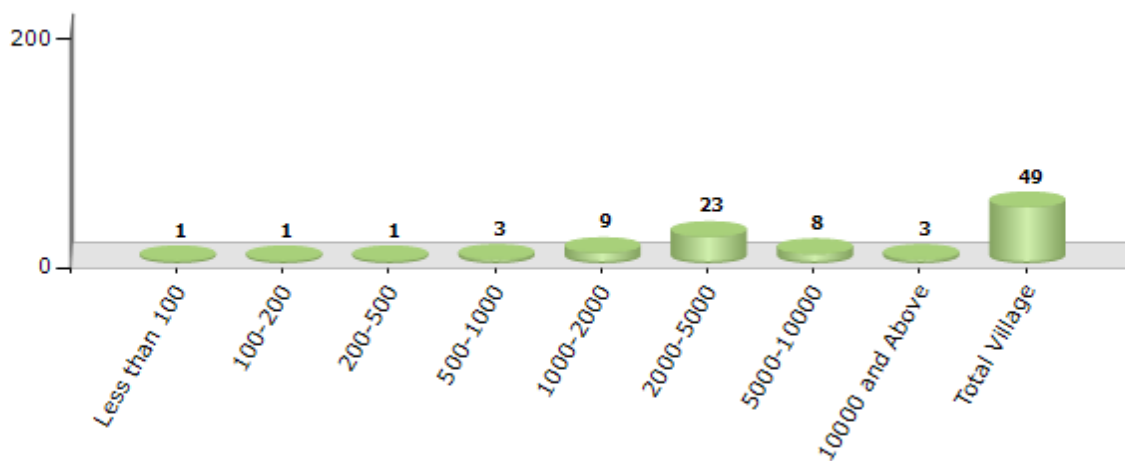
Contd....

Demographics

Number of Villages by Population Size - 2011

Less than 100	100-200	200-500	500-1000	1000-2000	2000-5000	5000-10000	10000 and Above	Total Village
1	1	1	3	9	23	8	3	49

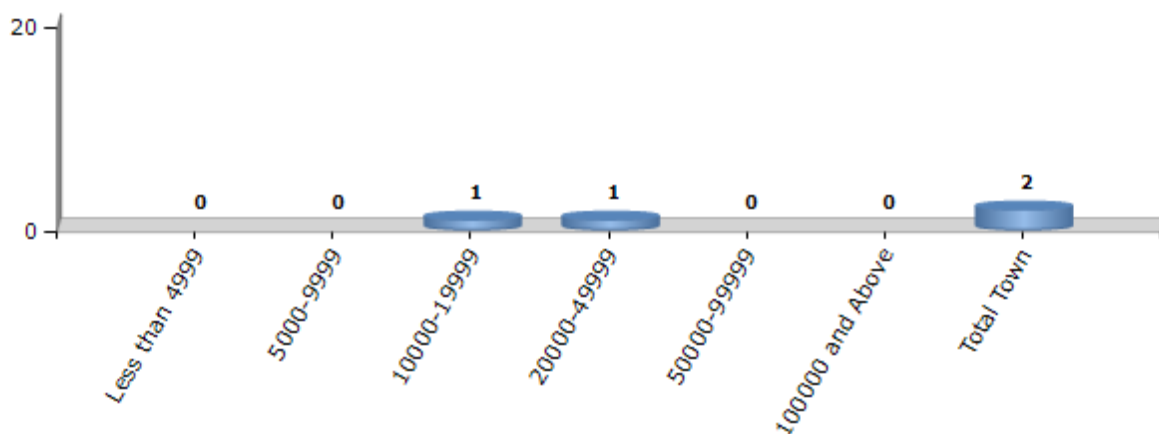
Number of Villages by Population Size - 2011



Number of Towns by Population Size - 2011

Less than 4999	5000-9999	10000-19999	20000-49999	50000-99999	100000 and Above	Total Town
0	0	1	1	0	0	2

Number of Towns by Population Size - 2011

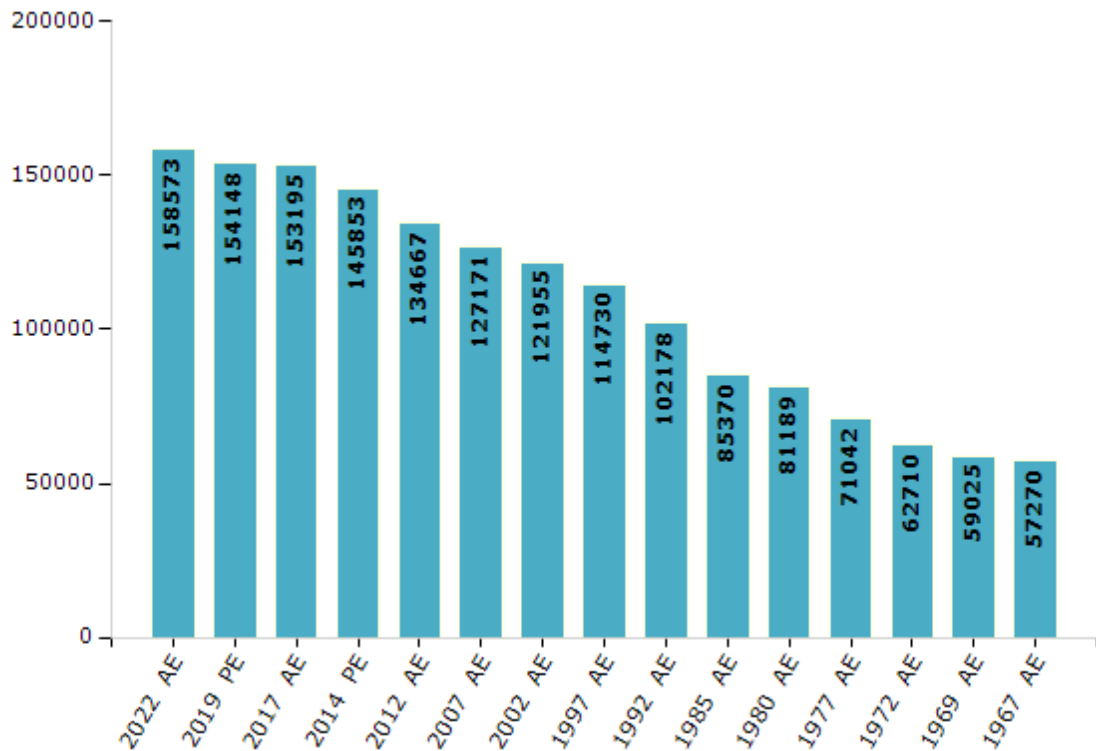


Electoral Features

Electors by Male & Female

Year	Male	Female	Others	Total	Year	Male	Female	Others	Total
2022 AE	84367	74197	9	158573	1992 AE	53930	48248	-	102178
2019 PE	82411	71733	4	154148	1985 AE	49959	35411	-	85370
2017 AE	82025	71163	7	153195	1980 AE	44605	36584	-	81189
2014 PE	77765	68086	2	145853	1977 AE	39000	32042	-	71042
2012 AE	72124	62543	0	134667	1972 AE	34685	28025	-	62710
2009 PE	-	-	-	-	1969 AE	33060	25965	-	59025
2007 AE	66874	60297	-	127171	1967 AE	-	-	-	57270
2004 PE	-	-	-	-	1962 AE	-	-	-	-
2002 AE	63749	58206	-	121955	1957 AE	-	-	-	-
1999 PE	-	-	-	-	1952 AE	-	-	-	-
1997 AE	63145	51585	-	114730					

Number of Electors



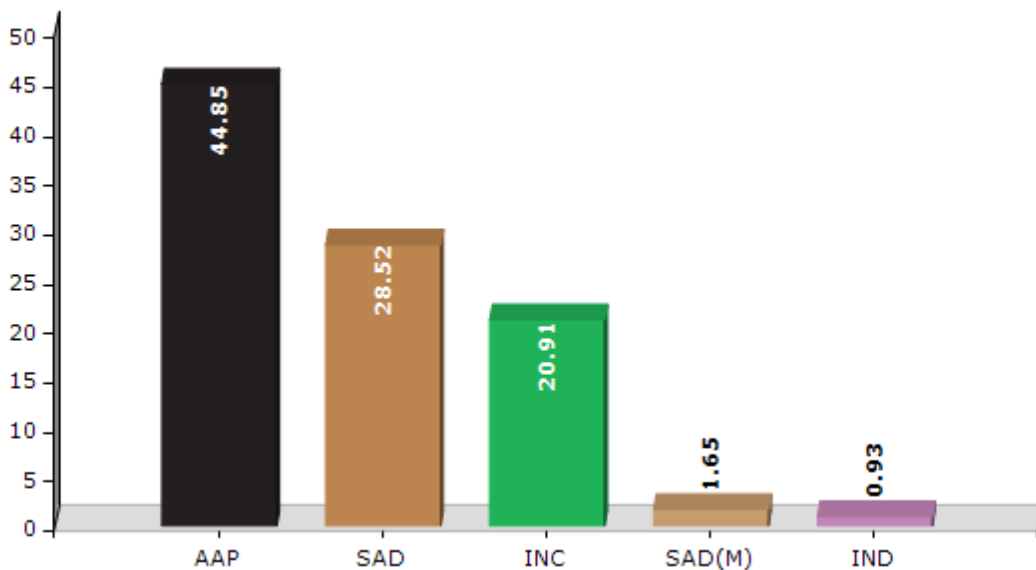
Note : AE : Assembly Election, PE : Assembly Segment of Parliamentary Election

Historical Summary Election Results

Summary Result of Assembly Election - 2017

Candidate Name	Party	Votes	Votes %
Pirmal Singh Dhaula	AAP	57095	44.85
Sant Balvir Singh Ghunas	SAD	36311	28.52
Joginder Singh	INC	26615	20.91
Paramjit Singh	SAD(M)	2095	1.65
Bagga Singh	IND	1187	0.93
Karamjit Singh	BSP	941	0.74
Savaran Singh	CPI(ML)(L)	628	0.49
Rajinder Kaur Meemsa	IND	527	0.41
Gora Singh	IND	468	0.37
Jagdeep Singh	CPIM	376	0.3
Gurmit Singh	APPA	219	0.17
	NOTA	836	0.66

Votes Percentage of Top Parties - 2017



Polling Station Level Election Results

Number and Name of Polling Stations (PS) (2022)

Number of Polling Stations	Name of Polling Stations	Number of Polling Stations	Name of Polling Stations
1	Govt. High School Ramgarh	22	Govt.Primary.School (Boys), Bhadaur
2	Govt. High School Ramgarh	23	Govt.Senior.Secondary. School (Girls), Bhadaur
3	Govt.Primary.School Deepgarh	24	Govt.Senior.Secondary. School (Girls), Bhadaur
4	Govt. Elementry. School Majhuke	25	Govt.Senior.Secondary. School (Girls), Bhadaur
5	Govt. Elementry. School Majhuke	26	Govt.Senior.Secondary. School (Girls), Bhadaur
6	Govt. High School Talwandi	27	Govt.Primary.School Girls, Badhor
7	Govt. High School Talwandi	28	Govt.Sen.Sec.School (Boys) Bhadaur
8	Govt. Elementry. School, Alkarha	29	Govt.Sen.Sec.School (Boys) Bhadaur
9	Govt. Elementry. School, Alkarha	30	Govt.Primary.School Mohala Manna
10	Govt. High School, Jangaina	31	Govt.Primary.School Mohala Manna
11	Govt. High School, Jangaina	32	Govt.Primary.School Girls, Badhor
12	Govt. Primary School, Jangiana	33	Govt.Primary.School Girls, Badhor
13	Govt.Primary.School (Boys), Bhadaur	34	Govt.Senior.Secondary. School (Girls), Bhadaur
14	Govt.Primary.School (Boys), Bhadaur	35	Govt.Senior.Secondary. School (Girls), Bhadaur
15	Govt. Pri. School, Kharak Singh Wala	36	Govt.Primary.School, Chhana Gulab Singh Wala
16	Govt.Primary.School (Boys), Bhadaur	37	Shaheed Jasandeep Singh Sran. Govt. High School, Naianewal
17	Govt.Primary.School Girls, Badhor	38	Shaheed Jasandeep Singh Sran. Govt. High School, Naianewal
18	Govt. Primary School, Mohalla Jangika, Bhadaur	39	Govt. Elementry. School, Sehna
19	Govt.Sen.Sec.School (Boys) Bhadaur	40	Govt.Senior.Secondary. School, Sehna
20	Govt.Sen.Sec.School (Boys) Bhadaur	41	Govt.Senior.Secondary. School, Sehna
21	Govt.Primary.School (Boys), Bhadaur	42	Govt. Elementry. School, Sehna

Contd....

Polling Station Level Election Results

Polling Station-wise Votes Secured by Overall Top Five Parties in Bhadaur Assembly in Assembly Election (AE) under Sangrur Parliamentary Constituency in Punjab (2022)

Number of Polling Station	Winner - Labh Singh Ugoke (AAP)	Runner-up - Charanjit Singh Channi (INC)	3rd - Satnam Singh Rahi (SAD)	4th - Hans Singh (SAD(M))	5th - Manjit Kaur (IND)	NOTA	Other	Total Votes Secured
36	564	149	200	18	3	8	9	951
37	444	135	226	58	4	11	20	898
38	363	317	162	7	0	4	18	871
39	418	102	107	74	12	3	23	739
40	437	103	136	72	2	3	21	774
41	352	163	91	25	6	3	26	666
42	378	131	84	83	3	7	30	716
43	450	184	106	56	9	6	24	835
44	424	198	107	85	6	7	17	844
45	332	103	93	35	10	3	20	596
46	312	72	132	65	2	0	16	599
47	452	93	119	66	1	9	13	753
48	324	64	86	66	1	1	13	555
49	246	233	85	44	17	8	28	661
50	336	149	117	73	2	1	17	695
51	558	81	73	55	7	5	17	796
52	623	125	36	73	2	0	17	876
53	510	108	53	67	3	4	25	770
54	452	158	44	50	5	5	19	733
55	269	218	203	19	0	8	14	731
56	142	69	132	20	0	2	6	371
57	426	105	83	57	5	6	15	697
58	441	142	69	25	6	4	39	726
59	537	162	99	37	2	6	26	869
60	511	185	108	56	8	10	29	907
61	422	77	180	4	2	4	19	708
62	587	74	153	24	7	5	18	868
63	512	39	167	25	2	3	16	764
64	346	70	30	198	6	2	18	670
65	289	42	27	18	1	2	5	384
66	498	137	172	48	9	7	21	892
67	473	135	101	56	9	1	11	786
68	139	49	44	17	1	0	4	254
69	449	187	66	13	9	12	25	761
70	274	78	17	7	8	5	17	406

Contd....

Polling Station Level Election Results

Winner, Runner-up and 3rd Party Position & Winning Margin According to Polling Stations in Bhadaur Assembly in Assembly Election (AE) under Sangrur Parliamentary Constituency in Punjab (2022)

Polling Station Number	Winner Party	Winner Votes (%)	Runner-up Party	Runner-up Votes (%)	Winning Margin Votes (%)	Third Party	Third Party Votes (%)	Other Votes (%)
71	AAP	393 (60.65)	SAD(M)	86 (13.27)	307 (47.38)	INC	66 (10.19)	103 (15.9)
72	AAP	393 (61.79)	SAD(M)	83 (13.05)	310 (48.74)	SAD	71 (11.16)	89 (13.99)
73	AAP	425 (68.99)	SAD	66 (10.71)	359 (58.28)	SAD(M)	60 (9.74)	65 (10.55)
74	AAP	406 (60.51)	SAD	96 (14.31)	310 (46.2)	INC	74 (11.03)	95 (14.16)
75	AAP	350 (54.18)	SAD	154 (23.84)	196 (30.34)	INC	94 (14.55)	48 (7.43)
76	AAP	332 (45.98)	INC	296 (41)	36 (4.98)	SAD	60 (8.31)	34 (4.71)
77	AAP	353 (56.84)	SAD	143 (23.03)	210 (33.81)	INC	68 (10.95)	57 (9.18)
78	AAP	294 (46.45)	SAD	179 (28.28)	115 (18.17)	INC	121 (19.12)	39 (6.16)
79	AAP	447 (59.13)	SAD	145 (19.18)	302 (39.95)	INC	116 (15.34)	48 (6.35)
80	AAP	508 (54.62)	INC	182 (19.57)	326 (35.05)	SAD	162 (17.42)	78 (8.39)
81	AAP	568 (64.11)	SAD	155 (17.49)	413 (46.62)	INC	89 (10.05)	74 (8.35)
82	AAP	579 (57.27)	SAD	254 (25.12)	325 (32.15)	INC	90 (8.9)	88 (8.7)
83	AAP	376 (48.52)	SAD	252 (32.52)	124 (16)	INC	98 (12.65)	49 (6.32)
84	AAP	315 (43.03)	INC	256 (34.97)	59 (8.06)	SAD	93 (12.7)	68 (9.29)
85	AAP	378 (55.18)	INC	166 (24.23)	212 (30.95)	SAD	77 (11.24)	64 (9.34)
86	AAP	357 (45.3)	INC	207 (26.27)	150 (19.03)	SAD	172 (21.83)	52 (6.6)
87	INC	285 (34.3)	SAD	266 (32.01)	19 (2.29)	AAP	224 (26.96)	56 (6.74)
88	INC	151 (37.47)	AAP	130 (32.26)	21 (5.21)	SAD	99 (24.57)	23 (5.71)
89	AAP	338 (42.78)	SAD	220 (27.85)	118 (14.93)	INC	188 (23.8)	44 (5.57)
90	AAP	311 (48.9)	SAD	188 (29.56)	123 (19.34)	INC	117 (18.4)	20 (3.14)
91	INC	228 (34.65)	AAP	211 (32.07)	17 (2.58)	SAD	164 (24.92)	55 (8.36)
92	AAP	315 (47.37)	INC	198 (29.77)	117 (17.6)	SAD	102 (15.34)	50 (7.52)
93	AAP	352 (42.11)	INC	285 (34.09)	67 (8.02)	SAD	161 (19.26)	38 (4.55)
94	AAP	260 (40.94)	INC	215 (33.86)	45 (7.08)	SAD	119 (18.74)	41 (6.46)
95	AAP	363 (41.44)	SAD	259 (29.57)	104 (11.87)	INC	205 (23.4)	49 (5.59)
96	AAP	315 (48.91)	SAD	194 (30.12)	121 (18.79)	INC	112 (17.39)	23 (3.57)
97	AAP	319 (47.05)	SAD	213 (31.42)	106 (15.63)	INC	112 (16.52)	34 (5.01)
98	AAP	261 (45.55)	INC	184 (32.11)	77 (13.44)	SAD	96 (16.75)	32 (5.58)
99	AAP	439 (52.57)	SAD	226 (27.07)	213 (25.5)	INC	128 (15.33)	42 (5.03)
100	AAP	333 (36.35)	INC	281 (30.68)	52 (5.67)	SAD	255 (27.84)	47 (5.13)
101	AAP	430 (54.29)	SAD	191 (24.12)	239 (30.17)	INC	128 (16.16)	43 (5.43)
102	AAP	333 (39.32)	SAD	292 (34.47)	41 (4.85)	INC	173 (20.43)	49 (5.79)
103	AAP	333 (43.93)	SAD	204 (26.91)	129 (17.02)	INC	172 (22.69)	49 (6.46)
104	AAP	369 (44.3)	INC	145 (17.41)	224 (26.89)	SAD	144 (17.29)	175 (21.01)
105	AAP	343 (37.32)	SAD	227 (24.7)	116 (12.62)	INC	202 (21.98)	147 (16)

Contd....

Socio-Economic Amenities - Rural

Access to Education Facilities

Particulars	Number of Villages (% of Population)				
	Available	Not Available	If Not Available (Distance of Nearest Facility)		
			A	B	C
Govt. Primary School	47 (100)	2 (0)	2 (0)	0 (0)	0 (0)
Private Primary School	25 (69)	24 (31)	0 (0)	0 (0)	0 (0)
Govt. Middle School	34 (86)	15 (14)	14 (12)	0 (0)	0 (0)
Private Middle School	18 (57)	31 (43)	0 (0)	0 (0)	0 (0)
Govt. Secondary School	25 (70)	24 (30)	8 (10)	13 (15)	0 (0)
Private Secondary School	14 (45)	35 (55)	0 (0)	0 (0)	0 (0)
Govt. Senior Secondary School	11 (45)	38 (55)	14 (22)	18 (25)	2 (2)
Private Senior Secondary School	7 (27)	42 (73)	0 (0)	1 (1)	0 (0)
Govt. Arts and Science Degree College	0 (0)	49 (100)	1 (3)	8 (15)	20 (36)
Private Arts and Science Degree College	1 (6)	48 (94)	0 (0)	4 (8)	15 (33)
Govt. Engineering College	0 (0)	49 (100)	0 (0)	1 (1)	9 (24)
Private Engineering College	0 (0)	49 (100)	1 (0)	5 (10)	33 (65)
Govt. Medicine College	0 (0)	49 (100)	0 (0)	1 (1)	41 (84)
Private Medicine College	0 (0)	49 (100)	0 (0)	0 (0)	7 (15)
Govt. Management Institute	0 (0)	49 (100)	0 (0)	2 (2)	4 (12)
Private Management Institute	0 (0)	49 (100)	0 (0)	5 (7)	38 (79)
Govt. Polytechnic	0 (0)	49 (100)	0 (0)	1 (1)	2 (3)
Private Polytechnic	1 (4)	48 (96)	2 (5)	12 (15)	31 (72)
Govt. Vocational Training School/ITI	1 (9)	48 (91)	0 (0)	8 (10)	40 (81)
Private Vocational Training School/ITI	0 (0)	49 (100)	0 (0)	0 (0)	0 (0)
Govt. Non Formal Training Centre	0 (0)	49 (100)	0 (0)	1 (1)	9 (12)
Private Non Formal Training Centre	0 (0)	49 (100)	0 (0)	4 (5)	35 (81)
Govt. School For Disabled	0 (0)	49 (100)	0 (0)	3 (4)	15 (29)
Private School For Disabled	0 (0)	49 (100)	0 (0)	2 (2)	29 (64)
Government Others	0 (0)	49 (100)	0 (0)	1 (1)	4 (7)
Private Others	0 (0)	49 (100)	0 (0)	2 (2)	42 (90)

Note : Distance A : Less than 5 km; B : Between 5-10 km; C : 10+ km.; Source : Data Analysis is based on 2011 Census.

DISCLAIMER

The Terms of Use and Disclaimer of Datanet India Private Limited (hereinafter referred to as "Datanet") for use of this analysis report of **Bhadaur Assembly Constituency (Bhadaur Vidhan Sabha)** :-

1. **Assembly Factbook™** is a Registered Trade Mark owned by Datanet.
2. All the maps are sketched and graphical representation only and have not been drawn to the scale and also not to represent the actual geographical area or boundary of the unit.
3. The data for the aforesaid analysis is based on authentic sources and has been culled from the various publications of Census, CSO and NSSO for district and block level data, various central and state government departments, Central & State Elections Commissions and the concerned Returning Officers' releases, Electoral Rolls, Election results and allied publications, internal assessment, surveys, estimates and analysis. Therefore, certain adjustment of data at micro level may have been done to arrive closer to the macro data.
4. Data have been provided on an "As Is" and "As AVAILABLE" basis
5. The colours shown in the maps or diagram and charts of a particular party, alliance or AC are indicative and do not represent them.
6. This publication which includes maps, sheets, graphs and data would be the property under copyright of Datanet only. The user may use these for its internal study, analysis and research purposes. It's public display, re-selling or any commercial uses by the user are not allowed.
7. Datanet has taken due care and caution in compilation and processing of data and allied information, but does not guarantee the accuracy, adequacy or completeness of any information/analysis and will be not responsible for any errors or omissions or for the results obtained from the use of such information/analysis.
8. All the contents for the publication have been culled from various authentic sources and Datanet reasonably believes such sources to be reliable, but does not make any representations, express or implied as to the accuracy or fitness of use of such information. The information or contents of the information/analysis do not constitute advice and should not be relied upon in making (or refraining from making) any decision. Any reliance placed upon the information provided by Datanet is the sole responsibility and strictly at the user's risk.
9. In no event will Datanet be liable for any damages (including, without limitation, damages for loss of business projects, or loss of profits) arising in contract, tort or otherwise from the use of or inability to use any of its contents, or from any action taken (or refrained from being taken) as a result of using the analysis or any of its contents. Datanet its directors, owners, editors, officials, employees, distributor and agents or any associate will not be liable for any errors in the information contained or any consequences arising from the use of the contents of the provided information/analysis.
10. If any provision of these terms and conditions is held invalid or illegal or unenforceable for any reason by any court of competent jurisdiction, such provision shall be severed and the remainder of provisions of the terms and conditions shall continue in full force and effect as if the Term of Use had been executed with the invalid, illegal or unenforceable provision eliminated.
11. If there are any discrepancies in the information provided, please bring it to attention of Datanet for suitable rectification measures.

**Buy Online This Complete Book At
Datanet India eBooks Store**

www.indiastatpublications.com

or go directly at

[http://www.indiastatpublications.com/
Assembly_factbook/Punjab/Sangrur/ Bhadaur](http://www.indiastatpublications.com/Assembly_factbook/Punjab/Sangrur/Bhadaur)

 **indiastat**elections

ISBN : 978-93-5822-498-6



9 789358 122498 6