



Tamil Nadu

# Assembly Factbook™

Nanguneri Assembly Constituency



Key Electoral Data of Nanguneri  
Assembly Constituency (Vidhan Sabha)

Tamil Nadu

# Assembly Factbook™

Nanguneri Assembly Constituency



Nanguneri Vidhan Sabha

## **Editor & Director**

Dr. R.K. Thukral

## **Research Editor**

Dr. Shafeeq Rahman

## **Compiled, Researched and Published by Datanet India Pvt. Ltd.**

D-100, 1st Floor,

Okhla Industrial Area, Phase-I,  
New Delhi- 110020.

Ph.: 91-11- 43580781-84

Email : support@indiastatpublications.com

Website : www.indiastatelections.com

## **Online Book Store :**

www.indiastatpublications.com

**Report No. :** AFB/TN-227-0123

**ISBN :** 978-93-5313-771-7

**First Edition :** January, 2018

**Sixth Updated Edition :** January, 2023

**Price :** Rs. 11500/-

US\$ 310

**© Datanet India Pvt. Ltd.**

All rights reserved. No part of this book may be reproduced, stored in a retrieval system or transmitted in any form or by any means, mechanical photocopying, photographing, scanning, recording or otherwise without the prior written permission of the publisher. Please refer to Disclaimer at page no. 255 for the use of this publication.

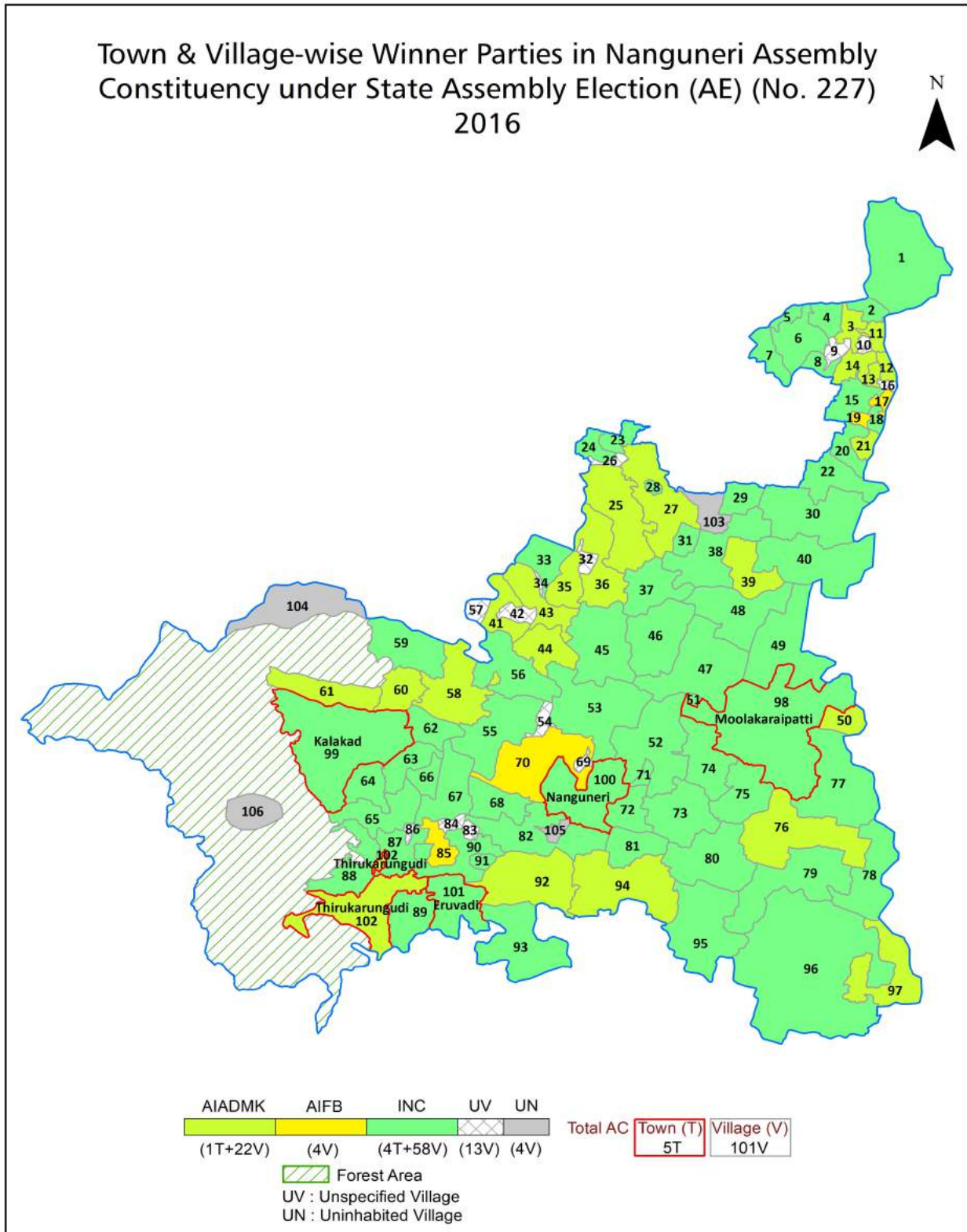
Printed in India

## Contents

No.	Particulars	Page No.
	<b>Introduction</b>	
1	Assembly Constituency - (Vidhan Sabha) at a Glance   Features of Assembly as per Delimitation Commission of India (2008)	1-2
	<b>Location and Political Maps</b>	
2	Location Map   Boundaries of Assembly Constituency - (Vidhan Sabha) in District   Boundaries of Assembly Constituency under Parliamentary Constituency - (Lok Sabha)   Town & Village-wise Winner Parties- 2021, 2019, 2016, 2014, 2011 and 2009	3-11
	<b>Administrative Setup (2011)</b>	
3	District   Sub-district   Towns   Villages   Inhabited Villages   Uninhabited Villages   Village Panchayat   Intermediate Panchayat	12-18
	<b>Demographics (2011)</b>	
4	Population   Households   Rural/Urban Population   Towns and Villages by Population Size   Sex Ratio (Total & 0-6 Years)   Religious Population   Social Population   Literacy Rate	19-20
	<b>Electoral Features</b>	
5	Important Dates of Last Elections Held   Electors by Gender   Service Electors   Voters   Voters Turnout   Polling Stations & Average Number of Electors per Polling Station   Electors by Age Group   Present Elected Representatives	21-26
	<b>Historical Summary Election Results</b>	
6	Vote Share of Major Parties   Winning Margin (Number & Percentage)   Polarity of Parties   Summary Result of Assembly Segment of Parliamentary Elections 2019, 2014, 2009, 2004 and 1999   Summary Result of Assembly Elections 2021, 2016, 2011, 2006, 2001, 1996, 1991, 1989, 1984, 1980, 1977, 1971 and 1967	27-49
	<b>Polling Station Level Election Results</b>	
7	Name and Number of Polling Station 2021, 2019, 2016, 2014, 2011 and 2009   Polling Station-wise Electors, Voters & Voters Turnout 2021, 2019, 2016, 2014, 2011 and 2009   Polling Station wise Elections Results 2021, 2019, 2016, 2014, 2011 and 2009	50-234
	<b>Share of Assembly Constituency</b>	
8	Share of Assembly Constituency - (Vidhan Sabha) in State, District and Parliamentary Constituency - (Lok Sabha)	235
	<b>Socio-Economic Amenities (2011)</b>	
9	Access to Administrative Units   Agricultural, Manufacturing and Industrial Commodities   Demographic Indicators   Education   Health & Manpower   Drinking Water Supply   Sanitation   Entertainment and Recreations Infrastructure   Power   Food Allocation Distribution and Marketing of Agriculture Commodities Infrastructure   Transport and Road Infrastructure   Communication   Banking and Financial Services   Land Use   Irrigation Source	236-251
10	<b>Abbreviation &amp; Sources</b>	252-254
11	<b>Disclaimer</b>	255



Location & Political Map



## Administrative Setup

### List of Village Panchayat & Intermediate Panchayat (Block) Name - 2011

Village Name	Village Panchayat Name	Intermediate Panchayat Name
Krishnapuram	Nochikulam	Palayamkottai
Kunnathur	Kunnathur	Palayamkottai
Kuravankulam	Sengulam	Palayamkottai
Madam Alankulam	Puliyoorkurichi	Kalakadu
Malaiyadippudur	Malayadipudur	Kalakadu
Manappadaividu	Manappadaiveedu	Palayamkottai
Alangulam	Vadukatchimathil	Kalakadu
Marukalkurichi	Marukalkurichi	Nanguneri
Alwaneri	Alwaneri	Nanguneri
Maruthur	Maruthur	Palayamkottai
Araikulam	Munnirpallam	Palayamkottai
Melapattam	Melapattam	Palayamkottai
Ariyakulam	Ariyakulam	Palayamkottai
Melaputhaneri	Melaputhaneri	Palayamkottai
Melathidiyur	Melathidiyoor	Palayamkottai
Melathiruvengadanathapuram	Thiruvengadanathapuram	Palayamkottai
Ariyakulam	Ariyakulam	Nanguneri
Melkarai	Singikulam	Kalakadu
Avanapperi	Keelapattam	Palayamkottai
Melmalaiyaneri	Vadukatchimathil	Kalakadu
Chintamani	Chinthamani	Nanguneri
Munnanjpatti	Munanchipatti	Nanguneri
Munnirpallam	Munnirpallam	Palayamkottai
Dalapathi Samudram	Dhalapathisamudram	Nanguneri
Muthur	Muthur	Palayamkottai
Deivanayagaperi	Ariyakulam	Nanguneri
Naduvakurichi	Naduvakuruchi	Palayamkottai
Devanallur	Devanallur	Kalakadu
Nambithalaivanpattayam	Thavlavaipuram	Kalakadu

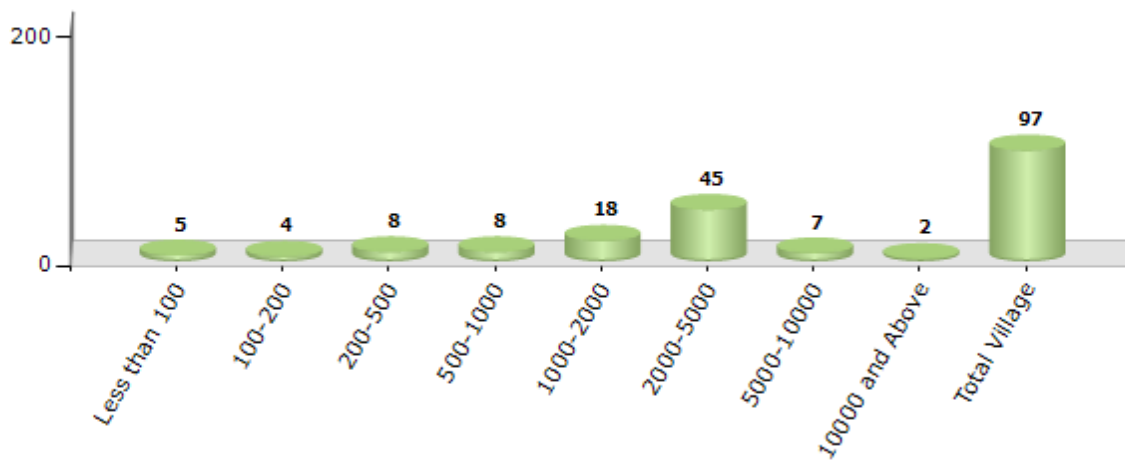
Contd....

## Demographics

### Number of Villages by Population Size - 2011

Less than 100	100-200	200-500	500-1000	1000-2000	2000-5000	5000-10000	10000 and Above	Total Village
5	4	8	8	18	45	7	2	97

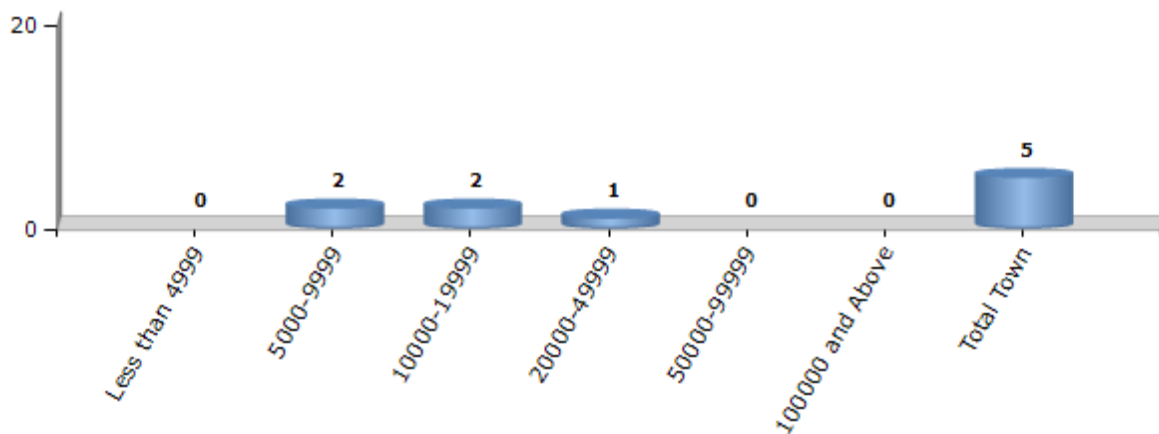
Number of Villages by Population Size - 2011



### Number of Towns by Population Size - 2011

Less than 4999	5000-9999	10000-19999	20000-49999	50000-99999	100000 and Above	Total Town
0	2	2	1	0	0	5

Number of Towns by Population Size - 2011

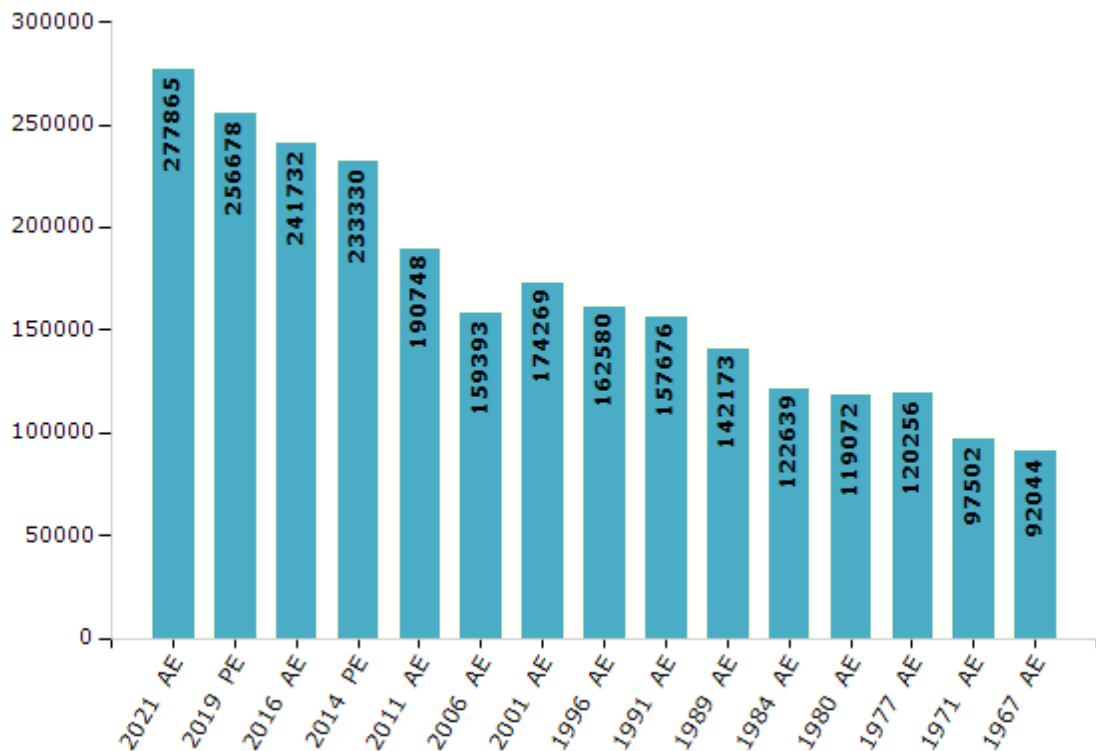


## Electoral Features

### Electors by Male & Female

Year	Male	Female	Others	Total	Year	Male	Female	Others	Total
2021 AE	136628	141228	9	277865	1999 PE	-	-	-	-
2019 PE	127285	129389	4	256678	1996 AE	79079	83501	-	162580
2016 AE	120315	121415	2	241732	1991 AE	75707	81969	-	157676
2014 PE	116734	116596	0	233330	1989 AE	68682	73491	-	142173
2011 AE	95238	95510	-	190748	1984 AE	58151	64488	-	122639
2009 PE	-	-	-	-	1980 AE	56125	62947	-	119072
2006 AE	77446	81947	-	159393	1977 AE	57217	63039	-	120256
2004 PE	-	-	-	-	1971 AE	45101	52401	-	97502
2001 AE	83984	90285	-	174269	1967 AE	-	-	-	92044

Number of Electors



Note : AE : Assembly Election, PE : Assembly Segment of Parliamentary Election



## Historical Summary Election Results

### Summary Result of Assembly Election - 2016

Candidate Name	Party	Votes	Votes %
Vasanthakumar. H	INC	74932	43.45
Vijayakumar. M	AIADMK	57617	33.41
Suresh Alias Kasinivendan . S	AIFB	14203	8.24
Jeyabalan. K	DMDK	9446	5.48
Manikandan.V	BJP	6609	3.83
Karvannan. E	NTK	2325	1.35
Essakkimuthu.V	IND	1903	1.1
Thiruppathi . S	PMK	660	0.38
Jegadeesan. P	IND	559	0.32
Thangeswaran.P	BSP	533	0.31
Sudalaikannu. A	IND	523	0.3
Lingadurai. T	VTIP	434	0.25
Ashok. M	EDP	404	0.23
Murugan. S	IND	391	0.23
Kannan. S	TMMK	315	0.18
Ukendran.K	IND	217	0.13
	NOTA	1399	0.81

## Polling Station Level Election Results

### Number and Name of Polling Stations (PS) (2021)

Number of Polling Stations	Name of Polling Stations	Number of Polling Stations	Name of Polling Stations
1	Hindu Primary School West Portion,Kunnathur.	17	T.D.T.A Middle School .East Building, First Room Araikulam .
1A	Hindu Primary School West Portion,Kunnathur.	17A	T.D.T.A Middle School .East Building, First Room Araikulam .
2	Hindu Primary School East Portion,Kunnathur.	18	T.D.T.A Middle School .East Building, North Part Araikulam .
3	Panchayat Union Primary School Melathiruvengadanathapuram.	19	Community Hall, Thidiyur
4	Panchayat Union Primary School East Part West Part Melathiruvengadanathapuram.	20	Panchayt Union Middle School New Building Keezhe Thidiyur
5	Rada Swamimiddle School ,Agragaram Street, East Bulding, Melathiruvengadanathapuram	20A	Panchayt Union Middle School New Building Keezhe Thidiyur
6	Panchayat Union Primary School .East Building,North Room,Tharuvai	21	Panchayt Union Middle School North Block, Nouth Building Thidiyur
7	Panchayat Union Primary School .North Building, East Portion Room,Tharuvai	22	Panchayt Union Middle School New Building South Portion Keezha Thidiyur
8	Panchayat Union Primary School , Anna Century Building, Tharuvai.	23	C.M.S.Evanjalikal Primary School Vaduvorpatti
8A	Panchayat Union Primary School , Anna Century Building, Tharuvai.	23A	C.M.S.Evanjalikal Primary School Vaduvorpatti
9	Panchayat Union Primary School South Tiled Building, Tharuvai.	24	Kailasapathi Hindu Middle School North Building,West Portion, Singikulam
10	Panchayat Union Primary School South Building,( Crc) Tharuvai	25	Kailasapathi Hindu Middle School North Building,East Portion ,Singikulam
10A	Panchayat Union Primary School South Building,( Crc) Tharuvai	26	Kailasapathi Hindu Middle School North Partion Sounth Building ,Singikulam
11	Panchayat Union Primary School West Building, Pillayar Koil Street, Munneerpallam	27	T.D.T.A Primary School North New Building, Keelakaduvetti
12	Panchayat Union Primary School New Building, South Building Std 5 East Block West Side Room 16 ,17 Pillayar Koil Street, Munneerpallam	27A	T.D.T.A Primary School North New Building, Keelakaduvetti
13	Govt.Hr.Sec. School East Block ,South Portion , (Room No. 16.17), Munneerpallam.	28	T.D.T.A Middle School West Building, South Portion, Keelasadiyamankulam
14	Govt.Hr.Sec. School Govt .Hr.Sec School S.S.A Building East Block ,West Side Portion 13 ,( Room No. 13 Munneerpallam.	28A	T.D.T.A Middle School West Building, South Portion, Keelasadiyamankulam
15	Govt.Hr.Sec. School ,Ssa Building, East Block, (North Side), Room No.12, East Side Munneerpallam.	29	Panchayatunionprimarieschool Westbuilding,Westportion,Aathichaperi
15A	Govt.Hr.Sec. School ,Ssa Building, East Block, (North Side), Room No.12, East Side Munneerpallam.	30	Panchayat Union Primary School North Building, , Devanallur
16	T.D.T.A Middle School .West Building, Araikulam .	31	Hindu Middle School Central Building, Devanallur
16A	T.D.T.A Middle School .West Building, Araikulam .	31A	Hindu Middle School Central Building, Devanallur

Contd....

## Polling Station Level Election Results

### Polling Station-wise Votes Secured by Overall Top Five Parties in Nanguneri Assembly in Assembly Election (AE) under Tirunelveli Parliamentary Constituency in Tamil Nadu (2021)

Number of Polling Station	Winner - Ruby R Manoharan (INC)	Runner-up - Ganesaraja, N. (AIADMK)	3rd - Paramasiva Iyyappan, S. (AMMKMNKZ)	4th - Veera pandi, P. (NTK)	5th - Kathiravan, T. (IND)	NOTA	Other	Total Votes Secured
27A	175	161	107	13	1	2	9	468
28	215	63	11	54	0	3	11	357
28A	283	59	13	24	0	2	3	384
29	257	55	14	47	0	0	10	383
30	107	360	129	58	2	9	9	674
31	49	95	234	26	8	4	5	421
31A	54	128	258	7	3	5	13	468
32	262	122	26	75	2	0	6	493
32A	293	108	19	26	1	1	8	456
33	121	219	170	20	1	3	7	541
34	236	249	143	39	32	6	14	719
35	225	79	22	53	0	3	22	404
35A	268	62	19	28	2	1	14	394
36	300	167	21	77	0	3	15	583
37	214	216	212	67	2	5	21	737
38	236	119	5	56	2	4	20	442
39	300	260	4	79	16	2	12	673
40	174	101	6	46	11	1	40	379
40A	240	105	3	24	9	1	31	413
41	210	195	5	48	0	3	45	506
42	264	278	14	55	0	6	28	645
43	140	185	20	45	0	6	18	414
43A	173	215	22	36	0	7	12	465
44	156	176	11	44	0	5	5	397
44A	190	180	14	28	0	4	12	428
45	281	277	8	55	1	3	12	637
46	186	243	15	52	13	5	20	534
47	238	222	4	51	0	2	4	521
48	246	211	3	46	0	7	6	519
49	171	160	2	50	0	2	11	396
50	233	308	8	91	5	5	36	686
51	217	151	19	38	1	13	6	445
51A	250	187	13	24	0	8	9	491
52	210	187	12	53	0	2	12	476
53	221	236	20	67	1	5	10	560

Contd....

## Polling Station Level Election Results

**Winner, Runner-up and 3rd Party Position & Winning Margin According to Polling Stations in Nanguneri Assembly in Assembly Election (AE) under Tirunelveli Parliamentary Constituency in Tamil Nadu (2021)**

Polling Station Number	Winner Party	Winner Votes (%)	Runner-up Party	Runner-up Votes (%)	Winning Margin Votes (%)	Third Party	Third Party Votes (%)	Other Votes (%)
54	INC	187 (44.63)	AIADMK	180 (42.96)	7 (1.67)	NTK	30 (7.16)	22 (5.25)
55	INC	411 (62.18)	AIADMK	168 (25.42)	243 (36.76)	NTK	48 (7.26)	34 (5.14)
56	INC	224 (42.11)	AIADMK	223 (41.92)	1 (0.19)	NTK	48 (9.02)	37 (6.95)
57	INC	423 (84.77)	AIADMK	31 (6.21)	392 (78.56)	NTK	25 (5.01)	20 (4.01)
58	INC	224 (57.73)	AIADMK	90 (23.2)	134 (34.53)	NTK	62 (15.98)	12 (3.09)
58A	INC	277 (63.82)	AIADMK	106 (24.42)	171 (39.4)	NTK	32 (7.37)	19 (4.38)
59	INC	445 (72.01)	NTK	83 (13.43)	362 (58.58)	AIADMK	75 (12.14)	15 (2.43)
60	INC	433 (65.02)	NTK	107 (16.07)	326 (48.95)	AIADMK	104 (15.62)	22 (3.3)
61	AIADMK	192 (49.48)	INC	135 (34.79)	57 (14.69)	NTK	38 (9.79)	23 (5.93)
61A	AIADMK	246 (58.99)	INC	123 (29.5)	123 (29.49)	NTK	28 (6.71)	20 (4.8)
62	AIADMK	212 (41.73)	INC	185 (36.42)	27 (5.31)	NTK	61 (12.01)	50 (9.84)
63	AIADMK	278 (58.53)	INC	125 (26.32)	153 (32.21)	NTK	49 (10.32)	23 (4.84)
64	AIADMK	133 (37.25)	INC	119 (33.33)	14 (3.92)	NTK	39 (10.92)	66 (18.49)
64A	AIADMK	169 (43.11)	INC	159 (40.56)	10 (2.55)	AMMKMNKZ	21 (5.36)	43 (10.97)
65	INC	286 (53.36)	AIADMK	140 (26.12)	146 (27.24)	NTK	49 (9.14)	61 (11.38)
66	AIADMK	203 (38.3)	INC	187 (35.28)	16 (3.02)	AMMKMNKZ	82 (15.47)	58 (10.94)
67	INC	214 (44.12)	AIADMK	153 (31.55)	61 (12.57)	NTK	63 (12.99)	55 (11.34)
67A	INC	230 (51)	AIADMK	152 (33.7)	78 (17.3)	AMMKMNKZ	29 (6.43)	40 (8.87)
68	INC	249 (36.3)	AIADMK	218 (31.78)	31 (4.52)	AMMKMNKZ	133 (19.39)	86 (12.54)
69	INC	281 (50.91)	AIADMK	146 (26.45)	135 (24.46)	NTK	61 (11.05)	64 (11.59)
70	INC	291 (50.79)	AIADMK	131 (22.86)	160 (27.93)	NTK	77 (13.44)	74 (12.91)
71	INC	237 (50.11)	NTK	78 (16.49)	159 (33.62)	AMMKMNKZ	77 (16.28)	81 (17.12)
71A	INC	279 (59.87)	AIADMK	81 (17.38)	198 (42.49)	AMMKMNKZ	68 (14.59)	38 (8.15)
72	INC	262 (39.28)	AMMKMNKZ	182 (27.29)	80 (11.99)	AIADMK	152 (22.79)	71 (10.64)
73	INC	173 (42.4)	AIADMK	115 (28.19)	58 (14.21)	NTK	64 (15.69)	56 (13.73)
73A	INC	171 (43.4)	AIADMK	129 (32.74)	42 (10.66)	AMMKMNKZ	51 (12.94)	43 (10.91)
74	INC	157 (36.51)	AIADMK	146 (33.95)	11 (2.56)	AMMKMNKZ	77 (17.91)	50 (11.63)
75	AMMKMNKZ	190 (32.59)	INC	175 (30.02)	15 (2.57)	AIADMK	166 (28.47)	52 (8.92)
76	INC	177 (50.86)	AIADMK	83 (23.85)	94 (27.01)	NTK	43 (12.36)	45 (12.93)
76A	INC	256 (66.32)	AIADMK	75 (19.43)	181 (46.89)	AMMKMNKZ	24 (6.22)	31 (8.03)
77	INC	304 (46.99)	AIADMK	276 (42.66)	28 (4.33)	NTK	51 (7.88)	16 (2.47)
78	INC	210 (45.36)	AIADMK	153 (33.05)	57 (12.31)	NTK	75 (16.2)	25 (5.4)
78A	INC	247 (49.7)	AIADMK	181 (36.42)	66 (13.28)	NTK	48 (9.66)	21 (4.23)
79	INC	65 (40.88)	AIADMK	49 (30.82)	16 (10.06)	NTK	35 (22.01)	10 (6.29)
80	INC	312 (52.88)	AIADMK	180 (30.51)	132 (22.37)	NTK	79 (13.39)	19 (3.22)

Contd....

## Socio-Economic Amenities - Rural

### Access to Education Facilities

Particulars	Number of Villages (% of Population)				
	Available	Not Available	If Not Available (Distance of Nearest Facility)		
			A	B	C
Govt. Primary School	77 (88)	20 (12)	9 (2)	2 (0)	0 (0)
Private Primary School	36 (55)	61 (45)	0 (0)	0 (0)	0 (0)
Govt. Middle School	36 (55)	61 (45)	36 (20)	14 (11)	0 (0)
Private Middle School	25 (40)	72 (60)	0 (0)	0 (0)	0 (0)
Govt. Secondary School	16 (33)	81 (67)	25 (16)	35 (28)	1 (1)
Private Secondary School	14 (25)	83 (75)	9 (7)	4 (6)	0 (0)
Govt. Senior Secondary School	10 (23)	87 (77)	32 (22)	45 (41)	5 (6)
Private Senior Secondary School	7 (11)	90 (89)	0 (0)	0 (0)	0 (0)
Govt. Arts and Science Degree College	0 (0)	97 (100)	2 (3)	22 (23)	25 (27)
Private Arts and Science Degree College	3 (7)	94 (93)	11 (9)	22 (16)	12 (16)
Govt. Engineering College	0 (0)	97 (100)	3 (4)	17 (19)	30 (25)
Private Engineering College	3 (4)	94 (96)	7 (5)	11 (10)	26 (34)
Govt. Medicine College	0 (0)	97 (100)	0 (0)	22 (24)	75 (76)
Private Medicine College	0 (0)	97 (100)	0 (0)	0 (0)	0 (0)
Govt. Management Institute	0 (0)	97 (100)	1 (1)	10 (12)	56 (60)
Private Management Institute	1 (1)	96 (99)	2 (2)	15 (14)	12 (11)
Govt. Polytechnic	1 (3)	96 (97)	7 (5)	6 (9)	18 (13)
Private Polytechnic	2 (4)	95 (96)	7 (6)	17 (12)	39 (48)
Govt. Vocational Training School/ITI	0 (0)	97 (100)	4 (4)	7 (9)	17 (14)
Private Vocational Training School/ITI	1 (1)	96 (99)	4 (4)	23 (24)	41 (45)
Govt. Non Formal Training Centre	78 (88)	19 (12)	17 (11)	2 (1)	0 (0)
Private Non Formal Training Centre	0 (0)	97 (100)	0 (0)	0 (0)	0 (0)
Govt. School For Disabled	0 (0)	97 (100)	2 (3)	18 (20)	48 (48)
Private School For Disabled	0 (0)	97 (100)	0 (0)	7 (8)	22 (21)
Government Others	0 (0)	97 (100)	0 (0)	0 (0)	0 (0)
Private Others	2 (6)	95 (94)	0 (0)	0 (0)	0 (0)

Note : Distance A : Less than 5 km; B : Between 5-10 km; C : 10+ km.; Source : Data Analysis is based on 2011 Census.

## DISCLAIMER

The Terms of Use and Disclaimer of Datanet India Private Limited (hereinafter referred to as "Datanet") for use of this analysis report of **Nanguneri Assembly Constituency (Nanguneri Vidhan Sabha) :-**

1. **Assembly Factbook™** is a Registered Trade Mark owned by Datanet.
2. All the maps are sketched and graphical representation only and have not been drawn to the scale and also not to represent the actual geographical area or boundary of the unit.
3. The data for the aforesaid analysis is based on authentic sources and has been culled from the various publications of Census, CSO and NSSO for district and block level data, various central and state government departments, Central & State Elections Commissions and the concerned Returning Officers' releases, Electoral Rolls, Election results and allied publications, internal assessment, surveys, estimates and analysis. Therefore, certain adjustment of data at micro level may have been done to arrive closer to the macro data.
4. Data have been provided on an "As Is" and "As AVAILABLE" basis
5. The colours shown in the maps or diagram and charts of a particular party, alliance or AC are indicative and do not represent them.
6. This publication which includes maps, sheets, graphs and data would be the property under copyright of Datanet only. The user may use these for its internal study, analysis and research purposes. It's public display, re-selling or any commercial uses by the user are not allowed.
7. Datanet has taken due care and caution in compilation and processing of data and allied information, but does not guarantee the accuracy, adequacy or completeness of any information/analysis and will be not responsible for any errors or omissions or for the results obtained from the use of such information/analysis.
8. All the contents for the publication have been culled from various authentic sources and Datanet reasonably believes such sources to be reliable, but does not make any representations, express or implied as to the accuracy or fitness of use of such information. The information or contents of the information/analysis do not constitute advice and should not be relied upon in making (or refraining from making) any decision. Any reliance placed upon the information provided by Datanet is the sole responsibility and strictly at the user's risk.
9. In no event will Datanet be liable for any damages (including, without limitation, damages for loss of business projects, or loss of profits) arising in contract, tort or otherwise from the use of or inability to use any of its contents, or from any action taken (or refrained from being taken) as a result of using the analysis or any of its contents. Datanet its directors, owners, editors, officials, employees, distributor and agents or any associate will not be liable for any errors in the information contained or any consequences arising from the use of the contents of the provided information/analysis.
10. If any provision of these terms and conditions is held invalid or illegal or unenforceable for any reason by any court of competent jurisdiction, such provision shall be severed and the remainder of provisions of the terms and conditions shall continue in full force and effect as if the Term of Use had been executed with the invalid, illegal or unenforceable provision eliminated.
11. If there are any discrepancies in the information provided, please bring it to attention of Datanet for suitable rectification measures.



**Buy Online This Complete Book At**  
**Datanet India eBooks Store**

[www.indiastatpublications.com](http://www.indiastatpublications.com)

or go directly at

[http://www.indiastatpublications.com/  
Assembly\\_factbook/Tamil\\_Nadu/Tirunelveli/ Nanguneri](http://www.indiastatpublications.com/Assembly_factbook/Tamil_Nadu/Tirunelveli/Nanguneri)

 **india**stat**elections**

