



VISIT   
NAMUR

EN

OFFICE DU TOURISME

TOURIST  
GUIDE  
2018



© B. D'Allimonte - OTN



Wallonia.be  
TOURISM

[www.visitnamur.eu](http://www.visitnamur.eu)



NAMUR  
CAPITALE

# GRAND CASINO DE NAMUR

MORE THAN JUST A CASINO

24  
/24

FIRST VISIT?

**€75\***  
**OFFERED**



**Roulette, Blackjack, Slot machines, Poker,  
Sports betting, Restaurant, Hotel & Bar.**

[WWW.CASINODENAMUR.BE](http://WWW.CASINODENAMUR.BE)

\*Coupons with advantages for a value of € 75. Present this coupon in the Grand Casino de Namur with your first visit. One coupon per person. Valid up until 31 December 2018.

Avenue Baron de Moreau B-5000 Namur +32 (0) 81 22 30 21 - Identity card mandatory

PLAY  
SAFE.be 21+ PLAY RESPONSIBLY

**B** HOTEL  
BEAUREGARD  
NAMUR

**Circus** GRAND  
CASINO  
NAMUR

## Welcome to Namur!

You have chosen to visit our beautiful city and you will not regret it... Namur boasts the charm and tranquillity of a city tucked away at the heart of the confluence between the Meuse and Sambre rivers, protected by its Citadel and surrounded by a magnificently green setting.

Namur, a human-scale city which is a good place to live, is an invitation to discovery, tasting, strolling, relaxation and, who knows, adventures...

It is here, the capital of Wallonia and a place of contrasts, that traditions, heritage and the history of the old quarters or the citadel rub shoulders with the quirkiness of a visit in a rickshaw, a meal or night "on the water" or a stand-up paddleboard session on the Meuse River...

We wish you a superb visit and enjoyable walks but also nice discoveries combining charm and out of the ordinary activities in Namur in 2018!

Patricia Grandchamps - Councillor in charge of Tourism

Amélie Lefèvre - Director, Namur Tourist Office





## TOURIST INFORMATION OFFICE

PLACE DE LA STATION

Tel. : +32 81 24 64 49

Fax : +32 81 24 71 10

[www.visitnamur.eu](http://www.visitnamur.eu)

[info@visitnamur.eu](mailto:info@visitnamur.eu)

Open during high season,

from 31/03/18 to 30/09/18, 7 days a week,

from 9.30 am to 6.00 pm.

Open in low season, from 9.30 to 6.00 pm.

and from 11.00 am to 3.00 pm on Sundays.

The Tourist Information Office will be closed

on 25 /12/18 and 01/01/19.



[visitnamur](https://www.facebook.com/visitnamur)



[visit\\_namur](https://www.instagram.com/visit_namur)

# FOLLOW THE GUIDE...

- 6 THE ESSENTIALS OF NAMUR
- 8 THE CITADEL OF NAMUR
- 14 A CONFLUENCE RIGHT IN THE MIDDLE OF THE CITY...
- 18 SUPERB DISCOVERIES LEFT, RIGHT AND CENTRE
  - 19 READY FOR A QUICK VISIT?
  - 23 OUR ATTRACTIONS
  - 25 OUR MUSEUMS
- 28 LET'S TAKE THE TIME TO ENJOY LIFE...
  - 30 GASTRONOMY
  - 32 SHOPPING
- 34 WHAT'S ON... EVENTS
- 40 SLEEP TO MAKE ROOM FOR DREAMS
- 52 CITY MAP
- 55 ACCESS & USEFUL INFORMATION

Amazing  
**Wallonia**  
2018

EDITOR IN CHIEF: CITY OF NAMUR, 5000 NAMUR  
PAGE SETTING: B. DAVISTER

EDITION 2018





# THE ESSENTIALS OF NAMUR

Do you need a few suggestions to start your visit? Of course you do! Here are our favourite attractions, which you must absolutely not miss! If you want to find out more, then continue reading but most importantly, do not hesitate to come and see us at the Tourist Information Office!

## STORM THE CITADEL! 1

One of the biggest fortifications in Europe, with 2000 years of history and a bright future ahead, is waiting to be discovered at the Visitor Centre (p.8).

## OUR RICKSHAWS... 2

An original way to get about town.(p.19).

## WALK ON WATER ... 3

At the Capitainerie [Harbourmaster's Office] or stroll on the floating terrace ... Stand up paddle, idleness... (p.15 - 16).

## THE MEUSE/SAMBRE CONFLUENCE 4

The meeting of the two magnificent Sambre and Meuse Valleys (p.14)

## OLD QUARTERS... 5

Yearning for some intimate atmosphere full of charm? Take a walk through the heart of the old quarters... narrow pedestrian streets that give onto fine squares (p.18).

## OUR MUSEUMS... 6

- Félicien Rops, the museum of the scandalous 19th century artistic genius (p.25).
- The delicious Strawberry Museum in Wépion (p.26).





# THE CITADEL OF NAMUR

**2000 years of history at the heart of Europe...**

At the confluence of the Sambre and Meuse rivers, the Citadel of Namur majestically overlooks the city. Together, they have transcended many ages!



*Built on a particularly impressive rocky outcrop, this exceptional heritage site has successfully conserved the traces of each period during its 2000 years of history. The citadel was the residence of the Counts of Namur in the Middle Ages before being transformed into a holiday home for King Léopold II. Today it is a hotspot for events, guided tours and walks through a green setting offering spectacular views of the city.*

**VISITS**



**Visit the tunnels:**

**A newly designed guided tour!**

On inspection of the Citadel, Napoleon said to have called it "Europe's biggest ant hill" due to its considerable network of tunnels.

Discover 500 metres of restored tunnels thanks to an immersive guided tour that will take you to the heart of the Citadel's history with sound and light effects.

**The Terra Nova Visitor Centre**

No less than 2000 years of urban and military history are presented via the history of Namur and its citadel, thanks to a dynamic and educational exhibition design.

**Visit the domain in the little tourist train:**

Enjoy this visit with commentary to admire the magnificent panoramic views of Namur and the Meuse Valley.



© Vincent Ferooz, Pixel Konradto



© V. Poppe



© Citadel.le



© Vincent Ferooz, Pixel Komando



© Vincent Ferooz, Pixel Komando

## OPENING TIMES

The Terra Nova tourist information centre is open 7 days a week from 1st April to 30th September, from 10.00 am to 6.00 pm. Visits are possible from 10.30 am to 5.30 pm, starting at Terra Nova.

In the low season, from 1st October to 31st March, the reception is open every day, from 10.00 am to 5.00 pm except on Monday (from 10.00 am to 6.00 pm in October). Open when public holidays fall on a Monday during the school holidays.

Annual closure: from 24th December 2018 to 1st January 2019.

## ADMISSION PRICES

- Guided tour: tunnels: € 8  
Train: € 6
- Unrestricted access to the Visitor Centre: € 4
- Citadel Pass: € 13 (all activities)
- Reduced prices for students, seniors and groups.

## ACCESS

**On foot** : Climb the steps and follow arrows leading to Terra Nova.  
Access from Rue Notre Dame. Location on the map: C4 (see page 52)  
Please note: for good walkers only!

**By car or by coach** : via Avenue Jean 1er.  
Car park on the Esplanade.

« **The Citad'In** » : Shuttle pedestrians can take at the foot of the Citadel (behind the Walloon Parliament – Spiral of Time). A purchased ticket entitles the visitor admission to the various tourist places of the site. Consult the schedule in our information centre.  
Price : €2

For any further information on the visits and opening hours, see the web site:

[www.citadelle.namur.be](http://www.citadelle.namur.be)  
[info@citadelle.namur.be](mailto:info@citadelle.namur.be)  
+32 81 24 73 70



## DISCOVER ALSO

### GUY DELFORGE PERFUMERY

Route Merveilleuse, 60 - 5000 Namur

Tel. + 32 81 22 12 19

info@delforge.com - www.delforge.com

Tucked in the 16th century galleries of the Citadel, this unique workshop in Northern Europe unveils all its secrets and presents the perfume-making phases.

Exhibition and sale: Free admission year round. Visit to the workshop: €3.50 - on Saturday (except on official holidays), and Monday to Saturday at 3:30 PM during the school holidays (except on official holidays).



© FTPN - Bossioy

### QUEEN FABIOLA AMUSEMENT PARK

Rond-point Michel Thonard, 1

5000 Namur

Tel. + 32 81 73 84 13

parf@ville.namur.be - www.parf.be

Atop the Citadel of Namur, in a listed green setting, the Queen Fabiola Amusement Park offers many opportunities for fun and games for children of all ages (playground, miniature golf, go-karts, inflatable castles, etc.).

Open: 31 March to 14 October.

Price: €3

Children under one metre tall: free.



© B. DAImond - OTN

### MADE IN NAMUR

#### TERRA NOVA

Route Merveilleuse, 60 - 5000 Namur

Tel. + 32 81 24 73 70

Come and discover the flavours of Namur at Made in Namur! You will find fresh produce made by local producers, to taste on-site or takeaway.



© V. Poppe



*Installed since 2015 at the place called "Bonnet de prêtre", Searching for Utopia, the monumental work by Jan Fabre, watches over the city.*



# A CONFLUENCE RIGHT IN THE MIDDLE OF THE CITY...

It is quite rare and deserves to be underscored!  
The Rivers Sambre and Meuse converge there, affording an uninterrupted view below the ramparts of the fortress. Visitors can admire from end to end the Elysette [Walloon government] which is almost opposite the Hospice Saint-Gilles, the Parliament of Wallonia.

## CHARLIE'S CAPITAINERIE : LIFE ON THE WATER!

Enjoy a drink at the floating terrace in a retro-chic and friendly environment. Boaters looking for rest, strollers, seekers of thrills or relaxation on the water... they are bound to get their fill! You too should go and take part in the many athletic (world championship) and cultural activities, and every type of event on water you can think of.

**Port of Jambes**

**Boulevard de Meuse**

**5100 Jambes**

**Open daily from mid-April  
to mid-October, as of 9:00 AM**

**+ 32 476 23 31 42**

**[www.lacapitainerie.be](http://www.lacapitainerie.be)**

**[info@lacapitainerie.be](mailto:info@lacapitainerie.be)**

**[www.facebook.com/charliescapitainerie](https://www.facebook.com/charliescapitainerie)**

SEVERAL AQUATIC ACTIVITIES  
ARE AVAILABLE YEAR ROUND,  
AND ARE ACCESSIBLE TO ALL:

STAND UP PADDLEBOARD, PADDLEBOARD POLO,  
PADDLEBOARD YOGA



BLOB JUMP (TRAMPOLINE CUSHION),



CATAMOSAN BOATS  
(LICENCE-FREE BOATS, 4 TO 12 PLACES)



AND MANY, MANY OTHERS...



© Simon Fusiller - SKUDS



© Simon Fusiller - SKUDS



© Simon Fusiller - SKUDS



© Simon Fusiller - SKUDS



## WATER DELIGHTS!

Namur is a city by the water, snuggled at the crossing of the magnificent Meuse and Sambre valleys. Whatever you are looking for – discovery, nautical sports, relaxing stay, trip or romantic evening -- you are bound to find your fill here.

*(Consult our offer of accommodation by the water on page 44)*

### LA CROISIÈRE MOSANE

The Mosan cruise proposes a 50-minute cruise with commentary between the three locks in Namur, or a 1 hour 45 minute cruise between Namur and Wépion.

**Tel. : +32 81 24 64 49**

**[www.croisieremosane.be](http://www.croisieremosane.be)**

### LA CUISINE DU BELRIVE

Moored at the foot of Namur Citadel, this old barge turned into a bar-restaurant invites you to enjoy a refined cuisine.

**Tel. : +32 81 22 65 79**

**[www.lacuisinedubelrive.be](http://www.lacuisinedubelrive.be)**

### NAMOURETTES

These small, retro-style whalers will take you from one bank of the Sambre and the Meuse to the other. They operate every day in July and August, as well as on weekends from June to September.

**Tel. : +32 81 24 64 49**

**[www.visitnamur.eu](http://www.visitnamur.eu)**



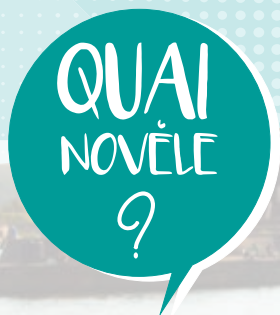


# NAMUR

## SUMMER AT THE WATER'S EDGE



## ESTIVAL NAMUR



01/06 TO 10/09

THE EPHEMERAL BAR

EVENTS

RELAXATION ZONE

CONCERTS



[WWW.CAPESTIVAL.BE](http://WWW.CAPESTIVAL.BE)



18

# SUPERB DISCOVERIES LEFT, RIGHT AND CENTRE...

In Namur, anything goes to take you from one discovery to another, according to your desires: with or without a guide, set off on an adventure on foot, by bicycle, in a rickshaw, on a Segway, by boat or even by stand-up paddleboard...

## READY FOR A QUICK VISIT?

### GUIDED TOURS

#### VISIT BY RICKSHAW

Discover Namur in an original way: climb aboard a rickshaw and enjoy a circuit with commentary (by your driver!) at the heart of the Walloon capital.

There are three routes to choose from:

- **“The tale of the old quarters”**  
30 minutes / 1 person: € 7 – 2 people: € 10  
A pleasant ride that will take you on a discovery of the historic city centre, its heritage and many anecdotes, through its side streets with their special atmosphere and charm.
- **“Between Sambre and Meuse”**  
60 minutes / 1person: € 10 – 2 people: € 16  
In addition to discovering the historic city centre and its exceptional heritage, your driver will take you along the quays to show you the charms of the confluence and the banks of the river.
- **“Strawberries & isles on the Meuse”**  
60 minutes / 1person: € 10 – 2 people: € 16  
After a short visit to the heart of Namur’s history, you will follow the Meuse River towards the village of Wépion to discover its history and its famous scarlet coloured strawberries.



© W&P - Denis Erroyaux

#### OUR RICKSHAWS

- 31/3 to 15/6: On weekends and public holidays
- 16/6 to 13/9: every day
- 17/9 to 30/9: On weekends
- 1/12 to 5/1/19: on Saturdays

Departure from Place de l'Ange.  
Available in French, Dutch, English or German.

Bookings possible via  
<http://tours.visitnamur.eu> or  
by calling Information Tourist Office :  
+32 81 24 64 49

## VISIT OF THE “OLD QUARTERS”

Our guide will take you **to the heart of the city and its history**, to share the special atmosphere and charm of the old quarters' side streets...

- **Departure from the Tourist Information Office**
- **On Mondays in May, June and September**  
(except on 17/09/2018) at 2.30 pm
- **Every day in July and August at 2.30 pm**  
(except on Thursdays)
- **Price: € 4 per person. Free for under-12y**

[www.visitnamur.eu](http://www.visitnamur.eu)

## THEMED VISITS

**On foot, bicycle or Segway; historical or gastronomic**

In collaboration with Guides Touristiques du Namurois, the Namur Tourist Information Office invites you to (re)discover the city and its surroundings, based on an original theme.

**All the information can be found in our “Themed guided tours” brochure or on [www.visitnamur.eu](http://www.visitnamur.eu)**





## AT YOUR OWN PACE...

### DISCOVERY CIRCUITS

The Tourist Information Office proposes two circuits accessible to all.

- **For a stroll:** the architectural wealth and finest places in the city centre.
- **For a bicycle ride:** a loop along the banks of the Meuse and the Sambre. Take advantage of your ride to enjoy a picnic or visit one of the many restaurants that you will find on your way...

### For sale at the Tourist Information Office

These routes are also available for free in audio-guide version via the smartphone application [izi.TRAVEL](#)





## OUR ELECTRIC BICYCLES

An electric bicycle is a capital idea to enjoy a ride along the Meuse for one or more days without overexerting yourself – inquire at the Tourist Information Centre where they can be rented.

8 speeds, Bosch motor, equipped with lock and bags.

½ day: €16 / 1 day: €22

Per additional day: +€20

Deposit for rental for more than one day: €300.

## RAVEL

Namur is also at the crossing point of the itineraries of RAVeL 1 (Commines-Visé) and 2 (Hoegaarden-Mariembourg). The first of these “Réseaux Autonomes de Voies Lentes” [Autonomous Slow Lane Networks] links **Commines and Visé** along the Sambre and Meuse Valleys (**more than 400 km**) while the second links **Hoegaarden and Mariembourg (169 km)**.

The “Namur-Dinant” leg is a remarkable itinerary.

<http://ravel.wallonie.be>

## 1815-2015

### ROUTE OF GROUCHY’S ARMY

After the battle of Waterloo, Marshal Emanuel de Grouchy had to save his 34,000 men from the rout. So they set off to reach Givet, via Namur, to bring men, horses and arms to safety. A commemorative plaque recalls the fierce fighting that took place in Namur, at the north entrance of Louise-Marie Park.

A free leaflet and a website provide details on this itinerary.

[www.napoleon-grouchy-1815.com](http://www.napoleon-grouchy-1815.com)



## OUR ATTRACTIONS...

 Activities for children

 Favourites



### ♥ SEGWAYNAM - SEGWAY RENTAL

Discover Namur in an original manner.

Tel. : +32 475 66 14 47

[www.segwaynam.be](http://www.segwaynam.be)

### CROISIÈRE MOSANE See p. 50

Cruises on the Meuse and Sambre, and to Wépion. Tickets sold at the Archaeological Museum.

Rue du Pont, 21 - 5000 Namur

Tel. : +32 81 24 64 49

[www.croisieremosane.be](http://www.croisieremosane.be)

### CASINO OF NAMUR See p.2

Avenue Baron de Moreau, 1 - 5000 Namur

Tél : +32 81 22 30 21

[www.casinodenamur.be](http://www.casinodenamur.be)

### ♥ GUY DELFORGE PERFUMERY

Citadel of Namur - p. 12 and 56

### ♥ ENIGMALOCK

Locked in a room with your team (2 to 5 people) you have 60 minutes to solve a series of riddles and regain your freedom!

Rue des Houblonnières, 36

5000 Namur

Tel. +32 485 06 30 35

[www.enigmalock.be](http://www.enigmalock.be)

### BOWLING OF NAMUR

16 lanes, Playground, Laser Game, Stone-plate grill and snacks...

Chaussée de Perwez, 251

5002 Saint-Servais

Tel. : +32 81 73 10 11

[www.bowlingsquashnamur.be](http://www.bowlingsquashnamur.be)



### QUEEN FABIOLA AMUSEMENT PARK

Citadel of Namur - p. 12



### GOOLFY - MINI GOLF INDOOR

Indoor miniature golf laid out in a fluorescent light ambience.

Complex Acinapolis

Rue de la Gare fleurie, 16 - 5100 Jambes

Tel. : +32 81 30 94 00

[www.goolfy.com](http://www.goolfy.com)



### PIROUETTE - RECREATION CENTRE

1200 m2 facility for the greatest pleasure of the children ...

Chaussée de Liège, 159 - 5100 Jambes

Tel. : +32 81 30 13 01

[www.pirouette.be](http://www.pirouette.be)

### ROUEMENT GOLF COURSE

A magnificent 18-hole golf course, just 12 minutes from the city centre.

Chemin du Beauvallon, 45

5170 Profondeville

Tel. : +32 81 41 21 31

[www.golfderougement.be](http://www.golfderougement.be)

### FORT D'EMINES

One of the 9 forts that made up the former fortifications of Namur, built at the end of the 19th century under the direction of General Brialmont. Visits, activities, etc. Booking is compulsory.

Rue du Fort d'Emines

5003 Saint Marc

Tél: + 32 470 252 865

[www.patrimoineculturel.org](http://www.patrimoineculturel.org)



### ♥ RICKSHAW

See page 19

### NAMUR AERODROME

A facility dedicated to the passion for aviation where conviviality is the norm.

Rue Capitaine Aviateur Jacquet, 44

5020 Suarlée

Tel. : +32 495 28 52 39

[www.ae-motion.be](http://www.ae-motion.be)

### ♥ BREWERY "DE L'ECHASSE"

Housed in an old brewery dating from 1812, the Brasserie de l'Echasse created the deliciously refreshing beer "La Houppé." Visit by appointment. Visit every second Sunday of the month.

Avenue de la Plante 49

5000 Namur

Tel. : + 32 475 38 16 64

[www.echasse.be](http://www.echasse.be)

### ♥ BREWERY "DU CLOCHER"

The former Piroy church is dedicated to brewing the following beers: "La Philomène" and "L'Hoptimale".

Visits by appointment.

Rue du Petit-Babin, 156

5020 Malonne

Tel. : +32 471 10 18 28

[www.brasseriecluclocher.be](http://www.brasseriecluclocher.be)



## OUR MUSEUMS...



© B. D'Alimonte - OTN

### FELICIEN ROPS MUSEUM PROVINCE OF NAMUR

Rue Fumal, 12 - 5000 Namur

Tél : +32 81 77 67 55

[www.museerops.be](http://www.museerops.be)

Situated in the heart of Old Namur, the Félicien Rops provincial museum presents the work of this 19th century artist, draughtsman, engraver, illustrator and unclassifiable painter.

*Prices: €3 – With exhibition: €5  
Reduced rates for students and senior citizens.*

*Free admission for children under 12.*

*Open Tuesday to Sunday, 10:00 AM to 6:00 PM.*

*Open every day in July and August*

### PROVINCIAL MUSEUM OF ANCIENT ART FROM THE NAMUR REGION – OI- GNIES TREASURE (TREM.A)

Rue de Fer, 24 - 5000 Namur

Tél : +32 81 77 67 54

[www.museedesartsanciens.be](http://www.museedesartsanciens.be)

Stuccos listed as exceptional Walloon Heritage (18th Century). Collections of works of art from the Middle Ages and the Renaissance: Oignies Treasure (13th century silverware), paintings by Henri Bles (16th century).

*Prices: €3 – With exhibition €5.*

*Reduced rates for children and senior citizens  
Free admission for children under 12.*

*Open from 10:00 AM to 6:00 PM. Closed on Monday.*



## THE STRAWBERRY MUSEUM THE GARDEN OF SMALL FRUIT

Chaussée de Dinant, 1037 - 5100 Wépion  
Tel. : +32 81 46 20 07  
[www.museedelafraise.eu](http://www.museedelafraise.eu)

The strawberry in all its forms: history, culture, trade and delicacies. Strawberry producers' shop and tasting.

*Admission: € 5. Reduced prices for children, seniors and students.*

*From 01/04 to 30/09, from Tuesday to Sunday, from 11.00 AM to 6.00 PM.*

*From 01/10 to 31/03, from Tuesday to Friday, from 1.00 to 5.00 PM.*

*Free on the first Sunday of each month.*



© OTN

## ARCHAEOLOGICAL MUSEUM

Rue du Pont, 21 - 5000 Namur  
Tel. : +32 81 23 16 31

Currently housed in the "Halle al'Chair", the former meat market, and listed as major patrimony of Wallonia, the museum boasts a rich collection of pre-historic and Gallo-Roman antiquities.

*Admission free*

*Open from 10:00 AM to 5:00 PM*

*Closed on Monday and between Christmas and New Year's.*

## BROTHER MUTIEN-MARIE MUSEUM

Fond de Malonne , 117 - 5020 Malonne  
Tél : +32 81 44 51 65

The Museum pays poignant homage to this 19th century clergyman who devoted his life to praying and teaching. Discover photos, personal objects, clothing and the audiovisual room.

*Admission free*

*Open year round, from 9:00 AM to 6:00 PM.*



Establishments labelled "Bicycles welcome"

### COMPUTER MUSEUM NAM-IP (NUMERICAL ARTEFACTS MUSEUM- INFORMATIQUE PIONNIÈRE)

Rue Henri Bles, 192A - 5000 Namur  
Tel. : +32 (0) 81.34.64.99  
[www.nam-ip.be](http://www.nam-ip.be)  
[animation@nam-ip.be](mailto:animation@nam-ip.be)

Discover the heritage and history of information technology in Belgium, the roots of the new digital culture.

*Admission: € 8*

*From November to March, from Monday to Friday, from 10.00 AM to 5.00 PM.*

*From April to October, from Tuesday to Saturday, from 10.00 AM to 5.00 PM and the first Sunday of the month from 2.00 to 5.00 PM.*

*Guided tours possible.*

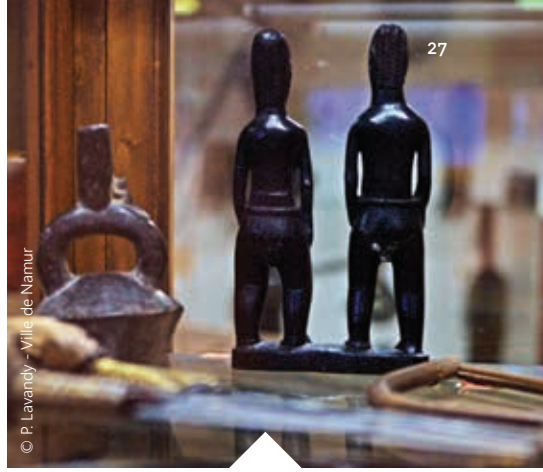
### COMMANDO MUSEUM

Rue J. Durieux, 80 - 5020 Flawinne  
Tél : +32 2 442 10 13 - 10  
[www.cdomuseum.be](http://www.cdomuseum.be)

The Museum illustrates the history of Belgian commandos since 1942, when the corps was created in the United Kingdom. You will see equipment, machinery, weapons and vehicles used by the Commandos throughout their glorious history.

*Admission free.*

*Open every Saturday, from 1:00 to 6:00 PM.*



© P. Lavandy - Ville de Namur

### AFRICAN MUSEUM

Rue du 1<sup>er</sup> Lanciers, 1 - 5000 Namur  
Tel. : +32 81 23 13 83  
[www.museeafricainnamur.be](http://www.museeafricainnamur.be)

Unique in Wallonia, the Namur African Museum attests to the Belgo-African relations established in the past and in the present, by featuring a collection of objects and documents.

*Price: €4 – Reduced rates for students and senior citizens.*

*Open from 2:00 to 5:00 PM.*

*Closed on Monday, Saturday and official holidays.*

### ENGINEERING MUSEUM

Chemin du Masuage - 5100 Jambes  
Tél : +32 2 44 28 395  
[www.geniemus.be](http://www.geniemus.be)

The history of military engineering in Belgium, from Vauban to the present. Many documents, objects, uniforms and models.

Exhibition of old vehicles as well road construction, bridging, and combat machinery and military bridges.

*Price: €4*

*Open on Wednesdays, from 1:00 to 5:00 PM*



# LET'S TAKE THE TIME TO ENJOY LIFE ...

Ready for a spin through narrow, winding pedestrian streets peppered with ever so typical, charming windows? You will come across boutiques, restaurants, and craftsmen... The art of living has cult following in the capital of Wallonia.



© B. D'Almonite - OTN



© WBT - Denis Eroyaux



© WBT - Denis Eroyaux



© WBT - Gabriele Croppi

Namur is the capital but also the heart of Wallonia... and if there's one thing its inhabitants do not lack, it's heart! And we can prove it by giving you a list of our favourite places, where we like to go and share our legendary art of living.



© WBT - Denis Eroyaux



© WBT - Denis Eroyaux



© WBT - Denis Eroyaux



© E. Valon / OTN



## DELICACIES NOT TO BE MISSED...

A brief stopover at the **Belgo-Belge bistro**, some discoveries in the **Empreinte Belge shop**, or delicatessen specialities and spirits at the **Caves de Wallonie**, gastronomy à la carte or in a set menu at the **Espièglerie**, or tapas at the **Bouchon Namurois**, a nice little dish at the **Temps de Cerises**, a good glass of wine at **Vino Vino**, and matching fare! And then there is the double location for rest and the senses... **The Royal Snail design hotel and the Agathopède restaurant**, etc., etc... Namur is unquestionably the capital of delicacy and refinement!

## UP FOR SOMETHING "SWEET"?

Try the **Wepion strawberries**, bursting with sugar and a bright red colour. You will not be able to resist either the sweet and crunchy taste of caramel coated nuts known as "**Biétrumés**," whose name is inspired by a colourful character of Namur who's quite a joker. These little marvels can be enjoyed at the **Maison des desserts**, the high delicacy cavern in Namur. The ideal accompaniment for these delicacies is a nice coffee from the **Maison Delahaut** where coffee beans are roasted several times a day right in the shop before your very eyes.



## OR PERHAPS SOMETHING “SALTY?”

Try the “**Petits-Gris de Namur**” [snails] that feature prominently in local gastronomy and are also the symbol of the city. Regale yourself with **avisance** (minced meat in puff pastry), served hot or warm. To slake your thirst, taste a “**Blanche de Namur**” (**Brasserie du Bocq**), a “**Houpe**” (**Brasserie de l’Echasse**) or one of the wine vintages from the **Mosan Valley** (**Domaine du Chenoy, Ry d’Argent, Château Bon Baron**) – and make sure you do not overlook the traditional “**Péket**” (juniper) which has its finest hour during the traditional “**Fêtes de Wallonie**” [Wallonia Festivities].



© FTPN - BOSSIROY

Whether sweet or salty, our delicacies are to enjoy or take away at **Made in Namur**, a self-service outlet featuring a full range of local and regional products.



## WANT TO GO SHOPPING?

**Between the Rue de Fer and l'Espace de l'Ange**, you will have the impression that you are in an open air shopping gallery. At the heart of the old quarters of the city, let yourself be tempted by our little independent shops, whether vintage, classic, trendy or sophisticated, in the heart of the city centre: you will be sure to receive a warm welcome...

## RELAX ...

"A healthy mind in a healthy body"... **Relax and enjoy the wellness facilities on offer in Namur.** Whether in a hotel, a guesthouse, or day centre, the choice is yours. The opportunities are legion, and range from the traditional bubble bath to massages and other types of care treatment with... chocolate.





## OUR FAVOURITE PLACES

### L'Agathopède and The Royal Snail Hotel

Gastronomic restaurant and design hotel  
Avenue de la Plante, 23 // +32 81 57 00 23  
[www.theroyalsnail.com](http://www.theroyalsnail.com)

### L'Espèglerie & le Grill des Tanneurs

Hotel, gastronomic restaurant and Grill  
Rue des Tanneries, 13 // +32 81 24 00 24  
[www.tanneurs.com](http://www.tanneurs.com)

### Le Bouchon Namurois

Wine bar – gastronomic tapas  
Rue Haute Marcelle, 18 // +32 81 22 85 70  
[www.lebouchonnamurois.be](http://www.lebouchonnamurois.be)

### Le Temps des Cerises

Restaurant featuring local cuisine  
Rue des Brasseurs, 22 // +32 81 22 53 26  
[www.cerises.be](http://www.cerises.be)

### Brasserie La Reine Blanche

Local Belgian cuisine  
Route Merveilleuse, 50 // +32 81 34 46 12  
[www.reineblanche.be](http://www.reineblanche.be)

### La Maison des Desserts

Pastry shop & restaurant  
Rue Haute Marcelle, 17 // +32 81 22 74 51  
[www.maison-des-desserts.be](http://www.maison-des-desserts.be)

### Vino Vino

Wine bar  
Rue des Brasseurs 61 // +32 81 26 00 51  
<http://vinovino.be>

### De Hucorne Fronville

Bietrumé, Fély, sweets and chocolates  
Rue de Fer, 5 // +32 81 22 23 72  
[www.maison-des-desserts.be](http://www.maison-des-desserts.be)

### Cafés Delahaut

Coffe bean roasting  
Rue de l'Ange, 21 // +32 81 22 11 58  
[www.cafesdelahaut.be](http://www.cafesdelahaut.be)

### La Cave de Wallonie

Regional products  
Rue de la Halle, 6 // +81 22 06 83  
[www.edzdiffusion.be/coteterroir.html](http://www.edzdiffusion.be/coteterroir.html)

### Grafé Lecocq

Wine store  
Place St Aubain, 9 // + 32 81 22 43 15  
[www.grafe.be](http://www.grafe.be)

### L'Empreinte Belge

Arts and crafts, gifts, Belgian specialities and snacks  
Rue Godefroid, 22// +32 474 06 38 95  
<http://lempreintebelge.wixsite.com/lempreintebelge>

### Un p'tit coin de parapluie

Vintage boutique  
Rue des Carmes, 15 // + 32 81 22 55 03  
[www.unpitticoindeparapluie.com](http://www.unpitticoindeparapluie.com)

### Scotch & Soda

Boutique situated in the old Church of Saint-Jacques  
Rue Saint Jacques, 28 // + 32 81 39 33 43

### Ramd'Am

Second-hand shop  
Books, comics, children's books, CDs, vinyl records, DVDs and board games.  
Rue des Carmes, 52 // + 32 81 65 54 34  
[www.boutiqueramd.com](http://www.boutiqueramd.com)

### Les Bijoux de Sophie

Customised jewellery shop and workshop.  
Rue Haute Marcelle, 8 // + 32 484 76 07 30  
[www.lesbijouxdesophie.be](http://www.lesbijouxdesophie.be)

### And many more...

## WELLNESS

### The Royal Snail Hotel & Spa \*\*\*\*

Avenue de la Plante, 23  
+ 32 81 57 00 23  
[www.theroyalsnail.com](http://www.theroyalsnail.com)

### Ne5t Hôtel & SPA \*\*\*\*

Allée de Menton 26  
+32 81 58 88 88  
[www.ne5t.com](http://www.ne5t.com)



# WHAT'S ON IN NAMUR

## EVENTS IN 2018

This year, Namur will once again play host to a plethora of activities... Festivals, traditions, outings in costume, our customs, travel through the ages, styles and seasons.

For more information, go to [www.visitnamur.eu](http://www.visitnamur.eu)

## FEBRUARY

10 - 11/02

### THE NAMUR WINEMAKERS FAIR

Citadel of Namur  
[www.citadelle.namur.be](http://www.citadelle.namur.be)

18/02

### BOUGE TRADITIONAL BONFIRE

Come and burn the winter guy and celebrate the arrival of spring.  
[www.grandfeudebouge.be](http://www.grandfeudebouge.be)

## MARCH

17 - 18/03 & 24 - 25/03

### ROOMS WITH VIEWS ARTISTIC EXHIBITIONS

Painters, photographers, sculptors, engravers, stylists, designers, video makers, graffiti artists, etc. Over two weekends, more than 400 artists will take residence in almost 200 exhibition venues throughout Namur! An opportunity to meet artists in their workshops or in sometimes unusual places!  
[www.facebook.com/chambresavecvue](http://www.facebook.com/chambresavecvue)

23 - 26/03

### WOOD AND HOUSING EXHIBITION

Namur Expo  
[www.bois-habitat.be](http://www.bois-habitat.be)

24/03

### "THE NAMUR BEERS" TORCH-LIT WALK

By booking only  
[www.citadelle.namur.be](http://www.citadelle.namur.be)

## APRIL

02/04

### THE BIG EASTER EGG HUNT

Reine Fabiola Attractions Park  
 Citadel of Namur  
[www.parf.be](http://www.parf.be)



© Marianne Grimon



© P. Lavandy - V. Namur



21/04

### FOLKNAM - THE 22<sup>nd</sup> TRADITIONS AND FOLKLORE FESTIVAL

Craft market, gastronomy and local produce, continuous activities and a grand procession: the local folklore and traditions have pride of place! Blanche de Namur, the 40 Molons, the Alfes, the Brotherhood of Malemort, the Echasseurs, the Brotherhood of Pékèt, etc. No less than 20 folklore groups will be present! Place d'Armes and city centre  
[www.folknam.be](http://www.folknam.be)

MAY

May to September

### CAP FESTIVAL

Another summer by the water's edge! Featuring many events, concerts, etc. On the banks of the Meuse and Sambre rivers  
[www.capefestival.be](http://www.capefestival.be) - see page 17

01/05

### "THE CHILDREN'S CITADEL" FESTIVAL.

A festival of children's songs. Reine Fabiola Attractions Park Citadel of Namur  
[www.parf.be](http://www.parf.be)

11 - 13/05

### NAMUR IN MAY

#### THE FESTIVAL OF FUN FAIR ARTS

During the festival of fun fair arts, the city centre of Namur is transformed as if by magic for the long weekend around Ascension Day! Freak shows, magic roundabouts, wooden horses, flea tamers, giant insects, etc. Namur opens itself up to a fun sort of craziness.  
[www.visitnamur.eu](http://www.visitnamur.eu)

JUNE

01/06 au 10/09

### QUAI NOVÈLE ? BY CAP FESTIVAL

Another summer by the water's edge! Featuring many events, concerts, etc. On the banks of the Meuse and Sambre rivers  
[www.quainovele.be](http://www.quainovele.be) - see page 17

02 - 03/06

### CHURCH OPEN DAYS

[www.eglisesouvertes.be](http://www.eglisesouvertes.be)

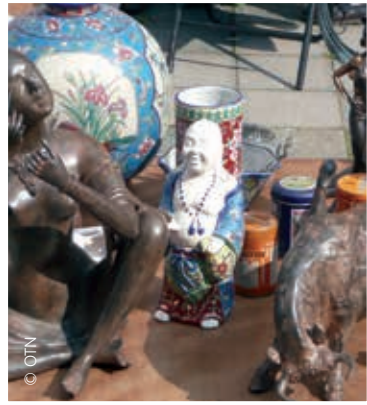
06 - 10/06

### THE PROVENCE VILLAGE

Craftspeople and market gardeners from the south come to Namur, swathing it in the colours of Provence.  
 Place d'Armes  
[www.visitnamur.eu](http://www.visitnamur.eu)



“Djoseph & Francwès” are two folk characters created by the pen of caricaturist Jean Legrand. They humorously embody the easy living held so dear by the people of Namur... Join them at Place d’Armes, brought into being through a work by Suzanne Godard.



**22 - 24/06**

### **WORLD MUSIC DAY**

The festivities start with "Music at every level", a musical route through out of the ordinary venues in the heart of Namur. Concerts and musical activities in the city centre. Free admission.  
[www.fetedelamusique.be](http://www.fetedelamusique.be)

## **JULY**

**29/06 – 30/07**

### **NAMUR FAIR**

Attractions for children and adults alike  
 Parking des Casernes  
[www.visitnamur.eu](http://www.visitnamur.eu)

**07 - 08/07**

### **THE MEDIEVAL FESTIVAL**

With 500 re-enactors and artists, a medieval village, a craft market, shows and processions, this event will plunge you into the heart of the Middle Ages, in an outstanding listed heritage site of Wallonia!  
[www.citadelle.namur.be](http://www.citadelle.namur.be)

**13 - 15/07**

### **NAMUR BEER CAPITAL**

Brewers and local producers invite you to taste their specialities.  
 40 breweries, more than 150 beers.  
 On the Citadel Esplanade  
[www.namurcapitaledelebiere.be](http://www.namurcapitaledelebiere.be)

**20 - 21/07**

### **BELGIAN NATIONAL DAY**

A wide range of family and musical activities, in the city centre and on the banks of the rivers: a firework display, regattas, the grand bric-a-brac market on the quays... in the Grognon district. - [www.visitnamur.eu](http://www.visitnamur.eu)

**28 - 29/07**

### **CANTINE EN VILLE**

A street food event that brings together food-trucks and local producers in a retro-chic and slow food atmosphere.  
 Place d'Armes - [www.visitnamur.eu](http://www.visitnamur.eu)

## **AUGUST**

**10 - 19/08**

### **OPEN AIR THEATRE**

[www.citadelle.namur.be](http://www.citadelle.namur.be)

**12/08**

### **LA PLANTE NAUTICAL JOUSTS**

This folklore tradition sees the inhabitants from districts on the two river banks do battle: Jambes and La Plante. On the banks of the Meuse River - La Plante  
[www.visitnamur.eu](http://www.visitnamur.eu)

**18 - 19/08**

### **TEMPOUX SECONDHAND MARKET**

The largest secondhand market in Belgium, a favourite event for antique hunters and collectors. [www.temploux.be](http://www.temploux.be)

**25 - 26/08**

### THE SOLIDARITY FESTIVAL

Concerts, the Children's City, the Associations' Village. Citadel of Namur Esplanade  
www.lafetedessolidarites.be

**30/08 - 02/09**

### VALÉRIANE FAIR

A fair for organic producers and ecological initiatives - Namur Expo www.natpro.be

## SEPTEMBER

**01/09**

### BEAU VÉLO DE RAVEL

Discover Namur via the RAVEL network of cycle tracks - www.visitnamur.eu

**08 - 09/09**

### HERITAGE DAYS

The 30th edition will be based on the theme "Out of the ordinary heritage"  
www.journeesdupatrimoine.be

**12/09**

### WALLONIA CYCLING GRAND PRIX

Citadel of Namur - www.trworg.be

**14 - 17/09**

### THE WALLONIA FESTIVAL

A programme of music, folklore, folk games, local food and drink, etc.  
City centre - www.fetesdewallonie.be

**28/09 - 05/10**

### FIFF - THE NAMUR INTERNATIONAL FRENCH FILM FESTIVAL

A world renowned festival! More than one hundred films in French will be screened, including preview showings, an international competition and a jury of renowned actors and cinema industry professionals.  
City centre - www.fiff.be

## OCTOBER

**12 to 21/10**

### NAMUR INTERNATIONAL NATURE FESTIVAL

This is the unmissable event for enthusiasts of nature and beautiful images, including an amateur film competition as well as a photo exhibition, conferences, a nature village, walks, etc.  
www.festivalnaturenamur.be

**25 - 29/10**

### BEAUTÉS SONIQUES

This long week-end will be throbb to alternative rhythms and discoveries in out of the ordinary venues!  
www.beautessoniques.be

## NOVEMBER

**01 - 03/11**

### KIKK FESTIVAL - THE NAMUR INTERNATIONAL DIGITAL FESTIVAL, UNIQUE IN EUROPE

An international festival of digital and creative culture, featuring 50 start-ups and welcoming more than 10,000 visitors.  
www.kikk.be

**10 - 18/11**

### ANTICA - THE ANTIQUES FAIR

An international art and antiques fair. A selection from 155 international art galleries and antiques specialists, for discoveries, exchanges and evaluations.  
Namur Expo - www.antica.be

## DECEMBER

**30/11 - 31/12**

### CHRISTMAS MARKET

City centre  
www.noelanamur.be



# SLEEP TO MAKE ROOM FOR DREAMS

Other ambiances reign when night falls... The warmth of the city centre or a night cap after the show by the waterfront, a nice evening stroll in the historic centre...



## HOTELS

**The Royal Snail \*\*\*\***

Av. de la Plante 23, 5000 Namur  
+32 81 57 00 23 | www.theroyalsnail.com  
30 rooms. As of €98

**Ne5t Hôtel & SPA \*\*\*\***

Allée de Menton 26, 5000 Namur  
+32 81 58 88 88 | www.ne5t.com  
6 suites. As of €220

**Château de Namur \*\*\*\***

Av. de l'Ermitage 1, 5000 Namur  
+32 81 72 99 00 | www.chateaudenamur.com  
29 rooms. As of €99

**Les Tanneurs \*\*\*\***

Rue des Tanneries 13, 5000 Namur  
+32 81 24 00 24 | www.tanneurs.com  
36 rooms. 50 to €230

**Villa Gracia \*\*\*\***

Chée de Dinant 1455, 5100 Wépion  
+32 81 41 43 43 | www.villagracia.com  
6 rooms. €123

**Grand Hôtel de Flandre \*\*\***

Place de la Station 14, 5000 Namur  
+32 81 23 18 68 | www.hotelflandre.be  
33 rooms + 4 studios.  
As of €70

**Ibis Namur Centre \*\*\***

Rue du 1er Lanciers 10, 5000 Namur  
+ 32 81 25 75 40 | www.ibis.com/3151  
92 rooms. As of €70

**Beauregard \*\***

Av. Baron de Moreau 1, 5000 Namur  
+32 81 23 00 28 | www.hotelbeauregard.be  
47 rooms. As of €60

## RURAL GITES / ON THE FARM

**Gîte du Curnolo \*\*\*\***

Rue de Curnolo 15, 5020 Malonne  
info@gitecurnolo.com | www.gitecurnolo.com  
+ 32 476 75 02 76  
8 persons. 310 to €450

**Ferme du Haut Daussoulx \*\*\***

Rue de l'Echangeur 36, 5020 Daussoulx  
+32 81 21 18 10 +32 476 59 31 66  
15 persons. 300 to €600

**Gîte du Prieuré \*\*\***

Rue Regnié Durette 11, 5001 Erpent  
yvesetchristine@gite-du-prieure.be  
www.gite-du-prieure.be  
+32 476 66 63 72  
4 persons. €100 Degressive rate

**Maison Pomme \*\*\***

Rue du Château de St Marc 116, 5003 St Marc  
esonck@skynet.be  
www.maisonpommenamur.be  
+32 477 84 30 80  
4 persons. 170 to €340

**Le Souimanga \*\*\***

Rue Ernest Moëns 75, 5024 Gelbressée  
+ 32 479 71 14 86  
michel.kowalski5024@gmail.com  
4 persons. 140 to €300

**Le Manoir d'Atys \*\*\***

Rue du Mologna 5, 5101 Erpent  
+ 32 475 39 72 47  
edouard.destreel@freebel.net  
8 persons. 250 to €550

**La Sapinière \*\*\***

Rue de la Sapinière 1, 5100 Naninne  
magdaetandre@hotmail.be  
+32 496 30 90 16  
14 persons. 510 to €770



© Briteuc G.

### La Grange d'Alfred

Rue de la Sapinière 1A, 5100 Naninne  
 magdaetandre@hotmail.be  
 +32 496 30 90 16  
 13 persons. 510 to €770

### Les Cardamines

Comognes de Temploux, 16  
 5020 Temploux  
 + 32 475 27 08 30  
 lescardamines@hotmail.com  
 4 persons. 160 to €290

## URBAN GITES



### Villa Léanne

Rue Léanne 82, 5000 Namur  
 +32 495 84 40 53  
 villa@leanne.be | www.leanne.be  
 2 persons. As of €85

### Les Gîtes du Vieux Namur

Rue du Président 32, 5000 Namur  
 info@lesgitesduvieuxnamur.be  
 www.lesgitesduvieuxnamur.be  
 +32 475 45 76 00  
 4 gîtes : 2 persons.  
 Degressive rate : 85 to €45

### Maison Rops

Rue du Président 49, 5000 Namur  
 info@lesgitesduvieuxnamur.be  
 +32 475 45 76 00  
 6 persons. 55 to €130

### Namur - Energite

Avenue Albert 1<sup>er</sup> 95C, 5000 Namur  
 namurenergite@sudepervier.be  
 www.namur-energite.be  
 + 32 496 54 40 67  
 3 persons. 60 to €95

### La Clé des Songes

Rue Jean Gilson 22, 5100 Jambes  
 julienjenicot96@gmail.com  
 www.lacledessonges.be  
 + 32 472 75 19 51  
 4 persons. 180 to €380

### Au Sainte Barbe

Rue Montagne Sainte Barbe 114  
 5100 Namur  
 julienjenicot96@gmail.com  
 + 32 472 751 951  
 4 persons. 180 to €380

## BED AND BREAKFAST



### CitaBel'Air

Avenue Bel Air 6, 5000 Namur  
+ 32 473 59 38 41  
geelhand.belair@skynet.be | www.citabelair.com  
1 room. €125

### Villa Balat

Quai de Meuse, 39  
5100 Jambes  
+ 32 473 30 55 00  
info@villabalat.be | www.villabalat.be  
3 rooms. 115 to €160

### Clos du Berger

Bois Saint-Antoine 3a, 5100 Wépion  
philippe.bihain@gmail.com | www.clos-du-berger.be  
+32 479 77 28 48  
1 room. 60 to €75

### Le Manoir Ivoire

Chée de Dinant 642, 5100 Wepion  
info@manoir-ivoire.com | www.manoir-ivoire.com  
+32 477 52 75 60  
4 rooms. 115 to €160

### Clos de l'Ecluse

Boulevard de Meuse 138, 5100 Jambes  
bb5100@outlook.com  
+ 32 81 30 61 12  
1 room. €85

### La Noiseraie

Domaine du Bois de Néverlée 3, 5020 Temploux  
info@lanoiseraie.be | www.lanoiseraie.be  
+32 81 25 32 25  
4 rooms. 109 to €149

### Entre Ciel et Rivage

Rue de l'Ecole 79, 5100 Dave  
contact@entrecielevrivage.net | www.entrecielevrivage.be  
+32 81 40 22 12  
2 rooms. €90

### Le Petit Atelier du 44b

Avenue Baron Fallon, 44b, 5000 Namur  
+32 496 08 98 19  
www.lepetitatelierdu44b.com  
creanamur@hotmail.com  
1 room. €80

### Côté Fontaine

Rue de la Fontaine 43, 5022 Cognelée  
+32 81 20 04 75 + 32 478 63 93 88  
info@cotefontaine.be | www.cotefontaine.be  
2 rooms. 57 to €67

### Le Clinchamp

Rue du Clinchamp 65, 5020 Malonne  
+ 32 81 44 50 36 + 32 476 41 57 63  
micheduvivier@gmail.com | www.leclinchamp.be  
2 rooms. 50 to €65



### Ferme de Reumont

Chemin de Reumont 97, 5020 Malonne  
+32 81 44 18 52  
fermereumont@skynet.be | www.chambre-dhote.be  
4 rooms. 55 to €68

### Le Beau Vallon

Chemin du Beau Vallon 38, 5100 Wépion  
+32 81 41 15 91  
bed@deribaucourt.be | www.lebeauvallonwepion.be  
4 rooms. 50 to €70

### Accueil Champêtre

Rue des Aubépines 28, 5101 Erpent  
+32 81 31 06 40  
1 room. 60 to €90

### Les Dépendances

Haut de Bomel 14, 5003 Saint Marc  
+32 497 41 05 61  
info@lesdependances.be | www.lesdependances.be  
4 rooms. 45 to €85

## BARGES

**MS Elisabeth**

Quai des Chasseurs Ardennais  
croisieres@mselisabeth.com  
www.mselisabeth.com  
+32 477 56 05 48  
4 cabins. 95 to €135

**L'Ange-Gabriel**

Quai des Chasseurs Ardennais  
info@ange-gabriel.be  
www.ange-gabriel.be  
+32 487 88 56 87  
4 cabins. €69

**La Valse Lente**

Quai des Chasseurs Ardennais  
lavalselente@gmail.com  
www.lavalselente.be  
+32 479 56 91 16  
4 cabins. 75 to €95

## CAMPING SITE

**Les Trieux \*\***

Les Tris 99, 5020 Malonne  
camping.les.trieux@skynet.be  
www.campingletrieux.be  
+32 81 44 55 83  
103 persons. As of €13

## YOUTH HOSTEL

**Aubeerge de Jeunesse Félicien Rops**

Av. Félicien Rops 8, 5000 Namur  
namur@lesaubergesdejeunesse.be  
www.lesaubergesdejeunesse.be  
+32 81 22 36 88  
103 persons. As of €19

## FURNISHED TOURIST ACCOMMODATION

**Vacances Citadelle**  

Rue Kefer 5 Apt42, 5100 Jambes  
alain4311@gmail.com  
www.vacancescitadelle.wordpress.com  
+32 475 70 02 23  
2 persons. 80 to €440

**Bois Willame**  

Allée de la Closerie 73, 5101 Erpent  
leboiswillame@outlook.be  
+ 32 486 20 18 10  
6 persons. 220 to €385

## SERVICE AREA FOR MOTOR HOMES

Parking facility with 8 places and  
service terminal (drinking water  
supply, emptying of household water  
and WC cassettes).  
Price: €7.50 per use of the terminal.  
Free parking.  
GPS coordinates:  
50° 28.066', 4° 51.004'  
Follow the indications for "Namur  
Expo"



Establishments labelled "Bicycles welcome"



Located in a small lane, a stone's throw from Namur Theatre and the confluence of the Sambre and Meuse rivers, this magnificent cluster of eleven 17th-century houses is now home to a four-star Hotel and gastronomic restaurant, "L'Espièglerie & le Grill".

With its blue stone frontage, remains of ancient tanneries, brick vaults and stone arches, the site is truly enchanting.

Private car park adjacent to town centre, railway station at 800 metres, Casino at 1.5 km.



hôtel\*\*\*\*

espièglerie

grill

Les Tanneurs de Namur Rue des Tanneries 13b 5000 Namur

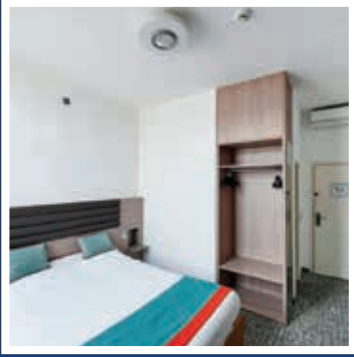
Tel. : +32(0)81/240024 Fax : +32(0)81/240025

www.tanneurs.com info@tanneurs.com



Best  
Western.

# Grand Hotel De Flandre\*\*\*



- 3 star hotel
- Located in the city centre opposite the Railway Station of Namur
- Situated in a landmark building of more than 100 years old
- 33 large and renovated bedrooms

- Air conditioning
- Soundproof windows
- Coffee and tea making facilities
- Free Wi-Fi
- Flatscreen TV
- En-suite bathroom



- Bar
- 24 hour reception service
- Dry cleaning services
- Varied buffet breakfast
- Car and bicycle hire








For more information or to make a reservation, contact us on:  
+32 (0)81 23 18 68 - [info@hotelflandre.be](mailto:info@hotelflandre.be)

Place De La Station, 14 - 5000 Namur  
[www.hotelflandre.be](http://www.hotelflandre.be)



## Ibis Namur Centre



-  Only 500 m. away from the city centre
-  92 comfortable rooms
  - Sweet Bed by ibis
  - Air conditioning
  - Shower and private toilet
  - Satellite TV
-  Rooms for 1, 2 or 3 persons
-  24 / 7 welcome, bar and snacks
-  Multilingual and smiling staff at your service
-  Free Wi-Fi throughout the hotel
-  Free Internet corner
-  Paying private car parking, free bicycle parking
-  Pets allowed



*WELL-BEING AT THE BEST PRICE*



### CosyNE5T

4 Suites & 2 Duplex

De l'authenticité au High tech  
Hotel Privatisable entre 12 et 18 personnes  
Literie HASTENS



### WellNE5T

Piscine intérieure & Hammam  
Massages et soins visage

\*7/7 également possible pour les non-résidents



### LinkNE5T

Salles de séminaire & projection  
Restaurant pour des groupes entre 8 et 16  
personnes  
Rencontres professionnelles





La Maison des Desserts  
Chocolaterie de Hucorne - Fronville



THE MAISON DES DESSERTS [DESSERT HOUSE] HAS A PROUD HISTORY OF THREE GENERATIONS IN THE HUCORNE FAMILY.

The Fronville chocolate factory was created in 1946 by Mrs Fronville, the aunt of Mr Etienne de Hucorne. The latter, a confectioner and chocolate maker, took over the chocolate factory with his wife when his aunt discontinued operations in 1974. In 1993, he opened a tea room in the Saint-Loup quarter of old Namur.

Today, Claire and Etienne de Hucorne and their two sons run two unmissable establishments on the Namur landscape with an expert hand: the Fronville chocolate factory, situated on the Rue de Fer provides different varieties of chocolate, but also Biêtrumé, Namuco and Fély, whereas the Maison des Desserts, situated on the Rue Haute Marcelle, serves a choice of pastries, chocolates, macaroons as well as trendy snacks in the exceptional setting of a 17th century building.

La Maison des desserts  
Rue Haute Marcelle 17 - 5000 Namur - 081 22 74 51  
[www.maison-des-desserts.be](http://www.maison-des-desserts.be)



## THE IMPERIAL-BISTER VISIT THE MUSTARDFACTORY

Our family business, founded in 1926, exist since 3 generations. We manufacture and distribute different kinds of mustards, the piccalilli, the onions, gherkins and capers in vinegar and cold sauces.



**GROUP VISITS:** Guided tours all year round subject to prior booking (min 15 people). Possibility of meal based on our products (min 25 people by prior order).

**VISITS FOR INDIVIDUALS:** From mid-June to end September. Ticket office opens daily from 9.30am except on Friday. Guided tours at 10 am and 2 pm. Possibility to purchase our products on site.

**SPECIAL FOR SCHOOLS:** «the workshop of the mustard»: make your own mustard and bring it home with you! We are waiting for you! (Supplement 1 € / person)

Moutarderie Bister  
Rue du Parc Industriel, 10  
B-5590 ACHENE // +32(0)496.43.77.38  
[www.bister.com](http://www.bister.com)

Guided tours management:

*Tourisme  
& Tradition*

More information:  
[info@tourisme-et-tradition.be](mailto:info@tourisme-et-tradition.be)  
[www.tourisme-et-tradition.be](http://www.tourisme-et-tradition.be)



**BOARDING AT THE FOOT  
OF THE CITADEL  
QUAI DES CHASSEURS  
ARDENNAIS**



✦ **NAMUR - SAMBRE & MEUSE (50 MIN.), ROUNDTrip - NO CRUISES ON WEDNESDAYS**

Departure : from 01/04 to 30/06 and from 01/09 to 30/09 at 1:30, 3:00, 4:00 PM.  
from 01/07 to 31/08 and 11:00, 1:30 and 5:00 PM.

Price: Adults: € 8 - children: € 6.50 - group (+20 p.) : € 7 - Schools: 5.50 €

✦ **NAMUR - WÉPION (1H45), ROUNDTrip - NO CRUISES ON WEDNESDAYS**

Departure: 03:00 PM from 01/07 to 31/08.

Price: Adults: € 14 - children: € 11 - group (+20 pers.): € 12.50 - Schools: € 10



# STREETS OF NAMUR

Abbaye (quai de l') A1  
Aden et roi (sentier) C2  
Albert Ier (avenue) B6  
Amoureux (sentier des) C2  
Ange (rue de l') B4-C4  
Ange (place de l') B4  
Ardennes (pont des) C5  
Armée Grouchy (rue de l') A2  
Armes (place d') B4-C4  
Arsenal (rue de l') B3  
Astrid (parc reine) D5-E5  
Astrid (avenue reine) B2-C2  
Asti Moulin (rue) A3  
Bailly (rue du) C4  
Baivy (rue) D5  
Bas de la place (rue) C4  
Bas-prés (rue des) B1  
Basse Marcelle (rue) B3  
Basse Neuville (rue) B5  
Bastin (rue Adolphe) A3  
Bavière (rue de) B4  
Bayar (rue Denis-Georges) A3  
Beffroi (rue du) B4  
Bel Horizon (rue) A5  
Belvédère (rue du) C1  
Berenger (chemin) D2  
Biches (tienne des) D3  
Billiard (rue Julie) B4  
Blanche de Namur (av.) E2  
Blès (rue Henri) B1  
Bleuets (rue des) C5  
Blondeau (rue) B2-B3  
Boileau (chemin) D2  
Bord de l'eau (rue) C3-C4  
Bordial (porte de) C3  
Borgnet (rue) A4  
Bosret (rue) B2-C2  
Bouchers (rue) C4  
Boufflers (sentier de) C2  
Bourgeois (rue des) B5  
Bovesse (av. gouverneur) C5-D5  
Brabant (rue Jean-Baptiste) B5  
Brasseurs (rue des) C3-C4  
Brigades d'Irlande (rue des) D5  
Brunell (boulevard Isabelle) C5  
Bruno (rue) B2-B3  
Bruxelles (rue de) B3  
Burniaux (rue) C5  
Calozet (rue J.) A2  
Cambier (rue Père) A2-B2  
Canons (route des) C3  
Capucins (venelle des) B4  
Carmes (rue des) B3  
Carrières (rue des) A5  
Catherine de Savoie (rue) C3  
Cauchy (boulevard) A5-B5  
Champêtre (rue) C5  
Chapitre (place du) B3  
Collège (rue du) B3  
Colline (rue de la) C1  
Colson (rue J.) C1  
Combattants (avenue des) A2  
Confiserie (rue de la) D5  
Coppin (rue de) D4-E4  
Coquelet (rue de) A5  
Coquelicots (rue des) C5  
Cotelis Jambois (rue des) D5  
Courtenay (rue) B5  
Courtroy (quai Ferdinand) C3-C4  
Couvent (rue de) D4  
Cousiers (rue des) B3-B4  
Croix (rue de la) B3-B4  
Croix du Feu (avenue des) A2  
Croix Rouge (rue de la) C5  
Cuvelier (rue Emile) B4  
Dame (avenue de la) E5  
Dames Blanches (rue des) B4  
Daubancourt (rue Larcher) A4-A5  
Dave (rue de) D4-E4  
Del Marmol (rue A.) D1  
Delvaux (rue) A4  
de Moreau (av. baron) D3  
Descamp (place chanoine) C3-C4  
de Smet de Neyer (av.) B5  
de Stassart (avenue) B2  
Dewez (rue) A4  
Dodane (rue de la) A2  
Dufer (rue F.) B1  
Echasseurs (rue des) C4  
Ecluse (quai de l') A2  
Ecole des Cadets (pl. de l') B5  
Enfer (ruelle de l') A2  
Enhaive (rue d') D5  
Ernotte (rue) A2  
Etoile (rue de l') B4  
Evêché (pont de l') C3  
Falmagne (place G.) B2  
Fer (rue de) B4  
Florence (rue Balthazar) B1  
Folliette (Chemin de la) C2  
Font des Bas-prés (rue) A1-B1  
Ford d'Orange (chemin du) D2  
Fossés Fleuris (rue des) C3-C4  
France (pont de) C4  
Frère Orban (boulevard) B3-C3  
Fripiers (rue des) C4  
Fumal (rue) B3-C3  
Gaillot (rue) A4  
Gare (avenue de la) A3-A4  
Gembloux (rue de) A2  
Godefroid (rue) B3  
Godin (place Louise) C1  
Golenvaux (avenue) C4  
Grafé (rue Joseph) B3  
Grangagnage (rue) D3  
Gravière (rue de) B4  
Grognon (rue du) C4  
Halle (rue de la) C4  
Hambursin (rue Eugène) B2  
Harscamp (galerie d') B4  
Harscamp (rue d') C4  
Harscamp (hospice d') C4  
Hastedon (place d') A2  
Haute Marcelle (rue) B3-B4  
Herbatte (boulevard d') A4-A5  
Heuvy (pont d') A2  
Huart (bou. baron L.) C4  
Huit mai (place du) C1  
Inquiétude (rue de l') A3-A4  
Jambes (pont de) D4  
Jean 1er (avenue) C2-C3  
Joghiers (quai des) C3  
Josephine-Charlotte (place) C5  
Kefer (rue) C5  
Kegeljan (place) C4  
Léanne (impasse) A5  
Léanne (rue) A4  
Lelièvre (rue) B3  
Lemaître (rue Henri) B2  
Léopold (place) A4  
Léopold (square) A4  
Léopold II (avenue) B2  
Libération (pont de la) B2  
L'Ilon (place) B4  
Lombard (rue du) B4  
Louvain (chaussée de) A4  
Louvain (rue du Pont de) A4  
Maquet (rue A.) A3  
Marché aux Légumes (place) B4  
Marcholette (rue de) C4  
Marie d'Artois (avenue) D2  
Marie-Henriette (rue) A3  
Marlagne (avenue de la) C1  
Masuis Jambois (rue des) D5  
Maternelle (av. bourgm. Jean) D4-D5  
Maus (place) A4  
Mazy (rue) D4-C5  
Mélèzes (chemin des) C1-D1  
Mélot (boulevard Ernest) A3  
Menton (allée de) D1-E1  
Mercier (avenue cardinal) B2  
Merckem (boulevard de) A2-A3  
Merveilleuse (route) D2-D3  
Meuse (boulevard de la) E3-D4  
Meuse (quai de) D4-C5  
Michel (rue général) B4-A5  
Milieu du Monde (pl.) E1-D2  
Moncreabeau (rue) A4-B4  
Monnaie (rue de la) C4  
Mottiaux (rue) D4  
Namèche (rue Lucien) A4-B4  
Nord (boulevard du) A3  
Notre-Dame (rue) C4  
Omalius (place d') A3  
Ouvrage (rue de l') B3  
Palais de Justice (place du) B3  
Patenier (rue) B1  
Pépin (rue) B4  
Pépinère (rue de la) A3  
Pied du Château (pl.) C4  
Piret-Pauchet (rue) A4  
Plage (rue de la) D4  
Pont (rue du) C4  
Pont des Ardennes (rue du) C5  
Ponty (rue) B5  
Premier Lanciers (rue du) B4  
Président (rue du) B3-C3  
Prévoyance (rue de la) B1  
Prince de Liège (avenue) C5  
Prinz (rue Renée) D4  
Progrès (rue du) B1  
Quai de Meuse D4-C5  
Quatre fils Aymon (rue des) B5  
Quatre Maisons (rue des) C1  
Quatrième Génie (rue du) B5  
Racine (chemin) D2  
Rampe Verte C3  
Ravaissin (rue Félix) A4-A5  
Rogier (rue) A4-B4  
Romagnesi (chemin) D2-D3  
Ronvaux (rue Edmond) B5  
Roses (rue des) C5  
Rupplémont (rue) C3  
Ryckmans (place A.) B2  
Saint-Aubain (place) B3  
Saint-Calixte (rue) D4  
Saint-Fiacre (rue) A5  
Saint-Hilaire (place) C4  
Saint-Jacques (rue) B3-B4  
Saint-Jean (rue) C3-C4  
Saint-Joseph (passage) B4  
Saint-Joseph (rue) B3  
Saint-Loup (rue) B3  
Saint-Martin (rue) D3-E3  
Saint-Nicolas (rue) B4-B5  
Saintonge (chemin J.A.) D3  
Saintraint (rue Joseph) B3-C3  
Saint-Simon (sentier) C3-D3  
Salzannes-les-Moulins (rue) A1-A2  
Séminaire (rue du) B3-C3  
Servals (place Maurice) C4  
Simonis (rue) C1  
Stade (allée du) D5  
Station (place de la) A3  
Tabora (avenue de) A1-B2  
Tan (rue du) B5  
Tannerie (rue des) B4-B5  
Temple (rue du) A4  
Théâtre (place du) B4  
Thonard (rond-point M.) D2  
Tillieux (rue) D4  
Tour (rue de la) B4-C4  
Ursulines (impasse des) A3  
Van Opère (rue) D4-C5  
Vauban (avenue) D1-D2  
Verriers (rue des) A5  
Verte (rue) D4-D5  
Vierge (rempart de la) B2-B3  
Violettes (rue des) C5  
Vrithoff (avenue sergent) B1  
Wallonie (place de la) D5  
Waterloo (chaussée de) A1-A2  
Wérotte (rue Charles) C1-B2  
Wiertz (place) B1  
Wodon (rue Félix) A2  
Zoude (rue Charles) B1-C1

E42 - Mons Charleroi Paris / Liège  
N4 - Gembloux

A

B

C

D

E

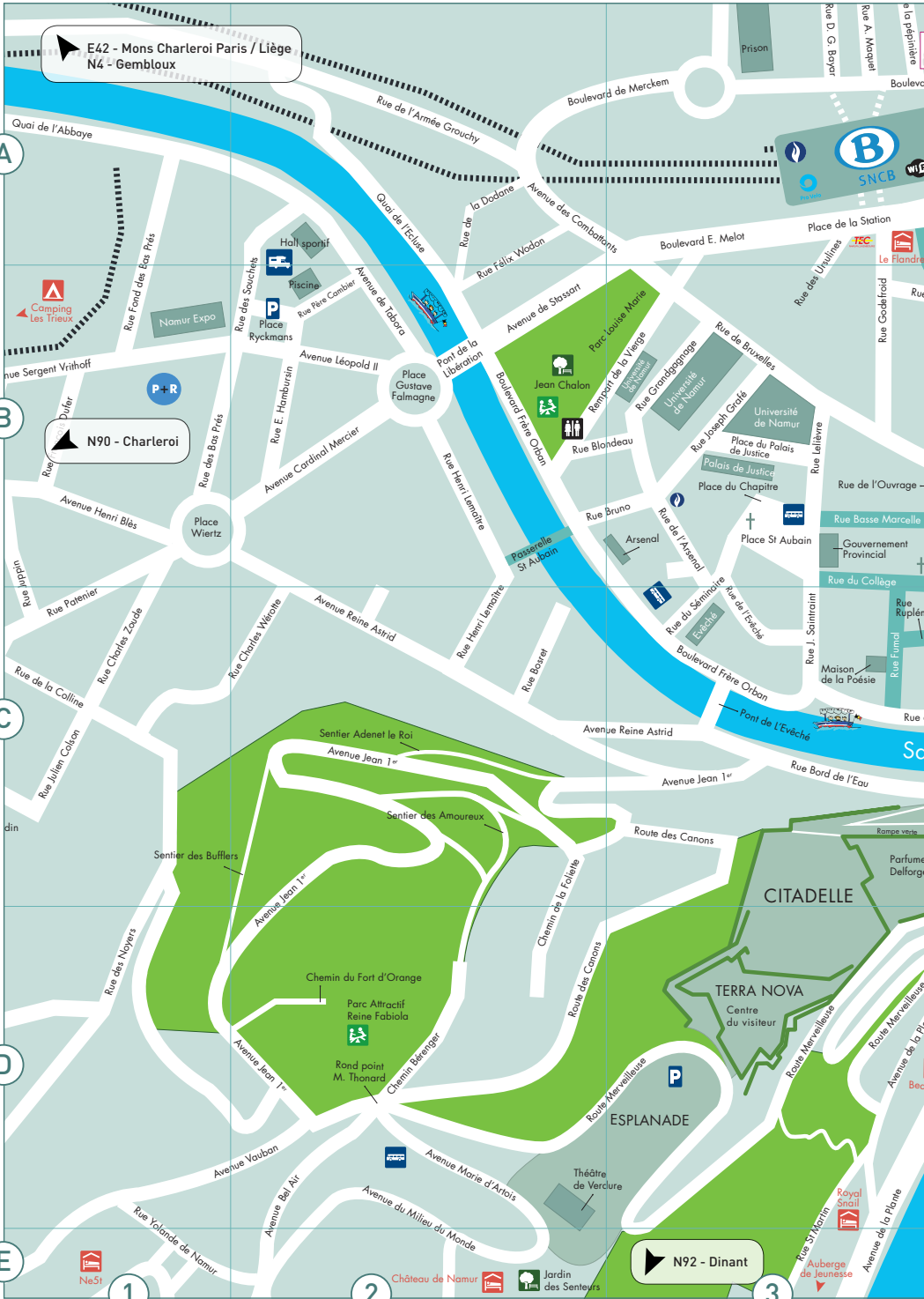
N90 - Charleroi

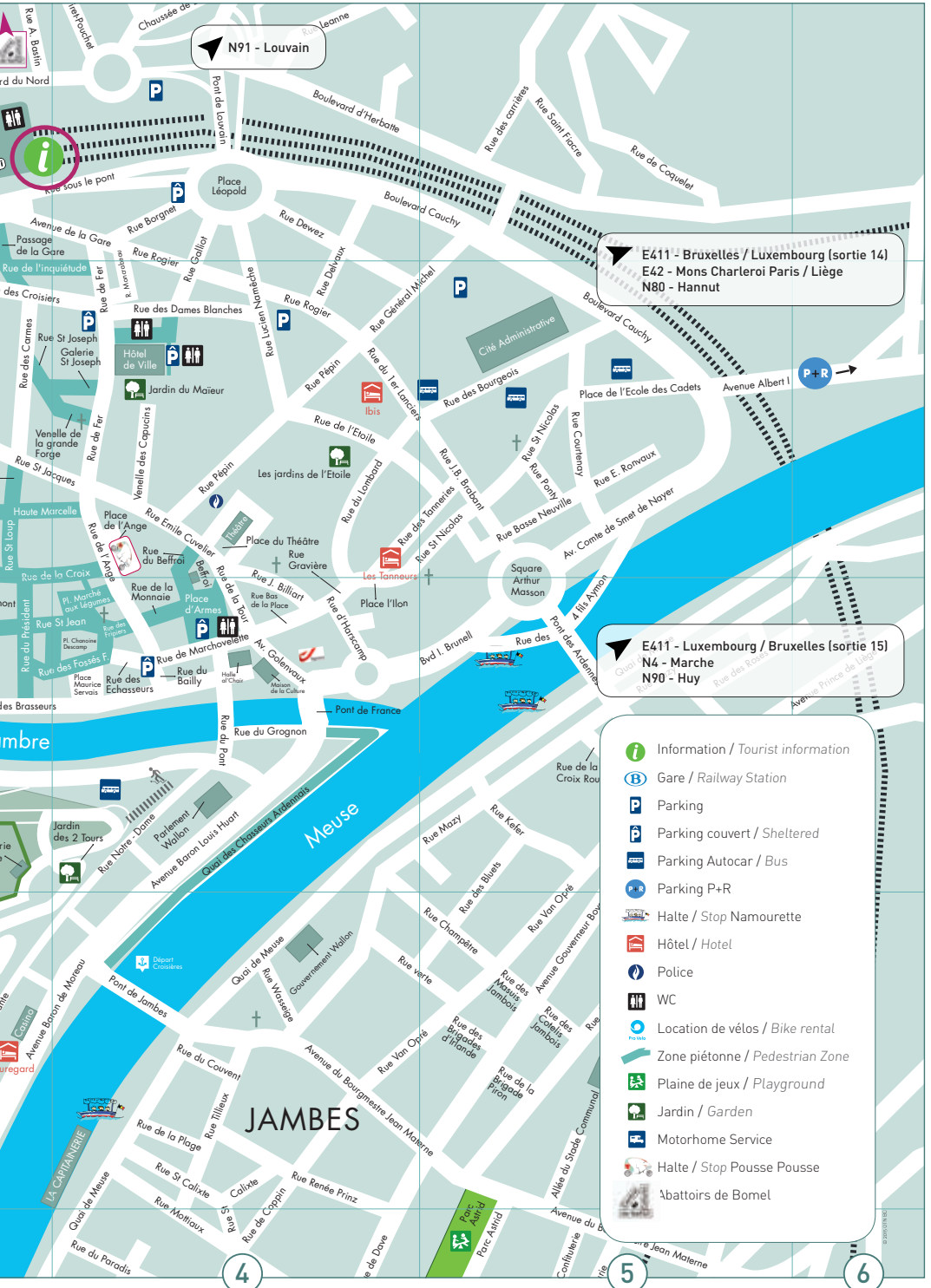
N92 - Dinant

1

2

3







## ACCESS

### BY PLANE

- Brussels South Charleroi Airport  
[www.charleroi-airport.com](http://www.charleroi-airport.com)
- Liège Airport  
[www.liegeairport.com](http://www.liegeairport.com)
- Brussels Airport  
[www.brusselsairport.be](http://www.brusselsairport.be)

### NAMUR TRAIN STATION

Place de la Station  
Tel. : +32 2 528 28 28 - [www.b-rail.be](http://www.b-rail.be)

### ESPACE TEC (PUBLIC TRANSPORT)

Place de la Station - 5000 Namur  
Tel. : +32 81 25 35 55 - [www.infotec.be](http://www.infotec.be)

### BY CAR

Motorways E41 (Arlon-Brussels) and E42 (Liège-Mons), National Roads N4 (Arlon-Namur), N90 (Liège-Charleroi) and N92 (Namur-Dinant).

### SMART PARKING

- Park and Ride (P+R) facilities are ideal!
- P+R Saint-Nicolas (276 pl.) – Avenue Albert 1er.
- P+R Namur Expo (475 pl.) – Avenue Sergent Vrithoff.
- The “Casernes” parking facility (670 places) is accessible to the public from Friday evening (6:00 o'clock) to Sunday.
- On Saturday, 4 parkings (350 pl.) : University of Namur : BUMP, Droit inférieur, Bon Pasteur, Arsenal.

[www.namur.be](http://www.namur.be)

*The Tourist Office is not responsible for price changes or other information relating to the attractions and events mentioned in this brochure.*

## USEFUL INFORMATION

### EMERGENCY SERVICES

**Emergency medical services** : 100 or 112

**Police** : 101 - Place du Théâtre  
5000 Namur

**Fire Brigade** : 100

### TAXIS

**Hepp Taxis** : Rue de Gembloux, 500  
5002 St Servais - Tel. : +32 81 31 36 15

### Taxis Namur :

Rue de l'Abbaye, 2 - 5000 Namur  
Tel. : +32 81 84 93 56

### PUBLIC TOILETS (FREE)

**Town Hall** : Rue de Fer - 5000 Namur  
(Monday to Saturday morning)  
[www.namur.be](http://www.namur.be)

### LI BIA VELO

250 bicycles under a sharing system in  
25 stations throughout Namur  
[www.libiavelo.be](http://www.libiavelo.be)

### BLUE BIKE

Bike at your disposal at the Namur train  
station.  
[www.blue-bike.be](http://www.blue-bike.be)

### PRO VELO NAMUR

Bicycle rental and repair services  
Place de la Station, 1 - 5000 Namur  
Tel. : +32 81 81 38 48  
[www.provelo.org](http://www.provelo.org)

### ELECTRIC BICYCLES

Available for rental at the Tourist Infor-  
mation Centre  
Place de la Station - 5000 Namur  
Tel. : +32 81 24 64 49  
[www.visitnamur.eu](http://www.visitnamur.eu)



Castle of the Counts  
60 Route Merveilleuse  
**Namur Citadel**

# Guy Delforge Parfums

This centre of creativity, unique in northern Europe, provides all visitors with an understanding of the different steps involved in producing a fine perfume. These perfumes are carefully crafted and matured deep in the cellars of the Citadel, silent witnesses from the days of Charles the Fifth ! This «Light, sound and perfume» show is such that the outside world is rapidly forgotten.

## **Exhibition-Sales : free access all year,**

Monday to Saturday, 10 am till 5.30 pm (6 pm, April till October). Sundays and public holidays, 2 pm till 6 pm

## **Tour of the Perfumery workshop**

**Individual** : guided tour (duration 1 hour) or with audioguide, Saturdays at 3.30 pm, except public holidays, 3,50 €. -12 y. 3 €, FR, NL, EN, DE, ES, IT.

During school holidays, Monday to Saturday except public holidays, 3.30 pm, other possible tour with audioguide, see timetable of the day

**Groups** : min 15 persons, all year, from Monday to Saturday, by appointment, guide or audioguide 3 €. -12y. 2,5 €: French, Dutch, English, German, Spanish, Italian film 12 min. and composition room 2 €: Russian, Polish, Chinese, Japanese, Arabic, Portuguese

**www.delforge.com Phone: 0032 (0)81 22 12 19 info@delforge.com**



video



delforge.com

in 12 languages