



VISIT



NAMUR

GROUPS
EN 2024

OFFICE DU TOURISME



NAMUR
CAPITALE

www.visitnamur.eu



WELCOME



Nestling at the confluence of the Sambre and the Meuse rivers, the Capital of Wallonia invites you to come and explore, stroll around, relax or enjoy an adventure! You are sure to be captivated by its generosity, its gastronomy and its rich heritage.

Storm the Citadel by cable car or go aboard a boat for an enjoyable cruise between the Sambre and the Meuse. Follow the guide... Our visits, from the most conventional to the most unusual, will take you to discover all the secrets of the city and the surrounding area, its heritage, its culture, its folklore and its savoir-faire. Numerous original activities are also arranged for you in line with the seasons: escape games, city games, workshops and more.

Not forgetting the pleasures of the table... Our gastronomic partners will have something to make your mouth water. Sit down and savour the local products without further ado. Sweet, savoury, fruit juice, wines and beers, as well as the traditional pécket (local gin made from corn) - there is something to suit every taste!

Would you like to organise a day for your association or your group? Are you looking for an original team-building event? Are you planning to offer your students a day of activities, each one more fun and exciting than the other? In Namur, everything is possible!

Throughout the year, the professional, multilingual team at the Tourist Office is ready to listen to you and offer you a personalised, free service.

Whatever your budget, your centres of interest, the age of the group members and the type of formula required (package deal or à la carte), you will find just what you are looking for! In this brochure, we offer you the best of Namur to be experienced as a group. From the most conventional to the most unusual, the sky's the limit!

Contact us and together we will put together your programme and organise your day in Namur.

Among other things, we can reserve the following for you:

- Guided tours in English, French, Dutch or German.
- Museums, tourist activities and attractions.
- Meals at a reputed Namur restaurant.
- Coach hire to take you round our beautiful region, etc.

Come along to explore and experience Namur now!

Anne Barzin, Councillor for tourist development
Anne-Marie Cisternino-Salembier, President

Responsible publisher:
Namur Tourist Office - Anne-Marie Cisternino-Salembier
Edition 2024

P. 4

EXPLORING

A day in Namur – Package deals
The great classics (à la carte)

P. 16

TASTING

P. 20

RELAXING

Along the water
Off you go!
Nature

P. 26

ACCOMMODATION



Accessible to people with reduced mobility



Accessible to the deaf and hearing-impaired



Accessible to those with a visual impairment



Favourite



Unusual

INFORMATION AND RESERVATIONS

NAMUR TOURIST OFFICE

GROUPS SERVICE

Hôtel de Ville - 5000 Namur

+32 81 24 60 06

groupes@visitnamur.eu

www.visitnamur.eu

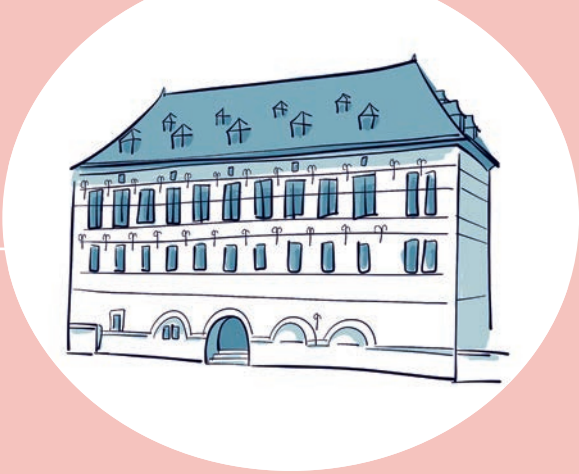


visit_namur



visitnamur

You can also arrange to meet one of our staff in order to organise your day in Namur. By appointment only. Please call +32 81 24 60 06 or contact groupes@visitnamur.eu.



The Tourist Information Office, which since July 2023 is situated in the fully renovated **"Halle al'Chair"**, a listed historical building dating back to the 16th century, is open 7 days a week.

Start your day in this magnificent setting, where tradition and modernity blend harmoniously.

We receive groups (of up to 50 people) in a specially equipped room. As an option, you can book a welcoming coffee or breakfast, which will be served buffet-style in these magnificent, vaulted premises on the banks of the Sambre River.

Furthermore, in our shop, you will find a selection of local produce so that any members of your group who so wish can take a little bit of Namur home with them.



© Amélie Ledoupe



© M. Voglet/OTN

OFFICE DU TOURISME DE NAMUR

Halle al'Chair - Rue du Pont 21

Tel. : +32 81 24 60 06

www.visitnamur.eu • groupes@visitnamur.eu

Book your ticket
in advance via our
groups service
groupes@visitnamur.eu

€ 12 / day / car

 Interparking



Exploring

A city of history, culture and tradition, Namur has succeeded in retaining the traces of its rich past. Standing at the confluence of the Sambre and the Meuse rivers, the majestic Citadel overlooks the city. Together, they have passed through many ages...



Package deals

A day in Namur



➡ OLD NAMUR AND ITS CITADEL FROM € 39/PERS.

Morning

Guided tour of the old districts: charming walk through the pedestrian area, exploring the picturesque little streets of old Namur and their **outstanding architectural heritage**, dating mainly from the 18th century.

Several possible themes: see pages 8, 9.

Lunch

Three-course meal at the restaurant 'Le Grill des Tanneurs'.

Afternoon

Guided tour outside the Citadel. Spend time outdoors exploring one of **Europe's largest fortresses** that bears privileged witness to two thousand years of history.

- Rate applicable as of 12 people.
- Valid all year round.
- Supplement: the Citadel cable car.



➡ AROUND NAMUR SAVOIR-FAIRE GUY DELFORGE PERFUMERY, NAMUR CRAFT BREWERY: FROM € 42/PERS.

Morning

Guided tour of the workshop at the Guy Delforge Perfumery. Nestling in 16th-century galleries at the Citadel, this workshop, unique in Northern Europe, unveils all its secrets and reveals the phases in the manufacture of a perfume.

Lunch

Three-course meal at the restaurant 'Le Grill des Tanneurs'.

Afternoon

Guided tour of the 'Brasserie de la Houppé'. Discover the brewing room established in an important place in the history of Namur. Free tasting.

- Rate applicable as of 20 people.
- Except on Sundays and public holidays.





Located in a small lane, a stone's throw from Namur Theatre and the confluence of the Sambre and Meuse rivers, this magnificent cluster of eleven 17th-century houses is now home to a four-star Hotel and gastronomic restaurant, "L'Espèglèrie & le Grill".

With its blue stone frontage, remains of ancient tanneries, brick vaults and stone arches, the site is truly enchanting.

Private car park adjacent to town centre, railway station at 800 metres, Casino at 1.5 km.



hôtel****

espièglèrie

grill

Les Tanneurs de Namur Rue des Tanneries 13b 5000 Namur

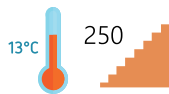
Tel. : +32(0)81/240024 Fax : +32(0)81/240025

www.tanneurs.com info@tanneurs.com

À la carte

The great classics

Namur Citadel



* THE UNDERGROUND PASSAGES (1.30 H)

Scenographic guided tour!

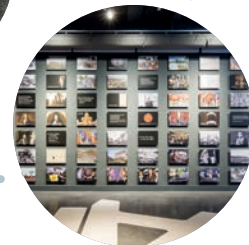
Dare to enter the heart of 'Europe's termite mound'! Come and explore **the largest underground passages in a Citadel.**

- € 10 per person – minimum 15 people.
- Maximum 30 people at once.
- Monolingual visit of choice: FR/NL/GB.

* VISITORS' CENTRE (1 H)

Installed in the old Terra-Nova barracks, **this centre presents the joint history of Namur and its Citadel.** It is equipped with state-of-the-art tools, plans and maps, canons, works and numerous other concrete testimonies. Thanks to a dynamic and educational stage setting, 2,000 years of European urban and military history are commented and illustrated here, reflecting on the societies of yesterday, today and tomorrow.

- Unaccompanied admission: € 5 per person – minimum 15 people. (There are 48 audio-guides available in French, Dutch, English, German, Spanish, Italian and Chinese).
- Guided tour: € 9 per person – minimum 15 people.



* VISIT THE ESTATE BY TOURIST TRAIN (25')

Enjoy a trip with a commentary and admire the superb panoramic view across **Namur and the Meuse valley.**

- € 5 per person – minimum 15 people - maximum 40 people.

* THE MEDIAEVAL TOUR (1.15 H)

Walk around **the mediaeval level** of the site followed by a visit to the mediaeval garden '**Le jardin des deux tours**' (**Garden of the two towers**).

- € 9 per person – minimum 15 people.

* GREAT IDEA!

Citadel PASS:

- A guided tour + train + visitor centre open access: € 16.
- 2 guided tours + train: € 22.

* GUIDED TOUR OF THE RAMPARTS (2 H)

A great way to experience the life of the Counts of Namur and the successive sieges that have made their mark on the history of this impressive fortress.

- From 12 people: € 6 per person.
- Fewer than 12 people: fixed rate of € 72 for the whole group.
- Useful tip: wear comfortable shoes.

* GUY DELFORGE PERFUMERY (1 H)

Visiting the Delforge Perfumery Workshop offers an opportunity to discover the world of perfumes in general and our own in particular; to learn about the various stages in the research, composition and creation of unique fragrances; to go through the Workshop and its underground passages and immerse yourself in the history of its exceptional building set at the very heart of the Namur Citadel; and finally, thanks to sound advice, to find to the perfume that matches your personality.

- € 3 per person.
- Rate applicable as of 15 people.
- From Monday to Saturday, except public holidays.
- Maximum 40 people at once.
- 15-minute interval between groups.





© Denis Closson

* LE PAVILLON ↗

The Pavilion is the place to be when it comes to digital culture in Wallonia. This new exhibition centre on the Esplanade of the Namur Citadel unravels the digital culture through the points of view and daring creations of researchers, entrepreneurs and members of the public. In keeping with the aim of the centre, the focus here is very much on life and society today.

- Admission: € 6 per person – minimum of 10 people.
- Guided tour: maximum of 20 people: fixed price of € 70 per guide
- Price and duration: +/- 1 hr 30 min. depending on the exhibitions.



© M. Voglet

↖ *

CABLE CAR

Climb aboard the cable car to reach the esplanade of the Citadel or the historic centre of Namur in less than 7 minutes! Make the most of your trip to admire the landscape.

- Groups (min. 15 people)
- Adults: € 6.50 per person return – € 4.50 single.
- Senior citizens (65+), children (4 to 17), young people and students, PRM: € 5 per person return – € 3.50 single.
- Free for the under-4s.

Our guided tours ✿

* AT THE HEART OF THE HISTORIC CENTRE OF NAMUR

The classic visit around the unmissables of Namur. Through the narrow streets of the Walloon capital, revel in the charm of an **outstanding architectural heritage** dating mainly from the 18th century. Breathe in the atmosphere of these districts that lend the city such a special ambiance.

'Namur by Night' visit also possible.

* UNUSUAL NAMUR

Discover the city through its unusual places or objects. You pass by without noticing them and yet there they are, one more astonishing than the other!

Follow your guide from surprise to surprise!

* STREET ART IN NAMUR

Frescoes and graffiti are flourishing on the façades and gables of Namur. Behind the coloured walls is a city project that aims to bring art within reach of everyone and invite local people to join in. Works by famous artists, communities and associations or by anonymous creators challenge us and take a look at the modern world. A contemporary adventure to be discovered on (almost) every street corner.

* STATUES AND FRESCOS IN THE CITY

Imposing or discreet, classical or contemporary, amusing or intriguing, the **statues, sculptures and frescoes of Namur** hail you as you pass by... Why not take the time to observe them and discover what they have to tell us.



© Service culture



© Pixel Komando / OTN



*** NAMUR, A CAPITAL CITY UNDER CONSTRUCTION!**

Namur entered the 21st century full of determination. During this city walk, discover the **various development projects** already undertaken and yet to come, including the new districts around the railway station, the barracks district, the Confluence esplanade and the Enjambée cycle-footbridge, an extension of the pedestrian zone, and more.

*** FROM THE CONFLUENCE TO THE MARINA**

In an outstanding setting, your guide will reveal the 'cradle of Namur': the Sarasse district, the Confluence, its past, present and future urban development.

From the left bank to the right, crossing the Enjambée bridge, come and relive the 1900s: the Kursaal (casino), the Royal Club Nautique (rowing club), the regattas, Art Nouveau, Art Deco, etc., as well as contemporary works.

*** CYCLE RIDE ALONG THE MEUSE / SAMBRE RIVERS**

Perfect for cycling enthusiasts! Go and explore the Meuse and Sambre valley, with its typical villas, its castles and its abbeys.

- Bike hire (upon payment of a supplement).



Rates and conditions (2 h).

Guided tour of choice.

Minimum 12 people: € 6 per person.

Groups of fewer than 12 people: fixed rate of € 72 for the whole group.

School groups: fixed rate of € 65/25 students.

By night: from 5.00 pm.

€ 9 per person – minimum 12 people.

*** PANORAMIC TOUR ABOARD YOUR COACH**

Explore greater Namur and the Meuse Valley.

OR

Explore the **'Most Beautiful Villages of Wallonia'** located in the region.

- Thon-Samson, a village built entirely of stone and its fortified farmhouse brimming with authentic charm, overlooking the Samson valley.
- Crupet, a charming little village bathed in the main tributary of the Bocq and perched on the slopes of a steep-sided, wooded valley. Visits on foot also possible. Length of visit to be determined as you wish.

- Fixed rate of € 85 per guide (2 h).
- Possibility of booking a coach, upon payment of a supplement.

Museums

* FÉLICIEN ROPS MUSEUM

In this former mansion house **at the heart of old Namur**, come and discover the works of the Namur artist **Félicien Rops**. Follow the main stages in his life: his beginnings in social satire and caricature, lithography, the Baudelaire spirit, Parisian life, the omnipresence of women, death and eroticism. The museum also organises temporary exhibitions accompanied by publications on topics related the 19th century, engraving or the works of Rops.

- Admission only: € 2.50 per person – minimum 5 people.
- During temporary exhibition: € 4 per person – minimum 5 people.
- Possibility of booking a guide: fixed rate of € 60 for the group (1 h). Closed on Mondays, except in July and August.



* TREM.A - MUSEUM OF ANCIENT ART

Set at the heart of the city, the Trem.a – the Provincial Museum of Ancient Art - holds out the promise of a trip through the Middle Ages and the Renaissance, discovering the workshops, artists and craft workers of the Sambre and Meuse valleys. From the **Trésor d'Oignies** (Oignies Treasure) to the paintings of the Belgian landscape artist **Henri Bles**, as well as Mosan sculptures and the work of local specialists, discover the splendours and history of **Namur's regional heritage**. Outstanding collections that have been kept, studied and displayed since 1964 in an 18th-century mansion house bequeathed by the family of Gaiffier d'Hestroy.

- Admission only: € 2.50 per person, minimum 5 people.
- During temporary exhibition: € 4 per person – minimum 5 people.
- Possibility of booking a guide: fixed rate of € 60 per guide for a one-hour visit, € 60 at the weekend.
- Closed on Mondays.

* LES BATELIERS – MUSEUM OF DECORATIVE ARTS AND ARCHAEOLOGICAL MUSEUM

The Museum of Decorative Arts is set in the former private home of the counts of Groesbeeck and the marquises of Croix, enhanced by a **garden in the French style**, evoking the atmosphere of a nobleman's residence during the Age of Enlightenment. Alongside it, the Museum of Archaeology (currently undergoing work) aims to offer visitors the chance to rediscover archaeological collections devoted to the Namur region in a brand-new exhibition space.



Les Bateliers is a real island of culture connecting the Félicien Rops provincial museum, the Maison de la Poésie poetry centre and the Maison du Conte storytelling centre through public gardens that hold temporary exhibitions and permanent works (poem chairs by Quebec sculptor Michel Goulet, fresco by Tamar Kasparian, miniature sculptures by Spanish artist Isaac Cordal).

- Admission free.
- Guided tour on request only.
- From Tuesday to Sunday, 10.00 am to 6.00 pm.
- Closed on Mondays and public holidays.

* DIOCESAN MUSEUM

The museum, which stands the next to **St Aubin's Cathedral**, houses **religious works** offered by canons, bishops or abbeys such as Brogne or Floreffe.

- Admission: € 3 per person / € 2 for students – minimum 10 people and maximum 20.
- Guide upon payment of a supplement: fixed rate of € 50.

* WÉPION STRAWBERRY MUSEUM

Discover the **inimitable Wépion strawberry** and the specific local features of Wépion: its culture, its history and the very special place that this little fruit holds in the local heritage and the gastronomy of Namur. The museum visit continues with a walk to discover the berries in the garden opposite.

- Admission and guided tour: € 4 per person – minimum 10 people
- upon reservation.

* COMPUTER MUSEUM (NAM-IP ASBL)

The museum aims to safeguard, preserve and highlight the heritage that forms **the history of IT in Belgium** and lies at the origin of the new digital culture.

- Admission only: € 6 per person – minimum 5 people.
- Guided tours:
 - Fixed rate 1-10 people: € 135
 - Fixed rate 11-20 people: € 195
 The fixed rate covers admission and the guided tour. Maximum 20 people per guided tour. Supplement of € 50 outside regular hours (upon request).

* COMMANDOS MUSEUM – FLAWINNE

This museum tells **the story of the Belgian commandos** from 1942 to the present. Here you can discover their equipment, their weapons and the various vehicles used.

- Free admission and guided tours - upon reservation.
- Open on Saturday afternoon from 1.00 pm to 5.00 pm.
- Length of visit: 2.30 h.
- Maximum 50 people per visit.

Heritage

* SAINT-LOUP CHURCH

Saint-Loup Church, standing in the **historical heart of Namur**, is one of the **gems of Baroque art** in the old southern Low Countries (Belgium). Built between 1621 and 1645 by architect Pieter Huyssens, a member of the Brotherhood of Jesus, it faithfully reflects the precepts of the 16th-century Counter-Reformation undertaken by the Council of Trent. The vault, marble and furniture (confessionals and communion rail) make this church **part of the 'outstanding heritage of Wallonia'**.

- € 3 per person for admission to the church.
- Guided tour subject to payment of a supplement, to be combined with the old districts: € 6 per person – minimum 12 people or fixed rate of € 72 for groups of fewer than 12 people.



* **THE PARLIAMENT OF WALLONIA** ♿

Take a guided tour to find out about **the daily lives of parliamentarians** and the organisation of their work. From its examination in committee meetings to the vote in plenary sessions, every aspect of the path followed by a decree will be revealed to you. You will also be able to explore the **archaeological remains**, the Cabinet room and the Parliamentary library.

- Group visits are preferably arranged on Mondays and Fridays, as well the second Saturday of the month. Minimum 5 and maximum 30 people.
- Admission and visit entirely free of charge.

* **THE DELTA** ♿

The Delta, where **culture** is experienced naturally and freely. The interior layout promotes a warm, friendly atmosphere and free movement. The hall, the panoramic terrace and the foyer of the great hall are open to visitors during the day.

- Fixed rate of € 40 per group of maximum 25 people.





Les Bateliers

Rue Joseph Saintraint 3 à 5000 Namur - 081/24 87 20

www.lesbateliers.namur.be

 [lesbateliersnamur](https://www.facebook.com/lesbateliersnamur)

LES BATELIERS

FREE ACCESS

Museum of Decorative Arts: from January to December.

NEW!

Archaeological Museum:

Opening of new exhibition halls in the second half of 2024.

Les Bateliers, located at the heart of Namur, is home to two municipal museums, the Archaeological Museum and the Museum of Decorative Arts with its garden in the French style. Listed as part of the exceptional heritage of Wallonia, the Museum of Decorative Arts is housed in a magnificent private mansion dating from the Age of Enlightenment, the Hôtel de Groesbeek - de Croix.

The museum, which has a lovely French-style garden, displays a superb collection of decorative art spanning the period from the 17th to the 19th centuries: furniture, timepieces, paintings, sculptures, crystal, earthenware and more. These pieces, created by artists and workshops in Namur, bear witness to the daily lives of the aristocracy in the 18th century.

The Archaeological Museum of Namur has built up a major reputation in Europe due in particular to its collections from late Roman Times and the Merovingian period.

The collections of the Archaeological Museum of Namur are among the richest of the Wallonia-Brussels Federation. The items kept here extend from Prehistoric Times to the early Middle Ages or even the contemporary period as regards the lapidary collections. The pieces come mainly from the Province of Namur and the surrounding area.





© Philippe Piraux

* **NAMUR INTELLIGENTE DURABLE (NID)**  **(NID SUSTAINABLE SMART NAMUR)**

This is a unique place that puts the general public at the heart of the debate about the future of their city. It questions the **role of cities**, and in particular Namur, faced with the major challenges of the future. Through the scenography in the building at the Grognon, but also through activities, debates, lectures, exhibitions and more. These and many other issues are presented and debated at the NID. There are three spaces: 'Namur in question', 'Namur in transition' and 'Namur Tomorrow'.

- Length: 1.30 h - From 12 years.
- Free admission and guided tours - upon reservation.

* **SAINT JULIE'S CENTRE**

Saint Julie's Church lies in the **convent of the Sisters of Our Lady of Namur**, a teaching congregation found on every continent. Rebuilt after the bombardments of 1940 and 1944, it now welcomes those who wish to discover the life and spirituality of **Saint Julie Billiart**.

This very modern exhibition was designed to arouse emotion in visitors: videos, photos, souvenirs of the beginnings and the worldwide expansion of the congregation, testimonies

- Free admission and guided tours by request only.

* **NOTRE-DAME DU VIVIER ABBEY**

Seven kilometres to the east of Namur stretches Notre-Dame du Vivier Abbey. It has stood here, on the edge of the **Marche-Les-Dames** woods, for almost a thousand years. Discover its history and explore all its secrets and its charms. Group visits led by history specialists. A meal can be arranged if required.

- 1 hr 30 min. visit: € 10 per person – minimum of 20 people.
- 2 hrs 30 min. visit: 12 € per person – minimum of 20 people.



* **MAREDSOUS ABBEY (26 KM)** 

Come and discover this relaxing and spiritual place in an outstanding natural setting with two types of guided tour available: a tour of the abbey (the monks' private domain: the church, cloisters and gardens) and tasting tour (the micro-brewery, hop garden and cheese dairy + tasting and souvenir gift).

- Admission to the site is free.
- Tour of the abbey – 1 hr 30 min.: € 6 per person (minimum of 25 people).
- Tasting tour – 1 hr 30 min.: € 18 per person (minimum of 25 people).

Namur, home of **Houpe.**



Brasserie de la Houpe, located in the former Crieé aux Fraises in Wépion, Namur, opens the doors to its new facilities. Discover the history of our brewery and follow the production path of our beers such as Houpe, Jambes en l'air and Slip, as well as our Brewrocks editions. Come and share our passion in a place imbued with tradition and unique flavours.

www.houpe.be



Petits détours, grands moments.
Notre savoir-faire se déguste avec sagesse.

Brewed in Belgium

houpe.be





Tasting

Let the magic work and your senses awaken...
The flavours of Namur will enchant you!
Savoury delights, sweet treats or refreshments.
The choice is yours!




* GOURMET WALK


This **original guided tour** through the most beautiful streets of the Walloon capital is punctuated by several gourmet stops. The principle is simple! You choose up to three (2 hours) or five (3 hours) tasting sessions, savoury, sweet or both. We then reserve the guide who will accompany you on your walk.

- Tasting from € 2.50 per person.
- Services of the guide: from € 6 per person for two hours – minimum 12 people.


A few suggestions... (Full list available upon request)



LE BIÉTRUMÉ : Butter and chocolate caramel based on fresh cooked cream and grilled hazelnuts. This sweet was created in 1956 by the Fronville-De Hucorne chocolate maker for Namur folklore. It takes its name from a Namur prankster who lived in the 18th century - the young Biétrumé, who was born in 1704, was famous for making grimaces, imitating accents, faking his voice and hoaxing the middle classes.



L'AVISANCE: This is a flaky pastry casing stuffed with minced meat and served hot. It dates back many, many years, to the time when the people of Namur went on pilgrimages to Notre-Dame de Halle. It was a long journey, undertaken on foot. People took food with them, in particular a pancake wrapped round leftover meat. The pilgrims said that they 'avaisaient', i.e. they took precautions. Over time this pancake thus became known as 'L'avisance'.



LA HOUPPE: La Houpe is the leading beer from the Brasserie de Namur. It is a blonde beer with coppery hints containing 7.5% alcohol that will enchant you with its fine, balanced bitterness. Its aromatic nose betrays the presence of a subtle blend of three varieties of hops. The attack phase is smooth, revealing hints of citrus fruits.

New!

GET YOUR TEETH IN TO THIS ALL-CHOCOLATE TOUR

The best chocolate makers in Namur have joined forces to help you discover their delicious products and share their love of chocolate with you. During this walk, your guide will tell you all about Namur, its historic centre and its unique history.

- Price: € 14 per person (minimum of 12 people)
- 2-hour long visit
- From Tuesday to Saturday



© M. Vogliet

* GOURMET RALLY

Discover **the old districts in combination with a full meal**, from aperitif to dessert. Each course is served in a different establishment. Between courses, stroll through the city's most beautiful streets together with your guide.

- Price and length depend on your wishes and your budget!
- From € 75 per person per meal – guide and drinks included.



MPT - Denis Erroyaux



© Cuisine Sauvage

*** WILD CUISINE WORKSHOP** 🍷

This is a two-part activity: a walk to find **edible wild plants**, followed by a cookery workshop when all the participants prepare the meal, which they then share. Included: the creation of an activity geared to your needs, provision of an activity leader skilled in botany, cooking and entertainment, the development of a specific circuit and menu, leadership of the group, the food supplies and purchases, small items of equipment.

- € 49 per person – minimum 10 people.
- Maximum 12 people.
- Length: 5 hours.

*** “BRASSERIE DE LA HOUPPE”**

Located in the former Crieé aux Fraises de Wépion, Namur, opens the doors to its new facilities. Discover the history of the brewery and follow the production path of the beers such as Houppe, Jambes en l’air and Slip, as well as our Brewrocks editions.

- Tour of the brewery and tasting: € 12 per person - minimum of 20 people.
- Beerology tour: guided tour, tasting and introduction to beerology: € 20 per person – minimum of 20 people.

*** “LA BRASSERIE DU CLOCHER” – MALONNE**

The former small Piroy church in Malonne is the cradle of “Philomène” beers. With a love for their village and its terroir, Alex, Dominique and Lionel set up a craft micro-brewery here in December 2015, where the brewhouse has replaced the altar and the fermentation vats occupy the aisles. Come and discovery this highly original venue and share your wonder with the project’s creators, three friends with a passion for quality beer, who have pursued their dreams.

- Visit and one tasting (18 cl): € 8 per person.
- Visit and range of tastings (5 x10 cl): € 12 per person.
- Minimum 8 people - max 30 people

*** CARACOLE BREWERY – FALMIGNOUL (45 KM)**

In a picturesque 18th century building, the Caracole brewery produces **four Belgian beers full of character: Caracole, Troublette, Saxo and Nostradamus**. At the end of the visit, taste these craft beers brewed using traditional methods in copper tanks heated over a wood fire.

- € 12 per person – minimum 20 people.

*** BEERYTRIP** ❤️

Are you a **beer enthusiast**? Would you like to **visit Namur from an unusual perspective**? Discover cool places? Spend a day differently? Then the **beerytrip is just the thing!** You will have the chance to visit the capital of Wallonia, stopping in various places dedicated to beer and learning about zythology.



© Beerytrip

In the form of modules or for a full day:

- Initiation to zythology: The art of beer tasting - The history of Belgian beer - The art of serving beer - Beeryquiz
- Initiation to food pairing - Meal served with appropriate beers
- Initiation to beer mixology

- From € 40 to € 80 per person, depending on the formula chosen – minimum 10 people.
- Three-hour to full-day formula

*** BEER AND FOOD TOUR**

Activity offering you the opportunity to discover the brewing world by taking a gourmet walk while visiting the city at the same time! Three-course meal in three different places as you find out about zythology while visiting the city of Namur. The brewing team of the day will be elected by a Beeryquiz at the end!

- Length: 4 hrs 30 min. to 5 hrs depending on the size of the group. For groups of 10 to 60 people.
- Price: € 60 per person (tour, drinks, meals included).
- Alcohol-free and/or vegetarian options available.



* **CROMPECHINE - CRAFT CIDER AND WINE MAKING – MARCHE-LES-DAMES (10 KM)**

The cider and winemaking project was set up in 2017 following the planting of the first orchard with standard trees and a vineyard. Since then, over 500 other apple trees have been planted, together with a two-hectare vineyard. Both products are made with care using traditional methods. These products reflect the outstanding Namur region and are certified organic.

- Visit: € 9 per person.
- Visit & Tasting: € 12 per person.
- Minimum 12 people with tasting.
- From April to September (out of season upon request).

* **DOMAINE DU CHENOY – EMINES (11KM)**

The Chenoy Wine Estate was set up in 2002. It is a pioneering Belgian vineyard that respects its corner of the Namur countryside. Having had the **organic winegrowing label** since the 2019 vintage, thanks in particular to the use of disease-resistant grape varieties, the owners produce fine, **balanced gourmet wines**. Their winemaking philosophy can be summed up as original, local production of superior wines using environmentally friendly methods, to the delight of all.

- € 15 per person (including tasting) – minimum 10 people.
- Length: 2 h.

GOURMET CRUISE – DINANT (30 KM)

Discover the Meuse Valley by boat and learn about the history as well as anecdotes of this thousand-year-old town whilst enjoying a delicious menu of regional produce. This small town, the birthplace of the famous inventor Adolphe Sax, has more than enough surprises in store for you!

- Book to visit throughout the year.
- Length: +/- 3 hrs
- From € 57 per person (minimum of 50 people).

* **BIOUL CASTLE (21 KM)**

Nestling at the heart of the '**Vignouille Historique**' or **historic winemaking region of Bioul**, in the Meuse valley, Bioul Castle is the scene of a beautiful love story between its heritage and its 14 hectares of vines. On the programme: '**Made in Bioul**' is an interactive discovery path that will immerse you in the history of the castle and its organic vineyard, followed by an **opportunity to taste the cuvées**.

- Book to visit throughout the year.
- A guide is available as a highly recommended extra: € 85 per group of 25 people.
- Made in Bioul visit and access to the park: € 9.50 per person.
- Made in Bioul visit and access to the park + tasting of one cuvée: € 14.50 per person.
- Made in Bioul visit + access to the park + tasting of three cuvées: € 22.50 per person.
- Minimum 15 people.

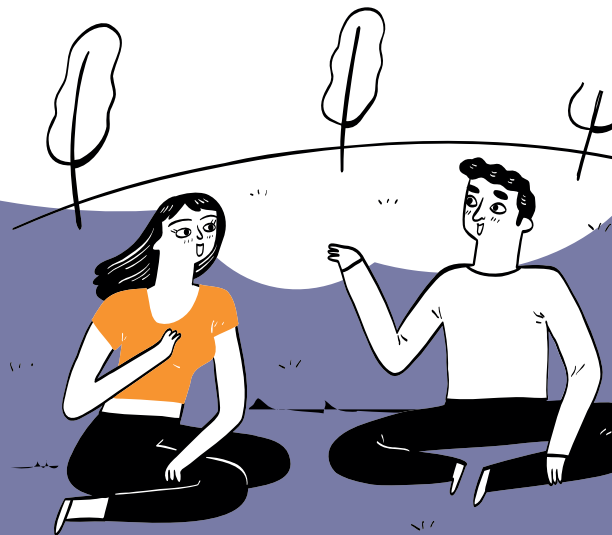
* **WARNANT SNAIL FARM (23 KM)**

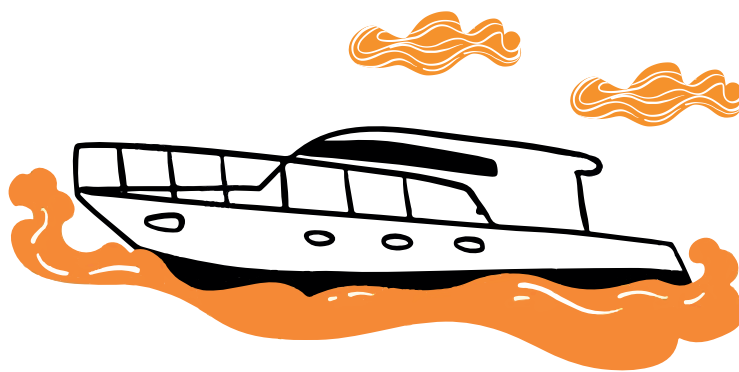
An experienced guide will take you to visit the **breeding programme, from mating to fattening**, including laying and hatching. This educational, fun-filled visit will end with a small tasting session.

- From Monday to Saturday (April to November). Closed in the first two weeks of September every year.
- Visit + 1 tasting: € 4 per adult € 3.50 for the under-12s.
- Visit + 3 tastings + 1 drink: € 8 per person.
- Minimum 12 participants.

Relaxing

Namur is a great place to walk! Take the time to roam around this green oasis, down its paths, through its forests and along its banks, at your own pace, on foot, by bike, by boat or even on a stand-up paddle.





Along the water

➔ LA CROISIÈRE MOSANE MEUSE ARDENNES BOAT

Come aboard at the confluence of the Sambre and the Meuse rivers for a delightful cruise to discover Namur and/or the Meuse Valley.

- * **NAMUR BETWEEN THE SAMBRE AND THE MEUSE:**
Namur along the water between its three locks (50').
Daily except Wednesdays, from April to September.

- € 10 per person and € 7 per child.
- € 8 per person – minimum 20 people.

- * **NAMUR-WÉPION :** discover the Meuse Valley and its cultural wealth (1.45 h).

- Daily except Wednesdays in July and August.
- € 15 per person and € 11 per child.
- € 13.50 per person – minimum 20 people.

- * **NAMUR-RIVIÈRE-ANNEVOIE (4h)**

- Upon request only for groups of minimum 40 people.
- € 18 per person.



* **CRUISE WITH THE BARGE 'LE CHARLES'**

Barge accessible for groups of maximum 12 people.

Several formulas available:

- One-hour sailing: Namur-La Plante or Namur Sambre & Meuse: fixed rate of € 300 during the day and € 325 in the evening.
- Two-hour sailing: Namur-Wépion: fixed rate of € 435 during the day. Not available in the evening
- Four-hour sailing: Namur-Profondeville: fixed rate of € 765 during the day. Not available during the evening
- Included in the price: private barge, navigation, crew, 180-cm TV screen, Wi-Fi, tableware, drinks (coffee, tea or still water), 35 m² terrace, fixed cleaning charge.

THE CAPTAINERIES OF NAMUR

A **leisure and relaxation space** in a welcoming setting with a clear view of the Citadel. Floating terrace, bar and light refreshments. Hire of stand-up paddle, boats that do not require a licence, kayaks and giant paddle (up to 8 people!). Organisation of private and professional events, concerts, sports events, etc.

- From 15 April to 15 October
- From 3 to 500 people
- Price on request



© Les Capitaineries

* Kayaking down the Lesse River – Anseremme (40 km). This great classic of water sport attractions is ideal for group outings! Whether for a simple paddle or a more sporting version with the Lesse Trophy, there is always an unforgettable time to be had in the superb Lesse Valley. From April to October.

- Route: 9 km (+/-2 hrs) – 12 km (+/-2 hrs 30 min.) or 21 km (+/-5 hrs).
- From € 25 per person.

* **KAYAK – BARGE "LE FORMIGNY"**

Go on board your canoe-kayak alone or in pairs for a trip on the Meuse.

This sports activity, which is accessible to everyone, will offer you an opportunity to relax in harmony with nature. Look up to discover the city's main tourist assets from a different point of view.

- Single canoe-kayak: € 15/hour
- Double canoe-kayak: € 20/hour
- 1 single kayak and 4 double kayaks available

* **MEUSE CRUISES – DINANT (30 KM°)**

On board the 'Mouche', the 'Copère' or the 'Sax', head off to explore the most natural slopes of the Upper Meuse between Dinant and the French border.

- Dinant-Anseremme (45 minutes): € 8 per person – € 6.50 under 12 years – minimum 20 people.
- Daily from April to October.
- Dinant-Freÿr (2 h): € 13.50 per person – € 10.50 under 12 years – minimum 20 people
- Daily from May to September.
- Themed cruises: for groups from 30 people with a meal on board, musical entertainment, cultural stops and more. Rates on request.

Off you go!



* **SEGWAYNAM - TRIP ON A SEGWAY**

Organise a discovery circuit for memorable team moments. Perched on your Segway, explore Namur and its Citadel in a very original way.

- € 49 per person for 2 hours.



© SB - D'Aimont / OTN



* **VESPA TOUR** 📍

Discovering the city centre or storming the Citadel, exploring the most beautiful villages in Wallonia, passing by amazing viewpoints, following circuits charged with history or enjoying hilarious treasure hunts - you will find something to suit every taste! There are **five circuits** to choose from. Follow your sat nav and enjoy the **delights of two wheels**. Sense of freedom guaranteed!

- 10 Vespas available – maximum 2 people per Vespa.
- From 21 to 65 years old, driving license needed
- From € 62 per person for 4-hour hire.

* **OFF-ROAD ELECTRIC SCOOTER – BARGE «LE FORMIGNY»**

Come and explore our magnificent Namur Citadel on an off-road electric scooter. A new way of crossing through woods and forests along waymarked paths.

- Length: 1.30-2.00 h.
- 7 scooters available – minimum 10 years and 50 kg with a maximum of 95 kg.
- € 50 per person.
- Helmet provided – Closed shoes (not provided) mandatory.

* **ALL-TERRAIN ELECTRIC SCOOTER / ELECTRICALLY-ASSISTED MOUNTAIN BIKES -TROT-E-FUN - ANSEREMME**

A new way to discover the Dinant region with your colleagues! The principle is simple: take a ride on a fully electric all-terrain scooter or electrically assisted mountain bike that is silent and very easy to ride. For the scooter, there is no need to be very sporty, a little balance is all you need. One person accompanies the group during the ride. The route is adapted to the group's level.

- From € 40 to € 55 per person according to the activity and its length.
- For groups of 11 people or more, a second guide is compulsory and for groups of 21 people or more, a third guide is compulsory: there is an additional charge of € 60 euros per guide.



© Explore Meuse - Denis Closon

Côte nature



* SMALLFRUITS GARDEN – WÉPION

This small fruit orchard is the ideal place to discover all the varieties of small fruit in our gardens, whether exotic, wild or from our regions, such as the emblematic Wépion strawberry. As the garden has been awarded a quality label, you can taste the ripe fruit on site.

- Free admission from 1st May to 30th September included, from Tuesday to Sunday, from 11.00 to 18.00 and from 1st October to 30th April, from 13.00 to 17.00 including public holidays (closure of the entrance 30 minutes before).



© WBT - Bons Baisers d'Aurélië



* EDIBLE PLANTS WALK

Why not try an **unusual and original walk**: discovering **edible wild plants**! No need to be a botanist or a chef! The main aim is to enjoy yourself: you pick, you smell, you taste, you talk cooking. And you laugh a lot, too...

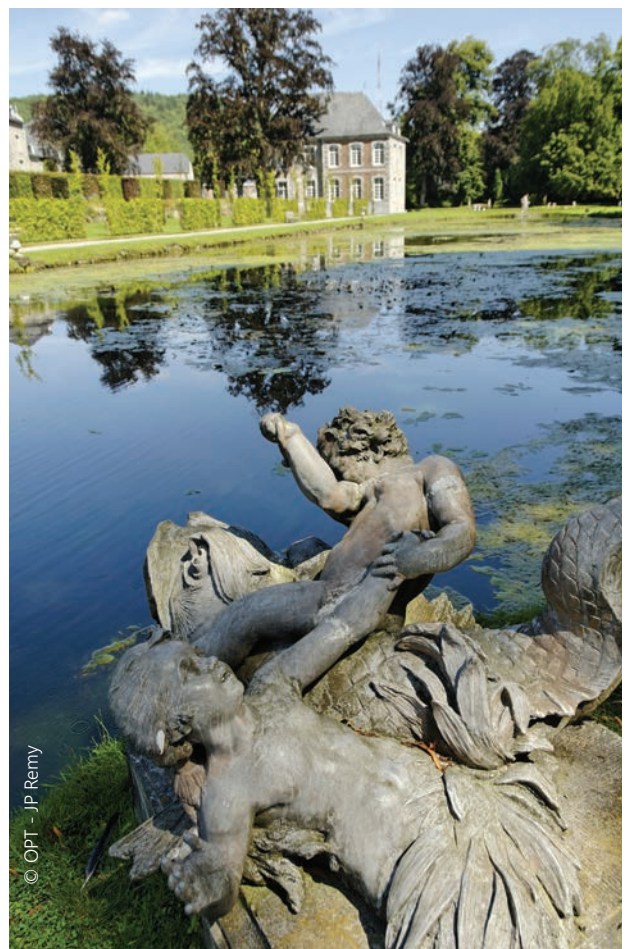
The guide, **who is skilled and enthusiastic**, teaches you how to recognise around ten edible plants and passes on his best recipes for using them. Amazing! Just imagine the creamy soups or delicious sorbets that can be made using a simple plant picked along the roadside... You are offered a little something to taste at the end of the walk. Possibility of organising a 'wild cuisine' workshop. See page 16.

- Walk upon request at the Citadel:
€ 10 per person – minimum 15 people.
- Walk upon request at Cuisine Sauvage in Jambes:
€ 9 per person – minimum 15 and maximum 25 people.
- Length: 2 h to 2.30 h.

* ANNEVOIE GARDENS (20 KM)

Stroll from fountain to fountain in these **superb gardens**, a blend of French, Italian and English styles. An unforgettable visit!

- € 9 per person – minimum 20 people – admission only.
- Possibility of booking a guide at a cost of € 70 for a maximum of 30 people.
- Length of visit: +/- 1.30 h.



© OPT - JP Remy

DINANT Évasion



**KAYAK ON
THE RIVER LESSE**



**ADVENTURE
PARK**



**CRUISES ON THE
RIVER MEUSE**



**PLEASURE BOATS
RENTAL**



**HÔTEL
& GÎTES**

Sport, emotions, sensations, Dinant Evasion is **more than 30 activities to choose from for all your desires for action, relaxation and discovery.** And to not miss anything,

the best way is to stay ! **Hotel room (2/5/18p.) or comfortable gîte (33/50p.), a solution for every trip: with family, with friends, but also with colleagues!**

INFO@DINANT-EVASION.BE | RUE DU VÉLODROME 15 - 5500 DINANT
WWW.DINANT-EVASION.BE

Accommodation

Other atmospheres come forth at night...
The warmth of the city centre, with great after-show options on the water's edge, an evening spent strolling through the historic heart and more.



MERCURE **** NAMUR

100 rooms
+32 81 64 92 20 - www.circuscasinoresort.com/hotel/

THE ROYAL SNAIL **** NAMUR

37 rooms – 74 guests
+32 81 57 00 23 – www.theroyalsnail.com

LES TANNEURS **** NAMUR

36 rooms – 64 guests
+32 81 24 00 24 – www.tanneurs.com

HOTEL LE 830 NAMUR****

42 rooms
+32 81 84 08 30 www.hotel830namur.be

IBIS NAMUR CENTRE ***

92 rooms – 191 guests
+32 81 25 75 40 – www.ibis.com

GRAND HÔTEL DE FLANDRE *** NAMUR

33 rooms – 70 guests
+32 81 23 18 68 – www.hoteldeflandre.be

BeB HOTEL NAMUR ***

105 rooms
+32 81 23 40 10 www.hotel-bb.com/fr/hotel/namur

IBIS STYLE *** NAMUR

99 rooms – 220 guests
+32 81 74 55 55 – <https://all.accor.com>

CHÂTEAU DE NAMUR ****

29 rooms – 56 guests
+32 81 72 99 00 – www.chateaudenamur.com

DOMAINE DE RONCHINNE *** MAILLEN

42 rooms – 92 guests
+32 81 41 14 05 – www.domainederonchinne.be

LES JARDINS DE LA MOLIGNÉE **** ANHÉE

52 rooms – 115 guests
+32 82 61 33 75 – www.jardins.molignee.com

IBIS DINANT CENTRE ***

58 rooms – 116 guests
+32 82 21 15 00 – www.ibis.com

CASTEL DE PONT-À-LESSE *** ANSEREMME

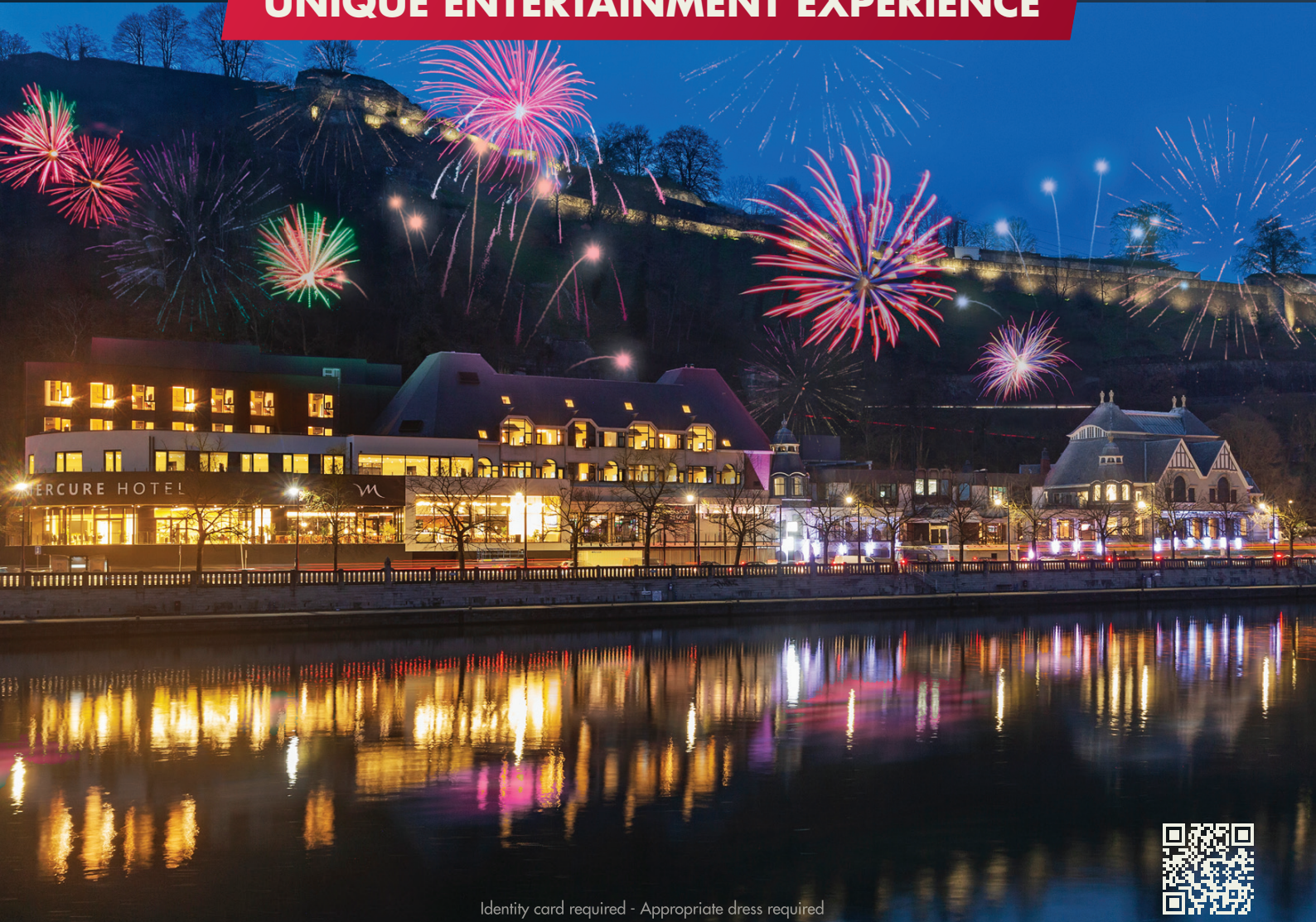
91 rooms – 215 guests
+32 82 22 28 44 – www.casteldepontalesse.be

AUBERGE DE JEUNESSE DE NAMUR

23 rooms – 93 guests
+32 81 22 36 88
www.lesaubergesdejeunesse.be/namur

Circus CASINO RESORT NAMUR

UNIQUE ENTERTAINMENT EXPERIENCE



Identity card required - Appropriate dress required

Hotel Mercure **** • Seminars & events • Bistronomic restaurant • Wellness





GUY DELFORGE
PARFUMS

A visit to the *Atelier de la Parfumerie Delforge* is a chance to discover the world of perfumes in general, and ours in particular; to learn about the different stages of research, composition and creation of unique scents; to walk through the Workshop and its underground passages and immerse yourself in the proud past of its exceptional building in the heart of the Citadel of Namur; and finally, to avail yourself of sound advice in order to find the perfume that matches who you are...



VISITS TO THE WORKSHOP (+/- 1 hour)

Guided or audio-guided tours in French, Dutch, German, English, Spanish and Italian.

- individually, on Saturdays (except public holidays) at 3:30 pm, during the school holidays, from Monday to Saturday (except public holidays), at 3:30 pm.
€3.50 per person (€3.00 for children under 12).

- degressive rates for groups: custom quote and by reservation.

THE SHOP open access year round
Monday to Saturday, 10:00 am to 6:00 pm
(5:30 from November to February inclusive)
Sundays and public holidays, 2:00 to 6:00
(5:30 from November to February inclusive)



ATELIER DE PARFUMERIE GUY DELFORGE

ROUTE MERVEILLEUSE, 60
B-5000 NAMUR-CITADELLE