



FRENCH AIRPORT AND ATC TECHNOLOGY TRADE ASSOCIATION

www.proavia.com



PROAVIA French Airport
Technology

A to Z PROAVIA's MEMBERS

- AÉROPORT NICE CÔTE D'AZUR
- AIA Life Designers
- AIRBUS PROTECT
- Airport Fluid Distribution Networks
- ALFYMA
- ALPHA AIRPORT
- ALPHA-CIM
- ALSTEF AUTOMATION
- APAVE
- ARC INFORMATIQUE
- ARTELIA
- AUGIER
- BA HEALTHCARE
- BODET TIME
- BOUYGUES BÂTIMENT INTERNATIONAL
- CC-CONSULTING
- CODRA
- COLAS
- CS France
- DAIA
- DEF
- DEGREANE HORIZON
- EASIER IER
- EGIS AVIA
- EIFFAGE CONCESSIONS
- ENIA architectes
- ENVISA
- EQUANS
- FRACS - France AVIATION SERVICES
- GROUPE ADP
- GROUPE EUROPE HANDLING
- GUINAULT
- HUB PERFORMANCE
- IDEMIA Identity & security France
- IN GROUPE
- ORNISEC
- OSP HOLDING / ORBILITY
- OTIS France
- OUTSIGHT
- PIXYS
- RESA
- SCHNEIDER-ELECTRIC INDUSTRIES
- SETEC INTERNATIONAL
- SMITHS DETECTION France
- SYSTRA France
- TAQT
- TG CONCEPT
- THALES
- VINCI Airports
- WaltR

AÉROPORT NICE CÔTE D'AZUR SA

Provides consultancies, services and training, project management, safety and environment audits, route development, management contracts and concessions.

REFERENCES

- Tahiti Airport
- Corsica Airports
(Ajaccio, Bastia, Calvi, Figari)
- French West Indies and
Overseas territories
- Cyprus Bot Project
- Cameroon Airports
- Cayenne
- Dakar Airport
- Sion Airport





LIFE DESIGNERS

REFERENCES

- Roland Garros Airport, Réunion island
- Nantes Atlantique Airport, France
- Aimé Césaire Airport, Martinique island
- Toulouse Blagnac Airport, France

Architecture

Engineering

Environment

Natural ventilation

SUSTAINABLE AIRPORTS



diagnostic facilities

network design

definition of
markets

monitoring
realization and
commissioning
installations

REFERENCES

- International Airport Felipe ANGELES | MEXICO
- IVATO International airport | MADAGASCAR
- ROISSY CHARLES DE GAULLE Paris international Airport | FRANCE
- PARIS-ORLY Airport | FRANCE

AIRPORT FLUID DISTRIBUTION NETWORKS

Consultant in the field of hydrants (Jet-fuel networks)
or other fluids (water, glycol ...)



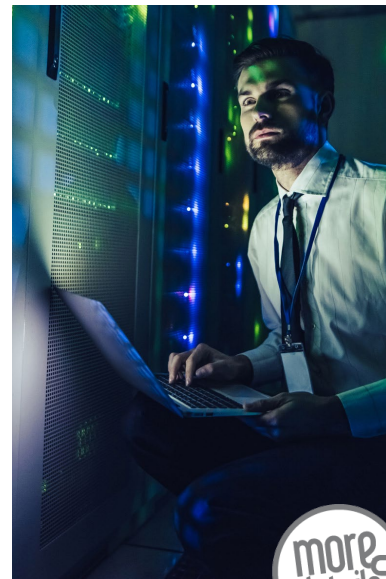
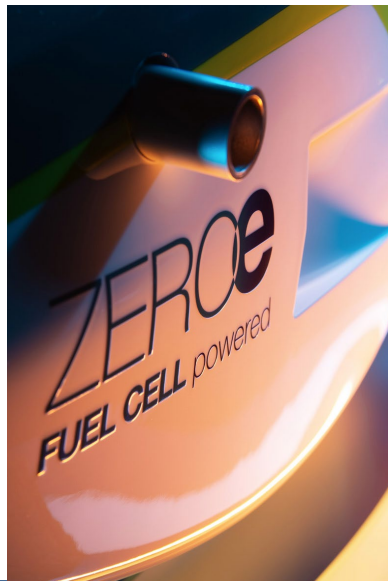
PROTECT

AIRBUS PROTECT

is an Airbus subsidiary bringing together expertise in safety, cybersecurity and sustainability-related services.

REFERENCES

- DSNA
- AIRBUS
- NATS
- NAV CANADA
- EUROCONTROL
- IAA
- ENAC
- ESSP
- ENAV
- LEONARDO
- SOPRA STERIA
- THALES



more details

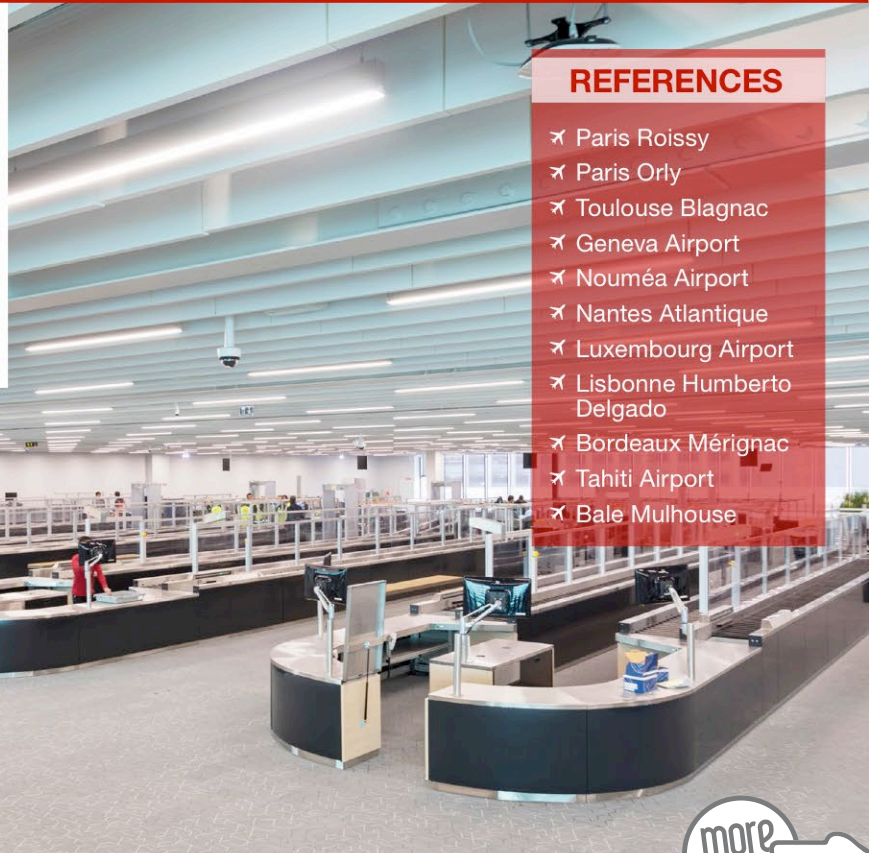
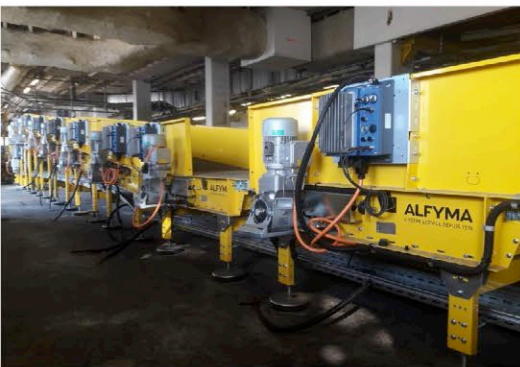


ALFYMA
WITH YOU SINCE 1974

Baggage Handling Automated System

tray return system

conveyors



REFERENCES

- ✕ Paris Roissy
- ✕ Paris Orly
- ✕ Toulouse Blagnac
- ✕ Geneva Airport
- ✕ Nouméa Airport
- ✕ Nantes Atlantique
- ✕ Luxembourg Airport
- ✕ Lisbonne Humberto Delgado
- ✕ Bordeaux Mérignac
- ✕ Tahiti Airport
- ✕ Bale Mulhouse

Alfyma can meet any airport's request, from passenger security checkpoint to baggage handling system and reclaim. And our large flexibility allows us to suit any logistic process automation.

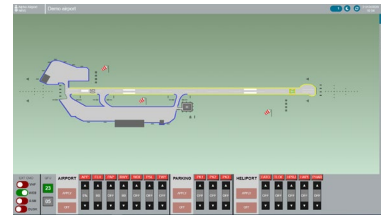


REFERENCES

- ➔ French DGAC (control tower)
- ➔ French Air Force (AGL)
- ➔ Bulgaria (AGL)
- ➔ Morocco (AGL)
- ➔ Algeria (12 helistations)
- ➔ Republic of Congo / RVA
(Terminal Equipment, AGL)
- ➔ Ethiopian Airlines (AGL, BHS)
- ➔ Seychelles (SCAA Security systems)
- ➔ Ivory Coast (Airport systems)
- ➔ Senegal (AGL)

ALPHA AIRPORT : Landside and Airside solutions

From airport equipment assembly to airfield lighting system design and installation, ALPHA-AIRPORT is a leading integrator in the airport system industry.





Airfield Lighting

Baggage Handling

Fire System

Access Control

BMS

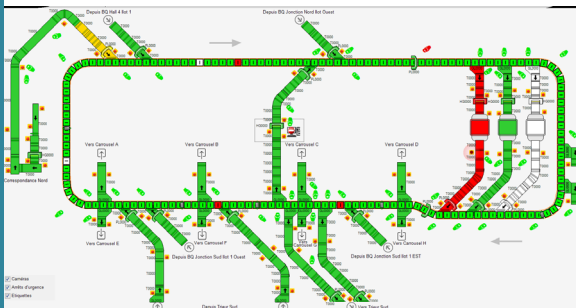
ALPHA-CIM

Leader in automation systems integration and industrial IT, ALPHA-CIM offers innovative and turnkey solutions in software, SCADA, Automation, network, cybersecurity for Airports. Our expertise covers audits, consultancy, design, development, MOC and training.

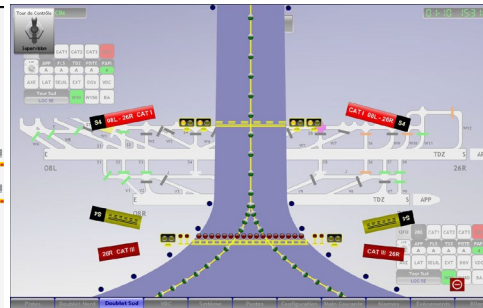
ALPHA-CIM solutions are based on standards, is open to interfaces, user friendly, expandable, multi-brands to propose the most efficient, cost effective and reliable results.

REFERENCES

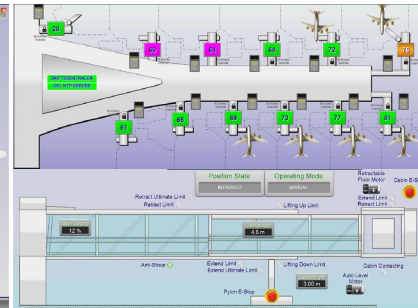
- Paris Charles de Gaulle
- Paris Orly
- Oslo International airport
- Mohammed V Int airport (Casablanca)
- Orange military air-base
- Marseille Provence airport
- Nice Côte d'Azur airport



BAGGAGE HANDLING



AIRFIELD LIGHTING



PASSENGER BRIDGE



ALSTEF GROUP

specializes in designing, building, and commissioning complete baggage handling systems, including innovative solutions with high-speed AGV and predictive maintenance, as well as air cargo warehousing automation

REFERENCES

- Mexico - Felipe Ángeles Intel Airport – Mexico
- New Zealand - Auckland Airport
- France - Charles de Gaulle Airport - Paris
- Canada - Pierre Elliot Trudeau – Montreal
- France - Nice Côte d'Azur Airport
- Croatia - Franjo Tudman Airport – Zagreb
- France - Saint Exupery Airport – Lyon
- Mauritius – Sir Seewoogasur Ramgoolam
- Madagascar – Antananarivo – Ivato

baggage handling systems

aircargohandling

maintenance and operation



REFERENCES

- Bacau (Romania) airport
- Beyrouth (Lebanon) airport
- Bharein airport
- Bruxelles (Belgium) airport
- Dubai (United Arab Emirates) airport
- Carasco (Uruguay) airport
- Cotonou (Benin) airport
- Luxembourg airport
- Montevideo (Uruguay) airport
- Moscou (Russia) airport
- Niamey (Niger) airport
- Oslo (Norway) airport
- Tokyo Narita (Japan) airport
- Yaoundé (Cameroon) airport

Pc Vue France

is a global player in monitoring software for the Power, industrial processes, utilities and infrastructure sectors



Our 5 business activities are complementary and enable you to combine safety and performance at every stage of your projects.

Inspection

We check the reliability of your facilities, equipment, structures, infrastructures and buildings to keep them compliant during commissioning as well as operation.

Training

We are the leader in Risk Management and Safety training. Our unique model using trainer-inspectors enables 350,000 people each year to take part in training that culminates in certification, a real credential for their professional futures.

Tests & Measurements

We carry out testing of all types using simulators that reproduce actual stresses. We also take air, water and soil samples and measurements to monitor their quality and better manage your risks and impact on the environment.

Consulting and Technical Support

We help you improve the health and safety of people and property, preserve the environment and optimise the performance of your installations and equipment.

Certification & Labelling

We certify your systems dedicated to management, skills, products or services. We also define labels in line with a strict reference framework.



REFERENCES

- ADP
- Marseille Airport
- Lyon Airport
- Alsteeff
- EMBROSS
- Aviapartner
- Menzies
- Cameroon Airport
- AENA
- Ivory Coast Airport



Top 1%
of architecture &
engineering companies

Artelia is a 9 000 staff multinational, multidisciplinary consultancy, engineering and project management group specializing in the construction, infrastructure and industry sectors.

« **Our Missions** : Design, Project Management, Construction Supervision, Independant Engineer, Climate Change Impact Assesment, Fuel Supply Systems, Automatic People Movers »

REFERENCES

- Roland Garros airport
- Paris Airports ORY+ CDG
- Marseille Provence Airport
- Nice Airport
- Copenhagen Airport :
50 years of PARTNERSHIP
- EuroAirport Basel-Mulhouse-Freiburg



OCEM Airfield / Augier Energy

We are partners to well over 1,500 airports on all continents with a clear focus to make the airfield safer, more efficient and more sustainable with its advanced airfield ground lighting and energy solutions.

REFERENCES

- Paris airports CDG ORY LBG
- Honk Kong International HKIA
- Kuala Lumpur airport KLIA
- Guangzhou airport CAN
- Fujairah airport FJR
- Valencia airport VLC
- London City Airport
- Roma airport FCO
- Madrid airport MAD
- Barcelona airport BCN





REFERENCES

- 10 years +
- 800+ medical installations worldwide
- 350+ projects completed



BA Healthcare

A recognized expert in mobile robotics, complex device automation, as well as mechatronics design and numerical simulations.



BODET TIME

A long-established name in time synchronisation and time display for the transport sector, including airports and ATC

REFERENCES

- Adolfo Suárez Madrid–Barajas Airport, Spain
- Lyon-Saint-Exupéry Airport, France
- Milan Malpensa Airport, Italy
- Lisbon Airport, Portugal
- Budapest Ferenc Liszt International Airport, Hungary
- Warsaw Chopin Airport, Poland
- Sofia Airport, Bulgaria
- Cairo International Airport, Egypt
- Ankara Esenboga International Airport, Turkey
- Algiers International Airport, Algeria
- New Bangkok International Airport, Thailand
- Soekarno-Hatta International Airport, Jakarta Indonesia

Bodet
Time



more
details



AIRPORTS

#Airport Construction

#Airport PPP

#Airport Planning

#Airport Finance



BOUYGUES CONSTRUCTION AIRPORTS

Bouygues Construction Airports is an experienced, market-leading airport developer that works on complex airport projects in challenging financial, environmental, geographical and regulatory environments.

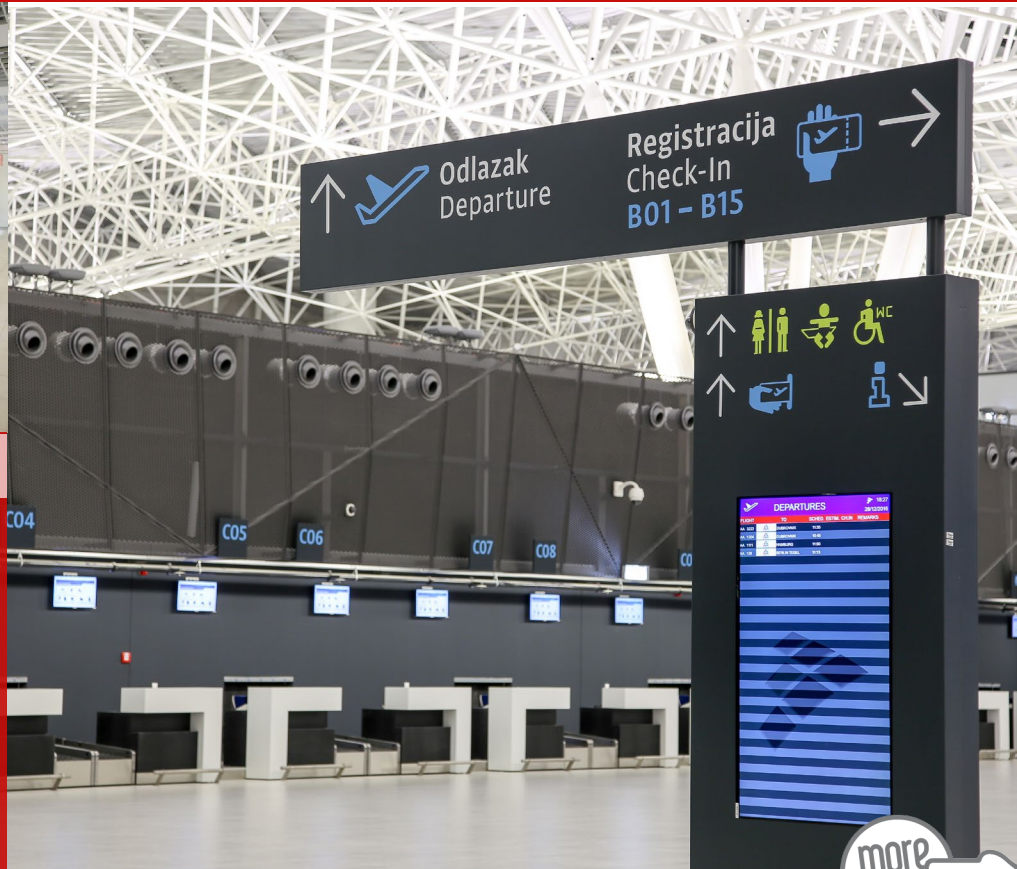
“Developing the airport of tomorrow together”

MAIN REFERENCES

- Antananarivo Airport (Madagascar)
- Iqaluit Airport (Canada)
- Larnaca Airport (Cyprus)
- Nosy be Airport (Madagascar)
- Paphos Airport (Cyprus)
- Zagreb Airport (Croatia)

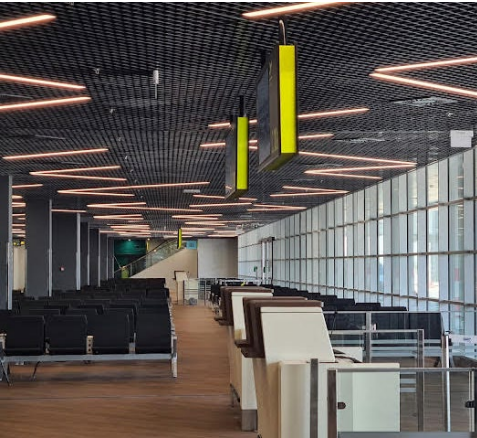


CC-CONSULTING provides engineering and assistance for Terminal equipments and supplies global solutions, from traveler departure to arrival and from aircraft take-off to landing.



REFERENCES

- ✈️ Roissy CDG Airport - France
- ✈️ Cairo Airport - Egypt
- ✈️ Bamako Airport - Mali
- ✈️ Dushanbe Airport - Tajikistan
- ✈️ Tripoli Airport - Libya
- ✈️ Zagreb Airport - Croatia
- ✈️ Belgrade Airport - Serbia
- ✈️ Yaounde Airport - Cameroun

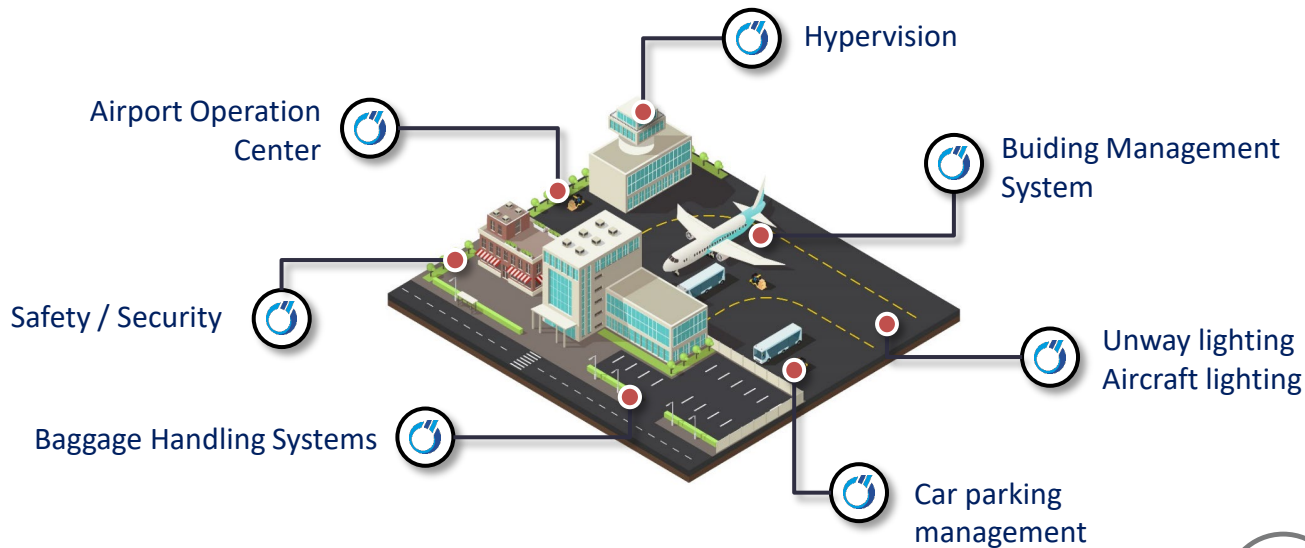




CODRA provides a real-time data platform to address the challenges of the smart-airports. Our technologies is the stepping stone to the next level of your innovation projects by being the backbone of your industrial information system.

REFERENCES

- Orly Airport
- Roissy Airport
- Lille Airport
- Toulouse Airport
- EuroAirport
- Gatwick Airport
- Dublin Airport
- Birmingham Airport
- Heathrow Airport
- Manchester Airport & DGAC

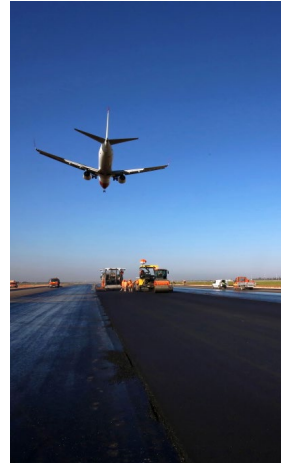


COLAS | Aviation & Defense

Colas puts its know-how into action for your airport or air-base infrastructure projects. From refurbishing airfield pavement to more complex design and build, your projects can all benefit from the strength of the Colas Group's longstanding expertise, backed by a global network.

LAST REFERENCES

- AGA Agadir
- BKK Bangkok
- CYS Cheyenne
- LGW Gatwick
- LUX Luxembourg
- TNR Ivato
- LAX Los Angeles
- MSS Massena
- NOS Nosy-Be
- ORY Orly
- CDG Roissy
- OST Oostende
- ORK Cork
- YFB Iqaluit
- YXY Whitehorse
- TTU Tétouan





Construction Specialties®

Building materials

JointCovers

Louvers

SunControls

WallProtection

HygienicWalls



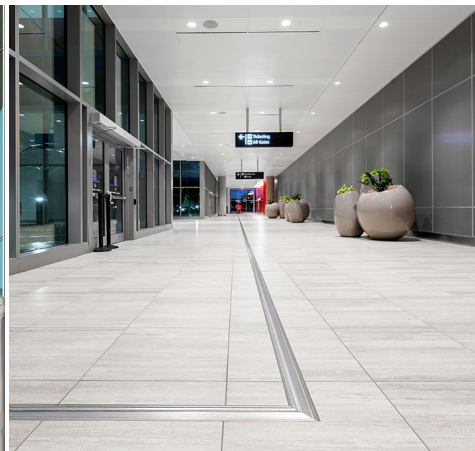
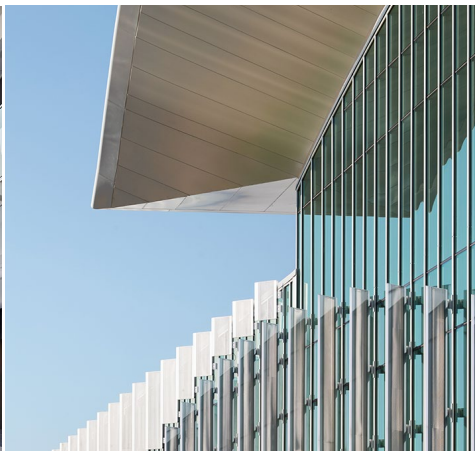
Construction Specialties France

With years of experience serving the aviation and transportation market, we understand the unique challenges facing architects, facility owners and their construction partners looking to build the next great destination.

REFERENCES

- Roissy Charles de Gaulle
- Orly
- Larnaka International Airport
- Moscow-Domodedovo
- Bahreïn International Airport
- JFK International Airport
- Washington DC
- CDIA Terminal A

View more projects :
https://bit.ly/cs_aviation




North American Operations : www.c-sgroup.com | European Operations : www.c-sgroup.eu



DAIA

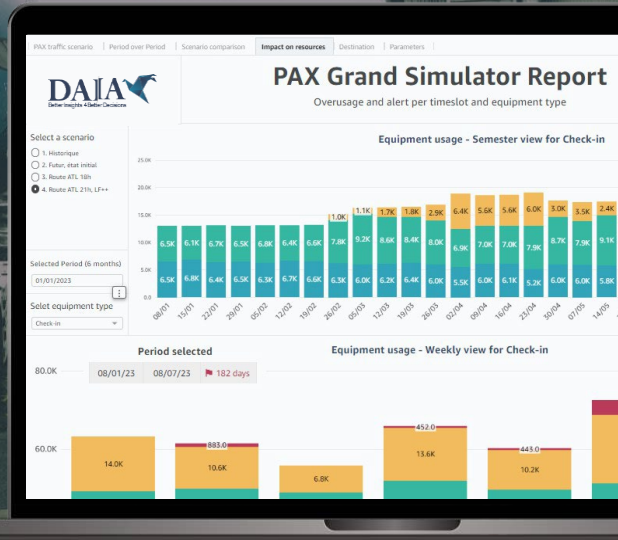
Improve Customer Experience

DAIA provides IT solutions for helping the airports to solve tomorrow's challenges.

PGS  allows you to predict the moment when your airport infrastructure will no longer be able to cope with more passengers.

Leverage your data

www.daia.tech



— PROPULSÉ PAR —



REFERENCES

→ Brest Bretagne Airport

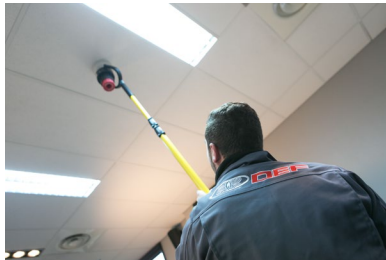


DEF

Relying on its know-how as a builder and its network of expert companies, DEF offers a complete range of fire safety system solutions and services for Airport projects, around the world.

REFERENCES

- Algiers airport (Algeria)
- CDG Airport (Paris)
- Bagdad International Airport
- Aimé Césaire International Airport (Fort de France)
- Algiers Airport Domestic Terminal
- Pochentong Airport (Phnom Penh)
- La Tontouta International Airport (Nouméa)



DEGREANE HORIZON

The Weather Sense : Turnkey projects in airport meteorology

REFERENCES

30 years

100 countries

400 airports

Wide Range of Products

STRONG RESEARCH & DEVELOPMENT POLICY

DEGREANE HORIZON focuses on Turnkey solutions based on in-house manufactured automatic weather stations and sensors



A W O S

AUTOMATED WEATHER OBSERVING SYSTEM AND WIND PROFILER FOR AERONAUTICAL APPLICATIONS



PCL1300 Wind Profiler

KNOW-HOW, QUALITY & TECHNICAL EXCELLENCE

- ✓ REAL TIME VERTICAL PROFILING OF WIND & DIRECTION
- ✓ TEMPERATURE PROFILING WITH RASS



APPLICATIONS :

- ✓ Wind Shear Detection
- ✓ Wind profiles for assimilation into Numerical Weather Prediction Systems
- ✓ Measurement campaigns for atmospheric research
- ✓ Sporting events



The Weather Sense



For more than 50 years, Egis has been working alongside aviation stakeholders delivering end to end support. Services range from strategy and design to project management and operations for airport operators, air navigation service providers, systems suppliers, aircraft manufacturers and institutions.



REFERENCES

- Hong Kong CAD – System engineering & safety lead for ANS equipment upgrade for the three-runway system project
- Groupe ADP – Project management partners for IT systems at Paris airports
- Keyes – Wide-ranging consultancy & strategy advisory
- Operations & Management – Shareholder & partner of 20 airports
- Matarat Holding – Consulting services and continual improvement support across 26 airports in Saudi Arabia



REFERENCES

- Lille airport
- Toulouse airport

EIFFAGE

Eiffage is one of Europe's leading construction and concessions companies. In 2019, Eiffage began operating the concessions for the airports in Lille and Toulouse. The airport sector allows us to strengthen our local roots in the regions where we are present, while following a low carbon strategy.



more details



Founded in Paris in 2003, **ENIA architectes** is one of the top 50 architecture and design firms in France. The office is supported by a solid and enthusiastic staff of 80 collaborators from 17 different nationalities and delivered projects across a wide range of industries varying in both and scales and building types most notably in the transport sector.

Since 2005 **ENIA architectes** actively develops an international activity with projects in Asia, Africa, South America and Europe. The firm has partnerships in Tunisia, Brazil, Japan, several west and central African countries and an indian subsidiary with 30 collaborators based in Delhi since 2015.

REFERENCES

- Lille-Lesquin, France
- Pune, India
- Ouagadougou, Burkina Faso
- Guadeloupe, France
- Carcassonne, France
- La Réunion, France
- Djermaya, Republic of Tchad
- Gassim & Al Jouf, Saudi Arabia
- Saint Kitts and Nevis
- Bâle Mulhouse, Switzerland
- Bordeaux, France
- Tahiti, French Polynesia
- Cayenne, French Guinea
- Geneva, Switzerland



#carbon management

#air quality

#noise

#research

#ESG

#environment

#sustainable

#roadmaps

Supporting major airport groups and European Institutions for more than 20 years with unique expertise in understanding environmental impacts and sustainable practices, developing realistic pathways to deliver on ambitious goals for the future.



REFERENCES

- ADP
- Vinci
- Eiffage
- Egis
- Riyadh King Khalid Intl Airport
- Narita Airport



REFERENCES

→ ATD Analytics :

- Aéroport de Montpellier Méditerranée
- ACNUSA
- SEALAR
- ENAC

→ AIR TRANSPORT DATA : Airports - Traffic flows - Airlines

- Vinci Airports
- Airports-Information
- SNCF
- DKMA

→ PAPI Calibration using Drone:

- Libournes
- Tarbes
- La Réunion
- Genève

→ AIRBUS • CGX • EGIS • INNOV'ATM • METSAFE

FRANCE AVIATION CIVILE SERVICES (FRACS)

Expertise and consultancy office of the French Civil Aviation

Airport development strategy:

- Development and optimisation of routes.
- Competitive intelligence and market knowledge.
- Detailed access to traffic and its evolution.

Airport operations – Navais calibration using a drone:

- 1 hour per PAPI unit
- Calibration by colorimetry
- No runway occupation
- Certified by STAC



CALIBRATION



GROUPE ADP

SHARING NEW HORIZONS

#Airport design

#Consulting & Engineering

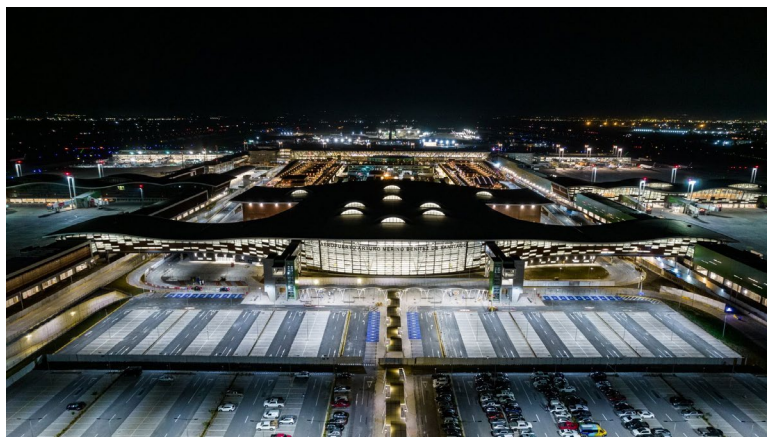
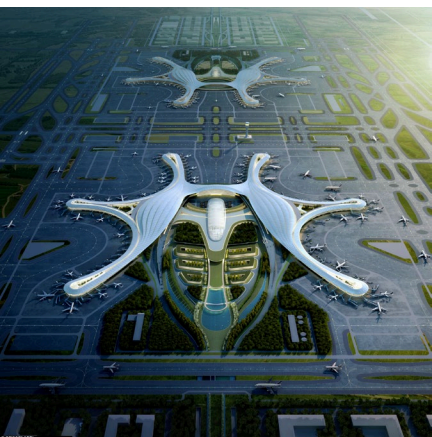
#Architecture

GROUPE ADP

Groupe ADP is a world leader in airport design, construction and operation.

REFERENCES

- Beijing-Daxing International Airport,
- Chile-Arturo Merino Benitez international airport,
- Chengdu-Tianfu International Airport



GROUPE EUROPE HANDLING

is a subsidiary of the Groupe CRIT and is specialized in airports assistance.

Its offers ground handling solutions in compliance with international airport standards.

REFERENCES

- Paris CDG airport
- Paris Orly airport
- Paris Le Bourget airport
- London Heathrow airport
- London City airport
- Dublin / Shannon airport
- Belgrade airport
- Freetown airport
- Brazzaville airport
- Pointe Noire airport
- Saudi Arabia airports





GPU

ASU

ACU

APU OFF

PCA

REFERENCES

- Airbus
- Fraport
- Munich Airport Ground Services
- Aéroports de Paris
- Nice Airport
- DNATA (Emirates)
- Swissport
- United Airlines
- UK MoD
- ETIHAD Airlines
- Saudi Ground Services
- Abu Dhabi Airport
- DHL Express



GUINAULT SA

Manufacturer of aircraft APU substitution solutions on ground :
Aircraft Ground Power / Air Conditioning / Air Start Units
and distribution (Cable retriever, Air Hose retriever)
Electric – Diesel - Battery



HUB PERFORMANCE

provides passenger terminal capacity planning and performance measurement, Baggage and cargo handling simulation and optimization, Passenger flow management.

REFERENCES

- Paris CDG 2E S3
- Paris ORLY Junction
- Lyon,
- Bordeaux Millaud
- EuroAirport
- London Heathrow Q6 T1, T2 & T3
- London Gatwick South terminal
- Athens International
- Geneva
- Liège



IDEMIA

- The world leader in **identity management** and **biometric** technologies
- Supporting **Governments** and **Airports** operators to **secure borders** and **facilitate the passenger journey**

REFERENCES

✈️ **+250 airports** use our biometrics solutions worldwide (incl. **Paris, Bogota, Los Angeles, Abu Dhabi, Changi, Delhi, Sydney...**)

✈️ **+30 Governments** secure their borders with our solutions (incl. **eu-LISA, France, USA, UAE, Singapore, Australia, Chile...**)



more details

THE EXPERT OF SELF-SERVICE SOLUTIONS

Actively engaged in the evolution of technologies, EASIER provides a comprehensive range of high-end products and services to airports and airlines, ground transportation operators and public Institutions.



REFERENCES

- ➔ **Self-service check-in kiosks**
Air New Zealand, Aéroports de Paris, Aena, Hermes Airport Ltd, Royal Air Maroc...
- ➔ **Automated Border Control**
Abu Dhabi Airport, Montréal Airport, Switzerland Airports, Aéroports de Paris (PARAFE), Tampa Airport, Entebbe Intl. Airport ...
- ➔ **Self-boarding gate**
Los Angeles Intl. Airport, Sochi Airport, Split Airport, Quito Airport...
- ➔ **Gate reader & Boarding pass / Bag tag printer**
(90% of the world's airports have EASIER equipment).

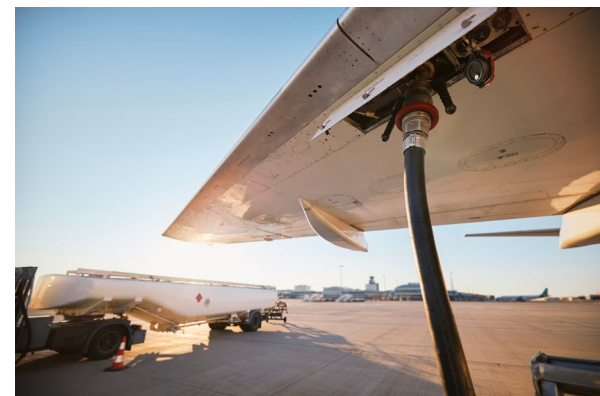




SAFE

DELIVER OPERATIONAL PERFORMANCE

Providing key airports' basics to ensure operations continuity & efficiency and maintain high levels of security, safety and customer and worker experience



REFERENCES

- REDDIG = VSAT Network ICAO / South America
AERIA = Airfield lighting, ATC, Energy of Abidjan International Airport
- ASCENA = VSC, ATIS, ATM, MET, AMHS, System Provision
ATC Simulators



SMART

BOOST DIGITAL PERFORMANCE

Supported by technology and data analytics, enhancing Airport Infrastructure's sustainability and efficiency as well as user and workforce convenience



SUSTAINABLE

OPTIMISE ENVIRONMENTAL PERFORMANCE

Supporting airport commitment to reducing carbon emission, energy and fuel consumption, as well as resources and waste generation

IN GROUPE

Trusted provider for :

- **Physical and digital travel documents :**
Passport, ID Card, Crew Member card
- **Biometric authentication of passengers :**
Face, fingerprint, Iris, Voice
- **Border control :** eGate, OneID, EES/ETIAS

REFERENCES

**Main references for eGates
& Immigration Border Control:**

- ➔ Nice Airport
- ➔ Marseille Airport
- ➔ Lyon Airport
- ➔ Bordeaux Airport
- ➔ Basel Mulhouse
- ➔ CapTown (South Africa)
- ➔ Myanmar
- ➔ French/UK sea ports
(Calais, Coquelles, Folkstone)



more
details



REFERENCES

- ➔ Geneva
- ➔ Toulouse Blagnac
- ➔ Roland Garros – La Réunion
- ➔ 7 Saudi regional airports
- ➔ Atlanta
- ➔ Phnom Penh
- ➔ Cyprus Airports



ORBITY

World leader in innovative Parking Management Systems



Cybersecurity Experts For airports



Leader in cyber security for airline industry

ORNISEC is a leading company in the field of aviation cybersecurity. Its consultants, based in France and Morocco, work with the IT and technical departments of airports and airlines to strengthen their level of resilience in terms of cybersecurity and to comply with the legal and regulatory framework for the protection of aviation infrastructure.

Security audit

Architecture audit, configuration audit, code audit, penetration testing

Consulting

Security policies, expertise, risk management, security programs

Regulatory compliance

Compliance with : LPM, RGPD, NIS Directive , ISO27001, OACI, EASA

External CISO

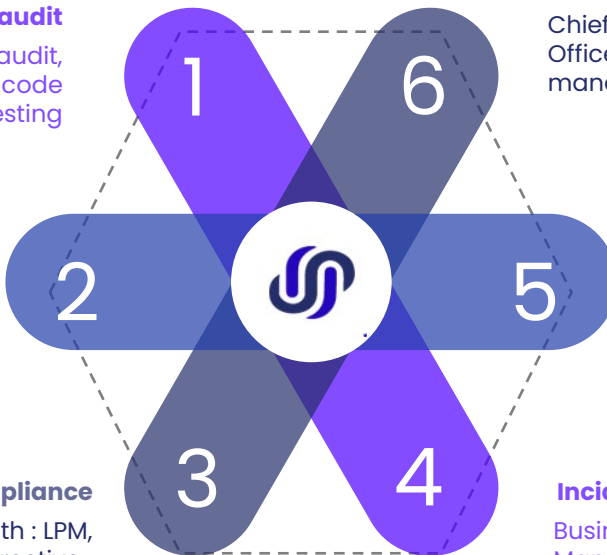
Chief Information Security Officer as a service, security management, Reporting

Training & Awareness

Phishing simulation, traingin, awareness adapted for airoports

Incident response

Business Continuity, Crisis Management



"Ornisec offers cyber expertise combined with a perfect knowledge of the airport environment." CISO AEROPORT MONTPELIER



OTIS France

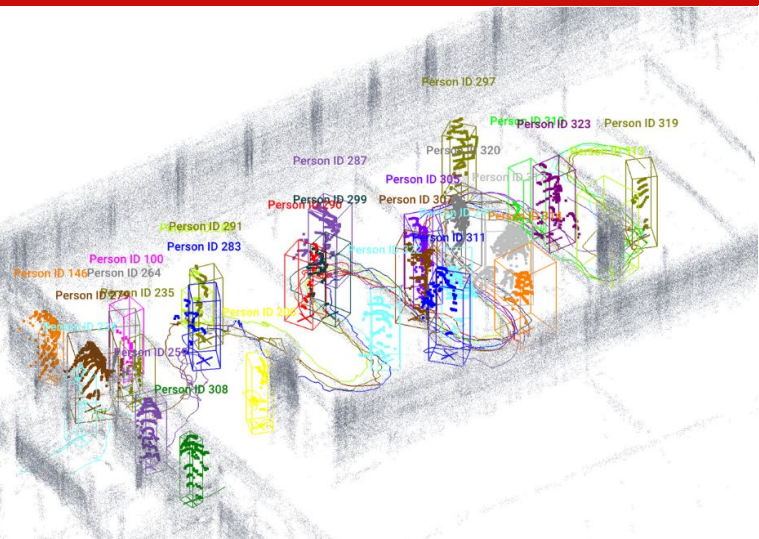
Manufacture of elevators, escalators, moving walkways
Installation, maintenance, repair, modernization.

REFERENCES

- Abu-Dhabi Airport - UAE
- Kuwait Terminal 2
- Istanbul Airport – TURKEY
- Charles de Gaulle – France
- Orly- France
- Manchester Airport - UK
- Faro Airport – Portugal
- Detroit NW Terminal - USA



more details



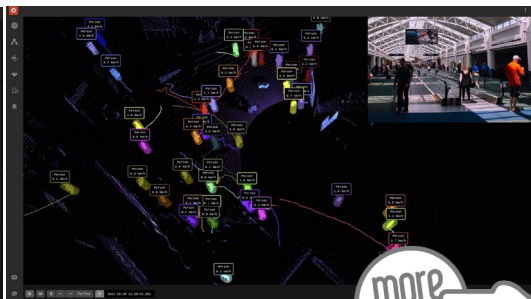
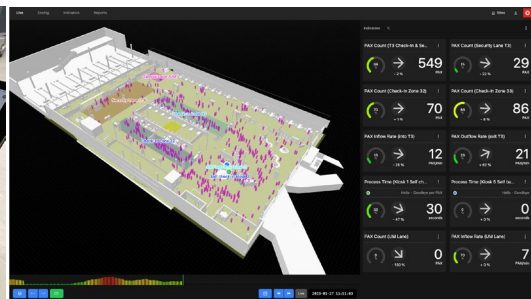
OUTSIGHT

Advanced People Flow & Crowd Management solutions at airports - LiDAR-based Software Solutions

Throughout airport terminals and at all key touchpoints from curb to gate, the software leverages the unique value of 3D LiDAR data to anonymously track passengers and monitor queues in real-time.

REFERENCES

Hundreds of customers in 5 continents use Outsight technology to monitor the flow of People and Vehicles



PIXYS

Experts in Airport Total Operations Management and Airport Operations Centers (APOC/AOCC) engineering.

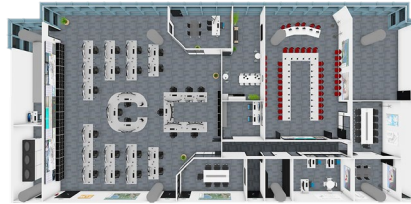
Global Airport Systems Integration with AgiWare® TOPS and Total Operations Management with AgiWare® TOMS.



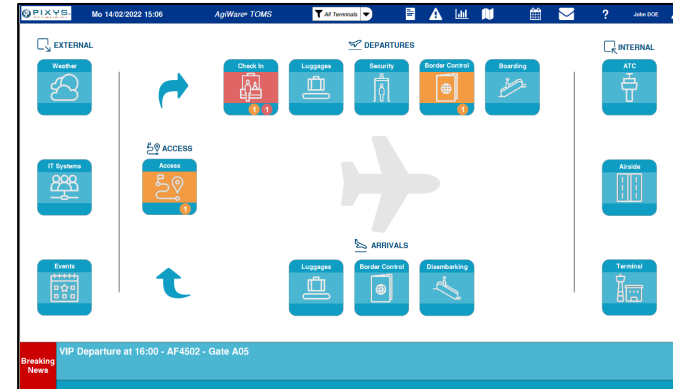
Global Airport Integration Dashboard

REFERENCES

- ✈ Nice Airport
- ✈ Geneva Airport
- ✈ Paris-Orly Airport
- ✈ Macau Airport
- ✈ Toulouse Airport
- ✈ Marseille Airport
- ✈ Lyon Airport



APOC / AOCC
Engineering



Total Operations Management

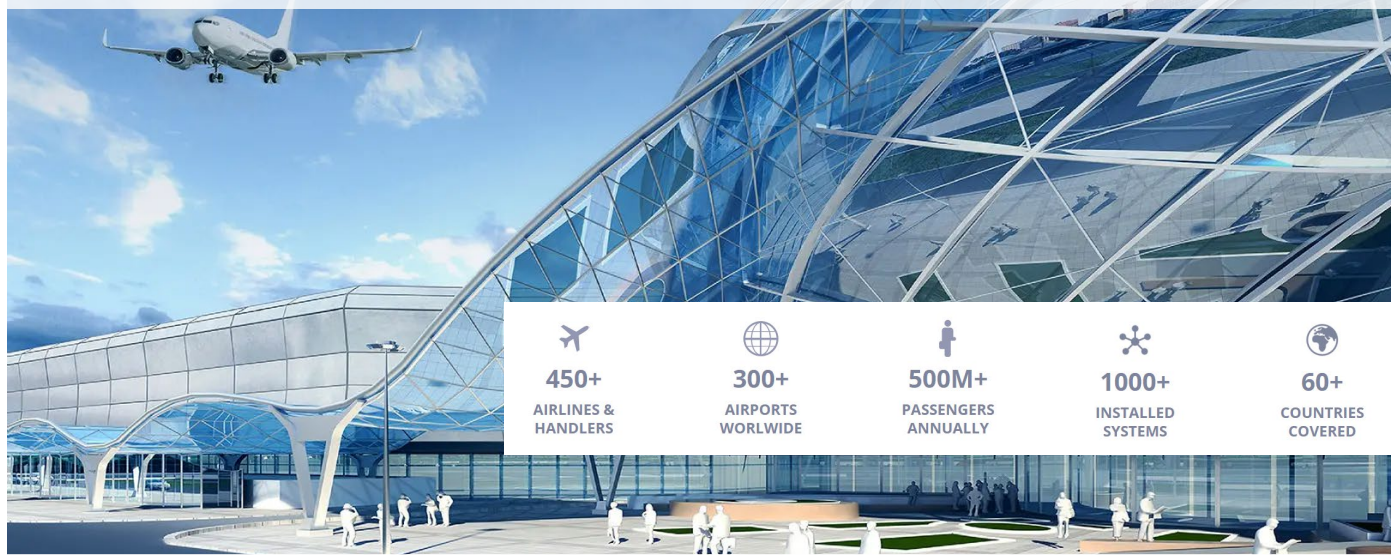
REFERENCES

- Montreal
- Paris
- Vilnius
- Roma
- Luxembourg
- Lagos
- Santo Domingo
- Mexico
- Bangkok
- Tunis
- Karachi
- Naples
- Bamako
- Kilimanjaro
- Luanda
- Mauritius
- Riga
- San Salvador

RESA develops, markets, and maintains a wide range of **integrated software solutions**

covering all airport IT needs in 60+ countries :

Passenger check-in and boarding, baggage tracking and reconciliation, passenger tracking, automatic gates, self-service kiosks and biometrics, self-bag drop, flight and resource management, invoicing, statistics, business intelligence and information broker



www.resa.aero

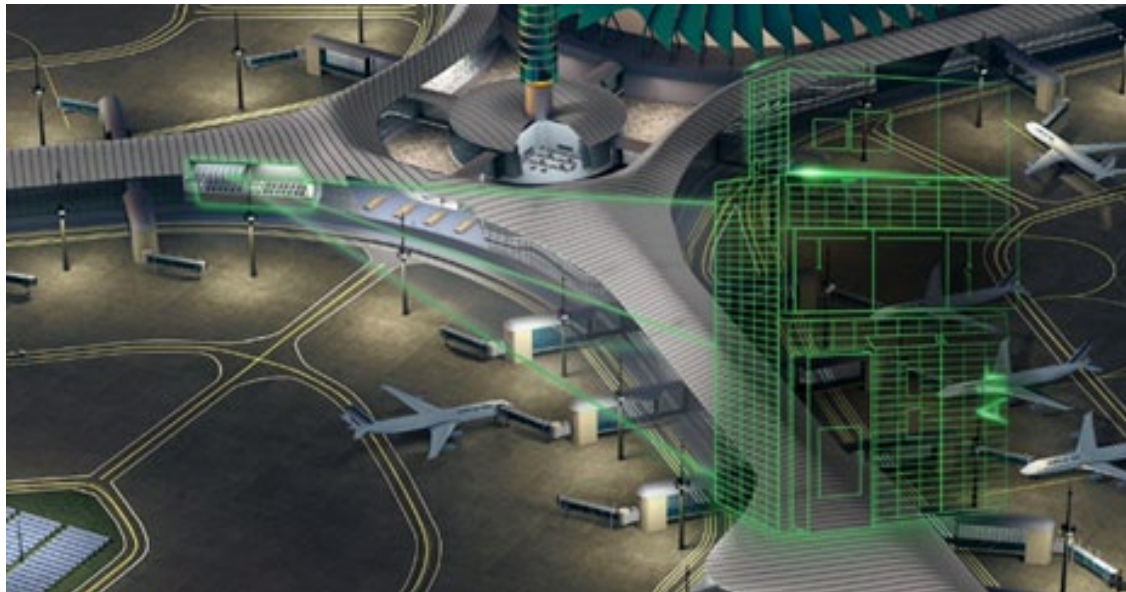


SCHNEIDER ELECTRIC

Digital transformation of energy & automation for reliable electrification, efficient operations and decarbonized airports of the future.

REFERENCES

- Changi Airport – Singapore
- Barcelone El Prat Airport
- Geneva Airport
- Calgary Airport – Canada
- JFK Terminal 1 microgrid – USA



REFERENCES

- Airport of Ouagadougou, Burkina Faso
- Airport of Tahiti, French Polynesia
- Airport of Sihanoukville, Cambodia
- 11 Airports in Brazil
- Airport of Santiago del Chile, Chile
- Airport of Tananarive, Madagascar
- Airport of Conakry, Guinea
- Airports of Marrakech, Agadir, et Tangier, Morocco
- Airport of Dubrovnik, Croatia
- Airport of Mayotte, France
- Airport of Maldives

**SETEC INTERNATIONAL**

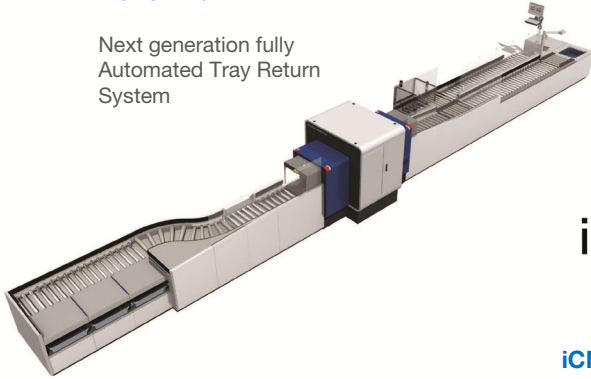
Leading player in project design, construction and management as well as client assistance and representation

SMITHS DETECTION

A global leader in threat detection and screening technologies for aviation, ports and borders, urban security and defence markets.

iLane A20

Next generation fully Automated Tray Return System



iCMORE APIDS

Automated detection of prohibited items at airport security checkpoints



Hi-Scan 6040 CTiX Model S

The leading Computed Tomography (CT) checkpoint scanner on the market



SDX 10060 XDi X-ray Diffraction

Next generation screening technology to elevate hold baggage security and efficiency



REFERENCES

- 40+ years of experience in aviation security
- 25+ years in CT technology
- 4,000+ hold-baggage solutions
- 2,000+ multi-view X-ray
- 26,000 explosive trace detection

SYSTRA

SYSTRA is a consulting and engineering company, specialist in mass transportation and mobility. Our dedicated aviation business line provides consulting & advisory support, design and project management services to airport owners, regulators, operators and investors.

Our aviation experts apply their global knowledge and airport operational experience, working with our local teams and tailoring solutions to every client.

We work worldwide with airport planners, architects and engineers to design passenger and cargo terminals, ground transport facilities, airport people mover, road networks, car parks, runways, taxiways, aprons, baggage systems and many other airport specialist facilities.

For any further enquiries please contact Mathieu CAPERAN - Commercial Director :

contactfrance@systra.com

+33 (0)6 19 38 88 91

REFERENCES

- ADP - Aéroports de Paris
- Vinci Airports – Belgrade Airport
- AMP - Aéroport de Marseille-Provence
- Aéroport de Bordeaux-Mérignac
- DGAC / STAC



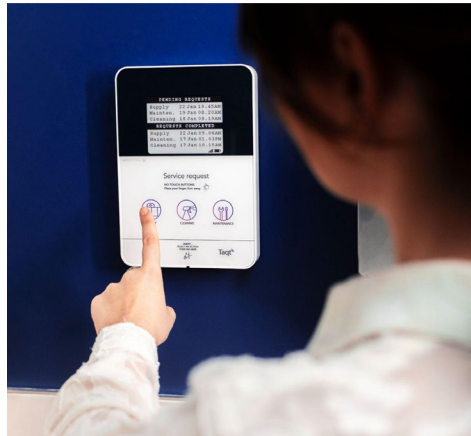
more details

TAQT

Measure passenger satisfaction and affluence with TaqtOne connected devices.
Continuously improve the quality of your cleaning services.

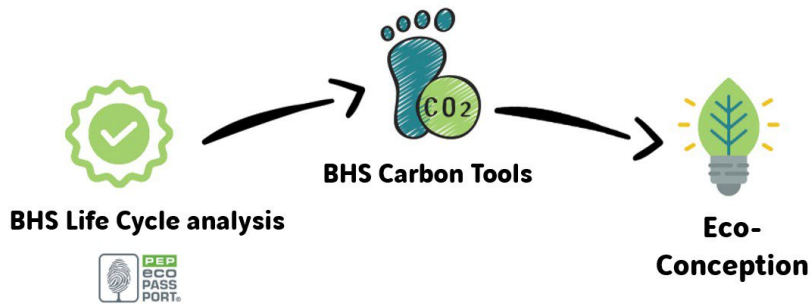
REFERENCES

- ✈ ADP Group, Lyon Airport
- ✈ Airports of Bordeaux, Nice Côte d'Azur, Paris-Beauvais, Strasbourg, Toulouse Blagnac
- ✈ Lux Airport
- ✈ Sofia airport



TG CONCEPT

From engineering to implementation, we support our customers from the conception to the installation of baggage handling and checkpoint systems by providing low carbon comprehensive solutions



REFERENCES

- Geneva Airport (Consultant)
- Toulouse Airport(Consultant)
- Nice Airport (Consultant)
- Beirut Airport (Integrator)
- Rennes Airport (Integrator)
- Lyon Airport (Integrator)
- Basel-Mulhouse Airport (Checkpoint)
- Nantes Airport (Consultant, CheckPoint)

For a smoother passenger journey
Thales is your best partner today and tomorrow.

Discover our full range of solutions & services for Airport
Operation Centres, self-service live passenger
experience, safe and quick baggage screening and
overall airport management.

REFERENCES

- ➔ More than 300 million passengers managed by Thales airport solutions per year
- ➔ Cybersecured by design

World leader in airport operational efficiency & security providing smart airport solutions with major references:

- ➔ John F. Kennedy International Airport, USA
- ➔ Lyon Saint-Exupéry Airport, France
- ➔ Changi Airport, Singapore
- ➔ Charles-de-Gaulle Int. Airport, France
- ➔ Dubai International Airport C3, United Arab Emirates
- ➔ King Shaka Int. Airport, Durban, South Africa
- ➔ Muscat International Airport and Salalah Airport, Oman
- ➔ Barajas International Airport, Madrid, Spain
- ➔ Bahrain International Airport
- ➔ Pisa International Airport, Italy
- ➔ Doha International Airport, Qatar
- ➔ Madeira Funchal Airport, Portugal.



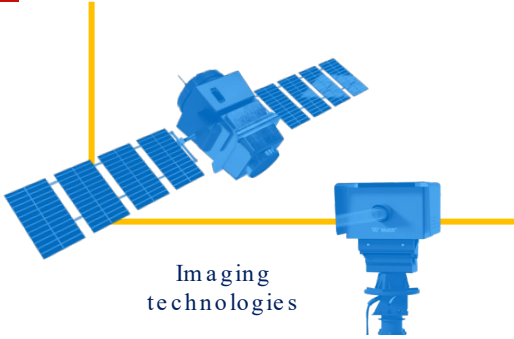


VINCI Airports

World's leading private airport operator, manages the development and operation of more than 50 airports worldwide, with a core focus on performance and environment.

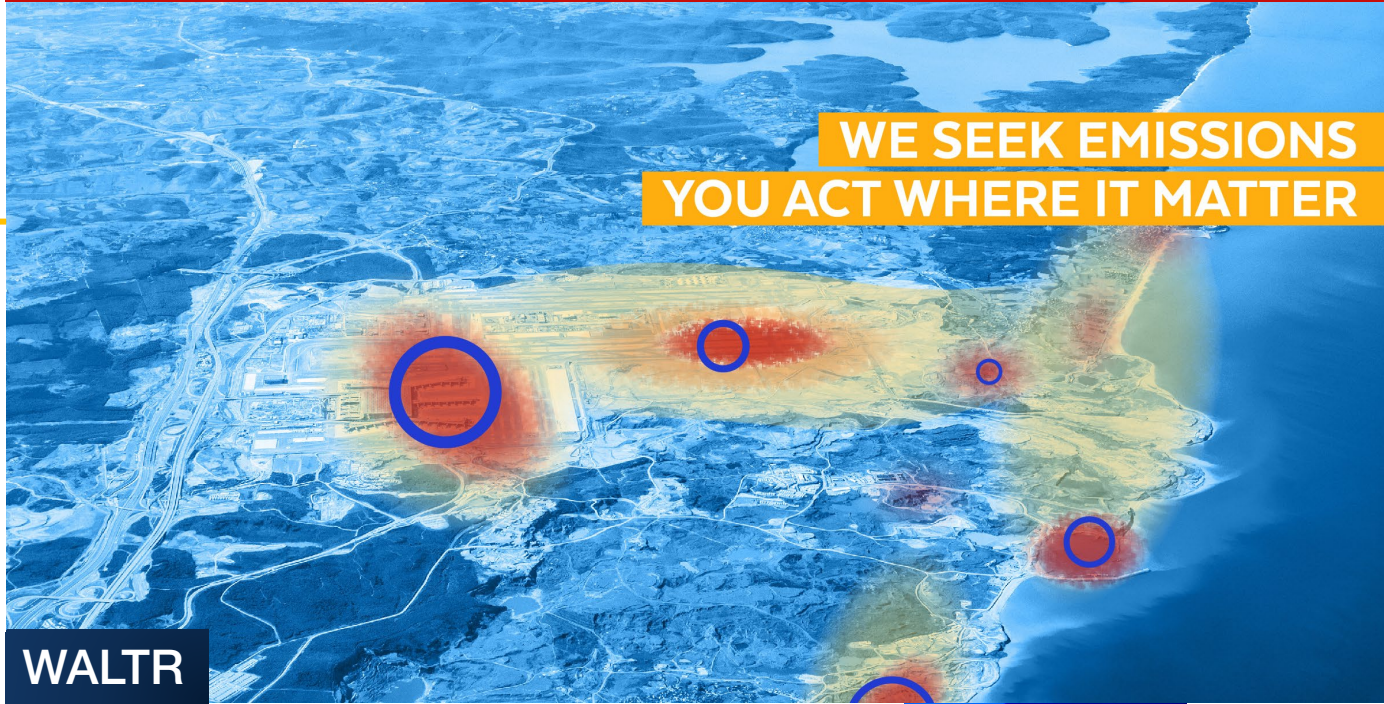
REFERENCES

- London Gatwick
- Kansai & Osaka airports
- Salvador Bahia
- Lisbon
- Lyon-Saint Exupéry



REFERENCES

- ROISSY CHARLES DE GAULLE, Paris international Airport, France
- In partnership with CNES and ESA
- 10 years in managing and developing in the fields of atmospheric chemistry and climate



WALT R

WaltR proposes tracking of planes and airports emissions using ground and satellite imagery and AI to identify actionable environmental and economical opportunities.

