

# Schwerin

## and the Lakes District

The Compass for  
your Holiday



Mecklenburg  
Vorpommern



*MV tut gut.*

[schwerin.info](http://schwerin.info)

# Must-Sees:

- ☼ *Our City Walking Tours – Page 12*
- ☼ *Schwerin Palace – Page 18*  
*Majestic landmark of the city, on an island in the Schwerin Lake*
- ☼ *Staatliches Museum Schwerin/Ludwigslust/Güstrow – Page 18*  
*Famous for its old masters and new works*
- ☼ *Mecklenburg State Theatre – Page 19*  
*Once a Royal Grand Ducal theatre, today the flagship of the state*
- ☼ *Stone Grinding Mill – Page 28*  
*Historic crafts in the old half-timbered house*
- ☼ *Cathedral – Page 6*  
*Mediaeval red-brick cathedral with a fantastic panoramic view*
- ☼ *Open-air Museum Schwerin-Mueß – Page 28*  
*Touch and experience the life of our great-grandparents*
- ☼ *Playgrounds in the inner city – Page 31*  
*Adventure for young and old*
- ☼ *Television Tower – Page 48*  
*Captivating view over the city and lakes*
- ☼ *On the Forest Experience Trail – Page 27*  
*Wander through legendary places*
- ☼ *Zoological Garden Schwerin – Page 29*  
*Daily feedings*





## Enjoy unforgettable holiday moments in Schwerin

*The Schwerin COMPASS accompanies you on your expeditions through the city and the region, leads you on the path of ducal history, shows you restaurants to your taste and offers tips on where your individual holiday souvenir can be found.*

Schwerin is always a romantic jewelry box, in this former royal seat you will find treasures as far as the eye can see. Unique architecture and valuable art treasures in combination with a magically beautiful landscape lend the city its unmistakable charm.

In Schwerin you can be carried along without hurry. Through winding old town alleyways, stroll past imposing sovereign buildings and medieval witnesses and enjoy the broad views of the palace. Within reaching distance of the romantic garden, experience fine culture in the galleries of the State Museum Schwerin with its excellent collection of Dutch paintings or in the tradition-rich Mecklenburg State Theatre. Even more variety is supplied by the stylish cafes and restaurants, small, fine shops and elegant boutiques as well as a lively, individual cultural scene. And if, after all your old town experiences, you long for idleness then the glittering lakes landscape awaits exploration by Shank's pony, by bike or on the deck of a pleasure boat.

*Welcome to Schwerin!*

# Schwerin – legendary variety



*There is hardly any other city which is surrounded by so many lakes as Schwerin. They swirl around the centre with gentle banks, along wide promenades and small harbours and radiate an almost Mediterranean flair. It is not for nothing that for hundreds of years Schwerin has been called the Florence of the north. The graceful palace on an island in the middle of Lake Schwerin is a magnificent allegory for the abundance of water and historical greatness. Whilst its golden towers are proudly mirrored in the glittering water, a sea of flowers opens up in front of the visitor in the surrounding parks and gardens.*

You can explore Schwerin easily on foot or by bike.

The picturesque historical city with its illustrious cathedral, the palace and its enchanting gardens, impressive cultural and architectural treasures and a paradisiacal lakes landscape are simply waiting to be conquered.



## *The most inexpensive cruise in the world*

*Those who have not had the pleasure of going on a cruise can make this dream come true in the heart of Schwerin. A trip on the Pfaffenteich Cruiser across the historical Pfaffenteich costs only 2 Euros! The trip covers all 4 banks of the artificial lake, dug in the Middle Ages as provision for the monks, and offers a fantastic view of the city panorama with the towering cathedral. Who needs the South Sea!*

*Landing stages: the former power station E-Werk (north-east bank), Schelfmarkt (east bank), Arsenal (south-west bank), Zum Bahnhof (west bank)*



ther along the popular shopping mile of **Mecklenburgstraße 4**. Here you can stroll through varied shops and watch the city life pass by in one of the small cafés or restaurants.

At the end of Mecklenburgstraße is the **Pfaffenteich 5**. Upon whose green promenade you can saunter like in 'days gone by'. In doing this you will pass numerous historical buildings, the former power station E-Werk is now a stage venue of the Mecklenburg State Theatre, the former residence of the royal builder Demmler as well as the distinctive **Armory 6**. Built in 1840 by the royal Privy Council builder Demmler, today it is the seat of the Ministry for the Interior for Mecklenburg West Pomerania.

After leaving the Pfaffenteich, we turn into the Schelfstadt. Did you know that the **Schelfstadt 7** has the largest ensemble of connected historical buildings in Schwerin? Marvel at the Baroque Schelfkirche at the Schelfmarkt and the old, lovingly restored half-timbered houses and characteristic streets. Today these form a cultural meeting point with ateliers, pubs and restaurants.

Let us wander back to the market square and admire the many prestigious buildings along the **Schloßstraße 8**. The Rococo building, the Government buildings and the grand State Chancellery in the neo-classical building style define the historic picture.

At the end of the street we come to the **Alter Garten Square 9**, which is mostly used now as a cultural event venue. The neo-baroque Mecklenburg State Theatre, the State Museum and Art Gallery with its famous art treasures ranging from the antique until the present, the looming Victory Column and the Old Palais makes the Alter Garten into one of the most beautiful spots in North Germany.

What about an evening at the theatre in the Mecklenburg State Theatre? The building not only shines through its princely appearance, but also stages top-class operas, ballets, plays and concerts.

## On a discovery tour through historical Schwerin

*The Ducal Seat of Schwerin can be viewed from its best side on a historical stroll through the city. Many attractions tell the story of the changeful history of the city which began with the building of a Slavic Fort, was influenced by Henry the Lion, and which found its imprint in the 19th Century through the residence of the Grand Duke of Mecklenburg.*

We start our walking tour at the **market square 1**. The spacious, cobblestoned square with its beautiful gabled houses, the city hall and the Lion Memorial is the central starting point for a discovery tour through the historical city. Just a stone's throw away are the **Schlachtermarkt 2** and the Cathedral

with its ancient half-timbered facades. The red brick **cathedral 3** with its tower of 117.5 m is the only cathedral in the state of Mecklenburg West Pomerania. Climb the 220 stone steps to the lookout platform and enjoy panoramic views over the rooftops of Schwerin and the idyllic lakes. Then we go fur-





the lower one lies directly on the water and the upper is supported by an artificial stone grotto and the beautiful orangerie. To get to the **Palace garden** 13, you need to go over the historical swing-bridge. The original garden was a baroque creation and was further developed in 1862 with new elements such as the foliage archways and later expanded in the English style around the green-house under the direction of Peter Joseph Lenné. Take some time to enjoy the beauties of this spacious area

which was largely reconstructed for the National Garden Show in 2009. Wander along the paths of Schwerin's stately times. Our walking tour through historical Schwerin ends here. If you would like, you can discover more about the Royal Seat on one of the themed walks together with one of our tour guides.

After a short detour to the **Royal Stable** 10, which was built by Georg Adolph Demmler in 1837 on a former moor, you can look forward to the highlight of your walking tour: The majestic **Schwerin Palace** 11. Once the residence of many Dukes, it sits, surrounded by gardens, on

an island in the middle of Lake Schwerin. It was first built as a Slavic fort, was rebuilt by Henry the Lion after a fire, and the renovation of the palace chapel by Duke Magnus smoothed the path for the castle as it stands today.

Its appearance today is thanks to the master builders of Schwerin Georg Adolph Demmler and Hermann Willebrand. Allow yourself to be surprised by the pomp and glitter of former times as you view the historical festival and residential rooms. At the end of your palace visit take a little time to stroll through the **Castle Gardens** 12 with their perfect mix of architecture and nature. The garden is divided into two levels, where



Schwerin City Tour  
Buskontor, Werderstraße 140  
(Pier – WEISSE FLOTTE)

19055 Schwerin  
Tel: +49 173 6184586  
info@schwerinerstadtrundfahrt.de  
www.schwerinerstadtrundfahrt.de



**G7** | On a tour in one of the red double decker buses, you can discover the beautiful State Capital with all its attractions in a relaxed manner and, if the weather's good, in the breezy cabriolet version. From the pier where the WEISSE FLOTTE lands near the palace you can use the 24 hour ticket to go through the historical old town, across the Schelfmarkt, along the Pfaffenteich, through the Feldstadt district, the Paulsstadt district and the Ostorfer Ufer district up to the Palace Garden. Tour guides will explain interesting facts and amusing stories about distinctive buildings, memorials and famous people. If you'd also like to see the silhouette of the city from on board the White Fleet, you should ask about the attractive combination ticket.

Price: Adults 11 €; children 5 €  
Duration: 1 hour  
Service: City-Hopping possible  
on 9 stops



### Tickets please!

*Tickets for the City Tour are available at the TOURIST-INFORMATION at the city hall on the market square.*

### Petermännchen City Tours

Carl-von-Linde-Straße 2  
19061 Schwerin  
Tel: +49 385 65800  
Fax: +49 385 65801  
www.petermaennchenstadtrundfahrten.de



**F6** | On an hour-long tour in small busses, you drive through the beautiful old town, past the Pfaffenteich, over the Alter Garten to the palace and along the idyllic Franzosenweg to the beach area of Zippendorf.  
Departures: April – October from the old town Market Square  
daily 11 am, 12.30 pm, 2 pm, 3.30 pm, 5 pm\* (\*from May – September) Further departures possible on request.  
Price: Adults 10 €; children 5 €  
15 people or more – a two-hour tour is available on request, including a trip on the Schwerin Inner Lake.  
Price: Adults 15 €; children 7,50 €

WEISSE FLOTTE Schwerin  
Werderstraße 140, 19055 Schwerin  
Tel: +49 385 557770  
info@weisseflotteschwerin.de  
www.weisseflotteschwerin.de



**G7** | A boat tour on the beautiful Lake Schwerin is an absolute must for every visitor to Schwerin. The ships set daily

(1. April – 31. October) from 10am on various 1.5h trips from the pier directly next to Schwerin palace. All ships are air-conditioned, have large upper decks and offer snacks and drinks on board. Insider tip: The WEISSE FLOTTE also offers 2.5 hours sunset trips every Saturday from June to August and, additionally, every Wednesday in August.



www.flossurlaub-schwerin.de



## Walking Tours

### Daily Walking Tour

An informative walking tour covering the most important attractions.

*Daily 11 am | Duration: About 1.5 hours  
Price: 5.50 € per person*

### Historical City Tour

A foray along the paths of more than a thousand years of uninterrupted state-ly tradition. Schwerin on its way to The World Heritage List.

*May to September | every 1st and 3rd Saturday | 6pm | Duration: About 1.5 hours  
Price: 5.50 € per person*

### I hold my lantern high ...

Walking tour with the night watchman through the historical old town

*April to October | Friday and Saturday 8.30 pm | November to March | Friday 6 pm | Duration: About 1.5 hours  
Price: 8 € per person*

### A peek behind the scenes

Discovery tour through the courtyards of the Schwerin Schelfstadt district

*May to September | every 2nd and 4th Saturday | 3.30 pm | Duration: About 1.5 hours  
Price: 8 € per person*

Start for all guided tours: TOURIST-INFORMATION – Am Markt 14/ Rathaus  
Children's discount: 6 – 16 years 2.00 €

Would you like to get to know Schwerin in a very unusual way? Discover our unique guided tours, e.g. the 'Mountain Tour' through Schwerin or the 'Easter Bunny Tour' at Christmas at [schwerin.com/guidedtours](http://schwerin.com/guidedtours).



## Special Tour of the Schwerin Palace From Cellar to Dome

*Meeting point: Entrance to the Palace Museum (Garden portal)  
Registration: in the TOURIST-INFORMATION, ID card necessary,  
limited participant number, from April – November Sat /Sun 2pm; in December  
Sun 2pm, price per person: 12 €; children 6 –16 years 10 €*

## Go on a treasure hunt!

*Geocaching in Schwerin – equipped with a GPS, go on a modern treasure hunt through town and country. On your way past attractions and natural beauty spots, it is your job to solve riddles at various stopping points. A small treasure awaits you at the finish.*

### Pathfinder – A digital journey through the history of Schwerin.

The urban discovery tour informs you, in an entertaining way, about the city and cultural history of Schwerin and leads you away from the classic tourist paths.

### Quiz Adventure – Great fun for both children and parents

This family tour offers exciting sight-seeing for the little ones. For a change of pace, there are in-between stops at playgrounds. The tasks are set with children in mind.

### Natural Lakes – perfect for walkers or bike riders

Your route leads you through parks and gardens and the Lakes District around Schwerin. In many places you can discover more about history and native flora and fauna.

You can go at your own pace and, of course, leave the treasure trail for e.g. a visit to a restaurant or a wander through Schwerin's shops. Using the GPS is simple and our team at the TOURIST-INFORMATION will give you all the instructions you'll need. You will receive a geocaching starter pack from us, including a small handbook, in which you can read all the necessary information and find one or two tips for your treasure hunt.

*Booking: TOURIST-INFORMATION  
Tel: +49 385 5925212  
[www.schwerin.com/geocaching](http://www.schwerin.com/geocaching)*







## The Schwerin Ticket – more than just a bus ticket

The discovery pass with many advantages:

Travel on any bus or tram in the entire Schwerin network and discounts for more than 30 attractions and fares.

*Schwerin from a bird's-eye view:*  
Tower climb in Schwerin Cathedral,  
Schwerin Television Tower

*Museum and cultural highlights of the city:* Schwerin Palace Museum, Staatliches Museum Schwerin/Ludwigslust/Güstrow, Open-Air Museum for Folklore Schwerin-Mueß, Zoological Garden Schwerin, Schwerin Stone Grinding Mill, Geological Museum and Natural Stone Gallery



Raben Steinfeld, Nature Protection Station Zippendorf, Pinball Museum, Family Museum "Dat oll Hus"(That Old House), Miniature Park "Lütt Schwerin" (Little Schwerin), Fire Brigade Museum, Mecklenburg Forest Glass Museum, Mecklenburg Railway and Technical Museum, Planetarium and Observatory

*City Tours:*

Petermännchen City Tour, Panorama Bus, City Tour with the Double-Decker



Cabriolet Bus, City Tour with Bike Rickshaw

*Guided Tours:* Guided Walking Tour, Guided Tours in the evening with the night watchman, Historical Guided Tour, Walking Tour around the Schwerin Palace and through the gardens, Walking Tour around Wiligrad Castle and guided tour through the nature park

*Discover the city from the water:*

With the fishermen on Lake Schwerin, with the Pfaffenteich ferry

*Active in Schwerin:* Geocaching on three different routes, Schwerin Climbing Forest, Boat Hire on outer Lake Schwerin in Seehof, Bike Hire in Hohen Viecheln



### Schwerin-Ticket

The Schwerin Ticket as well as further information can be found here:

#### TOURIST-INFORMATION

In the Rathaus /Am Markt 14, 19055 Schwerin

Tel: +49 385 5925212, [info@schwerin.info](mailto:info@schwerin.info), [www.schwerin.com](http://www.schwerin.com)

Opening times:

Mon – Fri 9am – 6pm

Sat/Sun/Public holidays 10am – 4pm

Your Schwerin Ticket is available in two categories:

1 Day Ticket: Adults from 5.50 €; Children\* from 3.50 €

2 Day Ticket: Adults from 8.00 €; Children\* from 4.50 €

\* until end of 14th year

# Culture in an unusual way



*When masterpieces of past epochs meet fresh modern art, classical performances follow modern concerts, famous authors tell new stories and age-old fairy tales, the Culture and Garden Summer has begun in Schwerin. The whole year through you can make enthralling discoveries in the numerous museums, on stage and in the atmospheric squares.*

Practical culture in Schwerin means when an enticing tango is heard under the starry sky and colourful lighting installations glitter on the lakes in the inner city, when fabulous creatures wander through the palace gardens or excited actors raise the roof in pubs on the crazy theatre evenings.

In the meantime, art and music festivals, select concert series and historical markets ensure that it is never boring in the former royal city. Illustrious highlights in the cultural year are the five-day long Art Film Festival in May, the summer open air

festival Schlossfestspiele Schwerin by the Mecklenburg State Theatre, the Literature Days in Autumn as well as the Christmas Markets as a glittering end to the year. Further information about the events at: [www.schwerin.com/events](http://www.schwerin.com/events)

## *A special tip!*

*The theatre programme pub "Werk 3" in Friedrichstraße 11 is a popular meeting point for residents and visitors to the former Royal Seat interested in culture. Theatre evenings, concerts, readings and exhibitions of painting and photography are listed on the programme. Look forward to an amusing, pensive, sometimes oblique, often musical and always relaxed evening. Tickets for the events in Werk 3 are available at the TOURIST-INFORMATION, Tel: +49 385 5925215. More information at [www.klangwert.net](http://www.klangwert.net)*

Staatliches Museum  
Schwerin/Ludwigslust/Güstrow  
Gallery of Old & New Masters  
Alter Garten 3, 19055 Schwerin  
Tel: +49 385 59580  
www.museum-schwerin.com



**G7** | The Gallery of Old & New Masters founded in 1882 is known for its top-class Dutch paintings of the 17th and 18th Centuries, works by Ernst Barlach and the Schwerin collection of Marcel Duchamp. Since summer 2016 modern art has finally found its place: Works by Lovis Corinth, Max Liebermann and Marcel Duchamp from the beginning of the 20th century lead the way to contemporary art with works by Günther Uecker among others. A wide ranging series of special exhibitions enriches the Gallery further.

Opening hours:  
15.04. – 14.10. Tue – Sun 11am – 6pm  
15.10. – 14.04. Tue – Sun 11am – 5pm

Schwerin Palace  
Lennéstraße 1, 19053 Schwerin  
Tel: +49 385 5252920  
www.museum-schwerin.com



**H7** | The Schwerin Palace is one of the most important architectural creations in the history of Europe. The splendidly maintained festival and residential rooms are furnished, even today, with rich sculptural and painted decoration as well as artistic inlaid flooring. You can view valuable portraits, sculptures and exquisite hand-craft including furniture and porcelain over three floors. Especially impressive are the magnificent throne room and the ancestors gallery adorned with ducal portraits.

Opening hours:  
15.4. – 14.10. Tue – Sun 10 am – 6 pm  
15.10. – 14.4. Tue – Sun 10 am – 5 pm

Kulturforum  
Schleswig-Holstein-Haus  
Puschkinstraße 12, 19055 Schwerin  
Tel: +49 385 5555 27  
www.schleswig-holstein-haus.de



**D7** | The renowned municipal Culture Forum “Schleswig-Holstein-Haus” welcomes thousands of guests yearly. Besides constantly alternating art exhibitions with the focal point of photography, concerts, readings, lectures and discussion forums are offered. In the historical shed in the courtyard, a printing workshop invites you to experience creative printing techniques. The beautiful garden lends a unique atmosphere to concerts and celebrations. The garden salon and the garden itself are a popular venue for weddings.

Mecklenburg State Theatre  
Alter Garten 2, 19055 Schwerin  
Tel: +49 385 5300-123  
www.mecklenburgisches-staatstheater.de



**F7** | The Mecklenburg State Theatre houses Germany's third-oldest orchestra and is one of 15 German theatres on the European Route of Historic Theatres. Once a Grand Ducal theatre, it is a cultural beacon in Northeastern Germany. Plays, operas, concerts, ballets and the Fritz-Reuter-company's plays in Low German offer premium entertainment. The highlight of each summer is the open-air festival SCHLOSSFESTSPIELE SCHWERIN which attracts about 30.000 visitors. Programme and tickets:  
Tel: +49 385 5300-123  
www.mecklenburgisches-staatstheater.de

E-Werk (former power station)  
Spieltordamm 1, 19055 Schwerin  
Tel: +49 385 5300-123  
www.mecklenburgisches-staatstheater.de



**B6** | Located on the north bank of the “Pfaffenteich”, the second Schwerin venue of the Mecklenburg State Theatre produces all categories of the performing arts for the small stage (99 seats), including children's and youth theatre. Visitors particularly appreciate the proximity to the actors and the special atmosphere of the former city power plant. Upstairs, innovative performing arts experiments are shown in the new “E-Werk-Studio” space.

Programme and tickets:  
Tel: +49 385 5300-123  
www.mecklenburgisches-staatstheater.de



**“DER SPEICHER”**  
*Art in Schwerin is multi-faceted, lively and entertaining. In the socio-cultural centre “DER SPEICHER” in Schwerin concerts, readings, cabarets and theatre are performed.*  
Information at:  
[www.speicher.schwerin.de](http://www.speicher.schwerin.de)

# Event highlights in Schwerin

Surrounded by gorgeous backdrops, you can experience a varied cultural programme in the many museums, stages in the city or under the open sky the whole year through. Enjoy first-class music, unusual productions and impressive art treasures.



*FrühjahrsErwachen*  
End of April | Melodic start to the season

*FILMKUNSTFEST MV*  
Beginning of May | Filmpalast Capitol  
Movies, shorts and documentary films

*Schweriner Nachtlauf*  
Middle of May | Pfaffenteich

*Schweriner Hafenfest*  
Middle/End of May | Platz am Beutel

*Kunst Offen*  
Pentecost Weekend  
Mecklenburg West Pomerania



*Historisches Schlossfest*  
Middle of June | Schwerin Castle  
Celebratory time travel through the changes in history of the Schwerin Palace. A celebration of life in the royal court until the present

*Festspiele MV*  
June till September  
Various venues | [www.festspiele-mv.de](http://www.festspiele-mv.de)



*Internationaler Schlosstriathlon*  
End of June | Bertha-Klingberg-Platz  
Sporting Events

*Schweriner Fünf-Seen-Lauf*  
Beginning of July | Schweriner Seen  
Sporting event

*Pottery Market "Ton und Töne"*  
Beginning of July  
Old Town Marketplace

*GourmetGarten*  
Middle of July | Palace Garden  
A culinary discovery tour around the Palace Garden Pavilion



*Insel- und Strandfest*  
Middle of July  
Kaninchenwerder/Zippendorfer Beach



*SCHLOSSFESTSPIELE SCHWERIN*  
End of June till beginning of August  
Alter Garten  
The Mecklenburg State Theatre presents first-class operas and musicals under the starry sky with a different play each year



*SommerMärchen* | End of August  
Platz an der Siegestsäule  
Varied historic market place in front of the beautiful backdrop of the Schwerin Palace



*Schweriner Drachenbootfestival*  
End of August | Pfaffenteich  
One of the longest-standing traditions and the largest dragon boat event in Europe



*Winzerfest*  
End of August/Beginning of September  
Old Town Marketplace

*Altstadtfest*  
Beginning of September  
Pfaffenteich

*WINDROS Folk Festival*  
Beginning of September  
Open Air Museum for Folklore Schwerin-Mueß | best European musicians of folk music

*A-Cappella-Festival*  
Middle of September (only in 2018)  
Schleswig-Holstein-Haus

*Jedermann Radrennen*  
End of September  
Around Lake Schwerin  
Sporting event

*Tüffelwochen on the Lewitz*  
October | Lewitz

*Literaturtage*  
October | Schwerin inner city  
Authors present their new releases to the literature-interested public in readings and discussion groups

*Schweriner Kulturnacht*  
End of October  
Museums, galleries and ateliers exciting encounters with artists and their works

Further Events at: [www.schwerin.com/events](http://www.schwerin.com/events)



*Schweriner Weihnachtsmarkt*  
*"The Star of the North"*  
 End of November till end of December  
 Inner city | Radiant half-timbered houses  
 lovingly decorated shop windows and  
 adorned old town alleyways

*Martensmarkt*

*Beginning of November* | Old Town  
 Marketplace | The sound of carriage  
 wheels announces the arrival of the  
 Martin's Man from Lübeck. All around is  
 a three-day Mediaeval Spectacular



*Wintersonnenwerke*  
 Middle of December | Open Air Museum  
 for Folklore Schwerin-Mueß | Handicrafts  
 market to see, hear, feel and taste: A festi-  
 val for the senses at the winter solstice



Further Events at: [www.schwerin.com/events](http://www.schwerin.com/events)

# Schwerin.


*Magical moments.*

Short trips, vouchers  
 and more at:  
**[schwerin.com](http://schwerin.com)**



*S* Sport- und Kongresshalle  
 Wittenburger Straße 118  
 19059 Schwerin  
 Tel: +49 385 761900  
[www.stadthalle-schwerin.de](http://www.stadthalle-schwerin.de)



 In the centre of the city,  
 the Sport and Congress Hall offers an op-  
 timal location for events of all sorts. The  
 multi-functional hall constantly changes  
 its face to suit each event but holds onto  
 its charm and character. A nation-wide  
 ticket service can also be found here.

*F* Freilichtbühne  
 Johannes-Stelling-Straße 10  
 19053 Schwerin  
 Tel: +49 385 761900  
[www.stadthalle-schwerin.de](http://www.stadthalle-schwerin.de)



Nestled in the picturesque Palace Gar-  
 den, the Open Air Stage offers a unique  
 backdrop during the summer months as  
 a venue for all sorts of open air events in  
 the State Capital.

## Magical Moments

*With its absolutely lovable way and vivacious culture, the small State Capital manages, with ease, to enchant visitors in every season. Maybe it's the charming Old Town, in which the fairy-tale palace thrones on its own island, the cultural treasure chest or the glittering lakes.... but surely it is the magical moments in which one wishes that time would stand still for a moment. Whether imposing opera music under the starry sky, lively sailing trips or sparkling children's eyes when they have just spent their first night in the treehouse in the middle of the zoological garden. Spend your holiday in Schwerin and be enchanted.*

**Included:**

- 2 overnight stays incl. breakfast
- Old Town Walking Tour
- Guided tour of the fairy tale palace
- Boat tour on the lake with the WEISSE FLOTTE Schwerin
- Coffee time in a traditional pastry shop cafe
- Evening meal in historical atmosphere
- Personal pocket guidebook

Information and booking:  
[www.schwerin.com/traveldeals](http://www.schwerin.com/traveldeals),  
 Tel.: +49 385 5925271

**Price per person  
 from 146 €**

## Experience everything in Schwerin

*So that the treasures of Schwerin are not hidden from anyone, Schwerin aims to be barrier free. On this page we have summarised the cultural highlights of the city in regard to their barrier free access.*

You would like to experience a holiday without barriers in the smallest State Capital in Germany? With the travel guide "Barrier Free Schwerin" you can plan your trip according to handicapped accessible facilities. Further information at: [www.schwerin.de](http://www.schwerin.de).

The Schwerin Cathedral offers, together with its other guided tours, tours for the blind and visually impaired and at the TOURIST-INFORMATION at the marketplace a FM speaker can be used for group tours.

In both the Schwerin Palace and the Gallery of Old & New Masters, audio guides are available to visitors and the hearing impaired can participate in a guided tour with the help of an FM speaker. Furthermore there is an elevator for the physically impaired and in the Gallery of Old & New Masters there are even wheelchairs available for use. The blind and visually impaired can participate in public and personal guided tours with touch materials as well as a read-touch audio book of selected works of Dutch and Flemish paintings of the 17th Century and discover a tactile map of the "City of Lakes and Forests".

The Schleswig Holstein House and the Mecklenburg State Theatre have already implemented many barrier free facilities. Please enquire and let us know your needs.

- Schleswig Holstein House, Tel: +49 385 555524

- Mecklenburg State Theatre, Tel: +49 385 53000

The Festspiele MV – as the organiser of classical concerts – have long been catering for the needs of people with handicaps with, among other things, audio amplifiers or tactile solutions for the blind. Further information can be found at [www.festspiele-mv.de/barrierefrei](http://www.festspiele-mv.de/barrierefrei).

The Competence Centre for People with Hearing and Sight Handicaps offers information and support in the area of barrier freedom. Currently this theme is being especially supported by the affiliated project "Culture without Barriers".

Contact: +49 385 3000815 or [kompetenzzentrum@hdb-sn.de](mailto:kompetenzzentrum@hdb-sn.de).

Would you like to borrow an Electro-Scooter or a wheelchair?

- STOLLE Medical Supplies, Tel: +49 385 590960

- Hofmann Medical Supplies, Tel: +49 385 5923811



*Experience the new rhinoceros habitat and the Humboldt House barrier free.*

*Themed group guided tours are possible.*

*Experience the Zoological Garden Schwerin comfortably – an Electro-Scooter or Zoo-Car can also be booked*



# Schwerin – See, feel, be there

*Every day in family friendly Schwerin promises a special experience for the whole family. Time travel through the Centuries can be experienced in the Open Air Museum for Folklore Schwerin-Mueß. You will find the answer to the question of how people used to spend their days without television, Internet and running water. By rain or shine – listening to fairy-tales or the Atole playground are always popular with the littlies. Lively jungle animals and cuddly earth-dwellers live next to one another in the large zoo. In the Nature Conservation Station in Zippendorf there are no exotic animals but many indigenous types of flora and fauna to discover.*

Especially exciting is the trip up to the 100m high viewing platform of the television tower. From here you get a bird's-eye view of the city and its surroundings. A paddle boat ride on the Ziegelinnensee is also great fun. Just a few kilometres away from Schwerin in Kritzmow is an archaeological discovery path along which burial mounds and megalithic tombs as well as the ruins of a medieval farm can be explored.

Very close to this you can learn lots about the indigenous nature on the nature path in Karnin and also romp around to your heart's delight.



## Explore the Forest Discovery Path "Sagenhafte Lewitz"

*In Friedrichsmoor – in the middle of the Waldlewitz – you can get to know the legendary Lewitz and its characters. A forest discovery path is just waiting for bike riders and hikers to discover it. These four and twelve kilometre long circuit trails lead from Jagdschloss Friedrichsmoor through the south west part of Waldlewitz. There are numerous spots where you learn about the different legends and fairy-tale characters of the Lewitz and experience their stories through the installations.*

*There is also information about the landscape history, forestry and natural science relevant to the legends. Along the path there are wonderful wooden sculptures which were carved by various artists. There are signs showing the way to the path from the Jagdschloss Friedrichsmoor.*

[www.dielewitz.de/walderlebnispfad](http://www.dielewitz.de/walderlebnispfad)

Open Air Museum for Folklore  
Schwerin-Mueß  
Alte Crivitzer Landstraße 13  
19063 Schwerin  
Tel: +49 385 208410  
[www.schwerin.de/freilichtmuseum](http://www.schwerin.de/freilichtmuseum)



**Q15** | 🧑🏻🧑🏼🧑🏽🧑🏾🧑🏿 | 🏠 | 🌿 | 🕒 Original farmhouses with dark chambers, aromatic fruit orchards with resident bee hives, exciting exhibitions in an old half-timbered shed, an ancient, rusty, village blacksmith shop where even today iron often glows, a village school in which, for decades, children learnt reading and maths whilst sitting at old wooden desks. The Open Air Museum for Folklore in Schwerin-Mueß communicates history in a palpable and comprehensible way, the landscape – set on the south bank of Lake Schwerin – is delightful.



**Schleifmühle**  
Schleifmühlenweg 1, 19061 Schwerin  
Tel: +49 385 562751  
[schleifmuehle-schwerin@arcor.de](mailto:schleifmuehle-schwerin@arcor.de)  
[www.schleifmuehle-schwerin.de](http://www.schleifmuehle-schwerin.de)

**Q14** | 🧑🏻🧑🏼🧑🏽🧑🏾🧑🏿 | 🏠 | 🌿 | 🕒 In the reconstructed water-driven mill at the edge of the castle gardens, granite is cut, sanded and polished just like it was in the 18th century. In addition to large stone products, the stone grinders also produced jewellery from local stones and gemstones. In the buildings and also in the grounds there are many objects relating to the history of stone working to look at. The stone grinding mill is part of the Schwerin Royal Seat ensemble – On the way to World Heritage. Opening hours: April – November daily 10am – 5pm

Zoological Garden Schwerin  
An der Crivitzer Chaussee 1  
19061 Schwerin  
Tel: +49 385 395510  
Fax: +49 385 3955130  
[www.zoo-schwerin.de](http://www.zoo-schwerin.de)



**Q15** | 🧑🏻🧑🏼🧑🏽🧑🏾🧑🏿 | 🏠 | 🌿 | 🕒 The tallest and heaviest animals in Mecklenburg West Pomerania are at home at the Schwerin Zoo. The new rhinoceros savanna takes up an area of over 8,000 m² and not only do a small herd of these behemoths run here but zebras, goats and guinea fowl also keep them company. A diverse visitor area with adventure paths and exciting views into the animal habitats invite you for a stroll. The Schwerin Zoo is striving to be barrier free.



**Schweriner Kletterwald**  
An der Crivitzer Chaussee 15, 19061  
Schwerin, Tel: +49 385 5894551  
[info@schweriner-kletterwald.de](mailto:info@schweriner-kletterwald.de)  
[www.schweriner-kletterwald.de](http://www.schweriner-kletterwald.de)

**Q15** | 🧑🏻🧑🏼🧑🏽🧑🏾🧑🏿 | 🏠 | 🌿 | 🕒 Wobbly hanging bridges, Tarzan jumps and speedy rope descents: The Climbing Forest challenges every visitor to test their limits and surpass them. Right next to the zoo you'll find 8 aerial obstacle courses of varying difficulty with suspended beams, nets, 10 "flying foxes", a slide, a sled ride, lots of surprises, and a free fall from a height of 10 m. Whether you are a beginner or an old hand: In the Climbing Forest everyone can test their boundaries and exceed their limits. So, off to the forest! And up to the trees! Refreshments will be served on the terrace of the "Waldcafé" next to the zoo, open from Easter until the end of October.



*Open Air Museum for Folklore Schwerin-Mueß  
Summer holidays are exciting and entertaining for both young and old.  
Each Wednesday from 10am the children's programme delights with its  
ever-changing themes and at 2.30 pm a puppet theatre performs  
Grimm's Fairy Tales in the barn.*

*Dates at:  
[www.schwerin.com/events](http://www.schwerin.com/events)*



### Families in Schwerin

*The Volkshochschule Schwerin Sternwarte/Planetarium is both fascinating and interesting. Here you will discover many unbelievable things about the heavens, constellations and planets. In clear weather you can observe the sky through a telescope. Every Sunday and Wednesday there are guided tours.*

*Other opening times can be found in the section  
"Service in Schwerin" (page 72)*





### Fire Brigade Museum

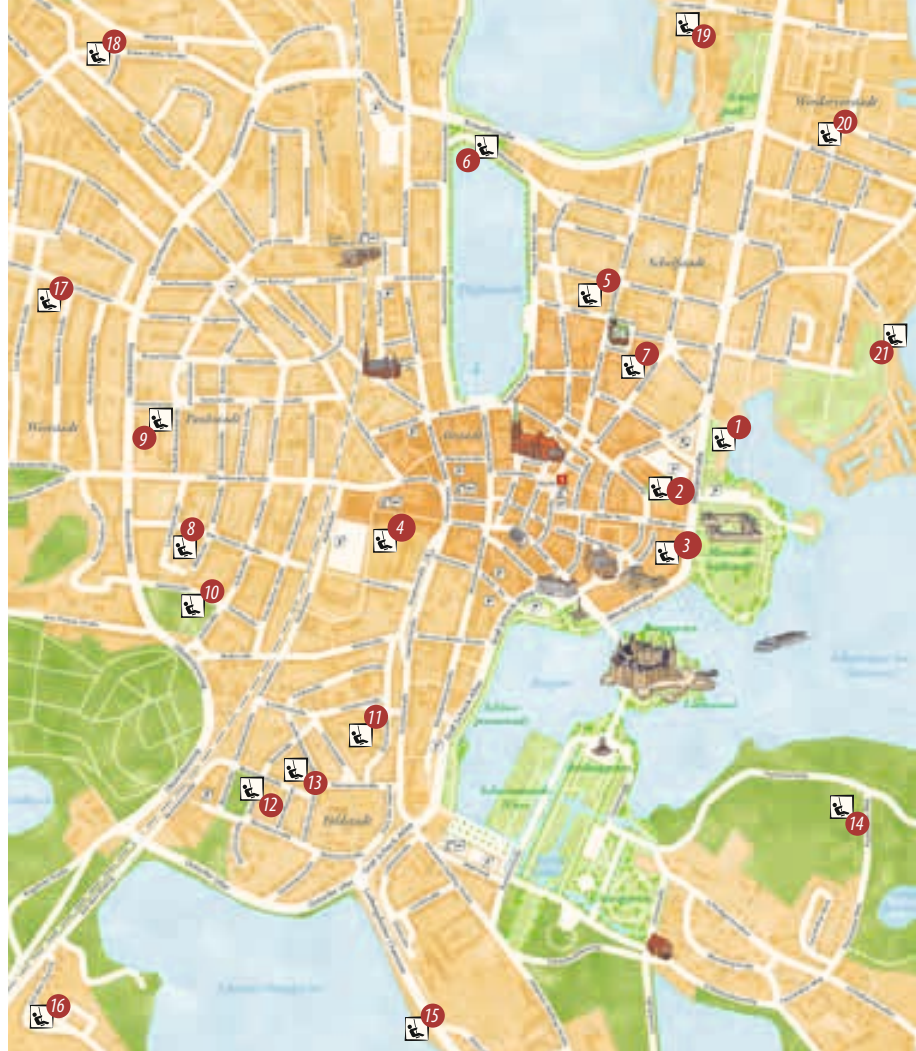
Hamburger Allee 68, 19063 Schwerin  
Tel: +49 385 20271539  
www.ifm-schwerin.com

**R14** | Of course Germany's largest fire brigade museum is a paradise for fans of big, red cars and fire brigade history. 4,500 m<sup>2</sup> exhibition area with international fire brigade technology, medals, model cars, helmets and much more are waiting to be discovered and tried out. Friends of the fire brigade look after the museum as volunteers. The expert museum education offers for groups are especially recommended.

Miniature Park "Lütt Schwerin"  
Ratzeburger Straße 48, 19057 Schwerin  
Tel: +49 385 4807822  
www.luettt-schwerin.de



**Q12** | Eye to eye with Earl Niklot – in "Lütt Schwerin" the castle city lies at the feet of both big and small explorers. In the middle of a parkland area visitors can conquer Schwerin at a ratio of 1:25. There are many play areas on the expansive grounds to provide variety. Tip: Attentive explorers can discover historical secrets of the big city in "Lütt Schwerin".



## Playgrounds at a glance

**Altstadt:** 1 Am 'Beutel', 2 Großer Moor,  
3 Tappenhagen, 4 Spieloase Goethestraße  
**Schelfstadt:** 5 Am Schelfmarkt,  
6 Nordufer Pfaffenteich, 7 Lindenstraße  
**Paulsstadt:** 8 Müllerstraße,  
9 Demmlerplatz, 10 Platz der ODF

**Feldstadt:** 11 Töpferberg,  
12 Bleicherufer, 13 Große Wasserstraße  
**Other districts:** 14 Spielplatz der  
Atole, 15 Slüter Ufer, 16 Auf dem Dwang,  
17 Carl-Moltmann-Straße,  
18 Löwenplatz, 19 Marie-Hankel-Straße,  
20 Schwälkenberg, 21 Am Werder

Detailed maps are available at the TOURIST-INFORMATION Schwerin.  
A perfect day for fun, games and sport can be found at: [www.schwerin.com/families](http://www.schwerin.com/families)



### Tip!

Whether on the fine sand beach of Zippendorf or in one of the open air swimming areas in and around Schwerin, you can always find somewhere to cool off.

## Window shopping with pleasure and fun

*When you stroll through the cosy streets of the inner city you will find all sorts of things exceptional, artistic and beautiful behind the antique half-timbered gables and modern facades. Here, where the owners often still stand behind the counters of their lovingly run shops themselves, are you not just met with professional advice but also time for a friendly talk and a heart-felt smile to brighten your day.*

Pieces to fall in love with, things for eternity or practical for swift use: In the historical alleyways, new passages and large shopping centres in the city, you are sure to find what you are looking for. There are specialities from the region and from the most far-flung parts of the world, sensory and useful, gaudy and artistic, new and second-hand, sometimes even superfluous – but always beautiful. Along the way you can enjoy pleasurable breaks in the lively street cafes or let the sun shine on you whilst you relax on the stylish street furniture.



### Window shopping in Schwerin

*The shops and the centre of the old town open their doors on open-business-Sundays and attract customers on these days with great offers and many activities. Whether you let yourself be swept along the winding alleyways of the old town or succumb to the glamorous shopping passages: Schwerin tempts to many a holiday souvenir.*

*Open-business-Sundays 2017 – 30th April | 3rd September | 1st October | 3rd December  
Late-Night-Shopping – 9th and 16th December  
Dates for 2018 at [schwerin.de](http://schwerin.de)*

*More information: [www.schwerin.info/shopping](http://www.schwerin.info/shopping)*





### 1 Münzstraße – Art and life

Only 2 minutes walk from the market square, the Münzstraße is a little hidden in the historical Schelfstadt district.



Fashion, jewellery, gifts and the best of second-hand: This street is an insider's tip when you enjoy an informal atmosphere of browsing individually. The artists and craftsmen, who have their ateliers here, don't mind having you look over their shoulders as they work.

**2 Market square – Indulgence and history** surrounded by cafes, restaurants and numerous shops characterises the Market Square in the centre of the Old Town. There are time-honoured traditional shops like the delicious pastry



shop with freshly roasted coffee or the more unusual like Scandinavian design.

**3 Puschkinstraße – Style and elegance** Puschkinstraße connects Schloßstraße with the market square and the Schelfstadt district. The owner-run boutiques between Schloßstraße and the market square enthralls the ladies. Accessories, souvenirs and artful sundries can be found here. From the market square towards the Schelfstadt district you can find formal fashion, design and artworks as well as culinary delicacies.

**4 Friedrichstraße – Flair and unique finds** A street with class and noble countenance. Behind the wonderful and splendid facades, popular specialty shops for material, useful, beautiful and technical are ensconced. Lovers of the old and ancient appreciate the antique shops and friends of the arts, music and culture can enjoy the resonance.

**5 Großer Moor – Handcrafts and Design** From the Royal Stables Gate up to the old town there are many small, new and distinguished old houses standing opposite each other. The lindens of Großer Moor meander inbetween. Schwerin natives hint that this used to be a "red light" area. Today there are specialty handcrafts: Sail makers, book binders, hand weaving, chocolate manufacture, furrier, watch maker master, jewellery design and an honest-to-goodness milliner.

### 6 Schusterstraße –

Delicacies and delicious wines, coffee, tea selections, chocolate and cupcakes can also be taken away but we recommend to stay and relax. Maybe a titbit of literature on the side? Or a souvenir in silver or gold?



**7 Buschstraße – Fantasy and framework** On historical cobblestones, the Buschstraße leads you on a small time travel from the noble buildings of the Schloßstraße directly to the old city centre. Half-timbered houses tower on both sides. Under their rooves you will find rustic gastronomy, fashion from formal to ethno and accessories. This street is a popular spot for the best snap shot of the cathedral.

### 8 Mecklenburgstraße – Rambling and relaxing

Mecklenburgstraße stretches, firstly, as a city-villa quarter then as a dead straight shopping mile from Graf-Schack-Allee to the terraces of the Pfaffenteich (Preacher's Pond), edged by cafes and numerous shops in highly noble buildings. Especially recommended is the old Post Office building and the fairy-tale Demmler Villa at the Pfaffenteich.



**10 Schloßstraße** – Royalty and nobility  
Coming from the palace and rambling past beautifully decorated shop windows, step into one of the buildings rich in tradition and treat yourself to some of the many delicacies just as the nobility did in the year 1755. Visit the traditional owner-run shops. Book and tea shops as well as individual stores tempt to buy presents.

**9 Schmiedestraße** – Chic und charm  
Writing paper to match an elegant pen, outdoor clothing, matching handbag and shoes, a marzipan gateau in the shape of the palace, cheese specialities and croissants or a fitting holiday souvenir. If your shopping list looks a bit like this then head towards the Schmiedestraße.



Living Art Gallery  
Wohn-Kunst-Galerie

Rüdiger Lasch  
Friedrichstraße 12, 19055 Schwerin  
Tel: +49 385 565066  
www.wohnkunstgalerie.de



**D5** This is Mecklenburg's most comprehensive sales exhibition for original paintings. The blend of art from supra-regional paintings to etchings of Schwerin city motives guarantees

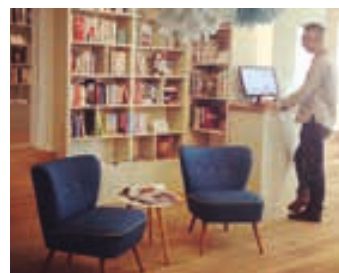
diversity. Extravagant solid timber furniture, bronze and living accessories round out the selection.

Stone and Design –  
Ahnsorge Goldsmith  
Schusterstraße 11, 19055 Schwerin  
Tel: +49 385 512547  
www.ahnsorge-schmuck.de



**F6** Gold – silver – platinum – gemstones – for more than 30 years the half-timbered house on the corner of Schusterstraße and Enge Straße has been the address for lovers of beautiful stones and special design. Bühler, Charlotte von Ehinger-Schwarz, Erfurt Design, Charizzma, Finnish jewellery, opals from Australia, exclusive Schwerin city rings, beautiful amber jewellery, coral, pearls and wedding rings distinguish the many-faceted selection of the goldsmith Ahnsorge.

A GOOD DAY – Literature and the like  
Buschstraße 16  
19053 Schwerin  
Tel: +49 385-39379977  
www.ein-guter-tag-schwerin.com



**E5** Your book store in the heart of Schwerin. An individual atmosphere, a hand-picked assortment, comfortable sitting areas and an extensive drinks menu invite you to browse and linger.



Marienplatz-Galerie  
Marienplatz 11, 19053 Schwerin  
Tel: +49 385 59360957  
info@marienplatz-galerie.de  
www.marienplatz-galerie.de



**F5** From outside the Marienplatz-Galerie glitters with its highly modern glass facade. Inside an elegant shopping temple with a classical atmosphere in white and gold. Well-known shops such as Toys“R”Us, C&A, Depot, REWE, Deutsche Post, dm Drogeriemarkt, Cubus and Kult have found their places in the Marienplatz-Galerie. In the gaps, smaller shops and boutiques entice. The shopping dreams of both young and old come true over four levels. And on top of this a large eatery area offers gastronomy from schnitzel to kebabs or be carried off into the lightness of Asian cuisine. Thanks to the direct connection to the traditional department store Kressmann, the Marienplatz-Galerie is the ideal starting point for your ramble through Schwerin's picturesque old town and ducal castle.

**Right in the centre**  
You can't park any closer to the centre than the Marienplatz-Galerie parking garage. Coming from the direction of Wismarsche Straße you will easily find the entrance with the GPS address Martinsstraße 4.

## Shopping in Schwerin

Schlosspark-Center Schwerin

Center Management

Marienplatz 5 – 6, 19053 Schwerin

Tel: +49 385 593200

Fax: +49 385 5932022

info@schlosspark-center-schwerin.de



F5  Welcome: Monday to Saturday until 8pm

The Schlosspark-Center in Schwerin is the snazzy shopping magnet of the city: Central and easy to reach. The bus lines 5, 7, 12, 14 and the tram lines 1, 2 and 4 stop at the Marienplatz in front of the centre. Drivers will find more than 1,100 parking spots in the parking area and the first hour's parking is free. There is a charging station for electro cars on park deck 1. One hundred and twenty shops, restaurants and cafes await you in the modern, naturally lit centre and free Wi-Fi is available on all three levels – a paradise for all shopping queens and kings. Natural-



ly there is a large assortment of fashion brands but also gift ideas, electric and multimedia, chemist and perfume articles, shoes, books and much more.

### Shop in comfort and enjoy

If you become hungry or thirsty, simply take a break in one of our cafes or restaurants – there is something for every appetite, from hearty to exotic, from Chianti to coffee.



Especially delightful: Many facilities which make a visit easier, e.g. a baby change room, lockers, barrier free access, or kids cars to borrow.

Activities and special events take place here regularly. Before you come, visit [www.schlossparkcenter-schwerin.de](http://www.schlossparkcenter-schwerin.de) or on [facebook.com/Schlosspark-Center](https://www.facebook.com/Schlosspark-Center)



**Tip!**  
The Center Voucher  
can be used all over Germany!



## Shopping in Schwerin

Regular events, music and dance as well as presentations of art, culture and education round off the range of offerings.

### Parking garage SCHWERINER HÖFE

Arsenalstraße 22 – 28

19053 Schwerin

Telefon: +49 385 5814670



Schweriner Höfe

Marienplatz 1 – 2, 19053 Schwerin

Tel: +49 385 5814670

[www.schweriner-hoefe.de](http://www.schweriner-hoefe.de)



**A3** In the heart of the city, right at the Marienplatz, are the Schweriner Höfe – a shopping quarter of an exclusive kind. Small, mostly owner-run shops, individual and creative shops alternate with a variety of gastronomy. Every Friday a busy farmer's market takes place in the winding alleys and courtyards. This quarter is characterised by loving architecture and the street names reflect the building's history – Tabakhof (Tobacco Court), Brunnenhof (Well Court), Capitolhof (Capital Court) and Klöresgang (Colourful Walk).


**E4** Running through the whole city to your parking spot with all your shopping? Not necessary. From the parking garage it is just a few minutes' walk to any place in the old town. The easy to navigate parking garage with 380 comfortable parking spots is well signposted in the parking-help system and open around the clock. From May till September, the uppermost, open air deck becomes the Beachclub with a special atmosphere and a direct connection to the Centre for Health and outpatient Medizin GUSANUM (Medical Salt Baths).





- buying - selling - saving to build  
- finance - insurance

Please speak to our Advice Team  
at Mecklenburgstraße 13  
Telephone 0385 551 3304, [info@spk-m-sn.de](mailto:info@spk-m-sn.de)

 Sparkasse  
Mecklenburg-Schwerin

Please visit our website at [www.spk-m-sn.de](http://www.spk-m-sn.de). We are happy to give advice.  
When it's about money, it's – Sparkasse.



## Heritage for the world

Förderverein Welterbe Schwerin e.V.



The beauty and excellent potential of Schwerin are a result of the 900 years of government activity on the island that is home to Schwerin Palace and in the ducal seat of Schwerin itself. They are also clearly the fruit of the labors of the many people involved and who call Schwerin home.

This is where the many palaces and fabulous ensembles arose, nestled in the unique natural landscape of Ice-Age formations. They are impressive witnesses to a nature-oriented landscaping and architectural tradition over the long course of the city's governmental history.

Schwerin has affirmed its extraordinary significance as a potential World Heritage site for some time now and applied for recognition as UNESCO World Heritage. On 20 June 2014 Schwerin's application, "Residence Ensemble Schwerin – Cultural Landscape of Romantic Historicism," was added to Germany's list of proposals.

The association Welterbe Schwerin Förderverein has also been committed to communicating the beauty and significance of our heritage for the world for the last two years.

Together with children and young people, citizens and entrepreneurs and with the authorities backing the application, namely the state parliament, the government of the state of Mecklenburg-Western Pomerania and the City of Schwerin, we present the extraordinary nature of this magnificent ensemble in Schwerin to a broad public as our heritage for the world.

Painting and story-telling activities, project weeks with children and young people provide valuable and previously unknown information about the European history of the city and the state. Concerts and public conferences at extraordinary venues attract a great many visitors. And on guided tours of the city, the ensemble and the palace, various artists, historians and citizens of Schwerin convey to visitors and guests famous highlights of European history from Schwerin, in the languages of the world.

You are invited to actively explore the world heritage of Schwerin's outstanding palace and city ensemble, set as they are in a unique natural landscape – and formed from the Earth's resources.

[www.welterbe-schwerin.eu](http://www.welterbe-schwerin.eu)

# Indulgence behind historical facades



*Rustic or elegant, wine house or brewery, cosy booth or elegant hall:  
The restaurants in Schwerin await you with an inviting atmosphere  
and friendly service. Wherever your appetite leads you,  
the diverse restaurant menus will not disappoint you.*

Culinary delights in Schwerin range from traditional Mecklenburg cuisine to modern light fare, from Mediterranean finesse to Caribbean temperament, from hearty meat dishes to fine fish specialities. Delicacy set-meals and extensive buffets, lunch specials and evening menus make culinary dreams come true. Seasonal and regional delicacies such as the famous Mecklenburg asparagus, fresh Baltic Sea smelt or aromatic chanterelle mushrooms are much loved by the locals and their guests.

*Enjoy your meal!*



## GourmetGarten | Mid July

*Begin a culinary expedition around the Palace Garden Pavilion. An indulgent weekend with especially selected summer wines, art & music, pleasures & savoir vivre awaits you. During all three days Schwerin chefs will, in the centre of the park landscape, prove their culinary mastery and compete for the title of "Gourmet of the Year". A weekend full of delights, not just for connoisseurs.*

*Mid July | Venue: Palace Garden  
Information available at the TOURIST-INFORMATION  
Tel: +49 385 5925215, [www.schwerin.com](http://www.schwerin.com)*



*H*otel & Restaurant  
Niederländischer Hof  
Alexandrinenstr. 12 – 13, 19055 Schwerin,  
Tel/Fax: +49 385 59110-0/-999  
hotel@niederlaendischer-hof.de  
www.niederlaendischer-hof.de

**C5** If you visit this lovely city, you should also drop in to the “Niederländer”, as the locals lovingly call it. The restaurant can boast of over 100 years of history. The beautiful location right on the Pfaffenteich invites you to linger with a cup of coffee and homemade confectionary. Discover the regional and international delicacies on the excellent menu. The restaurant offers a wonderful view over the Pfaffenteich, the cathedral and the city panorama. A hotel and restaurant with heart and charm.

Restaurant & Café  
Herzogliche Dampfwäscherei  
Großer Moor 56, 19055 Schwerin  
Tel: +49 385 562956  
Fax: +49 385 562957  
www.herzogliche-dampfwaescherei.de



**E7** Today our restaurant and cafe are run in the former premises of the historical Ducal Steam Cleaners very close to the palace, theatre and museum. In the restaurant and on our beautiful garden terrace allow yourself to be pampered by the creative, modern and varying cuisine for lunch or a stylish evening meal.  
Opening times:  
Mon – Sat 11am – 10pm  
Sun -10am – 10pm

*At every meal you cater to two guests,  
your body and your soul.*  
- Epiktat -

### Actors on a pub crawl

*Unique to Germany, in November the Mecklenburg State Theatre turn the pubs in the city into their stage. With 10-15 minute programmes, the actors and actresses from all types of performing arts tour from one gastronomical establishment in the Schwerin inner city to another according to a set plan. The TheaterThekenNacht has now achieved cult status in Schwerin and in 2010 won an award in the “365 Places in the Land of Ideas” competition.*

### The Fritz

Dorfstraße 3 b, 19061 Schwerin  
Tel/Fax: +49 385 646370/-99  
info@das-fritz.de, www.das-fritz.de



**R13** The Fritz restaurant has seating for about 50 guests and its two terraces offers good German cuisine under the motto “Fresh in the North” with products from the region. If you’d like to celebrate something, you can also stay with us here. Parking spots available.

*W*einhaus Wöhler  
Puschkinstraße 26, 19055 Schwerin  
Tel/Fax: +49 385 555830/-15  
info@weinhaus-woehler.de  
www.weinhaus-woehler.de

**E6** After its renovation this restaurant presented itself as a multi-faceted restaurant with many various booths and a new area in the light-flooded atrium. The glass roofed, light and friendly room has seating for about 45 guests. Discover seasonal cuisine with freshly prepared fish, meat and game dishes. Specialities are offered throughout the whole year. What was once a wine cellar is now a rustic and cosy guest area with room for about 30 people. The perfect atmosphere for your individual wine tasting or your family celebration with candlelight and an open fireplace. The historical wedding room offers the best possible venue to celebrate weddings, birthdays or anniversaries. Conference guests are also very welcome.

### Winzerfest Schwerin

*The Wine Festival in Schwerin is a must for wine lovers and connoisseurs. In the heart of Schwerin, the vintners present their newest and best years. End of August/beginning of September at the Old Town Marketplace*







### ZEPPELIN Restaurant

Schweriner Höfe, Capitolhof  
Wismarsche Straße 126 – 128  
19053 Schwerin, Tel: +49 385 55585985,  
Fax: +49 385 5936694  
info@zeppelin-restaurant.de  
www.zeppelin-restaurant.de

**E4** | 🍴 | 🍷 | 🍺 | 🍻 | 🍽️ | 🌿 | 📶 Within the brickwork of the heritage protected former grain storehouse on Lake Ziegel You can find our stylish restaurant, which has been awarded for its outstanding cuisine, using as many regional and organic products as possible. Fine Mecklenburg dishes and seasonal specialities are especially recommended. Both inside and on the wooden terrace you have a splendid view of the water and the summer sunsets. Opening Times: Daily 12am – 2pm and 6pm – 10pm

**E4** | 🍴 | 🍷 | 🍺 | 🍻 | 🍽️ | 🌿 | 📶 Schnitzel, steaks or burgers – ZEPPELIN in the Schweriner Höfen is known in Schwerin and beyond for its beef, pork and poultry specialities. The chefs here skilfully combine hearty side-dishes, sauces, dips and grilled vegetables or crisp salads. The menu leans towards both German and American cuisine and is constantly being complemented with creative, seasonal dishes. In ZEPPELIN everything is freshly prepared. Special attention is taken to ensure the quality of the products and that renewable and regional production remains a priority. The ZEPPELIN has seating for over 70 people and a large terrace for celebrations and events of every kind. Families and groups can enjoy the wide range of specialities whilst sitting together. A candle-light dinner in the unique ZEPPELIN atmosphere is also a culinary highlight. Opening Times: Mon – Sun from 11am

Altstadtbrauhaus Schwerin  
"Zum Stadtkrug" since 1937  
Wismarsche Straße 126, 19053 Schwerin  
Tel/Fax: +49 385 5936693/-94  
info@altstadtbrauhaus.de  
www.altstadtbrauhaus.de



**E5** | 🍴 | 🍷 | 🍺 | 🍻 | 🍽️ | 🌿 | 📶 "The Stadtkrug" brewery with a typical north German character: Down-to-earth, hearty, cosy and – just like the local Schwerin people – positive, cheerful and with sunshine in its heart. What the atmosphere promises is reflected in the menu and the draught beer. Most of the menu is centred around regional specialities for both small and large appetites. The menu is also extended seasonally through various meat and fish dishes. Big city flair meets village tranquillity: Large areas with long counters, benches and tables on one side, cosy corners and nooks on the other side. Beer lovers can refresh themselves at the Schwerin Altstadtbräu with a light or dark beer or an India Pale Ale on tap. The Stadtkrug offers seating for up to 160 guests for celebrations and events. "Family Style Dining" for up to 24 guests is a special highlight at the rustic Altstadtbrauhaus. Opening Times: Mon – Sun from 11am

Wallenstein Restaurant  
Werderstraße 140, 19055 Schwerin  
Tel: +49 385 5577755  
info@restaurantwallenstein.de  
www.restaurantwallenstein.de



**G7** | 🍴 | 🍷 | 🍺 | 🍻 | 🍽️ | 🌿 | 📶 Directly opposite of Schwerin Palace and next to the boat tours of WEISSE FLOTTE Schwerin the Restaurant & Café Wallenstein is located. Here you can enjoy the regional cuisine at the same time as you enjoy the marvellous view of the fairy-tale castle and Lake Schwerin. The restaurant is the ideal starting point for a boat trip, a castle or city tour or a visit the theatre or museum. Open all day, daily.

Restaurant "aurum"  
im Hotel Speicher am Ziegelsee  
Speicherstraße 11, 19055 Schwerin  
Tel: +49 385 50030  
Fax: +49 385 5003111  
info@speicher-hotel.de  
www.speicher-hotel.de



**A7** | 🍴 | 🍷 | 🍺 | 🍻 | 🍽️ | 🌿 | 📶 Within the brickwork of the heritage protected former grain storehouse on Lake Ziegel You can find our stylish restaurant, which has been awarded for its outstanding cuisine, using as many regional and organic products as possible. Fine Mecklenburg dishes and seasonal specialities are especially recommended. Both inside and on the wooden terrace you have a splendid view of the water and the summer sunsets. Opening Times: Daily 12am – 2pm and 6pm – 10pm

Guesthouse "Zur guten Quelle"  
Hotel & Restaurant  
Schusterstraße 12, 19055 Schwerin  
Tel: +49 385 565985  
Fax: +49 385 5007602  
info@gasthof-schwerin.de  
www.gasthof-schwerin.de



**E3** Our tradition-rich guesthouse is located in the centre of the old town. The cosy guest lounge is well known for its great cuisine and is open daily. A wide range of dishes, selected wines and fresh draught beers are ready for the asking.



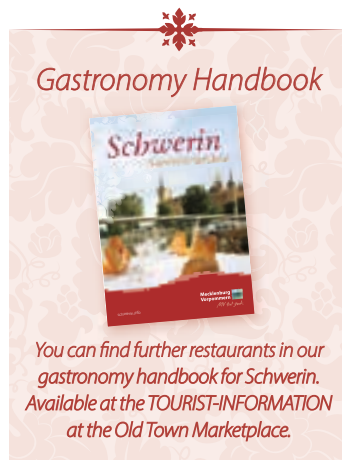
*W*inehouse Uhle  
Schusterstraße 13 – 15  
19055 Schwerin  
Tel: +49 385 48939450  
Fax: +49 385 48939459  
www.weinhaus-uhle.de  
mail@weinhaus-uhle.de

**E5** To meet modern hospitality demands, the entire Weinhaus Uhle has been renovated according to barrier free and modern norms. The 16 rooms and 2 suites with their clear lines and quiet areas are harmonious and calming. Soft colour accents and every comfort means peace and tranquillity – in the heart of Schwerin. Experience the enthusiasm for high-quality service and the passion for wine. Our fine cuisine ensures very special culinary delights which are twinned with selected wines and always prepared with the best and freshest ingredients from the region. In our historical restaurant we will serve you well thought-out set meals or á la carte. Experience an evening rich in delicacies. Our bistro offers casual cosiness in a friendly atmosphere for the smaller appetite, as a side-dish to wine tasting and for all who like the uncomplicated and variety. In our wine shop you will find a selection of wines from more than 300 different national and international cultivation regions.

Schweriner Television Tower  
Hamburger Allee 72 – 74  
19063 Schwerin  
Tel/Fax: +49 385 20100-10/-20  
info@fernsehturm-schwerin.de  
www.fernsehturm-schwerin.de



**R14** | Don't let this experience pass you by! At 101m – high over the rooftops of Schwerin, the view across the lakes and forests is the perfect setting for every occasion.



Schweriner Schloss Localitäten  
Palace Café & Orangery Café  
Lennéstraße 1, 19053 Schwerin  
Tel: +49 385 5252915  
Fax: +49 385 5252914  
info@schweriner-schloss-localitaeten.de  
www.schweriner-schloss-localitaeten.de

**E6** | In the noble premises of the Schwerin Palace, historical ambience in the Palace Cafe combines with a wonderful view across the Baroque Palace Garden and Lake Schwerin from the Orangery. Seasonal and regional dishes are complemented through a selected wine menu so that we can spoil our guests to the very highest level possible. Likewise we will organise weddings and events of all kinds in the sumptuous rooms. Experience Schwerin from its best side and take time out for a few unforgettable moments.



Opening Times:  
Orangery Café:  
April – October 10am – 6pm  
Palace Café:  
November – March 10am – 5pm

Ruderhaus Restaurant & Café  
Franzosenweg 21, 19061 Schwerin  
Tel: +49 385 20241259  
info@ruderhaus.info  
www.ruderhaus-schwerin.de



**17** | The most beautiful terrace in the city – this is the title given to the “Ruderhaus” from its regulars because the view from the lakeside over towards the palace at sundown is second to none. Stylish ambience and a young, fresh cuisine makes it worth lingering a little longer.

*R*estaurant Friedrich's  
Friedrichstraße 2, 19055 Schwerin  
Tel: +49 385 555473  
Fax: +49 385 5923665  
info@restaurant-friedrichs.com  
www.restaurant-friedrichs.com

**E6** | Fresh, light, regional cuisine and a fantastic view of the Pfaffenteich: Pure delight in one of the most beautiful buildings in Schwerin, the tradition-steeped “Küken-Stiftung”. A summer terrace and the balcony radiate a Mediterranean flair.  
Opening Times: Daily from 11am





**Restaurant LUKAS – Fish and More**  
 Großer Moor 5, 19055 Schwerin  
 Tel: +49 385 565935  
 Fax: +49 385 5508286  
 kontakt@restaurant-lukas.de  
 www.restaurant-lukas.de

**F6** | 🍴 | 🐟 | 🌿 | 🍷 | 📶 | 🚶 | 🌳 | 🏰 | 🌅 | 🌊 | 🍷 | 🍷 | 🍷  
 If you are holidaying in the beautiful Schwerin Lakes district, trying the fish specialties of the region is a must. The restaurant LUKAS offers the best opportunity to do this. As the only markedly distinct fish restaurant in the city and with more than 30 years of tradition, it offers fish from the region as well as international delicacies. On the ever-changing menu you will find trout and Baltic Sea flounder as well as lobster or scampi. For those who don't like fish, the meat dishes and vegetarian delicacies are highly recommended. You can also put your own meal together individually. Restaurant LUKAS welcomes you daily from 11.30am and spoils you into the late evening hours.

**Restaurant Café Prague**

Schloßstraße 17, 19053 Schwerin  
 Tel: +49 385 565909  
 Fax: +49 385 59364590  
 kontakt@restaurant-cafe-prag.de  
 www.restaurant-cafe-prag.de



**F6** | 🍴 | 🍷 | 🐟 | 🌿 | 🍷 | 📶 | 🚶 | 🌳 | 🏰 | 🌅 | 🌊 | 🍷 | 🍷 | 🍷  
 Surrounded by classical resplendent buildings in Schloßstraße the Café Prag is just a few minutes' walk away from Schwerin's fairy-tale palace. The traditional café in the richly-decorated corner house to Puschkinstraße – the former Königsstraße – reminds you of Viennese coffee houses with its tasteful interior, high ceilings and large windows. It's not only the luxurious ambience that attracts the many guests. This popular meeting place for locals, politicians, journalists and tourists serves, as well as various cake creations, a flavourful assortment of coffee and tea. The especially selected menu is chock-full of offers for both the large and small appetite – from breakfast through to evening meals. If the sun is shining, linger on the terrace with its view of the palace, the Alter Garten and the State Chancellery.

**Seating reservations for groups**

*Immediate, reliable and easy – we will take reservations for large and small groups in one of our cosy restaurants in Schwerin. A quick phone call or an email is all it takes to plan your enjoyable evening with family or friends in an inviting atmosphere.*

*You can place a table reservation here:*

**Tel: +49 385 5925222, Fax: +49 385 562739, gruppen@schwerin.info**

**Gastronomy in the Schweriner Seenland**

**Café HerzensGUT**

An der Warnow 1  
 19065 Gneven/Vorbeck  
 Tel/Fax: +49 3860 50299-6/-7  
 cafe@gutvorbeck.de  
 www.gutvorbeck.de/herzensgut



**Q17** | 🍴 | 🍷 | 📶 | 🚶 | 🌳 | 🏰 | 🌅 | 🌊 | 🍷 | 🍷 | 🍷  
 GUT VORBECK greets its guests at the snug café "HerzensGUT". The enchanting house with the blue door invites day trippers and excursionists from May till September on Wednesdays to Sundays from 12am till

6pm and from October till December, as well as March till April, from Friday to Sunday from 12am till 6pm. Try the delicious cakes and gateau made by the cake fairy. You can also enjoy the "farm ice-cream" on the sun terrace with a view over the Warnow River.

*Gastronomy tip in the region!*

**Hotel Schloss Basthorst**

*is approximately 20 km from the state capital Schwerin. Following tree lined avenues and narrow forest roads, you reach the 200 year old property. Hidden in the beautiful Mecklenburg forest and meadow landscape, Schloss Basthorst offers relaxation and pure enjoyment. The restaurants in the castle (De Blauwe Kroon) and the forest residence (Wilhelmina Helena) pamper their guests with a combination of traditional Mecklenburg cuisine and fine French dining. In the castle lounge or on the sunny terrace, home made cakes, ice cream and light meals are served.*



*Surrounded by the unique Basthorst atmosphere, you can enjoy a good glass of wine or one of our own Basthorster beers.*

*The English gardens and the adjacent Glambeck Lake invite to a lengthy nature walk.*



**Q19** Hotel, restaurant, spa; Schlossstr. 18, 19089 Crivitz/Basthorst  
 Tel/Fax: +49 3863 525 -0/-555, info@schloss-basthorst.de, www.schloss-basthorst.de



### RESTAURANTkranichhaus at WINSTONGolf

Kranichweg 1  
19065 Gneven/Vorbeck  
Tel/Fax: +49 3860 5022-00/-22  
restaurant@winstongolf.de  
www.winstongolf.de/kranichhaus

**P18** Where would you like to eat? Surrounded by tartan in the Scotland Room, on the sunny terrace with a view over Lake Vorbeck, at an elegantly decorated table with candlelight or rather with bare feet in a wicker beach chair at the beach club? The locations of the RESTAURANTkranichhaus are as various as the menu. Snacks and fresh salads, pasta and tender beef steaks and, of course, the legendary WINSTON burger are served here surrounded by the panorama of "Germany's best Golf Course" (Golf Magazine). Sometimes people travel around the world, and sometimes just around the corner to come to our monthly Sunday brunch. From March till December seasonal specialties have a special culinary place of honour. The "Kitchen Fairy" conjures new creations daily and the barista prepares the coffee specialties to go with them.

Café & Restaurant Castle Kaarz  
Obere Dorfstraße 6  
19412 Weitendorf/Kaarz  
Tel/Fax: +49 38483 308-0/-40  
urlaub@schlosskaarz.de  
www.schlosskaarz.de/kulinarik



Surrounded by a protected nature park, Kaarz Castle has thrived on a hill above the idyllic village of Kaarz for nearly 150 years. The chef serves fine dining in the Red Salon in the evenings: Seasonal dishes from the region, refined with a touch of elegance and herbs from the castle garden. A mix of classical, Mecklenburg and exotic dishes await the guests. To complete your meal, you should choose something sweet, the best would be the "Liebelele" a variety of desserts with everything your heart desires. During the day, the Castle Café entices you to taste the original Kaarz apple cake on the terrace. The fruit for this cake comes from the old fruit orchard which belongs to the castle garden together with 500 year old oaks, redwoods and cypresses. You can also enjoy a picnic or a barbecue.

### Gastronomy tip in the region!

#### Long live the spud! "Tüffelwochen" in October in the Lewitz

If you are in the region on a culinary discovery tour then you won't be able to get around the potato. It is amazing what can be conjured out of the "Tüffeln" or "Tüften". When the "Tüffelwochen" take place in autumn in the Lewitz and the spud makes up the programme, hoteliers and gastronomes create special potato dishes in the most diverse variations e.g. the Old Mecklenburg potato soup with prunes – heartily sweet and typically Mecklenburg. Thanks to the verdant forests and many lakes, delicious game and fish dishes from the region land on the plate, like the Schwerin zander filet.



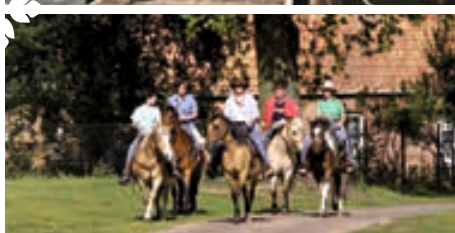
# Active in and around Schwerin



*Beyond every bend in the road  
a new world is waiting  
to be discovered.*

*From adventure tours for cyclists and walkers  
to the tee-off on cultivated green to worlds of well-being –  
the Schwerin Lake District offers holiday experiences  
for the active.*

From the seat of a bicycle Schwerin lies at your feet. Far from the busy streets the gentle landscape encourages relaxed tours. Bike tracks and walkways form a star shape from Schwerin outwards into the surrounding areas – past the contemporary witnesses of time out of stone and bark. It is worth climbing off your bike often to look at sleepy farm houses, lively museums and cosy farm cafes along the wayside. Also along the way between lakes and forests both body and soul get their money's worth. Hikes, carriage rides, horse trails or canoe trips combine nature and rejuvenation. If you would like some spoiling after your activity, you will find time-out for the senses in wellness oases. All around Schwerin there are places for those who love the water. Swimming spots mean water fun and sunny hours. Trend sports like water skiing, surfing or kiting are just as popular as rowing or paddling. It's completely up to you if you want to take the sail into your own hands or watch the goings-on on Germany's third largest lake in comfort on board a tour boat.



## Saddle-fast

*Ride around Schwerin – is the motto for the ADFC Tours,  
which take place from May till September on Saturdays  
starting from the TOURIST-INFORMATION Am Markt 14/Rathaus.  
A round trip with a knowledgeable tour guide.*

**Comprehensive map material is available at the  
TOURIST-INFORMATION, Tel: +49 385 5925215, [info@schwerin.info](mailto:info@schwerin.info)**



## City Round Trip – Discover Schwerin by bike

On an 18km round trip you can explore the state's Capital with its many sights in a relaxed and active way. The tour goes through the beautiful Old Town with its historic streets to the district of Mueß with the Open Air Museum for Folklore. On an asphalted bike track, the tour takes you along the banks of the lake, past the Zippendorf Beach area and then through the Palace Garden back to the glorious palace.

City round trip route:

- 1 Palace Bridge, 2 Boat pier of the WEISSE FLOTTE Schwerin, 3 Royal Stables,
- 4 Werderhof with harbour area, 5 Goat Market, 6 Shelf Church, 7 Pfaffenteich 8 E-Werk,
- 9 St Paul's Church, 10 Ministry of the Interior, 11 Cathedral, 12 State Chancellery/Ministries,
- 13 Alter Garten/Theatre/Museum, 14 State Archives, 15 Palace Promenade,
- 16 Bertha-Klingberg-Platz, 17 Platz der Jugend, 18 Photo point (Palace, Palace Garden),
- 19 Open Air Theatre, 20 Tax office, 21 Ministry of Economy, 22 Lake Faul, 23 Schleifmühle,
- 24 Zoological Garden Schwerin, 25 Schweriner Kletterwald, 26 Television Tower,
- 27 Open Air Museum for Folklore, 28 Viewing Tower Reppin, 29 Zippendorf Beach,
- 30 Boat pier of the WEISSE FLOTTE Schwerin /Zippendorf, 31 Swimming spot Kalkwerder,
- 32 Adebors Näs spit, 33 Adventure playground



## Bike and walkways – close to nature and active in the Schwerin Lakes District



with culinary dishes for the return journey. A tip: Take note of the blue and white square path markers which show the direction of the walking route.

Length: 15 km,  
Walking time: about 3 hrs

Route: Start at Lewenberg, Outer Lake Ziegel, Paulsdammer Weg to Wickendorf, Seelust-Pfad along Lake Schwerin, open air pool Seehof, Seehof Camping Area, pub 'zum Anker' below the clinic, Forstweg Towards Wiligrad palace  
Return route: Bus line 8 from palace Wiligrad, train from Lüstorf station

Sights: Outer Lake Ziegel, Lake Schwerin, open air pool Seehof, Wiligrad palace with exhibitions, rhododendron park

### From palace to palace

The region of Mecklenburg-Schwerin is formed of gentle hills, glittering lakes and shady forests. The walking path leads you through the middle of this native landscape. The route which is mostly close to nature and very diverse with slight slopes and some narrow paths is suitable for experienced walkers but also for ambitious beginners. Idyllic swimming spots and lookouts along the lake invite you to stop and linger. The end goal of this walk is the picturesquely situated palace Wiligrad in the middle of an attractive park and forest landscape. In the palace itself there is a museum with an Art Gallery. The café in the former palace nursery pampers weary travellers and strengthens them



Comprehensive map material for bike and walking routes can be found on page 69.

## On a bicycle through the green heart of Mecklenburg

The gentle hilly landscape around Schwerin is perfect for relaxed and exciting bike tours. Our four tour suggestions offer something for all bike riders at all condition levels.



### Tour "Blaue Acht", Lake Schwerin

N° 9 • N° 10 • Distance: About 69 km

Duration: About 6 hours • Profile: Intermediate

Inner Lake • N° 10 • Distance: About 32 km

Duration: About 2 hours • Profile: Easy

On a bike tour around the Inner Lake Schwerin you will see much of the close surroundings of Schwerin. The first milestone is the Schwerin Palace which is the seat of the state government. Further on is the stone grinding mill, a historical water mill from the 18th Century, past the Zoological Garden Schwerin to Zippendorf Beach with the Nature Protection Station "Zippendorf e.V." The Open Air Museum for Folklore in Mueß impresses with its various historical buildings from the 17th to the 20th Centuries. From Fort Reppiner, an artificial fort ruin built in 1907 there is a good view over Lake Schwerin and the islands Kaninchenwerder and Ziegelwerder. You pass the statue of "The Mother", which was erected as a memo-

rial to the Death March of the Sachsenhausen Concentration Camp prisoners, to the "Carlshöhe" in Raben-Steinfeld – an outlook platform with a panoramic view over Schwerin – and past the Medeweger Organic Farm with café and a regional, seasonal cuisine. Return past Lake Ziegel back to the centre of Schwerin.

Rund um den Schweriner See – Rad- und Wanderkarte (Around Lake Schwerin – Cycling and Walking Map), Klemmer Publishers; price: 3.90 €

Outer Lake • N° 9 • Distance: About 37 km  
Duration: 4 hours • Profile: Intermediate

To complete the Blue Eight we cycle almost 37 km along the Outer Lake and discover natural native areas and architectural features. Retgendorf, an old farming village with its Late Gothic red-brick church, invites you to water sports and swimming. A few kilometres further on is the border to the 190 hectare protected nature area "Döpe". Ride along



long, narrow, rustic paths out of the forest and come to Hohen Viecheln with an imposing hall church. The path past Bad Kleinen and the Eiertunnel (Egg Tunnel) and the Swedish Ski Jump leads you to Wiligrad and its palace. To get home, cycle through Seehof and Wickendorf past characteristic Büdnerhäusern (Büdner Houses).

Around Lake Schwerin – Cycling and Walking Map, Klemmer Publishers; price: 3.90 €



Further information at [www.schwerinensee.de](http://www.schwerinensee.de)

## Tour "Lewitz"

N° 34 • Distance: 37 km

Duration: 3.5 hours • Profile: Flat



## Tour "Sternberger Seenland"

N° 33 • Distance: 44 km • Duration:

About 4.5 – 5 hours •

Profile: Hilly, provisions must be taken!

This route combines the numerous activities along the East bank of Lake Schwerin with the natural beauty of the nature park "Sternberger Seenland". On the generous Manor premises of the Golf and Country hotel in Gneven-Vorbeck you will find the canoe station and a riding stable, and also the 45 hole WINSTONGolf course. Basthorst Castle is in the middle of a fascinating landscape not far from Lake Glambeck. A possible resting point is on the idyllic, peaceful Lake Schönlager or in the protected conservation area of Jülchendorf, surrounded by untouched meadows and forests. The manor house Kaarz Castle and its historical park with the rare trees and old orchard invite you to take a short break. Return over Kritzow, where you can visit an archaeological trail and also Langen Brütz with a redbrick church built in 1859 and the Mecklenburg Forest Glass Museum. In Leezen there is an impressive manor house and English landscape park created in 1850.

Cycle Map Schwerin – Wismar; Publisher grünes herz; 5.95 €

The starting point of the round trip is the Open Air Museum for Folklore Schwerin-Mueß which impresses with its 20th Century historical buildings and reflects the work and lifestyle of the country people. Further on to Consrade and the village church, a redbrick filled half-timbered building of oak. The old farming village of Pekatel is one of the largest village communities in Mecklenburg West Pomerania.

Past Banzkow, Sukow and Göhren you come to Crivitz, where a glance from the bell tower of the evangelical church reveals the beauty of the Crivitz landscape and the idyllically located Lake Crivitz. On the Warnow River in Gädebähn a na-



ture adventure path awaits you. In the middle of a glorious natural landscape and protected landscape areas is Raben Steinfeld – a grand ducal stud farm built in 1881 that was converted into a summer residence. The upper village is shaped by the stud caretaker's hut in English country style from the 19th Century.

Cycling Map Schwerin – Wismar; Publisher grünes herz; 5.95 €





church from the 15th Century. The Plüschow palace bewitches with its splendid building which is today an atelier for international artists. Other sights are the megalithic tombs in Everstorf Süd, Jamel and Lake Jamel, the Jassewitzer Schutzwald conservation forest – a forest history distinction and the romantic Gothic church in Proseken – one of the largest and artistic churches in the county. The difficulty profile of this trip is set a little higher because the bike trail is not signposted.

Cycling Map Schwerin – Wismar; Publisher grünes herz; 5.95 €; Schwerin Baltic Sea Coast  
"ADFC Regional Map"; 6.80 €

The manor house in Gottmannsförde is idyllically located and with the neighbouring manor house at the gateway to the State Capital of Schwerin. The unadorned village church in Groß Brütz is an evangelic-Lutheran church building from the 15th Century. Other church buildings can be found in Cramon and in Vietlütbe. There you will find the oldest conserved village church in Mecklenburg. In Schönfeld a well-preserved manor house and grounds await you. The organic restaurant "De oll Dörpschau" in Rosenow with its home grown wild herbs and farm garden invites you to stop and enjoy a meal in the former classroom decorated with historical school utensils.

Schwerin and Surroundings; Cycling and Walking Map; Dr Barthel Publishers

### Tour "Mecklenburger Land"

№ 8 • Distance: 48 km • Duration: 5 – 5.5 hours • Profile: Challenging

This cycle tour connects Schwerin with the surroundings to the west and leads through the typical Mecklenburg landscape with tree-lined avenues and broad open spaces. Tour 8 can easily be combined with the neighbouring 13 "Dümmer See". You also have the possibility to extend the tour and head in the direction of Gadebusch to discover more sights like the town church, the town hall and the Renaissance palace.



### "Culture Cycle Trail"

Lake Schwerin – Baltic Sea Beach

Distance: About 35 km

Duration: About 3.5 hours • Profile: Intermediate

The Culture Cycle Trail from Lake Schwerin – Baltic Sea Beach leads you through a culturally rich area. The classical church in Zickhusen (1824) has a bell tower with a golden cross. The villages

of Drisbeth and Dambeck invite you to linger in interesting ateliers such as a painting studio, a pottery or a wood craft studio. The Dambeck Lakes are east of Lake Schwerin and are surrounded by moors, meadows and forests. Since 1967 the lakes have belonged to a 203.67 ha protected conservation area which is the home for many endangered animals and plants. The bicycle church in Friedrichshagen is a gothic



### Riding Stable Gut Vorbeck

An der Warnow 1  
19065 Gneven/Vorbeck  
Tel/Fax: +49 3860 502996/-7  
reiten@gutvorbeck.de  
www.gutvorbeck.de/reiten

**Q18** | 🇩🇪 | 🏇 | 🐾 | ♿ | 📶 | 📶 GUT VORBECK riding stables is the perfect starting point for a horseback ride. Guided rides are offered. Individual riding lessons are also possible at any time. 40 hectares of land with broad meadows and horse paddocks belong to the grounds. Equipped with generous guest and pension boxes, jumping and dressage area, the riding hall and lunging arena, the riding stables at GUT VORBECK with the accompanying country hotel is the ideal place for a riding holiday.



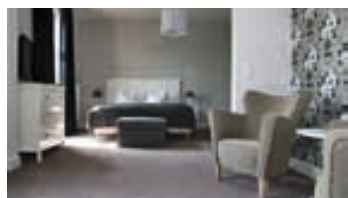
### Water Tours

Exciting water tours with a canoe  
on the Warnow River  
start directly from the Golf and  
Country Hotel GUT VORBECK.

The tours taking place is dependent  
on the water level of the Warnow River.  
The water level can be followed here:  
[www.warnow-pegel.de/pegel/warnow](http://www.warnow-pegel.de/pegel/warnow)

### GUT VORBECK Country and Golf Hotel

An der Warnow 1  
19065 Gneven/Vorbeck  
Tel/Fax: +49 3860 502996/-7  
info@gutvorbeck.de, www.gutvorbeck.de



**Q18** GUT VORBECK is just a few kilometres from Schwerin and directly on the Warnow River. Stylish ambience awaits you in the manor house with its Country and Golf Hotel. The generous manor property with cosy manor café, indoor playground for children, riding stables and canoe station is a direct neighbour of "Germany's Best Golf Course" (Golf Magazine) WINSTONGOLF. Water travellers can head downstream on their river adventure from here and for walkers and cyclists there are free GPS routes, as well as the possibility to hire bikes and e-bikes.

### WINSTONGOLF Kranichweg 1

19065 Gneven/Vorbeck  
Tel: +49 3860 5020  
Fax: +49 3860 502222  
info@winstongolf.de  
www.winstongolf.de

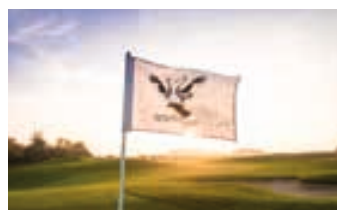
Ferienpark Retgendorf  
Kiefernweg 1, 19067 Dobin am See  
Tel: +49 3866 46030  
www.Ferienpark-Retgendorf.de



**P18** | 🇩🇪 | 🏇 | 🏏 | ♿ | 📶 | 📶 Would you have thought that Germany's best golf course is located at a region where more animals than people exist? Golfers come from around the world to WINSTONGOLF – and not only during the international tournaments which are held here. The multi award winning golf courses of the 45 hole golf areal including the championship course WINSTONGOLFopen and the inland link course WINSTONGOLFlinks – are at the top of the national ranking lists. Golf legends like Martin Kaymer and Bernhard Langer already played golf here. The practice areal with the par 3 course WINSTONGOLFkranich and the golf school offer excellent training opportunities for both beginners and experienced golfers. Holiday makers can do a training course over several hours or – with a bit of diligence – achieve the German green admission over five days.



**M16** | 🇩🇪 | 📶 | 📶 | 🍷 When you reach the east bank of Lake Schwerin you will be surprised at the Ferienpark Retgendorf. The ideal location on the south bank and the broad range of holiday and adventure activities make it an ideal destination in any season. You will find the restaurant "Waldsiedlung", a boat and bike hire, 2 skittle alleys, an 18 hole mini golf course and a riding stable. Another attraction is the wellness oasis "Wallenstein's Lager". With a Finnish sauna and an organic sauna, whirlpool, solarium, adventure shower, thermarium and Wallenstein's fireplace lounge with tea kitchen. This is a place where you can really relax and unwind.





**Campingplatz Seehof**  
Am Zeltplatz 1, 19069 Seehof  
Tel: +49 385 512540  
info@ferienpark-seehof.de  
www.ferienpark-seehof.de

**M14** Just 8 km from Schwerin there is a magnificent area for water activities and a place for your maritime camping holiday. Our creative centre and the candle factory will make the best days of the year an experience for the whole family.

see what a difference a day off from the daily run of the mill makes. A variety of adventure, sport, health, relaxation and gastronomy means that every guest enjoys an untroubled time full of fun and relaxation. An area of 12,000 m<sup>2</sup> with a total of 18 pools offers experience-filled hours – the adventure wave pool, a 25m sports pool, whirlpool and outdoor pool with current canal and bubble benches as well as a Thalassound massage pool, with a water area of about 1,500 m<sup>2</sup>, leaves nothing to be desired.



Directly next door to the WONNEMAR Swimming Complex, the new WONNEMAR Resort Hotel (www.wonnemar-resorts.de) invites you to relax. As soon as you reach the entrance you will feel right at home. Our friendly personnel ensure that our guests experience joy, fun, relaxation and recuperation. The unique combination of resort hotel with children's room, playground, youth room with video games and the WONNEMAR Swimming Complex right next door offers a relaxing time for the whole family ...

Opening times:  
May – September: Daily 10am – 9pm  
Wonnemar SPA: Daily 10.30am – 8pm  
October – April: Daily 10am – 10pm  
Wonnemar SPA: Daily 10.30am – 8pm  
Last entrance: 1.5 hrs before closing time  
550 free parking spots available, 350 of these under cover.



Let the delight begin. The WONNEMAR Swimming Complex – now new with the WONNEMAR Resort. In WONNEMAR fun is routine – then both young and old, big and small will

**Castle with Park Kaarz  
Season and Golf Hotel**  
Obere Dorfstraße 6  
19412 Weitendorf/Kaarz  
Tel/Fax: +49 38483 308-0/-40  
urlaub@schlosskaarz.de  
www.schlosskaarz.de

This classical castle hotel treasure houses 22 individual rooms, suites and apartments. Nature is not just present as a view from each window but was also the inspiration for the new design of the historical rooms. Wallpaper with opulent floral patterns or forest motifs, cuddle pillows printed with designs of deer and blackbirds,



rustic coat racks of solid wood: Naturalness and modern elegance are blended here in perfect combination. Kaarz Castle presents itself as an enchanting seasonal hotel. In case the sun doesn't shine, there are raincoats and gumboots available for a nice, long stroll. After active, adventurous excursions into nature, hot-water bottles, coffee makers, tea kettles and usually a bathtub, too, await you in your room.

**Seecamping Flessenow**  
Am Schweriner See 1 a  
19067 Dobin am See/Flessenow  
Tel: +49 3866 81491  
info@seecamping.de  
www.seecamping.de



**L16** Camping directly at Lake Schwerin: Our Campingsite "Seecamping" is at the edge of the small village of Flessenow. The peaceful camping area is the perfect holiday spot for nature-lovers and families. Service and facilities: • Reception house with free Wi-Fi • cycling maps, fishing licenses, excursion tips • bike hire • shop (fresh bread rolls daily) • bistro (coffee, cake, snacks, terrace with lake view) • swimming area, playgrounds • canoe and boat hire



*On your marks,  
loose the rope!*

*Are you a water rat or a hobby captain? Our water tour brochure with valuable tips about boat hire and a pull-out map for water tourists gives an overview of the numerous bodies of water in the Schwerin Lakes District.*

**Available for free at the  
TOURIST-INFORMATION!**



alpincenter  
Hamburg-Wittenburg  
Zur Winterwelt 1, 19243 Wittenburg  
Tel/Fax: +49 38852 234-0/-191  
infocenter@alpincenter.com  
www.alpincenter.com/  
hamburgwittenburg  
www.wittenburg.vandervalk.de

alpincenter Wittenburg: More than just snow! Snow fun the whole year at 30,000 m<sup>2</sup> and many other "cool" activities at Europe's largest indoor snow park, directly on the A24 and just 20 minutes' drive from Schwerin. The skislope is 330m long and up to 120 m wide with an incline of 10% to 31% makes not only winter sports fans hearts beat faster. From various lift tickets to ALL INCLUSIVE offers, there is something for everyone of every generation. Restaurants and bars, a cosy bowling lounge, children's adventure world with a large indoor and outdoor playground as well as, in the warmer months, a 1.1km long go-cart track and a water ski and wakeboard area only 10 minutes' drive away in Zachun offers everything the heart desires. The conference rooms and event areas offer a capacity of up to 1,000 people. Guests can stay overnight in the neighbouring Van der Valk Hotel.

Water Ski Lift Zachun  
Am Badesee 1, 19230 Neu Zachun  
Tel/Fax: +49 38859 60-10/-12  
info@wasserskilift.de  
www.wasserskilift.de



Water Ski Lift Zachun:  
More than just wet!

Just 15 minutes' drive from Schwerin, the water ski lift in Zachun is the perfect mix of action, relaxation and fun on the idyllic Lake Kies. The 800 m long water ski and wakeboard areal in Neu Zachun offers various challenges for all skill levels. Beginner courses where you can learn how to water ski and wakeboard very quickly are offered for water ski novices. The only condition is that participants can swim. The swimming spot with sunbathing meadow and the cosy restaurant with the summer terrace radiates holiday flair. Next to the camping area there is also a barbecue area, a beach volleyball court and fishing facilities that guests can use. Cool events, beach parties and children's festivals take place regularly at the Water Ski Lift Zachun and create a great atmosphere.



## Direction and instruction: Cycling and walking maps

*Explore the cycling and walking network around Schwerin, missing no sights, with the help of our detailed map material.*

1. "Radwander- und Wanderkarte Schwerin und Umgebung" – bike tour suggestions with distances and many tips about the sights; price: 6.50 €
2. "Rad- und Wanderkarte Schwerin-Wismar" – the island of Poel with destinations, stops and activity tips; price: 4.95 €
3. "Rund um den Schweriner See" – Cycling and Walking Map – Klemmer Publishers; price: 3.90 €
4. "ADFC-Regionalkarte Radtouren – Schwerin Ostseeküste"; Schwerin Baltic Sea coast; all bike tours for week-long tours and day trips, with street names for better orientation; price 6.80 €
5. "Wanderkarte mit Wanderführer Schweriner Seenlandschaft" – current walking trail network; price: 5.50 €
6. "Radwanderkarte Eldeland" – Lewitz – Ludwigslust – Parchim – Lübz – Plau am See with destinations, stops and activity tips; price: 4.95 €
7. "Rad-, Wander- & Gewässerkarte Schweriner See"; with descriptions for cycling and walking and waterways map; price: 5.50 €
8. "Schwerin Rad-Wander-Karte"; comprehensive description of the Schwerin Lakes Cycling Tour for the inner and outer lakes; price: 2.50 €



All maps and other comprehensive map material are available at the TOURIST-INFORMATION in Schwerin and at Tourism Association Schwerin Lakes District in Hohen Viecheln.



### Best Western Seehotel Frankenhorst

Frankenhorst 5, 19055 Schwerin  
Tel/Fax: +49 385 59222-0/-145  
info@seehotel.bestwestern.de

www.seehotelfrankenhorst-schwerin.de

**K15** Relaxation for body and soul can be found in our wellness and beauty area "Lago SPA". Whether you observe the beautiful surface of the lake with its boats and bathing jetty while enjoying our pool or relaxing in our light-flooded chill-out room or just take a swim in the lake after having visited the sauna – the closeness to the lake is an especially appealing accent for every activity.

### Spa and Wellness Area Schloss Basthorst


Schlossstraße 18, 19089 Crivitz  
Tel: +49 3863 525203



**Q19** Spread over 1,300 m<sup>2</sup> numerous wellness activities await you: A visit to the pool or sauna landscape, cosmetic treatments, massages, bath and body treatments – this is the place to forget the worries of the day and to immerse into the world of senses!

**belasso**  
Fitness • Ball + Sport • Sauna • Wellness •  
Bowling • Prevention  
Ellerried 74, 19061 Schwerin  
Tel: +49 385 48 50 00  
info@belasso.de, www.belasso.de



 Mecklenburg's largest recreation facility "belasso" offers many possibilities for active recuperation and relaxation: Holistic training in the health and fitness studio with alpine heights training room, ball sport area with tennis, squash, badminton and indoor soccer, climbing wall, bowling alley "bowlers", wellness time in the sauna world with pool, garden and wellness area, gastronomy and events. "belasso" – N° 1 in Schwerin for sport, wellness and health!

### Biohotel Amadeus Raimund Brandner

Franz-Mehring-Str. 26, 19053 Schwerin  
Tel: +49 385 512084

www.fasten.bio, info@fasten.bio



Experience a fasting week with an art & culture programme in Germany's most beautiful state capital. Relax with delightful Nordic Walking tours and Kneipp treatments in and at the Schwerin lakes. Combine relaxation for the body with nourishment for the soul. Dates and prices at www.fasten.bio



## Our service for you

*In our TOURIST-INFORMATION office we constantly strive to make your stay as pleasant as possible. Use our comprehensive service for finding accommodation, ticket sales or complete travel bookings.*

*We look forward to helping you!*



**TOURIST-INFORMATION**  
im Rathaus Am Markt 14  
19055 Schwerin  
Tel: +49 385 5925212  
Fax: +49 385 555094

info@schwerin.info  
www.schwerin.com

Opening times:  
Mon – Fri 9 am – 6 pm  
Sat/Sun/public holidays  
10 am – 4 pm

Accommodation bookings:  
Anja Muggenburg

Tel: +49 385 5925212  
Fax: +49 385 5925263  
zimmer@schwerin.info

Short trips: Dana Michaelis

Tel: +49 385 5925271  
Fax: +49 385 5925273  
kurzreisen@schwerin.info

Group travel: Cornelia Liebenow

Tel: +49 385 5925222  
Fax: +49 385 562739  
gruppen@schwerin.info



### Vouchers Schwerin as a gift.

*Surprise someone with an event voucher or trip to Schwerin: With our gift vouchers you can choose a package, put together a trip or stipulate a certain sum for a gift voucher for the lucky recipient.*



### Opening times for cultural and recreational facilities in Schwerin

#### Schwerin Palace

Lennéstraße 1, 19053 Schwerin  
Tel: +49 385 5252920  
Fax: +49 385 563091  
info@schloss-schwerin.de  
www.museum-schwerin.de

Tour of preferred elite floors of the house  
Gallery: Paintings in Mecklenburg  
15.04. – 14.10. Tue – Sun 10am – 6pm  
15.10. – 14.04. Tue – Sun 10am – 5pm  
Group tours by registration

#### Public tours:

15.04. – 14.10. Tue – Sun 11am, 1:30pm  
01.05. – 30.06. Sat + Sun 3pm  
15.10. – 14.04. Tue – Fri 11:30am  
Sat + Sun 11:30am and 1:30pm

#### Staatliches Museum Schwerin/ Ludwigslust/Güstrow

Alter Garten 3, 19055 Schwerin  
Tel: +49 385 59580  
Fax: +49 385 563090  
info@museum-schwerin.de  
www.museum-schwerin.de

Viewing: Dutch paintings,  
modern art, copper etching  
15.04. – 14.10. Tue – Sun 10am – 6pm  
15.10. – 14.04. Tue – Sun 10am – 5pm  
Every Thursday events series  
Rendezvous (except July + August)  
6pm – 8pm

#### Schleswig-Holstein-Haus Kulturforum der Landeshauptstadt Schwerin

Puschkinstraße 12, 19055 Schwerin  
Tel: +49 385 555527  
Fax: +49 385 20238040  
schleswig-holstein-haus@schwerin.de  
www.schwerin.de/sh-haus

Exhibition and event centre  
Tuesday – Sunday 11am – 6pm

#### Stone Grinding Mill

Schleifmühlenweg 1, 19061 Schwerin  
Tel: +49 385 562751  
Fax: +49 385 5572214  
schleifmuehle-schwerin@arcor.de  
www.schleifmuehle-schwerin.de

Changing and permanent exhibitions  
from April to November  
daily 10am – 5pm  
Out of season by reservation only.



#### Open Air Museum for Folklore Schwerin-Mueß

Alte Crivitzer Landstraße 13  
19063 Schwerin  
Tel: +49 385 208410  
Fax: +49 385 2084129  
www.schwerin.de/freilichtmuseum

2017: 26.03. – 31.10.  
2018: 30.03. – 31.10.  
Tue – Sun/public holidays 10am – 6pm  
Museum café  
Tue – Sun/public holidays 11am – 5pm  
01.10. – 31.10.  
Tue – Sun/public holidays 10am – 5pm  
Museum café  
Tue – Sun/public holidays 11am – 4:30pm

#### Cathedral

Am Dom 4, 19055 Schwerin  
Tel: +49 385 565014  
schwerin-dom@elkm.de  
Further information and opening times  
at www.dom-schwerin.de

Public tours: Tue + Sun 11am

#### Zoological Garden

An der Crivitzer Chaussee 1  
19061 Schwerin  
Tel: +49 385 395510  
Fax: +49 385 3955130  
www.zoo-schwerin.de

01.02. – 31.03. daily 10am – 5pm  
01.04. – 14.10. daily 9am – 6pm  
(on weekends till 7pm)  
15.10. – 31.10. daily 9am – 15pm  
(on weekends till 6pm)  
01.11. – 31.01. daily 10am – 4pm



#### Volkshochschule Schwerin Sternwarte/Planetarium

Weinbergstraße 17, 19061 Schwerin  
Tel: +49 385 512844, +49 385 5912721  
Planetarium-sn@versanet.de  
www.vhs-schwerin.de

Public demonstrations:  
Whole year – Sunday, Wednesday 2:30pm  
October – March: Friday 7pm  
April – September 8pm  
Additionally in school holidays:  
Tuesday, Thursday 11am



### Football golf Schwerin e. V.

Bahnhofstraße 2, 19057 Schwerin  
Tel: +49 385 6173610, +49 174 7984975  
www.fussballgolf-schwerin.de  
Tuesday-Friday from 2pm; Monday closed  
Saturday, Sunday, public holidays from 11am  
Last kick off daily at 5:30pm  
A round takes about 90 minutes

### International Fire Brigade Museum

Hamburger Allee 68  
19063 Schwerin  
Tel: +49 385 20271539  
www.ifm-schwerin.com

April – October Tue – Sun 10am – 6pm  
November – March closed  
Tours during this time are possible by  
appointment

### Miniature Park "Lütt Schwerin"

Ratzeburger Straße 48  
19057 Schwerin  
Tel: +49 385 4807822  
www.luettt-schwerin.de  
May – October Mon – Sun 10am – 5pm

### Pinball Museum Schwerin e. V.

Friesenstraße 29  
19053 Schwerin  
www.flippermuseum-schwerin.de  
Saturday and Sunday 2pm – 6pm  
And for groups by appointment

## Pictogram key

- |  |   |
|--|---|
| Can be reached by public transport     | Blind and sight impaired                  |
| Family friendly                        | Wi-Fi                                     |
| Conditionally wheelchair accessible    | <b>F6</b> Coordinates for maps p. 77 – 78 |
| Wheelchair accessible                  | Vegan                                     |
| Bad weather variation                  | Vegetarian                                |
| Conditionally wheelchair accessible WC | Lactose free                              |
| Handicapped WC                         | Gluten free                               |
| Hearing impaired                       |   |

## Mobile home sites

### E7 Old Town Parking Area

Corner of Grüne Straße and  
Werderstraße, 19055 Schwerin  
(opposite the royal stables)  
Tel: +49 385 39900

### B4 Parking area at the train station

Wismarsche Straße, 19055 Schwerin  
Tel: +49 385 39900

### P13 P+R next to the Sport and Congress Hall

Wittenburger Straße, 19059 Schwerin

### Parking area

Jägerweg/Schlossgarten  
Bertha-Klingberg-Platz, 19053 Schwerin  
Tel: +49 385 39900

### R15 AWO Holiday Village Mueß

Alte Crivitzer Landstraße 6  
19063 Schwerin  
Tel: +49 385 208460  
info@feriendorf-muess.de  
www.feriendorf-muess.de

### Q13 Recreation Facility Kaspelwerder

Am Erlenbruch  
19061 Schwerin/Görries  
Tel: +49 173 8305016

### Q14 Marina Nord am Heidensee

Buchenweg 19, 19055 Schwerin  
Tel: +49 385 512654

### P14 Sports Boat Centre Schwerin

Güstrower Straße 88, 19055 Schwerin  
Tel: +49 385 171452  
Mobile: +49 172 3818685  
info@sportbootzentrum.de



## Police/Emergencies

**Emergency with danger to life:**  
Rescue services and fire brigade: 112  
Police: 110

**E5 Police station Schwerin Centre:**  
Schloßstraße 10, 19053 Schwerin  
Tel: +49 385 539321

**Chemist emergency service:**  
In the local pages of the Schweriner  
Volkszeitung  
www.apotheken.de or  
Tel: +49 800 0022833 (free call)  
(from mobile without area code:  
22833)

**Ambulance Schwerin:**  
Graf-York-Straße 21, 19061 Schwerin  
Tel: +49 385 50000 (Rescue centre)

**Paediatrician emergency service:**  
Tel: +49 180 5868222601  
Clinic hours for children's and youth's  
medicine  
Helios-Kliniken  
Wismarsche Straße 393 – 397  
19055 Schwerin

Mon, Tue, Thurs 7pm – 8pm  
Wed, Fri 6pm – 8pm  
Sat, Sun, public holidays 8 – 8pm

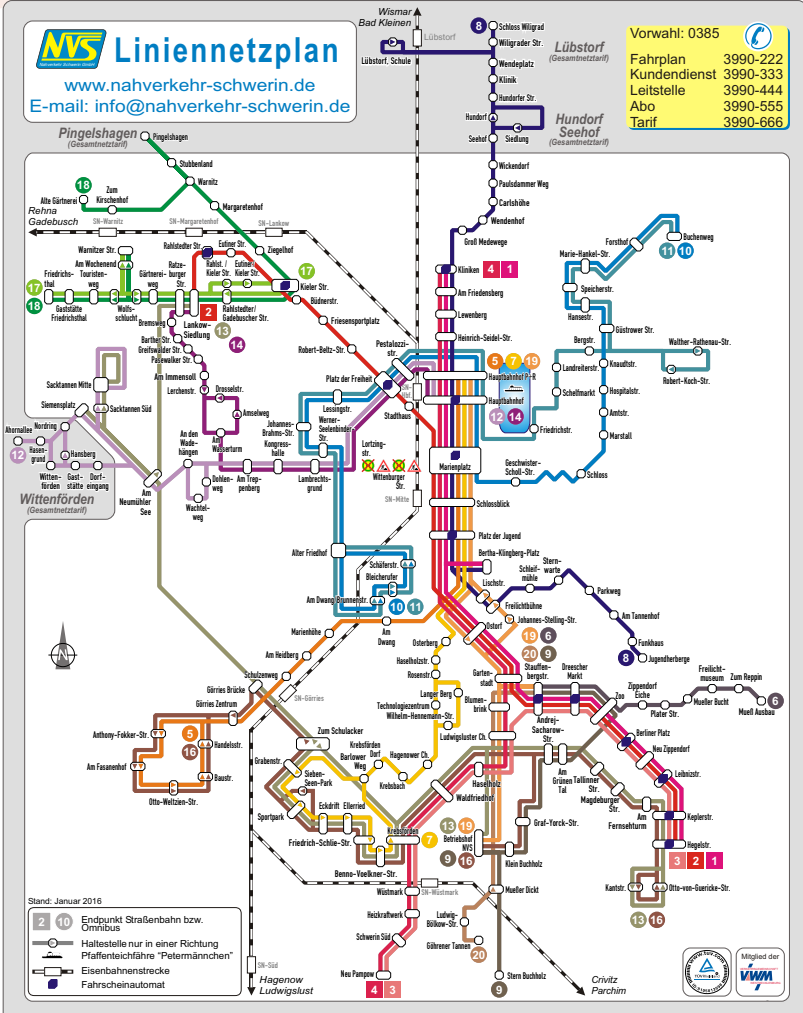


# Linienetzplan

www.nahverkehr-schwerin.de  
E-mail: info@nahverkehr-schwerin.de

Vorwahl: 0385

|              |          |
|--------------|----------|
| Fahrplan     | 3990-222 |
| Kundendienst | 3990-333 |
| Leitstelle   | 3990-444 |
| Abo          | 3990-555 |
| Tarif        | 3990-666 |



## Bezahlen? Ganz einfach!

**Wo?** In allen Straßenbahnen und Omnibussen stehen Automaten zur Verfügung.

**Wie?** Mit einer Banknote und/oder Münzen ab 5 Eurocent, der EC-Karte ab 8,50 Euro und PIN-Eingabe oder der Geldkarte (aufladener Geldkarten-Chip).

- Timetable enquiries – Tel: +49 385 3990-222
- Customer service – Tel: +49 385 3990-333
- Parking service – Tel: +49 385 3990-446
- Subscription service – Tel: +49 385 3990-555
- Fare enquiries – Tel: +49 385 3990-666









## TOURIST-INFORMATION

Am Markt 14/Rathaus  
19055 Schwerin  
Tel: +49 385 5925212  
Fax: +49 385 555094  
info@schwerin.info  
www.schwerin.info

Opening times:  
Mon – Fri 9am – 6pm  
Sat/Sun/public holidays 10am – 4pm



Issuer: Stadtmarketing Gesellschaft Schwerin mbH

Title photo: Christian Möller – photography moe4.de, Photos: Foto@Andreas Duerst/STUDIO 301, Mecklenburg State Theatre, Archive City Marketing Association Schwerin mbH, Tourism Association Mecklenburg-Schwerin, Tourism Association Mecklenburg-Vorpommern, National Garden Show GmbH, Reinhard Balzerek, www.pixelquelle.de, www.fotolia.de, www.sobjektiv.de – Marieke Sobiech, www.fachwerkler-grafik.de – Luise Kolpin, F. Leisten, J. Kreuzschmer, www.pixelio.de, S. Winkler, E. Hellmich, C. Böttcher, S. Köberlein, State Museum Schwerin, Timo Roth, Markus Tollhopf, J. Lehmann, Maps: Land Registry Office State Capital of Schwerin, Engineer Office for Cartography Peter Kast, fachwerkler – Konzeption und Grafikdesign GbR, www.fachwerkler-grafik.de, Texts: Stefanie Burr, www.lebendigekommunikation.com; Marieke Sobiech, www.sobjektiv.de; Ulrike Pech, www.kommunikation-up.de; City Marketing Association Schwerin mbH, Design: fachwerkler – Konzeption und Grafikdesign GbR, www.fachwerkler-grafik.de, Pictograms: fachwerkler – Konzeption und Grafikdesign GbR, Production: Druckerei WEIDNER GmbH, Rostock, As of: April 2017. This product is protected by copyright. Reprinting, also in part, is not permitted.



**SCHLOSSFESTSPIELE SCHWERIN**  
of the Mecklenburg State Theatre  
June–August // Alter Garten, Castle Courtyard

# Great Classics



For many years, the internationally acclaimed open-air festival SCHLOSSFESTSPIELE SCHWERIN has been the cultural highlight of the touristic season in the capital of Mecklenburg-Vorpommern.

In the heart of the historic city centre and with a view of the lakeland, audiences experience the best of opera, classic musical and drama in the unique scenery of the Schwerin Castle.

**TICKETS:** + 49 385 53 00-123 // [www.mecklenburgisches-staatstheater.de](http://www.mecklenburgisches-staatstheater.de)

MECK  
LEN  
BURG  
ISCHES  
STAATS  
THEA  
TER